



APPROVED

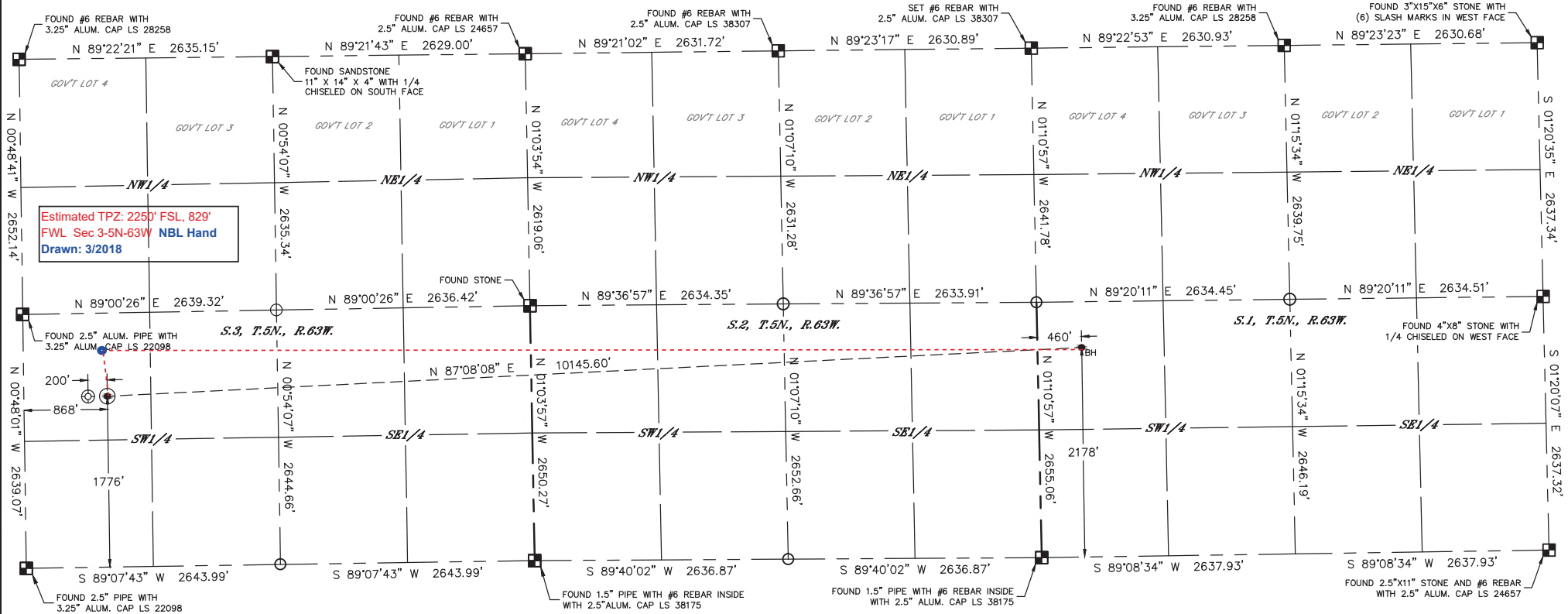
By Jacob Eicher at 6:58 am, Mar 29, 2018

Lat40°, Inc. 6250 W. 10th Street, Unit 2, Greeley, CO 970-515-5294

WELL LOCATION CERTIFICATE

WELLS RANCH STATE BB03-643

SECTION: 3
TOWNSHIP: 5N
RANGE: 63W
6TH. P.M.
WELD COUNTY, CO



CLIENT: NOBLE ENERGY, INC.				LANDMAN: GREG WILSON			
INSTRUMENT OPERATOR: JAKE STILLE				SURVEY DATE: 11/8/2017			
SHL FOOTAGE	SHL LAT °	SHL LONG °	SHL PDOP	SHL ELEV (FT.)	SHL 1/4/1/4	SHL S-T-R	
1776 FSL 868 FWL	40.42602	-104.42942	2.3	4724	NWSW	3-5-63	

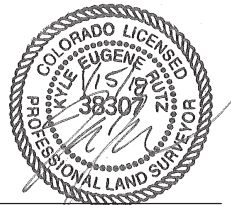
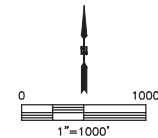
BHL FOOTAGE	BHL LAT °	BHL LONG °	BHL S-T-R
2178 FSL 460 FWL	40.42707	-104.39301	1-5-63

NOTE:

- 1) Bearings shown are Grid Bearings of the Colorado State Plane Coordinate System, North Zone, North American Datum 1983. The lineal dimensions as contained herein are based upon the "U.S. Survey Foot."
- 2) Distances to section lines measured at 90 degrees from said section lines.
- 3) Ground elevations are based on an observed GPS elevation (NAVD 1988 DATUM).
- 4) Latitude and Longitude shown are (NAD 83 DATUM).
- 5) IMPROVEMENTS: See LOCATION DRAWING for all visible improvements within 500' of oil and gas location.
- 6) This map does not represent a boundary survey.

LEGEND

- = ALIQUOT MONUMENT AS DESCRIBED
- = CALCULATED POSITION
- = SURFACE HOLE LOCATION (SHL)
- ▲ = ENTRY POINT LOCATION (EP)
- BH = BOTTOM HOLE LOCATION (BHL)
- ⊙ = EXISTING WELL
- ⊙ = ABANDONED WELL



Kyle E. Rutz—On behalf of Lat40°, Inc.
Colorado Licensed Professional DATE: 1/15/2018
Land Surveyor No. 38307 PROJECT#: 2017093