

OPERATOR: **Extraction Oil & Gas**

WELL NAME: **Merlin 29E-10-6N**

FIELD NAME: DJ Basin - Wattenberg

DRILLING RIG: Patterson 901

API #: 05-123-47469

LAT/LONG: 40.458348, -104.925253

SURFACE HOLE: SWNW S29-T6S-R67W, 2431' FNL, 341' FWL

BOTTOM HOLE: S29-T6S-R67W, 1530' FSL, 0' FEL

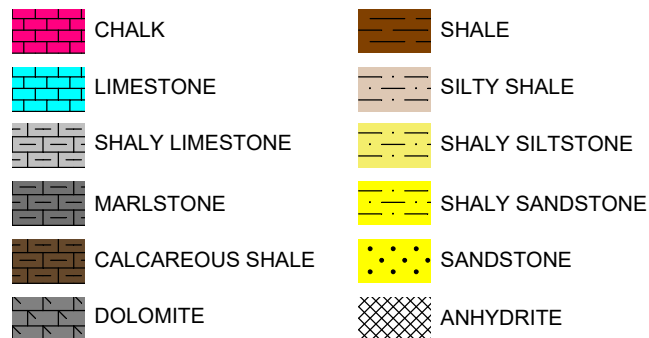


Earth Science Agency, LLC

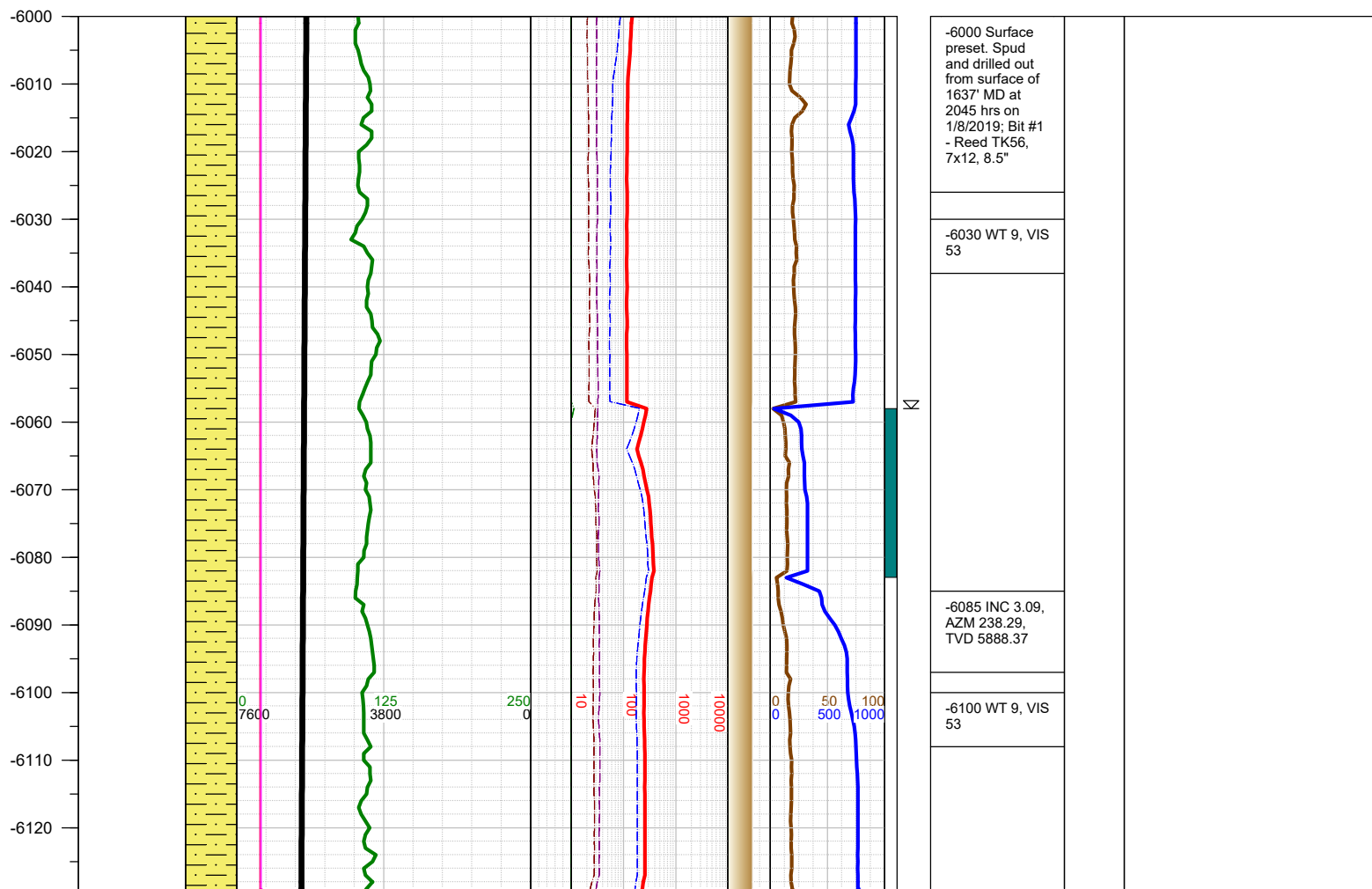
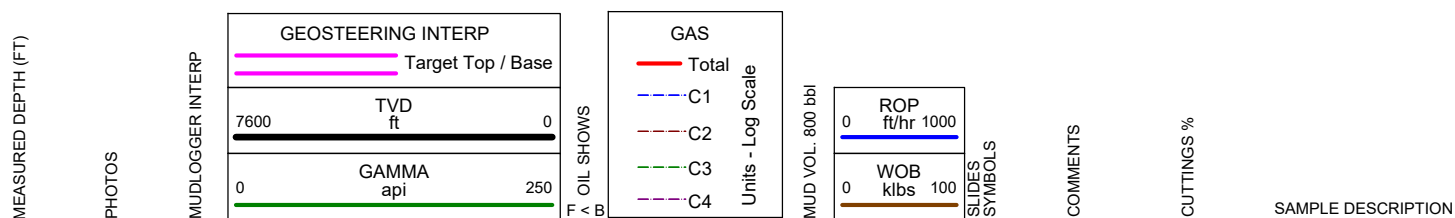
COUNTY: Adams
STATE: Colorado
GROUND ELEVATION: 4811'
KELLY BUSHING: 4840'
DRILLING FLUID: OBM
TVD VS. MD: 7001' / 12080'
SPUD DATE: January 8, 2019
TD DATE: January 10, 2019

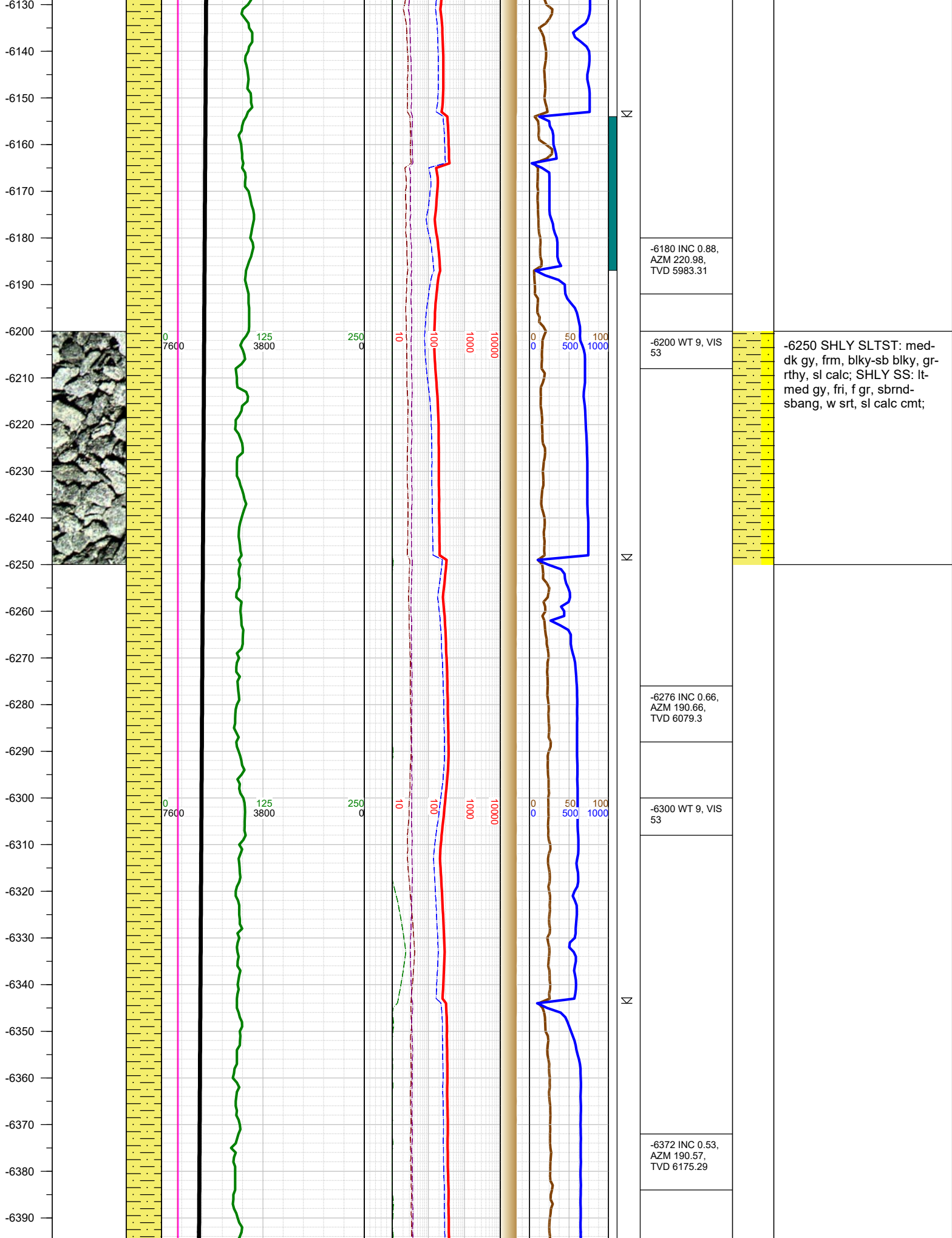
DEPTHS LOGGED: 6000' - 12080'
DATES LOGGED: January 9, 2019 - January 10, 2019
GEOLOGISTS: Dan Jacobs, Blake Eatherton
SCALE: 5" = 100'

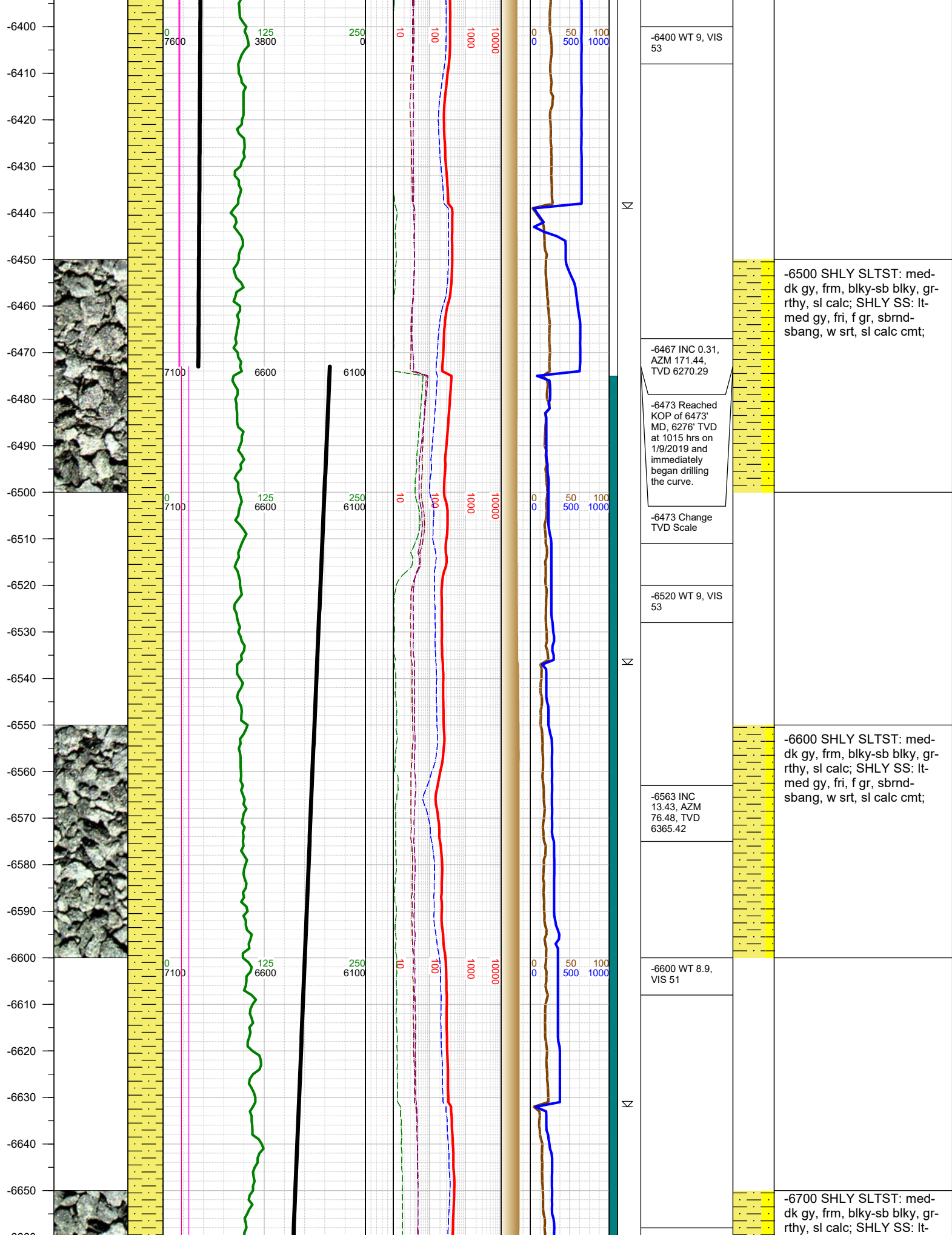
LEGEND

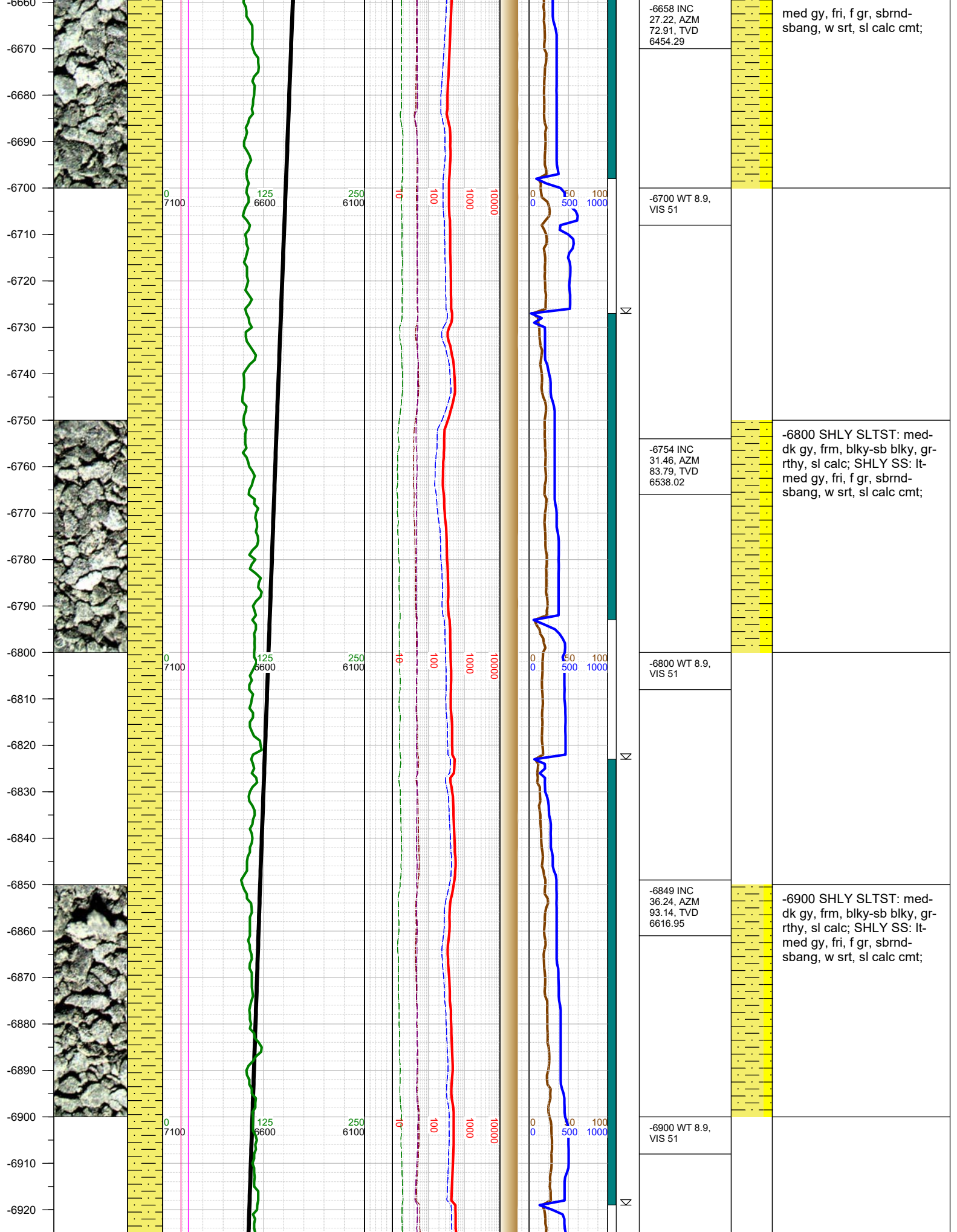


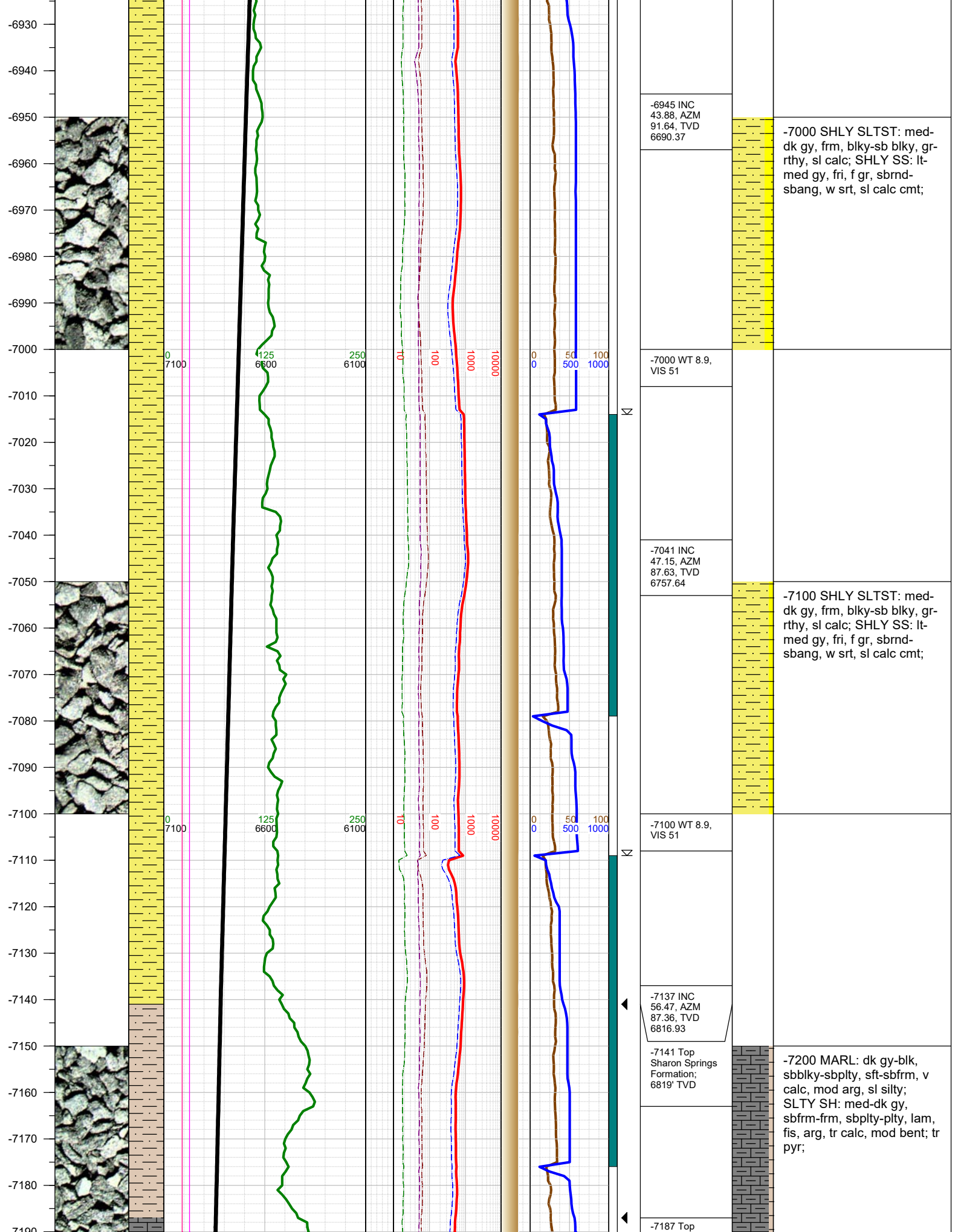
FORMATION CONNECTION MIDNIGHT NEW BIT GAS SHOW FAULT

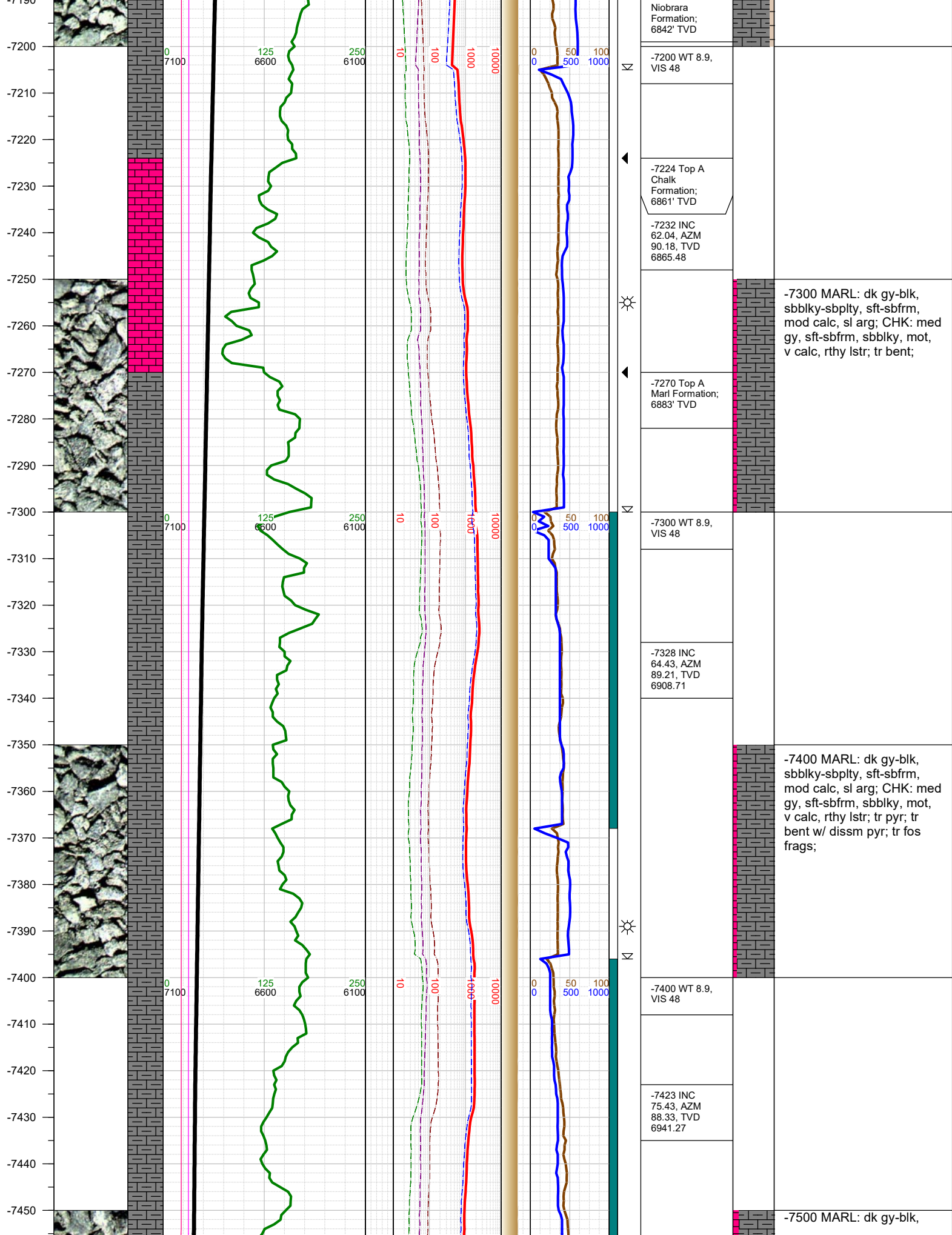


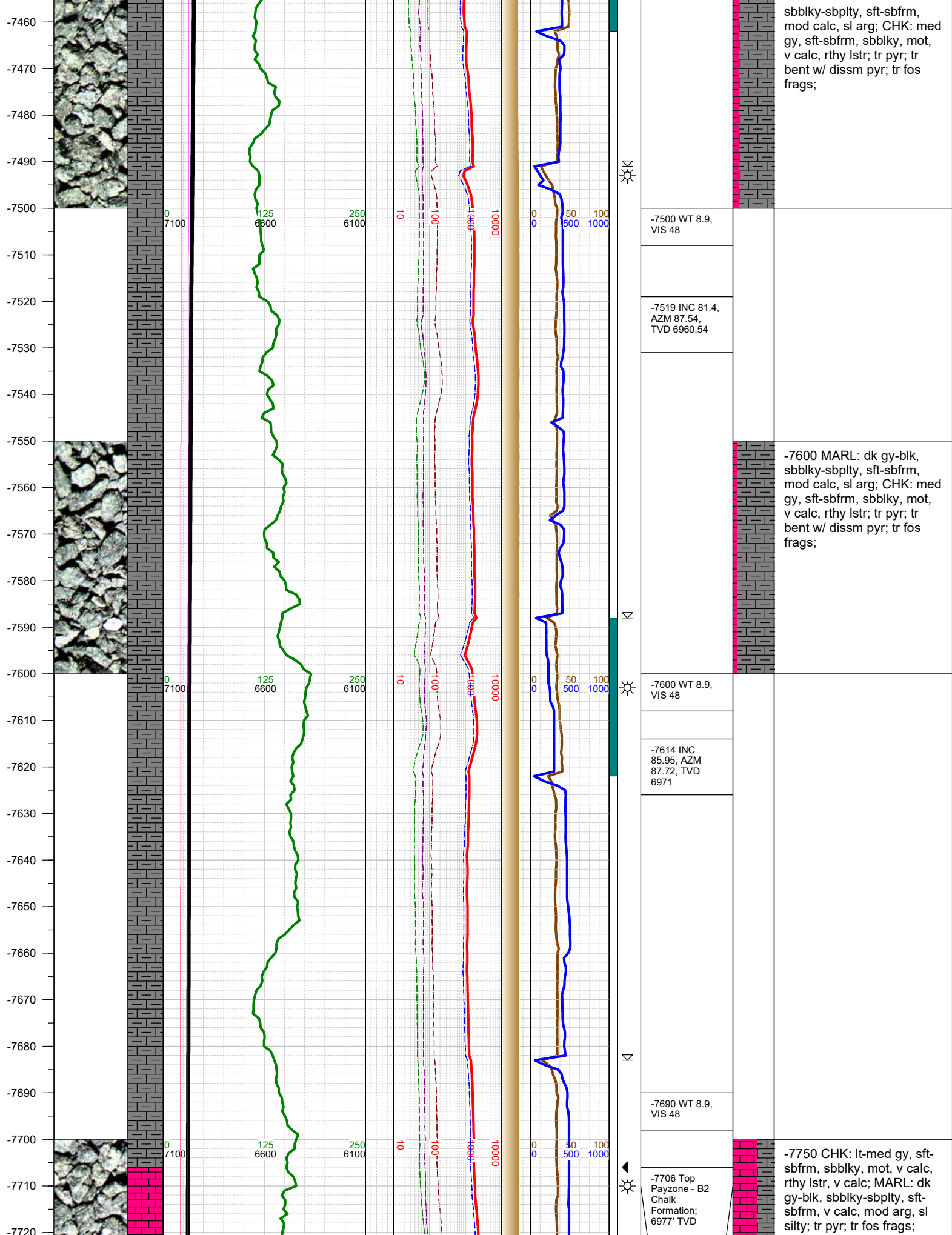


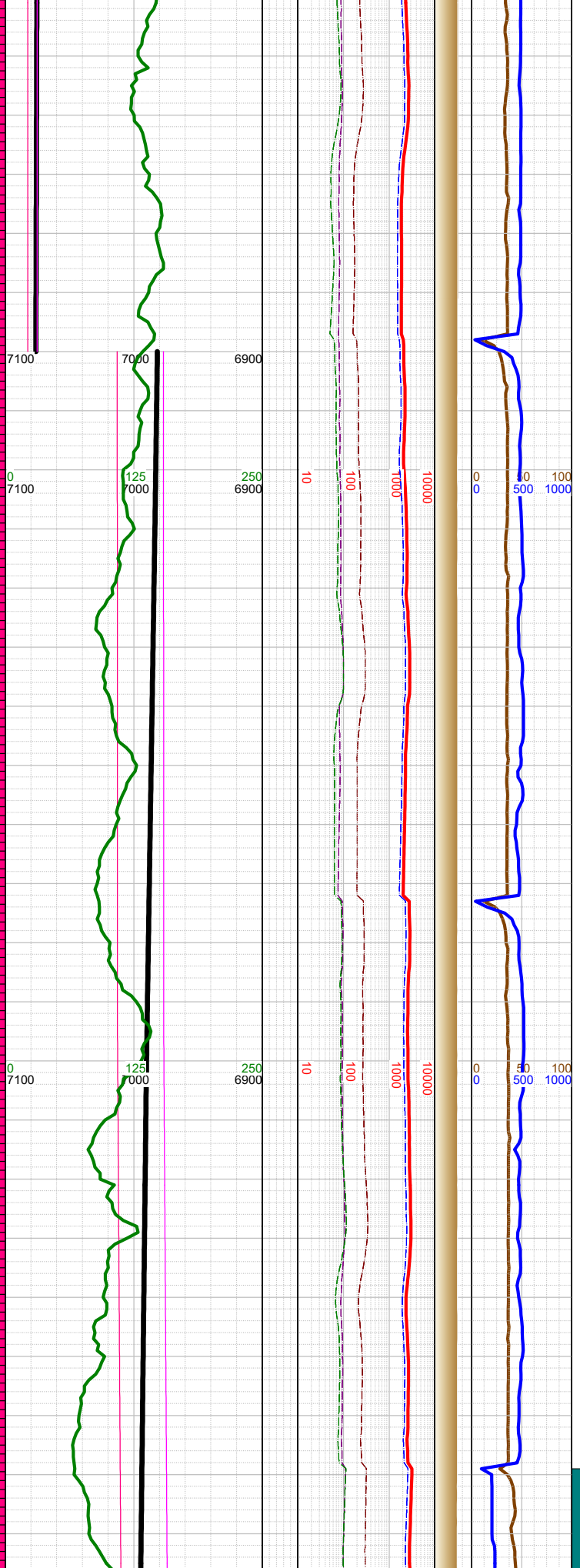
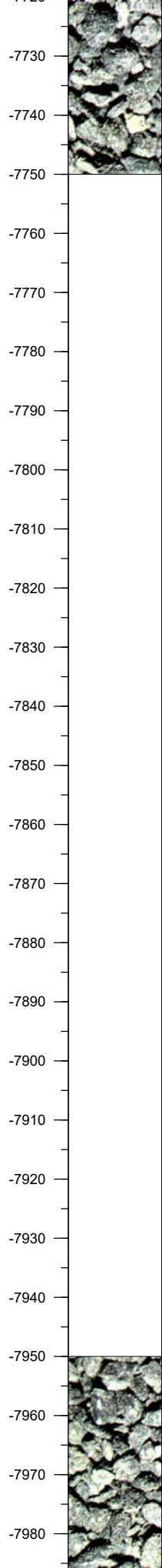












-7710 INC
86.52, AZM
88.82, TVD
6977.3

-7780 Reached
LP of 7780' MD,
6982' TVD at
1501 hrs on
1/9/2019 and
immediately
began drilling
the lateral.

-7780 Change
TVD Scale

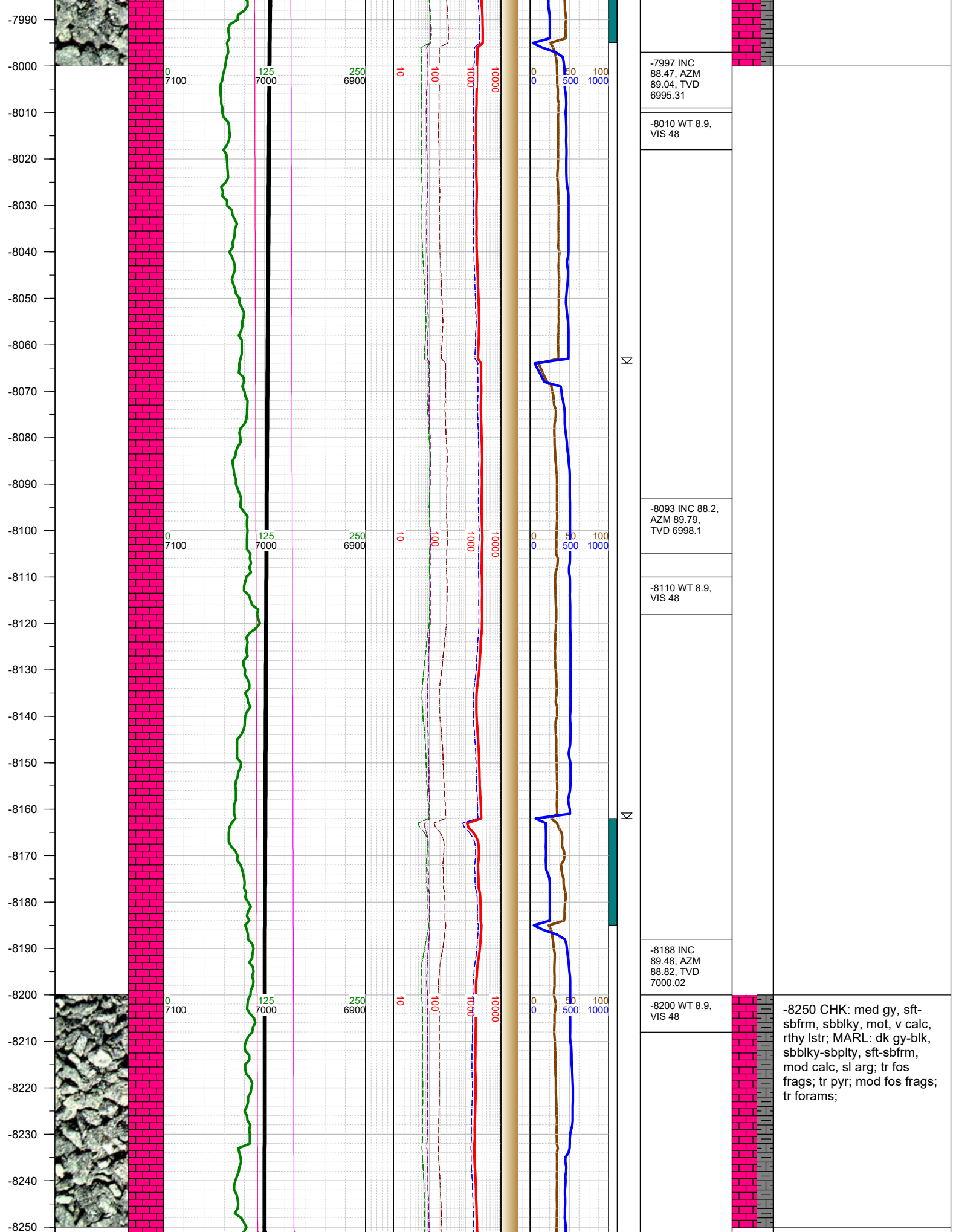
-7806 INC
86.13, AZM
88.77, TVD
6983.46

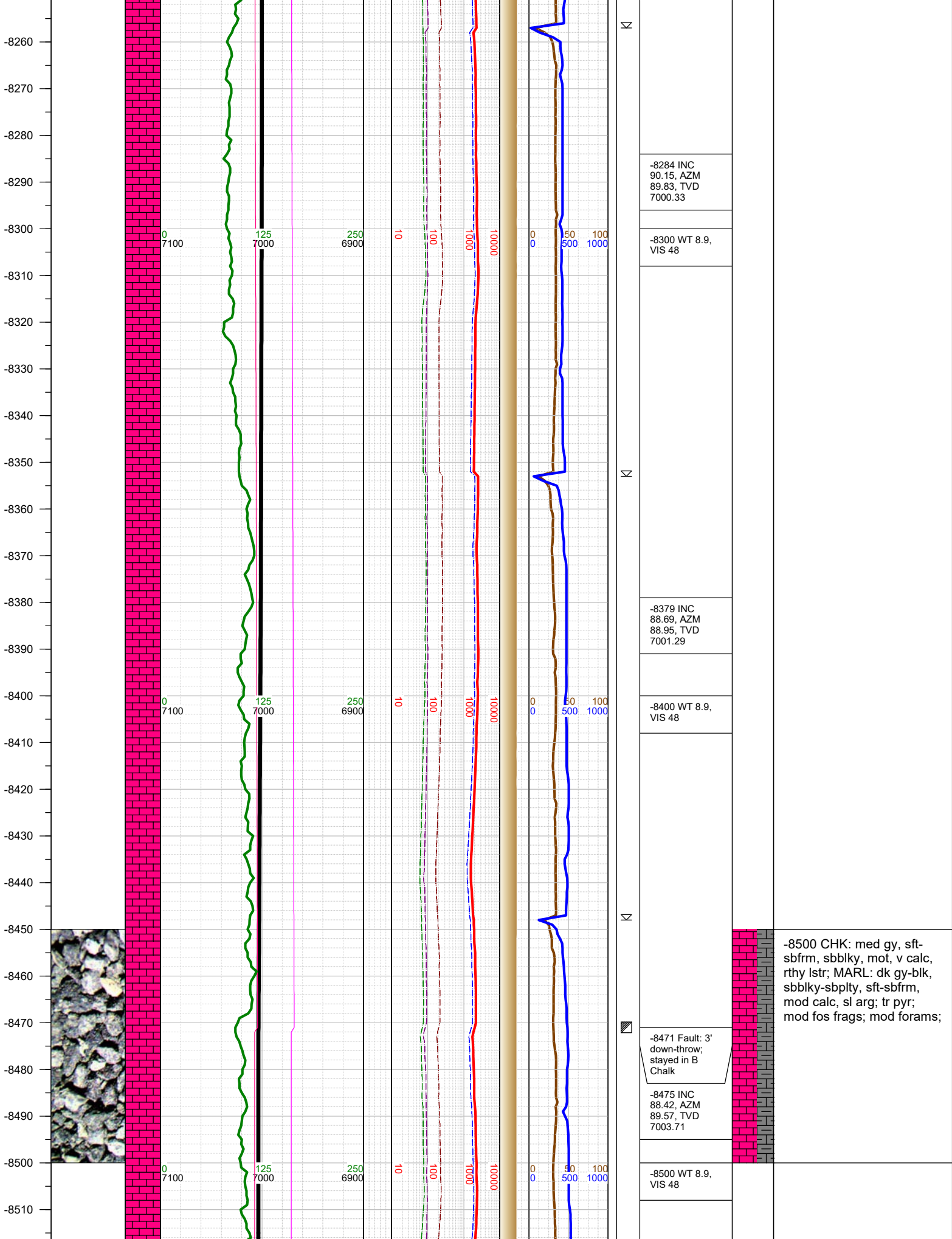
-7830 WT 8.9,
VIS 48

-7902 INC
85.59, AZM
88.86, TVD
6990.39

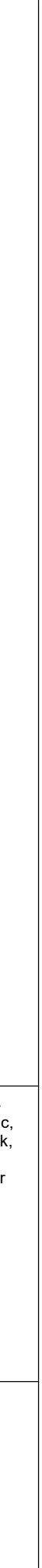
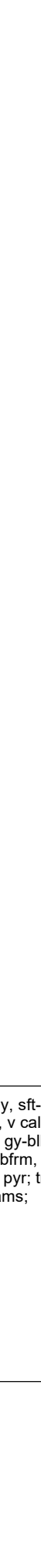
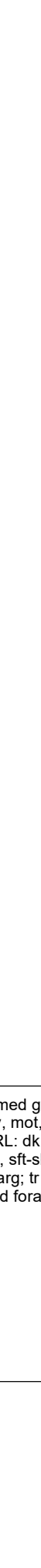
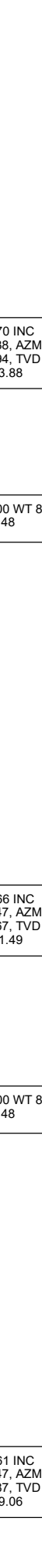
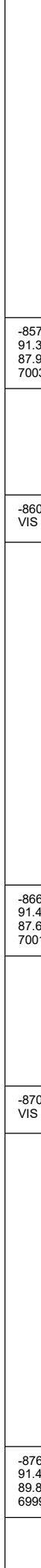
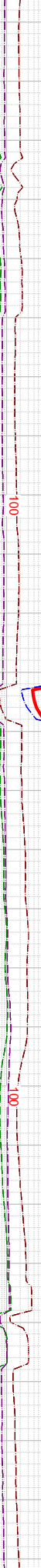
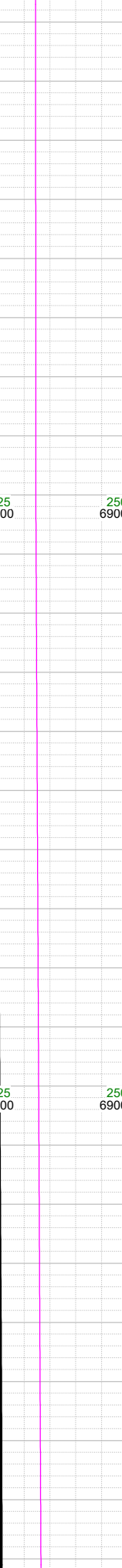
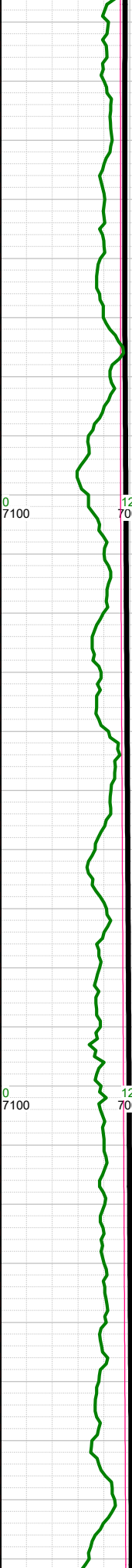
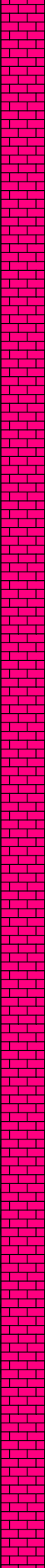
-7920 WT 8.9,
VIS 48

-8000 CHK: med gy, sft-
sbfrm, sbblky, mot, v calc,
rthy lstr; MARL: dk gy-blk,
sbblky-sbplty, sft-sbfrm,
mod calc, sl arg; tr fos
frags; tr pyr; mod fos frags;
tr forams;





-8520
-8530
-8540
-8550
-8560
-8570
-8580
-8590
-8600
-8610
-8620
-8630
-8640
-8650
-8660
-8670
-8680
-8690
-8700
-8710
-8720
-8730
-8740
-8750
-8760
-8770
-8780



-8570 INC
91.38, AZM
87.94, TVD
7003.88

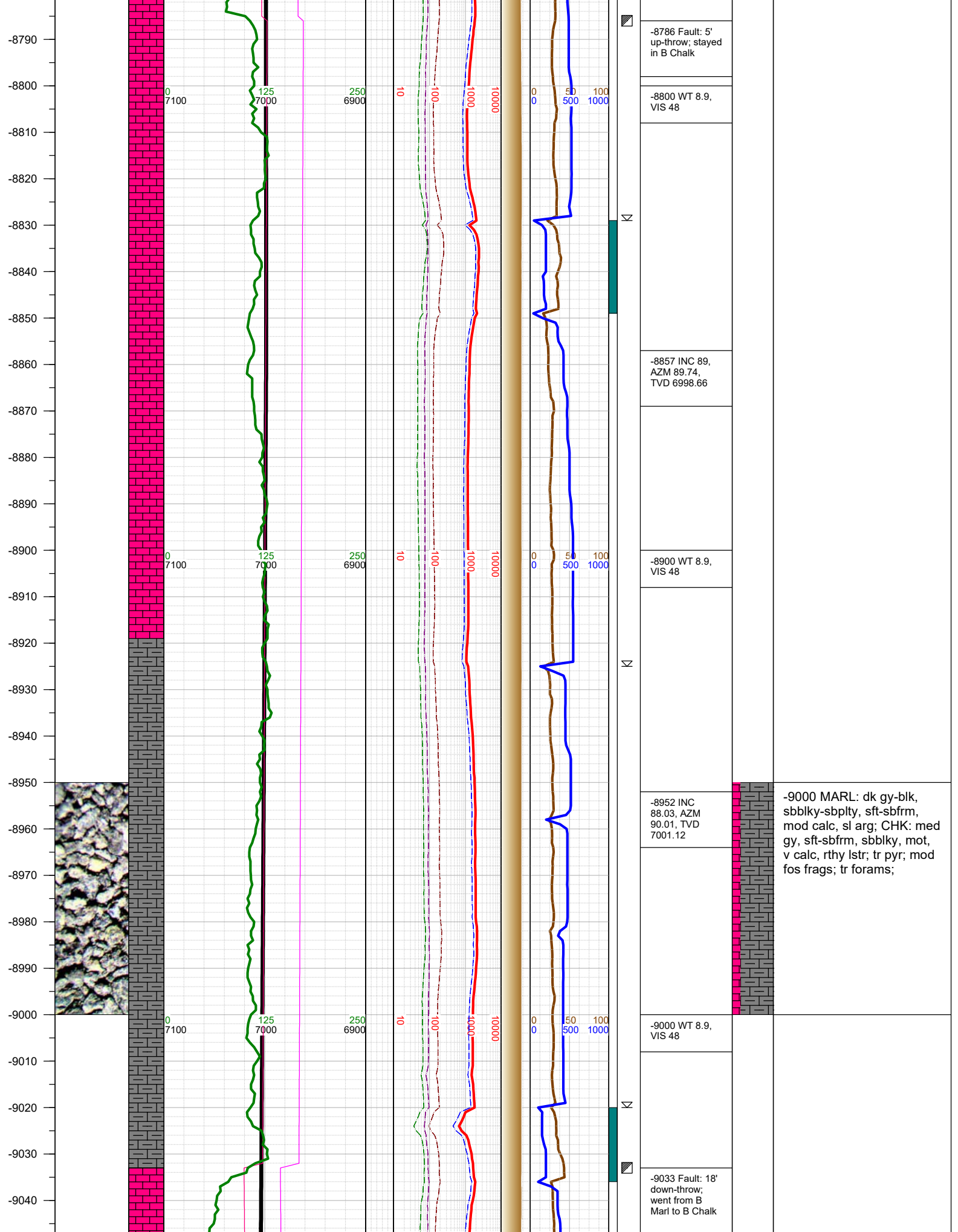
-8600 WT 8.9,
VIS 48

-8666 INC
91.47, AZM
87.67, TVD
7001.49

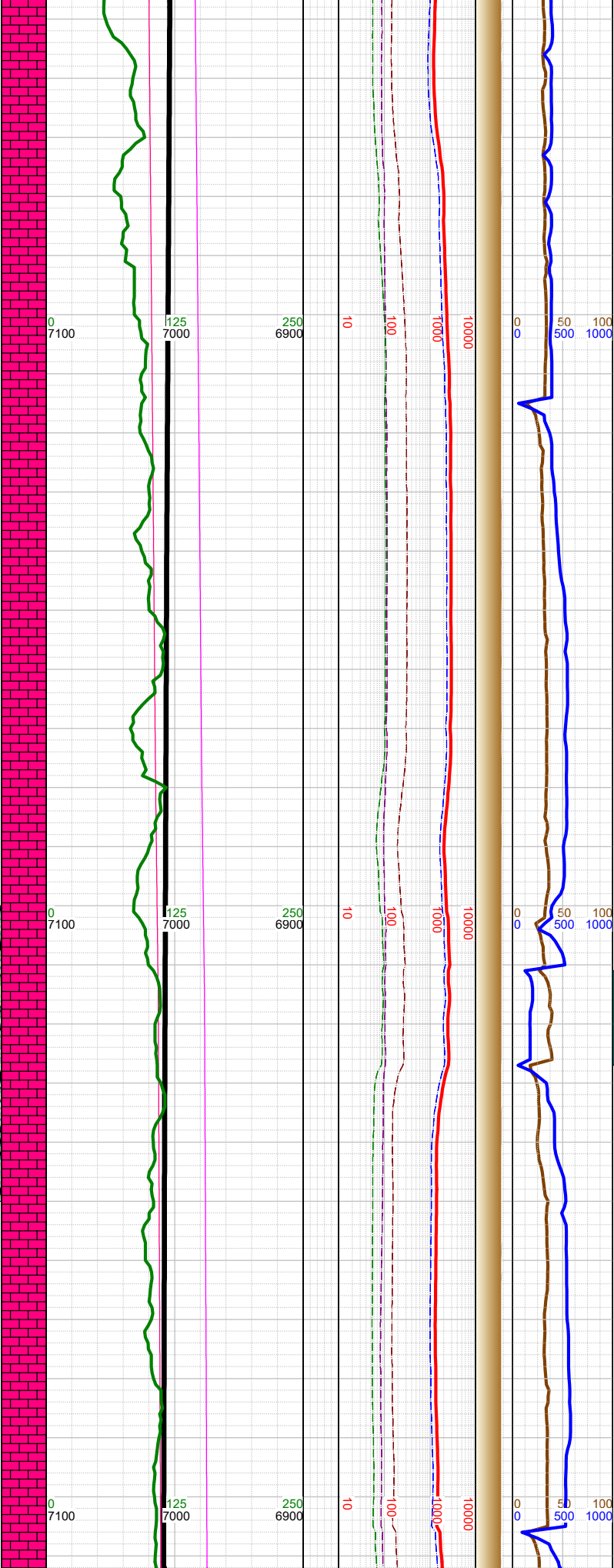
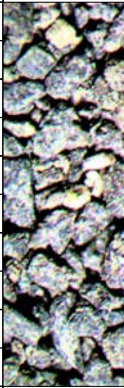
-8700 WT 8.9,
VIS 48

-8761 INC
91.47, AZM
89.87, TVD
6999.06

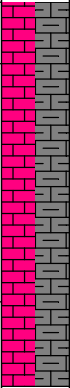
-8750 CHK: med gy, sft-
sbfrm, sbblky, mot, v calc,
rthy lstr; MARL: dk gy-blk,
sbblky-sbplty, sft-sbfrm,
mod calc, sl arg; tr pyr; tr
fos frags; mod forams;



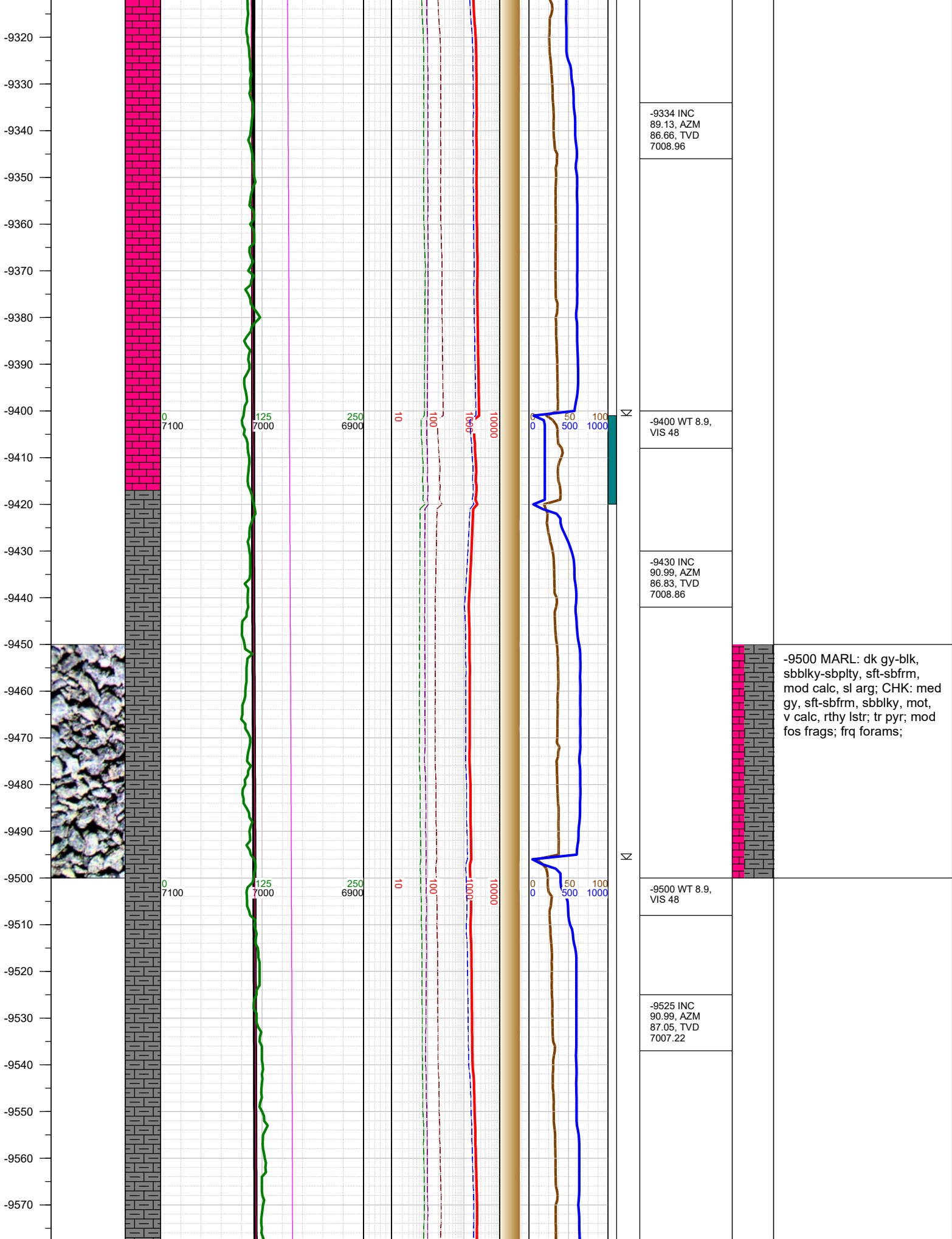
-9050
-9060
-9070
-9080
-9090
-9100
-9110
-9120
-9130
-9140
-9150
-9160
-9170
-9180
-9190
-9200
-9210
-9220
-9230
-9240
-9250
-9260
-9270
-9280
-9290
-9300
-9310

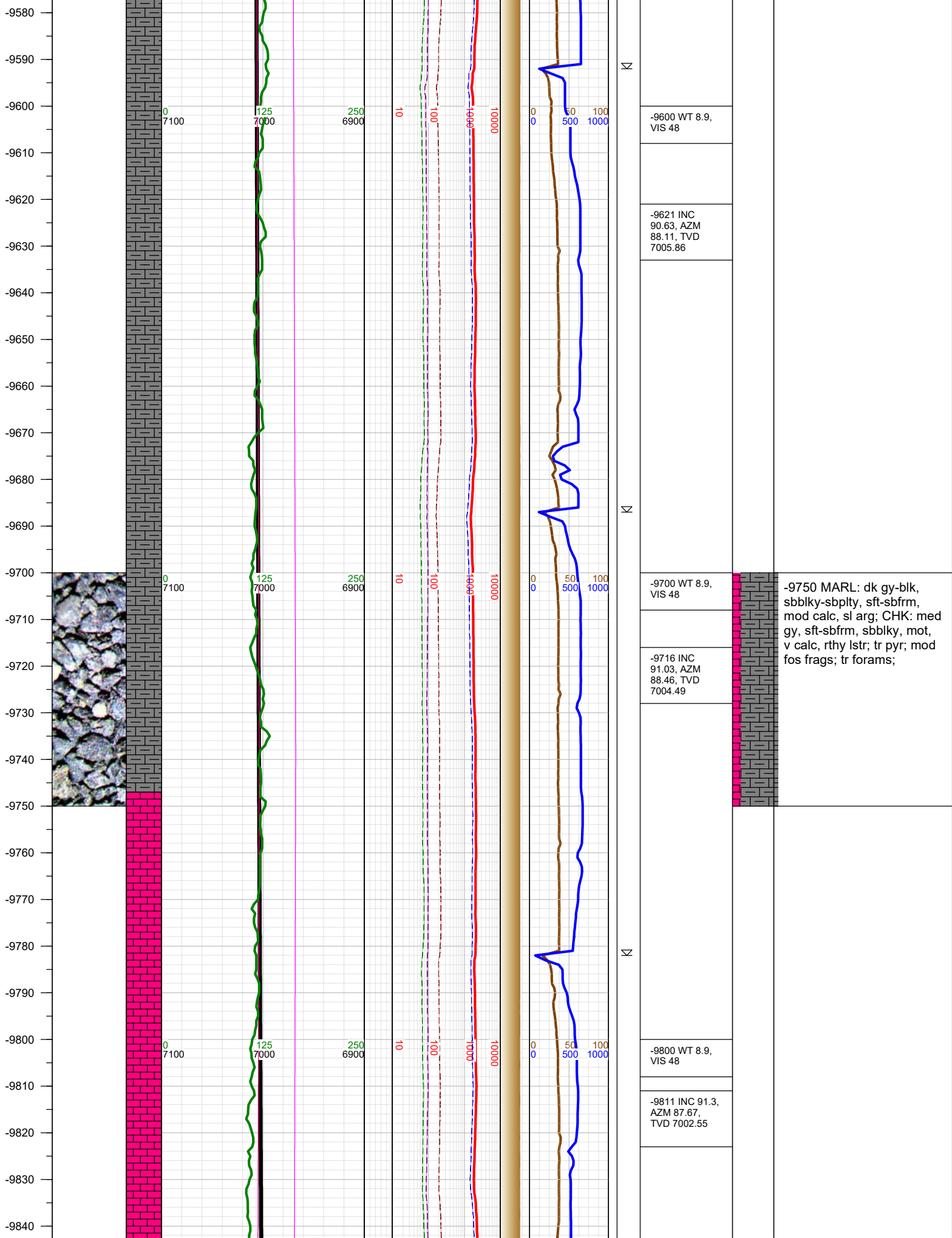


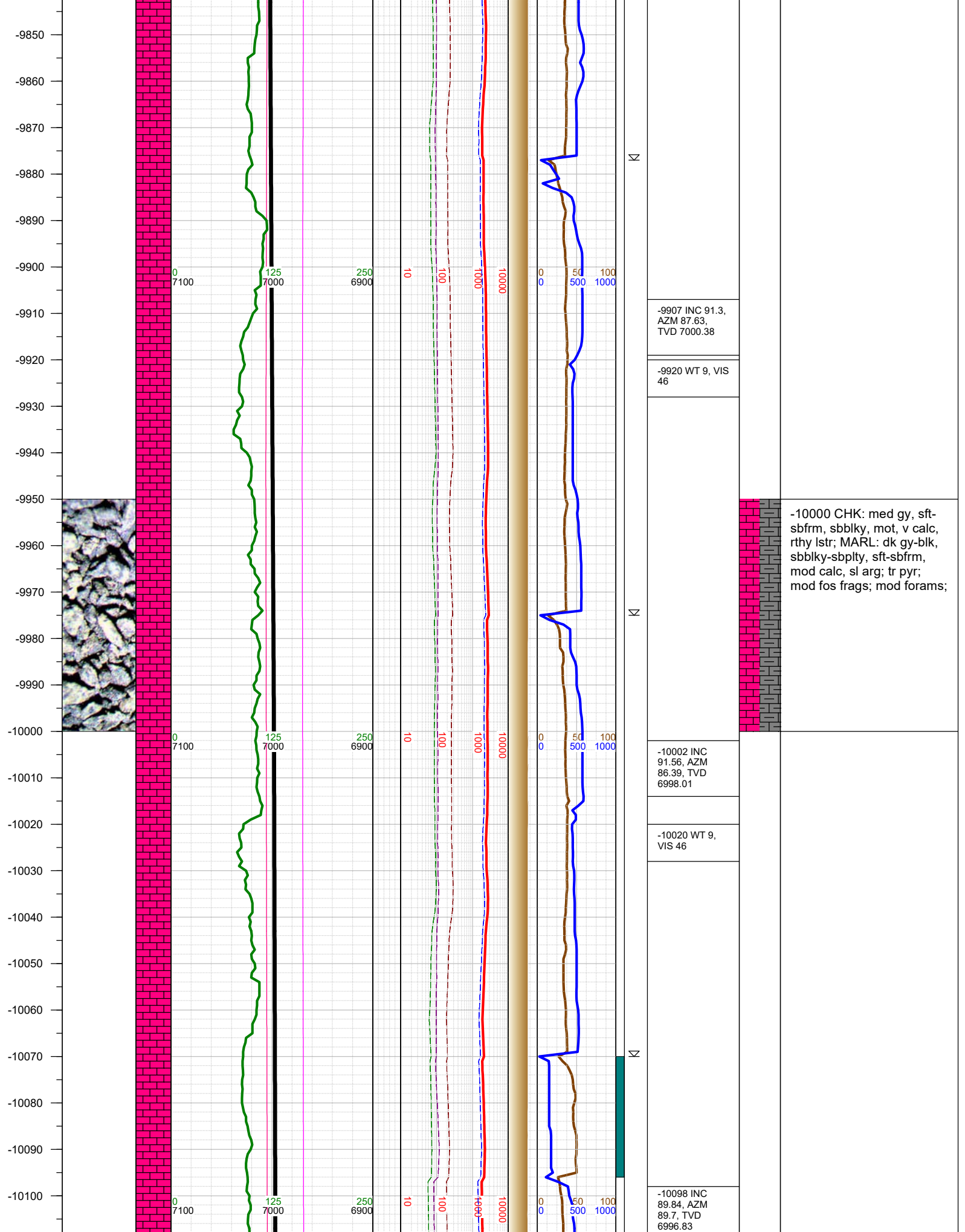
☀	-9048 INC 88.64, AZM 88.51, TVD 7003.91	
	-9100 WT 8.9, VIS 48	
N	-9143 INC 88.42, AZM 88.38, TVD 7006.35	
	-9200 WT 8.9, VIS 48	
N	-9239 INC 89.66, AZM 87.32, TVD 7007.96	
	-9300 WT 8.9, VIS 48	

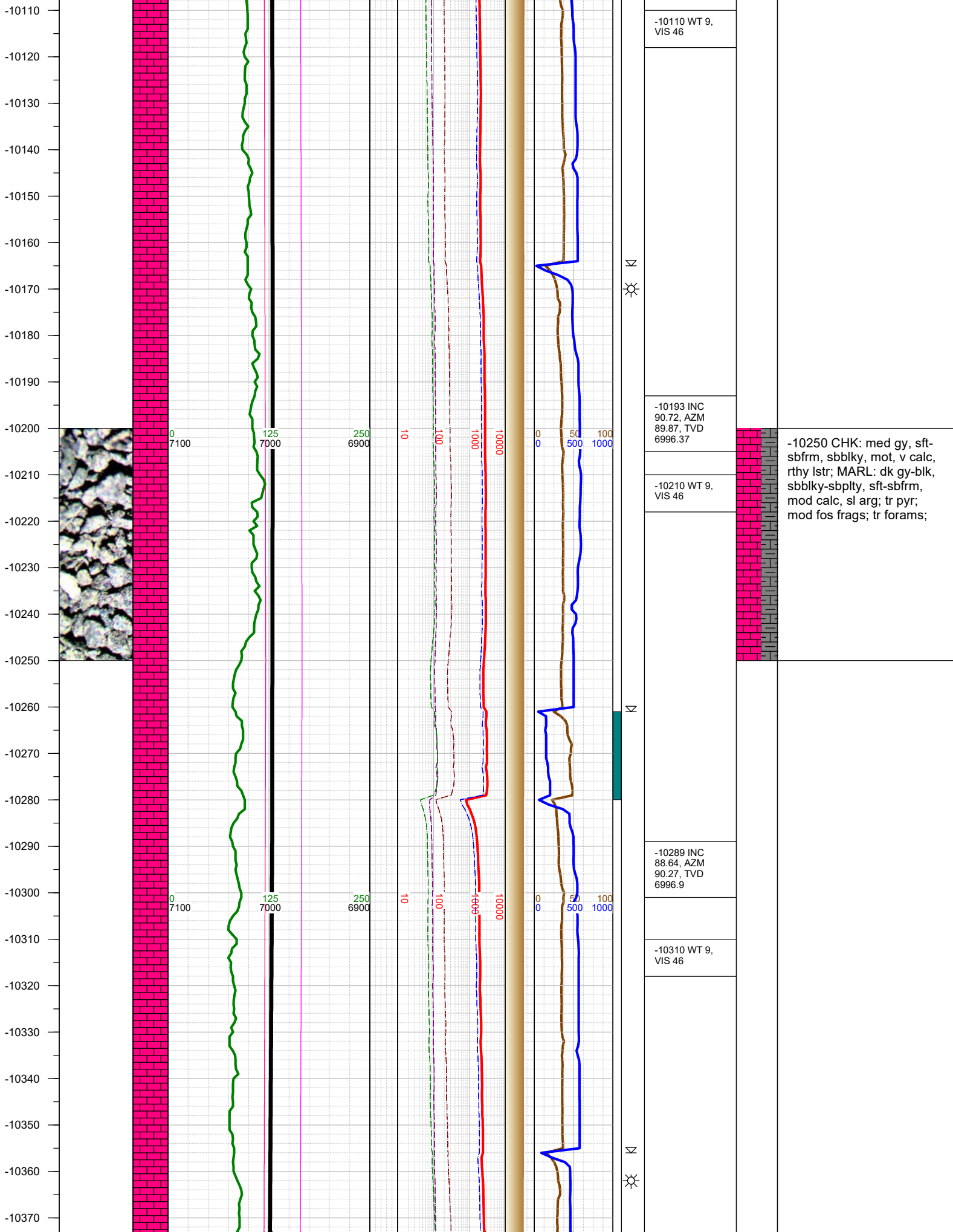


-9250 CHK: med gy, sft-sbfrm, sbblky, mot, v calc, rthy lstr; MARL: dk gy-blk, sbblky-sbplty, sft-sbfrm, mod calc, sl arg; tr pyr; frq fos frags; mod forams;

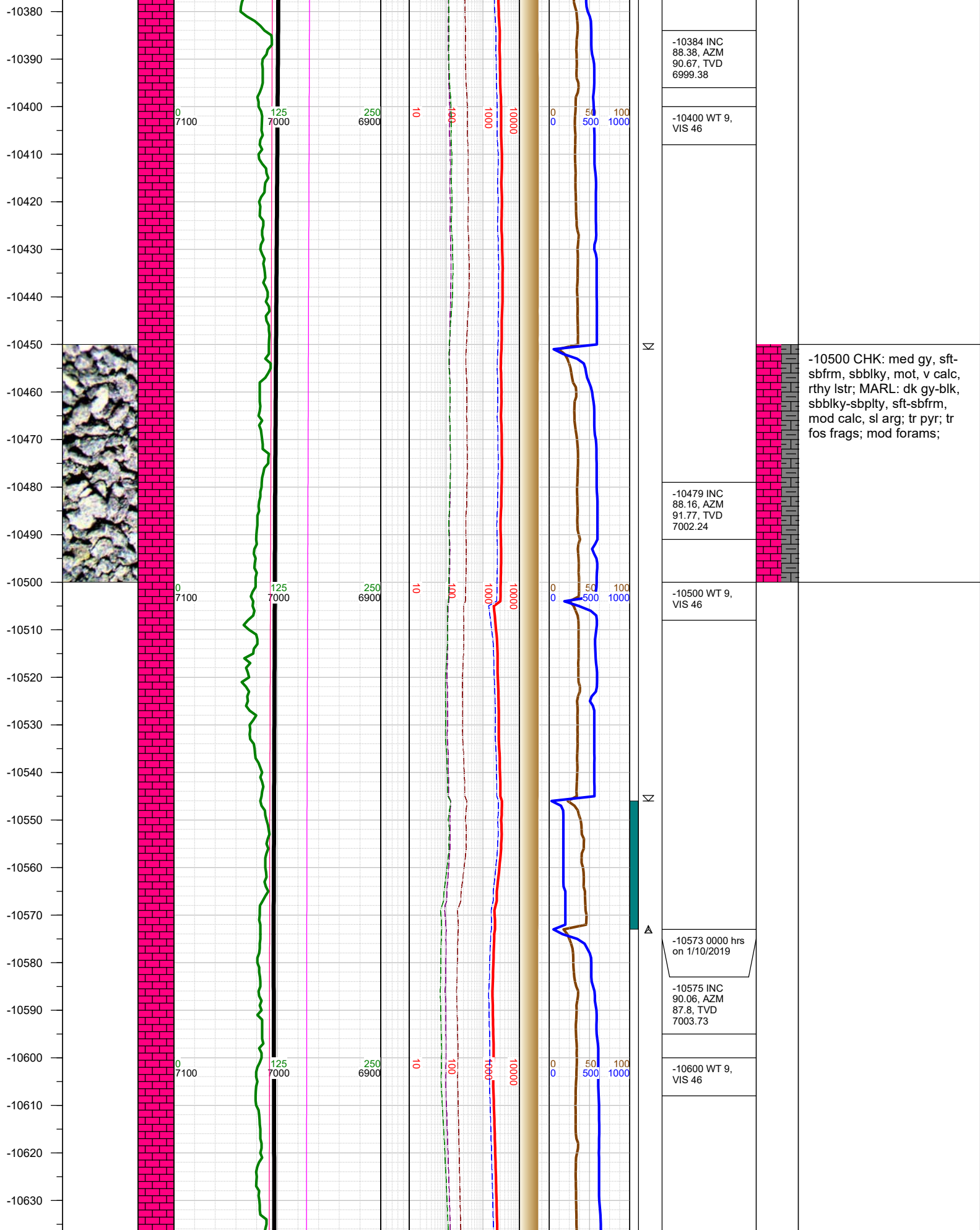


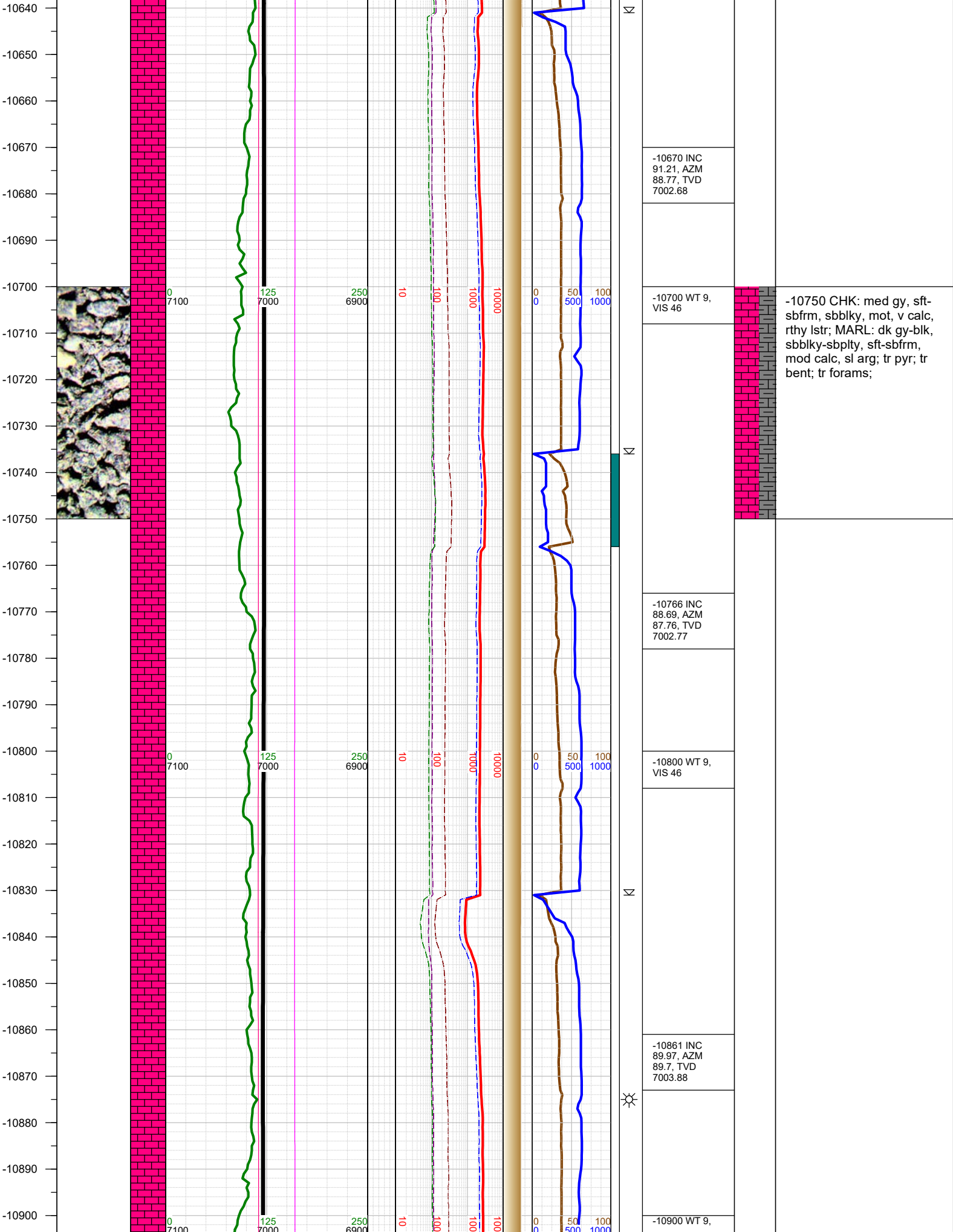


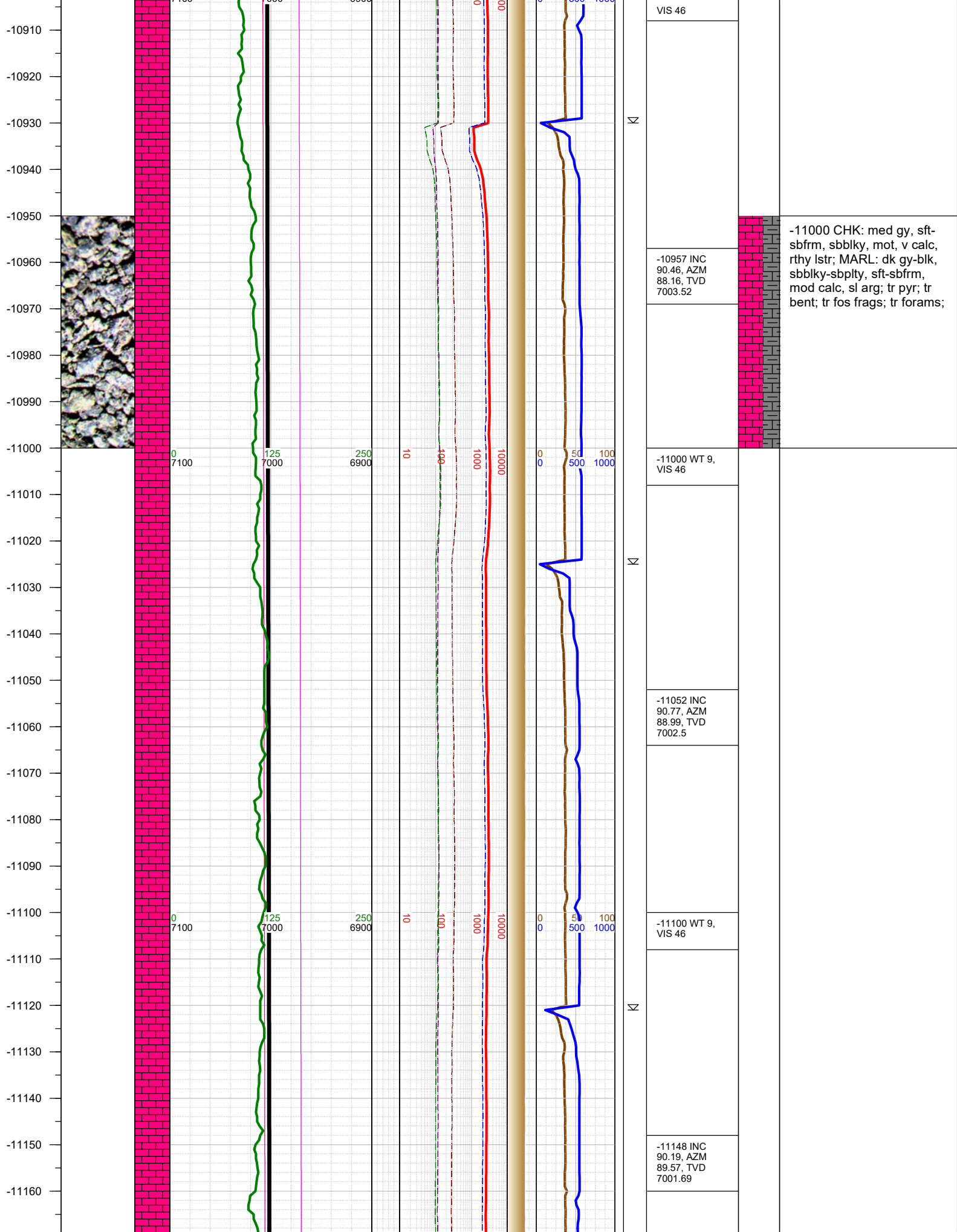


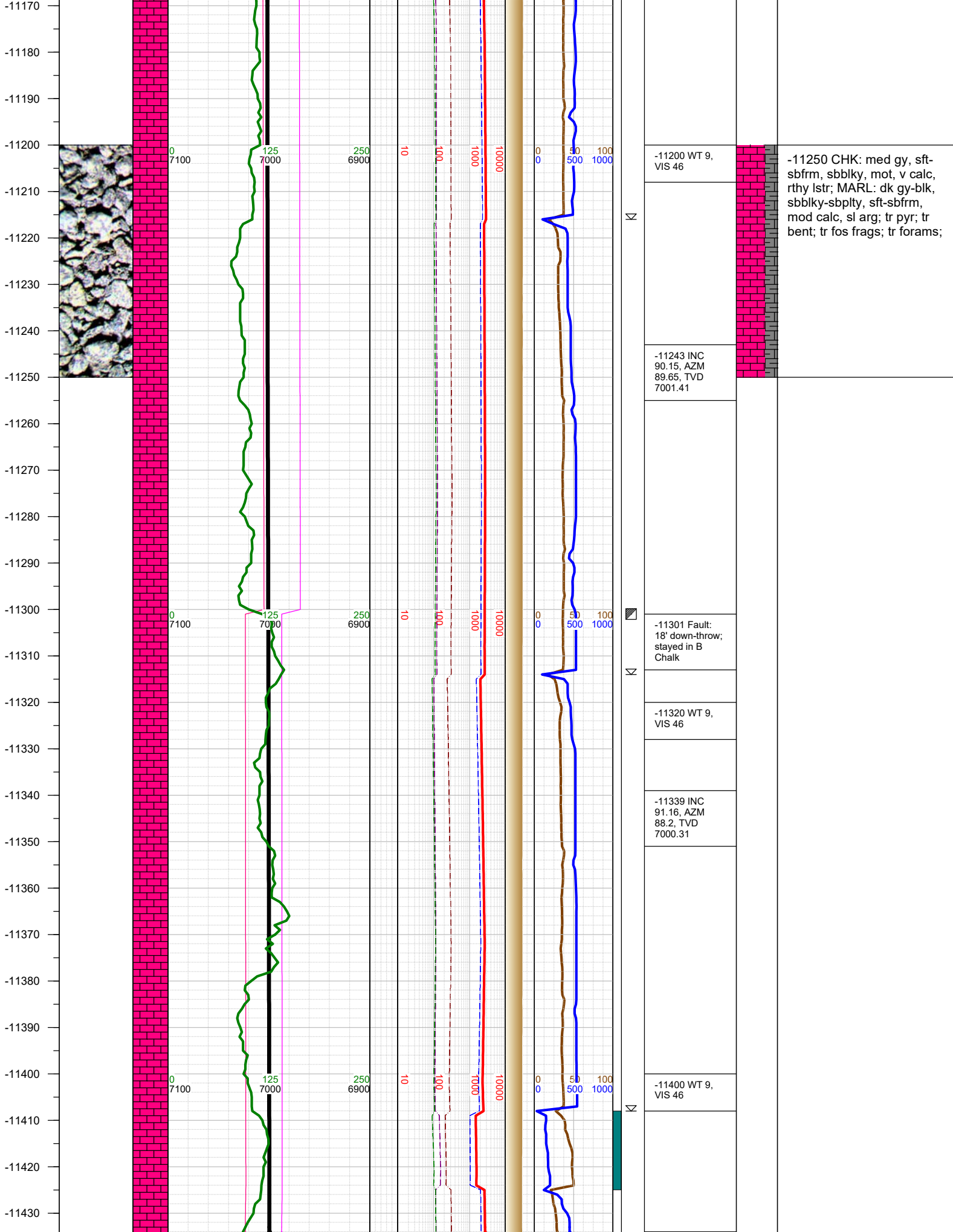


-10250 CHK: med gy, sft-sbfrm, sbblky, mot, v calc, rthy lstr; MARL: dk gy-blk, sbblky-sbply, sft-sbfrm, mod calc, sl arg; tr pyr; mod fos frags; tr forams;









-11200 WT 9,
VIS 46

-11250 CHK: med gy, sft-sbfrm, sbblky, mot, v calc, rthy lstr; MARL: dk gy-blk, sbblky-sbplty, sft-sbfrm, mod calc, sl arg; tr pyr; tr bent; tr fos frags; tr forams;

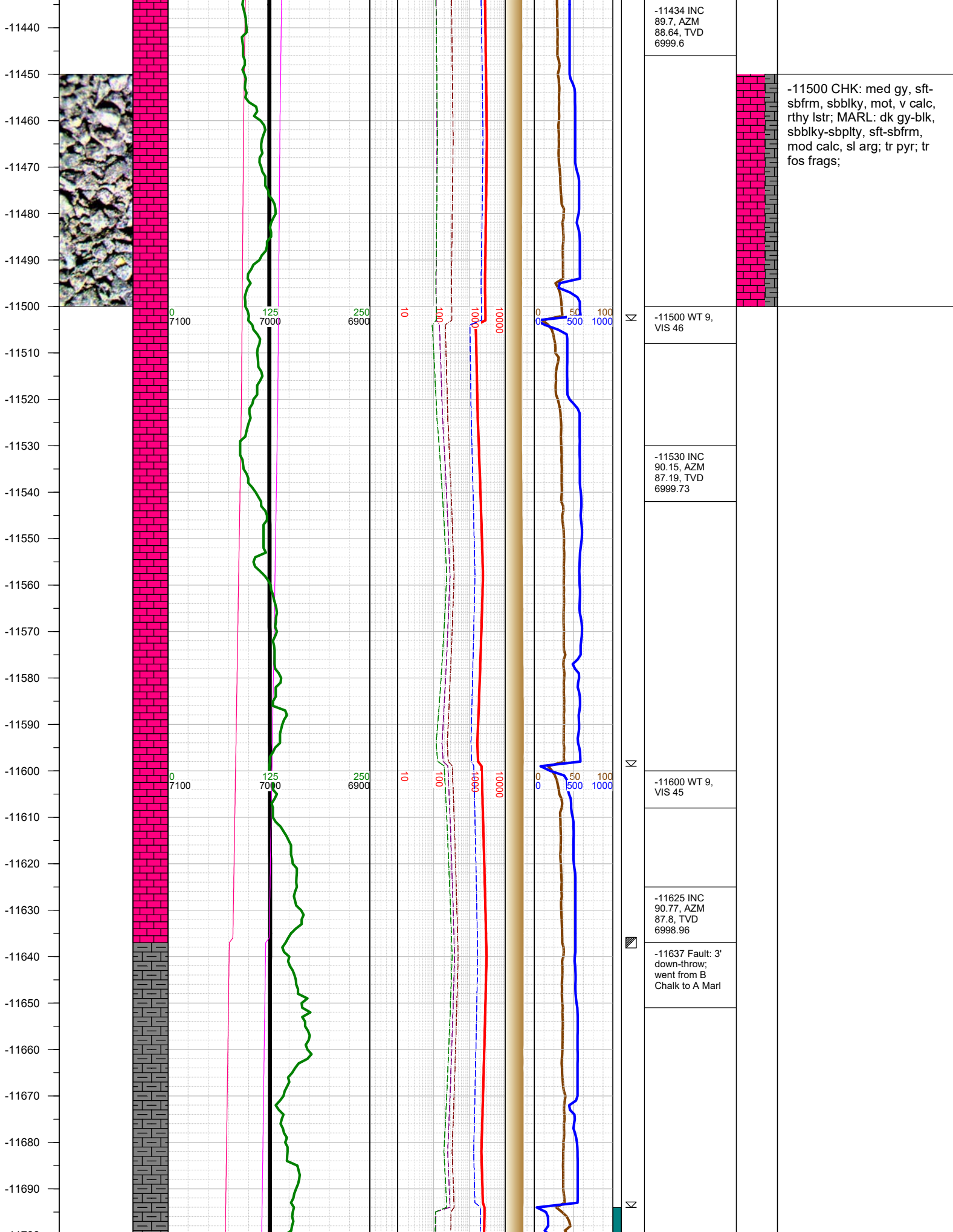
-11243 INC
90.15, AZM
89.65, TVD
7001.41

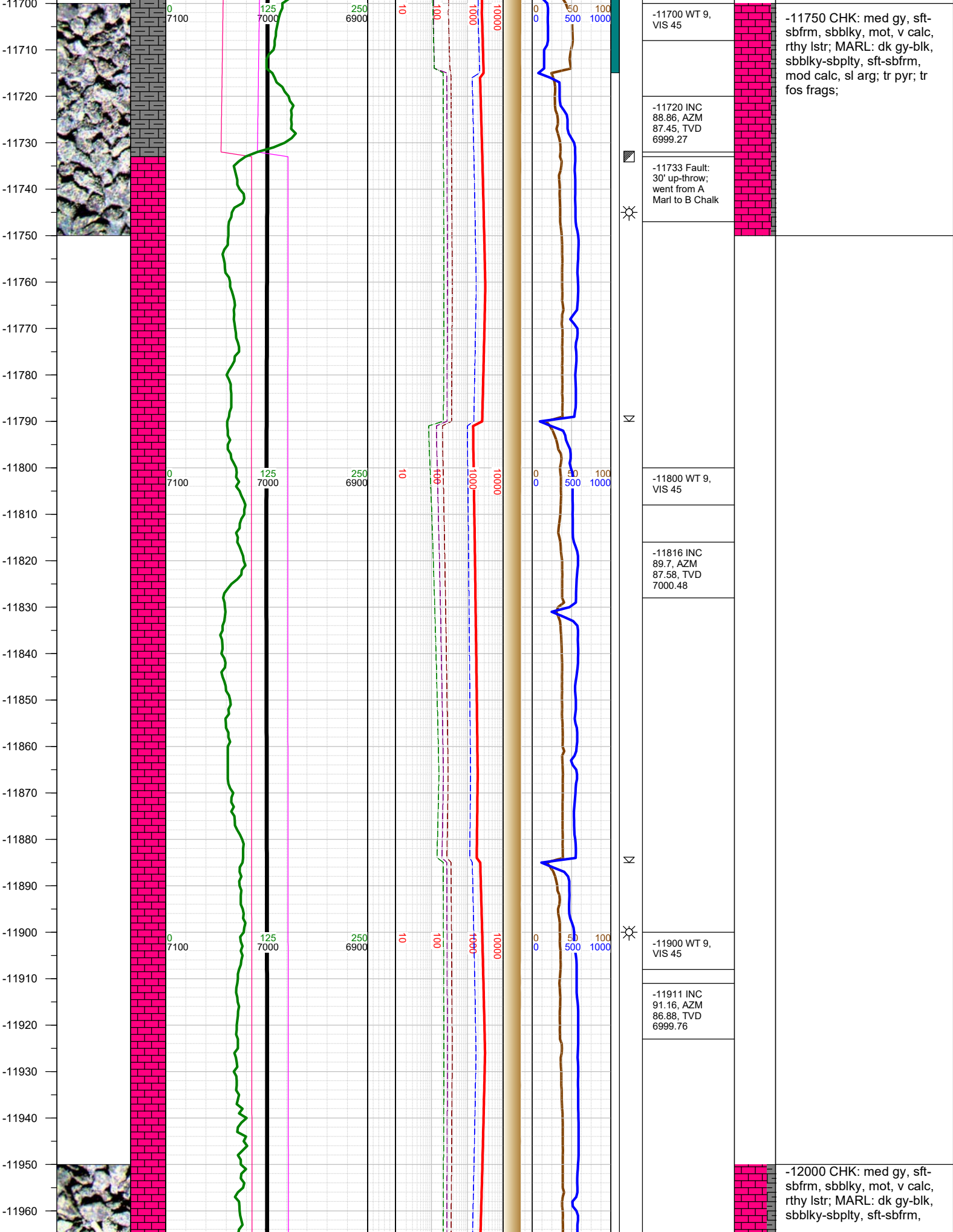
-11301 Fault:
18' down-throw;
stayed in B
Chalk

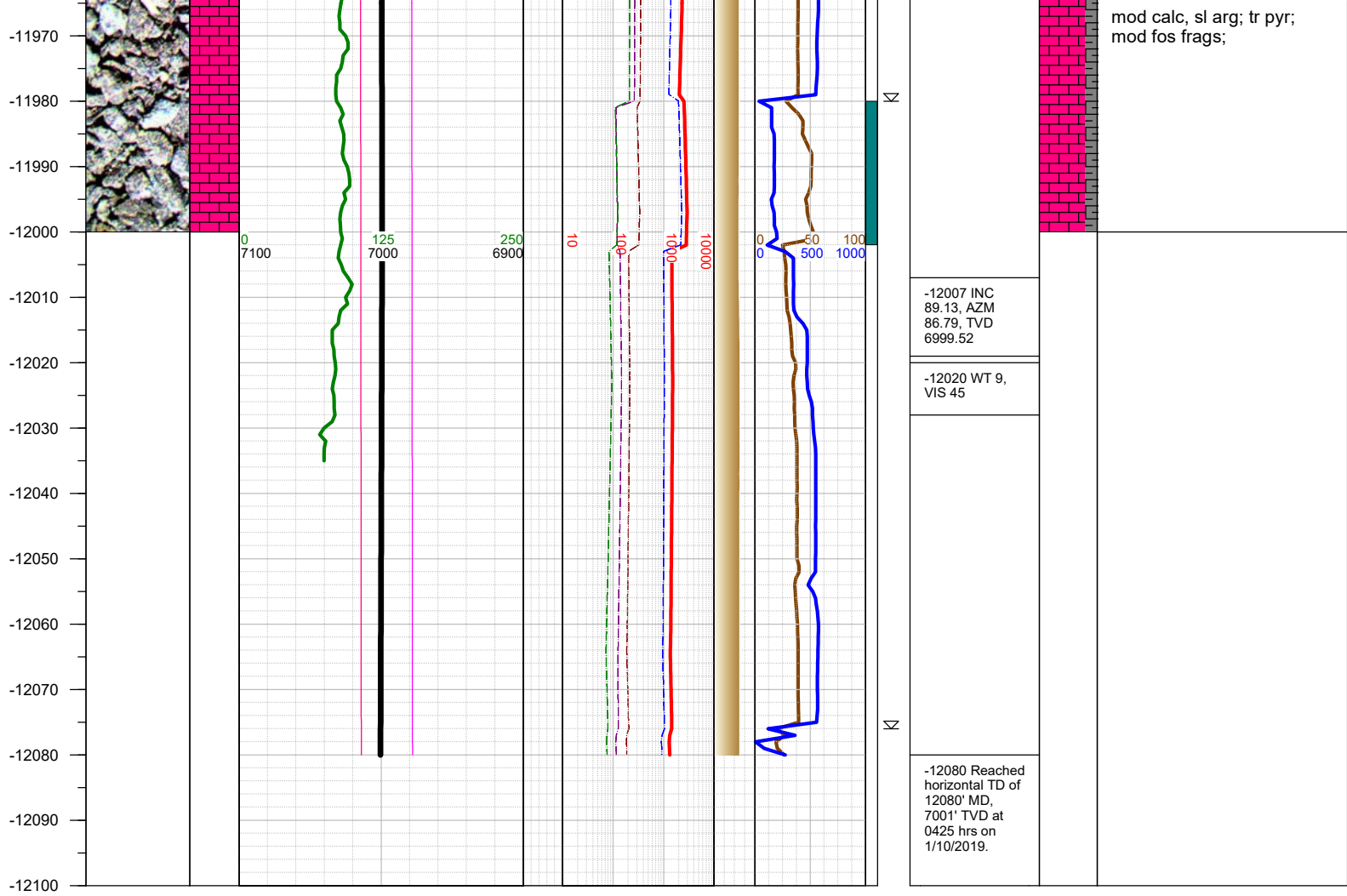
-11320 WT 9,
VIS 46

-11339 INC
91.16, AZM
88.2, TVD
7000.31

-11400 WT 9,
VIS 46







TOTAL DEPTH = 12080'

Thank you for using Earth Science Agency