

SRC ENERGY

WELD COUNTY (NAD83, TRUE NORTH)

6N-66W-06 GOLDEN EAGLE 1-6 PAD

GOLDEN EAGLE 21C-1-M

Wellbore #1

Plan: Design #2

Standard Planning Report

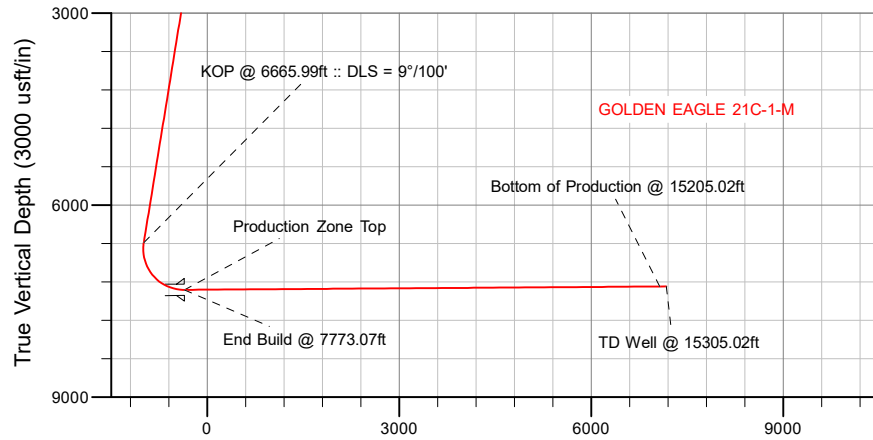
14 December, 2018

Project: WELD COUNTY (NAD83, TRUE NORTH)
Site: 6N-66W-06 GOLDEN EAGLE 1-6 PAD
Well: GOLDEN EAGLE 21C-1-M
Wellbore: Wellbore #1
Design: Design #2

SRC ENERGY

CASING DETAILS

TVD	MD	Name
1800.00	1816.58	9 5/8"
7324.00	7773.07	Production Zone Top



Vertical Section at 268.32° (3000 usft/in)

SECTION DETAILS

Sec	MD	Inc	Azi	TVD	+N/-S	+E/-W	Dleg	TFace	Vsect	Target
1	0.00	0.00	0.00	0.00	0.00	0.00	0.00	0.00	0.00	
2	250.00	0.00	0.00	250.00	0.00	0.00	0.00	0.00	0.00	
3	716.00	9.32	97.15	713.95	-4.71	37.52	2.00	97.15	-37.37	
4	6665.99	9.32	97.15	6585.39	-124.64	993.62	0.00	0.00	-989.53	
5	7773.07	90.40	269.51	7324.00	-146.29	360.96	9.00	172.25	-356.51	
6	15205.02	90.40	269.51	7272.00	-209.91	-7070.53	0.00	0.00	7073.65	GOLDEN EAGLE 21C-1-M_BPZ
7	15305.02	90.40	269.51	7271.30	-210.77	-7170.53	0.00	0.00	7173.62	

WELLBORE TARGET DETAILS (LAT/LONG)

Name	TVD	+N/-S	+E/-W	Latitude	Longitude
GOLDEN EAGLE 21C-1-M_SHL	0.00	0.00	0.00	40.520612	-104.814609
GOLDEN EAGLE 21C-1-M_BPZ	7272.00	-209.91	-7070.53	40.520033	-104.840041
GOLDEN EAGLE 21C-1-M_BHL	7271.30	-210.77	-7170.53	40.520031	-104.840401

WELL DETAILS: GOLDEN EAGLE 21C-1-M

GL = 4872'

RKB = 4' @ 4876.00usft (IKON 12)

Plan: Design #2 (GOLDEN EAGLE 21C-1-M/Wellbore #1)

Date: 12/14/2018

SHL
1099' FNL
498' FEL

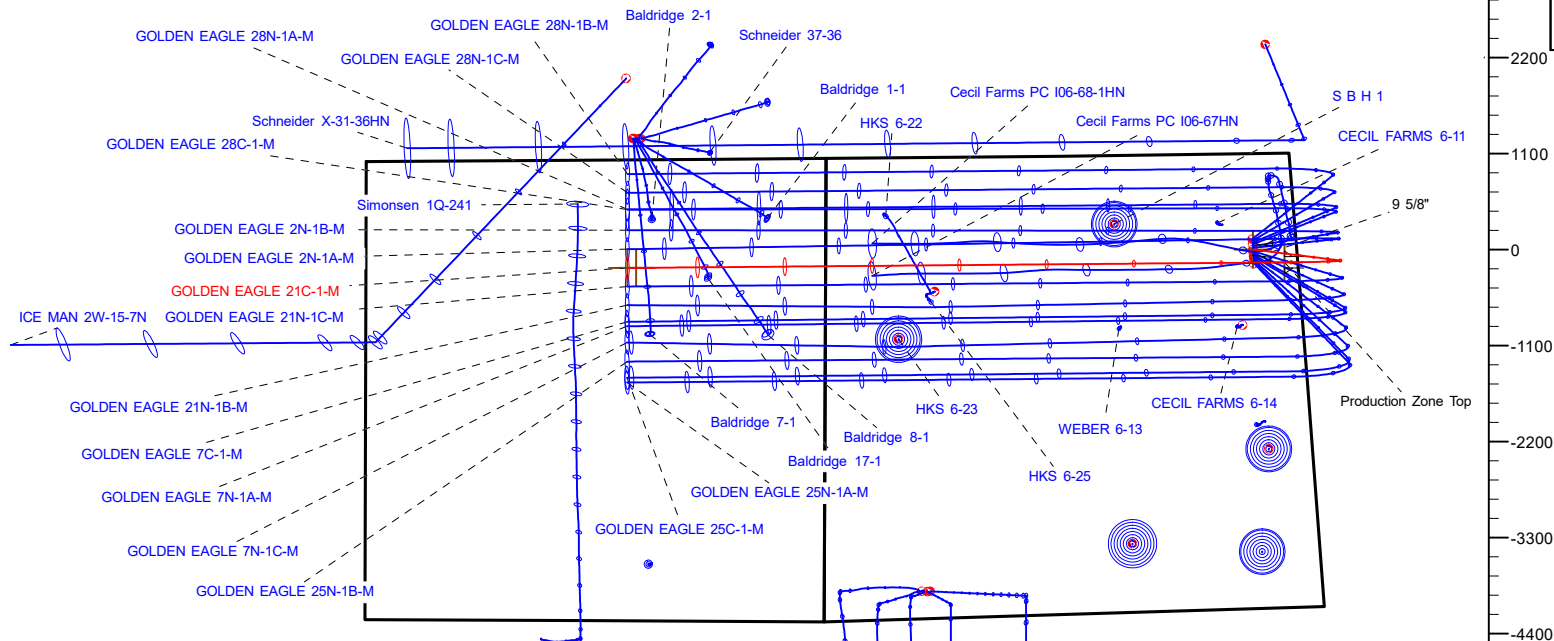
LP
1251' FNL
150' FEL
40.520209° Lat
-104.813312° Long

BPZ
1238' FNL
2171' FEL

BHL
1238' FNL
2271' FEL

West(-)/East(+) (2200 usft/in)

-14300 -13200 -12100 -11000 -9900 -8800 -7700 -6600 -5500 -4400 -3300 -2200 -1100 0 1100 2200



T M Azimuths to True North
Magnetic North: 8.09°
Magnetic Field
Strength: 52279.4snT
Dip Angle: 66.90°
Date: 12/12/2018
Model: IGRF2015

Hewlett-Packard

Planning Report

Database:	EDM 5000.14 Single User Db	Local Co-ordinate Reference:	Well GOLDEN EAGLE 21C-1-M
Company:	SRC ENERGY	TVD Reference:	RKB = 4' @ 4876.00usft (IKON 12)
Project:	WELD COUNTY (NAD83, TRUE NORTH)	MD Reference:	RKB = 4' @ 4876.00usft (IKON 12)
Site:	6N-66W-06 GOLDEN EAGLE 1-6 PAD	North Reference:	True
Well:	GOLDEN EAGLE 21C-1-M	Survey Calculation Method:	Minimum Curvature
Wellbore:	Wellbore #1		
Design:	Design #2		

Project	WELD COUNTY (NAD83, TRUE NORTH)		
Map System:	US State Plane 1983	System Datum:	Mean Sea Level
Geo Datum:	North American Datum 1983		
Map Zone:	Colorado Northern Zone		

Site		6N-66W-06 GOLDEN EAGLE 1-6 PAD			
Site Position:		Northing:	1,433,355.39 usft	Latitude:	40.520940
From:	Lat/Long	Easting:	3,190,536.32 usft	Longitude:	-104.814644
Position Uncertainty:	0.00 usft	Slot Radius:	13-3/16 "	Grid Convergence:	0.44 °

Well	GOLDEN EAGLE 21C-1-M					
Well Position	+N/-S	-119.50 usft	Northing:	1,433,235.97 usft	Latitude:	40.520612
	+E/-W	9.73 usft	Easting:	3,190,546.98 usft	Longitude:	-104.814609
Position Uncertainty		3.28 usft	Wellhead Elevation:		Ground Level:	4,872.00 usft

Wellbore	Wellbore #1				
Magnetics	Model Name	Sample Date	Declination (°)	Dip Angle (°)	Field Strength (nT)
	IGRF2015	12/12/2018	8.09	66.90	52,279.40489800

Design	Design #2				
Audit Notes:					
Version:		Phase:	PLAN	Tie On Depth:	0.00
Vertical Section:	Depth From (TVD) (usft)	+N/-S (usft)	+E/-W (usft)	Direction (°)	
	0.00	0.00	0.00	268.32	

Plan Survey Tool Program	Date	12/14/2018			
Depth From (usft)	Depth To (usft)	Survey (Wellbore)	Tool Name	Remarks	
1	0.00	1,800.00	Design #2 (Wellbore #1)	SRC Energy_ISCWSA REV 2	
				Fixed:v2:crustal field declinatio	
2	1,800.00	15,305.02	Design #2 (Wellbore #1)	SRC Energy_ISCWSA REV 2	
				Fixed:v2:Rockies, crustal dec +	

Hewlett-Packard
Planning Report

Database:	EDM 5000.14 Single User Db	Local Co-ordinate Reference:	Well GOLDEN EAGLE 21C-1-M
Company:	SRC ENERGY	TVD Reference:	RKB = 4' @ 4876.00usft (IKON 12)
Project:	WELD COUNTY (NAD83, TRUE NORTH)	MD Reference:	RKB = 4' @ 4876.00usft (IKON 12)
Site:	6N-66W-06 GOLDEN EAGLE 1-6 PAD	North Reference:	True
Well:	GOLDEN EAGLE 21C-1-M	Survey Calculation Method:	Minimum Curvature
Wellbore:	Wellbore #1		
Design:	Design #2		

Plan Sections										
Measured Depth (usft)	Inclination (°)	Azimuth (°)	Vertical Depth (usft)	+N/-S (usft)	+E/-W (usft)	Dogleg Rate (°/100usft)	Build Rate (°/100usft)	Turn Rate (°/100usft)	TFO (°)	Target
0.00	0.00	0.00	0.00	0.00	0.00	0.00	0.00	0.00	0.00	
250.00	0.00	0.00	250.00	0.00	0.00	0.00	0.00	0.00	0.00	
716.00	9.32	97.15	713.95	-4.71	37.52	2.00	2.00	0.00	97.15	
6,665.99	9.32	97.15	6,585.39	-124.64	993.62	0.00	0.00	0.00	0.00	
7,773.07	90.40	269.51	7,324.00	-146.29	360.96	9.00	7.32	15.57	172.25	
15,205.02	90.40	269.51	7,272.00	-209.91	-7,070.53	0.00	0.00	0.00	0.00	GOLDEN EAGLE 21C
15,305.02	90.40	269.51	7,271.30	-210.77	-7,170.53	0.00	0.00	0.00	0.00	

Hewlett-Packard

Planning Report

Database:	EDM 5000.14 Single User Db	Local Co-ordinate Reference:	Well GOLDEN EAGLE 21C-1-M
Company:	SRC ENERGY	TVD Reference:	RKB = 4' @ 4876.00usft (IKON 12)
Project:	WELD COUNTY (NAD83, TRUE NORTH)	MD Reference:	RKB = 4' @ 4876.00usft (IKON 12)
Site:	6N-66W-06 GOLDEN EAGLE 1-6 PAD	North Reference:	True
Well:	GOLDEN EAGLE 21C-1-M	Survey Calculation Method:	Minimum Curvature
Wellbore:	Wellbore #1		
Design:	Design #2		

Planned Survey									
Measured Depth (usft)	Inclination (°)	Azimuth (°)	Vertical Depth (usft)	+N/-S (usft)	+E/-W (usft)	Vertical Section (usft)	Dogleg Rate (°/100usft)	Build Rate (°/100usft)	Turn Rate (°/100usft)
0.00	0.00	0.00	0.00	0.00	0.00	0.00	0.00	0.00	0.00
100.00	0.00	0.00	100.00	0.00	0.00	0.00	0.00	0.00	0.00
200.00	0.00	0.00	200.00	0.00	0.00	0.00	0.00	0.00	0.00
250.00	0.00	0.00	250.00	0.00	0.00	0.00	0.00	0.00	0.00
Begin Nudge @ 250.00ft									
300.00	1.00	97.15	300.00	-0.05	0.43	-0.43	2.00	2.00	0.00
400.00	3.00	97.15	399.93	-0.49	3.90	-3.88	2.00	2.00	0.00
500.00	5.00	97.15	499.68	-1.36	10.82	-10.77	2.00	2.00	0.00
600.00	7.00	97.15	599.13	-2.66	21.19	-21.10	2.00	2.00	0.00
700.00	9.00	97.15	698.15	-4.39	35.00	-34.85	2.00	2.00	0.00
716.00	9.32	97.15	713.95	-4.71	37.52	-37.37	2.00	2.00	0.00
Hold Tangent @ 716.00ft									
800.00	9.32	97.15	796.84	-6.40	51.02	-50.81	0.00	0.00	0.00
900.00	9.32	97.15	895.52	-8.42	67.09	-66.81	0.00	0.00	0.00
1,000.00	9.32	97.15	994.20	-10.43	83.16	-82.82	0.00	0.00	0.00
1,100.00	9.32	97.15	1,092.88	-12.45	99.23	-98.82	0.00	0.00	0.00
1,200.00	9.32	97.15	1,191.56	-14.46	115.30	-114.82	0.00	0.00	0.00
1,300.00	9.32	97.15	1,290.24	-16.48	131.37	-130.82	0.00	0.00	0.00
1,400.00	9.32	97.15	1,388.92	-18.49	147.43	-146.83	0.00	0.00	0.00
1,500.00	9.32	97.15	1,487.60	-20.51	163.50	-162.83	0.00	0.00	0.00
1,600.00	9.32	97.15	1,586.28	-22.53	179.57	-178.83	0.00	0.00	0.00
1,700.00	9.32	97.15	1,684.96	-24.54	195.64	-194.84	0.00	0.00	0.00
1,800.00	9.32	97.15	1,783.64	-26.56	211.71	-210.84	0.00	0.00	0.00
1,816.58	9.32	97.15	1,800.00	-26.89	214.37	-213.49	0.00	0.00	0.00
9 5/8"									
1,900.00	9.32	97.15	1,882.32	-28.57	227.78	-226.84	0.00	0.00	0.00
2,000.00	9.32	97.15	1,981.00	-30.59	243.85	-242.84	0.00	0.00	0.00
2,100.00	9.32	97.15	2,079.68	-32.60	259.92	-258.85	0.00	0.00	0.00
2,200.00	9.32	97.15	2,178.36	-34.62	275.99	-274.85	0.00	0.00	0.00
2,300.00	9.32	97.15	2,277.04	-36.64	292.05	-290.85	0.00	0.00	0.00
2,400.00	9.32	97.15	2,375.72	-38.65	308.12	-306.85	0.00	0.00	0.00
2,500.00	9.32	97.15	2,474.40	-40.67	324.19	-322.86	0.00	0.00	0.00
2,600.00	9.32	97.15	2,573.08	-42.68	340.26	-338.86	0.00	0.00	0.00
2,700.00	9.32	97.15	2,671.76	-44.70	356.33	-354.86	0.00	0.00	0.00
2,800.00	9.32	97.15	2,770.44	-46.71	372.40	-370.87	0.00	0.00	0.00
2,900.00	9.32	97.15	2,869.12	-48.73	388.47	-386.87	0.00	0.00	0.00
3,000.00	9.32	97.15	2,967.80	-50.75	404.54	-402.87	0.00	0.00	0.00
3,100.00	9.32	97.15	3,066.48	-52.76	420.61	-418.87	0.00	0.00	0.00
3,200.00	9.32	97.15	3,165.16	-54.78	436.67	-434.88	0.00	0.00	0.00
3,300.00	9.32	97.15	3,263.84	-56.79	452.74	-450.88	0.00	0.00	0.00
3,400.00	9.32	97.15	3,362.52	-58.81	468.81	-466.88	0.00	0.00	0.00
3,500.00	9.32	97.15	3,461.20	-60.82	484.88	-482.88	0.00	0.00	0.00
3,600.00	9.32	97.15	3,559.88	-62.84	500.95	-498.89	0.00	0.00	0.00
3,700.00	9.32	97.15	3,658.56	-64.86	517.02	-514.89	0.00	0.00	0.00
3,800.00	9.32	97.15	3,757.24	-66.87	533.09	-530.89	0.00	0.00	0.00
3,900.00	9.32	97.15	3,855.92	-68.89	549.16	-546.90	0.00	0.00	0.00
4,000.00	9.32	97.15	3,954.60	-70.90	565.23	-562.90	0.00	0.00	0.00
4,100.00	9.32	97.15	4,053.28	-72.92	581.29	-578.90	0.00	0.00	0.00
4,200.00	9.32	97.15	4,151.96	-74.94	597.36	-594.90	0.00	0.00	0.00
4,300.00	9.32	97.15	4,250.64	-76.95	613.43	-610.91	0.00	0.00	0.00
4,400.00	9.32	97.15	4,349.32	-78.97	629.50	-626.91	0.00	0.00	0.00
4,500.00	9.32	97.15	4,448.00	-80.98	645.57	-642.91	0.00	0.00	0.00
4,600.00	9.32	97.15	4,546.68	-83.00	661.64	-658.91	0.00	0.00	0.00

Hewlett-Packard

Planning Report

Database:	EDM 5000.14 Single User Db	Local Co-ordinate Reference:	Well GOLDEN EAGLE 21C-1-M
Company:	SRC ENERGY	TVD Reference:	RKB = 4' @ 4876.00usft (IKON 12)
Project:	WELD COUNTY (NAD83, TRUE NORTH)	MD Reference:	RKB = 4' @ 4876.00usft (IKON 12)
Site:	6N-66W-06 GOLDEN EAGLE 1-6 PAD	North Reference:	True
Well:	GOLDEN EAGLE 21C-1-M	Survey Calculation Method:	Minimum Curvature
Wellbore:	Wellbore #1		
Design:	Design #2		

Planned Survey									
Measured Depth (usft)	Inclination (°)	Azimuth (°)	Vertical Depth (usft)	+N/-S (usft)	+E/-W (usft)	Vertical Section (usft)	Dogleg Rate (°/100usft)	Build Rate (°/100usft)	Turn Rate (°/100usft)
4,700.00	9.32	97.15	4,645.36	-85.01	677.71	-674.92	0.00	0.00	0.00
4,800.00	9.32	97.15	4,744.04	-87.03	693.78	-690.92	0.00	0.00	0.00
4,900.00	9.32	97.15	4,842.72	-89.05	709.85	-706.92	0.00	0.00	0.00
5,000.00	9.32	97.15	4,941.40	-91.06	725.91	-722.93	0.00	0.00	0.00
5,100.00	9.32	97.15	5,040.08	-93.08	741.98	-738.93	0.00	0.00	0.00
5,200.00	9.32	97.15	5,138.76	-95.09	758.05	-754.93	0.00	0.00	0.00
5,300.00	9.32	97.15	5,237.44	-97.11	774.12	-770.93	0.00	0.00	0.00
5,400.00	9.32	97.15	5,336.12	-99.12	790.19	-786.94	0.00	0.00	0.00
5,500.00	9.32	97.15	5,434.80	-101.14	806.26	-802.94	0.00	0.00	0.00
5,600.00	9.32	97.15	5,533.48	-103.16	822.33	-818.94	0.00	0.00	0.00
5,700.00	9.32	97.15	5,632.16	-105.17	838.40	-834.94	0.00	0.00	0.00
5,800.00	9.32	97.15	5,730.84	-107.19	854.47	-850.95	0.00	0.00	0.00
5,900.00	9.32	97.15	5,829.52	-109.20	870.53	-866.95	0.00	0.00	0.00
6,000.00	9.32	97.15	5,928.20	-111.22	886.60	-882.95	0.00	0.00	0.00
6,100.00	9.32	97.15	6,026.87	-113.23	902.67	-898.96	0.00	0.00	0.00
6,200.00	9.32	97.15	6,125.55	-115.25	918.74	-914.96	0.00	0.00	0.00
6,300.00	9.32	97.15	6,224.23	-117.27	934.81	-930.96	0.00	0.00	0.00
6,400.00	9.32	97.15	6,322.91	-119.28	950.88	-946.96	0.00	0.00	0.00
6,500.00	9.32	97.15	6,421.59	-121.30	966.95	-962.97	0.00	0.00	0.00
6,600.00	9.32	97.15	6,520.27	-123.31	983.02	-978.97	0.00	0.00	0.00
6,665.99	9.32	97.15	6,585.39	-124.64	993.62	-989.53	0.00	0.00	0.00
KOP @ 6665.99ft :: DLS = 9°/100'									
6,700.00	6.30	100.91	6,619.08	-125.34	998.19	-994.07	9.00	-8.88	11.06
6,800.00	3.09	245.62	6,718.91	-127.49	1,001.13	-996.95	9.00	-3.21	144.71
6,900.00	11.89	263.55	6,817.97	-129.77	988.41	-984.17	9.00	8.80	17.92
7,000.00	20.86	266.21	6,913.82	-132.11	960.35	-956.05	9.00	8.97	2.67
7,100.00	29.85	267.32	7,004.10	-134.45	917.64	-913.29	9.00	8.99	1.10
7,200.00	38.84	267.95	7,086.58	-136.74	861.33	-856.94	9.00	8.99	0.63
7,300.00	47.84	268.37	7,159.23	-138.93	792.80	-788.38	9.00	9.00	0.42
7,400.00	56.83	268.68	7,220.27	-140.95	713.75	-709.30	9.00	9.00	0.32
7,500.00	65.83	268.94	7,268.20	-142.76	626.12	-621.65	9.00	9.00	0.26
7,600.00	74.83	269.16	7,301.82	-144.32	532.06	-527.59	9.00	9.00	0.22
7,700.00	83.83	269.37	7,320.33	-145.58	433.90	-429.43	9.00	9.00	0.20
7,773.07	90.40	269.51	7,324.00	-146.29	360.97	-356.51	9.00	9.00	0.20
End Build @ 7773.07ft - Production Zone Top									
7,800.00	90.40	269.51	7,323.82	-146.52	334.04	-329.59	0.00	0.00	0.00
7,900.00	90.40	269.51	7,323.12	-147.38	234.04	-229.61	0.00	0.00	0.00
8,000.00	90.40	269.51	7,322.42	-148.23	134.05	-129.64	0.00	0.00	0.00
8,100.00	90.40	269.51	7,321.72	-149.09	34.06	-29.66	0.00	0.00	0.00
8,200.00	90.40	269.51	7,321.02	-149.95	-65.94	70.32	0.00	0.00	0.00
8,300.00	90.40	269.51	7,320.32	-150.80	-165.93	170.29	0.00	0.00	0.00
8,400.00	90.40	269.51	7,319.62	-151.66	-265.93	270.27	0.00	0.00	0.00
8,500.00	90.40	269.51	7,318.92	-152.51	-365.92	370.24	0.00	0.00	0.00
8,600.00	90.40	269.51	7,318.22	-153.37	-465.91	470.22	0.00	0.00	0.00
8,700.00	90.40	269.51	7,317.52	-154.23	-565.91	570.19	0.00	0.00	0.00
8,800.00	90.40	269.51	7,316.82	-155.08	-665.90	670.17	0.00	0.00	0.00
8,900.00	90.40	269.51	7,316.12	-155.94	-765.90	770.15	0.00	0.00	0.00
9,000.00	90.40	269.51	7,315.42	-156.79	-865.89	870.12	0.00	0.00	0.00
9,100.00	90.40	269.51	7,314.72	-157.65	-965.88	970.10	0.00	0.00	0.00
9,200.00	90.40	269.51	7,314.02	-158.51	-1,065.88	1,070.07	0.00	0.00	0.00
9,300.00	90.40	269.51	7,313.32	-159.36	-1,165.87	1,170.05	0.00	0.00	0.00
9,400.00	90.40	269.51	7,312.62	-160.22	-1,265.86	1,270.03	0.00	0.00	0.00
9,500.00	90.40	269.51	7,311.92	-161.07	-1,365.86	1,370.00	0.00	0.00	0.00
9,600.00	90.40	269.51	7,311.22	-161.93	-1,465.85	1,469.98	0.00	0.00	0.00

Hewlett-Packard

Planning Report

Database:	EDM 5000.14 Single User Db	Local Co-ordinate Reference:	Well GOLDEN EAGLE 21C-1-M
Company:	SRC ENERGY	TVD Reference:	RKB = 4' @ 4876.00usft (IKON 12)
Project:	WELD COUNTY (NAD83, TRUE NORTH)	MD Reference:	RKB = 4' @ 4876.00usft (IKON 12)
Site:	6N-66W-06 GOLDEN EAGLE 1-6 PAD	North Reference:	True
Well:	GOLDEN EAGLE 21C-1-M	Survey Calculation Method:	Minimum Curvature
Wellbore:	Wellbore #1		
Design:	Design #2		

Planned Survey										
Measured Depth (usft)	Inclination (°)	Azimuth (°)	Vertical Depth (usft)	+N/-S (usft)	+E/-W (usft)	Vertical Section (usft)	Dogleg Rate (°/100usft)	Build Rate (°/100usft)	Turn Rate (°/100usft)	
9,700.00	90.40	269.51	7,310.52	-162.79	-1,565.85	1,569.95	0.00	0.00	0.00	
9,800.00	90.40	269.51	7,309.82	-163.64	-1,665.84	1,669.93	0.00	0.00	0.00	
9,900.00	90.40	269.51	7,309.12	-164.50	-1,765.83	1,769.91	0.00	0.00	0.00	
10,000.00	90.40	269.51	7,308.42	-165.35	-1,865.83	1,869.88	0.00	0.00	0.00	
10,100.00	90.40	269.51	7,307.72	-166.21	-1,965.82	1,969.86	0.00	0.00	0.00	
10,200.00	90.40	269.51	7,307.02	-167.07	-2,065.82	2,069.83	0.00	0.00	0.00	
10,300.00	90.40	269.51	7,306.32	-167.92	-2,165.81	2,169.81	0.00	0.00	0.00	
10,400.00	90.40	269.51	7,305.62	-168.78	-2,265.80	2,269.78	0.00	0.00	0.00	
10,500.00	90.40	269.51	7,304.92	-169.63	-2,365.80	2,369.76	0.00	0.00	0.00	
10,600.00	90.40	269.51	7,304.22	-170.49	-2,465.79	2,469.74	0.00	0.00	0.00	
10,700.00	90.40	269.51	7,303.52	-171.35	-2,565.79	2,569.71	0.00	0.00	0.00	
10,800.00	90.40	269.51	7,302.82	-172.20	-2,665.78	2,669.69	0.00	0.00	0.00	
10,900.00	90.40	269.51	7,302.12	-173.06	-2,765.77	2,769.66	0.00	0.00	0.00	
11,000.00	90.40	269.51	7,301.42	-173.92	-2,865.77	2,869.64	0.00	0.00	0.00	
11,100.00	90.40	269.51	7,300.72	-174.77	-2,965.76	2,969.62	0.00	0.00	0.00	
11,200.00	90.40	269.51	7,300.02	-175.63	-3,065.75	3,069.59	0.00	0.00	0.00	
11,300.00	90.40	269.51	7,299.32	-176.48	-3,165.75	3,169.57	0.00	0.00	0.00	
11,400.00	90.40	269.51	7,298.62	-177.34	-3,265.74	3,269.54	0.00	0.00	0.00	
11,500.00	90.40	269.51	7,297.93	-178.20	-3,365.74	3,369.52	0.00	0.00	0.00	
11,600.00	90.40	269.51	7,297.23	-179.05	-3,465.73	3,469.50	0.00	0.00	0.00	
11,700.00	90.40	269.51	7,296.53	-179.91	-3,565.72	3,569.47	0.00	0.00	0.00	
11,800.00	90.40	269.51	7,295.83	-180.76	-3,665.72	3,669.45	0.00	0.00	0.00	
11,900.00	90.40	269.51	7,295.13	-181.62	-3,765.71	3,769.42	0.00	0.00	0.00	
12,000.00	90.40	269.51	7,294.43	-182.48	-3,865.71	3,869.40	0.00	0.00	0.00	
12,100.00	90.40	269.51	7,293.73	-183.33	-3,965.70	3,969.37	0.00	0.00	0.00	
12,200.00	90.40	269.51	7,293.03	-184.19	-4,065.69	4,069.35	0.00	0.00	0.00	
12,300.00	90.40	269.51	7,292.33	-185.04	-4,165.69	4,169.33	0.00	0.00	0.00	
12,400.00	90.40	269.51	7,291.63	-185.90	-4,265.68	4,269.30	0.00	0.00	0.00	
12,500.00	90.40	269.51	7,290.93	-186.76	-4,365.68	4,369.28	0.00	0.00	0.00	
12,600.00	90.40	269.51	7,290.23	-187.61	-4,465.67	4,469.25	0.00	0.00	0.00	
12,700.00	90.40	269.51	7,289.53	-188.47	-4,565.66	4,569.23	0.00	0.00	0.00	
12,800.00	90.40	269.51	7,288.83	-189.32	-4,665.66	4,669.21	0.00	0.00	0.00	
12,900.00	90.40	269.51	7,288.13	-190.18	-4,765.65	4,769.18	0.00	0.00	0.00	
13,000.00	90.40	269.51	7,287.43	-191.04	-4,865.64	4,869.16	0.00	0.00	0.00	
13,100.00	90.40	269.51	7,286.73	-191.89	-4,965.64	4,969.13	0.00	0.00	0.00	
13,200.00	90.40	269.51	7,286.03	-192.75	-5,065.63	5,069.11	0.00	0.00	0.00	
13,300.00	90.40	269.51	7,285.33	-193.60	-5,165.63	5,169.08	0.00	0.00	0.00	
13,400.00	90.40	269.51	7,284.63	-194.46	-5,265.62	5,269.06	0.00	0.00	0.00	
13,500.00	90.40	269.51	7,283.93	-195.32	-5,365.61	5,369.04	0.00	0.00	0.00	
13,600.00	90.40	269.51	7,283.23	-196.17	-5,465.61	5,469.01	0.00	0.00	0.00	
13,700.00	90.40	269.51	7,282.53	-197.03	-5,565.60	5,568.99	0.00	0.00	0.00	
13,800.00	90.40	269.51	7,281.83	-197.88	-5,665.60	5,668.96	0.00	0.00	0.00	
13,900.00	90.40	269.51	7,281.13	-198.74	-5,765.59	5,768.94	0.00	0.00	0.00	
14,000.00	90.40	269.51	7,280.43	-199.60	-5,865.58	5,868.92	0.00	0.00	0.00	
14,100.00	90.40	269.51	7,279.73	-200.45	-5,965.58	5,968.89	0.00	0.00	0.00	
14,200.00	90.40	269.51	7,279.03	-201.31	-6,065.57	6,068.87	0.00	0.00	0.00	
14,300.00	90.40	269.51	7,278.33	-202.16	-6,165.57	6,168.84	0.00	0.00	0.00	
14,400.00	90.40	269.51	7,277.63	-203.02	-6,265.56	6,268.82	0.00	0.00	0.00	
14,500.00	90.40	269.51	7,276.93	-203.88	-6,365.55	6,368.80	0.00	0.00	0.00	
14,600.00	90.40	269.51	7,276.23	-204.73	-6,465.55	6,468.77	0.00	0.00	0.00	
14,700.00	90.40	269.51	7,275.53	-205.59	-6,565.54	6,568.75	0.00	0.00	0.00	
14,800.00	90.40	269.51	7,274.83	-206.44	-6,665.53	6,668.72	0.00	0.00	0.00	
14,900.00	90.40	269.51	7,274.13	-207.30	-6,765.53	6,768.70	0.00	0.00	0.00	
15,000.00	90.40	269.51	7,273.43	-208.16	-6,865.52	6,868.67	0.00	0.00	0.00	

Hewlett-Packard

Planning Report

Database:	EDM 5000.14 Single User Db	Local Co-ordinate Reference:	Well GOLDEN EAGLE 21C-1-M
Company:	SRC ENERGY	TVD Reference:	RKB = 4' @ 4876.00usft (IKON 12)
Project:	WELD COUNTY (NAD83, TRUE NORTH)	MD Reference:	RKB = 4' @ 4876.00usft (IKON 12)
Site:	6N-66W-06 GOLDEN EAGLE 1-6 PAD	North Reference:	True
Well:	GOLDEN EAGLE 21C-1-M	Survey Calculation Method:	Minimum Curvature
Wellbore:	Wellbore #1		
Design:	Design #2		

Planned Survey									
Measured Depth (usft)	Inclination (°)	Azimuth (°)	Vertical Depth (usft)	+N/-S (usft)	+E/-W (usft)	Vertical Section (usft)	Dogleg Rate (°/100usft)	Build Rate (°/100usft)	Turn Rate (°/100usft)
15,100.00	90.40	269.51	7,272.74	-209.01	-6,965.52	6,968.65	0.00	0.00	0.00
15,200.00	90.40	269.51	7,272.04	-209.87	-7,065.51	7,068.63	0.00	0.00	0.00
15,205.02	90.40	269.51	7,272.00	-209.91	-7,070.53	7,073.65	0.00	0.00	0.00
Bottom of Production @ 15205.02ft									
15,300.00	90.40	269.51	7,271.34	-210.72	-7,165.50	7,168.60	0.00	0.00	0.00
15,305.02	90.40	269.51	7,271.30	-210.77	-7,170.53	7,173.62	0.00	0.00	0.00
TD Well @ 15305.02ft									

Casing Points					
Measured Depth (usft)	Vertical Depth (usft)	Name		Casing Diameter (")	Hole Diameter (")
1,816.58	1,800.00	9 5/8"		9-5/8	13-1/2
7,773.07	7,324.00	Production Zone Top		5-1/2	8-1/2

Plan Annotations				
Measured Depth (usft)	Vertical Depth (usft)	Local Coordinates		Comment
		+N/-S (usft)	+E/-W (usft)	
250.00	250.00	0.00	0.00	Begin Nudge @ 250.00ft
716.00	713.95	-4.71	37.52	Hold Tangent @ 716.00ft
6,665.99	6,585.39	-124.64	993.62	KOP @ 6665.99ft :: DLS = 9°/100'
7,773.07	7,324.00	-146.29	360.96	End Build @ 7773.07ft
15,205.02	7,272.00	-209.91	-7,070.53	Bottom of Production @ 15205.02ft
15,305.02	7,271.30	-210.77	-7,170.53	TD Well @ 15305.02ft