

T8N, R80W, 6th P.M.

SandRidge Exploration & Production, LLC

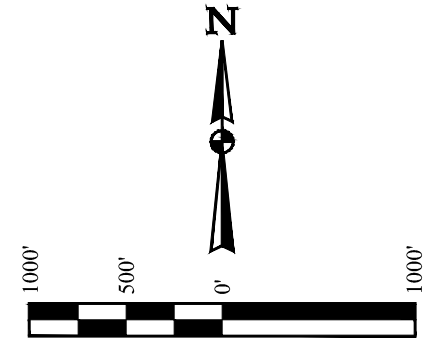
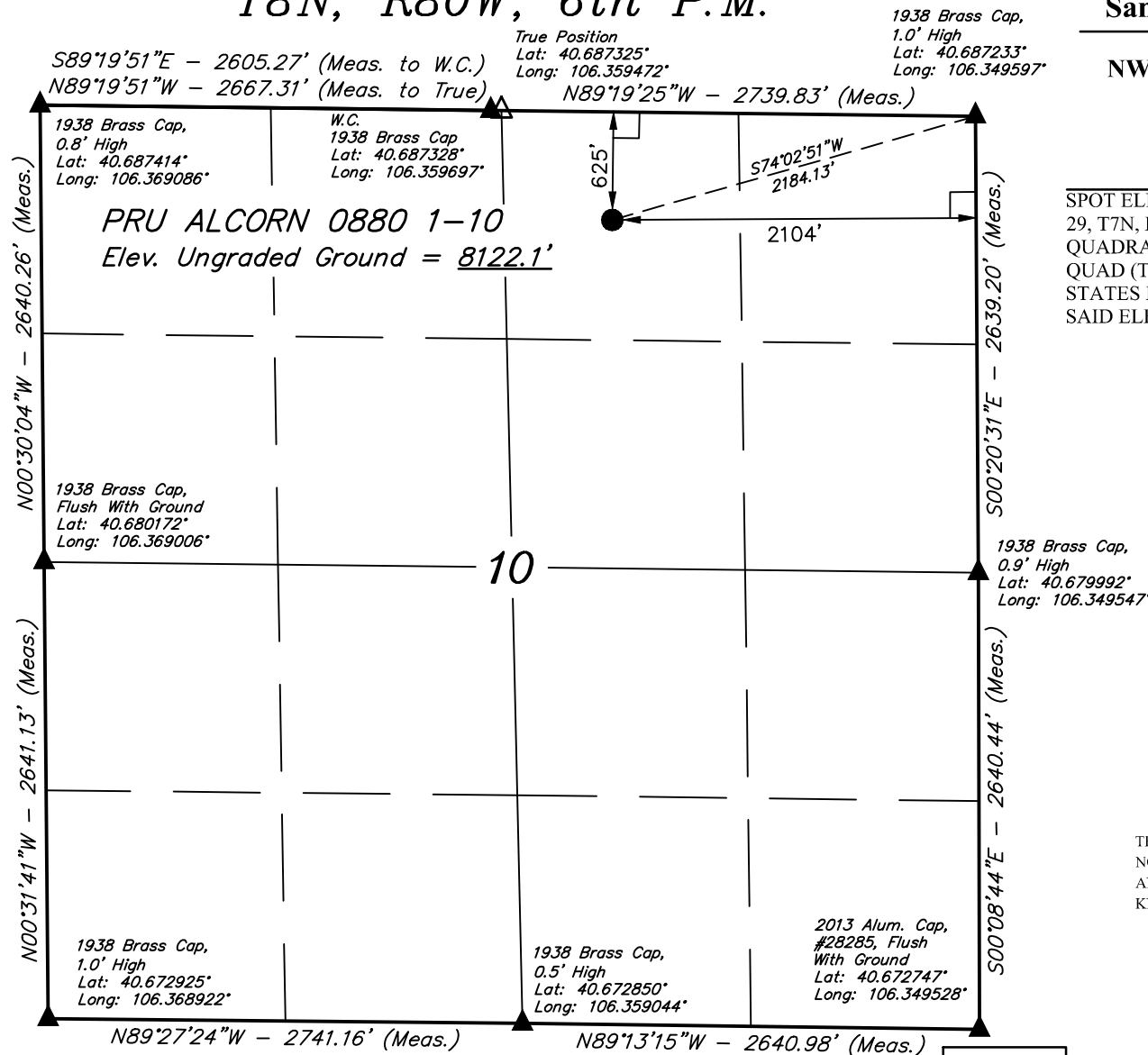
PRU ALCORN 0880 1-10
NW 1/4 NE 1/4, SECTION 10, T8N, R80W, 6th P.M.
JACKSON COUNTY, COLORADO

BASIS OF BEARINGS

BASIS OF BEARINGS IS A G.P.S. OBSERVATION

BASIS OF ELEVATION

SPOT ELEVATION AT THE SOUTHEAST CORNER OF SECTION 29, T7N, R80W, 6th P.M., TAKEN FROM THE COALMONT QUADRANGLE, COLORADO, JACKSON COUNTY, 7.5 MINUTE QUAD (TOPOGRAPHIC MAP) PUBLISHED BY THE UNITED STATES DEPARTMENT OF THE INTERIOR, GEOLOGICAL SURVEY. SAID ELEVATION IS MARKED AS BEING 8156 FEET.



CERTIFICATE

THIS IS TO CERTIFY THAT THE ABOVE PLAT WAS PREPARED FROM FIELD NOTES OF ACTUAL SURVEYS MADE BY ME OR UNDER MY SUPERVISION, AND THAT THE SAME ARE TRUE AND CORRECT TO THE BEST OF MY KNOWLEDGE AND BELIEF.



REGISTERED LAND SURVEYOR
 REGISTRATION NO. 28285
 STATE OF COLORADO

REV: 3 11-06-18 T.L.L. (WELL NAME CHANGE)

LEGEND:

- = 90° SYMBOL
- = PROPOSED WELLHEAD.
- = TARGET BOTTOM HOLE.
- ▲ = SECTION CORNERS LOCATED. (NAD 83)
- △ = SECTION CORNERS RE-ESTABLISHED. (Not Set on Ground.) (NAD 83)

NAD 83 (SURFACE LOCATION)	
LATITUDE =	40°41'08.12" (40.685589)
LONGITUDE =	106°21'25.81" (106.357169)
NAD 27 (SURFACE LOCATION)	
LATITUDE =	40°41'08.21" (40.685614)
LONGITUDE =	106°21'23.70" (106.356583)
STATE PLANE NAD 83 (CO. NORTH)	
N:	1493752.49 E: 2762279.10
STATE PLANE NAD 27 (CO. NORTH)	
N:	493750.57 E: 1762434.91



UELS, LLC
 Corporate Office * 85 South 200 East
 Vernal, UT 84078 * (435) 789-1017

SURVEYED BY	GREG WEIMER	09-14-17	SCALE
DRAWN BY	T.L.L.	09-27-17	1" = 1000'
WELL LOCATION PLAT			