

FINISHED GRADE ELEVATION = 5609.5'

- NOTES:
- ROUND CORNERS AT 35' RADIUS OR AS NEEDED.
 - CONSTRUCT DIVERSION DITCHES AS NEEDED.
 - CONTOURS SHOWN AT 2' INTERVALS.
 - CUT/FILL SLOPES 3:1 (TYP.).

APPROXIMATE SURFACE DISTURBANCE AREAS	
	ACRES
WELL SITE DISTURBANCE	±13
23' WIDE, 5821' LINEAR FOOT ACCESS ROAD DISTURBANCE	±4
TOTAL SURFACE USE AREA	±17



SCALE: 1" = 100'

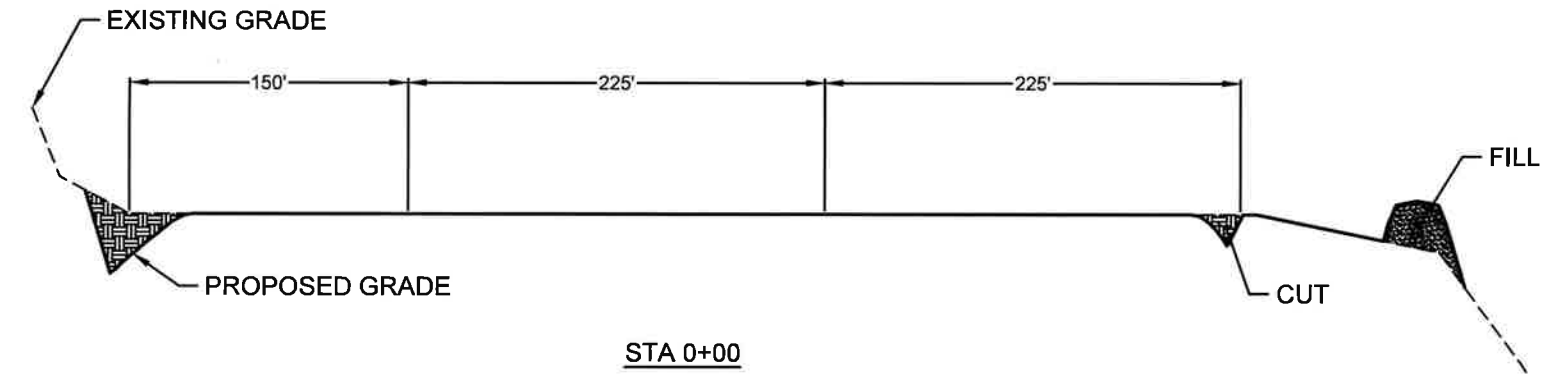
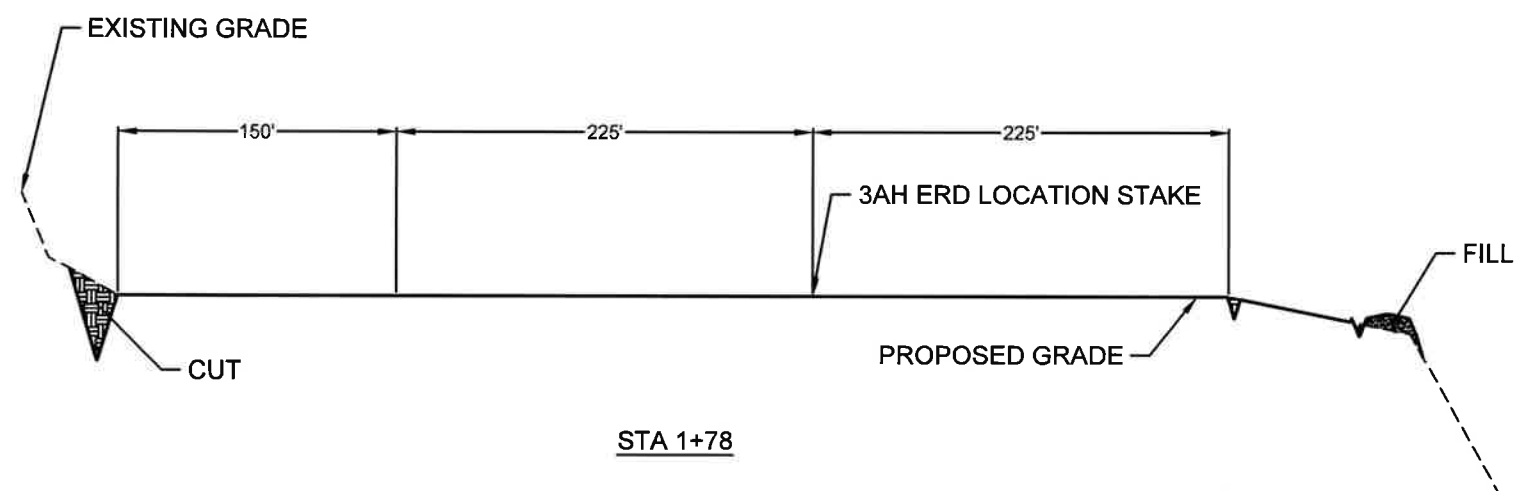
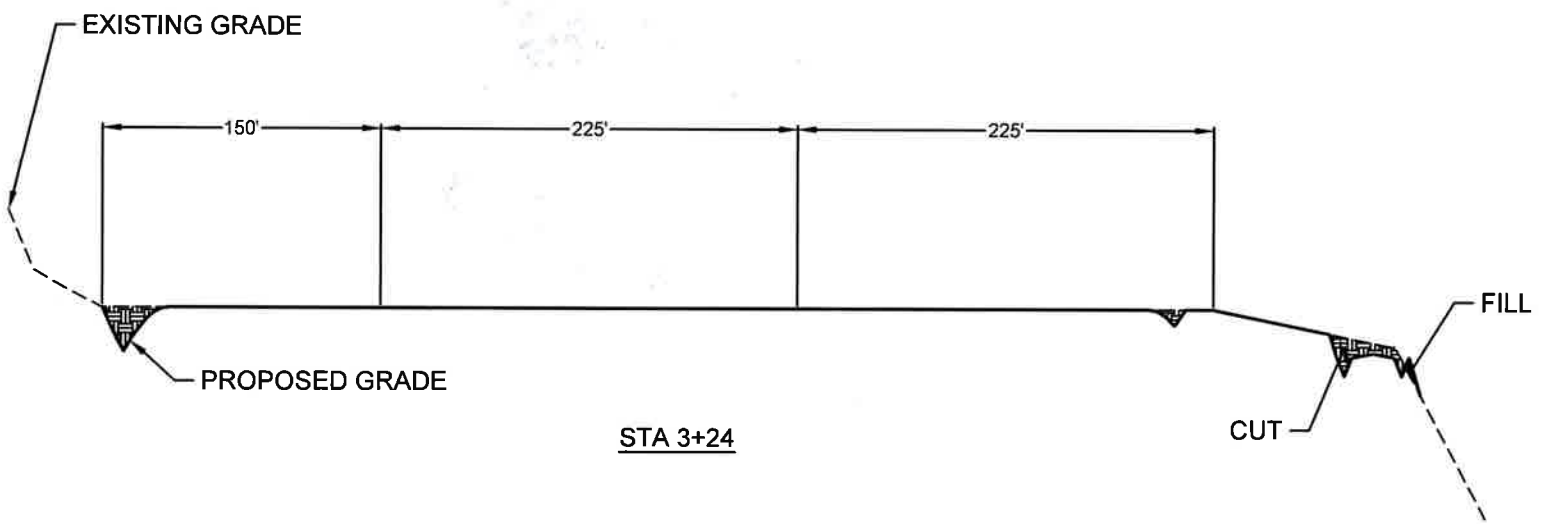
CONOCOPHILLIPS COMPANY
BIJOU 3-65 19-24 3AH ERD, 3BH, 3CH, 3DH, 4AH, 4BH, 4CH, 4DH
SECTION 21, T3S, R65W, 6TH P.M.
AURORA, ADAMS COUNTY, COLORADO

CONSTRUCTION LAYOUT - PHASE 1

DRAWN BY: KJD DATE DRAWN: 01/14/19

10333 E. Dry Creek Rd.
Suite 240
Englewood, CO 80112
Tel: (720) 482-9526
Fax: (720) 482-9546

FIGURE #1

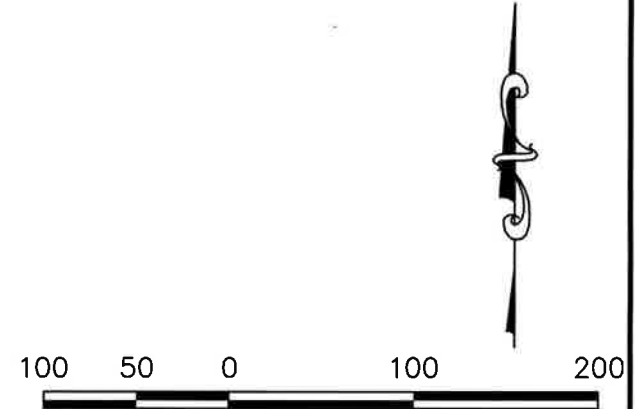


Melinda E. Luning

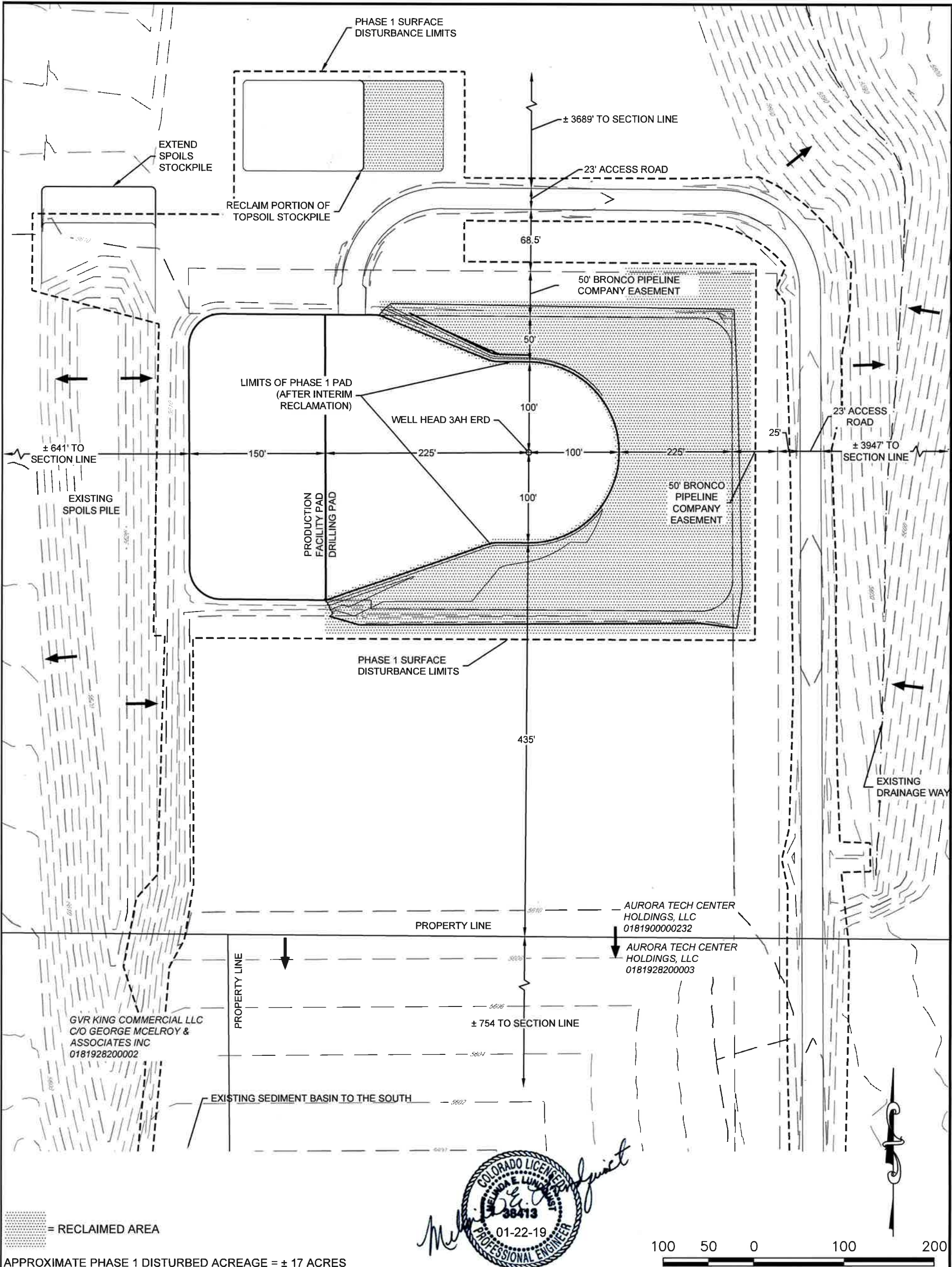
COLORADO LICENSED PROFESSIONAL ENGINEER
38413
01-22-19

APPROXIMATE EARTHWORK QUANTITIES	
TOPSOIL STRIPPING (6")	3,549 CU. YD.
REMAINING LOCATION	7,165 CU. YD.
TOTAL CUT	10,714 CU. YD.
FILL	3,538 CU. YD.
EXCESS MATERIAL	7,176 CU. YD.
TOPSOIL	3,549 CU. YD.
EXCESS UNBALANCE (AFTER RECLAMATION)	2,967 CU. YD.

- NOTES:
- FILL QUANTITY INCLUDES 10% FOR COMPACTION.
 - CALCULATIONS BASED ON 6" TOPSOIL STRIPPING.
 - CUT/FILL SLOPES 3:1 (TYP.).



SCALE: 1" = 100'



APPROXIMATE PHASE 1 DISTURBED ACREAGE = ± 17 ACRES
APPROXIMATE PHASE 1 RECLAIMED ACREAGE = ± 3 ACRES
APPROXIMATE PHASE 1 UN-RECLAIMED ACREAGE = ± 14 ACRES

CONOCOPHILLIPS COMPANY
BIJOU 3-65 19-24 3AH ERD, 3BH, 3CH, 3DH, 4AH, 4BH, 4CH, 4DH
SECTION 21, T3S, R65W, 6TH P.M.
AURORA, ADAMS COUNTY, COLORADO

CONSTRUCTION LAYOUT - PHASE 1 RECLAMATION

DRAWN BY: KJD

DATE DRAWN: 01/14/19



10333 E. Dry Creek Rd.
Suite 240
Englewood, CO 80112
Tel: (720) 482-9526
Fax: (720) 482-9546

FIGURE #3