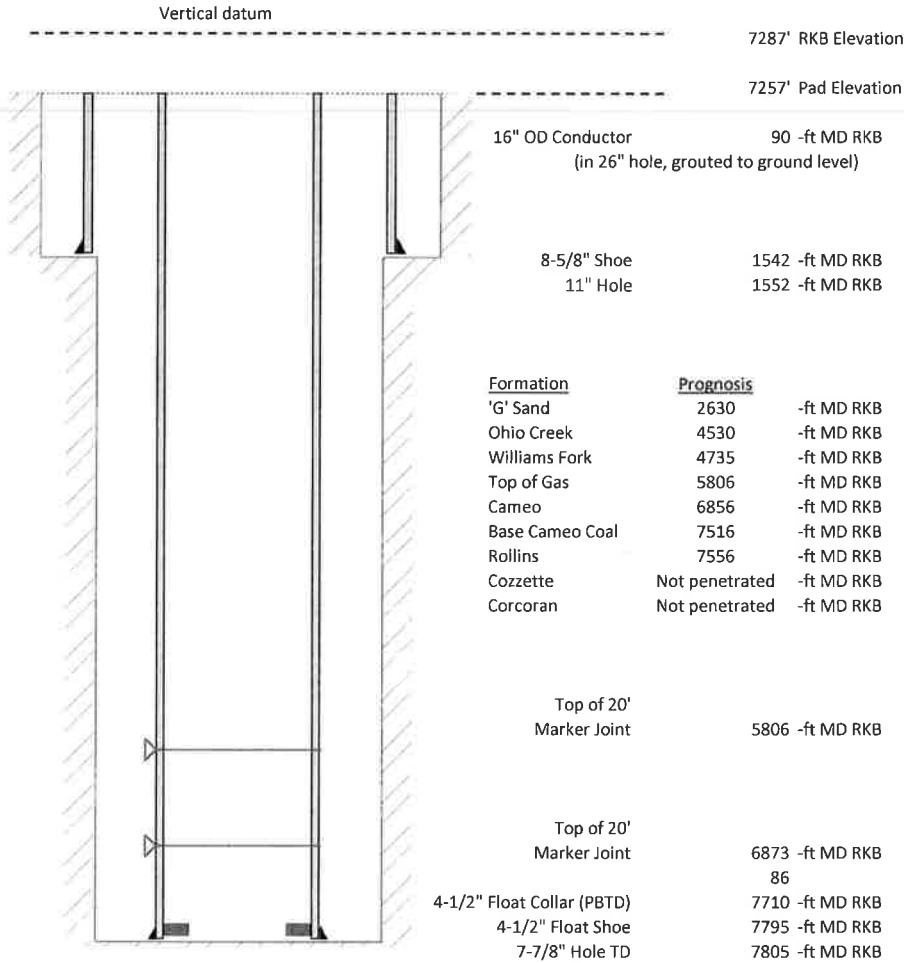


Laramie Energy, LLC
BCU 0993-21-02W
Slot B-2
H&P 522 (30-ft KB)

API # : 05-077-10523-00
 SW/4 NW/4 S13/T9S/R94W/6th PM
 Mesa County, CO
 Date of diagram : 10/22/2018



Cementing details

8-5/8" 24# Surface Csg	Lead	Tail
Density (ppg)	12.3	12.8
Volume (sx)	172	95
Yield (cf/sx)	2.45	2.18
Top (ft RKB)	0	650
Bottom (ft RKB)	650	1542
Returns (full or partial)	Full	Full

4-1/2" 11.6# Prod Csg	Lead	Tail
Density (ppg)	12.5	13.3
Volume (sx)	683	366
Yield (cf/sx)	1.94	1.73
Est Top (ft RKB)	700	5375
Est Bottom (ft RKB)	5375	7795
Returns (full or partial)	Full	Full

Displacement
8.3 ppg
119.5 bbls

Other Remarks : 23 bbls cement back on surface job. 20 bbls super flush back on production job.