



---

November 14, 2018

Ms. Julie Murphy, Director  
Colorado Oil & Gas Conservation Commission  
1120 Lincoln Street, Ste. 801  
Denver, Colorado 80203

RE: Rule 318.A.e.

GP-J Evans FED 20W-20-16N, GP-J Evans FED 20W-20-17N  
**NENE Section 20, Township 5N, Range 65W, Weld County, CO**

Dear Ms. Murphy,

Extraction Oil and Gas, Inc. (Extraction) is planning to drill the captioned horizontal wells in accordance with the provision of COGCC Rule 318A.e.

The wellbore spacing unit will be 360 acres, comprised of Section 24: N/2NE/4, Township 5 North, Range 66 West, Section 19: N/2/N2, Section 20: N/2NW/4, NWNE Township 5 North, Range 65 West 6<sup>th</sup> P.M. The subject wells are planned to drill and test the viability of the Niobrara formation. The wellbore spacing unit is depicted on the enclosed spacing unit exhibit.

Extraction hereby certifies to the Director that all Owners within the proposed spacing unit above were notified and 30 days have passed without objection.

Sincerely,

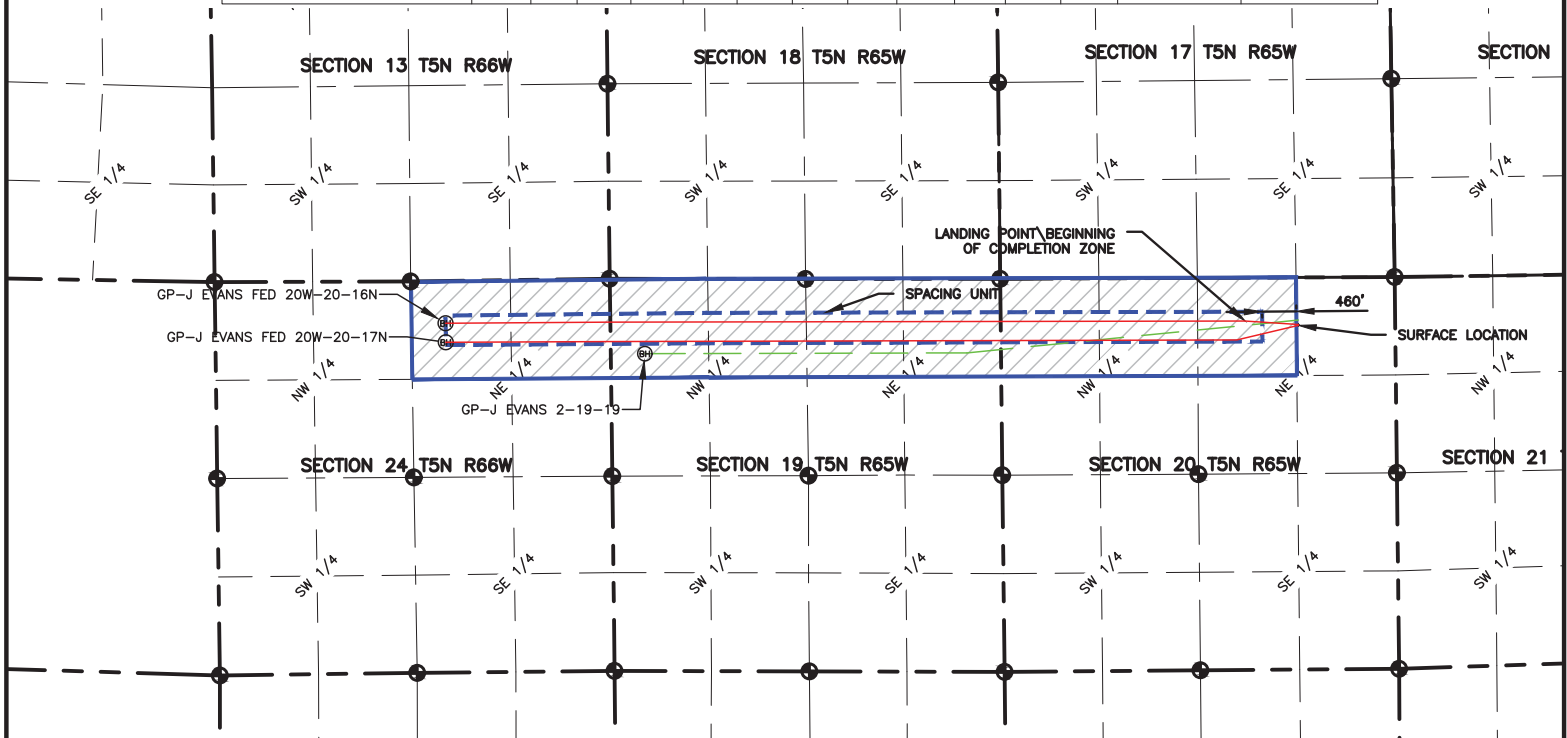
Bonnie Lamond  
Extraction Oil & Gas, Inc.

NAME: J EVANS  
 SPACING UNIT: SEC 24: N/2NE/4, T5N, 66W; SEC 19: N/2N/2; SEC 20: N/2NW/4, NW/4NE/4, T5N, 65W, UNIT ACREAGE: 360

WELL NAME	SURFACE LOCATION				LANDING POINT\BEGIN HORIZONTAL COMPLETION ZONE				BOTTOM HOLE\END HORIZONTAL COMPLETION ZONE				COMPLETION ZONE BEARING	COMPLETION ZONE LENGTH
	DIST.	DIR.	DIST.	DIR.	DIST.	DIR.	DIST.	DIR.	DIST.	DIR.	DIST.	DIR.		
GP J EVANS FED 20W-20-16N	634'	FNL	1305'	FEL	583'	FNL	2023'	FEL	570'	FNL	2222'	FEL	S89°36'32"W S89°53'55"W	2221.84' 8534.59'
GP J EVANS FED 20W-20-17N	646'	FNL	1305'	FEL	837'	FNL	2137'	FEL	826'	FNL	2221'	FEL	S89°44'05"W S89°51'39"W	2221.16' 8442.61'



0 2000  
 SCALE: 1"= 2000'  
 U.S. SURVEY FEET



**LAMP RYNEARSON**  
 & ASSOCIATES

4715 Innovation Drive 970.226.0342 | P  
 Fort Collins, CO 80525 970.226.0879 | F  
 www.LRA-Inc.com

PLANNED SPACING UNIT EXHIBIT  
 GREELEY DIRECTIONAL  
 J EVANS SPACING UNIT

LEGEND	
ALLOT CORNER	COMPUTED ALLOT CORNER FROM MONUMENT RECORDS
BOTTOM HOLE	COMPUTED FROM GLO RECORDS
COMPUTED ALLOT CORNER	EXISTING WELL
SECTION LINE	
QUARTER SECTION LINE	
SIXTEENTH LINE	

DRAWN BY  
 JMC

DATE  
 4/9/2018

COGOC ID  
 332837

PROJECT - TASK NUMBER  
 0213001.01

BOOK AND PAGE  
 MR01/MR02

SURFACE - LOCATION  
 NE/4,NE/4, SEC20, T5N, R65W

PATH\FILENAME

Engineering\0218001.01 XOC - Greeley Directional GP  
 GP\SURFACE DRAWINGS\EXHIBITS\Planned Spacing Unit\0213001\_01R65W\_8.dwg