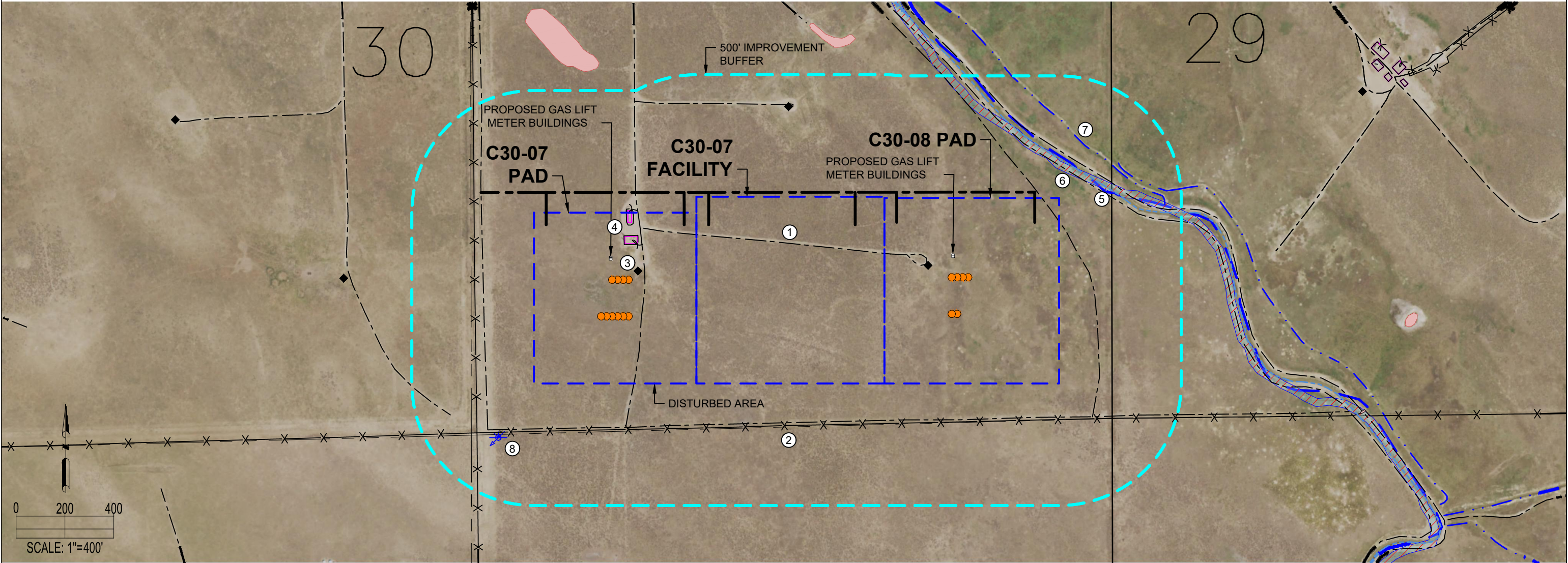


C30-07 PAD, C30-07 FACILITY, C30-08 PAD
LOCATION DRAWING



C30-07 PAD & C30-07 FACILITY & C30-08 PAD

IMPROVEMENTS: (AS MEASURED FROM THE PROPOSED EDGE OF DISTURBANCE)	
1. PRIVATE ROAD:	0', 0', 0', ±114' NE, ±138' S, ±166' NE, ±196' W, ±366' SW, ±377' N
2. FENCE:	0', 0', ±147' S, ±236' W, ±369' N
3. OIL/GAS WELL:	0', 0', ±369' N
4. EXISTING PRODUCTION EQUIPMENT:	0', 0'
5. NERES CANAL:	±139' NE (ACTUAL), ±137' NE (MAPPED)
6. WETLAND:	±107' NE
7. DITCH:	±236' NE, ±281' NE
8. WATER WELL:	±266' SW
PROPERTY LINE:	±149' S, ±215' E, ±257' W

DISCLAIMER:
THIS PLOT DOES NOT REPRESENT A MONUMENTED LAND SURVEY AND SHOULD NOT BE RELIED UPON TO DETERMINE BOUNDARY LINES, PROPERTY OWNERSHIP OR OTHER PROPERTY INTERESTS. PARCEL LINES, IF DEPICTED HAVE NOT BEEN FIELD VERIFIED AND MAY BE BASED UPON PUBLICLY AVAILABLE DATA THAT ALSO HAS NOT BEEN INDEPENDENTLY VERIFIED.

CURRENT SURFACE USE: RANGELAND
FUTURE SURFACE USE: RANGELAND



FIELD DATE: 09-15-18
DRAWING DATE: 10-19-18
DRAWN BY: SJH
CHECKED BY: RMC

SITE NAME:
C30-07 PAD, C30-07 FACILITY, C30-08 PAD
SURFACE LOCATION:
SEC. 30, T4N, R64W, 6TH P.M.
WELD COUNTY, COLORADO

DATA SOURCE:
AERIAL IMAGERY: NAIP 2017
WATER WELLS: COLORADO DWR
NHD: USGS
PUBLICLY AVAILABLE DATA SOURCES HAVE NOT BEEN INDEPENDENTLY VERIFIED BY ASCENT.

LEGEND:
● = PROPOSED WELL
★ = WATER WELL
◆ = EXISTING WELL
— = SECTION LINE
- - - = CENTER SECTION LINE
— = CANAL (MAPPED)
- - - = CANAL (ACTUAL)
- - - = PROPOSED ACCESS ROAD
= LOW LYING AREA
= DITCH
X X = FENCE
- - - = EXISTING ROAD
= WETLAND
= DISTURBANCE AREA
= 500' RADIUS
= EXISTING FACILITY



EXHIBIT M

Mustang CDP Econode multi-well facility capable of handling up to 32 wells

