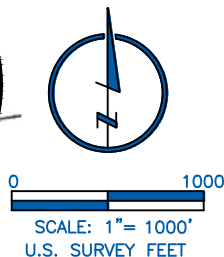
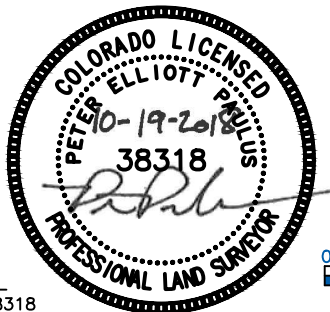


LAND SURVEYOR'S CERTIFICATION

LAMP, RYNEARSON & ASSOCIATES, INC., OF FT. COLLINS, COLORADO HAS, IN ACCORDANCE WITH A REQUEST FROM RYAN BRUNER, AXIS EXPLORATION, DETERMINED THE SURFACE LOCATION OF THE WELL DESIGNATED AS JAMASO 4-65 5-6-9 TO BE 2450' FROM THE NORTH LINE AND 1188' FROM THE WEST LINE OF SECTION 4, TOWNSHIP 4 SOUTH, RANGE 65 WEST OF THE 6TH P.M., ARAPAHOE COUNTY, COLORADO.



PETER ELLIOTT PAULUS COLORADO PLS 38318
DATE OF SURVEY: 01/09/2018 (SECTION CONTROL)
DATE OF SURVEY: 10/12/2018 (WELL LOCATION)

NOTES:

1. DISTANCES ARE MEASURED PERPENDICULAR TO NEAREST SECTION LINE AND ARE SHOWN ON THE SAME SIDE OF THE SECTION LINE WHERE THE WELL IS LOCATED.
2. THIS MAP DOES NOT REPRESENT A MONUMENTED BOUNDARY SURVEY. SIXTEENTH CORNER LOCATIONS ARE COMPUTED, UNLESS OTHERWISE NOTED.
3. BOTTOM HOLE LOCATIONS AND HORIZONTAL COMPLETION ZONE PROVIDED BY OTHERS.
4. ALL REBAR AND CAPS ARE MEASURED IN INCHES

BASIS OF BEARING:

THE WEST LINE OF THE SOUTHWEST QUARTER OF SECTION 4-T4S-R65W BEARS N00°22'38"W FOR 2647.43 FT BETWEEN THE SOUTHWEST CORNER OF SECTION 4 MONUMENTED WITH 2 1/2" A.C. IN R.B. STAMPED "PLS 29430" AND THE WEST QUARTER CORNER OF SECTION 4 MONUMENTED WITH 3 1/4" A.C. IN R.B. STAMPED "LS 34178" BASED ON THE COLORADO CENTRAL 0502 STATE PLANE COORDINATE SYSTEM

ELEVATIONS ARE BASED ON NAVD 88, AS OBSERVED FROM GPS OBSERVATIONS



LAMP RYNEARSON
& ASSOCIATES

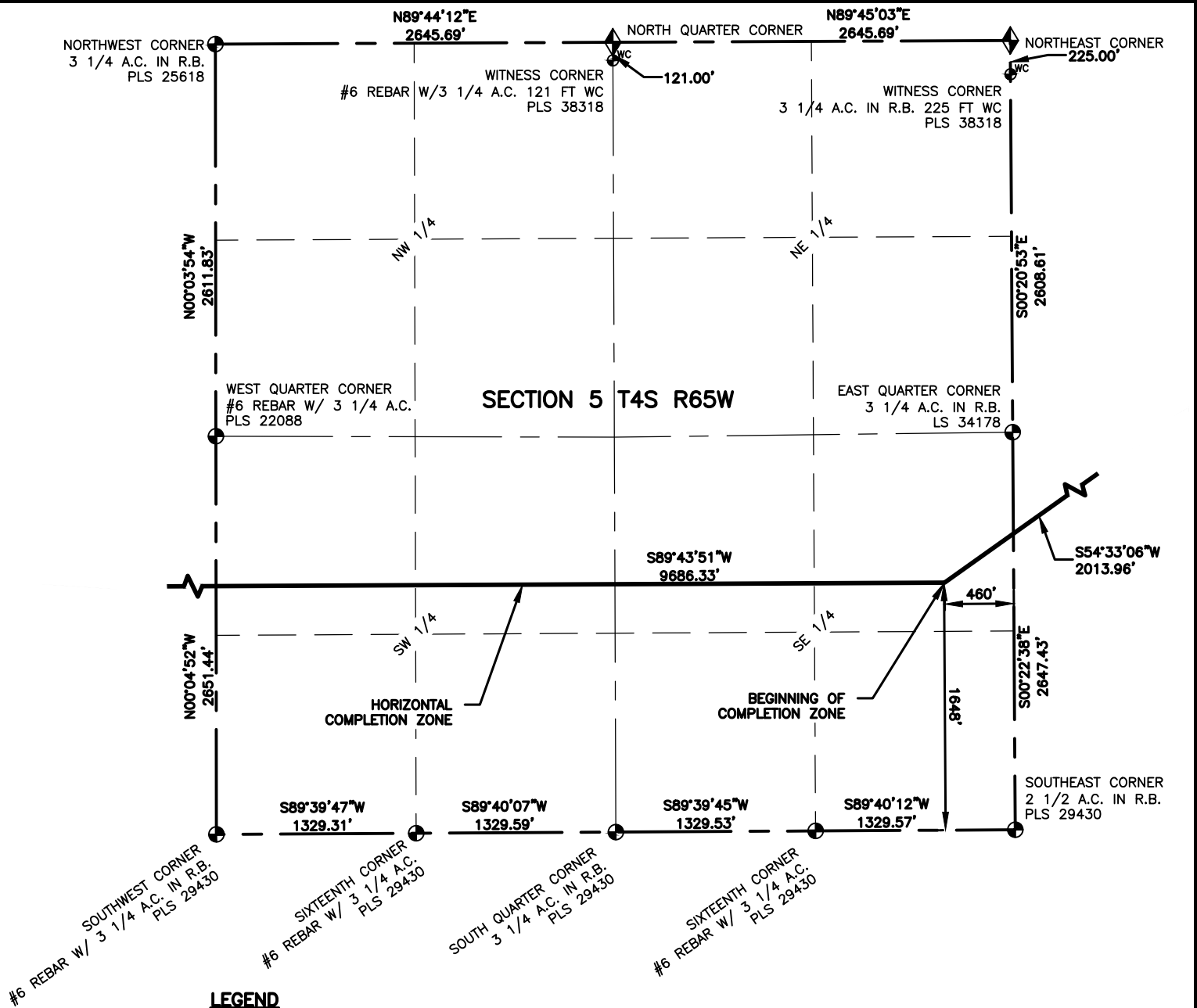
4715 Innovation Drive 970.226.0342 | P
Fort Collins, CO 80525 970.226.0879 | F
www.LRA-Inc.com

PROPOSED WELL LOCATION EXHIBIT
JAMASO 4-65 5-6-9
1 OF 3

DRAWN BY	DATE	COGCC ID	PROJECT - TASK NUMBER	BOOK AND PAGE
CPP	10/12/18		0218003.03	

SURFACE - LOCATION
SW/4 NW/4 SEC 4 T4S R65W,
CITY OF AURORA

PATH\FILENAME L:\Engineering\0218003.03 XOG - Jamaso\SURVEY\DRAWINGS\EXHIBITS\0218003.03 WP-11.dwg



NOTES:

- DISTANCES ARE MEASURED PERPENDICULAR TO NEAREST SECTION LINE AND ARE SHOWN ON THE SAME SIDE OF THE SECTION LINE WHERE THE WELL IS LOCATED.
- THIS MAP DOES NOT REPRESENT A MONUMENTED BOUNDARY SURVEY. SIXTEENTH CORNER LOCATIONS ARE COMPUTED, UNLESS OTHERWISE NOTED.
- BOTTOM HOLE LOCATIONS AND HORIZONTAL COMPLETION ZONE PROVIDED BY OTHERS.
- ALL REBAR AND CAPS ARE MEASURED IN INCHES.



0 1000
SCALE: 1"= 1000'
U.S. SURVEY FEET



LAMP RYNEARSON
& ASSOCIATES

4715 Innovation Drive 970.226.0342 | P
Fort Collins, CO 80525 970.226.0879 | F
www.LRA-inc.com

PROPOSED WELL LOCATION EXHIBIT
JAMASO 4-65 5-6-9
2 OF 3

DRAWN BY

CPP

DATE

10/12/18

COGCC ID

0218003.03

PROJECT - TASK NUMBER

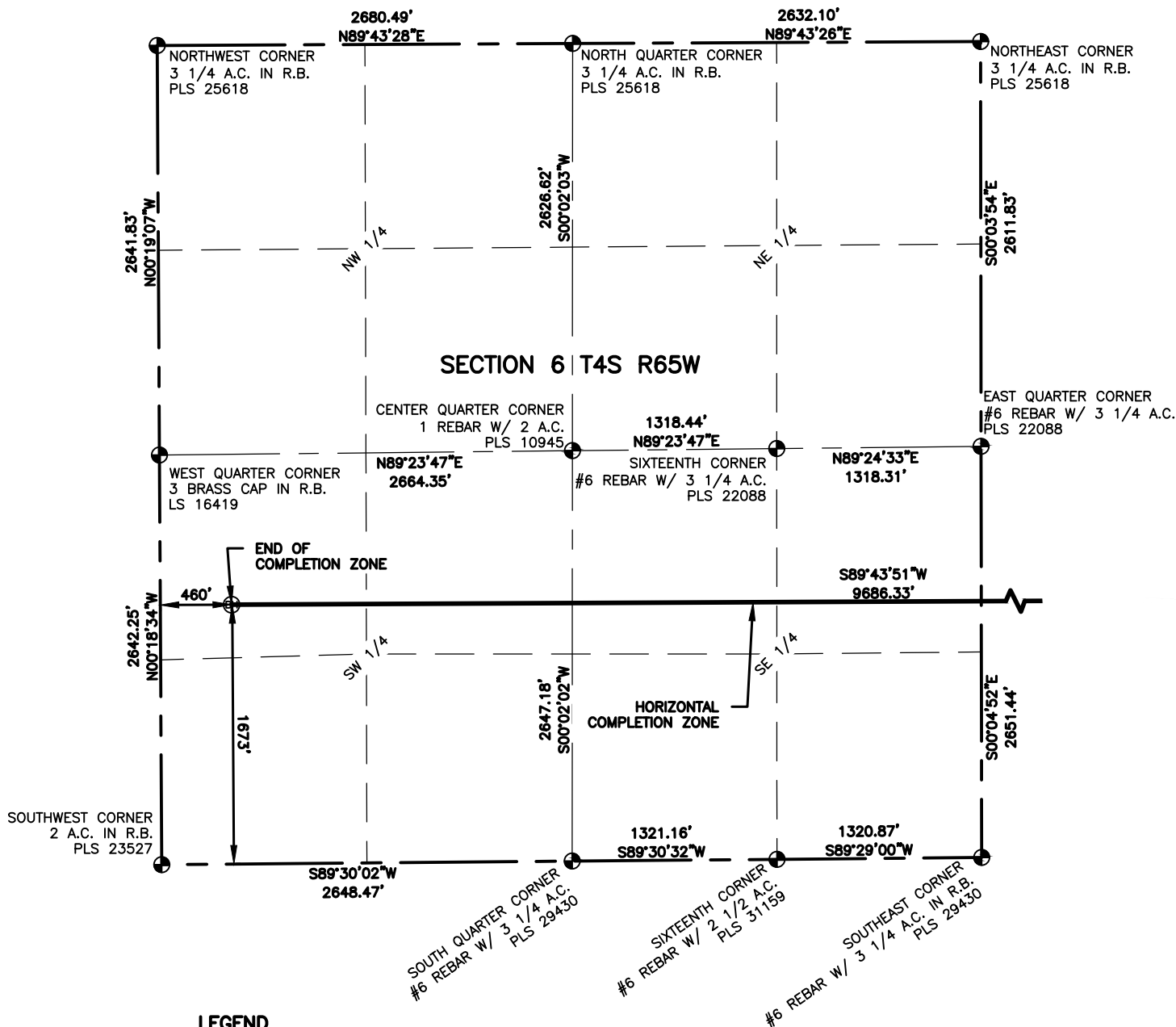
0218003.03

BOOK AND PAGE

SURFACE - LOCATION

SW/4 NW/4 SEC 4 T4S R65W,
CITY OF AURORA

PATH/FILENAME L:\Engineering\0218003.03 XOG - Jamaso\SURVEY\DRAWINGS\EXHIBITS\0218003.03 WP-12.dwg



LEGEND

- ALIQUOT CORNER
- ◆ COMPUTED ALIQUOT CORNER
- ⊙ BOTTOM HOLE
- ⊙ PROPOSED WELL
- A.C. ALUMINUM CAP
- R.B. RANGE BOX
- CON. CONCRETE

NOTES:

- DISTANCES ARE MEASURED PERPENDICULAR TO NEAREST SECTION LINE AND ARE SHOWN ON THE SAME SIDE OF THE SECTION LINE WHERE THE WELL IS LOCATED.
- THIS MAP DOES NOT REPRESENT A MONUMENTED BOUNDARY SURVEY. SIXTEENTH CORNER LOCATIONS ARE COMPUTED, UNLESS OTHERWISE NOTED.
- BOTTOM HOLE LOCATIONS AND HORIZONTAL COMPLETION ZONE PROVIDED BY OTHERS.
- ALL REBAR AND CAPS ARE MEASURED IN INCHES.



0 1000
SCALE: 1"= 1000'
U.S. SURVEY FEET



LAMP RYNEARSON
& ASSOCIATES

4715 Innovation Drive 970.226.0342 | P
Fort Collins, CO 80525 970.226.0879 | F
www.LRA-inc.com

PROPOSED WELL LOCATION EXHIBIT
JAMASO 4-65 5-6-9
3 OF 3

DRAWN BY	DATE	COGCC ID	PROJECT - TASK NUMBER	BOOK AND PAGE
CPP	10/12/18		0218003.03	

SURFACE - LOCATION
SW/4 NW/4 SEC 4 T4S R65W,
CITY OF AURORA