

In accordance with a request from Kit Tinchler of Nickel Road Operating LLC, Washburn Land Surveying, LLC has determined the location of the **ELDER 1X-HNC-09-07-65** well site to be SHL: 2458' FSL and 324' FWL, (LPL: 480' FNL and 460' FEL, BHL: 480' FNL and 460' FWL), as measured at ninety (90) degrees from the section lines of Sections 9, 10 and 11, Township 7 North, Range 65 West of the 6th Principal Meridian, Weld County Colorado.

#### LEGEND

- ⊕ - Found Survey Monument
- ⊙ - Calculated Location
- ⊙ - Surface Hole Location (SHL)
- - Landing Point Location (LPL)
- ✕ - Bottom Hole Location (BHL)

Proposed Surface Hole Data:	Proposed Landing Point Data:	Proposed Bottom Hole Data:
Latitude: N 40.587674°	Latitude: N 40.594211°	Latitude: N 40.595025°
Longitude: W 104.638151°	Longitude: W 104.641002°	Longitude: W 104.675645°
PDOP: 1.5		

#### Notes:

- Bearings and distances based on NAD 83 Colorado North State Plane Coordinate, using RTK GPS observations taken 1/25/2018 by operator Jason Dahlman.
- Conversion factor to ground (1.0002578582).
- Elevations based on NAVD 88 GPS heights and Geoid 2009 corrections.
- See Location Drawing for visible improvements within 500 feet of Pad Site.
- The surface use is an uncultivated field.

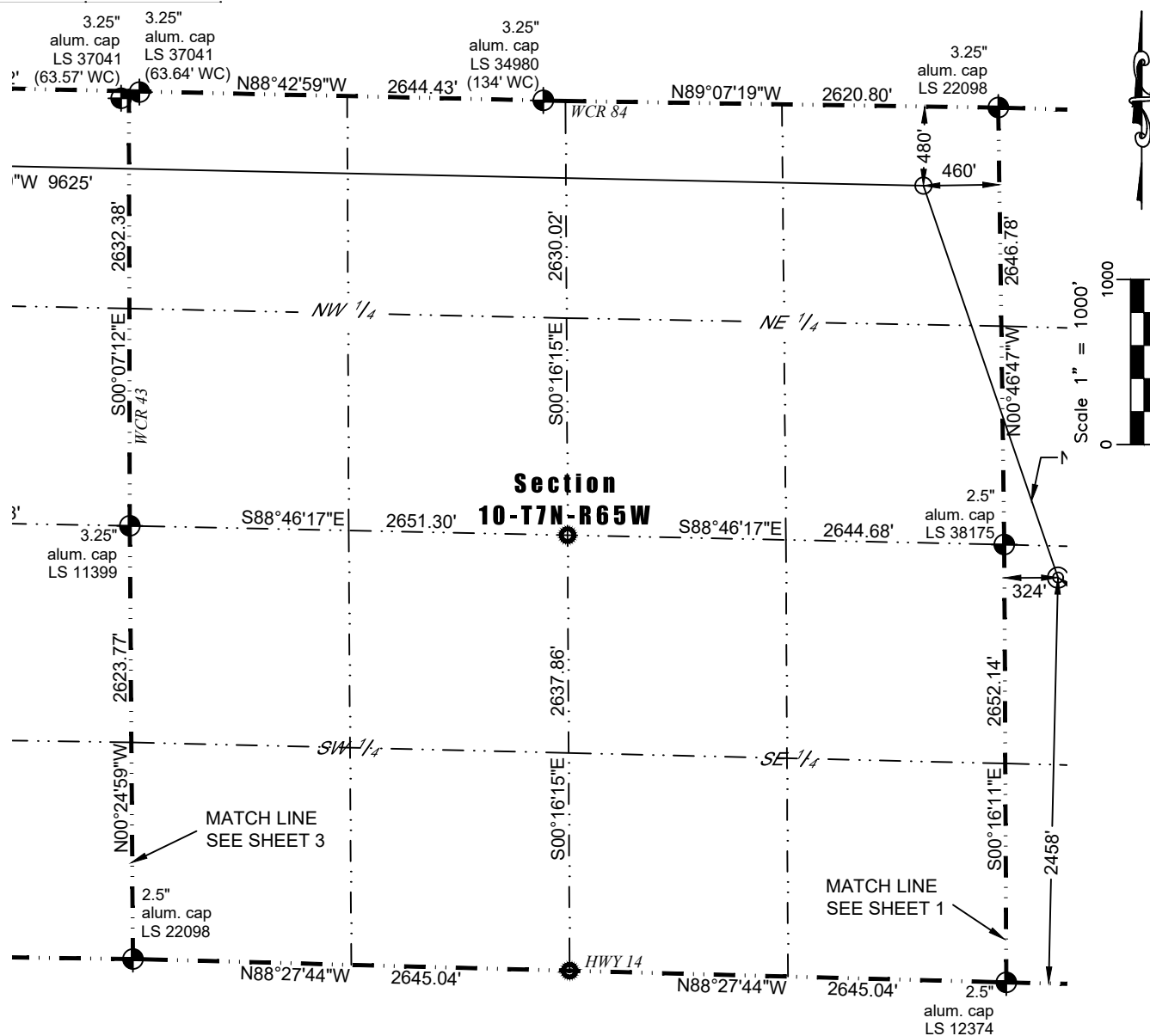
**NOTICE:** According to Colorado law you must commence any legal action based upon any defect in this W.L.C. within three years after you first discover such defect. In no event may any action based upon any defect in this W.L.C. be commenced more than ten years from this said date of the certification shown hereon.

I hereby certify that this Well Location Certificate was prepared by me or under my direct supervision on 2/14/2018 for and on behalf of Nickel Road Operating LLC. That it is not a Land Survey Plat or an Improvement Survey Plat and that it is not to be relied upon for establishment of fences, buildings, or other future improvement lines.

John Robert McGehee LS#38219  
Well: ELDER 1X-HNC-09-07-65



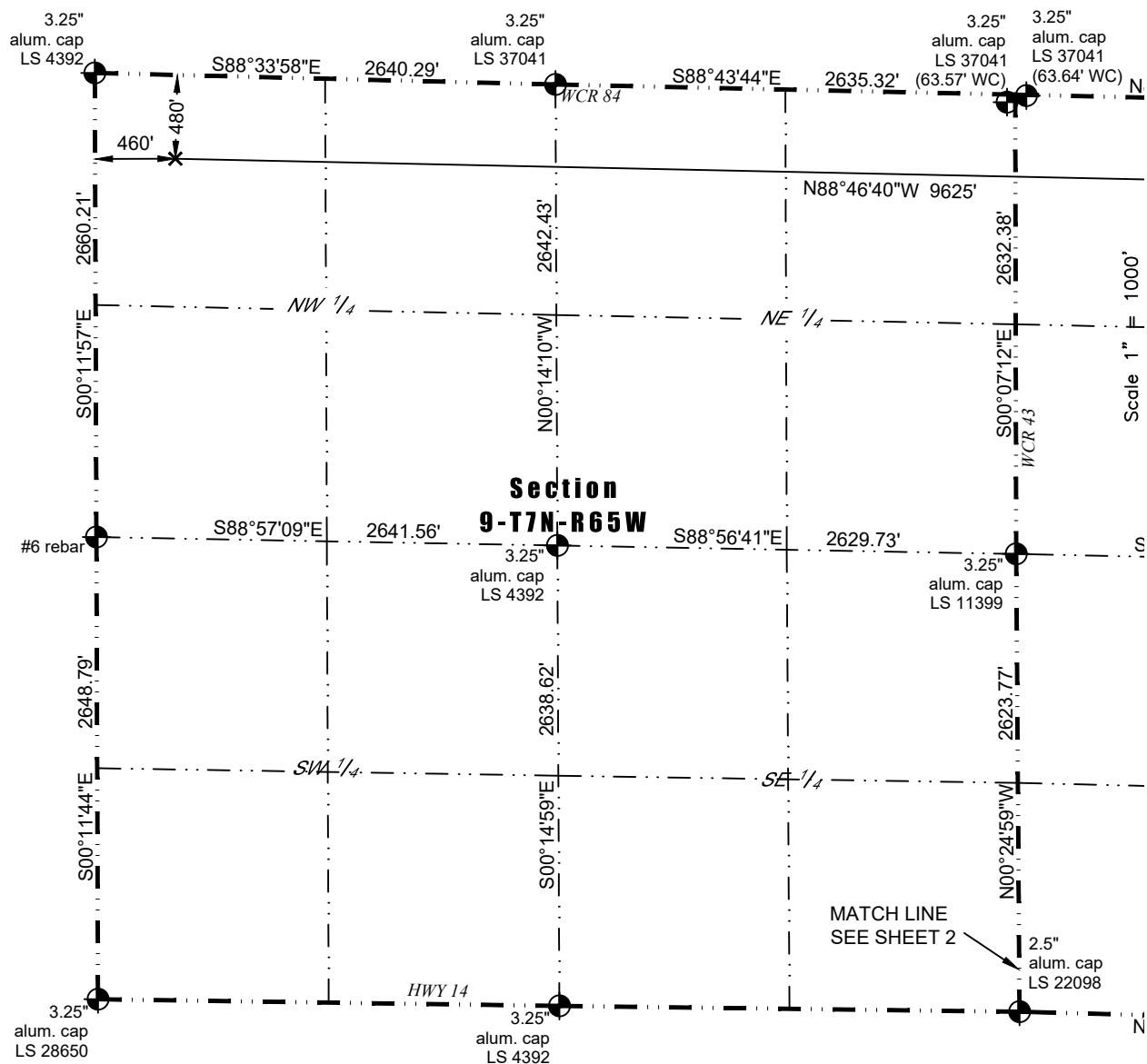
Washburn Land Surveying  
www.WashburnSurveying.com  
970-232-9645



### LEGEND

- ⊕ - Found Survey Monument
- ⦿ - Calculated Location
- ⊙ - Surface Hole Location (SHL)
- - Landing Point Location (LPL)
- ✕ - Bottom Hole Location (BHL)

**NOTICE:** According to Colorado law you must commence any legal action based upon any defect in this W.L.C. within three years after you first discover such defect. In no event may any action based upon any defect in this W.L.C. be commenced more than ten years from this said date of the certification shown hereon.



## LEGEND

- ⊕ - Found Survey Monument
- ⦿ - Calculated Location
- ⊙ - Surface Hole Location (SHL)
- - Landing Point Location (LPL)
- × - Bottom Hole Location (BHL)

**NOTICE:** According to Colorado law you must commence any legal action based upon any defect in this W.L.C. within three years after you first discover such defect. In no event may any action based upon any defect in this W.L.C. be commenced more than ten years from this said date of the certification shown hereon.