

SRC ENERGY

Location: COLORADO Slot: SLOT#13 SEELEY FEDERAL 40C-30-L (1953'FNL & 1594'FEL, SEC.26)
Field: WELD COUNTY (NAD83, TRUE NORTH) Well: SEELEY FEDERAL 40C-30-L
Facility: SEC 26-T06N-R66W Wellbore: SEELEY FEDERAL 40C-30-L PWB

Plot reference wellpath is SEELEY FEDERAL 40C-30-L (REV-A-I) PWP	Grid System: NAD83 / Lambert Colorado SP, Northern Zone (501), US feet
True vertical depths are referenced to PROPETRO 12 (4') (RKB)	* = Wellpath was transformed from a different geodetic datum
Measured depths are referenced to PROPETRO 12 (4') (RKB)	North Reference: True north
PROPETRO 12 (4') (RKB) to Mean Sea Level: 4701 feet	Scale: True distance
Mean Sea Level to Mud line (At Slot: SLOT#13 SEELEY FEDERAL 40C-30-L (1953'FNL & 1594'FEL, SEC.26)): 0 feet	Depths are in feet
Coordinates are in feet referenced to Slot	Created by: doddanna on 2018-05-10
	Database: WellArchitectDB

Location Information

Facility Name			Grid East (US ft)	Grid North (US ft)	Latitude	Longitude
SEC 26-T06N-R66W			3211308.457	1412009.161	40°27'42.779"N	104°44'26.117"W
Slot	Local N (ft)	Local E (ft)	Grid East (US ft)	Grid North (US ft)	Latitude	Longitude
SLOT#13 SEELEY FEDERAL 40C-30-L (1953'FNL & 1594'FEL, SEC.26)	-240.12	-1.95	3211308.565	1411769.037	40°27'42.496"N	104°44'26.142"W
PROPETRO 12 (4') (RKB) to Mud line (At Slot: SLOT#13 SEELEY FEDERAL 40C-30-L (1953'FNL & 1594'FEL, SEC.26))					4701 ft	
Mean Sea Level to Mud line (At Slot: SLOT#13 SEELEY FEDERAL 40C-30-L (1953'FNL & 1594'FEL, SEC.26))					0 ft	
PROPETRO 12 (4') (RKB) to Mean Sea Level					4701 ft	

Survey Program

Start MD (ft)	End MD (ft)	Tool	Model	Log Name/Comment	Wellbore
4.00	1750.00	BHI NavTrak	BHI NavTrak (Rotating+Axial Corr)		SEELEY FEDERAL 40C-30-L PWB
1750.00	17922.28	BHI AutoTrak Curve	BHI AutoTrak Curve (IFR1, Short)		SEELEY FEDERAL 40C-30-L PWB

Well Profile Data

Design Comment	MD (ft)	Inc (°)	Az (°)	TVD (ft)	Local N (ft)	Local E (ft)	DLS (°/100ft)	VS (ft)
Tie On	4.00	0.000	106.251	4.00	0.00	0.00	0.00	0.00
End of Tangent	300.00	0.000	106.251	300.00	0.00	0.00	0.00	0.00
End of Build (XS)	846.44	10.929	106.251	843.13	-14.54	49.88	2.00	50.32
End of Tangent (XS)	6739.28	10.929	106.251	6629.10	-327.19	1122.45	0.00	1132.38
End of 3D Arc (XS)	7624.39	90.156	90.168	7149.00	-356.93	1750.06	9.00	1760.62
End of Tangent (XS)	17922.28	90.156	90.168	7121.00	-387.20	12047.87	0.00	12054.09

Targets

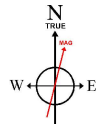
Name	MD (ft)	Inc (°)	Az (°)	TVD (ft)	Local N (ft)	Local E (ft)	DLS (°/100ft)	VS (ft)
15.5in Open Hole	4.00	0.00	106.251	4.00	0.00	0.00	0.00	0.00
9.5in Casing Surface	4.00	0.00	106.251	4.00	0.00	0.00	0.00	0.00
8.5in Open Hole	1750.00	10.929	106.251	6629.10	-327.19	1122.45	0.00	1132.38
15.5in Open Hole	1750.00	10.929	106.251	6629.10	-327.19	1122.45	0.00	1132.38
9.5in Casing Surface	1750.00	10.929	106.251	6629.10	-327.19	1122.45	0.00	1132.38
8.5in Open Hole	17922.28	90.156	90.168	7149.00	-356.93	1750.06	9.00	1760.62
15.5in Open Hole	17922.28	90.156	90.168	7149.00	-356.93	1750.06	9.00	1760.62
9.5in Casing Surface	17922.28	90.156	90.168	7149.00	-356.93	1750.06	9.00	1760.62
8.5in Open Hole	12054.09	0.00	106.251	7121.00	-387.20	12047.87	0.00	12054.09

Hole and Casing Sections

Name	Start MD (ft)	End MD (ft)	Interval (ft)	Start Local N (ft)	End Local N (ft)	Start Local E (ft)	End Local E (ft)	Wellbore
15.5in Open Hole	4.00	1750.00	1746.00	-327.19	-327.19	-387.20	-387.20	SEELEY FEDERAL 40C-30-L PWB
9.5in Casing Surface	4.00	1750.00	1746.00	-327.19	-327.19	-387.20	-387.20	SEELEY FEDERAL 40C-30-L PWB
8.5in Open Hole	1750.00	17922.28	16172.28	-327.19	-387.20	-387.20	-387.20	SEELEY FEDERAL 40C-30-L PWB



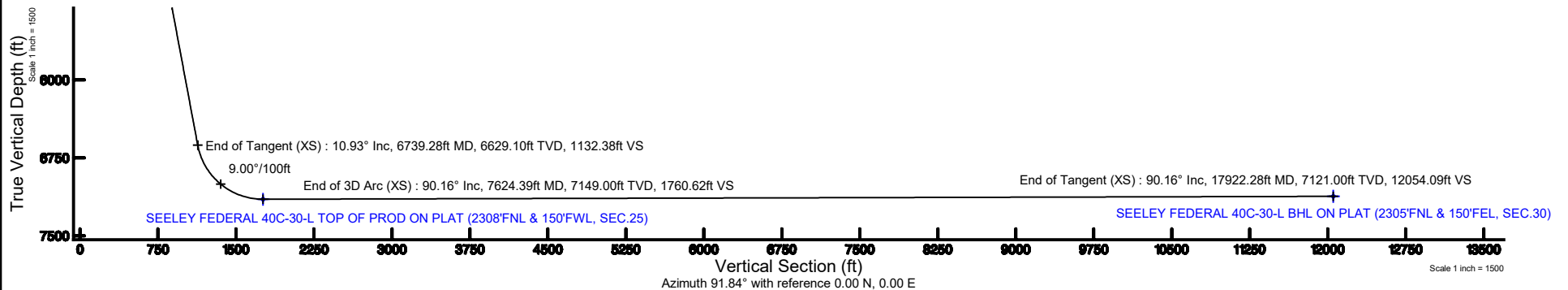
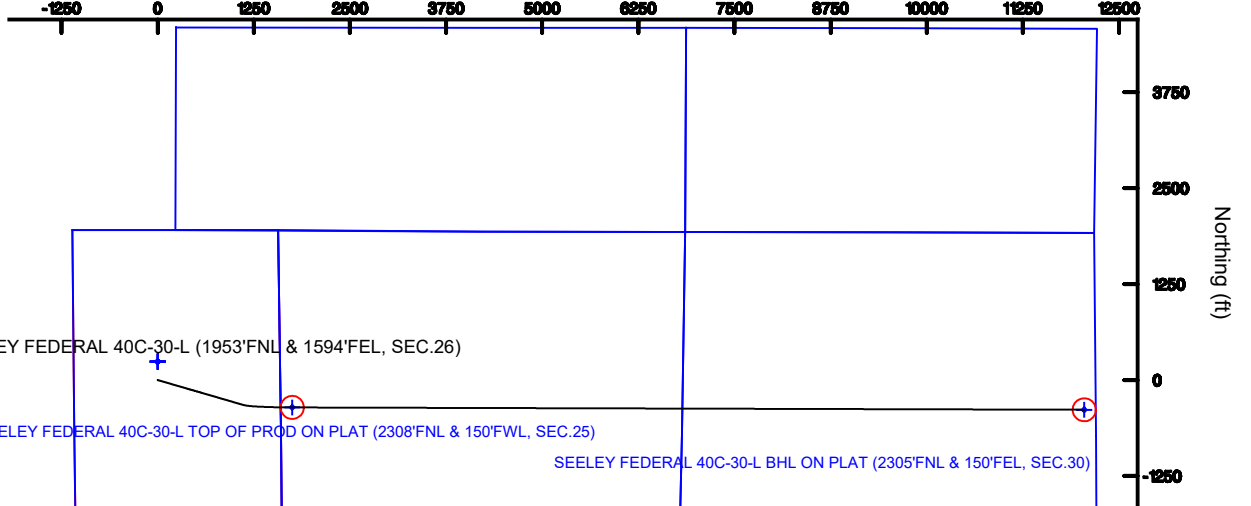
SRC ENERGY



BGGM (1900.0 to 2019.0) Dip: 66.87° Field: 52352.6 nT
Magnetic North is 8.30 degrees East of True North (at 4/24/2018)

To correct azimuth from Magnetic to True add 8.30 degrees

Scale 1 inch = 2500



SEELEY_FEDERAL_40C-30-L__REV-A.0__PWP.las

~VERSION INFORMATION

VERS. 2.0 : CWLS LOG ASCII STANDARD-VERSION 2.0

WRAP. NO : ASCII DATA SECTION CONTAINS ONE ROW PER WELLPATH STATION

~WELL INFORMATION

#MNEM	.UNITS	DATA	:DESCRIPTION
#----	.-----	----	:-----
STRT	.ft	0.00	:START MD
STOP	.ft	17922.28	:STOP MD
STEP	.ft	0.0	:STEP (non-uniform increment)
NULL	.	-999.99	:NULL
COMP	.	SRC ENERGY	:OPERATOR
WELL	.	SEELEY FEDERAL 40C-30-L	:WELL
FLD	.	WELD COUNTY (NAD83,TRUE NORTH)	:FIELD
LOC	.	COLORADO	:AREA (aka: Location)
CNTY	.	N/A	:COUNTY
STAT	.	N/A	:STATE
CTRY	.	N/A	:COUNTRY
SRVC	.	Baker Hughes	:CONTRACTOR
DATE	.	04/25/2018	:LOG REV DATE
API	.		:API NUMBER

~OTHER INFORMATION

#Software: WellArchitect(R) Version 5.0

#MNEM	.UNITS	DATA	:DESCRIPTION
#----	.-----	----	:-----
WPTYPE	.	PLANNED WELLPATH	:WELLPATH TYPE
FACILITY	.	SEC.26-T06N-R66W	:FACILITY
SLOT	.	SLOT#13 SEELEY FEDERAL 40C-30-L (1953'FNL & 1594'FEL, SEC.26):SLOT	
WELLBORE	.	SEELEY FEDERAL 40C-30-L PWB	:WELLBORE
WELLPATH	.	SEELEY FEDERAL 40C-30-L (REV-A.0) PWP	:WELLPATH
MDREFPT	.	PROPETRO 12 (4') (RKB)	:MD REFERENCE POINT
TVDREFPT	.	PROPETRO 12 (4') (RKB)	:TVD REFERENCE POINT
LCLREFPT	.	Slot	:LOCAL COORDINATE
REFERENCE PT			
VSAZIMUTH.deg		91.84	:VERTICAL SECTION
AZIMUTH			
VSORIGN	.ft	0.00	:VERTICAL SECTION ORIGIN
NORTH			
VSORIGE	.ft	0.00	:VERTICAL SECTION ORIGIN
EAST			

~CURVE (WELLPATH) INFORMATION

#MNEM	.UNITS	:DESCRIPTION
#----	.-----	:-----
DEPT	.ft	:MEASURED DEPTH

SEELEY_FEDERAL_40C-30-L___REV-A.0__PWP.las

INC .deg :INCLINATION
 AZI .deg :AZIMUTH
 TVD .ft :TRUE VERTICAL DEPTH
 SECT .ft :CROSS SECTION (CURTAIN/VERTICAL)
 LOCALN .ft :LOCAL NORTH
 LOCALE .ft :LOCAL EAST
 LAT .deg :LATITUDE
 LONG .deg :LONGITUDE
 DLS .deg/100ft :DOGLEG SEVERITY

~ASCII DATA

0.00	0.00	106.25	0.00	0.00	0.00	0.00	0.00	40.4612239
-104.7405950	0.00							
4.00	0.00	106.25	4.00	0.00	0.00	0.00	0.00	40.4612239
-104.7405950	0.00							
104.00	0.00	106.25	104.00	0.00	0.00	0.00	0.00	40.4612239
-104.7405950	0.00							
204.00	0.00	106.25	204.00	0.00	0.00	0.00	0.00	40.4612239
-104.7405950	0.00							
300.00	0.00	106.25	300.00	0.00	0.00	0.00	0.00	40.4612239
-104.7405950	0.00							
304.00	0.08	106.25	304.00	0.00	0.00	0.00	0.00	40.4612239
-104.7405950	2.00							
404.00	2.08	106.25	403.98	1.83	-0.53	1.81		40.4612224
-104.7405885	2.00							
504.00	4.08	106.25	503.83	7.03	-2.03	6.97		40.4612183
-104.7405700	2.00							
604.00	6.08	106.25	603.43	15.61	-4.51	15.47		40.4612115
-104.7405394	2.00							
704.00	8.08	106.25	702.66	27.54	-7.96	27.30		40.4612020
-104.7404969	2.00							
804.00	10.08	106.25	801.40	42.83	-12.38	42.45		40.4611899
-104.7404424	2.00							
846.44	10.93	106.25	843.13	50.32	-14.54	49.88		40.4611840
-104.7404157	2.00							
904.00	10.93	106.25	899.65	60.89	-17.59	60.36		40.4611756
-104.7403781	0.00							
1004.00	10.93	106.25	997.83	79.25	-22.90	78.56		40.4611610
-104.7403127	0.00							
1104.00	10.93	106.25	1096.02	97.62	-28.21	96.76		40.4611465
-104.7402473	0.00							
1204.00	10.93	106.25	1194.21	115.98	-33.51	114.96		40.4611319
-104.7401819	0.00							
1304.00	10.93	106.25	1292.39	134.34	-38.82	133.16		40.4611173
-104.7401165	0.00							
1404.00	10.93	106.25	1390.58	152.70	-44.12	151.36		40.4611028
-104.7400511	0.00							
1504.00	10.93	106.25	1488.77	171.07	-49.43	169.57		40.4610882

SEELEY_FEDERAL_40C-30-L__REV-A.0__PWP.las

-104.7399856	0.00							
1604.00	10.93	106.25	1586.95	189.43	-54.73	187.77	40.4610736	
-104.7399202	0.00							
1704.00	10.93	106.25	1685.14	207.79	-60.04	205.97	40.4610591	
-104.7398548	0.00							
1804.00	10.93	106.25	1783.33	226.15	-65.35	224.17	40.4610445	
-104.7397894	0.00							
1904.00	10.93	106.25	1881.51	244.51	-70.65	242.37	40.4610300	
-104.7397240	0.00							
2004.00	10.93	106.25	1979.70	262.88	-75.96	260.57	40.4610154	
-104.7396586	0.00							
2104.00	10.93	106.25	2077.89	281.24	-81.26	278.77	40.4610008	
-104.7395932	0.00							
2204.00	10.93	106.25	2176.07	299.60	-86.57	296.97	40.4609863	
-104.7395278	0.00							
2304.00	10.93	106.25	2274.26	317.96	-91.87	315.17	40.4609717	
-104.7394624	0.00							
2404.00	10.93	106.25	2372.44	336.33	-97.18	333.38	40.4609571	
-104.7393970	0.00							
2504.00	10.93	106.25	2470.63	354.69	-102.48	351.58	40.4609426	
-104.7393316	0.00							
2604.00	10.93	106.25	2568.82	373.05	-107.79	369.78	40.4609280	
-104.7392662	0.00							
2704.00	10.93	106.25	2667.00	391.41	-113.10	387.98	40.4609134	
-104.7392007	0.00							
2804.00	10.93	106.25	2765.19	409.77	-118.40	406.18	40.4608989	
-104.7391353	0.00							
2904.00	10.93	106.25	2863.38	428.14	-123.71	424.38	40.4608843	
-104.7390699	0.00							
3004.00	10.93	106.25	2961.56	446.50	-129.01	442.58	40.4608698	
-104.7390045	0.00							
3104.00	10.93	106.25	3059.75	464.86	-134.32	460.78	40.4608552	
-104.7389391	0.00							
3204.00	10.93	106.25	3157.94	483.22	-139.62	478.99	40.4608406	
-104.7388737	0.00							
3304.00	10.93	106.25	3256.12	501.59	-144.93	497.19	40.4608261	
-104.7388083	0.00							
3404.00	10.93	106.25	3354.31	519.95	-150.24	515.39	40.4608115	
-104.7387429	0.00							
3504.00	10.93	106.25	3452.49	538.31	-155.54	533.59	40.4607969	
-104.7386775	0.00							
3604.00	10.93	106.25	3550.68	556.67	-160.85	551.79	40.4607824	
-104.7386121	0.00							
3704.00	10.93	106.25	3648.87	575.04	-166.15	569.99	40.4607678	
-104.7385467	0.00							
3804.00	10.93	106.25	3747.05	593.40	-171.46	588.19	40.4607532	
-104.7384813	0.00							
3904.00	10.93	106.25	3845.24	611.76	-176.76	606.39	40.4607387	

SEELEY_FEDERAL_40C-30-L__REV-A.0__PWP.las

-104.7384159	0.00						
4004.00	10.93	106.25	3943.43	630.12	-182.07	624.60	40.4607241
-104.7383504	0.00						
4104.00	10.93	106.25	4041.61	648.48	-187.38	642.80	40.4607095
-104.7382850	0.00						
4204.00	10.93	106.25	4139.80	666.85	-192.68	661.00	40.4606950
-104.7382196	0.00						
4304.00	10.93	106.25	4237.99	685.21	-197.99	679.20	40.4606804
-104.7381542	0.00						
4404.00	10.93	106.25	4336.17	703.57	-203.29	697.40	40.4606659
-104.7380888	0.00						
4504.00	10.93	106.25	4434.36	721.93	-208.60	715.60	40.4606513
-104.7380234	0.00						
4604.00	10.93	106.25	4532.54	740.30	-213.90	733.80	40.4606367
-104.7379580	0.00						
4704.00	10.93	106.25	4630.73	758.66	-219.21	752.00	40.4606222
-104.7378926	0.00						
4804.00	10.93	106.25	4728.92	777.02	-224.52	770.21	40.4606076
-104.7378272	0.00						
4904.00	10.93	106.25	4827.10	795.38	-229.82	788.41	40.4605930
-104.7377618	0.00						
5004.00	10.93	106.25	4925.29	813.74	-235.13	806.61	40.4605785
-104.7376964	0.00						
5104.00	10.93	106.25	5023.48	832.11	-240.43	824.81	40.4605639
-104.7376310	0.00						
5204.00	10.93	106.25	5121.66	850.47	-245.74	843.01	40.4605493
-104.7375656	0.00						
5304.00	10.93	106.25	5219.85	868.83	-251.04	861.21	40.4605348
-104.7375001	0.00						
5404.00	10.93	106.25	5318.04	887.19	-256.35	879.41	40.4605202
-104.7374347	0.00						
5504.00	10.93	106.25	5416.22	905.56	-261.65	897.61	40.4605056
-104.7373693	0.00						
5604.00	10.93	106.25	5514.41	923.92	-266.96	915.82	40.4604911
-104.7373039	0.00						
5704.00	10.93	106.25	5612.59	942.28	-272.27	934.02	40.4604765
-104.7372385	0.00						
5804.00	10.93	106.25	5710.78	960.64	-277.57	952.22	40.4604619
-104.7371731	0.00						
5904.00	10.93	106.25	5808.97	979.01	-282.88	970.42	40.4604474
-104.7371077	0.00						
6004.00	10.93	106.25	5907.15	997.37	-288.18	988.62	40.4604328
-104.7370423	0.00						
6104.00	10.93	106.25	6005.34	1015.73	-293.49	1006.82	40.4604182
-104.7369769	0.00						
6204.00	10.93	106.25	6103.53	1034.09	-298.79	1025.02	40.4604037
-104.7369115	0.00						
6304.00	10.93	106.25	6201.71	1052.45	-304.10	1043.22	40.4603891

SEELEY_FEDERAL_40C-30-L__REV-A.0__PWP.las

-104.7368461	0.00						
6404.00	10.93	106.25	6299.90	1070.82	-309.41	1061.43	40.4603745
-104.7367807	0.00						
6504.00	10.93	106.25	6398.09	1089.18	-314.71	1079.63	40.4603600
-104.7367153	0.00						
6604.00	10.93	106.25	6496.27	1107.54	-320.02	1097.83	40.4603454
-104.7366499	0.00						
6704.00	10.93	106.25	6594.46	1125.90	-325.32	1116.03	40.4603309
-104.7365844	0.00						
6739.28	10.93	106.25	6629.10	1132.38	-327.19	1122.45	40.4603257
-104.7365614	0.00						
6804.00	16.60	100.51	6691.94	1147.47	-330.60	1137.44	40.4603164
-104.7365075	9.00						
6904.00	25.49	96.62	6785.18	1183.11	-335.69	1172.93	40.4603024
-104.7363800	9.00						
7004.00	34.44	94.65	6871.72	1232.90	-340.48	1222.60	40.4602892
-104.7362015	9.00						
7104.00	43.41	93.42	6949.44	1295.62	-344.82	1285.21	40.4602773
-104.7359765	9.00						
7204.00	52.38	92.54	7016.42	1369.72	-348.63	1359.23	40.4602668
-104.7357105	9.00						
7304.00	61.37	91.85	7071.01	1453.38	-351.81	1442.83	40.4602581
-104.7354101	9.00						
7404.00	70.35	91.27	7111.87	1544.54	-354.28	1533.95	40.4602513
-104.7350826	9.00						
7504.00	79.34	90.75	7137.99	1640.96	-355.97	1630.36	40.4602467
-104.7347362	9.00						
7604.00	88.32	90.27	7148.73	1740.25	-356.85	1729.68	40.4602442
-104.7343793	9.00						
7624.39	90.16	90.17	7149.00	1760.62	-356.93	1750.06	40.4602440
-104.7343060	9.00						
7704.00	90.16	90.17	7148.78	1840.20	-357.16	1829.67	40.4602433
-104.7340199	0.00						
7804.00	90.16	90.17	7148.51	1940.16	-357.46	1929.67	40.4602425
-104.7336606	0.00						
7904.00	90.16	90.17	7148.24	2040.12	-357.75	2029.67	40.4602417
-104.7333012	0.00						
8004.00	90.16	90.17	7147.97	2140.07	-358.04	2129.67	40.4602409
-104.7329418	0.00						
8104.00	90.16	90.17	7147.70	2240.03	-358.34	2229.67	40.4602400
-104.7325825	0.00						
8204.00	90.16	90.17	7147.42	2339.99	-358.63	2329.67	40.4602392
-104.7322231	0.00						
8304.00	90.16	90.17	7147.15	2439.94	-358.92	2429.67	40.4602384
-104.7318638	0.00						
8404.00	90.16	90.17	7146.88	2539.90	-359.22	2529.67	40.4602375
-104.7315044	0.00						
8504.00	90.16	90.17	7146.61	2639.86	-359.51	2629.67	40.4602367

SEELEY_FEDERAL_40C-30-L__REV-A.0__PWP.las

-104.7311451	0.00						
8604.00	90.16	90.17	7146.34	2739.81	-359.81	2729.67	40.4602359
-104.7307857	0.00						
8704.00	90.16	90.17	7146.06	2839.77	-360.10	2829.67	40.4602350
-104.7304264	0.00						
8804.00	90.16	90.17	7145.79	2939.73	-360.39	2929.66	40.4602342
-104.7300670	0.00						
8904.00	90.16	90.17	7145.52	3039.69	-360.69	3029.66	40.4602333
-104.7297076	0.00						
9004.00	90.16	90.17	7145.25	3139.64	-360.98	3129.66	40.4602325
-104.7293483	0.00						
9104.00	90.16	90.17	7144.98	3239.60	-361.28	3229.66	40.4602317
-104.7289889	0.00						
9204.00	90.16	90.17	7144.71	3339.56	-361.57	3329.66	40.4602308
-104.7286296	0.00						
9304.00	90.16	90.17	7144.43	3439.51	-361.86	3429.66	40.4602300
-104.7282702	0.00						
9404.00	90.16	90.17	7144.16	3539.47	-362.16	3529.66	40.4602291
-104.7279109	0.00						
9504.00	90.16	90.17	7143.89	3639.43	-362.45	3629.66	40.4602283
-104.7275515	0.00						
9604.00	90.16	90.17	7143.62	3739.39	-362.75	3729.66	40.4602274
-104.7271922	0.00						
9704.00	90.16	90.17	7143.35	3839.34	-363.04	3829.66	40.4602266
-104.7268328	0.00						
9804.00	90.16	90.17	7143.07	3939.30	-363.33	3929.66	40.4602257
-104.7264734	0.00						
9904.00	90.16	90.17	7142.80	4039.26	-363.63	4029.66	40.4602249
-104.7261141	0.00						
10004.00	90.16	90.17	7142.53	4139.21	-363.92	4129.65	40.4602240
-104.7257547	0.00						
10104.00	90.16	90.17	7142.26	4239.17	-364.22	4229.65	40.4602232
-104.7253954	0.00						
10204.00	90.16	90.17	7141.99	4339.13	-364.51	4329.65	40.4602223
-104.7250360	0.00						
10304.00	90.16	90.17	7141.71	4439.08	-364.80	4429.65	40.4602215
-104.7246767	0.00						
10404.00	90.16	90.17	7141.44	4539.04	-365.10	4529.65	40.4602206
-104.7243173	0.00						
10504.00	90.16	90.17	7141.17	4639.00	-365.39	4629.65	40.4602197
-104.7239580	0.00						
10604.00	90.16	90.17	7140.90	4738.96	-365.69	4729.65	40.4602189
-104.7235986	0.00						
10704.00	90.16	90.17	7140.63	4838.91	-365.98	4829.65	40.4602180
-104.7232392	0.00						
10804.00	90.16	90.17	7140.35	4938.87	-366.27	4929.65	40.4602172
-104.7228799	0.00						
10904.00	90.16	90.17	7140.08	5038.83	-366.57	5029.65	40.4602163

SEELEY_FEDERAL_40C-30-L__REV-A.0__PWP.las

-104.7225205	0.00						
11004.00	90.16	90.17	7139.81	5138.78	-366.86	5129.65	40.4602154
-104.7221612	0.00						
11104.00	90.16	90.17	7139.54	5238.74	-367.16	5229.65	40.4602146
-104.7218018	0.00						
11204.00	90.16	90.17	7139.27	5338.70	-367.45	5329.65	40.4602137
-104.7214425	0.00						
11304.00	90.16	90.17	7139.00	5438.65	-367.74	5429.64	40.4602128
-104.7210831	0.00						
11404.00	90.16	90.17	7138.72	5538.61	-368.04	5529.64	40.4602120
-104.7207238	0.00						
11504.00	90.16	90.17	7138.45	5638.57	-368.33	5629.64	40.4602111
-104.7203644	0.00						
11604.00	90.16	90.17	7138.18	5738.53	-368.63	5729.64	40.4602102
-104.7200050	0.00						
11704.00	90.16	90.17	7137.91	5838.48	-368.92	5829.64	40.4602094
-104.7196457	0.00						
11804.00	90.16	90.17	7137.64	5938.44	-369.21	5929.64	40.4602085
-104.7192863	0.00						
11904.00	90.16	90.17	7137.36	6038.40	-369.51	6029.64	40.4602076
-104.7189270	0.00						
12004.00	90.16	90.17	7137.09	6138.35	-369.80	6129.64	40.4602067
-104.7185676	0.00						
12104.00	90.16	90.17	7136.82	6238.31	-370.10	6229.64	40.4602059
-104.7182083	0.00						
12204.00	90.16	90.17	7136.55	6338.27	-370.39	6329.64	40.4602050
-104.7178489	0.00						
12304.00	90.16	90.17	7136.28	6438.23	-370.68	6429.64	40.4602041
-104.7174896	0.00						
12404.00	90.16	90.17	7136.00	6538.18	-370.98	6529.64	40.4602032
-104.7171302	0.00						
12504.00	90.16	90.17	7135.73	6638.14	-371.27	6629.63	40.4602024
-104.7167709	0.00						
12604.00	90.16	90.17	7135.46	6738.10	-371.57	6729.63	40.4602015
-104.7164115	0.00						
12704.00	90.16	90.17	7135.19	6838.05	-371.86	6829.63	40.4602006
-104.7160521	0.00						
12804.00	90.16	90.17	7134.92	6938.01	-372.15	6929.63	40.4601997
-104.7156928	0.00						
12904.00	90.16	90.17	7134.64	7037.97	-372.45	7029.63	40.4601988
-104.7153334	0.00						
13004.00	90.16	90.17	7134.37	7137.92	-372.74	7129.63	40.4601979
-104.7149741	0.00						
13104.00	90.16	90.17	7134.10	7237.88	-373.04	7229.63	40.4601970
-104.7146147	0.00						
13204.00	90.16	90.17	7133.83	7337.84	-373.33	7329.63	40.4601962
-104.7142554	0.00						
13304.00	90.16	90.17	7133.56	7437.80	-373.62	7429.63	40.4601953

SEELEY_FEDERAL_40C-30-L__REV-A.0__PWP.las

-104.7138960	0.00						
13404.00	90.16	90.17	7133.29	7537.75	-373.92	7529.63	40.4601944
-104.7135367	0.00						
13504.00	90.16	90.17	7133.01	7637.71	-374.21	7629.63	40.4601935
-104.7131773	0.00						
13604.00	90.16	90.17	7132.74	7737.67	-374.51	7729.63	40.4601926
-104.7128179	0.00						
13704.00	90.16	90.17	7132.47	7837.62	-374.80	7829.63	40.4601917
-104.7124586	0.00						
13804.00	90.16	90.17	7132.20	7937.58	-375.09	7929.62	40.4601908
-104.7120992	0.00						
13904.00	90.16	90.17	7131.93	8037.54	-375.39	8029.62	40.4601899
-104.7117399	0.00						
14004.00	90.16	90.17	7131.65	8137.49	-375.68	8129.62	40.4601890
-104.7113805	0.00						
14104.00	90.16	90.17	7131.38	8237.45	-375.98	8229.62	40.4601881
-104.7110212	0.00						
14204.00	90.16	90.17	7131.11	8337.41	-376.27	8329.62	40.4601872
-104.7106618	0.00						
14304.00	90.16	90.17	7130.84	8437.37	-376.56	8429.62	40.4601863
-104.7103025	0.00						
14404.00	90.16	90.17	7130.57	8537.32	-376.86	8529.62	40.4601854
-104.7099431	0.00						
14504.00	90.16	90.17	7130.29	8637.28	-377.15	8629.62	40.4601845
-104.7095837	0.00						
14604.00	90.16	90.17	7130.02	8737.24	-377.45	8729.62	40.4601836
-104.7092244	0.00						
14704.00	90.16	90.17	7129.75	8837.19	-377.74	8829.62	40.4601827
-104.7088650	0.00						
14804.00	90.16	90.17	7129.48	8937.15	-378.03	8929.62	40.4601818
-104.7085057	0.00						
14904.00	90.16	90.17	7129.21	9037.11	-378.33	9029.62	40.4601809
-104.7081463	0.00						
15004.00	90.16	90.17	7128.93	9137.07	-378.62	9129.61	40.4601800
-104.7077870	0.00						
15104.00	90.16	90.17	7128.66	9237.02	-378.92	9229.61	40.4601791
-104.7074276	0.00						
15204.00	90.16	90.17	7128.39	9336.98	-379.21	9329.61	40.4601782
-104.7070683	0.00						
15304.00	90.16	90.17	7128.12	9436.94	-379.50	9429.61	40.4601773
-104.7067089	0.00						
15404.00	90.16	90.17	7127.85	9536.89	-379.80	9529.61	40.4601763
-104.7063496	0.00						
15504.00	90.16	90.17	7127.58	9636.85	-380.09	9629.61	40.4601754
-104.7059902	0.00						
15604.00	90.16	90.17	7127.30	9736.81	-380.39	9729.61	40.4601745
-104.7056308	0.00						
15704.00	90.16	90.17	7127.03	9836.76	-380.68	9829.61	40.4601736

SEELEY_FEDERAL_40C-30-L__REV-A.0__PWP.las

-104.7052715	0.00						
15804.00	90.16	90.17	7126.76	9936.72	-380.97	9929.61	40.4601727
-104.7049121	0.00						
15904.00	90.16	90.17	7126.49	10036.68	-381.27	10029.61	40.4601718
-104.7045528	0.00						
16004.00	90.16	90.17	7126.22	10136.64	-381.56	10129.61	40.4601708
-104.7041934	0.00						
16104.00	90.16	90.17	7125.94	10236.59	-381.86	10229.61	40.4601699
-104.7038341	0.00						
16204.00	90.16	90.17	7125.67	10336.55	-382.15	10329.60	40.4601690
-104.7034747	0.00						
16304.00	90.16	90.17	7125.40	10436.51	-382.44	10429.60	40.4601681
-104.7031154	0.00						
16404.00	90.16	90.17	7125.13	10536.46	-382.74	10529.60	40.4601672
-104.7027560	0.00						
16504.00	90.16	90.17	7124.86	10636.42	-383.03	10629.60	40.4601662
-104.7023966	0.00						
16604.00	90.16	90.17	7124.58	10736.38	-383.33	10729.60	40.4601653
-104.7020373	0.00						
16704.00	90.16	90.17	7124.31	10836.34	-383.62	10829.60	40.4601644
-104.7016779	0.00						
16804.00	90.16	90.17	7124.04	10936.29	-383.91	10929.60	40.4601635
-104.7013186	0.00						
16904.00	90.16	90.17	7123.77	11036.25	-384.21	11029.60	40.4601625
-104.7009592	0.00						
17004.00	90.16	90.17	7123.50	11136.21	-384.50	11129.60	40.4601616
-104.7005999	0.00						
17104.00	90.16	90.17	7123.22	11236.16	-384.80	11229.60	40.4601607
-104.7002405	0.00						
17204.00	90.16	90.17	7122.95	11336.12	-385.09	11329.60	40.4601597
-104.6998812	0.00						
17304.00	90.16	90.17	7122.68	11436.08	-385.38	11429.60	40.4601588
-104.6995218	0.00						
17404.00	90.16	90.17	7122.41	11536.03	-385.68	11529.60	40.4601579
-104.6991625	0.00						
17504.00	90.16	90.17	7122.14	11635.99	-385.97	11629.59	40.4601569
-104.6988031	0.00						
17604.00	90.16	90.17	7121.87	11735.95	-386.27	11729.59	40.4601560
-104.6984437	0.00						
17704.00	90.16	90.17	7121.59	11835.91	-386.56	11829.59	40.4601551
-104.6980844	0.00						
17804.00	90.16	90.17	7121.32	11935.86	-386.85	11929.59	40.4601541
-104.6977250	0.00						
17904.00	90.16	90.17	7121.05	12035.82	-387.15	12029.59	40.4601532
-104.6973657	0.00						
17922.28	90.16	90.17	7121.00	12054.09	-387.20	12047.87	40.4601530
-104.6973000	0.00						



SRC ENERGY

Planned Wellpath Report

SEELEY FEDERAL 40C-30-L (REV-A.0) PWP

Page 1 of 9



REFERENCE WELLPATH IDENTIFICATION

Operator	SRC ENERGY	Slot	SLOT#13 SEELEY FEDERAL 40C-30-L (1953'FNL & 1594'FEL, SEC.26)
Area	COLORADO	Well	SEELEY FEDERAL 40C-30-L
Field	WELD COUNTY (NAD83, TRUE NORTH)	Wellbore	SEELEY FEDERAL 40C-30-L PWB
Facility	SEC.26-T06N-R66W		

REPORT SETUP INFORMATION

Projection System	NAD83 / Lambert Colorado SP, Northern Zone (501), US feet	Software System	WellArchitect® 5.0
North Reference	True	User	Doddanna
Scale	0.999964	Report Generated	5/10/2018 at 5:25:59 PM
Convergence at slot	0.49° East	Database/Source file	WellArchitectDB/SEELEY_FEDERAL_40C-30-L__REV-A.0__PWP.xml

WELLPATH LOCATION

	Local coordinates		Grid coordinates		Geographic coordinates	
	North[ft]	East[ft]	Easting[US ft]	Northing[US ft]	Latitude	Longitude
Slot Location	-240.12	-1.95	3211308.57	1411769.04	40°27'40.406"N	104°44'26.142"W
Facility Reference Pt			3211308.46	1412009.16	40°27'42.779"N	104°44'26.117"W
Field Reference Pt			3171284.48	1426358.81	40°30'07.643"N	104°53'02.634"W

WELLPATH DATUM

Calculation method	Minimum curvature	PROPETRO 12 (4') (RKB) to Facility Vertical Datum	4701.00ft
Horizontal Reference Pt	Slot	PROPETRO 12 (4') (RKB) to Mean Sea Level	4701.00ft
Vertical Reference Pt	PROPETRO 12 (4') (RKB)	PROPETRO 12 (4') (RKB) to Mud Line at Slot (SLOT#13 SEELEY FEDERAL 40C-30-L (1953'FNL & 1594'FEL, SEC.26))	4701.00ft
MD Reference Pt	PROPETRO 12 (4') (RKB)	Section Origin	N 0.00, E 0.00 ft
Field Vertical Reference	Mean Sea Level	Section Azimuth	91.84°



SRC ENERGY

Planned Wellpath Report

SEELEY FEDERAL 40C-30-L (REV-A.0) PWP

Page 2 of 9

**REFERENCE WELLPATH IDENTIFICATION**

Operator	SRC ENERGY	Slot	SLOT#13 SEELEY FEDERAL 40C-30-L (1953'FNL & 1594'FEL, SEC.26)
Area	COLORADO	Well	SEELEY FEDERAL 40C-30-L
Field	WELD COUNTY (NAD83, TRUE NORTH)	Wellbore	SEELEY FEDERAL 40C-30-L PWB
Facility	SEC.26-T06N-R66W		

WELLPATH DATA (186 stations) † = interpolated/extrapolated station

MD [ft]	Inclination [°]	Azimuth [°]	TVD [ft]	Vert Sect [ft]	North [ft]	East [ft]	DLS [°/100ft]	Comments
0.00†	0.000	106.251	0.00	0.00	0.00	0.00	0.00	
4.00	0.000	106.251	4.00	0.00	0.00	0.00	0.00	Tie On
104.00†	0.000	106.251	104.00	0.00	0.00	0.00	0.00	
204.00†	0.000	106.251	204.00	0.00	0.00	0.00	0.00	
300.00	0.000	106.251	300.00	0.00	0.00	0.00	0.00	End of Tangent
304.00†	0.080	106.251	304.00	0.00	0.00	0.00	2.00	
404.00†	2.080	106.251	403.98	1.83	-0.53	1.81	2.00	
504.00†	4.080	106.251	503.83	7.03	-2.03	6.97	2.00	
604.00†	6.080	106.251	603.43	15.61	-4.51	15.47	2.00	
704.00†	8.080	106.251	702.66	27.54	-7.96	27.30	2.00	
804.00†	10.080	106.251	801.40	42.83	-12.38	42.45	2.00	
846.44	10.929	106.251	843.13	50.32	-14.54	49.88	2.00	End of Build (XS)
904.00†	10.929	106.251	899.65	60.89	-17.59	60.36	0.00	
1004.00†	10.929	106.251	997.83	79.25	-22.90	78.56	0.00	
1104.00†	10.929	106.251	1096.02	97.62	-28.21	96.76	0.00	
1204.00†	10.929	106.251	1194.21	115.98	-33.51	114.96	0.00	
1304.00†	10.929	106.251	1292.39	134.34	-38.82	133.16	0.00	
1404.00†	10.929	106.251	1390.58	152.70	-44.12	151.36	0.00	
1504.00†	10.929	106.251	1488.77	171.07	-49.43	169.57	0.00	
1604.00†	10.929	106.251	1586.95	189.43	-54.73	187.77	0.00	
1704.00†	10.929	106.251	1685.14	207.79	-60.04	205.97	0.00	
1804.00†	10.929	106.251	1783.33	226.15	-65.35	224.17	0.00	
1904.00†	10.929	106.251	1881.51	244.51	-70.65	242.37	0.00	
2004.00†	10.929	106.251	1979.70	262.88	-75.96	260.57	0.00	
2104.00†	10.929	106.251	2077.89	281.24	-81.26	278.77	0.00	
2204.00†	10.929	106.251	2176.07	299.60	-86.57	296.97	0.00	
2304.00†	10.929	106.251	2274.26	317.96	-91.87	315.17	0.00	
2404.00†	10.929	106.251	2372.44	336.33	-97.18	333.38	0.00	
2504.00†	10.929	106.251	2470.63	354.69	-102.48	351.58	0.00	
2604.00†	10.929	106.251	2568.82	373.05	-107.79	369.78	0.00	



SRC ENERGY

Planned Wellpath Report

SEELEY FEDERAL 40C-30-L (REV-A.0) PWP

Page 3 of 9

**REFERENCE WELLPATH IDENTIFICATION**

Operator	SRC ENERGY	Slot	SLOT#13 SEELEY FEDERAL 40C-30-L (1953'FNL & 1594'FEL, SEC.26)
Area	COLORADO	Well	SEELEY FEDERAL 40C-30-L
Field	WELD COUNTY (NAD83, TRUE NORTH)	Wellbore	SEELEY FEDERAL 40C-30-L PWB
Facility	SEC.26-T06N-R66W		

WELLPATH DATA (186 stations) † = interpolated/extrapolated station

MD [ft]	Inclination [°]	Azimuth [°]	TVD [ft]	Vert Sect [ft]	North [ft]	East [ft]	DLS [°/100ft]	Comments
2704.00†	10.929	106.251	2667.00	391.41	-113.10	387.98	0.00	
2804.00†	10.929	106.251	2765.19	409.77	-118.40	406.18	0.00	
2904.00†	10.929	106.251	2863.38	428.14	-123.71	424.38	0.00	
3004.00†	10.929	106.251	2961.56	446.50	-129.01	442.58	0.00	
3104.00†	10.929	106.251	3059.75	464.86	-134.32	460.78	0.00	
3204.00†	10.929	106.251	3157.94	483.22	-139.62	478.99	0.00	
3304.00†	10.929	106.251	3256.12	501.59	-144.93	497.19	0.00	
3404.00†	10.929	106.251	3354.31	519.95	-150.24	515.39	0.00	
3504.00†	10.929	106.251	3452.49	538.31	-155.54	533.59	0.00	
3604.00†	10.929	106.251	3550.68	556.67	-160.85	551.79	0.00	
3704.00†	10.929	106.251	3648.87	575.04	-166.15	569.99	0.00	
3804.00†	10.929	106.251	3747.05	593.40	-171.46	588.19	0.00	
3904.00†	10.929	106.251	3845.24	611.76	-176.76	606.39	0.00	
4004.00†	10.929	106.251	3943.43	630.12	-182.07	624.60	0.00	
4104.00†	10.929	106.251	4041.61	648.48	-187.38	642.80	0.00	
4204.00†	10.929	106.251	4139.80	666.85	-192.68	661.00	0.00	
4304.00†	10.929	106.251	4237.99	685.21	-197.99	679.20	0.00	
4404.00†	10.929	106.251	4336.17	703.57	-203.29	697.40	0.00	
4504.00†	10.929	106.251	4434.36	721.93	-208.60	715.60	0.00	
4604.00†	10.929	106.251	4532.54	740.30	-213.90	733.80	0.00	
4704.00†	10.929	106.251	4630.73	758.66	-219.21	752.00	0.00	
4804.00†	10.929	106.251	4728.92	777.02	-224.52	770.21	0.00	
4904.00†	10.929	106.251	4827.10	795.38	-229.82	788.41	0.00	
5004.00†	10.929	106.251	4925.29	813.74	-235.13	806.61	0.00	
5104.00†	10.929	106.251	5023.48	832.11	-240.43	824.81	0.00	
5204.00†	10.929	106.251	5121.66	850.47	-245.74	843.01	0.00	
5304.00†	10.929	106.251	5219.85	868.83	-251.04	861.21	0.00	
5404.00†	10.929	106.251	5318.04	887.19	-256.35	879.41	0.00	
5504.00†	10.929	106.251	5416.22	905.56	-261.65	897.61	0.00	
5604.00†	10.929	106.251	5514.41	923.92	-266.96	915.82	0.00	



SRC ENERGY

Planned Wellpath Report

SEELEY FEDERAL 40C-30-L (REV-A.0) PWP

Page 4 of 9

**REFERENCE WELLPATH IDENTIFICATION**

Operator	SRC ENERGY	Slot	SLOT#13 SEELEY FEDERAL 40C-30-L (1953'FNL & 1594'FEL, SEC.26)
Area	COLORADO	Well	SEELEY FEDERAL 40C-30-L
Field	WELD COUNTY (NAD83, TRUE NORTH)	Wellbore	SEELEY FEDERAL 40C-30-L PWB
Facility	SEC.26-T06N-R66W		

WELLPATH DATA (186 stations) † = interpolated/extrapolated station

MD [ft]	Inclination [°]	Azimuth [°]	TVD [ft]	Vert Sect [ft]	North [ft]	East [ft]	DLS [°/100ft]	Comments
5704.00†	10.929	106.251	5612.59	942.28	-272.27	934.02	0.00	
5804.00†	10.929	106.251	5710.78	960.64	-277.57	952.22	0.00	
5904.00†	10.929	106.251	5808.97	979.01	-282.88	970.42	0.00	
6004.00†	10.929	106.251	5907.15	997.37	-288.18	988.62	0.00	
6104.00†	10.929	106.251	6005.34	1015.73	-293.49	1006.82	0.00	
6204.00†	10.929	106.251	6103.53	1034.09	-298.79	1025.02	0.00	
6304.00†	10.929	106.251	6201.71	1052.45	-304.10	1043.22	0.00	
6404.00†	10.929	106.251	6299.90	1070.82	-309.41	1061.43	0.00	
6504.00†	10.929	106.251	6398.09	1089.18	-314.71	1079.63	0.00	
6604.00†	10.929	106.251	6496.27	1107.54	-320.02	1097.83	0.00	
6704.00†	10.929	106.251	6594.46	1125.90	-325.32	1116.03	0.00	
6739.28	10.929	106.251	6629.10	1132.38	-327.19	1122.45	0.00	End of Tangent (XS)
6804.00†	16.598	100.510	6691.94	1147.47	-330.60	1137.44	9.00	
6904.00†	25.493	96.615	6785.18	1183.11	-335.69	1172.93	9.00	
7004.00†	34.441	94.648	6871.72	1232.90	-340.48	1222.60	9.00	
7104.00†	43.408	93.417	6949.44	1295.62	-344.82	1285.21	9.00	
7204.00†	52.384	92.538	7016.42	1369.72	-348.63	1359.23	9.00	
7304.00†	61.366	91.850	7071.01	1453.38	-351.81	1442.83	9.00	
7404.00†	70.350	91.271	7111.87	1544.54	-354.28	1533.95	9.00	
7504.00†	79.336	90.754	7137.99	1640.96	-355.97	1630.36	9.00	
7604.00†	88.323	90.266	7148.73	1740.25	-356.85	1729.68	9.00	
7624.39	90.156	90.168	7149.00†	1760.62	-356.93	1750.06	9.00	End of 3D Arc (XS)
7704.00†	90.156	90.168	7148.78	1840.20	-357.16	1829.67	0.00	
7804.00†	90.156	90.168	7148.51	1940.16	-357.46	1929.67	0.00	
7904.00†	90.156	90.168	7148.24	2040.12	-357.75	2029.67	0.00	
8004.00†	90.156	90.168	7147.97	2140.07	-358.04	2129.67	0.00	
8104.00†	90.156	90.168	7147.70	2240.03	-358.34	2229.67	0.00	
8204.00†	90.156	90.168	7147.42	2339.99	-358.63	2329.67	0.00	
8304.00†	90.156	90.168	7147.15	2439.94	-358.92	2429.67	0.00	
8404.00†	90.156	90.168	7146.88	2539.90	-359.22	2529.67	0.00	



SRC ENERGY

Planned Wellpath Report

SEELEY FEDERAL 40C-30-L (REV-A.0) PWP

Page 5 of 9

**REFERENCE WELLPATH IDENTIFICATION**

Operator	SRC ENERGY	Slot	SLOT#13 SEELEY FEDERAL 40C-30-L (1953'FNL & 1594'FEL, SEC.26)
Area	COLORADO	Well	SEELEY FEDERAL 40C-30-L
Field	WELD COUNTY (NAD83, TRUE NORTH)	Wellbore	SEELEY FEDERAL 40C-30-L PWB
Facility	SEC.26-T06N-R66W		

WELLPATH DATA (186 stations) † = interpolated/extrapolated station

MD [ft]	Inclination [°]	Azimuth [°]	TVD [ft]	Vert Sect [ft]	North [ft]	East [ft]	DLS [°/100ft]	Comments
8504.00†	90.156	90.168	7146.61	2639.86	-359.51	2629.67	0.00	
8604.00†	90.156	90.168	7146.34	2739.81	-359.81	2729.67	0.00	
8704.00†	90.156	90.168	7146.06	2839.77	-360.10	2829.67	0.00	
8804.00†	90.156	90.168	7145.79	2939.73	-360.39	2929.66	0.00	
8904.00†	90.156	90.168	7145.52	3039.69	-360.69	3029.66	0.00	
9004.00†	90.156	90.168	7145.25	3139.64	-360.98	3129.66	0.00	
9104.00†	90.156	90.168	7144.98	3239.60	-361.28	3229.66	0.00	
9204.00†	90.156	90.168	7144.71	3339.56	-361.57	3329.66	0.00	
9304.00†	90.156	90.168	7144.43	3439.51	-361.86	3429.66	0.00	
9404.00†	90.156	90.168	7144.16	3539.47	-362.16	3529.66	0.00	
9504.00†	90.156	90.168	7143.89	3639.43	-362.45	3629.66	0.00	
9604.00†	90.156	90.168	7143.62	3739.39	-362.75	3729.66	0.00	
9704.00†	90.156	90.168	7143.35	3839.34	-363.04	3829.66	0.00	
9804.00†	90.156	90.168	7143.07	3939.30	-363.33	3929.66	0.00	
9904.00†	90.156	90.168	7142.80	4039.26	-363.63	4029.66	0.00	
10004.00†	90.156	90.168	7142.53	4139.21	-363.92	4129.65	0.00	
10104.00†	90.156	90.168	7142.26	4239.17	-364.22	4229.65	0.00	
10204.00†	90.156	90.168	7141.99	4339.13	-364.51	4329.65	0.00	
10304.00†	90.156	90.168	7141.71	4439.08	-364.80	4429.65	0.00	
10404.00†	90.156	90.168	7141.44	4539.04	-365.10	4529.65	0.00	
10504.00†	90.156	90.168	7141.17	4639.00	-365.39	4629.65	0.00	
10604.00†	90.156	90.168	7140.90	4738.96	-365.69	4729.65	0.00	
10704.00†	90.156	90.168	7140.63	4838.91	-365.98	4829.65	0.00	
10804.00†	90.156	90.168	7140.35	4938.87	-366.27	4929.65	0.00	
10904.00†	90.156	90.168	7140.08	5038.83	-366.57	5029.65	0.00	
11004.00†	90.156	90.168	7139.81	5138.78	-366.86	5129.65	0.00	
11104.00†	90.156	90.168	7139.54	5238.74	-367.16	5229.65	0.00	
11204.00†	90.156	90.168	7139.27	5338.70	-367.45	5329.65	0.00	
11304.00†	90.156	90.168	7139.00	5438.65	-367.74	5429.64	0.00	
11404.00†	90.156	90.168	7138.72	5538.61	-368.04	5529.64	0.00	



SRC ENERGY

Planned Wellpath Report

SEELEY FEDERAL 40C-30-L (REV-A.0) PWP

Page 6 of 9

**REFERENCE WELLPATH IDENTIFICATION**

Operator	SRC ENERGY	Slot	SLOT#13 SEELEY FEDERAL 40C-30-L (1953'FNL & 1594'FEL, SEC.26)
Area	COLORADO	Well	SEELEY FEDERAL 40C-30-L
Field	WELD COUNTY (NAD83, TRUE NORTH)	Wellbore	SEELEY FEDERAL 40C-30-L PWB
Facility	SEC.26-T06N-R66W		

WELLPATH DATA (186 stations) † = interpolated/extrapolated station

MD [ft]	Inclination [°]	Azimuth [°]	TVD [ft]	Vert Sect [ft]	North [ft]	East [ft]	DLS [°/100ft]	Comments
11504.00†	90.156	90.168	7138.45	5638.57	-368.33	5629.64	0.00	
11604.00†	90.156	90.168	7138.18	5738.53	-368.63	5729.64	0.00	
11704.00†	90.156	90.168	7137.91	5838.48	-368.92	5829.64	0.00	
11804.00†	90.156	90.168	7137.64	5938.44	-369.21	5929.64	0.00	
11904.00†	90.156	90.168	7137.36	6038.40	-369.51	6029.64	0.00	
12004.00†	90.156	90.168	7137.09	6138.35	-369.80	6129.64	0.00	
12104.00†	90.156	90.168	7136.82	6238.31	-370.10	6229.64	0.00	
12204.00†	90.156	90.168	7136.55	6338.27	-370.39	6329.64	0.00	
12304.00†	90.156	90.168	7136.28	6438.23	-370.68	6429.64	0.00	
12404.00†	90.156	90.168	7136.00	6538.18	-370.98	6529.64	0.00	
12504.00†	90.156	90.168	7135.73	6638.14	-371.27	6629.63	0.00	
12604.00†	90.156	90.168	7135.46	6738.10	-371.57	6729.63	0.00	
12704.00†	90.156	90.168	7135.19	6838.05	-371.86	6829.63	0.00	
12804.00†	90.156	90.168	7134.92	6938.01	-372.15	6929.63	0.00	
12904.00†	90.156	90.168	7134.64	7037.97	-372.45	7029.63	0.00	
13004.00†	90.156	90.168	7134.37	7137.92	-372.74	7129.63	0.00	
13104.00†	90.156	90.168	7134.10	7237.88	-373.04	7229.63	0.00	
13204.00†	90.156	90.168	7133.83	7337.84	-373.33	7329.63	0.00	
13304.00†	90.156	90.168	7133.56	7437.80	-373.62	7429.63	0.00	
13404.00†	90.156	90.168	7133.29	7537.75	-373.92	7529.63	0.00	
13504.00†	90.156	90.168	7133.01	7637.71	-374.21	7629.63	0.00	
13604.00†	90.156	90.168	7132.74	7737.67	-374.51	7729.63	0.00	
13704.00†	90.156	90.168	7132.47	7837.62	-374.80	7829.63	0.00	
13804.00†	90.156	90.168	7132.20	7937.58	-375.09	7929.62	0.00	
13904.00†	90.156	90.168	7131.93	8037.54	-375.39	8029.62	0.00	
14004.00†	90.156	90.168	7131.65	8137.49	-375.68	8129.62	0.00	
14104.00†	90.156	90.168	7131.38	8237.45	-375.98	8229.62	0.00	
14204.00†	90.156	90.168	7131.11	8337.41	-376.27	8329.62	0.00	
14304.00†	90.156	90.168	7130.84	8437.37	-376.56	8429.62	0.00	
14404.00†	90.156	90.168	7130.57	8537.32	-376.86	8529.62	0.00	



SRC ENERGY

Planned Wellpath Report

SEELEY FEDERAL 40C-30-L (REV-A.0) PWP

Page 7 of 9

**REFERENCE WELLPATH IDENTIFICATION**

Operator	SRC ENERGY	Slot	SLOT#13 SEELEY FEDERAL 40C-30-L (1953'FNL & 1594'FEL, SEC.26)
Area	COLORADO	Well	SEELEY FEDERAL 40C-30-L
Field	WELD COUNTY (NAD83, TRUE NORTH)	Wellbore	SEELEY FEDERAL 40C-30-L PWB
Facility	SEC.26-T06N-R66W		

WELLPATH DATA (186 stations) † = interpolated/extrapolated station

MD [ft]	Inclination [°]	Azimuth [°]	TVD [ft]	Vert Sect [ft]	North [ft]	East [ft]	DLS [°/100ft]	Comments
14504.00†	90.156	90.168	7130.29	8637.28	-377.15	8629.62	0.00	
14604.00†	90.156	90.168	7130.02	8737.24	-377.45	8729.62	0.00	
14704.00†	90.156	90.168	7129.75	8837.19	-377.74	8829.62	0.00	
14804.00†	90.156	90.168	7129.48	8937.15	-378.03	8929.62	0.00	
14904.00†	90.156	90.168	7129.21	9037.11	-378.33	9029.62	0.00	
15004.00†	90.156	90.168	7128.93	9137.07	-378.62	9129.61	0.00	
15104.00†	90.156	90.168	7128.66	9237.02	-378.92	9229.61	0.00	
15204.00†	90.156	90.168	7128.39	9336.98	-379.21	9329.61	0.00	
15304.00†	90.156	90.168	7128.12	9436.94	-379.50	9429.61	0.00	
15404.00†	90.156	90.168	7127.85	9536.89	-379.80	9529.61	0.00	
15504.00†	90.156	90.168	7127.58	9636.85	-380.09	9629.61	0.00	
15604.00†	90.156	90.168	7127.30	9736.81	-380.39	9729.61	0.00	
15704.00†	90.156	90.168	7127.03	9836.76	-380.68	9829.61	0.00	
15804.00†	90.156	90.168	7126.76	9936.72	-380.97	9929.61	0.00	
15904.00†	90.156	90.168	7126.49	10036.68	-381.27	10029.61	0.00	
16004.00†	90.156	90.168	7126.22	10136.64	-381.56	10129.61	0.00	
16104.00†	90.156	90.168	7125.94	10236.59	-381.86	10229.61	0.00	
16204.00†	90.156	90.168	7125.67	10336.55	-382.15	10329.60	0.00	
16304.00†	90.156	90.168	7125.40	10436.51	-382.44	10429.60	0.00	
16404.00†	90.156	90.168	7125.13	10536.46	-382.74	10529.60	0.00	
16504.00†	90.156	90.168	7124.86	10636.42	-383.03	10629.60	0.00	
16604.00†	90.156	90.168	7124.58	10736.38	-383.33	10729.60	0.00	
16704.00†	90.156	90.168	7124.31	10836.34	-383.62	10829.60	0.00	
16804.00†	90.156	90.168	7124.04	10936.29	-383.91	10929.60	0.00	
16904.00†	90.156	90.168	7123.77	11036.25	-384.21	11029.60	0.00	
17004.00†	90.156	90.168	7123.50	11136.21	-384.50	11129.60	0.00	
17104.00†	90.156	90.168	7123.22	11236.16	-384.80	11229.60	0.00	
17204.00†	90.156	90.168	7122.95	11336.12	-385.09	11329.60	0.00	
17304.00†	90.156	90.168	7122.68	11436.08	-385.38	11429.60	0.00	
17404.00†	90.156	90.168	7122.41	11536.03	-385.68	11529.60	0.00	



SRC ENERGY

Planned Wellpath Report

SEELEY FEDERAL 40C-30-L (REV-A.0) PWP

Page 8 of 9

**REFERENCE WELLPATH IDENTIFICATION**

Operator	SRC ENERGY	Slot	SLOT#13 SEELEY FEDERAL 40C-30-L (1953'FNL & 1594'FEL, SEC.26)
Area	COLORADO	Well	SEELEY FEDERAL 40C-30-L
Field	WELD COUNTY (NAD83,TRUE NORTH)	Wellbore	SEELEY FEDERAL 40C-30-L PWB
Facility	SEC.26-T06N-R66W		

WELLPATH DATA (186 stations) † = interpolated/extrapolated station

MD [ft]	Inclination [°]	Azimuth [°]	TVD [ft]	Vert Sect [ft]	North [ft]	East [ft]	DLS [°/100ft]	Comments
17504.00†	90.156	90.168	7122.14	11635.99	-385.97	11629.59	0.00	
17604.00†	90.156	90.168	7121.87	11735.95	-386.27	11729.59	0.00	
17704.00†	90.156	90.168	7121.59	11835.91	-386.56	11829.59	0.00	
17804.00†	90.156	90.168	7121.32	11935.86	-386.85	11929.59	0.00	
17904.00†	90.156	90.168	7121.05	12035.82	-387.15	12029.59	0.00	
17922.28	90.156	90.168	7121.00 ²	12054.09	-387.20	12047.87	0.00	End of Tangent (XS)

HOLE & CASING SECTIONS

- Ref Wellbore: SEELEY FEDERAL 40C-30-L PWB Ref Wellpath: SEELEY FEDERAL 40C-30-L (REV-A.0) PWP

String/Diameter	Start MD [ft]	End MD [ft]	Interval [ft]	Start TVD [ft]	End TVD [ft]	Start N/S [ft]	Start E/W [ft]	End N/S [ft]	End E/W [ft]
13.5in Open Hole	4.00	1750.00	1746.00	4.00	1730.31	0.00	0.00	-62.48	214.34
9.625in Casing Surface	4.00	1750.00	1746.00	4.00	1730.31	0.00	0.00	-62.48	214.34
8.5in Open Hole	1750.00	17922.28	16172.28	1730.31	7121.00	-62.48	214.34	-387.20	12047.87



Planned Wellpath Report

SEELEY FEDERAL 40C-30-L (REV-A.0) PWP

Page 9 of 9



REFERENCE WELLPATH IDENTIFICATION			
Operator	SRC ENERGY	Slot	SLOT#13 SEELEY FEDERAL 40C-30-L (1953'FNL & 1594'FEL, SEC.26)
Area	COLORADO	Well	SEELEY FEDERAL 40C-30-L
Field	WELD COUNTY (NAD83, TRUE NORTH)	Wellbore	SEELEY FEDERAL 40C-30-L PWB
Facility	SEC.26-T06N-R66W		

TARGETS									
Name	MD [ft]	TVD [ft]	North [ft]	East [ft]	Grid East [US ft]	Grid North [US ft]	Latitude	Longitude	Shape
EAST HALF OF SEC.02-T05N-R66W		-22.00	240.14	1.93	3211308.44	1412009.18	40°27'42.779"N	104°44'26.117"W	polygon
EAST HALF OF SEC.26-T06N-R66W		-22.00	240.14	1.93	3211308.44	1412009.18	40°27'42.779"N	104°44'26.117"W	polygon
EAST HALF OF SEC.35-T06N-R66W		-22.00	240.14	1.93	3211308.44	1412009.18	40°27'42.779"N	104°44'26.117"W	polygon
SEC.25-T06N-R66W		-22.00	240.14	1.93	3211308.44	1412009.18	40°27'42.779"N	104°44'26.117"W	polygon
SEC.30-T06N-R65W		-22.00	240.14	1.93	3211308.44	1412009.18	40°27'42.779"N	104°44'26.117"W	polygon
SOUTH HALF OF SEC.19-T06N-R65W		-22.00	240.14	1.93	3211308.44	1412009.18	40°27'42.779"N	104°44'26.117"W	polygon
SOUTH HALF OF SEC.24-T06N-R66W		-22.00	240.14	1.93	3211308.44	1412009.18	40°27'42.779"N	104°44'26.117"W	polygon
2) SEELEY FEDERAL 40C-30-L BHL ON PLAT (2305'FNL & 150'FEL, SEC.30)	17922.28	7121.00	-387.20	12047.87	3223358.85	1411485.04	40°27'36.551"N	104°41'50.280"W	circle
1) SEELEY FEDERAL 40C-30-L TOP OF PROD ON PLAT (2308'FNL & 150'FWL, SEC.25)	7624.39	7149.00	-356.93	1750.06	3213061.55	1411427.12	40°27'36.878"N	104°44'03.502"W	circle

SURVEY PROGRAM -				
Ref Wellbore: SEELEY FEDERAL 40C-30-L PWB		Ref Wellpath: SEELEY FEDERAL 40C-30-L (REV-A.0) PWP		
Start MD [ft]	End MD [ft]	Positional Uncertainty Model	Log Name/Comment	Wellbore
4.00	1750.00	BHI NaviTrak (Rotating+Axial Corr)		SEELEY FEDERAL 40C-30-L PWB
1750.00	17922.28	BHI AutoTrak Curve (IFR1, Short)		SEELEY FEDERAL 40C-30-L PWB