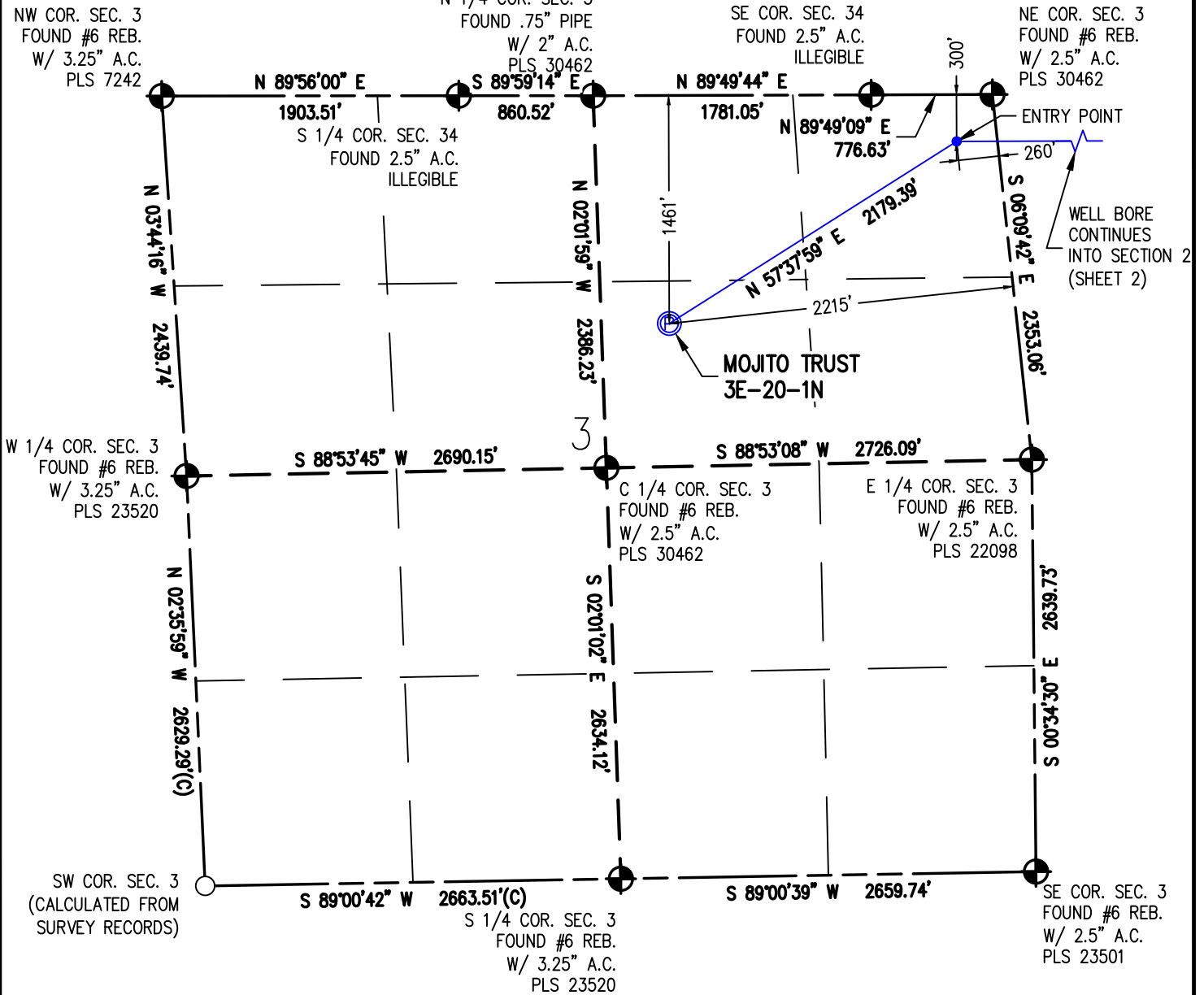


WELL LOCATION PLAT MOJITO TRUST 3E-20-1N

SW1/4 NE1/4 SEC. 3, T4N, R68W, 6TH P.M.



I HEREBY CERTIFY THAT THIS WELL LOCATION CERTIFICATE WAS PREPARED BY ME, OR UNDER MY DIRECT SUPERVISION, THAT THE FIELD WORK WAS COMPLETED ON 4/3/2018, THAT IT IS NOT A LAND SURVEY PLAT OR AN IMPROVEMENT SURVEY PLAT, AND THAT IT IS NOT TO BE RELED UPON FOR ESTABLISHMENT OF FENCE, BUILDING OR OTHER FUTURE IMPROVEMENT LINES.

AARON A. DEMO
Professional Land Surveyor Registration No. 38285
State of Colorado
FOR AND ON BEHALF OF BASELINE ENGINEERING CORP.



Scale 1" = 1000' ft

SURFACE LOCATION
SEC. 3, T4N, R68W
GROUND ELEVATION = 5048.6'
PDOP = 1.4
LATITUDE = 40.345183°
LONGITUDE = -104.988135°
1461' FNL, 2215' FEL
ENTRY POINT LOCATION
SEC. 3, T4N, R68W
LATITUDE = 40.348356°
LONGITUDE = -104.981507°
300' FNL, 260' FEL
BOTTOM HOLE LOCATION
SEC. 1, T4N, R68W
LATITUDE = 40.348286°
LONGITUDE = -104.945005°
300' FNL, 460' FEL

- NOTES:
1. INDICATES SECTION CORNER
 2. INDICATES CALCULATED CORNER
 3. (C) INDICATES CALCULATED DIMENSION
 4. ELEVATION BASED ON NAVD88 (GEOID12B)
 5. BEARINGS DERIVED FROM COLORADO COORDINATE SYSTEM OF 1983 NORTH ZONE.
 6. OPERATOR: TRAVIS WINNICKI
 7. IMPROVEMENTS: SEE LOCATION DRAWING FOR ALL VISIBLE IMPROVEMENTS WITHIN 500' OF DISTURBED AREA.
 8. WELL FOOTAGES ARE MEASURED AT RIGHT ANGLES TO THE SECTION LINES.

NEAREST CULTURAL ITEMS:

BUILDING: 815' NW
BUILDING UNIT: 1231' SE
HIGH OCCUPANCY BUILDING UNIT: 1169' S
DESIGNATED OUTSIDE ACTIVITY AREA: 5280'+
PUBLIC ROAD: WELD COUNTY ROAD 14 1456' N
ABOVE GROUND UTILITY: 769' N
RAILROAD: 5280'+
PROPERTY LINE: 416' S
SURFACE USE: IRRIGATED CROPLAND.
NEAREST EXISTING WELL JESSER USX S 03-06:1316' SW



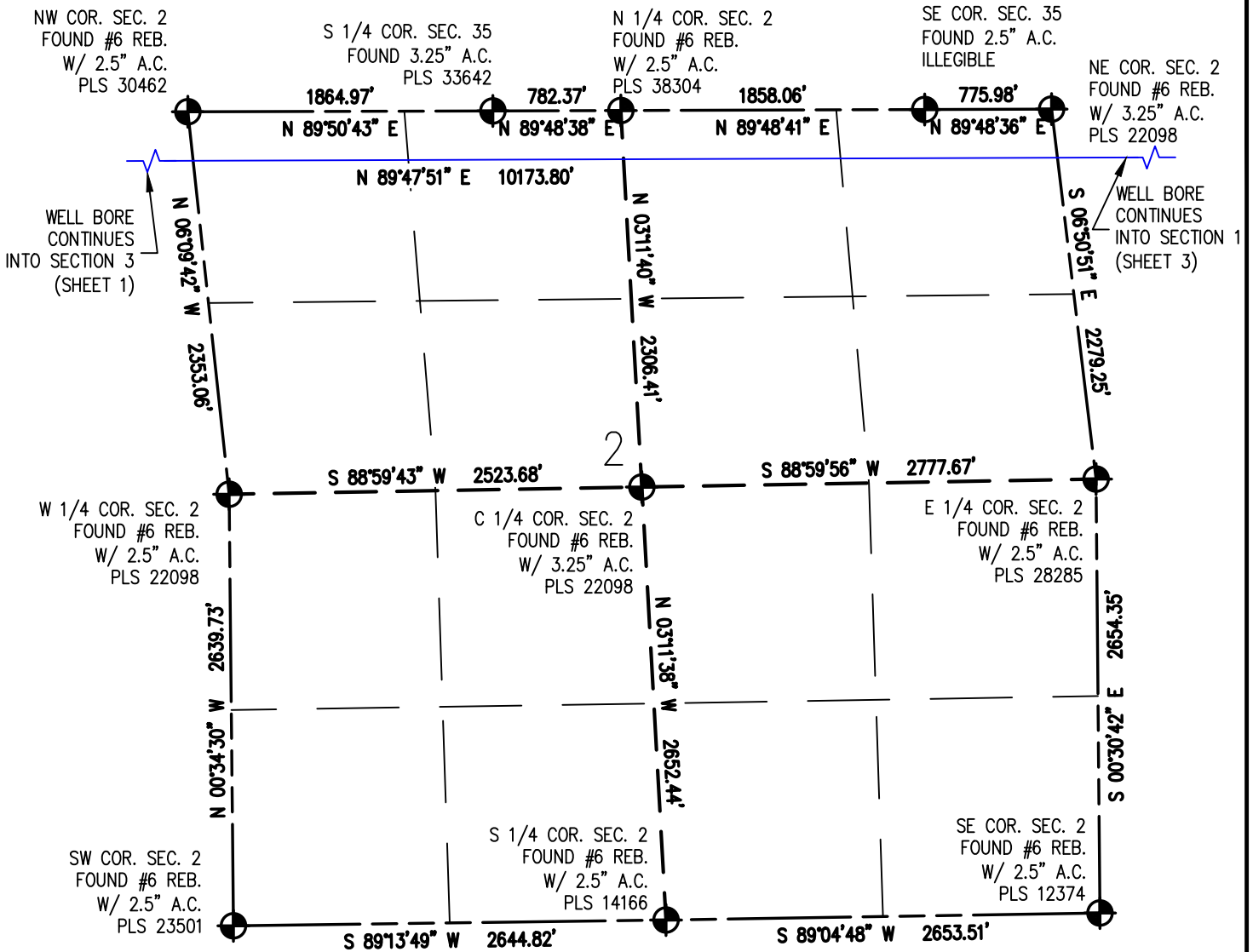
DRAWN BY	JMH	CHECKED BY	AAD
INITIAL SUBMITTAL	5/4/2018		
REVISED	7/12/2018		
DRAWING SIZE	8.5" X 11"		
JOB NO.	EXT04N68W03-02		
SHEET	1 OF 3		

BASELINE
Engineering - Planning - Surveying
4007 S. LINCOLN AVENUE, SUITE 405 • LOVELAND, COLORADO 80537
P: 970.353.7600 • F: 970.353.7601 • www.baselinecorp.com

M:\co - Well Head Staking\EXT04N68W03-01 (COTO TRUST)\Drawings\EXT04N68W03-01(BURRITO) - 2.dwg, 7/13/2018 1:16:32 PM, Joyme Hobin

WELL LOCATION PLAT MOJITO TRUST 3E-20-1N

SW1/4 NE1/4 SEC. 3, T4N, R68W, 6TH P.M.



I HEREBY CERTIFY THAT THIS WELL LOCATION CERTIFICATE WAS PREPARED BY ME, OR UNDER MY DIRECT SUPERVISION, THAT THE FIELD WORK WAS COMPLETED ON 4/3/2018, THAT IT IS NOT A LAND SURVEY PLAT OR AN IMPROVEMENT SURVEY PLAT, AND THAT IT IS NOT TO BE RELIED UPON FOR ESTABLISHMENT OF FENCE, BUILDING OR OTHER FUTURE IMPROVEMENT LINES.

AARON A. DEMO
Professional Land Surveyor Registration No. 38285
State of Colorado
FOR AND ON BEHALF OF BASELINE ENGINEERING CORP.

N

0 1000'
Scale 1" = 1000' ft

SURFACE LOCATION
SEC. 3, T4N, R68W
GROUND ELEVATION = 5048.6'
PDOP = 1.4
LATITUDE = 40.345183°
LONGITUDE = -104.988135°
1461' FNL, 2215' FEL
ENTRY POINT LOCATION
SEC. 3, T4N, R68W
LATITUDE = 40.348356°
LONGITUDE = -104.981507°
300' FNL, 260' FEL
BOTTOM HOLE LOCATION
SEC. 1, T4N, R68W
LATITUDE = 40.348286°
LONGITUDE = -104.945005°
300' FNL, 460' FEL

NOTES:

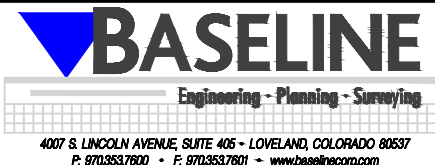
- INDICATES SECTION CORNER
- INDICATES CALCULATED CORNER
- (C) INDICATES CALCULATED DIMENSION
- ELEVATION BASED ON NAVD88 (GEOID12B)
- BEARINGS DERIVED FROM COLORADO COORDINATE SYSTEM OF 1983 NORTH ZONE.
- OPERATOR: TRAVIS WINNICKI
- IMPROVEMENTS: SEE LOCATION DRAWING FOR ALL VISIBLE IMPROVEMENTS WITHIN 500' OF DISTURBED AREA.
- WELL FOOTAGES ARE MEASURED AT RIGHT ANGLES TO THE SECTION LINES.

NEAREST CULTURAL ITEMS:

BUILDING: 815' NW
BUILDING UNIT: 1231' SE
HIGH OCCUPANCY BUILDING UNIT: 1169' S
DESIGNATED OUTSIDE ACTIVITY AREA: 5280'+
PUBLIC ROAD: WELD COUNTY ROAD 14 1456' N
ABOVE GROUND UTILITY: 769' N
RAILROAD: 5280'+
PROPERTY LINE: 416' S
SURFACE USE: IRRIGATED CROPLAND.
NEAREST EXISTING WELL JESSER USX S 03-06:1316' SW



DRAWN BY	JMH	CHECKED BY	AAD
INITIAL SUBMITTAL	5/4/2018		
REVISED	7/12/2018		
DRAWING SIZE	8.5" X 11"		
JOB NO.	EXT04N68W03-02		
SHEET	2 OF 3		



SW1/4 NE1/4 SEC. 3, T4N, R68W, 6TH P.M.

SE COR. SEC. 36
FOUND #6 REB.
W/ 2.5" A.C.
PLS 17662

NE COR. SEC. 1
FOUND #6 REB.
W/ 2.5" A.C.
PLS 23501

N 1/4 COR. SEC. 1
FOUND #6 REB.
W/ 3.25" A.C.
PLS 22098

BOTTOM HOLE

C 1/4 COR. SEC. 1
(CALCULATED FROM
SURVEY RECORDS)

E 1/4 COR. SEC. 1
FOUND #6 REB.
W/ 2.5" A.C.
PLS 5112

S 1/4 COR. SEC. 1
FOUND #6 REB.
W/ 2.5" A.C.
PLS 12374

SE COR. SEC. 1
FOUND #6 REB.
W/ 2" A.C.
PLS 23500

SURFACE LOCATION
SEC. 3, T4N, R68W
GROUND ELEVATION = 5048.6'
PDOP = 1.4


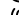
LATITUDE = 40.345183°
LONGITUDE = -104.988135°
1461' FNL, 2215' FEL

ENTRY POINT LOCATION
SEC. 3, T4N, R68W
LATITUDE = 40.348356°

LATITUDE = 40.548330
 LONGITUDE = -104.981507*
 300' FNL, 260' FEL
 BOTTOM HOLE LOCATION

BOTTOM HOLE LOCATION
SEC. 1, T4N, R68W
LATITUDE = 40.348286°
LONGITUDE = -104.945005°
300' FNL 460' FFL

NOTES:

1.  INDICATES SECTION CORNER
2.  INDICATES CALCULATED CORNER
3. (C) INDICATES CALCULATED DIMENSION
4. ELEVATION BASED ON NAVD88 (GEOID12B)
5. BEARINGS DERIVED FROM COLORADO COORDINATE SYSTEM OF 1983 NORTH ZONE.
6. OPERATOR: TRAVIS WINNICKI
7. IMPROVEMENTS: SEE LOCATION DRAWING FOR ALL VISIBLE IMPROVEMENTS WITHIN 500' OF DISTURBED AREA.
8. WELL FOOTAGES ARE MEASURED AT RIGHT ANGLES TO THE SECTION LINES.

AARON A. DEMO
Professional Land Surveyor Registration No. 38285
State of Colorado
FOR AND ON BEHALF OF BASELINE ENGINEERING C


NEAREST CULTURAL ITEMS:

BUILDING: 815' NW
BUILDING UNIT: 1231' SE
HIGH OCCUPANCY BUILDING: 1169' S
DESIGNATED OUTSIDE ACTIVITY AREA: 5280'+
PUBLIC ROAD: WELD COUNTY ROAD 14 1456' N
ABOVE GROUND UTILITY: 769' N
RAILROAD: 5280'+
PROPERTY LINE: 416' S
SURFACE USE: IRRIGATED CROPLAND.
NEAREST EXISTING WELL JESSER USX 3 03-06:1316' SW



The logo for Extraction Oil & Gas features the word "EXTRACTION" in a large, bold, blue sans-serif font. Above the letter "A" is a stylized black oil derrick with radiating lines representing light or energy. Below the word "EXTRACTION" is a thin black horizontal line, and underneath that, the words "Oil & Gas" are written in a smaller, blue, cursive-style font.

DRAWN BY JMH	CHECKED BY AAD
INITIAL SUBMITTAL	5/4/2018
REVISED	7/12/2018
DRAWING SIZE	8.5" X 11"
JOB NO.	EXT04N68W03-02
SHEET 3 OF 3	



BASELINE
Engineering - Planning - Surveying
4007 S. LINCOLN AVENUE, SUITE 406 • LOVELAND, COLORADO 80537
P. 970.353.7600 • F. 970.353.7601 • www.baselinecom.com