

August 21, 2018

Colorado Oil and Gas Conservation Commission
The Chancery Building
1120 Lincoln Street, Suite 801
Denver, CO 80203
Attn: Ms. Julie Murphy, Director

RE: **30 Day Certification Letter – 318A.e**
Wells Ranch AE29-660 (Doc No. 401636169)
PSU: T6N-R62W, 6th P.M., Sec. 27: SW/4NW/4, Sec. 28: S/2N/2, Sec. 29: S/2N/2, Sec. 30:
SE/4NE/4
SHL: Section 29: SWNW, T6N, R62W, 6th P.M.
Weld County, Colorado

Dear Director,

Noble Energy, Inc. ("NEI") is planning to drill the captioned boundary well in accordance with the provisions of COGCC Rule 318A.e.

NEI's proposed wellbore spacing unit, captured in the above section, is for the Niobrara formation. NEI owns 100% of the mineral operating rights within the proposed wellbore spacing unit and therefore NEI hereby attests that no notice letters are required under the COGCC Rule 318A.e(5).

Enclosed is a copy of the document to assist you in your review and approval of NEI's proposed APD for the captioned well.

- Plat illustrating proposed wellbore spacing unit.

If you have any questions or issues regarding this permit, please contact me at 281-193-1940 or brittany.mcfadden@nblenergy.com.

Respectfully,



Regulatory Analyst
Noble Energy Inc.

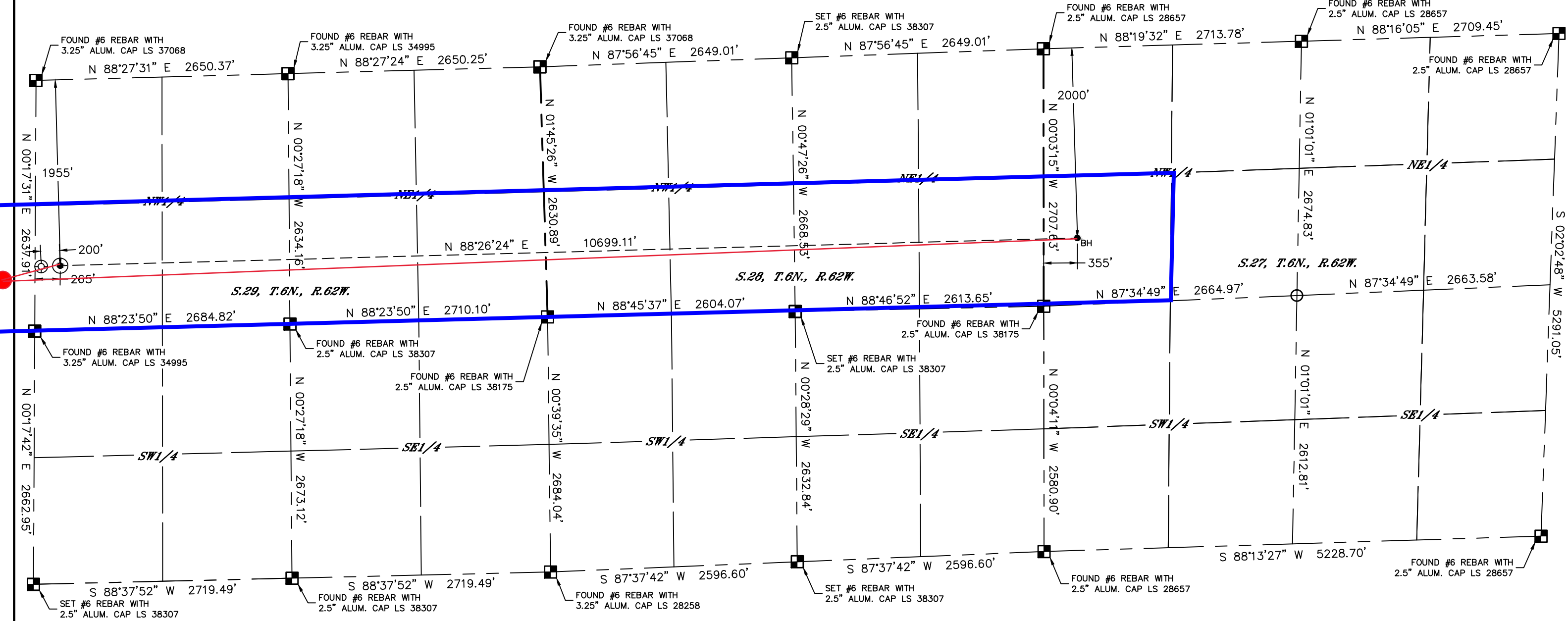


Lat40°, Inc. 6250 W. 10th Street, Unit 2, Greeley, CO 970-515-5294

WELL LOCATION CERTIFICATE

WELLS RANCH AE29-660

SECTION: 29
TOWNSHIP: 6N
RANGE: 62W
6TH. P.M.
WELD COUNTY, CO



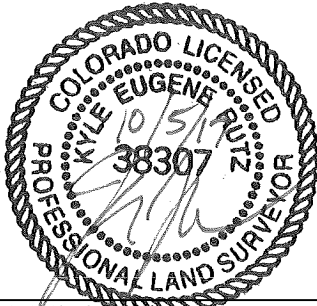
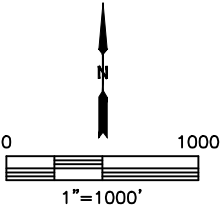
CLIENT: NOBLE ENERGY, INC.				LANDMAN: GREG WILSON			
INSTRUMENT OPERATOR: JAKE STILLE				SURVEY DATE: 8/25/2017		SURFACE USE: RANGELAND	
SHL FOOTAGE		SHL LAT°	SHL LONG°	SHL PDOP	SHL ELEV (FT.)	SHL 1/4/1/4	SHL S-T-R
1955	FNL	265	FWL	40.45960	-104.35536	1.8	4768
						SWNW	29-6-62

BHL FOOTAGE		BHL LAT°	BHL LONG°	BHL S-T-R
2000	FNL	355	FWL	40.46001
				-104.31692
				27-6-62

TPZ: 2000' FNL, 120' FEL
Sec 30
(Hand drawn)

NOTE:
1) Bearings shown are Grid Bearings of the Colorado State Plane Coordinate System, North Zone, North American Datum 1983. The lineal dimensions as contained herein are based upon the "U.S. Survey Foot."
2) Distances to section lines measured at 90 degrees from said section lines.
3) Ground elevations are based on an observed GPS elevation (NAVD 1988 DATUM).
4) Latitude and Longitude shown are (NAD 83 DATUM).
5) IMPROVEMENTS: See LOCATION DRAWING for all visible improvements within 500' of oil and gas location.
6) This map does not represent a boundary survey.

- LEGEND
- = ALIQUOT MONUMENT AS DESCRIBED
 - = CALCULATED POSITION
 - = SURFACE HOLE LOCATION (SHL)
 - ▲ = ENTRY POINT LOCATION (EP)
 - BH = BOTTOM HOLE LOCATION (BHL)
 - ⊕ = EXISTING WELL
 - ⊖ = ABANDONED WELL



Kyle E. Rutz—On behalf of Lat40°, Inc.
Colorado Licensed Professional Land Surveyor No. 38307
DATE: 10/5/2017
PROJECT#: 2017064