

SRC ENERGY

Location: COLORADO Slot: SLOT#35 CHALK 9N-35C-M (2331'FNL & 2091'FEL, SEC.26)
Field: WELD COUNTY (NAD83, TRUE NORTH) Well: CHALK 9N-35C-M
Facility: SEC.26-T06N-R66W Wellbore: CHALK 9N-35C-M PWB

Plot reference wellpath is CHALK 9N-35C-M (REV-8.0) PWP	Grid System: NAD83 / Lambert Colorado SP, Northern Zone (501), US feet
True vertical depths are referenced to PROPETRO 12 (4) (RKB)	* = Wellpath was transformed from a different geodetic datum
Measured depths are referenced to PROPETRO 12 (4) (RKB)	North Reference: True north
PROPETRO 12 (4) (RKB) to Mean Sea Level: 4700 feet	Scale: True distance
Mean Sea Level to Mud line (At Slot: SLOT#35 CHALK 9N-35C-M (2331'FNL & 2091'FEL, SEC.26)): 0 feet	Depths are in feet
Coordinates are in feet referenced to Slot	Created by: doddanna on 2018-08-08
	Database: WellArchitectDB2

Location Information

Facility Name				Grid East (US ft)	Grid North (US ft)	Latitude	Longitude
SEC.26-T06N-R66W				3211308.441	1412009.161	40°27'42.779"N	104°44'26.117"W
Slot	Local N (ft)	Local E (ft)		Grid East (US ft)	Grid North (US ft)	Latitude	Longitude
SLOT#35 CHALK 9N-35C-M (2331'FNL & 2091'FEL, SEC.26)	-618.22	-492.78		3210620.996	1411366.788	40°27'36.670"N	104°44'32.492"W
PROPETRO 12 (4) (RKB) to Mud line (At Slot: SLOT#35 CHALK 9N-35C-M (2331'FNL & 2091'FEL, SEC.26))				4700ft			
Mean Sea Level to Mud line (At Slot: SLOT#35 CHALK 9N-35C-M (2331'FNL & 2091'FEL, SEC.26))				0ft			
PROPETRO 12 (4) (RKB) to Mean Sea Level				4700ft			

Survey Program

Start MD (ft)	End MD (ft)	Tool	Model	Log Name/Comment	Wellbore
4.00	1750.00	BHI NavTrak	BHI NavTrak (Rotating+Axial Corr)		CHALK 9N-35C-M PWB
1750.00	13686.14	BHI AutoTrak Curve	BHI AutoTrak Curve (MagCAD+IFR1, Short spacing)		CHALK 9N-35C-M PWB

Well Profile Data

Design Comment	MD (ft)	Inc (°)	Az (°)	TVD (ft)	Local N (ft)	Local E (ft)	DLS (°/100ft)	VS (ft)
Tie On	4.00	0.000	95.930	4.00	0.00	0.00	0.00	0.00
End of Tangent	300.00	0.000	95.930	300.00	0.00	0.00	0.00	0.00
End of Build (XS)	891.05	11.821	95.930	886.86	-6.28	60.43	2.00	16.87
End of Tangent (XS)	6553.31	11.821	95.930	6429.05	-126.12	1214.16	0.00	339.02
End of 3D Arc (XS)	7540.19	89.858	180.838	7041.00	-762.88	1332.11	9.00	986.60
End of Tangent (XS)	13585.94	89.858	180.838	7056.00	-6807.97	1243.64	0.00	6920.60
End of 3D Arc (J)	13593.70	90.006	180.791	7056.01	-6815.73	1243.53	2.00	6928.22
End of Tangent (J)	13686.14	90.006	180.791	7056.00	-6908.15	1242.25	0.00	7018.96

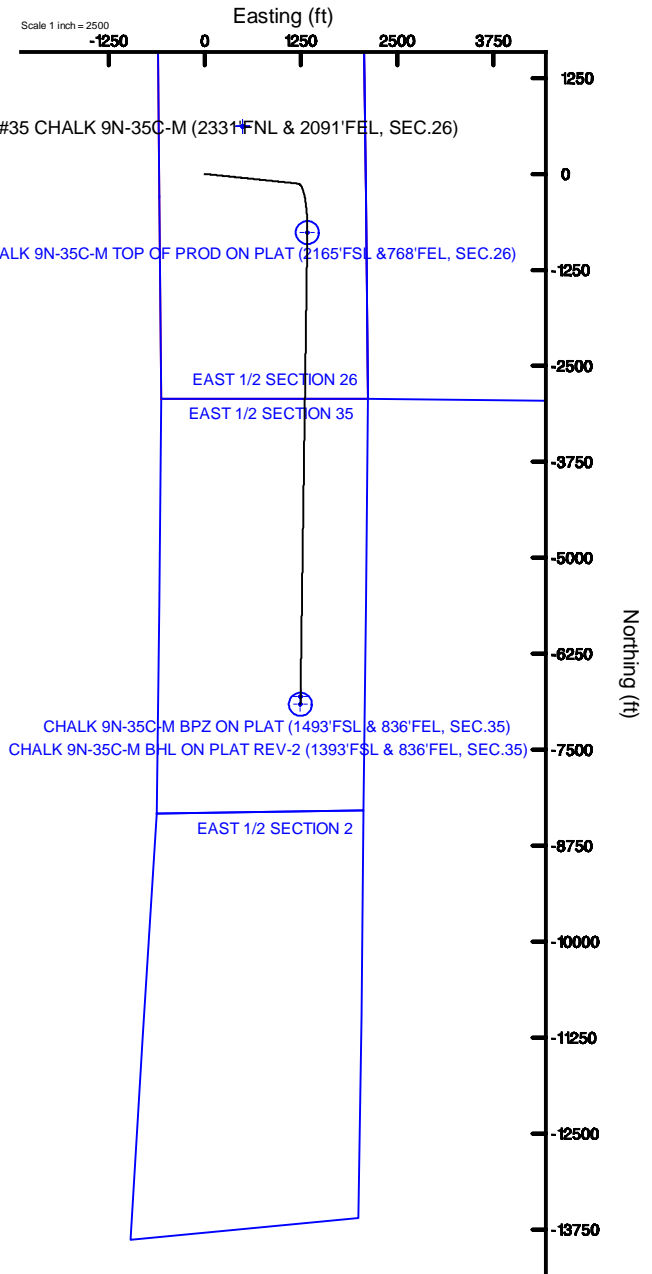
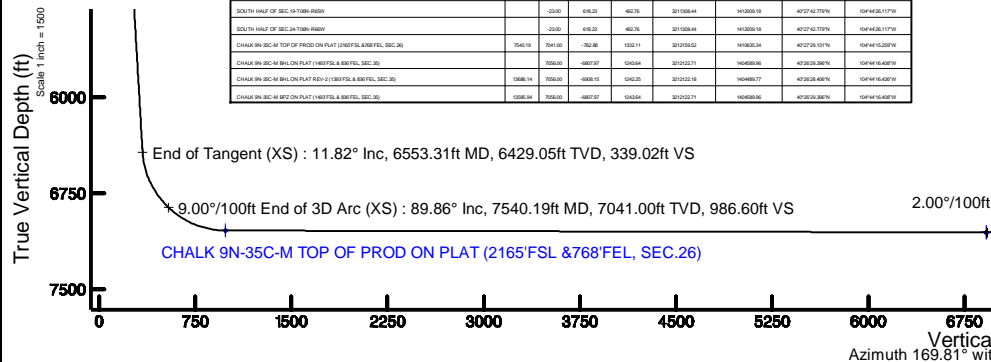
Hole and Casing Sections

Name	Start MD (ft)	End MD (ft)	Interval (ft)	Start TVD (ft)	End TVD (ft)	Start Local N (ft)	Start Local E (ft)	End Local N (ft)	End Local E (ft)	Wellbore
13.5in Open Hole	4.00	1750.00	1746.00	4.00	1727.60	0.00	0.00	-24.46	235.45	CHALK 9N-35C-M PWB
9.625in Casing Surface	4.00	1750.00	1746.00	4.00	1727.60	0.00	0.00	-24.46	235.45	CHALK 9N-35C-M PWB
8.5in Open Hole	1750.00	13686.14	11936.14	1727.60	7056.00	-24.46	235.45	-6908.15	1242.25	CHALK 9N-35C-M PWB

Targets

Targets

Name	MD (ft)	TVD (ft)	Local N (ft)	Local E (ft)	Grid East (US ft)	Grid North (US ft)	Latitude	Longitude
EAST HALF OF SEC.26-T06N-R66W	2300	618.22	60.76	3211058.44	1412009.16	40°27'42.779"N	104°44'26.117"W	
EAST HALF OF SEC.26-T06N-R66W	2300	618.22	60.76	3211058.44	1412009.16	40°27'42.779"N	104°44'26.117"W	
EAST HALF OF SEC.26-T06N-R66W	2300	618.22	60.76	3211058.44	1412009.16	40°27'42.779"N	104°44'26.117"W	
SEC.26-T06N-R66W	2300	618.22	60.76	3211058.44	1412009.16	40°27'42.779"N	104°44'26.117"W	
SEC.26-T06N-R66W	2300	618.22	60.76	3211058.44	1412009.16	40°27'42.779"N	104°44'26.117"W	
SOUTH HALF OF SEC.26-T06N-R66W	2300	618.22	60.76	3211058.44	1412009.16	40°27'42.779"N	104°44'26.117"W	
SOUTH HALF OF SEC.26-T06N-R66W	2300	618.22	60.76	3211058.44	1412009.16	40°27'42.779"N	104°44'26.117"W	
CHALK 9N-35C-M TOP OF PROD ON PLAT (2165'FSL & 768'FEL, SEC.26)	2165	7049.10	-7628.88	3210511.11	1410952.52	40°26'58.152"N	104°44'32.959"W	
CHALK 9N-35C-M BHL ON PLAT (1493'FSL & 836'FEL, SEC.35)	1493	7056.00	-6815.73	3210620.99	1411366.79	40°27'36.670"N	104°44'32.492"W	
CHALK 9N-35C-M BHL ON PLAT REV-2 (1393'FSL & 836'FEL, SEC.35)	1393	7056.01	-6815.73	3210620.99	1411366.79	40°27'36.670"N	104°44'32.492"W	
CHALK 9N-35C-M BHL ON PLAT (1493'FSL & 836'FEL, SEC.35)	1493	7056.00	-6815.73	3210620.99	1411366.79	40°27'36.670"N	104°44'32.492"W	



BIGM (1900.0 to 2019.0) Dip: 86.86° Field: 52318.8 mT
Magnetic North is 8.28 degrees East of True North (at 9/7/2018)
To correct azimuth from Magnetic to True add 8.28 degrees

CHALK_9N-35C-M__REV-B.0__PWP.las

~VERSION INFORMATION

VERS. 2.0 : CWLS LOG ASCII STANDARD-VERSION 2.0

WRAP. NO : ASCII DATA SECTION CONTAINS ONE ROW PER WELLPATH STATION

~WELL INFORMATION

#MNEM	.UNITS	DATA	:DESCRIPTION
#----	.-----	----	:-----
STRT	.ft	0.00	:START MD
STOP	.ft	13686.14	:STOP MD
STEP	.ft	0.0	:STEP (non-uniform increment)
NULL	.	-999.99	:NULL
COMP	.	SRC ENERGY	:OPERATOR
WELL	.	CHALK 9N-35C-M	:WELL
FLD	.	WELD COUNTY (NAD83,TRUE NORTH)	:FIELD
LOC	.	COLORADO	:AREA (aka: Location)
CNTY	.	N/A	:COUNTY
STAT	.	N/A	:STATE
CTRY	.	N/A	:COUNTRY
SRVC	.	Baker Hughes	:CONTRACTOR
DATE	.	04/25/2018	:LOG REV DATE
API	.		:API NUMBER

~OTHER INFORMATION

#Software: WellArchitect(R) Version 5.0

#MNEM	.UNITS	DATA	:DESCRIPTION
#----	.-----	----	:-----
WPTYPE	.	PLANNED WELLPATH	:WELLPATH TYPE
FACILITY	.	SEC.26-T06N-R66W	:FACILITY
SLOT	.	SLOT#35 CHALK 9N-35C-M (2331'FNL & 2091'FEL, SEC.26):SLOT	
WELLBORE	.	CHALK 9N-35C-M PWB	:WELLBORE
WELLPATH	.	CHALK 9N-35C-M (REV-B.0) PWP	:WELLPATH
MDREFPT	.	PROPETRO 12 (4') (RKB)	:MD REFERENCE POINT
TVDREFPT	.	PROPETRO 12 (4') (RKB)	:TVD REFERENCE POINT
LCLREFPT	.	Slot	:LOCAL COORDINATE REFERENCE PT

CHALK_9N-35C-M__REV-B.0__PWP.las

VSAZIMUTH.deg	169.81	:VERTICAL SECTION AZIMUTH
VSORIGN .ft	0.00	:VERTICAL SECTION ORIGIN NORTH
VSORIGE .ft	0.00	:VERTICAL SECTION ORIGIN EAST

~CURVE (WELLPATH) INFORMATION

#MNEM	.UNITS	:DESCRIPTION
#----	.-----	:-----
DEPT	.ft	:MEASURED DEPTH
INC	.deg	:INCLINATION
AZI	.deg	:AZIMUTH
TVD	.ft	:TRUE VERTICAL DEPTH
SECT	.ft	:CROSS SECTION (CURTAIN/VERTICAL)
LOCALN	.ft	:LOCAL NORTH
LOCALE	.ft	:LOCAL EAST
LAT	.deg	:LATITUDE
LONG	.deg	:LONGITUDE
DLS	.deg/100ft	:DOGLEG SEVERITY

~ASCII DATA

0.00	0.00	95.93	0.00	0.00	0.00	0.00	40.4601861	-104.7423589	0.00
4.00	0.00	95.93	4.00	0.00	0.00	0.00	40.4601861	-104.7423589	0.00
104.00	0.00	95.93	104.00	0.00	0.00	0.00	40.4601861	-104.7423589	0.00
204.00	0.00	95.93	204.00	0.00	0.00	0.00	40.4601861	-104.7423589	0.00
300.00	0.00	95.93	300.00	0.00	0.00	0.00	40.4601861	-104.7423589	0.00
304.00	0.08	95.93	304.00	0.00	0.00	0.00	40.4601861	-104.7423589	2.00
404.00	2.08	95.93	403.98	0.52	-0.20	1.88	40.4601856	-104.7423521	2.00
504.00	4.08	95.93	503.83	2.02	-0.75	7.22	40.4601841	-104.7423329	2.00
604.00	6.08	95.93	603.43	4.48	-1.66	16.03	40.4601815	-104.7423013	2.00
704.00	8.08	95.93	702.66	7.90	-2.94	28.29	40.4601780	-104.7422572	2.00
804.00	10.08	95.93	801.40	12.28	-4.57	43.98	40.4601736	-104.7422008	2.00
891.05	11.82	95.93	886.86	16.87	-6.28	60.43	40.4601689	-104.7421417	2.00
904.00	11.82	95.93	899.54	17.61	-6.55	63.07	40.4601681	-104.7421322	0.00
1004.00	11.82	95.93	997.42	23.30	-8.67	83.44	40.4601623	-104.7420590	0.00
1104.00	11.82	95.93	1095.30	28.99	-10.78	103.82	40.4601565	-104.7419858	0.00

CHALK_9N-35C-M__REV-B.0__PWP.las

1204.00	11.82	95.93	1193.18	34.68	-12.90	124.20	40.4601507	-104.7419126	0.00
1304.00	11.82	95.93	1291.06	40.37	-15.02	144.57	40.4601449	-104.7418394	0.00
1404.00	11.82	95.93	1388.94	46.06	-17.13	164.95	40.4601391	-104.7417661	0.00
1504.00	11.82	95.93	1486.82	51.75	-19.25	185.32	40.4601333	-104.7416929	0.00
1604.00	11.82	95.93	1584.70	57.44	-21.37	205.70	40.4601275	-104.7416197	0.00
1704.00	11.82	95.93	1682.58	63.12	-23.48	226.08	40.4601216	-104.7415465	0.00
1804.00	11.82	95.93	1780.45	68.81	-25.60	246.45	40.4601158	-104.7414732	0.00
1904.00	11.82	95.93	1878.33	74.50	-27.72	266.83	40.4601100	-104.7414000	0.00
2004.00	11.82	95.93	1976.21	80.19	-29.83	287.20	40.4601042	-104.7413268	0.00
2104.00	11.82	95.93	2074.09	85.88	-31.95	307.58	40.4600984	-104.7412536	0.00
2204.00	11.82	95.93	2171.97	91.57	-34.07	327.95	40.4600926	-104.7411804	0.00
2304.00	11.82	95.93	2269.85	97.26	-36.18	348.33	40.4600868	-104.7411071	0.00
2404.00	11.82	95.93	2367.73	102.95	-38.30	368.71	40.4600810	-104.7410339	0.00
2504.00	11.82	95.93	2465.61	108.64	-40.42	389.08	40.4600752	-104.7409607	0.00
2604.00	11.82	95.93	2563.49	114.33	-42.53	409.46	40.4600694	-104.7408875	0.00
2704.00	11.82	95.93	2661.37	120.02	-44.65	429.83	40.4600635	-104.7408142	0.00
2804.00	11.82	95.93	2759.25	125.71	-46.76	450.21	40.4600577	-104.7407410	0.00
2904.00	11.82	95.93	2857.13	131.40	-48.88	470.59	40.4600519	-104.7406678	0.00
3004.00	11.82	95.93	2955.01	137.09	-51.00	490.96	40.4600461	-104.7405946	0.00
3104.00	11.82	95.93	3052.88	142.78	-53.11	511.34	40.4600403	-104.7405214	0.00
3204.00	11.82	95.93	3150.76	148.46	-55.23	531.71	40.4600345	-104.7404481	0.00
3304.00	11.82	95.93	3248.64	154.15	-57.35	552.09	40.4600287	-104.7403749	0.00
3404.00	11.82	95.93	3346.52	159.84	-59.46	572.46	40.4600229	-104.7403017	0.00
3504.00	11.82	95.93	3444.40	165.53	-61.58	592.84	40.4600171	-104.7402285	0.00
3604.00	11.82	95.93	3542.28	171.22	-63.70	613.22	40.4600113	-104.7401553	0.00
3704.00	11.82	95.93	3640.16	176.91	-65.81	633.59	40.4600054	-104.7400820	0.00
3804.00	11.82	95.93	3738.04	182.60	-67.93	653.97	40.4599996	-104.7400088	0.00
3904.00	11.82	95.93	3835.92	188.29	-70.05	674.34	40.4599938	-104.7399356	0.00
4004.00	11.82	95.93	3933.80	193.98	-72.16	694.72	40.4599880	-104.7398624	0.00
4104.00	11.82	95.93	4031.68	199.67	-74.28	715.09	40.4599822	-104.7397891	0.00
4204.00	11.82	95.93	4129.56	205.36	-76.40	735.47	40.4599764	-104.7397159	0.00
4304.00	11.82	95.93	4227.44	211.05	-78.51	755.85	40.4599706	-104.7396427	0.00
4404.00	11.82	95.93	4325.31	216.74	-80.63	776.22	40.4599648	-104.7395695	0.00
4504.00	11.82	95.93	4423.19	222.43	-82.75	796.60	40.4599589	-104.7394963	0.00

CHALK_9N-35C-M_REV-B.0_PWP.las

4604.00	11.82	95.93	4521.07	228.11	-84.86	816.97	40.4599531	-104.7394230	0.00
4704.00	11.82	95.93	4618.95	233.80	-86.98	837.35	40.4599473	-104.7393498	0.00
4804.00	11.82	95.93	4716.83	239.49	-89.10	857.73	40.4599415	-104.7392766	0.00
4904.00	11.82	95.93	4814.71	245.18	-91.21	878.10	40.4599357	-104.7392034	0.00
5004.00	11.82	95.93	4912.59	250.87	-93.33	898.48	40.4599299	-104.7391301	0.00
5104.00	11.82	95.93	5010.47	256.56	-95.44	918.85	40.4599241	-104.7390569	0.00
5204.00	11.82	95.93	5108.35	262.25	-97.56	939.23	40.4599183	-104.7389837	0.00
5304.00	11.82	95.93	5206.23	267.94	-99.68	959.60	40.4599125	-104.7389105	0.00
5404.00	11.82	95.93	5304.11	273.63	-101.79	979.98	40.4599066	-104.7388373	0.00
5504.00	11.82	95.93	5401.99	279.32	-103.91	1000.36	40.4599008	-104.7387640	0.00
5604.00	11.82	95.93	5499.87	285.01	-106.03	1020.73	40.4598950	-104.7386908	0.00
5704.00	11.82	95.93	5597.74	290.70	-108.14	1041.11	40.4598892	-104.7386176	0.00
5804.00	11.82	95.93	5695.62	296.39	-110.26	1061.48	40.4598834	-104.7385444	0.00
5904.00	11.82	95.93	5793.50	302.08	-112.38	1081.86	40.4598776	-104.7384712	0.00
6004.00	11.82	95.93	5891.38	307.77	-114.49	1102.24	40.4598718	-104.7383979	0.00
6104.00	11.82	95.93	5989.26	313.45	-116.61	1122.61	40.4598660	-104.7383247	0.00
6204.00	11.82	95.93	6087.14	319.14	-118.73	1142.99	40.4598602	-104.7382515	0.00
6304.00	11.82	95.93	6185.02	324.83	-120.84	1163.36	40.4598543	-104.7381783	0.00
6404.00	11.82	95.93	6282.90	330.52	-122.96	1183.74	40.4598485	-104.7381050	0.00
6504.00	11.82	95.93	6380.78	336.21	-125.08	1204.11	40.4598427	-104.7380318	0.00
6553.31	11.82	95.93	6429.05	339.02	-126.12	1214.16	40.4598398	-104.7379957	0.00
6604.00	13.02	116.52	6478.57	343.88	-129.21	1224.44	40.4598314	-104.7379588	9.00
6704.00	18.68	142.78	6574.85	364.92	-147.02	1244.25	40.4597825	-104.7378876	9.00
6804.00	26.22	155.83	6667.26	400.69	-180.00	1263.01	40.4596920	-104.7378202	9.00
6904.00	34.44	163.17	6753.53	450.32	-227.31	1280.28	40.4595621	-104.7377581	9.00
7004.00	42.94	167.92	6831.53	512.57	-287.81	1295.63	40.4593960	-104.7377030	9.00
7104.00	51.58	171.35	6899.35	585.92	-359.99	1308.68	40.4591979	-104.7376561	9.00
7204.00	60.30	174.04	6955.30	668.57	-442.09	1319.10	40.4589725	-104.7376187	9.00
7304.00	69.07	176.30	6998.02	758.47	-532.07	1326.64	40.4587255	-104.7375916	9.00
7404.00	77.86	178.30	7026.46	853.41	-627.73	1331.12	40.4584630	-104.7375755	9.00
7504.00	86.67	180.17	7039.90	951.06	-726.71	1332.43	40.4581913	-104.7375708	9.00
7540.19	89.86	180.84	7041.00	986.60	-762.88	1332.11	40.4580920	-104.7375720	9.00
7604.00	89.86	180.84	7041.16	1049.23	-826.68	1331.17	40.4579169	-104.7375754	0.00
7704.00	89.86	180.84	7041.41	1147.38	-926.67	1329.71	40.4576424	-104.7375806	0.00

CHALK_9N-35C-M_REV-B.0_PWP.las

7804.00	89.86	180.84	7041.65	1245.53	-1026.66	1328.25	40.4573680	-104.7375859	0.00
7904.00	89.86	180.84	7041.90	1343.68	-1126.65	1326.78	40.4570935	-104.7375912	0.00
8004.00	89.86	180.84	7042.15	1441.84	-1226.64	1325.32	40.4568190	-104.7375965	0.00
8104.00	89.86	180.84	7042.40	1539.99	-1326.63	1323.86	40.4565446	-104.7376018	0.00
8204.00	89.86	180.84	7042.65	1638.14	-1426.62	1322.39	40.4562701	-104.7376070	0.00
8304.00	89.86	180.84	7042.90	1736.29	-1526.61	1320.93	40.4559957	-104.7376123	0.00
8404.00	89.86	180.84	7043.14	1834.44	-1626.59	1319.47	40.4557212	-104.7376176	0.00
8504.00	89.86	180.84	7043.39	1932.59	-1726.58	1318.00	40.4554468	-104.7376229	0.00
8604.00	89.86	180.84	7043.64	2030.75	-1826.57	1316.54	40.4551723	-104.7376281	0.00
8704.00	89.86	180.84	7043.89	2128.90	-1926.56	1315.08	40.4548978	-104.7376334	0.00
8804.00	89.86	180.84	7044.14	2227.05	-2026.55	1313.61	40.4546234	-104.7376387	0.00
8904.00	89.86	180.84	7044.38	2325.20	-2126.54	1312.15	40.4543489	-104.7376440	0.00
9004.00	89.86	180.84	7044.63	2423.35	-2226.53	1310.69	40.4540745	-104.7376493	0.00
9104.00	89.86	180.84	7044.88	2521.50	-2326.52	1309.22	40.4538000	-104.7376545	0.00
9204.00	89.86	180.84	7045.13	2619.65	-2426.51	1307.76	40.4535256	-104.7376598	0.00
9304.00	89.86	180.84	7045.38	2717.81	-2526.50	1306.30	40.4532511	-104.7376651	0.00
9404.00	89.86	180.84	7045.62	2815.96	-2626.48	1304.83	40.4529767	-104.7376704	0.00
9504.00	89.86	180.84	7045.87	2914.11	-2726.47	1303.37	40.4527022	-104.7376756	0.00
9604.00	89.86	180.84	7046.12	3012.26	-2826.46	1301.91	40.4524277	-104.7376809	0.00
9704.00	89.86	180.84	7046.37	3110.41	-2926.45	1300.44	40.4521533	-104.7376862	0.00
9804.00	89.86	180.84	7046.62	3208.56	-3026.44	1298.98	40.4518788	-104.7376915	0.00
9904.00	89.86	180.84	7046.86	3306.72	-3126.43	1297.52	40.4516044	-104.7376967	0.00
10004.00	89.86	180.84	7047.11	3404.87	-3226.42	1296.05	40.4513299	-104.7377020	0.00
10104.00	89.86	180.84	7047.36	3503.02	-3326.41	1294.59	40.4510555	-104.7377073	0.00
10204.00	89.86	180.84	7047.61	3601.17	-3426.40	1293.13	40.4507810	-104.7377126	0.00
10304.00	89.86	180.84	7047.86	3699.32	-3526.39	1291.66	40.4505065	-104.7377178	0.00
10404.00	89.86	180.84	7048.11	3797.47	-3626.37	1290.20	40.4502321	-104.7377231	0.00
10504.00	89.86	180.84	7048.35	3895.62	-3726.36	1288.74	40.4499576	-104.7377284	0.00
10604.00	89.86	180.84	7048.60	3993.78	-3826.35	1287.27	40.4496832	-104.7377337	0.00
10704.00	89.86	180.84	7048.85	4091.93	-3926.34	1285.81	40.4494087	-104.7377390	0.00
10804.00	89.86	180.84	7049.10	4190.08	-4026.33	1284.35	40.4491342	-104.7377442	0.00
10904.00	89.86	180.84	7049.35	4288.23	-4126.32	1282.88	40.4488598	-104.7377495	0.00
11004.00	89.86	180.84	7049.59	4386.38	-4226.31	1281.42	40.4485853	-104.7377548	0.00
11104.00	89.86	180.84	7049.84	4484.53	-4326.30	1279.96	40.4483109	-104.7377601	0.00

CHALK_9N-35C-M_REV-B.0_PWP.las

11204.00	89.86	180.84	7050.09	4582.69	-4426.29	1278.49	40.4480364	-104.7377653	0.00
11304.00	89.86	180.84	7050.34	4680.84	-4526.28	1277.03	40.4477620	-104.7377706	0.00
11404.00	89.86	180.84	7050.59	4778.99	-4626.26	1275.57	40.4474875	-104.7377759	0.00
11504.00	89.86	180.84	7050.83	4877.14	-4726.25	1274.10	40.4472130	-104.7377812	0.00
11604.00	89.86	180.84	7051.08	4975.29	-4826.24	1272.64	40.4469386	-104.7377864	0.00
11704.00	89.86	180.84	7051.33	5073.44	-4926.23	1271.18	40.4466641	-104.7377917	0.00
11804.00	89.86	180.84	7051.58	5171.59	-5026.22	1269.71	40.4463897	-104.7377970	0.00
11904.00	89.86	180.84	7051.83	5269.75	-5126.21	1268.25	40.4461152	-104.7378023	0.00
12004.00	89.86	180.84	7052.08	5367.90	-5226.20	1266.79	40.4458408	-104.7378075	0.00
12104.00	89.86	180.84	7052.32	5466.05	-5326.19	1265.32	40.4455663	-104.7378128	0.00
12204.00	89.86	180.84	7052.57	5564.20	-5426.18	1263.86	40.4452918	-104.7378181	0.00
12304.00	89.86	180.84	7052.82	5662.35	-5526.16	1262.40	40.4450174	-104.7378234	0.00
12404.00	89.86	180.84	7053.07	5760.50	-5626.15	1260.93	40.4447429	-104.7378286	0.00
12504.00	89.86	180.84	7053.32	5858.66	-5726.14	1259.47	40.4444685	-104.7378339	0.00
12604.00	89.86	180.84	7053.56	5956.81	-5826.13	1258.01	40.4441940	-104.7378392	0.00
12704.00	89.86	180.84	7053.81	6054.96	-5926.12	1256.54	40.4439196	-104.7378445	0.00
12804.00	89.86	180.84	7054.06	6153.11	-6026.11	1255.08	40.4436451	-104.7378498	0.00
12904.00	89.86	180.84	7054.31	6251.26	-6126.10	1253.62	40.4433706	-104.7378550	0.00
13004.00	89.86	180.84	7054.56	6349.41	-6226.09	1252.16	40.4430962	-104.7378603	0.00
13104.00	89.86	180.84	7054.80	6447.56	-6326.08	1250.69	40.4428217	-104.7378656	0.00
13204.00	89.86	180.84	7055.05	6545.72	-6426.07	1249.23	40.4425473	-104.7378709	0.00
13304.00	89.86	180.84	7055.30	6643.87	-6526.05	1247.77	40.4422728	-104.7378761	0.00
13404.00	89.86	180.84	7055.55	6742.02	-6626.04	1246.30	40.4419984	-104.7378814	0.00
13504.00	89.86	180.84	7055.80	6840.17	-6726.03	1244.84	40.4417239	-104.7378867	0.00
13585.94	89.86	180.84	7056.00	6920.60	-6807.97	1243.64	40.4414990	-104.7378910	0.00
13593.70	90.01	180.79	7056.01	6928.22	-6815.73	1243.53	40.4414777	-104.7378914	2.00
13604.00	90.01	180.79	7056.01	6938.32	-6826.02	1243.39	40.4414494	-104.7378919	0.00
13686.14	90.01	180.79	7056.00	7018.96	-6908.15	1242.25	40.4412240	-104.7378960	0.00



Planned Wellpath Report

CHALK 9N-35C-M (REV-B.0) PWP

Page 1 of 9



REFERENCE WELLPATH IDENTIFICATION

Operator	SRC ENERGY	Slot	SLOT#35 CHALK 9N-35C-M (2331'FNL & 2091'FEL, SEC.26)
Area	COLORADO	Well	CHALK 9N-35C-M
Field	WELD COUNTY (NAD83,TRUE NORTH)	Wellbore	CHALK 9N-35C-M PWB
Facility	SEC.26-T06N-R66W		

REPORT SETUP INFORMATION

Projection System	NAD83 / Lambert Colorado SP, Northern Zone (501), US feet	Software System	WellArchitect® 5.0
North Reference	True	User	Doddanna
Scale	0.999964	Report Generated	8/8/2018 at 10:13:51 AM
Convergence at slot	0.49° East	Database/Source file	WellArchitectDB2/CHALK_9N-35C-M__REV-B.0__PWP.xml

WELLPATH LOCATION

	Local coordinates		Grid coordinates		Geographic coordinates	
	North[ft]	East[ft]	Easting[US ft]	Northing[US ft]	Latitude	Longitude
Slot Location	-618.22	-492.78	3210821.00	1411386.79	40°27'36.670"N	104°44'32.492"W
Facility Reference Pt			3211308.44	1412009.18	40°27'42.779"N	104°44'26.117"W
Field Reference Pt			3171284.48	1426358.81	40°30'07.643"N	104°53'02.634"W

WELLPATH DATUM

Calculation method	Minimum curvature	PROPETRO 12 (4') (RKB) to Facility Vertical Datum	4700.00ft
Horizontal Reference Pt	Slot	PROPETRO 12 (4') (RKB) to Mean Sea Level	4700.00ft
Vertical Reference Pt	PROPETRO 12 (4') (RKB)	PROPETRO 12 (4') (RKB) to Mud Line at Slot (SLOT#35 CHALK 9N-35C-M (2331'FNL & 2091'FEL, SEC.26))	4700.00ft
MD Reference Pt	PROPETRO 12 (4') (RKB)	Section Origin	N 0.00, E 0.00 ft
Field Vertical Reference	Mean Sea Level	Section Azimuth	169.81°



Planned Wellpath Report

CHALK 9N-35C-M (REV-B.0) PWP

Page 2 of 9



REFERENCE WELLPATH IDENTIFICATION			
Operator	SRC ENERGY	Slot	SLOT#35 CHALK 9N-35C-M (2331'FNL & 2091'FEL, SEC.26)
Area	COLORADO	Well	CHALK 9N-35C-M
Field	WELD COUNTY (NAD83,TRUE NORTH)	Wellbore	CHALK 9N-35C-M PWB
Facility	SEC.26-T06N-R66W		

WELLPATH DATA (145 stations) † = interpolated/extrapolated station

MD [ft]	Inclination [°]	Azimuth [°]	TVD [ft]	Vert Sect [ft]	North [ft]	East [ft]	DLS [°/100ft]	Comments
0.00†	0.000	95.930	0.00	0.00	0.00	0.00	0.00	
4.00	0.000	95.930	4.00	0.00	0.00	0.00	0.00	Tie On
104.00†	0.000	95.930	104.00	0.00	0.00	0.00	0.00	
204.00†	0.000	95.930	204.00	0.00	0.00	0.00	0.00	
300.00	0.000	95.930	300.00	0.00	0.00	0.00	0.00	End of Tangent
304.00†	0.080	95.930	304.00	0.00	0.00	0.00	2.00	
404.00†	2.080	95.930	403.98	0.52	-0.20	1.88	2.00	
504.00†	4.080	95.930	503.83	2.02	-0.75	7.22	2.00	
604.00†	6.080	95.930	603.43	4.48	-1.66	16.03	2.00	
704.00†	8.080	95.930	702.66	7.90	-2.94	28.29	2.00	
804.00†	10.080	95.930	801.40	12.28	-4.57	43.98	2.00	
891.05	11.821	95.930	886.86	16.87	-6.28	60.43	2.00	End of Build (XS)
904.00†	11.821	95.930	899.54	17.61	-6.55	63.07	0.00	
1004.00†	11.821	95.930	997.42	23.30	-8.67	83.44	0.00	
1104.00†	11.821	95.930	1095.30	28.99	-10.78	103.82	0.00	
1204.00†	11.821	95.930	1193.18	34.68	-12.90	124.20	0.00	
1304.00†	11.821	95.930	1291.06	40.37	-15.02	144.57	0.00	
1404.00†	11.821	95.930	1388.94	46.06	-17.13	164.95	0.00	
1504.00†	11.821	95.930	1486.82	51.75	-19.25	185.32	0.00	
1604.00†	11.821	95.930	1584.70	57.44	-21.37	205.70	0.00	
1704.00†	11.821	95.930	1682.58	63.12	-23.48	226.08	0.00	
1804.00†	11.821	95.930	1780.45	68.81	-25.60	246.45	0.00	
1904.00†	11.821	95.930	1878.33	74.50	-27.72	266.83	0.00	
2004.00†	11.821	95.930	1976.21	80.19	-29.83	287.20	0.00	
2104.00†	11.821	95.930	2074.09	85.88	-31.95	307.58	0.00	
2204.00†	11.821	95.930	2171.97	91.57	-34.07	327.95	0.00	
2304.00†	11.821	95.930	2269.85	97.26	-36.18	348.33	0.00	
2404.00†	11.821	95.930	2367.73	102.95	-38.30	368.71	0.00	
2504.00†	11.821	95.930	2465.61	108.64	-40.42	389.08	0.00	
2604.00†	11.821	95.930	2563.49	114.33	-42.53	409.46	0.00	



Planned Wellpath Report

CHALK 9N-35C-M (REV-B.0) PWP

Page 3 of 9



REFERENCE WELLPATH IDENTIFICATION			
Operator	SRC ENERGY	Slot	SLOT#35 CHALK 9N-35C-M (2331'FNL & 2091'FEL, SEC.26)
Area	COLORADO	Well	CHALK 9N-35C-M
Field	WELD COUNTY (NAD83,TRUE NORTH)	Wellbore	CHALK 9N-35C-M PWB
Facility	SEC.26-T06N-R66W		

WELLPATH DATA (145 stations) † = interpolated/extrapolated station								
MD [ft]	Inclination [°]	Azimuth [°]	TVD [ft]	Vert Sect [ft]	North [ft]	East [ft]	DLS [°/100ft]	Comments
2704.00†	11.821	95.930	2661.37	120.02	-44.65	429.83	0.00	
2804.00†	11.821	95.930	2759.25	125.71	-46.76	450.21	0.00	
2904.00†	11.821	95.930	2857.13	131.40	-48.88	470.59	0.00	
3004.00†	11.821	95.930	2955.01	137.09	-51.00	490.96	0.00	
3104.00†	11.821	95.930	3052.88	142.78	-53.11	511.34	0.00	
3204.00†	11.821	95.930	3150.76	148.46	-55.23	531.71	0.00	
3304.00†	11.821	95.930	3248.64	154.15	-57.35	552.09	0.00	
3404.00†	11.821	95.930	3346.52	159.84	-59.46	572.46	0.00	
3504.00†	11.821	95.930	3444.40	165.53	-61.58	592.84	0.00	
3604.00†	11.821	95.930	3542.28	171.22	-63.70	613.22	0.00	
3704.00†	11.821	95.930	3640.16	176.91	-65.81	633.59	0.00	
3804.00†	11.821	95.930	3738.04	182.60	-67.93	653.97	0.00	
3904.00†	11.821	95.930	3835.92	188.29	-70.05	674.34	0.00	
4004.00†	11.821	95.930	3933.80	193.98	-72.16	694.72	0.00	
4104.00†	11.821	95.930	4031.68	199.67	-74.28	715.09	0.00	
4204.00†	11.821	95.930	4129.56	205.36	-76.40	735.47	0.00	
4304.00†	11.821	95.930	4227.44	211.05	-78.51	755.85	0.00	
4404.00†	11.821	95.930	4325.31	216.74	-80.63	776.22	0.00	
4504.00†	11.821	95.930	4423.19	222.43	-82.75	796.60	0.00	
4604.00†	11.821	95.930	4521.07	228.11	-84.86	816.97	0.00	
4704.00†	11.821	95.930	4618.95	233.80	-86.98	837.35	0.00	
4804.00†	11.821	95.930	4716.83	239.49	-89.10	857.73	0.00	
4904.00†	11.821	95.930	4814.71	245.18	-91.21	878.10	0.00	
5004.00†	11.821	95.930	4912.59	250.87	-93.33	898.48	0.00	
5104.00†	11.821	95.930	5010.47	256.56	-95.44	918.85	0.00	
5204.00†	11.821	95.930	5108.35	262.25	-97.56	939.23	0.00	
5304.00†	11.821	95.930	5206.23	267.94	-99.68	959.60	0.00	
5404.00†	11.821	95.930	5304.11	273.63	-101.79	979.98	0.00	
5504.00†	11.821	95.930	5401.99	279.32	-103.91	1000.36	0.00	
5604.00†	11.821	95.930	5499.87	285.01	-106.03	1020.73	0.00	



Planned Wellpath Report

CHALK 9N-35C-M (REV-B.0) PWP

Page 4 of 9



REFERENCE WELLPATH IDENTIFICATION			
Operator	SRC ENERGY	Slot	SLOT#35 CHALK 9N-35C-M (2331'FNL & 2091'FEL, SEC.26)
Area	COLORADO	Well	CHALK 9N-35C-M
Field	WELD COUNTY (NAD83,TRUE NORTH)	Wellbore	CHALK 9N-35C-M PWB
Facility	SEC.26-T06N-R66W		

WELLPATH DATA (145 stations) † = interpolated/extrapolated station

MD [ft]	Inclination [°]	Azimuth [°]	TVD [ft]	Vert Sect [ft]	North [ft]	East [ft]	DLS [°/100ft]	Comments
5704.00†	11.821	95.930	5597.74	290.70	-108.14	1041.11	0.00	
5804.00†	11.821	95.930	5695.62	296.39	-110.26	1061.48	0.00	
5904.00†	11.821	95.930	5793.50	302.08	-112.38	1081.86	0.00	
6004.00†	11.821	95.930	5891.38	307.77	-114.49	1102.24	0.00	
6104.00†	11.821	95.930	5989.26	313.45	-116.61	1122.61	0.00	
6204.00†	11.821	95.930	6087.14	319.14	-118.73	1142.99	0.00	
6304.00†	11.821	95.930	6185.02	324.83	-120.84	1163.36	0.00	
6404.00†	11.821	95.930	6282.90	330.52	-122.96	1183.74	0.00	
6504.00†	11.821	95.930	6380.78	336.21	-125.08	1204.11	0.00	
6553.31	11.821	95.930	6429.05	339.02	-126.12	1214.16	0.00	End of Tangent (XS)
6604.00†	13.022	116.519	6478.57	343.88	-129.21	1224.44	9.00	
6704.00†	18.675	142.784	6574.85	364.92	-147.02	1244.25	9.00	
6804.00†	26.221	155.826	6667.26	400.69	-180.00	1263.01	9.00	
6904.00†	34.437	163.167	6753.53	450.32	-227.31	1280.28	9.00	
7004.00†	42.938	167.921	6831.53	512.57	-287.81	1295.63	9.00	
7104.00†	51.581	171.351	6899.35	585.92	-359.99	1308.68	9.00	
7204.00†	60.303	174.039	6955.30	668.57	-442.09	1319.10	9.00	
7304.00†	69.069	176.295	6998.02	758.47	-532.07	1326.64	9.00	
7404.00†	77.863	178.298	7026.46	853.41	-627.73	1331.12	9.00	
7504.00†	86.669	180.173	7039.90	951.06	-726.71	1332.43	9.00	
7540.19	89.858	180.838	7041.00 [†]	986.60	-762.88	1332.11	9.00	End of 3D Arc (XS)
7604.00†	89.858	180.838	7041.16	1049.23	-826.68	1331.17	0.00	
7704.00†	89.858	180.838	7041.41	1147.38	-926.67	1329.71	0.00	
7804.00†	89.858	180.838	7041.65	1245.53	-1026.66	1328.25	0.00	
7904.00†	89.858	180.838	7041.90	1343.68	-1126.65	1326.78	0.00	
8004.00†	89.858	180.838	7042.15	1441.84	-1226.64	1325.32	0.00	
8104.00†	89.858	180.838	7042.40	1539.99	-1326.63	1323.86	0.00	
8204.00†	89.858	180.838	7042.65	1638.14	-1426.62	1322.39	0.00	
8304.00†	89.858	180.838	7042.90	1736.29	-1526.61	1320.93	0.00	
8404.00†	89.858	180.838	7043.14	1834.44	-1626.59	1319.47	0.00	



Planned Wellpath Report

CHALK 9N-35C-M (REV-B.0) PWP

Page 5 of 9



REFERENCE WELLPATH IDENTIFICATION			
Operator	SRC ENERGY	Slot	SLOT#35 CHALK 9N-35C-M (2331'FNL & 2091'FEL, SEC.26)
Area	COLORADO	Well	CHALK 9N-35C-M
Field	WELD COUNTY (NAD83,TRUE NORTH)	Wellbore	CHALK 9N-35C-M PWB
Facility	SEC.26-T06N-R66W		

WELLPATH DATA (145 stations) † = interpolated/extrapolated station								
MD [ft]	Inclination [°]	Azimuth [°]	TVD [ft]	Vert Sect [ft]	North [ft]	East [ft]	DLS [°/100ft]	Comments
8504.00†	89.858	180.838	7043.39	1932.59	-1726.58	1318.00	0.00	
8604.00†	89.858	180.838	7043.64	2030.75	-1826.57	1316.54	0.00	
8704.00†	89.858	180.838	7043.89	2128.90	-1926.56	1315.08	0.00	
8804.00†	89.858	180.838	7044.14	2227.05	-2026.55	1313.61	0.00	
8904.00†	89.858	180.838	7044.38	2325.20	-2126.54	1312.15	0.00	
9004.00†	89.858	180.838	7044.63	2423.35	-2226.53	1310.69	0.00	
9104.00†	89.858	180.838	7044.88	2521.50	-2326.52	1309.22	0.00	
9204.00†	89.858	180.838	7045.13	2619.65	-2426.51	1307.76	0.00	
9304.00†	89.858	180.838	7045.38	2717.81	-2526.50	1306.30	0.00	
9404.00†	89.858	180.838	7045.62	2815.96	-2626.48	1304.83	0.00	
9504.00†	89.858	180.838	7045.87	2914.11	-2726.47	1303.37	0.00	
9604.00†	89.858	180.838	7046.12	3012.26	-2826.46	1301.91	0.00	
9704.00†	89.858	180.838	7046.37	3110.41	-2926.45	1300.44	0.00	
9804.00†	89.858	180.838	7046.62	3208.56	-3026.44	1298.98	0.00	
9904.00†	89.858	180.838	7046.86	3306.72	-3126.43	1297.52	0.00	
10004.00†	89.858	180.838	7047.11	3404.87	-3226.42	1296.05	0.00	
10104.00†	89.858	180.838	7047.36	3503.02	-3326.41	1294.59	0.00	
10204.00†	89.858	180.838	7047.61	3601.17	-3426.40	1293.13	0.00	
10304.00†	89.858	180.838	7047.86	3699.32	-3526.39	1291.66	0.00	
10404.00†	89.858	180.838	7048.11	3797.47	-3626.37	1290.20	0.00	
10504.00†	89.858	180.838	7048.35	3895.62	-3726.36	1288.74	0.00	
10604.00†	89.858	180.838	7048.60	3993.78	-3826.35	1287.27	0.00	
10704.00†	89.858	180.838	7048.85	4091.93	-3926.34	1285.81	0.00	
10804.00†	89.858	180.838	7049.10	4190.08	-4026.33	1284.35	0.00	
10904.00†	89.858	180.838	7049.35	4288.23	-4126.32	1282.88	0.00	
11004.00†	89.858	180.838	7049.59	4386.38	-4226.31	1281.42	0.00	
11104.00†	89.858	180.838	7049.84	4484.53	-4326.30	1279.96	0.00	
11204.00†	89.858	180.838	7050.09	4582.69	-4426.29	1278.49	0.00	
11304.00†	89.858	180.838	7050.34	4680.84	-4526.28	1277.03	0.00	
11404.00†	89.858	180.838	7050.59	4778.99	-4626.26	1275.57	0.00	



Planned Wellpath Report

CHALK 9N-35C-M (REV-B.0) PWP

Page 6 of 9



REFERENCE WELLPATH IDENTIFICATION			
Operator	SRC ENERGY	Slot	SLOT#35 CHALK 9N-35C-M (2331'FNL & 2091'FEL, SEC.26)
Area	COLORADO	Well	CHALK 9N-35C-M
Field	WELD COUNTY (NAD83,TRUE NORTH)	Wellbore	CHALK 9N-35C-M PWB
Facility	SEC.26-T06N-R66W		

WELLPATH DATA (145 stations) † = interpolated/extrapolated station								
MD [ft]	Inclination [°]	Azimuth [°]	TVD [ft]	Vert Sect [ft]	North [ft]	East [ft]	DLS [°/100ft]	Comments
11504.00†	89.858	180.838	7050.83	4877.14	-4726.25	1274.10	0.00	
11604.00†	89.858	180.838	7051.08	4975.29	-4826.24	1272.64	0.00	
11704.00†	89.858	180.838	7051.33	5073.44	-4926.23	1271.18	0.00	
11804.00†	89.858	180.838	7051.58	5171.59	-5026.22	1269.71	0.00	
11904.00†	89.858	180.838	7051.83	5269.75	-5126.21	1268.25	0.00	
12004.00†	89.858	180.838	7052.08	5367.90	-5226.20	1266.79	0.00	
12104.00†	89.858	180.838	7052.32	5466.05	-5326.19	1265.32	0.00	
12204.00†	89.858	180.838	7052.57	5564.20	-5426.18	1263.86	0.00	
12304.00†	89.858	180.838	7052.82	5662.35	-5526.16	1262.40	0.00	
12404.00†	89.858	180.838	7053.07	5760.50	-5626.15	1260.93	0.00	
12504.00†	89.858	180.838	7053.32	5858.66	-5726.14	1259.47	0.00	
12604.00†	89.858	180.838	7053.56	5956.81	-5826.13	1258.01	0.00	
12704.00†	89.858	180.838	7053.81	6054.96	-5926.12	1256.54	0.00	
12804.00†	89.858	180.838	7054.06	6153.11	-6026.11	1255.08	0.00	
12904.00†	89.858	180.838	7054.31	6251.26	-6126.10	1253.62	0.00	
13004.00†	89.858	180.838	7054.56	6349.41	-6226.09	1252.16	0.00	
13104.00†	89.858	180.838	7054.80	6447.56	-6326.08	1250.69	0.00	
13204.00†	89.858	180.838	7055.05	6545.72	-6426.07	1249.23	0.00	
13304.00†	89.858	180.838	7055.30	6643.87	-6526.05	1247.77	0.00	
13404.00†	89.858	180.838	7055.55	6742.02	-6626.04	1246.30	0.00	
13504.00†	89.858	180.838	7055.80	6840.17	-6726.03	1244.84	0.00	
13585.94	89.858	180.838	7056.00 ²	6920.60	-6807.97	1243.64	0.00	End of Tangent (XS)
13593.70	90.006	180.791	7056.01	6928.22	-6815.73	1243.53	2.00	End of 3D Arc (J)
13604.00†	90.006	180.791	7056.01	6938.32	-6826.02	1243.39	0.00	
13686.14	90.006	180.791	7056.00 ³	7018.96	-6908.15	1242.25	0.00	End of Tangent (J)



Planned Wellpath Report

CHALK 9N-35C-M (REV-B.0) PWP

Page 7 of 9



REFERENCE WELLPATH IDENTIFICATION			
Operator	SRC ENERGY	Slot	SLOT#35 CHALK 9N-35C-M (2331'FNL & 2091'FEL, SEC.26)
Area	COLORADO	Well	CHALK 9N-35C-M
Field	WELD COUNTY (NAD83,TRUE NORTH)	Wellbore	CHALK 9N-35C-M PWB
Facility	SEC.26-T06N-R66W		

HOLE & CASING SECTIONS - Ref Wellbore: CHALK 9N-35C-M PWB Ref Wellpath: CHALK 9N-35C-M (REV-B.0) PWP									
String/Diameter	Start MD [ft]	End MD [ft]	Interval [ft]	Start TVD [ft]	End TVD [ft]	Start N/S [ft]	Start E/W [ft]	End N/S [ft]	End E/W [ft]
13.5in Open Hole	4.00	1750.00	1746.00	4.00	1727.60	0.00	0.00	-24.46	235.45
9.625in Casing Surface	4.00	1750.00	1746.00	4.00	1727.60	0.00	0.00	-24.46	235.45
8.5in Open Hole	1750.00	13686.14	11936.14	1727.60	7056.00	-24.46	235.45	-6908.15	1242.25



Planned Wellpath Report

CHALK 9N-35C-M (REV-B.0) PWP

Page 8 of 9



REFERENCE WELLPATH IDENTIFICATION			
Operator	SRC ENERGY	Slot	SLOT#35 CHALK 9N-35C-M (2331'FNL & 2091'FEL, SEC.26)
Area	COLORADO	Well	CHALK 9N-35C-M
Field	WELD COUNTY (NAD83,TRUE NORTH)	Wellbore	CHALK 9N-35C-M PWB
Facility	SEC.26-T06N-R66W		

TARGETS									
Name	MD [ft]	TVD [ft]	North [ft]	East [ft]	Grid East [US ft]	Grid North [US ft]	Latitude	Longitude	Shape
EAST HALF OF SEC.02-T05N-R66W		-23.00	618.23	492.76	3211308.44	1412009.18	40°27'42.779"N	104°44'26.117"W	polygon
EAST HALF OF SEC.26-T06N-R66W		-23.00	618.23	492.76	3211308.44	1412009.18	40°27'42.779"N	104°44'26.117"W	polygon
EAST HALF OF SEC.35-T06N-R66W		-23.00	618.23	492.76	3211308.44	1412009.18	40°27'42.779"N	104°44'26.117"W	polygon
SEC.25-T06N-R66W		-23.00	618.23	492.76	3211308.44	1412009.18	40°27'42.779"N	104°44'26.117"W	polygon
SEC.30-T06N-R65W		-23.00	618.23	492.76	3211308.44	1412009.18	40°27'42.779"N	104°44'26.117"W	polygon
SOUTH HALF OF SEC.19-T06N-R65W		-23.00	618.23	492.76	3211308.44	1412009.18	40°27'42.779"N	104°44'26.117"W	polygon
SOUTH HALF OF SEC.24-T06N-R66W		-23.00	618.23	492.76	3211308.44	1412009.18	40°27'42.779"N	104°44'26.117"W	polygon
1) CHALK 9N-35C-M TOP OF PROD ON PLAT (2165'FSL & 768'FEL, SEC.26)	7540.19	7041.00	-762.88	1332.11	3212159.52	1410635.34	40°27'29.131"N	104°44'15.259"W	circle
CHALK 9N-35C-M BHL ON PLAT (1493'FSL & 836'FEL, SEC.35)		7056.00	-6807.97	1243.64	3212122.71	1404589.96	40°26'29.396"N	104°44'16.408"W	circle
3) CHALK 9N-35C-M BHL ON PLAT REV-2 (1393'FSL & 836'FEL, SEC.35)	13686.14	7056.00	-6908.15	1242.25	3212122.18	1404489.77	40°26'28.406"N	104°44'16.426"W	circle
2) CHALK 9N-35C-M BPZ ON PLAT (1493'FSL & 836'FEL, SEC.35)	13585.94	7056.00	-6807.97	1243.64	3212122.71	1404589.96	40°26'29.396"N	104°44'16.408"W	circle



Planned Wellpath Report

CHALK 9N-35C-M (REV-B.0) PWP

Page 9 of 9



REFERENCE WELLPATH IDENTIFICATION			
Operator	SRC ENERGY	Slot	SLOT#35 CHALK 9N-35C-M (2331'FNL & 2091'FEL, SEC.26)
Area	COLORADO	Well	CHALK 9N-35C-M
Field	WELD COUNTY (NAD83,TRUE NORTH)	Wellbore	CHALK 9N-35C-M PWB
Facility	SEC.26-T06N-R66W		

SURVEY PROGRAM - Ref Wellbore: CHALK 9N-35C-M PWB Ref Wellpath: CHALK 9N-35C-M (REV-B.0) PWP				
Start MD [ft]	End MD [ft]	Positional Uncertainty Model	Log Name/Comment	Wellbore
4.00	1750.00	BHI NaviTrak (Rotating+Axial Corr)		CHALK 9N-35C-M PWB
1750.00	13686.14	BHI AutoTrak Curve (MagCAD+IFR1, Short spacing)		CHALK 9N-35C-M PWB