

SRC ENERGY

Location: COLORADO Slot: SLOT#32 CHALK 37N-2A-XR (2330'FNL & 2151'FEL, SEC.26)
Field: WELD COUNTY (NAD83, TRUE NORTH) Well: CHALK 37N-2A-XR
Facility: SEC.26-T06N-R66W Wellbore: CHALK 37N-2A-XR PWB

Plot reference wellpath is CHALK 37N-2A-XR (REV-8.0) PWP	Grid System: NAD83 / Lambert Colorado SP, Northern Zone (501), US feet
True vertical depths are referenced to PROPETRO 12 (4) (RKB)	* = Wellpath was transformed from a different geodetic datum
Measured depths are referenced to PROPETRO 12 (4) (RKB)	North Reference: True north
PROPETRO 12 (4) (RKB) to Mean Sea Level: 4700 feet	Scale: True distance
Mean Sea Level to Mud line (At Slot: SLOT#32 CHALK 37N-2A-XR (2330'FNL & 2151'FEL, SEC.26)): 0 feet	Depths are in feet
Coordinates are in feet referenced to Slot	Created by: doddiana on 2018-08-08
	Database: WellArchitectDB2

Location Information

Facility Name				Grid East (US ft)	Grid North (US ft)	Latitude	Longitude
SEC.26-T06N-R66W				3211308.441	1412009.181	40°27'42.779"N	104°44'26.117"W
Slot	Local N (ft)	Local E (ft)		Grid East (US ft)	Grid North (US ft)	Latitude	Longitude
SLOT#32 CHALK 37N-2A-XR (2330'FNL & 2151'FEL, SEC.26)	417.91	-552.91		3210760.860	1411386.578	40°27'36.673"N	104°44'33.270"W
PROPETRO 12 (4) (RKB) to Mud line (At Slot: SLOT#32 CHALK 37N-2A-XR (2330'FNL & 2151'FEL, SEC.26))						4700ft	
Mean Sea Level to Mud line (At Slot: SLOT#32 CHALK 37N-2A-XR (2330'FNL & 2151'FEL, SEC.26))						0ft	
PROPETRO 12 (4) (RKB) to Mean Sea Level						4700ft	

Survey Program

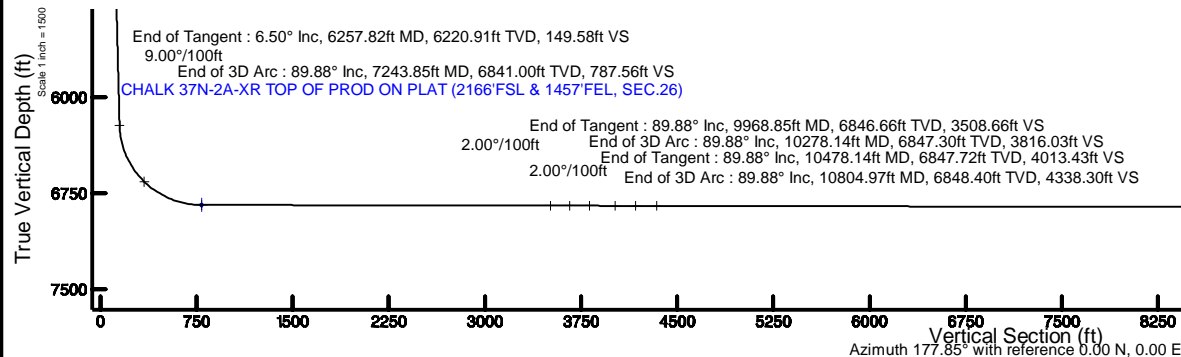
Start MD (ft)	End MD (ft)	Tool	Model	Log Name/Comment	Wellbore
4.00	1750.00	BH# NavTrak	BH# NavTrak (Rotating+Axial Corr)		CHALK 37N-2A-XR PWB
1750.00	19873.33	BH# AutoTrak Curve	BH# AutoTrak Curve (MagCAD+FR1, Short spacing)		CHALK 37N-2A-XR PWB

Well Profile Data

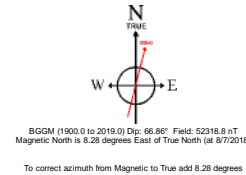
Design Comment	MD (ft)	Inc (°)	Az (°)	TVD (ft)	Local N (ft)	Local E (ft)	DLS (°/100ft)	VS (ft)
Tie On	4.00	0.000	101.032	4.00	0.00	0.00	0.00	0.00
End of Tangent	300.00	0.000	101.032	300.00	0.00	0.00	0.00	0.00
End of Build	625.00	6.500	101.032	624.31	-3.52	18.08	2.00	4.20
End of Tangent	6257.82	6.500	101.032	6220.91	-125.55	643.95	0.00	149.58
End of 3D Arc	7243.85	89.881	180.914	6841.00	-761.75	703.22	9.00	787.56
End of Tangent	9968.85	89.881	180.914	6846.66	-3486.40	659.75	0.00	3508.66
End of 3D Arc	10278.14	89.881	187.100	6847.30	-3794.79	638.15	2.00	3816.03
End of Tangent	10478.14	89.881	187.100	6847.72	-3993.26	613.43	0.00	4013.43
End of 3D Arc	10804.97	89.881	180.564	6848.40	-4319.17	591.60	2.00	4338.30
End of Tangent	19773.13	89.881	180.564	6867.00	-13286.88	503.39	0.00	13296.41
End of 3D Arc	19796.20	90.015	181.005	6867.02	-13309.95	503.07	2.00	13319.45
End of Tangent	19873.33	90.015	181.005	6867.00	-13387.07	501.72	0.00	13396.47

Hole and Casing Sections

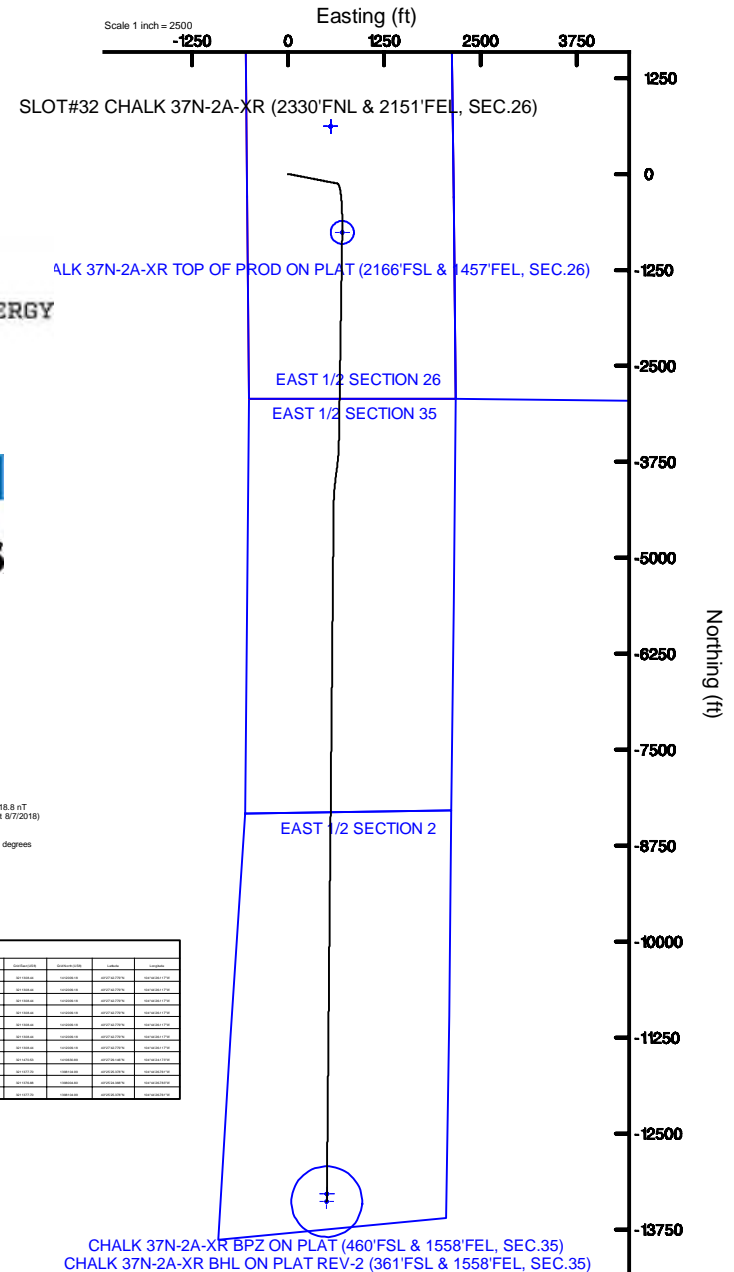
Name	Start MD (ft)	End MD (ft)	Interval (ft)	Start TVD (ft)	End TVD (ft)	Start Local N (ft)	Start Local E (ft)	End Local N (ft)	End Local E (ft)	Wellbore
13.5in Open Hole	4.00	1750.00	1746.00	4.00	1742.07	0.00	0.00	-27.89	143.08	CHALK 37N-2A-XR PWB
9.625in Casing Surface	4.00	1750.00	1746.00	4.00	1742.07	0.00	0.00	-27.89	143.08	CHALK 37N-2A-XR PWB
8.5in Open Hole	1750.00	19873.33	18123.33	1742.07	6867.00	-27.89	143.08	-13387.07	501.72	CHALK 37N-2A-XR PWB



SRC ENERGY



Targets							
Name	MD (ft)	Inc (°)	Az (°)	TVD (ft)	Local N (ft)	Local E (ft)	VS (ft)
CHALK 37N-2A-XR TOP OF PROD ON PLAT (2166'FSL & 1457'FEL, SEC.26)	6257.82	6.500	101.032	6220.91	-125.55	643.95	149.58
CHALK 37N-2A-XR BPZ ON PLAT (460'FSL & 1558'FEL, SEC.35)	9968.85	89.881	180.914	6846.66	-3486.40	659.75	3508.66
CHALK 37N-2A-XR BHL ON PLAT REV-2 (361'FSL & 1558'FEL, SEC.35)	10278.14	89.881	187.100	6847.30	-3794.79	638.15	3816.03
CHALK 37N-2A-XR BPZ ON PLAT (460'FSL & 1558'FEL, SEC.35)	10478.14	89.881	187.100	6847.72	-3993.26	613.43	4013.43
CHALK 37N-2A-XR BHL ON PLAT REV-2 (361'FSL & 1558'FEL, SEC.35)	10804.97	89.881	180.564	6848.40	-4319.17	591.60	4338.30
CHALK 37N-2A-XR BPZ ON PLAT (460'FSL & 1558'FEL, SEC.35)	19773.13	89.881	180.564	6867.00	-13286.88	503.39	13296.41
CHALK 37N-2A-XR BHL ON PLAT REV-2 (361'FSL & 1558'FEL, SEC.35)	19796.20	90.015	181.005	6867.02	-13309.95	503.07	13319.45
CHALK 37N-2A-XR BPZ ON PLAT (460'FSL & 1558'FEL, SEC.35)	19873.33	90.015	181.005	6867.00	-13387.07	501.72	13396.47



_CHALK_37N-2A-XR__REV-B.0__PWP.las

~VERSION INFORMATION

VERS. 2.0 : CWLS LOG ASCII STANDARD-VERSION 2.0

WRAP. NO : ASCII DATA SECTION CONTAINS ONE ROW PER WELLPATH STATION

~WELL INFORMATION

#MNEM	.UNITS	DATA	:DESCRIPTION
#----	.-----	----	:-----
STRT	.ft	0.00	:START MD
STOP	.ft	19873.33	:STOP MD
STEP	.ft	0.0	:STEP (non-uniform increment)
NULL	.	-999.99	:NULL
COMP	.	SRC ENERGY	:OPERATOR
WELL	.	CHALK 37N-2A-XR	:WELL
FLD	.	WELD COUNTY (NAD83,TRUE NORTH)	:FIELD
LOC	.	COLORADO	:AREA (aka: Location)
CNTY	.	N/A	:COUNTY
STAT	.	N/A	:STATE
CTRY	.	N/A	:COUNTRY
SRVC	.	Baker Hughes	:CONTRACTOR
DATE	.	04/25/2018	:LOG REV DATE
API	.		:API NUMBER

~OTHER INFORMATION

#Software: WellArchitect(R) Version 5.0

#MNEM	.UNITS	DATA	:DESCRIPTION
#----	.-----	----	:-----
WPTYPE	.	PLANNED WELLPATH	:WELLPATH TYPE
FACILITY	.	SEC.26-T06N-R66W	:FACILITY
SLOT	.	SLOT#32 CHALK 37N-2A-XR (2330'FNL & 2151'FEL, SEC.26):SLOT	
WELLBORE	.	CHALK 37N-2A-XR PWB	:WELLBORE
WELLPATH	.	CHALK 37N-2A-XR (REV-B.0) PWP	:WELLPATH
MDREFPT	.	PROPETRO 12 (4') (RKB)	:MD REFERENCE POINT
TVDREFPT	.	PROPETRO 12 (4') (RKB)	:TVD REFERENCE POINT
LCLREFPT	.	Slot	:LOCAL COORDINATE REFERENCE PT

_CHALK_37N-2A-XR___REV-B.0__PWP.las

VSAZIMUTH.deg	177.85	:VERTICAL SECTION AZIMUTH
VSORIGN .ft	0.00	:VERTICAL SECTION ORIGIN NORTH
VSORIGE .ft	0.00	:VERTICAL SECTION ORIGIN EAST

~CURVE (WELLPATH) INFORMATION

#MNEM	.UNITS	:DESCRIPTION
#----	.-----	:-----
DEPT	.ft	:MEASURED DEPTH
INC	.deg	:INCLINATION
AZI	.deg	:AZIMUTH
TVD	.ft	:TRUE VERTICAL DEPTH
SECT	.ft	:CROSS SECTION (CURTAIN/VERTICAL)
LOCALN	.ft	:LOCAL NORTH
LOCALE	.ft	:LOCAL EAST
LAT	.deg	:LATITUDE
LONG	.deg	:LONGITUDE
DLS	.deg/100ft	:DOGLEG SEVERITY

~ASCII DATA

0.00	0.00	101.03	0.00	0.00	0.00	0.00	40.4601869	-104.7425750	0.00
4.00	0.00	101.03	4.00	0.00	0.00	0.00	40.4601869	-104.7425750	0.00
104.00	0.00	101.03	104.00	0.00	0.00	0.00	40.4601869	-104.7425750	0.00
204.00	0.00	101.03	204.00	0.00	0.00	0.00	40.4601869	-104.7425750	0.00
300.00	0.00	101.03	300.00	0.00	0.00	0.00	40.4601869	-104.7425750	0.00
304.00	0.08	101.03	304.00	0.00	0.00	0.00	40.4601869	-104.7425750	2.00
404.00	2.08	101.03	403.98	0.43	-0.36	1.85	40.4601860	-104.7425683	2.00
504.00	4.08	101.03	503.83	1.66	-1.39	7.13	40.4601831	-104.7425494	2.00
604.00	6.08	101.03	603.43	3.67	-3.08	15.82	40.4601785	-104.7425182	2.00
625.00	6.50	101.03	624.31	4.20	-3.52	18.08	40.4601773	-104.7425100	2.00
704.00	6.50	101.03	702.80	6.24	-5.24	26.85	40.4601726	-104.7424785	0.00
804.00	6.50	101.03	802.15	8.82	-7.40	37.96	40.4601666	-104.7424386	0.00
904.00	6.50	101.03	901.51	11.40	-9.57	49.08	40.4601607	-104.7423986	0.00
1004.00	6.50	101.03	1000.87	13.98	-11.73	60.19	40.4601547	-104.7423587	0.00
1104.00	6.50	101.03	1100.22	16.56	-13.90	71.30	40.4601488	-104.7423188	0.00

CHALK_37N-2A-XR REV-B.0 PWP.las

1204.00	6.50	101.03	1199.58	19.14	-16.07	82.41	40.4601428	-104.7422789	0.00
1304.00	6.50	101.03	1298.94	21.72	-18.23	93.52	40.4601369	-104.7422389	0.00
1404.00	6.50	101.03	1398.30	24.30	-20.40	104.63	40.4601309	-104.7421990	0.00
1504.00	6.50	101.03	1497.65	26.88	-22.57	115.74	40.4601250	-104.7421591	0.00
1604.00	6.50	101.03	1597.01	29.47	-24.73	126.85	40.4601191	-104.7421191	0.00
1704.00	6.50	101.03	1696.37	32.05	-26.90	137.97	40.4601131	-104.7420792	0.00
1804.00	6.50	101.03	1795.72	34.63	-29.06	149.08	40.4601072	-104.7420393	0.00
1904.00	6.50	101.03	1895.08	37.21	-31.23	160.19	40.4601012	-104.7419994	0.00
2004.00	6.50	101.03	1994.44	39.79	-33.40	171.30	40.4600953	-104.7419594	0.00
2104.00	6.50	101.03	2093.80	42.37	-35.56	182.41	40.4600893	-104.7419195	0.00
2204.00	6.50	101.03	2193.15	44.95	-37.73	193.52	40.4600834	-104.7418796	0.00
2304.00	6.50	101.03	2292.51	47.53	-39.90	204.63	40.4600774	-104.7418396	0.00
2404.00	6.50	101.03	2391.87	50.11	-42.06	215.74	40.4600715	-104.7417997	0.00
2504.00	6.50	101.03	2491.22	52.69	-44.23	226.86	40.4600655	-104.7417598	0.00
2604.00	6.50	101.03	2590.58	55.27	-46.40	237.97	40.4600596	-104.7417198	0.00
2704.00	6.50	101.03	2689.94	57.86	-48.56	249.08	40.4600536	-104.7416799	0.00
2804.00	6.50	101.03	2789.30	60.44	-50.73	260.19	40.4600477	-104.7416400	0.00
2904.00	6.50	101.03	2888.65	63.02	-52.89	271.30	40.4600418	-104.7416001	0.00
3004.00	6.50	101.03	2988.01	65.60	-55.06	282.41	40.4600358	-104.7415601	0.00
3104.00	6.50	101.03	3087.37	68.18	-57.23	293.52	40.4600299	-104.7415202	0.00
3204.00	6.50	101.03	3186.72	70.76	-59.39	304.63	40.4600239	-104.7414803	0.00
3304.00	6.50	101.03	3286.08	73.34	-61.56	315.75	40.4600180	-104.7414403	0.00
3404.00	6.50	101.03	3385.44	75.92	-63.73	326.86	40.4600120	-104.7414004	0.00
3504.00	6.50	101.03	3484.80	78.50	-65.89	337.97	40.4600061	-104.7413605	0.00
3604.00	6.50	101.03	3584.15	81.08	-68.06	349.08	40.4600001	-104.7413206	0.00
3704.00	6.50	101.03	3683.51	83.66	-70.22	360.19	40.4599942	-104.7412806	0.00
3804.00	6.50	101.03	3782.87	86.25	-72.39	371.30	40.4599882	-104.7412407	0.00
3904.00	6.50	101.03	3882.22	88.83	-74.56	382.41	40.4599823	-104.7412008	0.00
4004.00	6.50	101.03	3981.58	91.41	-76.72	393.53	40.4599763	-104.7411608	0.00
4104.00	6.50	101.03	4080.94	93.99	-78.89	404.64	40.4599704	-104.7411209	0.00
4204.00	6.50	101.03	4180.30	96.57	-81.06	415.75	40.4599644	-104.7410810	0.00
4304.00	6.50	101.03	4279.65	99.15	-83.22	426.86	40.4599585	-104.7410411	0.00
4404.00	6.50	101.03	4379.01	101.73	-85.39	437.97	40.4599526	-104.7410011	0.00
4504.00	6.50	101.03	4478.37	104.31	-87.55	449.08	40.4599466	-104.7409612	0.00

				<u>_CHALK_37N-2A-XR</u>	<u>REV-B.0</u>	<u>PWP.las</u>			
4604.00	6.50	101.03	4577.72	106.89	-89.72	460.19	40.4599407	-104.7409213	0.00
4704.00	6.50	101.03	4677.08	109.47	-91.89	471.30	40.4599347	-104.7408813	0.00
4804.00	6.50	101.03	4776.44	112.06	-94.05	482.42	40.4599288	-104.7408414	0.00
4904.00	6.50	101.03	4875.80	114.64	-96.22	493.53	40.4599228	-104.7408015	0.00
5004.00	6.50	101.03	4975.15	117.22	-98.39	504.64	40.4599169	-104.7407615	0.00
5104.00	6.50	101.03	5074.51	119.80	-100.55	515.75	40.4599109	-104.7407216	0.00
5204.00	6.50	101.03	5173.87	122.38	-102.72	526.86	40.4599050	-104.7406817	0.00
5304.00	6.50	101.03	5273.23	124.96	-104.89	537.97	40.4598990	-104.7406418	0.00
5404.00	6.50	101.03	5372.58	127.54	-107.05	549.08	40.4598931	-104.7406018	0.00
5504.00	6.50	101.03	5471.94	130.12	-109.22	560.19	40.4598871	-104.7405619	0.00
5604.00	6.50	101.03	5571.30	132.70	-111.38	571.31	40.4598812	-104.7405220	0.00
5704.00	6.50	101.03	5670.65	135.28	-113.55	582.42	40.4598752	-104.7404820	0.00
5804.00	6.50	101.03	5770.01	137.86	-115.72	593.53	40.4598693	-104.7404421	0.00
5904.00	6.50	101.03	5869.37	140.45	-117.88	604.64	40.4598634	-104.7404022	0.00
6004.00	6.50	101.03	5968.73	143.03	-120.05	615.75	40.4598574	-104.7403623	0.00
6104.00	6.50	101.03	6068.08	145.61	-122.22	626.86	40.4598515	-104.7403223	0.00
6204.00	6.50	101.03	6167.44	148.19	-124.38	637.97	40.4598455	-104.7402824	0.00
6257.82	6.50	101.03	6220.91	149.58	-125.55	643.95	40.4598423	-104.7402609	0.00
6304.00	8.30	130.66	6266.72	152.44	-128.22	649.05	40.4598350	-104.7402426	9.00
6404.00	15.63	157.30	6364.55	170.00	-145.39	659.75	40.4597878	-104.7402042	9.00
6504.00	24.11	166.41	6458.53	202.70	-177.74	669.77	40.4596990	-104.7401682	9.00
6604.00	32.85	170.93	6546.35	249.74	-224.48	678.86	40.4595708	-104.7401355	9.00
6704.00	41.70	173.70	6625.85	309.97	-284.44	686.81	40.4594062	-104.7401069	9.00
6804.00	50.59	175.64	6695.07	381.89	-356.17	693.41	40.4592093	-104.7400832	9.00
6904.00	59.51	177.14	6752.30	463.74	-437.89	698.51	40.4589850	-104.7400649	9.00
7004.00	68.44	178.39	6796.14	553.51	-527.59	701.98	40.4587388	-104.7400524	9.00
7104.00	77.38	179.49	6825.51	648.97	-623.05	703.73	40.4584767	-104.7400462	9.00
7204.00	86.32	180.51	6839.68	747.79	-721.94	703.72	40.4582053	-104.7400462	9.00
7243.85	89.88	180.91	6841.00	787.56	-761.75	703.22	40.4580960	-104.7400480	9.00
7304.00	89.88	180.91	6841.12	847.63	-821.90	702.26	40.4579309	-104.7400515	0.00
7404.00	89.88	180.91	6841.33	947.48	-921.89	700.66	40.4576565	-104.7400572	0.00
7504.00	89.88	180.91	6841.54	1047.34	-1021.88	699.07	40.4573820	-104.7400629	0.00
7604.00	89.88	180.91	6841.75	1147.20	-1121.86	697.47	40.4571076	-104.7400687	0.00
7704.00	89.88	180.91	6841.96	1247.05	-1221.85	695.88	40.4568331	-104.7400744	0.00

				CHALK_37N-2A-XR	REV-B.0	PWP.las		
7804.00	89.88	180.91	6842.16	1346.91	-1321.84	694.28	40.4565586	-104.7400802 0.00
7904.00	89.88	180.91	6842.37	1446.77	-1421.82	692.69	40.4562842	-104.7400859 0.00
8004.00	89.88	180.91	6842.58	1546.63	-1521.81	691.09	40.4560097	-104.7400916 0.00
8104.00	89.88	180.91	6842.79	1646.48	-1621.80	689.50	40.4557353	-104.7400974 0.00
8204.00	89.88	180.91	6842.99	1746.34	-1721.78	687.90	40.4554608	-104.7401031 0.00
8304.00	89.88	180.91	6843.20	1846.20	-1821.77	686.31	40.4551864	-104.7401089 0.00
8404.00	89.88	180.91	6843.41	1946.05	-1921.76	684.71	40.4549119	-104.7401146 0.00
8504.00	89.88	180.91	6843.62	2045.91	-2021.75	683.12	40.4546375	-104.7401204 0.00
8604.00	89.88	180.91	6843.82	2145.77	-2121.73	681.52	40.4543630	-104.7401261 0.00
8704.00	89.88	180.91	6844.03	2245.63	-2221.72	679.93	40.4540886	-104.7401318 0.00
8804.00	89.88	180.91	6844.24	2345.48	-2321.71	678.33	40.4538141	-104.7401376 0.00
8904.00	89.88	180.91	6844.45	2445.34	-2421.69	676.74	40.4535397	-104.7401433 0.00
9004.00	89.88	180.91	6844.66	2545.20	-2521.68	675.14	40.4532652	-104.7401491 0.00
9104.00	89.88	180.91	6844.86	2645.05	-2621.67	673.55	40.4529908	-104.7401548 0.00
9204.00	89.88	180.91	6845.07	2744.91	-2721.66	671.95	40.4527163	-104.7401606 0.00
9304.00	89.88	180.91	6845.28	2844.77	-2821.64	670.36	40.4524419	-104.7401663 0.00
9404.00	89.88	180.91	6845.49	2944.63	-2921.63	668.76	40.4521674	-104.7401720 0.00
9504.00	89.88	180.91	6845.69	3044.48	-3021.62	667.17	40.4518930	-104.7401778 0.00
9604.00	89.88	180.91	6845.90	3144.34	-3121.60	665.57	40.4516185	-104.7401835 0.00
9704.00	89.88	180.91	6846.11	3244.20	-3221.59	663.98	40.4513441	-104.7401893 0.00
9804.00	89.88	180.91	6846.32	3344.05	-3321.58	662.38	40.4510696	-104.7401950 0.00
9904.00	89.88	180.91	6846.52	3443.91	-3421.56	660.79	40.4507952	-104.7402007 0.00
9968.85	89.88	180.91	6846.66	3508.66	-3486.40	659.75	40.4506172	-104.7402045 0.00
10004.00	89.88	181.62	6846.73	3543.76	-3521.55	658.98	40.4505207	-104.7402073 2.00
10104.00	89.88	183.62	6846.94	3643.41	-3621.44	654.41	40.4502465	-104.7402237 2.00
10204.00	89.88	185.62	6847.15	3742.70	-3721.11	646.36	40.4499729	-104.7402526 2.00
10278.14	89.88	187.10	6847.30	3816.03	-3794.79	638.15	40.4497707	-104.7402821 2.00
10304.00	89.88	187.10	6847.36	3841.55	-3820.45	634.95	40.4497003	-104.7402936 0.00
10404.00	89.88	187.10	6847.56	3940.25	-3919.68	622.59	40.4494279	-104.7403380 0.00
10478.14	89.88	187.10	6847.72	4013.43	-3993.26	613.43	40.4492259	-104.7403710 0.00
10504.00	89.88	186.58	6847.77	4038.97	-4018.93	610.35	40.4491555	-104.7403820 2.00
10604.00	89.88	184.58	6847.98	4138.06	-4118.45	600.62	40.4488823	-104.7404170 2.00
10704.00	89.88	182.58	6848.19	4237.55	-4218.25	594.37	40.4486084	-104.7404394 2.00
10804.00	89.88	180.58	6848.40	4337.33	-4318.21	591.61	40.4483340	-104.7404494 2.00

				<u>CHALK_37N-2A-XR</u>	<u>REV-B.0</u>	<u>PWP.las</u>			
10804.97	89.88	180.56	6848.40	4338.30	-4319.17	591.60	40.4483313	-104.7404494	2.00
10904.00	89.88	180.56	6848.60	4437.22	-4418.20	590.63	40.4480595	-104.7404529	0.00
11004.00	89.88	180.56	6848.81	4537.11	-4518.20	589.64	40.4477850	-104.7404565	0.00
11104.00	89.88	180.56	6849.02	4637.00	-4618.19	588.66	40.4475106	-104.7404600	0.00
11204.00	89.88	180.56	6849.22	4736.89	-4718.19	587.67	40.4472361	-104.7404635	0.00
11304.00	89.88	180.56	6849.43	4836.77	-4818.18	586.69	40.4469616	-104.7404671	0.00
11404.00	89.88	180.56	6849.64	4936.66	-4918.18	585.71	40.4466871	-104.7404706	0.00
11504.00	89.88	180.56	6849.85	5036.55	-5018.17	584.72	40.4464127	-104.7404742	0.00
11604.00	89.88	180.56	6850.05	5136.44	-5118.17	583.74	40.4461382	-104.7404777	0.00
11704.00	89.88	180.56	6850.26	5236.33	-5218.16	582.76	40.4458637	-104.7404813	0.00
11804.00	89.88	180.56	6850.47	5336.21	-5318.16	581.77	40.4455892	-104.7404848	0.00
11904.00	89.88	180.56	6850.68	5436.10	-5418.15	580.79	40.4453148	-104.7404883	0.00
12004.00	89.88	180.56	6850.88	5535.99	-5518.15	579.81	40.4450403	-104.7404919	0.00
12104.00	89.88	180.56	6851.09	5635.88	-5618.14	578.82	40.4447658	-104.7404954	0.00
12204.00	89.88	180.56	6851.30	5735.77	-5718.14	577.84	40.4444914	-104.7404990	0.00
12304.00	89.88	180.56	6851.51	5835.65	-5818.13	576.86	40.4442169	-104.7405025	0.00
12404.00	89.88	180.56	6851.71	5935.54	-5918.13	575.87	40.4439424	-104.7405061	0.00
12504.00	89.88	180.56	6851.92	6035.43	-6018.12	574.89	40.4436679	-104.7405096	0.00
12604.00	89.88	180.56	6852.13	6135.32	-6118.12	573.90	40.4433935	-104.7405131	0.00
12704.00	89.88	180.56	6852.34	6235.21	-6218.11	572.92	40.4431190	-104.7405167	0.00
12804.00	89.88	180.56	6852.54	6335.09	-6318.11	571.94	40.4428445	-104.7405202	0.00
12904.00	89.88	180.56	6852.75	6434.98	-6418.10	570.95	40.4425700	-104.7405238	0.00
13004.00	89.88	180.56	6852.96	6534.87	-6518.10	569.97	40.4422956	-104.7405273	0.00
13104.00	89.88	180.56	6853.17	6634.76	-6618.09	568.99	40.4420211	-104.7405308	0.00
13204.00	89.88	180.56	6853.37	6734.65	-6718.09	568.00	40.4417466	-104.7405344	0.00
13304.00	89.88	180.56	6853.58	6834.53	-6818.08	567.02	40.4414721	-104.7405379	0.00
13404.00	89.88	180.56	6853.79	6934.42	-6918.08	566.04	40.4411977	-104.7405415	0.00
13504.00	89.88	180.56	6854.00	7034.31	-7018.07	565.05	40.4409232	-104.7405450	0.00
13604.00	89.88	180.56	6854.20	7134.20	-7118.07	564.07	40.4406487	-104.7405486	0.00
13704.00	89.88	180.56	6854.41	7234.09	-7218.06	563.09	40.4403742	-104.7405521	0.00
13804.00	89.88	180.56	6854.62	7333.97	-7318.06	562.10	40.4400998	-104.7405556	0.00
13904.00	89.88	180.56	6854.83	7433.86	-7418.05	561.12	40.4398253	-104.7405592	0.00
14004.00	89.88	180.56	6855.03	7533.75	-7518.05	560.13	40.4395508	-104.7405627	0.00
14104.00	89.88	180.56	6855.24	7633.64	-7618.04	559.15	40.4392763	-104.7405663	0.00

				<u>_CHALK_37N-2A-XR</u>	<u>REV-B.0</u>	<u>PWP.las</u>			
14204.00	89.88	180.56	6855.45	7733.53	-7718.04	558.17	40.4390019	-104.7405698	0.00
14304.00	89.88	180.56	6855.66	7833.41	-7818.03	557.18	40.4387274	-104.7405733	0.00
14404.00	89.88	180.56	6855.86	7933.30	-7918.03	556.20	40.4384529	-104.7405769	0.00
14504.00	89.88	180.56	6856.07	8033.19	-8018.02	555.22	40.4381784	-104.7405804	0.00
14604.00	89.88	180.56	6856.28	8133.08	-8118.02	554.23	40.4379040	-104.7405840	0.00
14704.00	89.88	180.56	6856.49	8232.97	-8218.01	553.25	40.4376295	-104.7405875	0.00
14804.00	89.88	180.56	6856.69	8332.85	-8318.01	552.27	40.4373550	-104.7405911	0.00
14904.00	89.88	180.56	6856.90	8432.74	-8418.00	551.28	40.4370805	-104.7405946	0.00
15004.00	89.88	180.56	6857.11	8532.63	-8518.00	550.30	40.4368061	-104.7405981	0.00
15104.00	89.88	180.56	6857.31	8632.52	-8617.99	549.31	40.4365316	-104.7406017	0.00
15204.00	89.88	180.56	6857.52	8732.40	-8717.99	548.33	40.4362571	-104.7406052	0.00
15304.00	89.88	180.56	6857.73	8832.29	-8817.98	547.35	40.4359826	-104.7406088	0.00
15404.00	89.88	180.56	6857.94	8932.18	-8917.98	546.36	40.4357082	-104.7406123	0.00
15504.00	89.88	180.56	6858.14	9032.07	-9017.97	545.38	40.4354337	-104.7406158	0.00
15604.00	89.88	180.56	6858.35	9131.96	-9117.96	544.40	40.4351592	-104.7406194	0.00
15704.00	89.88	180.56	6858.56	9231.84	-9217.96	543.41	40.4348847	-104.7406229	0.00
15804.00	89.88	180.56	6858.77	9331.73	-9317.95	542.43	40.4346103	-104.7406265	0.00
15904.00	89.88	180.56	6858.97	9431.62	-9417.95	541.45	40.4343358	-104.7406300	0.00
16004.00	89.88	180.56	6859.18	9531.51	-9517.94	540.46	40.4340613	-104.7406336	0.00
16104.00	89.88	180.56	6859.39	9631.40	-9617.94	539.48	40.4337868	-104.7406371	0.00
16204.00	89.88	180.56	6859.60	9731.28	-9717.93	538.50	40.4335124	-104.7406406	0.00
16304.00	89.88	180.56	6859.80	9831.17	-9817.93	537.51	40.4332379	-104.7406442	0.00
16404.00	89.88	180.56	6860.01	9931.06	-9917.92	536.53	40.4329634	-104.7406477	0.00
16504.00	89.88	180.56	6860.22	10030.95	-10017.92	535.54	40.4326889	-104.7406513	0.00
16604.00	89.88	180.56	6860.43	10130.84	-10117.91	534.56	40.4324145	-104.7406548	0.00
16704.00	89.88	180.56	6860.63	10230.72	-10217.91	533.58	40.4321400	-104.7406583	0.00
16804.00	89.88	180.56	6860.84	10330.61	-10317.90	532.59	40.4318655	-104.7406619	0.00
16904.00	89.88	180.56	6861.05	10430.50	-10417.90	531.61	40.4315910	-104.7406654	0.00
17004.00	89.88	180.56	6861.26	10530.39	-10517.89	530.63	40.4313166	-104.7406690	0.00
17104.00	89.88	180.56	6861.46	10630.28	-10617.89	529.64	40.4310421	-104.7406725	0.00
17204.00	89.88	180.56	6861.67	10730.16	-10717.88	528.66	40.4307676	-104.7406760	0.00
17304.00	89.88	180.56	6861.88	10830.05	-10817.88	527.68	40.4304931	-104.7406796	0.00
17404.00	89.88	180.56	6862.09	10929.94	-10917.87	526.69	40.4302187	-104.7406831	0.00
17504.00	89.88	180.56	6862.29	11029.83	-11017.87	525.71	40.4299442	-104.7406867	0.00

				<u>_CHALK_37N-2A-XR</u>	<u>REV-B.0</u>	<u>PWP.las</u>			
17604.00	89.88	180.56	6862.50	11129.72	-11117.86	524.73	40.4296697	-104.7406902	0.00
17704.00	89.88	180.56	6862.71	11229.60	-11217.86	523.74	40.4293952	-104.7406937	0.00
17804.00	89.88	180.56	6862.92	11329.49	-11317.85	522.76	40.4291208	-104.7406973	0.00
17904.00	89.88	180.56	6863.12	11429.38	-11417.85	521.77	40.4288463	-104.7407008	0.00
18004.00	89.88	180.56	6863.33	11529.27	-11517.84	520.79	40.4285718	-104.7407044	0.00
18104.00	89.88	180.56	6863.54	11629.16	-11617.84	519.81	40.4282973	-104.7407079	0.00
18204.00	89.88	180.56	6863.75	11729.04	-11717.83	518.82	40.4280229	-104.7407114	0.00
18304.00	89.88	180.56	6863.95	11828.93	-11817.83	517.84	40.4277484	-104.7407150	0.00
18404.00	89.88	180.56	6864.16	11928.82	-11917.82	516.86	40.4274739	-104.7407185	0.00
18504.00	89.88	180.56	6864.37	12028.71	-12017.82	515.87	40.4271994	-104.7407221	0.00
18604.00	89.88	180.56	6864.57	12128.60	-12117.81	514.89	40.4269250	-104.7407256	0.00
18704.00	89.88	180.56	6864.78	12228.48	-12217.81	513.91	40.4266505	-104.7407292	0.00
18804.00	89.88	180.56	6864.99	12328.37	-12317.80	512.92	40.4263760	-104.7407327	0.00
18904.00	89.88	180.56	6865.20	12428.26	-12417.80	511.94	40.4261015	-104.7407362	0.00
19004.00	89.88	180.56	6865.40	12528.15	-12517.79	510.96	40.4258271	-104.7407398	0.00
19104.00	89.88	180.56	6865.61	12628.04	-12617.79	509.97	40.4255526	-104.7407433	0.00
19204.00	89.88	180.56	6865.82	12727.92	-12717.78	508.99	40.4252781	-104.7407469	0.00
19304.00	89.88	180.56	6866.03	12827.81	-12817.78	508.00	40.4250036	-104.7407504	0.00
19404.00	89.88	180.56	6866.23	12927.70	-12917.77	507.02	40.4247292	-104.7407539	0.00
19504.00	89.88	180.56	6866.44	13027.59	-13017.77	506.04	40.4244547	-104.7407575	0.00
19604.00	89.88	180.56	6866.65	13127.48	-13117.76	505.05	40.4241802	-104.7407610	0.00
19704.00	89.88	180.56	6866.86	13227.36	-13217.76	504.07	40.4239057	-104.7407646	0.00
19773.13	89.88	180.56	6867.00	13296.41	-13286.88	503.39	40.4237160	-104.7407670	0.00
19796.20	90.02	181.01	6867.02	13319.45	-13309.95	503.07	40.4236527	-104.7407681	2.00
19804.00	90.02	181.01	6867.02	13327.24	-13317.75	502.94	40.4236313	-104.7407686	0.00
19873.33	90.02	181.01	6867.00	13396.47	-13387.07	501.72	40.4234410	-104.7407730	0.00



Planned Wellpath Report

CHALK 37N-2A-XR (REV-B.0) PWP

Page 1 of 11



REFERENCE WELLPATH IDENTIFICATION

Operator	SRC ENERGY	Slot	SLOT#32 CHALK 37N-2A-XR (2330'FNL & 2151'FEL, SEC.26)
Area	COLORADO	Well	CHALK 37N-2A-XR
Field	WELD COUNTY (NAD83,TRUE NORTH)	Wellbore	CHALK 37N-2A-XR PWB
Facility	SEC.26-T06N-R66W		

REPORT SETUP INFORMATION

Projection System	NAD83 / Lambert Colorado SP, Northern Zone (501), US feet	Software System	WellArchitect® 5.0
North Reference	True	User	Doddanna
Scale	0.999964	Report Generated	8/8/2018 at 9:53:42 AM
Convergence at slot	0.49° East	Database/Source file	WellArchitectDB2/_CHALK_37N-2A-XR__REV-B.0__PWP.xml

WELLPATH LOCATION

	Local coordinates		Grid coordinates		Geographic coordinates	
	North[ft]	East[ft]	Easting[US ft]	Northing[US ft]	Latitude	Longitude
Slot Location	-617.91	-552.91	3210760.86	1411386.58	40°27'36.673"N	104°44'33.270"W
Facility Reference Pt			3211308.44	1412009.18	40°27'42.779"N	104°44'26.117"W
Field Reference Pt			3171284.48	1426358.81	40°30'07.643"N	104°53'02.634"W

WELLPATH DATUM

Calculation method	Minimum curvature	PROPETRO 12 (4') (RKB) to Facility Vertical Datum	4700.00ft
Horizontal Reference Pt	Slot	PROPETRO 12 (4') (RKB) to Mean Sea Level	4700.00ft
Vertical Reference Pt	PROPETRO 12 (4') (RKB)	PROPETRO 12 (4') (RKB) to Mud Line at Slot (SLOT#32 CHALK 37N-2A-XR (2330'FNL & 2151'FEL, SEC.26))	4700.00ft
MD Reference Pt	PROPETRO 12 (4') (RKB)	Section Origin	N 0.00, E 0.00 ft
Field Vertical Reference	Mean Sea Level	Section Azimuth	177.85°



Planned Wellpath Report

CHALK 37N-2A-XR (REV-B.0) PWP

Page 2 of 11



REFERENCE WELLPATH IDENTIFICATION			
Operator	SRC ENERGY	Slot	SLOT#32 CHALK 37N-2A-XR (2330'FNL & 2151'FEL, SEC.26)
Area	COLORADO	Well	CHALK 37N-2A-XR
Field	WELD COUNTY (NAD83,TRUE NORTH)	Wellbore	CHALK 37N-2A-XR PWB
Facility	SEC.26-T06N-R66W		

WELLPATH DATA (211 stations) † = interpolated/extrapolated station								
MD [ft]	Inclination [°]	Azimuth [°]	TVD [ft]	Vert Sect [ft]	North [ft]	East [ft]	DLS [°/100ft]	Comments
0.00†	0.000	101.032	0.00	0.00	0.00	0.00	0.00	
4.00	0.000	101.032	4.00	0.00	0.00	0.00	0.00	Tie On
104.00†	0.000	101.032	104.00	0.00	0.00	0.00	0.00	
204.00†	0.000	101.032	204.00	0.00	0.00	0.00	0.00	
300.00	0.000	101.032	300.00	0.00	0.00	0.00	0.00	End of Tangent
304.00†	0.080	101.032	304.00	0.00	0.00	0.00	2.00	
404.00†	2.080	101.032	403.98	0.43	-0.36	1.85	2.00	
504.00†	4.080	101.032	503.83	1.66	-1.39	7.13	2.00	
604.00†	6.080	101.032	603.43	3.67	-3.08	15.82	2.00	
625.00	6.500	101.032	624.31	4.20	-3.52	18.08	2.00	End of Build
704.00†	6.500	101.032	702.80	6.24	-5.24	26.85	0.00	
804.00†	6.500	101.032	802.15	8.82	-7.40	37.96	0.00	
904.00†	6.500	101.032	901.51	11.40	-9.57	49.08	0.00	
1004.00†	6.500	101.032	1000.87	13.98	-11.73	60.19	0.00	
1104.00†	6.500	101.032	1100.22	16.56	-13.90	71.30	0.00	
1204.00†	6.500	101.032	1199.58	19.14	-16.07	82.41	0.00	
1304.00†	6.500	101.032	1298.94	21.72	-18.23	93.52	0.00	
1404.00†	6.500	101.032	1398.30	24.30	-20.40	104.63	0.00	
1504.00†	6.500	101.032	1497.65	26.88	-22.57	115.74	0.00	
1604.00†	6.500	101.032	1597.01	29.47	-24.73	126.85	0.00	
1704.00†	6.500	101.032	1696.37	32.05	-26.90	137.97	0.00	
1804.00†	6.500	101.032	1795.72	34.63	-29.06	149.08	0.00	
1904.00†	6.500	101.032	1895.08	37.21	-31.23	160.19	0.00	
2004.00†	6.500	101.032	1994.44	39.79	-33.40	171.30	0.00	
2104.00†	6.500	101.032	2093.80	42.37	-35.56	182.41	0.00	
2204.00†	6.500	101.032	2193.15	44.95	-37.73	193.52	0.00	
2304.00†	6.500	101.032	2292.51	47.53	-39.90	204.63	0.00	
2404.00†	6.500	101.032	2391.87	50.11	-42.06	215.74	0.00	
2504.00†	6.500	101.032	2491.22	52.69	-44.23	226.86	0.00	
2604.00†	6.500	101.032	2590.58	55.27	-46.40	237.97	0.00	



Planned Wellpath Report

CHALK 37N-2A-XR (REV-B.0) PWP

Page 3 of 11



REFERENCE WELLPATH IDENTIFICATION			
Operator	SRC ENERGY	Slot	SLOT#32 CHALK 37N-2A-XR (2330'FNL & 2151'FEL, SEC.26)
Area	COLORADO	Well	CHALK 37N-2A-XR
Field	WELD COUNTY (NAD83,TRUE NORTH)	Wellbore	CHALK 37N-2A-XR PWB
Facility	SEC.26-T06N-R66W		

WELLPATH DATA (211 stations) † = interpolated/extrapolated station								
MD [ft]	Inclination [°]	Azimuth [°]	TVD [ft]	Vert Sect [ft]	North [ft]	East [ft]	DLS [°/100ft]	Comments
2704.00†	6.500	101.032	2689.94	57.86	-48.56	249.08	0.00	
2804.00†	6.500	101.032	2789.30	60.44	-50.73	260.19	0.00	
2904.00†	6.500	101.032	2888.65	63.02	-52.89	271.30	0.00	
3004.00†	6.500	101.032	2988.01	65.60	-55.06	282.41	0.00	
3104.00†	6.500	101.032	3087.37	68.18	-57.23	293.52	0.00	
3204.00†	6.500	101.032	3186.72	70.76	-59.39	304.63	0.00	
3304.00†	6.500	101.032	3286.08	73.34	-61.56	315.75	0.00	
3404.00†	6.500	101.032	3385.44	75.92	-63.73	326.86	0.00	
3504.00†	6.500	101.032	3484.80	78.50	-65.89	337.97	0.00	
3604.00†	6.500	101.032	3584.15	81.08	-68.06	349.08	0.00	
3704.00†	6.500	101.032	3683.51	83.66	-70.22	360.19	0.00	
3804.00†	6.500	101.032	3782.87	86.25	-72.39	371.30	0.00	
3904.00†	6.500	101.032	3882.22	88.83	-74.56	382.41	0.00	
4004.00†	6.500	101.032	3981.58	91.41	-76.72	393.53	0.00	
4104.00†	6.500	101.032	4080.94	93.99	-78.89	404.64	0.00	
4204.00†	6.500	101.032	4180.30	96.57	-81.06	415.75	0.00	
4304.00†	6.500	101.032	4279.65	99.15	-83.22	426.86	0.00	
4404.00†	6.500	101.032	4379.01	101.73	-85.39	437.97	0.00	
4504.00†	6.500	101.032	4478.37	104.31	-87.55	449.08	0.00	
4604.00†	6.500	101.032	4577.72	106.89	-89.72	460.19	0.00	
4704.00†	6.500	101.032	4677.08	109.47	-91.89	471.30	0.00	
4804.00†	6.500	101.032	4776.44	112.06	-94.05	482.42	0.00	
4904.00†	6.500	101.032	4875.80	114.64	-96.22	493.53	0.00	
5004.00†	6.500	101.032	4975.15	117.22	-98.39	504.64	0.00	
5104.00†	6.500	101.032	5074.51	119.80	-100.55	515.75	0.00	
5204.00†	6.500	101.032	5173.87	122.38	-102.72	526.86	0.00	
5304.00†	6.500	101.032	5273.23	124.96	-104.89	537.97	0.00	
5404.00†	6.500	101.032	5372.58	127.54	-107.05	549.08	0.00	
5504.00†	6.500	101.032	5471.94	130.12	-109.22	560.19	0.00	
5604.00†	6.500	101.032	5571.30	132.70	-111.38	571.31	0.00	



Planned Wellpath Report

CHALK 37N-2A-XR (REV-B.0) PWP

Page 4 of 11



REFERENCE WELLPATH IDENTIFICATION			
Operator	SRC ENERGY	Slot	SLOT#32 CHALK 37N-2A-XR (2330'FNL & 2151'FEL, SEC.26)
Area	COLORADO	Well	CHALK 37N-2A-XR
Field	WELD COUNTY (NAD83,TRUE NORTH)	Wellbore	CHALK 37N-2A-XR PWB
Facility	SEC.26-T06N-R66W		

WELLPATH DATA (211 stations) † = interpolated/extrapolated station								
MD [ft]	Inclination [°]	Azimuth [°]	TVD [ft]	Vert Sect [ft]	North [ft]	East [ft]	DLS [°/100ft]	Comments
5704.00†	6.500	101.032	5670.65	135.28	-113.55	582.42	0.00	
5804.00†	6.500	101.032	5770.01	137.86	-115.72	593.53	0.00	
5904.00†	6.500	101.032	5869.37	140.45	-117.88	604.64	0.00	
6004.00†	6.500	101.032	5968.73	143.03	-120.05	615.75	0.00	
6104.00†	6.500	101.032	6068.08	145.61	-122.22	626.86	0.00	
6204.00†	6.500	101.032	6167.44	148.19	-124.38	637.97	0.00	
6257.82	6.500	101.032	6220.91	149.58	-125.55	643.95	0.00	End of Tangent
6304.00†	8.299	130.664	6266.72	152.44	-128.22	649.05	9.00	
6404.00†	15.634	157.298	6364.55	170.00	-145.39	659.75	9.00	
6504.00†	24.110	166.412	6458.53	202.70	-177.74	669.77	9.00	
6604.00†	32.855	170.925	6546.35	249.74	-224.48	678.86	9.00	
6704.00†	41.699	173.695	6625.85	309.97	-284.44	686.81	9.00	
6804.00†	50.590	175.639	6695.07	381.89	-356.17	693.41	9.00	
6904.00†	59.506	177.140	6752.30	463.74	-437.89	698.51	9.00	
7004.00†	68.436	178.387	6796.14	553.51	-527.59	701.98	9.00	
7104.00†	77.375	179.488	6825.51	648.97	-623.05	703.73	9.00	
7204.00†	86.317	180.514	6839.68	747.79	-721.94	703.72	9.00	
7243.85	89.881	180.914	6841.00†	787.56	-761.75	703.22	9.00	End of 3D Arc
7304.00†	89.881	180.914	6841.12	847.63	-821.90	702.26	0.00	
7404.00†	89.881	180.914	6841.33	947.48	-921.89	700.66	0.00	
7504.00†	89.881	180.914	6841.54	1047.34	-1021.88	699.07	0.00	
7604.00†	89.881	180.914	6841.75	1147.20	-1121.86	697.47	0.00	
7704.00†	89.881	180.914	6841.96	1247.05	-1221.85	695.88	0.00	
7804.00†	89.881	180.914	6842.16	1346.91	-1321.84	694.28	0.00	
7904.00†	89.881	180.914	6842.37	1446.77	-1421.82	692.69	0.00	
8004.00†	89.881	180.914	6842.58	1546.63	-1521.81	691.09	0.00	
8104.00†	89.881	180.914	6842.79	1646.48	-1621.80	689.50	0.00	
8204.00†	89.881	180.914	6842.99	1746.34	-1721.78	687.90	0.00	
8304.00†	89.881	180.914	6843.20	1846.20	-1821.77	686.31	0.00	
8404.00†	89.881	180.914	6843.41	1946.05	-1921.76	684.71	0.00	



Planned Wellpath Report

CHALK 37N-2A-XR (REV-B.0) PWP

Page 5 of 11



REFERENCE WELLPATH IDENTIFICATION			
Operator	SRC ENERGY	Slot	SLOT#32 CHALK 37N-2A-XR (2330'FNL & 2151'FEL, SEC.26)
Area	COLORADO	Well	CHALK 37N-2A-XR
Field	WELD COUNTY (NAD83,TRUE NORTH)	Wellbore	CHALK 37N-2A-XR PWB
Facility	SEC.26-T06N-R66W		

WELLPATH DATA (211 stations) † = interpolated/extrapolated station								
MD [ft]	Inclination [°]	Azimuth [°]	TVD [ft]	Vert Sect [ft]	North [ft]	East [ft]	DLS [°/100ft]	Comments
8504.00†	89.881	180.914	6843.62	2045.91	-2021.75	683.12	0.00	
8604.00†	89.881	180.914	6843.82	2145.77	-2121.73	681.52	0.00	
8704.00†	89.881	180.914	6844.03	2245.63	-2221.72	679.93	0.00	
8804.00†	89.881	180.914	6844.24	2345.48	-2321.71	678.33	0.00	
8904.00†	89.881	180.914	6844.45	2445.34	-2421.69	676.74	0.00	
9004.00†	89.881	180.914	6844.66	2545.20	-2521.68	675.14	0.00	
9104.00†	89.881	180.914	6844.86	2645.05	-2621.67	673.55	0.00	
9204.00†	89.881	180.914	6845.07	2744.91	-2721.66	671.95	0.00	
9304.00†	89.881	180.914	6845.28	2844.77	-2821.64	670.36	0.00	
9404.00†	89.881	180.914	6845.49	2944.63	-2921.63	668.76	0.00	
9504.00†	89.881	180.914	6845.69	3044.48	-3021.62	667.17	0.00	
9604.00†	89.881	180.914	6845.90	3144.34	-3121.60	665.57	0.00	
9704.00†	89.881	180.914	6846.11	3244.20	-3221.59	663.98	0.00	
9804.00†	89.881	180.914	6846.32	3344.05	-3321.58	662.38	0.00	
9904.00†	89.881	180.914	6846.52	3443.91	-3421.56	660.79	0.00	
9968.85	89.881	180.914	6846.66	3508.66	-3486.40	659.75	0.00	End of Tangent
10004.00†	89.881	181.617	6846.73	3543.76	-3521.55	658.98	2.00	
10104.00†	89.881	183.617	6846.94	3643.41	-3621.44	654.41	2.00	
10204.00†	89.881	185.617	6847.15	3742.70	-3721.11	646.36	2.00	
10278.14	89.881	187.100	6847.30	3816.03	-3794.79	638.15	2.00	End of 3D Arc
10304.00†	89.881	187.100	6847.36	3841.55	-3820.45	634.95	0.00	
10404.00†	89.881	187.100	6847.56	3940.25	-3919.68	622.59	0.00	
10478.14	89.881	187.100	6847.72	4013.43	-3993.26	613.43	0.00	End of Tangent
10504.00†	89.881	186.583	6847.77	4038.97	-4018.93	610.35	2.00	
10604.00†	89.881	184.583	6847.98	4138.06	-4118.45	600.62	2.00	
10704.00†	89.881	182.583	6848.19	4237.55	-4218.25	594.37	2.00	
10804.00†	89.881	180.583	6848.40	4337.33	-4318.21	591.61	2.00	
10804.97	89.881	180.564	6848.40	4338.30	-4319.17	591.60	2.00	End of 3D Arc
10904.00†	89.881	180.564	6848.60	4437.22	-4418.20	590.63	0.00	
11004.00†	89.881	180.564	6848.81	4537.11	-4518.20	589.64	0.00	



Planned Wellpath Report

CHALK 37N-2A-XR (REV-B.0) PWP

Page 6 of 11



REFERENCE WELLPATH IDENTIFICATION			
Operator	SRC ENERGY	Slot	SLOT#32 CHALK 37N-2A-XR (2330'FNL & 2151'FEL, SEC.26)
Area	COLORADO	Well	CHALK 37N-2A-XR
Field	WELD COUNTY (NAD83,TRUE NORTH)	Wellbore	CHALK 37N-2A-XR PWB
Facility	SEC.26-T06N-R66W		

WELLPATH DATA (211 stations) † = interpolated/extrapolated station								
MD [ft]	Inclination [°]	Azimuth [°]	TVD [ft]	Vert Sect [ft]	North [ft]	East [ft]	DLS [°/100ft]	Comments
11104.00†	89.881	180.564	6849.02	4637.00	-4618.19	588.66	0.00	
11204.00†	89.881	180.564	6849.22	4736.89	-4718.19	587.67	0.00	
11304.00†	89.881	180.564	6849.43	4836.77	-4818.18	586.69	0.00	
11404.00†	89.881	180.564	6849.64	4936.66	-4918.18	585.71	0.00	
11504.00†	89.881	180.564	6849.85	5036.55	-5018.17	584.72	0.00	
11604.00†	89.881	180.564	6850.05	5136.44	-5118.17	583.74	0.00	
11704.00†	89.881	180.564	6850.26	5236.33	-5218.16	582.76	0.00	
11804.00†	89.881	180.564	6850.47	5336.21	-5318.16	581.77	0.00	
11904.00†	89.881	180.564	6850.68	5436.10	-5418.15	580.79	0.00	
12004.00†	89.881	180.564	6850.88	5535.99	-5518.15	579.81	0.00	
12104.00†	89.881	180.564	6851.09	5635.88	-5618.14	578.82	0.00	
12204.00†	89.881	180.564	6851.30	5735.77	-5718.14	577.84	0.00	
12304.00†	89.881	180.564	6851.51	5835.65	-5818.13	576.86	0.00	
12404.00†	89.881	180.564	6851.71	5935.54	-5918.13	575.87	0.00	
12504.00†	89.881	180.564	6851.92	6035.43	-6018.12	574.89	0.00	
12604.00†	89.881	180.564	6852.13	6135.32	-6118.12	573.90	0.00	
12704.00†	89.881	180.564	6852.34	6235.21	-6218.11	572.92	0.00	
12804.00†	89.881	180.564	6852.54	6335.09	-6318.11	571.94	0.00	
12904.00†	89.881	180.564	6852.75	6434.98	-6418.10	570.95	0.00	
13004.00†	89.881	180.564	6852.96	6534.87	-6518.10	569.97	0.00	
13104.00†	89.881	180.564	6853.17	6634.76	-6618.09	568.99	0.00	
13204.00†	89.881	180.564	6853.37	6734.65	-6718.09	568.00	0.00	
13304.00†	89.881	180.564	6853.58	6834.53	-6818.08	567.02	0.00	
13404.00†	89.881	180.564	6853.79	6934.42	-6918.08	566.04	0.00	
13504.00†	89.881	180.564	6854.00	7034.31	-7018.07	565.05	0.00	
13604.00†	89.881	180.564	6854.20	7134.20	-7118.07	564.07	0.00	
13704.00†	89.881	180.564	6854.41	7234.09	-7218.06	563.09	0.00	
13804.00†	89.881	180.564	6854.62	7333.97	-7318.06	562.10	0.00	
13904.00†	89.881	180.564	6854.83	7433.86	-7418.05	561.12	0.00	
14004.00†	89.881	180.564	6855.03	7533.75	-7518.05	560.13	0.00	



Planned Wellpath Report

CHALK 37N-2A-XR (REV-B.0) PWP

Page 7 of 11



REFERENCE WELLPATH IDENTIFICATION			
Operator	SRC ENERGY	Slot	SLOT#32 CHALK 37N-2A-XR (2330'FNL & 2151'FEL, SEC.26)
Area	COLORADO	Well	CHALK 37N-2A-XR
Field	WELD COUNTY (NAD83,TRUE NORTH)	Wellbore	CHALK 37N-2A-XR PWB
Facility	SEC.26-T06N-R66W		

WELLPATH DATA (211 stations) † = interpolated/extrapolated station								
MD [ft]	Inclination [°]	Azimuth [°]	TVD [ft]	Vert Sect [ft]	North [ft]	East [ft]	DLS [°/100ft]	Comments
14104.00†	89.881	180.564	6855.24	7633.64	-7618.04	559.15	0.00	
14204.00†	89.881	180.564	6855.45	7733.53	-7718.04	558.17	0.00	
14304.00†	89.881	180.564	6855.66	7833.41	-7818.03	557.18	0.00	
14404.00†	89.881	180.564	6855.86	7933.30	-7918.03	556.20	0.00	
14504.00†	89.881	180.564	6856.07	8033.19	-8018.02	555.22	0.00	
14604.00†	89.881	180.564	6856.28	8133.08	-8118.02	554.23	0.00	
14704.00†	89.881	180.564	6856.49	8232.97	-8218.01	553.25	0.00	
14804.00†	89.881	180.564	6856.69	8332.85	-8318.01	552.27	0.00	
14904.00†	89.881	180.564	6856.90	8432.74	-8418.00	551.28	0.00	
15004.00†	89.881	180.564	6857.11	8532.63	-8518.00	550.30	0.00	
15104.00†	89.881	180.564	6857.31	8632.52	-8617.99	549.31	0.00	
15204.00†	89.881	180.564	6857.52	8732.40	-8717.99	548.33	0.00	
15304.00†	89.881	180.564	6857.73	8832.29	-8817.98	547.35	0.00	
15404.00†	89.881	180.564	6857.94	8932.18	-8917.98	546.36	0.00	
15504.00†	89.881	180.564	6858.14	9032.07	-9017.97	545.38	0.00	
15604.00†	89.881	180.564	6858.35	9131.96	-9117.96	544.40	0.00	
15704.00†	89.881	180.564	6858.56	9231.84	-9217.96	543.41	0.00	
15804.00†	89.881	180.564	6858.77	9331.73	-9317.95	542.43	0.00	
15904.00†	89.881	180.564	6858.97	9431.62	-9417.95	541.45	0.00	
16004.00†	89.881	180.564	6859.18	9531.51	-9517.94	540.46	0.00	
16104.00†	89.881	180.564	6859.39	9631.40	-9617.94	539.48	0.00	
16204.00†	89.881	180.564	6859.60	9731.28	-9717.93	538.50	0.00	
16304.00†	89.881	180.564	6859.80	9831.17	-9817.93	537.51	0.00	
16404.00†	89.881	180.564	6860.01	9931.06	-9917.92	536.53	0.00	
16504.00†	89.881	180.564	6860.22	10030.95	-10017.92	535.54	0.00	
16604.00†	89.881	180.564	6860.43	10130.84	-10117.91	534.56	0.00	
16704.00†	89.881	180.564	6860.63	10230.72	-10217.91	533.58	0.00	
16804.00†	89.881	180.564	6860.84	10330.61	-10317.90	532.59	0.00	
16904.00†	89.881	180.564	6861.05	10430.50	-10417.90	531.61	0.00	
17004.00†	89.881	180.564	6861.26	10530.39	-10517.89	530.63	0.00	



Planned Wellpath Report

CHALK 37N-2A-XR (REV-B.0) PWP

Page 8 of 11



REFERENCE WELLPATH IDENTIFICATION			
Operator	SRC ENERGY	Slot	SLOT#32 CHALK 37N-2A-XR (2330'FNL & 2151'FEL, SEC.26)
Area	COLORADO	Well	CHALK 37N-2A-XR
Field	WELD COUNTY (NAD83,TRUE NORTH)	Wellbore	CHALK 37N-2A-XR PWB
Facility	SEC.26-T06N-R66W		

WELLPATH DATA (211 stations) † = interpolated/extrapolated station								
MD [ft]	Inclination [°]	Azimuth [°]	TVD [ft]	Vert Sect [ft]	North [ft]	East [ft]	DLS [°/100ft]	Comments
17104.00†	89.881	180.564	6861.46	10630.28	-10617.89	529.64	0.00	
17204.00†	89.881	180.564	6861.67	10730.16	-10717.88	528.66	0.00	
17304.00†	89.881	180.564	6861.88	10830.05	-10817.88	527.68	0.00	
17404.00†	89.881	180.564	6862.09	10929.94	-10917.87	526.69	0.00	
17504.00†	89.881	180.564	6862.29	11029.83	-11017.87	525.71	0.00	
17604.00†	89.881	180.564	6862.50	11129.72	-11117.86	524.73	0.00	
17704.00†	89.881	180.564	6862.71	11229.60	-11217.86	523.74	0.00	
17804.00†	89.881	180.564	6862.92	11329.49	-11317.85	522.76	0.00	
17904.00†	89.881	180.564	6863.12	11429.38	-11417.85	521.77	0.00	
18004.00†	89.881	180.564	6863.33	11529.27	-11517.84	520.79	0.00	
18104.00†	89.881	180.564	6863.54	11629.16	-11617.84	519.81	0.00	
18204.00†	89.881	180.564	6863.75	11729.04	-11717.83	518.82	0.00	
18304.00†	89.881	180.564	6863.95	11828.93	-11817.83	517.84	0.00	
18404.00†	89.881	180.564	6864.16	11928.82	-11917.82	516.86	0.00	
18504.00†	89.881	180.564	6864.37	12028.71	-12017.82	515.87	0.00	
18604.00†	89.881	180.564	6864.57	12128.60	-12117.81	514.89	0.00	
18704.00†	89.881	180.564	6864.78	12228.48	-12217.81	513.91	0.00	
18804.00†	89.881	180.564	6864.99	12328.37	-12317.80	512.92	0.00	
18904.00†	89.881	180.564	6865.20	12428.26	-12417.80	511.94	0.00	
19004.00†	89.881	180.564	6865.40	12528.15	-12517.79	510.96	0.00	
19104.00†	89.881	180.564	6865.61	12628.04	-12617.79	509.97	0.00	
19204.00†	89.881	180.564	6865.82	12727.92	-12717.78	508.99	0.00	
19304.00†	89.881	180.564	6866.03	12827.81	-12817.78	508.00	0.00	
19404.00†	89.881	180.564	6866.23	12927.70	-12917.77	507.02	0.00	
19504.00†	89.881	180.564	6866.44	13027.59	-13017.77	506.04	0.00	
19604.00†	89.881	180.564	6866.65	13127.48	-13117.76	505.05	0.00	
19704.00†	89.881	180.564	6866.86	13227.36	-13217.76	504.07	0.00	
19773.13	89.881	180.564	6867.00 ²	13296.41	-13286.88	503.39	0.00	End of Tangent
19796.20	90.015	181.005	6867.02	13319.45	-13309.95	503.07	2.00	End of 3D Arc
19804.00†	90.015	181.005	6867.02	13327.24	-13317.75	502.94	0.00	



Planned Wellpath Report

CHALK 37N-2A-XR (REV-B.0) PWP

Page 9 of 11



REFERENCE WELLPATH IDENTIFICATION			
Operator	SRC ENERGY	Slot	SLOT#32 CHALK 37N-2A-XR (2330'FNL & 2151'FEL, SEC.26)
Area	COLORADO	Well	CHALK 37N-2A-XR
Field	WELD COUNTY (NAD83,TRUE NORTH)	Wellbore	CHALK 37N-2A-XR PWB
Facility	SEC.26-T06N-R66W		

WELLPATH DATA (211 stations)								
MD [ft]	Inclination [°]	Azimuth [°]	TVD [ft]	Vert Sect [ft]	North [ft]	East [ft]	DLS [°/100ft]	Comments
19873.33	90.015	181.005	6867.00 ³	13396.47	-13387.07	501.72	0.00	End of Tangent

HOLE & CASING SECTIONS - Ref Wellbore: CHALK 37N-2A-XR PWB Ref Wellpath: CHALK 37N-2A-XR (REV-B.0) PWP									
String/Diameter	Start MD [ft]	End MD [ft]	Interval [ft]	Start TVD [ft]	End TVD [ft]	Start N/S [ft]	Start E/W [ft]	End N/S [ft]	End E/W [ft]
13.5in Open Hole	4.00	1750.00	1746.00	4.00	1742.07	0.00	0.00	-27.89	143.08
9.625in Casing Surface	4.00	1750.00	1746.00	4.00	1742.07	0.00	0.00	-27.89	143.08
8.5in Open Hole	1750.00	19873.33	18123.33	1742.07	6867.00	-27.89	143.08	-13387.07	501.72



Planned Wellpath Report

CHALK 37N-2A-XR (REV-B.0) PWP

Page 10 of 11



REFERENCE WELLPATH IDENTIFICATION			
Operator	SRC ENERGY	Slot	SLOT#32 CHALK 37N-2A-XR (2330'FNL & 2151'FEL, SEC.26)
Area	COLORADO	Well	CHALK 37N-2A-XR
Field	WELD COUNTY (NAD83,TRUE NORTH)	Wellbore	CHALK 37N-2A-XR PWB
Facility	SEC.26-T06N-R66W		

TARGETS									
Name	MD [ft]	TVD [ft]	North [ft]	East [ft]	Grid East [US ft]	Grid North [US ft]	Latitude	Longitude	Shape
EAST HALF OF SEC.02-T05N-R66W		-23.00	617.93	552.90	3211308.44	1412009.18	40°27'42.779"N	104°44'26.117"W	polygon
EAST HALF OF SEC.26-T06N-R66W		-23.00	617.93	552.90	3211308.44	1412009.18	40°27'42.779"N	104°44'26.117"W	polygon
EAST HALF OF SEC.35-T06N-R66W		-23.00	617.93	552.90	3211308.44	1412009.18	40°27'42.779"N	104°44'26.117"W	polygon
SEC.25-T06N-R66W		-23.00	617.93	552.90	3211308.44	1412009.18	40°27'42.779"N	104°44'26.117"W	polygon
SEC.30-T06N-R65W		-23.00	617.93	552.90	3211308.44	1412009.18	40°27'42.779"N	104°44'26.117"W	polygon
SOUTH HALF OF SEC.19-T06N-R65W		-23.00	617.93	552.90	3211308.44	1412009.18	40°27'42.779"N	104°44'26.117"W	polygon
SOUTH HALF OF SEC.24-T06N-R66W		-23.00	617.93	552.90	3211308.44	1412009.18	40°27'42.779"N	104°44'26.117"W	polygon
1) CHALK 37N-2A-XR TOP OF PROD ON PLAT (2166'FSL & 1457'FEL, SEC.26)	7243.85	6841.00	-761.75	703.22	3211470.53	1410630.89	40°27'29.146"N	104°44'24.173"W	circle
CHALK 37N-2A-XR BHL ON PLAT (460'FSL & 1555'FEL, SEC.35)		6867.00	-13286.88	503.39	3211377.70	1398104.99	40°25'25.378"N	104°44'26.761"W	circle
3) CHALK 37N-2A-XR BHL ON PLAT REV-2 (361'FSL & 1558'FEL, SEC.35)	19873.33	6867.00	-13387.07	501.72	3211376.88	1398004.80	40°25'24.388"N	104°44'26.783"W	circle
2) CHALK 37N-2A-XR BPZ ON PLAT (460'FSL & 1558'FEL, SEC.35)	19773.13	6867.00	-13286.88	503.39	3211377.70	1398104.99	40°25'25.378"N	104°44'26.761"W	circle



Planned Wellpath Report

CHALK 37N-2A-XR (REV-B.0) PWP

Page 11 of 11



REFERENCE WELLPATH IDENTIFICATION			
Operator	SRC ENERGY	Slot	SLOT#32 CHALK 37N-2A-XR (2330'FNL & 2151'FEL, SEC.26)
Area	COLORADO	Well	CHALK 37N-2A-XR
Field	WELD COUNTY (NAD83,TRUE NORTH)	Wellbore	CHALK 37N-2A-XR PWB
Facility	SEC.26-T06N-R66W		

SURVEY PROGRAM - Ref Wellbore: CHALK 37N-2A-XR PWB Ref Wellpath: CHALK 37N-2A-XR (REV-B.0) PWP				
Start MD [ft]	End MD [ft]	Positional Uncertainty Model	Log Name/Comment	Wellbore
4.00	1750.00	BHI NaviTrak (Rotating+Axial Corr)		CHALK 37N-2A-XR PWB
1750.00	19873.33	BHI AutoTrak Curve (MagCAD+IFR1, Short spacing)		CHALK 37N-2A-XR PWB