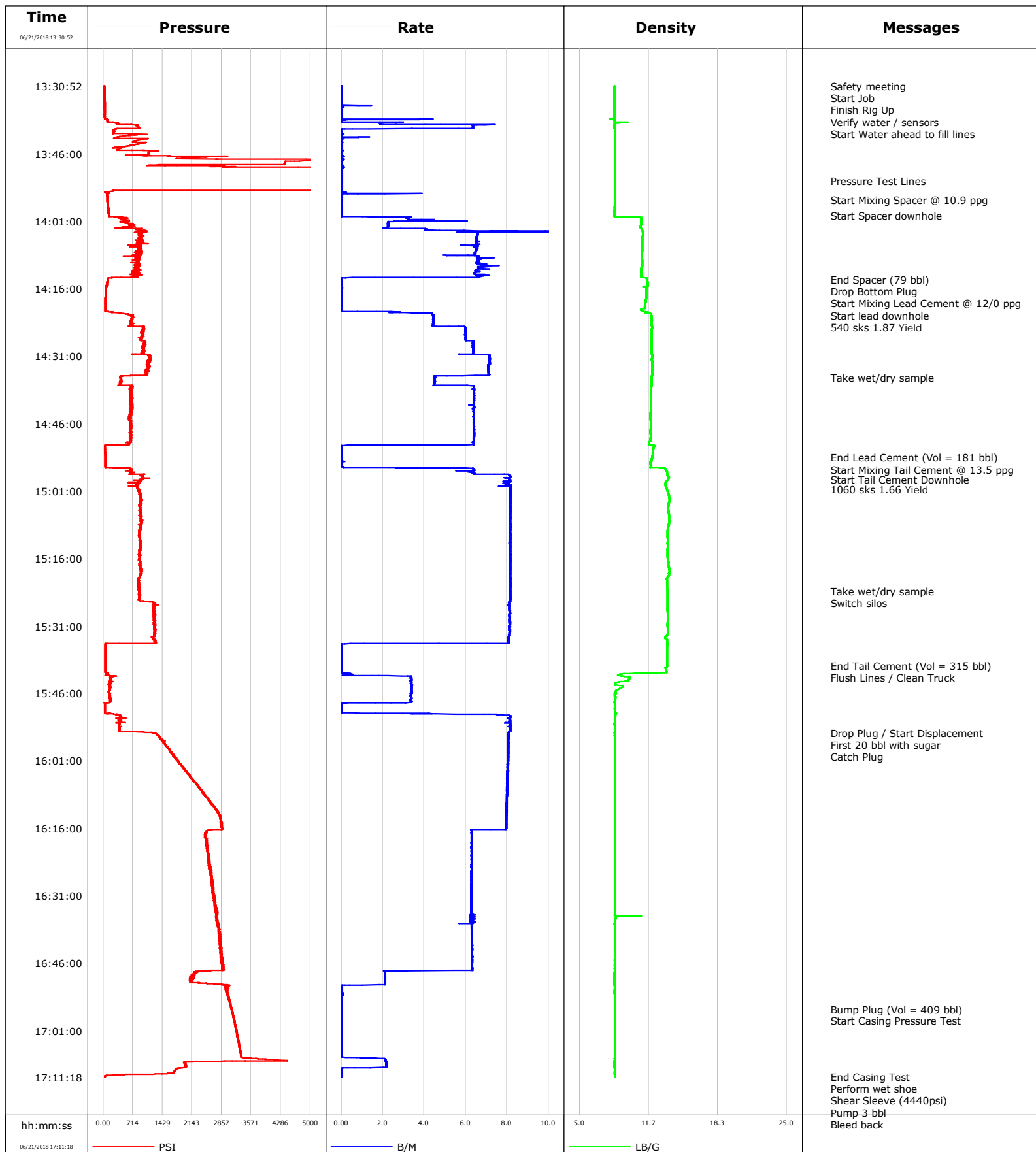


**Well** Quarter Circle 24-10HZ  
**Field** Wattenberg  
**Engineer** Cameron McNutt  
**Country** United States

**Client** Anadarko  
**SIR No.** DZOZ-00178  
**Job Type** 5.5" Production  
**Job Date** 06-21-2018



# Cementing Service Report

				Customer Anadarko			Job Number DZOZ-00178										
Well Quarter Circle 24-10HZ			Location (legal)			Schlumberger Location Cheyenne			Job Start Jun/21/2018								
Field Wattenberg		Formation Name/Type			Deviation 90 deg		Bit Size 7.9 in		Well MD 17619.0 ft		Well TVD 7361.0 ft						
County		State/Province CO			BHP psi		BHST 229 degF		BHCT 229 degF		Pore Press. Gradient lb/gal						
Well Master 0631752612		API/UWI															
Rig Name P461		Drilled For Oil & Gas		Service Via Land		Casing/ Liner											
						Depth, ft		Size, in		Weight, lb/ft		Grade		Thread			
Offshore Zone		Well Class		Well Type		1880.0		9.6		36.0		J55					
						17619.0		5.5		17.0		P110					
Drilling Fluid Type OBM		Max. Density 9.50 lb/gal		Plastic Viscosity cP		Tubing/Drill Pipe											
						T/D		Depth, ft		Size, in		Weight, lb/ft		Grade		Thread	
Service Line Cementing		Job Type 5.5" Production															
Max. Allowed Tub. Press psi		Max. Allowed Ann. Press psi		WH Connection Double Cement head		Perforations/Open Hole											
						Top, ft		Bottom, ft		shot/ft		No. of Shots		Total Interval			
Service Instructions Provide crew, equipment, material to cement 5.5" Production Casing						ft		ft						ft			
						ft		ft						Diameter			
						ft		ft						in			
		Treat Down Casing				Displacement 409.0 bbl				Packer Type				Packer Depth ft			
		Tubing Vol. bbl				Casing Vol. 410.0 bbl				Annular Vol. bbl				Openhole Vol. bbl			
Casing/Tubing Secured <input checked="" type="checkbox"/>		1 Hole Vol. Circulated prior to Cement <input checked="" type="checkbox"/>				Casing Tools				Squeeze Job							
Lift Pressure psi						Shoe Type Float				Squeeze Type							
Pipe Rotated <input type="checkbox"/>		Pipe Reciprocated <input type="checkbox"/>				Shoe Depth 17619.0 ft				Tool Type							
No. Centralizers		Top Plugs 1		Bottom Plugs 1		Stage Tool Type				Tool Depth ft							
Cement Head Type Double						Stage Tool Depth ft				Tail Pipe Size in							
Job Scheduled For Jun/21/2018 10:00		Arrived on Location Jun/21/2018 10:00		Leave Location Jun/21/2018 18:00		Collar Type Float				Tail Pipe Depth ft							
						Collar Depth 17599.8 ft				Sqz. Total Vol. bbl							
Date	Time 24-hr clock	Treating Pressure PSI	Flow Rate B/M	Density LB/G	Volume BBL	Message											
06/21/2018	13:30:52	35	0.0	8.40	0.0	Started Acquisition											
06/21/2018	13:30:54	35	0.0	8.40	0.0	Safety meeting											
06/21/2018	13:30:57	35	0.0	8.40	0.0	Start Job											
06/21/2018	13:31:00	35	0.0	8.40	0.0	Finish Rig Up											
06/21/2018	13:31:09	35	0.0	8.40	0.0	Verify water / sensors											
06/21/2018	13:31:14	35	0.0	8.40	0.0	Start Water ahead to fill lines											
06/21/2018	13:52:04	6678	0.0	8.41	6.5	Pressure Test Lines											
06/21/2018	13:56:13	103	0.0	8.40	6.8	Start Mixing Spacer @ 10.9 ppg											
06/21/2018	13:59:36	134	0.0	8.40	0.1	Start Spacer downhole											
06/21/2018	14:13:58	110	0.0	11.52	0.0	End Spacer (79 bbl)											
06/21/2018	14:14:03	110	0.0	11.53	0.0	Drop Bottom Plug											
06/21/2018	14:14:09	110	0.0	11.54	0.0	Start Mixing Lead Cement @ 12/0 ppg											
06/21/2018	14:21:00	57	0.0	11.14	0.0	Start lead downhole											
06/21/2018	14:33:02	1113	7.1	11.99	69.7	Take wet/dry sample											
06/21/2018	14:50:53	48	0.1	12.24	0.0	End Lead Cement (Vol = 181 bbl)											
06/21/2018	14:51:01	47	0.0	12.19	0.0	Start Mixing Tail Cement @ 13.5 ppg											
06/21/2018	14:55:43	54	0.1	11.82	0.1	Start Tail Cement Downhole											
06/21/2018	15:18:24	899	8.2	13.66	181.2	Take wet/dry sample											
06/21/2018	15:19:22	913	8.1	13.59	189.1	Switch silos											
06/21/2018	15:34:58	56	0.1	13.53	315.2	End Tail Cement (Vol = 315 bbl)											
06/21/2018	15:35:14	55	0.0	13.48	0.0	Flush Lines / Clean Truck											

Well Quarter Circle 24-10HZ			Field Wattenberg		Job Start Jun/21/2018	Customer Anadarko		Job Number DZOZ-00178
Date	Time 24-hr clock	Treating Pressure PSI	Flow Rate B/M	Density LB/G	Volume BBL	Message		
06/21/2018	15:50:59	423	8.2	8.44	3.8	First 20 bbl with sugar		
06/21/2018	15:54:33	863	8.1	8.40	32.8	Catch Plug		
06/21/2018	16:51:22	2944	0.0	8.40	410.8	Bump Plug (Vol = 409 bbl)		
06/21/2018	16:51:23	2976	0.0	8.40	410.8	Start Casing Pressure Test		
06/21/2018	17:06:24	3322	0.0	8.40	411.0	End Casing Test		
06/21/2018	17:06:41	3327	0.0	8.40	411.0	Perform wet shoe		
06/21/2018	17:07:41	4440	2.1	8.40	412.4	Shear Sleeve (4440psi)		
06/21/2018	17:08:28	1970	2.2	8.40	414.1	Pump 3 bbl		
06/21/2018	17:10:40	665	0.0	8.40	415.8	Bleed back		
06/21/2018	17:11:10	41	0.0	8.40	415.8	Check Floats, 2.5 bbl back		

### Post Job Summary

Average Pump Rates, bbl/min					Volume of Fluid Injected, bbl			
Slurry 5.0	N2	Mud	Maximum Rate 20.0	Total Slurry 496.0	Mud 0.0	Spacer 79.0	N2	
Treating Pressure Summary, psi					Breakdown Fluid			
Maximum 7201	Final 45	Average 1461	Bump Plug to 2900	Breakdown	Type	Volume bbl	Density lb/gal	
Avg. N2 Percent %		Designed Slurry Volume 487.0 bbl		Displacement 409.0 bbl	Mix Water Temp 75 degF	Cement Circulated to Surface? <input type="checkbox"/>	Volume bbl	
						Washed Thru Perfs <input type="checkbox"/>	To ft	
Customer or Authorized Representative			Schlumberger Supervisor Cameron McNutt			Circulation Lost <input type="checkbox"/>	Job Completed <input checked="" type="checkbox"/>	
						-	-	