

Inspection Photos

08/21/2018

Operator: GRAND MESA OPERATING CO - 35080

Location ID: 455191

Inspection Doc. Number: 682503769

Lincoln County, CO

Aaron Trujillo
NE Reclamation Specialist
COGCC

Inspection Photos
Operator: GRAND MESA OPERATING CO - 35080
Location ID: 455191



Photo 1: Photo taken from the pumpunit. Well is currently active, recent inspection shows well status as “Producing”.



Photo 2: Photo taken from northwest corner of the drill pit, facing southeast. Photo shows drill pit remains open.



Photo 3: Photo taken from the west end of the location, facing east. Photo shows over view of the location. Initial interim reclamation work appears to have begun.



Photo 4: Photo taken from the northwest corner of the location, facing south. See comments under photo 2



Photo 5: Photo taken from the northwest corner of the location, facing east. Photo shows stormwater and erosion control BMPs. Berm appears to have been constructed with topsoil. Berm does not appear to have been compacted, stabilized or constructed in accordance with good engineering practices. Photo also shows surface roughening along perimeter.



Photo 6: Photo taken from the north end of the location, facing south. Berm appears to have been constructed with topsoil. Berm does not appear to have been compacted, stabilized or constructed in accordance with good engineering practices.



Photo 7: Continued from photo 6. Photo shows erosion degradation. BMPs appear to be insufficient and not constructed in accordance with good engineering practices.



Photo 8: Photo taken from the north end of the location, facing west. Operator appears to have implemented a sediment trap, or retention pond on the southern end of the location. BMP does not appear to be appropriate in size to mitigate runoff from the 4.26 acre location. Trap/pond missing sufficient inlet and outlet protection and does not appear to be designed in such a manner to allow for sediment-laden free stormwater discharge from the location; BMP does not appear to have been constructed in accordance with good engineering practice.



Photo 9: Continued from photo 8. Photo shows trap/pond does not have sufficient inlet or outlet protection in accordance with good engineering practice.



Photo 10: Photo taken from the northeastern area of the location. Initial interim work appears to be in process.



Photo 11: Photo taken from the northeast corner of the location, facing south. Photo of perimeter controls.



Photo 12: Photo taken from the northeast corner of the location, facing west. Photo of perimeter controls.



Photo 13: Photo taken from the northeast corner of the location, facing south. Photo shows erosion degradation occurring on berms as well as the resulting sediment transport and deposition. Berms do not appear to be stabilized or compacted in accordance with good engineering practices.



Photo 14: Photo taken from the southeast corner of the location, facing west. Photo shows surface roughening. Surface roughening is a temporary that needs to be implemented in conjunction with other stormwater and erosion control BMPs



Photo 15: Photo taken from the southeast corner of the location, facing northwest. Photo shows sub-soil stockpile on locaiton. Erosion degradation evident on stockpile.



Photo 16: Photo taken from the south end of the location, facing north. Photo shows erosion degradation and sediment deposition from the sub-soil stockpile.



Photo 17: Photo taken from the southwest end of the location, facing east.



Photo 18: Photo taken from the southwest end of the location, facing north.

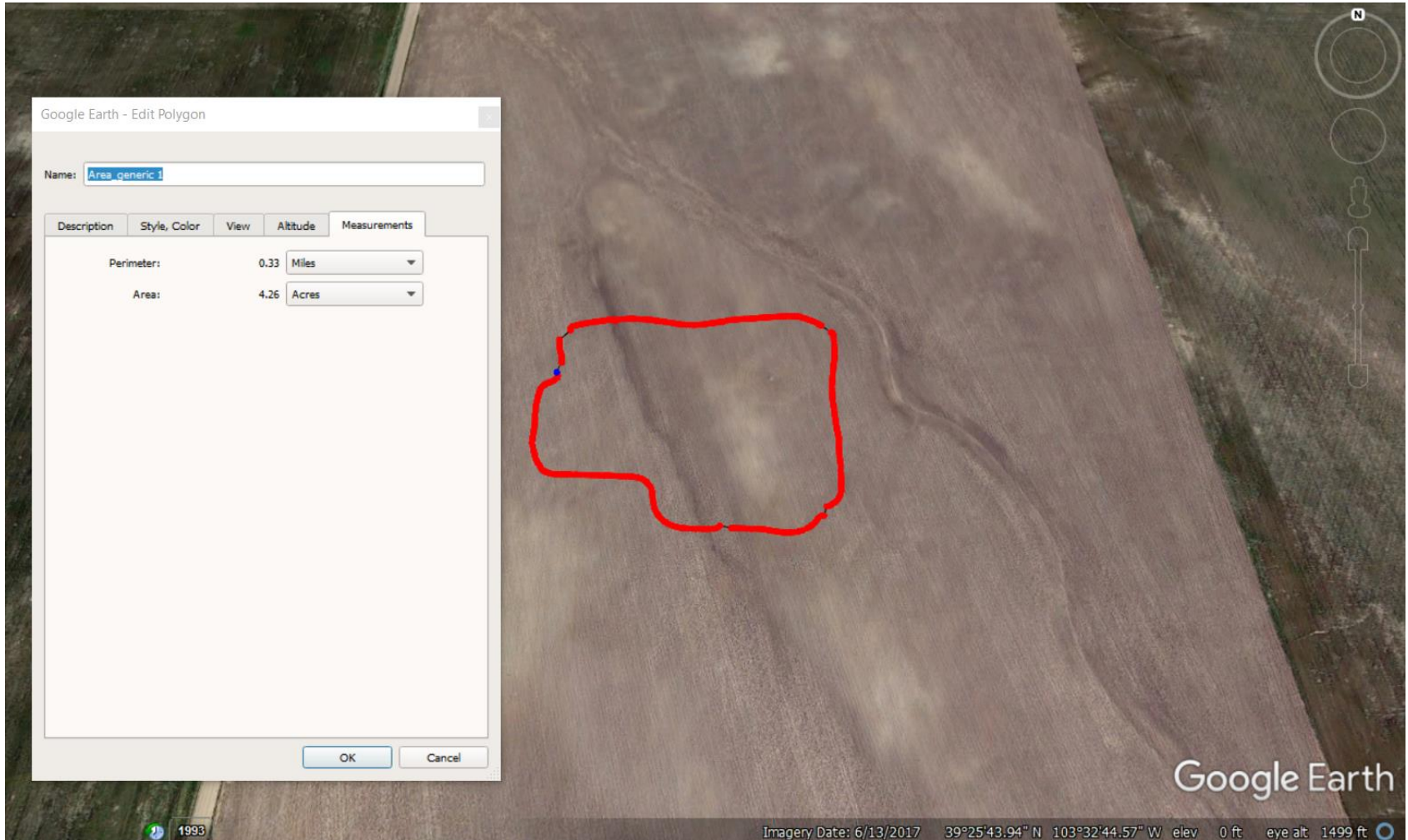


Photo 19: 2017 Google Earth aerial imagery. 2A doc. #401589228 states size of disturbance area during construction will be 2.5 acres in size. GPS measurements were conducted indicating that the disturbance area is 4.26 acres in size.