

# Inspection Photos

07/31/2018

Operator: WINSLOW RESOURCES INC - 97065

Location ID: 390108

Inspection Doc. Number: 682503676

Logan County, CO

Aaron Trujillo  
NE Reclamation Specialist  
COGCC



**Photo 1:** Photo taken from the east end of the location, facing north. Previous inspections documented that areas on the east end of the location and access road have not achieved a uniform desirable perennial vegetative cover, and stormwater has caused erosion degradation. Inspections required operator to perform reclamation and stormwater management. Photo shows no management activities per the corrective action appear to have been conducted; location/access road has not been adequately contoured/graded and re-vegetated, stormwater has continued to cause erosion degradation.



**Photo 2:** See comments under photo 1. 6 foot measuring stick for reference.



Inspection Photos  
Operator: WINSLOW RESOURCES INC - 97065  
Location ID: 390108



**Photo 3:** See comments under photo 1.



**Photo 4:** Photo taken from the east end of the location, facing east. Photo shows gully erosion where the access road meets location. See comments under photo 1.



Inspection Photos  
Operator: WINSLOW RESOURCES INC - 97065  
Location ID: 390108



**Photo 5:** Photo taken from the access road, northeast of the location, facing northeast. Photo shows access road has not been recontoured/reggraded to the adjacent lands and stormwater has continued to degrade and channelize the access road creating a gulley. 6 foot measuring stick for reference.



**Photo 6:** See comments under photo 5. Photo shows gulley is ~2.5 feet deep.



Inspection Photos  
Operator: WINSLOW RESOURCES INC - 97065  
Location ID: 390108



**Photo 7:** See comments under photo 5. 6 foot measuring stick for reference.



**Photo 8:** Photo taken from the access road, east of the location, facing southwest. See comments under photo 5. 6 foot measuring stick for reference.





**Photo 9:** Photo taken from the access road, northeast of the location, facing northeast. See comments under photo 5. 6 foot measuring stick for reference.



**Photo 10:** Photo taken from the access road. Photo shows 6 foot measuring stick. Photo shows stormwater erosion degradation has incised to a depth of almost 6 feet in areas of the access road



Inspection Photos  
Operator: WINSLOW RESOURCES INC - 97065  
Location ID: 390108



**Photo 11:** Photo taken from the access road, northeast of the location, facing northeast. See comments under photo 5

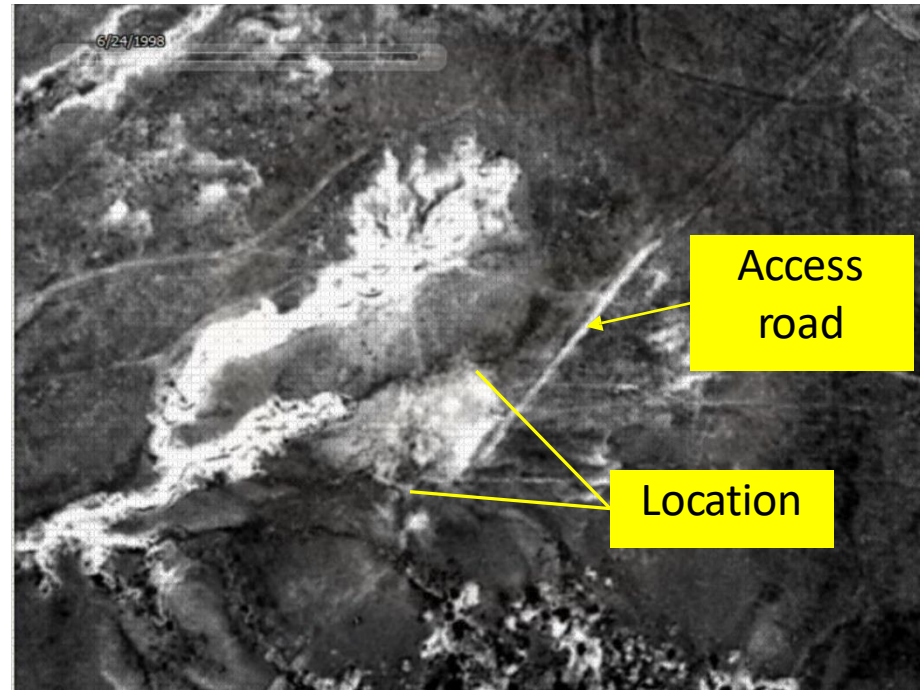


**Photo 12:** Photo taken from the access road, northeast of the location, facing southwest. See comments under photo 5.

Inspection Photos  
Operator: WINSLOW RESOURCES INC - 97065  
Location ID: 390108



**Photo 13:** 1985 Aerial imagery Well was PA in 1987. Photo shows the active location and access road



**Photo 14:** 1998 aerial imagery PA in 1987. Photo shows location and access road remains evident 11 post plugging and abandonment.





**Photo 15:** Current available aerial imager (2015). Photo shows access road and well location.