

Approximate Top of Producing Zone:
60' FNL, 1745' FEL, Sec 19, T3N-R64W.
HAND DRAWN 2/22/2018

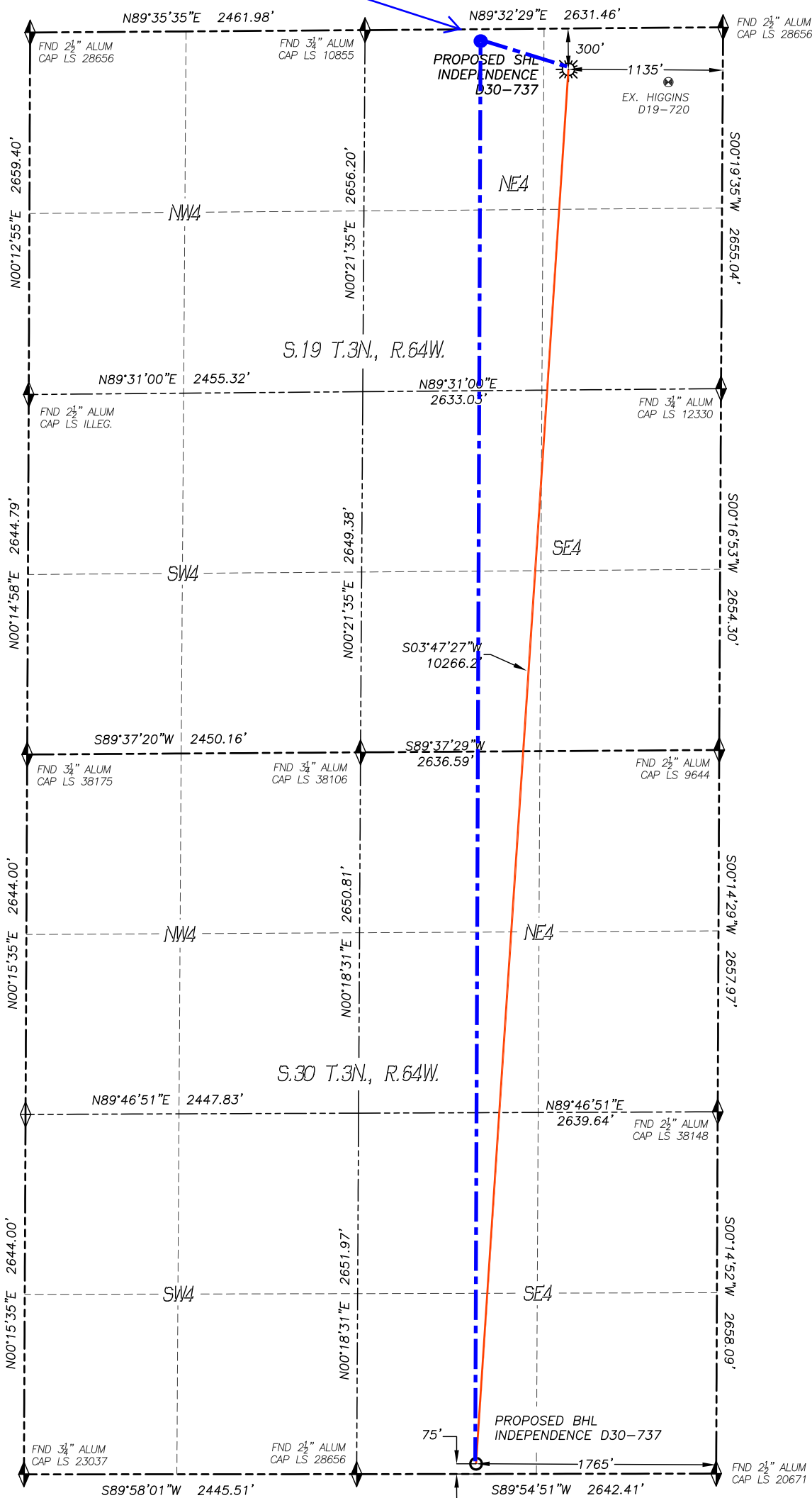
Depiction was not surveyed and was added by NBL

WELL LOCATION CERTIFICATE INDEPENDENCE D30-737

SECTION: 19
TOWNSHIP: 3N
RANGE: 64W

APPROVED

By hilarymckenna at 9:54 am, 2/26/18

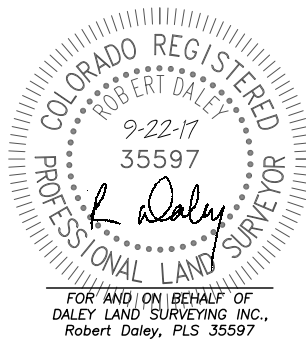


IN ACCORDANCE WITH A REQUEST FROM TYLER BEAVERS OF NOBLE ENERGY INC., DALEY LAND SURVEYING, INC. HAS DETERMINED THE SURFACE LOCATION OF THE INDEPENDENCE D30-737 WELL TO BE 300' FNL, 1135' FEL, AS MEASURED AT NINETY (90) DEGREES FROM THE SECTION LINES OF SECTION 19, TOWNSHIP 3 NORTH, RANGE 64 WEST AND THE BOTTOM HOLE LOCATION TO BE 75' FSL, 1765' FEL, AS MEASURED AT NINETY (90) DEGREES FROM THE SECTION LINES OF SECTION 30, TOWNSHIP 3 NORTH, RANGE 64 WEST, OF THE 6TH PRINCIPAL MERIDIAN, WELD COUNTY, COLORADO.

I HEREBY STATE THAT THIS WELL LOCATION CERTIFICATE WAS PREPARED BY ME OR UNDER MY DIRECT SUPERVISION, THAT THE WORK WAS COMPLETED ON 8/17/2017 FOR AND ON BEHALF OF NOBLE ENERGY, INC., AND THAT THIS MAP DOES NOT REPRESENT A BOUNDARY SURVEY, IT IS NOT A LAND SURVEY PLAT OR AN IMPROVEMENT SURVEY PLAT AND IT IS NOT TO BE RELIED UPON FOR THE ESTABLISHMENT OF FENCE, BUILDING OR OTHER FUTURE IMPROVEMENT LINES.

NOTES:

- BEARINGS FOR THIS MAP ARE ASSUMED AND BASED UPON GPS OBSERVATIONS MADE BETWEEN MONUMENTS LOCATED AT THE NORTHWEST CORNER AND NORTH QUARTER CORNER OF SECTION 19, T.3N., R.64W.
- HORIZONTAL DATUM IS NAD83.
- VERTICAL DATUM IS NAVD88 AND ORIGINATES FROM THE LOCAL C.O.R.S. NETWORK, UTILIZING THE GEOID12A MODEL.
- SEE LOCATION DRAWING FOR VISIBLE IMPROVEMENTS WITHIN 500' OF PROPOSED DISTURBED AREA.
- SURFACE USE: RANGELAND.
- INST. OPERATOR: KYLE DALEY.
- NEAREST WELL: 741'± SE - HIGGINS D19-720



NEAREST CULTURAL ITEMS:

BUILDING: 540'± S
BUILDING UNIT: 2269'± NW
HIGH OCC. BLD. UNIT: 5280'±
DES. OUTSIDE ACTIVITY AREA: 5280'±
PUBLIC ROAD: 288'± N
ABOVE GROUND UTILITY: 1136'± E
RAILROAD: 5280'±
PROPERTY LINE: 300'± N

NAD 83 LATITUDE AND LONGITUDE

SURFACE LOCATION:

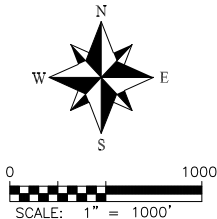
LATITUDE: N40.21721°
LONGITUDE: W104.58850°
ELEV: 4769'
PDOP: 1.0
QTR/QTR: NE4/NE4

BOTTOM HOLE:

LATITUDE: N40.18910°
LONGITUDE: W104.59092°

LEGEND

- FOUND MONUMENT AS DESCRIBED
- PROPOSED WELL
- EXISTING WELL
- BOTTOM HOLE
- ABANDONED WELL
- CALCULATED POSITION



noble energy

DALEY LAND
SURVEYING, INC.
970.302.4159