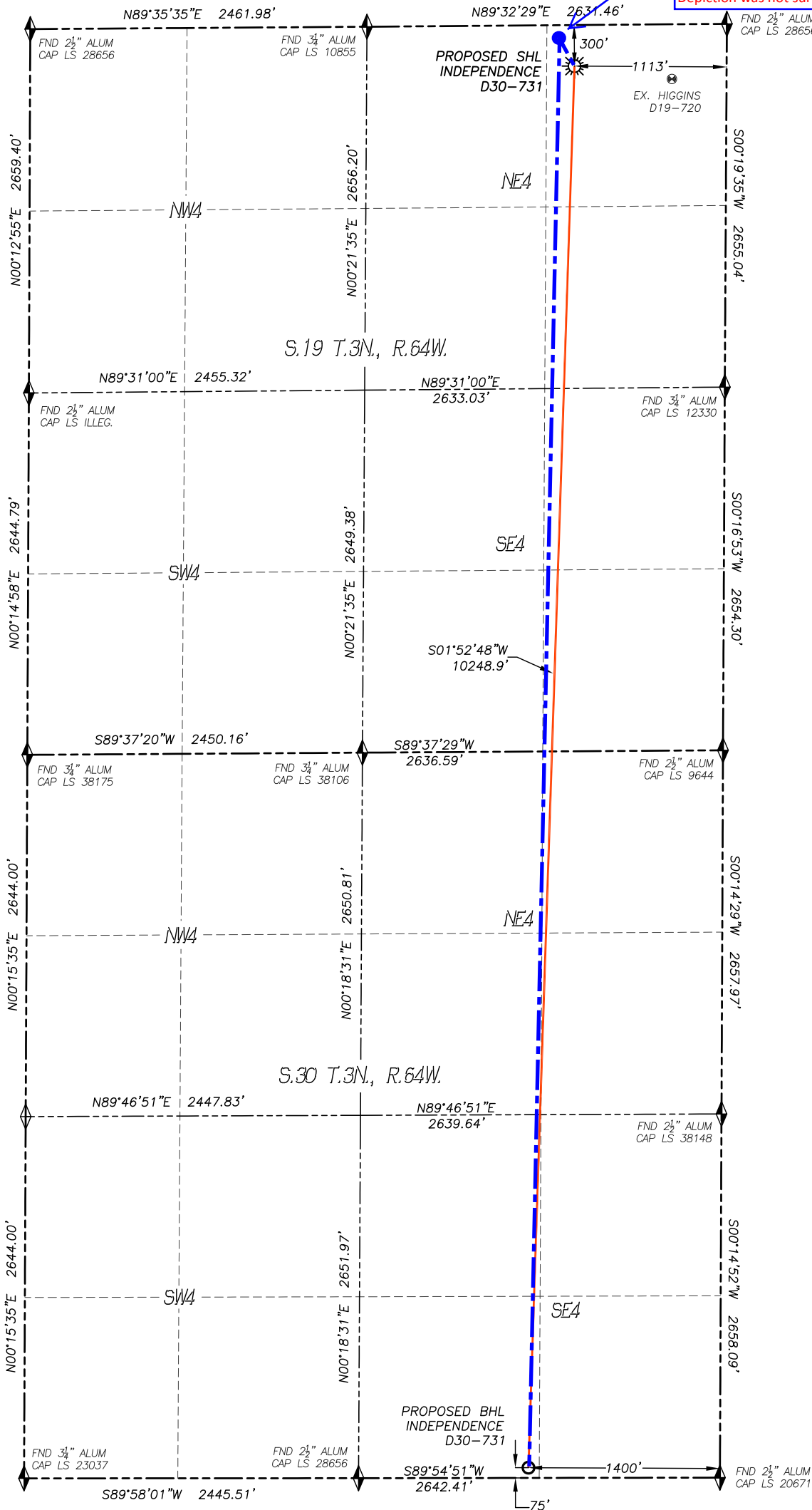


WELL LOCATION CERTIFICATE  
INDEPENDENCE D30-731

SECTION: 19  
TOWNSHIP: 3N  
RANGE: 64W

Approximate Top of Producing Zone:  
60' FNL, 1255' FEL, Sec 19, T3N-R64W.  
**HAND DRAWN 2/22/2018**  
Depiction was not surveyed and was added by NBL



APPROVED

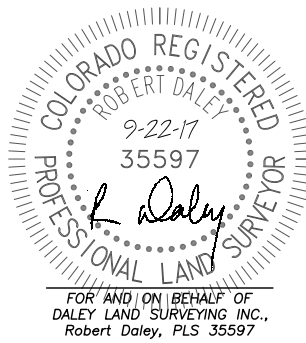
By hilarymckenna at 9:51 am, 2/26/18

IN ACCORDANCE WITH A REQUEST FROM TYLER BEAVERS OF NOBLE ENERGY INC., DALEY LAND SURVEYING, INC. HAS DETERMINED THE SURFACE LOCATION OF THE INDEPENDENCE D30-731 WELL TO BE 300' FNL, 1113' FEL, AS MEASURED AT NINETY (90) DEGREES FROM THE SECTION LINES OF SECTION 19, TOWNSHIP 3 NORTH, RANGE 64 WEST AND THE BOTTOM HOLE LOCATION TO BE 75' FSL, 1400' FEL, AS MEASURED AT NINETY (90) DEGREES FROM THE SECTION LINES OF SECTION 30, TOWNSHIP 3 NORTH, RANGE 64 WEST, OF THE 6TH PRINCIPAL MERIDIAN, WELD COUNTY, COLORADO.

I HEREBY STATE THAT THIS WELL LOCATION CERTIFICATE WAS PREPARED BY ME OR UNDER MY DIRECT SUPERVISION, THAT THE WORK WAS COMPLETED ON 8/17/2017 FOR AND ON BEHALF OF NOBLE ENERGY, INC., AND THAT THIS MAP DOES NOT REPRESENT A BOUNDARY SURVEY, IT IS NOT A LAND SURVEY PLAT OR AN IMPROVEMENT SURVEY PLAT AND IT IS NOT TO BE RELIED UPON FOR THE ESTABLISHMENT OF FENCE, BUILDING OR OTHER FUTURE IMPROVEMENT LINES.

NOTES:

- BEARINGS FOR THIS MAP ARE ASSUMED AND BASED UPON GPS OBSERVATIONS MADE BETWEEN MONUMENTS LOCATED AT THE NORTHWEST CORNER AND NORTH QUARTER CORNER OF SECTION 19, T.3N., R.64W.
- HORIZONTAL DATUM IS NAD83.
- VERTICAL DATUM IS NAVD88 AND ORIGINATES FROM THE LOCAL C.O.R.S. NETWORK, UTILIZING THE GEOID12A MODEL.
- SEE LOCATION DRAWING FOR VISIBLE IMPROVEMENTS WITHIN 500' OF PROPOSED DISTURBED AREA.
- SURFACE USE: RANGELAND.
- INST. OPERATOR: KYLE DALEY.
- NEAREST WELL: 719± SE - HIGGINS D19-720



NEAREST CULTURAL ITEMS:

BUILDING: 543'± SW  
BUILDING UNIT: 2290'± NW  
HIGH OCC. BLD. UNIT: 5280'+  
DES. OUTSIDE ACTIVITY AREA: 5280'+  
PUBLIC ROAD: 288'± N  
ABOVE GROUND UTILITY: 1114'± E  
RAILROAD: 5280'+  
PROPERTY LINE: 300'± N

NAD 83 LATITUDE AND LONGITUDE

SURFACE LOCATION:

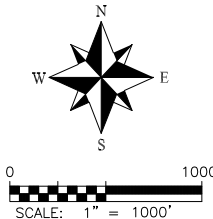
LATITUDE: N40.21721°  
LONGITUDE: W104.58842°  
ELEV: 4767'  
PDOP: 1.0  
QTR/QTR: NE4/NE4

BOTTOM HOLE:

LATITUDE: N40.18910°  
LONGITUDE: W104.58962°

LEGEND

- FOUND MONUMENT AS DESCRIBED
- PROPOSED WELL
- EXISTING WELL
- BOTTOM HOLE
- ABANDONED WELL
- CALCULATED POSITION



noble energy

DALEY LAND  
SURVEYING, INC.  
970.302.4159