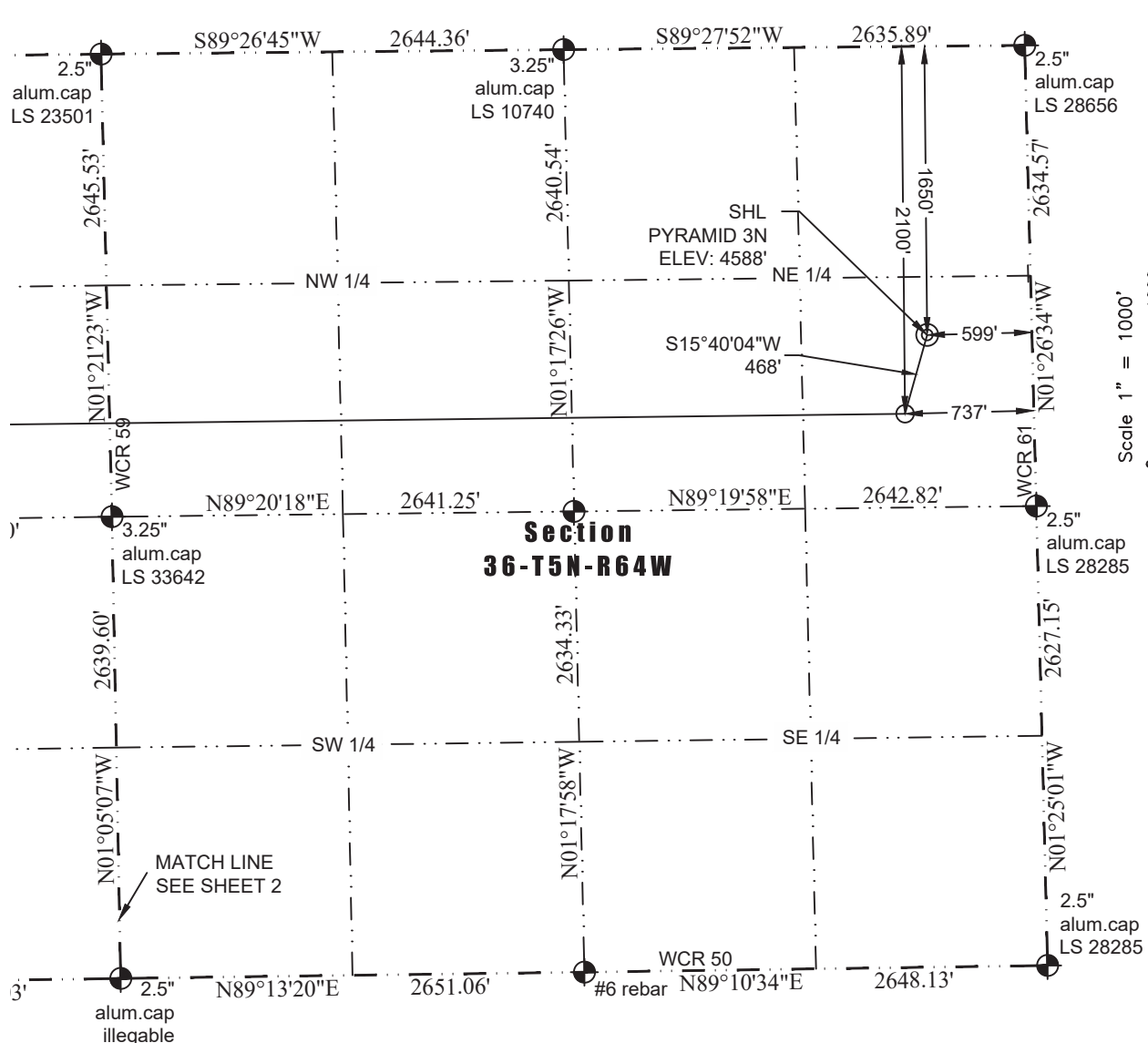


WELL LOCATION CERTIFICATE

THIS MAP DOES NOT REPRESENT A BOUNDARY SURVEY

Washburn Land Surveying
 www.WashburnSurveying.com
 970-232-9645



In accordance with a request from Mac Neumann of PDC Energy, Inc., Washburn Land Surveying, LLC has determined the location of the **PYRAMID 3N** well site to be SHL: 1650' FNL and 599' FEL, (EPL: 2100' FNL and 737' FEL. BHL: 2100' FNL and 50' FWL), as measured at ninety (90) degrees from the section lines of Sections 35 and 36, Township 5 North, Range 64 West of the 6th Principal Meridian, Weld County Colorado.

Proposed Surface Hole Data:

Latitude: N 40.358603°
 Longitude: W 104.490523°
 PDOP: 2.2

Nearest Cultural Items:

Building: 1251' SE
 Building Unit: 1363' SE
 Above Ground Utility: 330' N
 Public Road: 587' E

Proposed Entry Point Data:

Latitude: N 40.357369°
 Longitude: W 104.490996°

Distance to nearest unit boundary: 535'

Property Line: 332' N
 Railroad: +5280'
 High Occupancy Building Unit: +5280
 Designated Outside Activity Area: +5280

Proposed Bottom Hole Data:

Latitude: N 40.357350°
 Longitude: W 104.526139°

LEGEND

- ⊕ - Found Survey Monument
- ⊙ - Surface Hole Location (SHL)
- - Entry Point Location (EPL)
- ✕ - Bottom Hole Location (BHL)

I hereby certify that this Well Location Certificate was prepared by me or under my direct supervision on 2/27/2018 for and on behalf of PDC Energy, Inc. that it is not a Land Survey Plat or an Improvement Survey Plat and that it is not to be relied upon for establishment of fences, buildings, or other future improvement lines.

John Robert McGhee LS#38219
 Well: PYRAMID 3N WLC

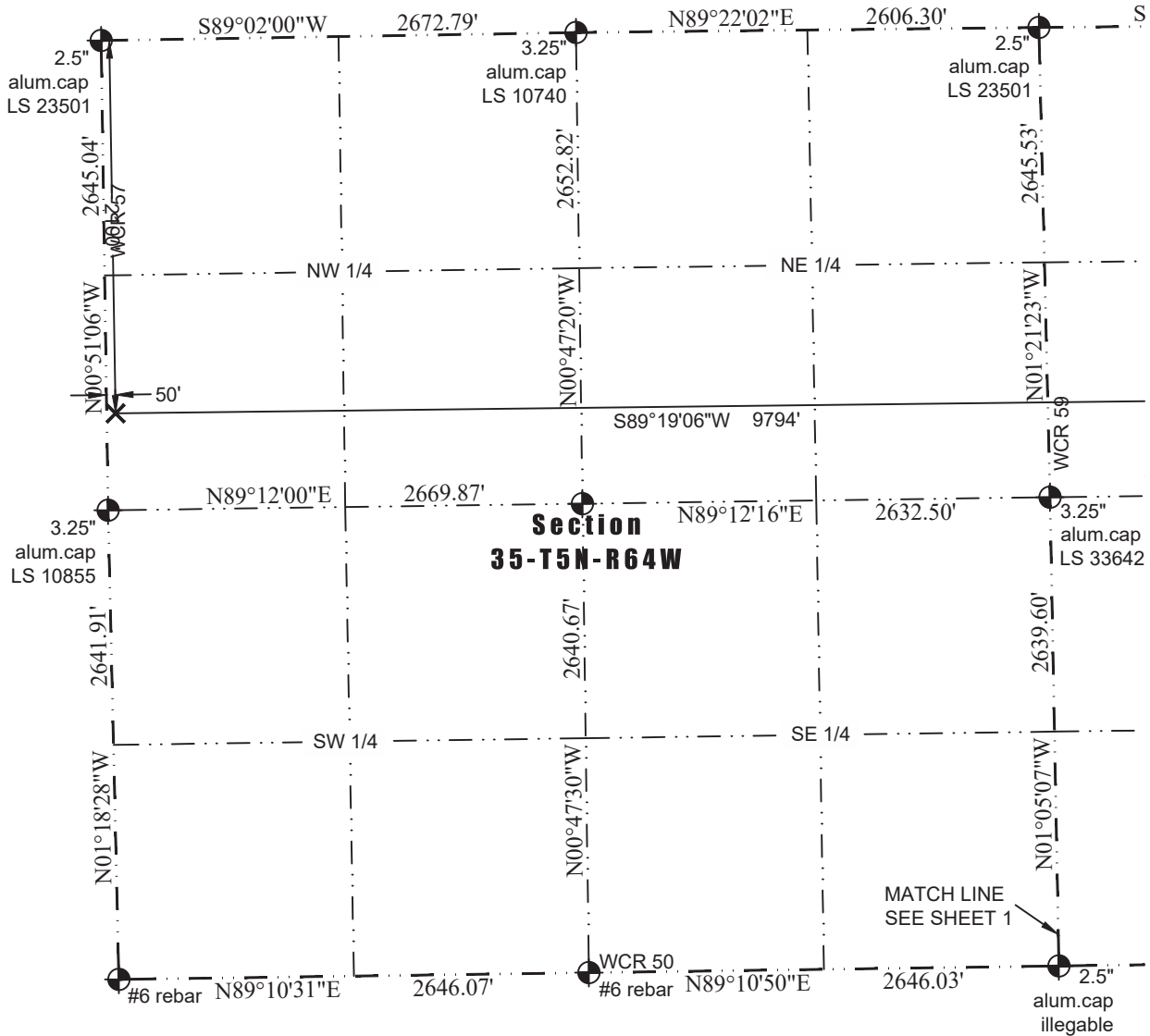
Notes:

- 1) Bearings and distances based on NAD 83 Colorado North State Plane Coordinate.
- 2) Conversion factor to ground (1.0002585081).
- 3) Elevations based on NAVD 88 GPS heights and Geoid 2009 corrections.
- 4) See Location Drawing for visible improvements within 500 feet of Pad Site.
- 5) The surface use is a cultivated field.

NOTICE: According to Colorado law you must commence any legal action based upon any defect in this W.L.C. within three years after you first discover such defect. In no event may any action based upon any defect in this W.L.C. be commenced more than ten years from this said date of the certification shown hereon.

WELL LOCATION CERTIFICATE

THIS MAP DOES NOT REPRESENT A BOUNDARY SURVEY



LEGEND

- ⊕ - Found Survey Monument
- ⊙ - Surface Hole Location (SHL)
- - Entry Point Location (EPL)
- ✕ - Bottom Hole Location (BHL)