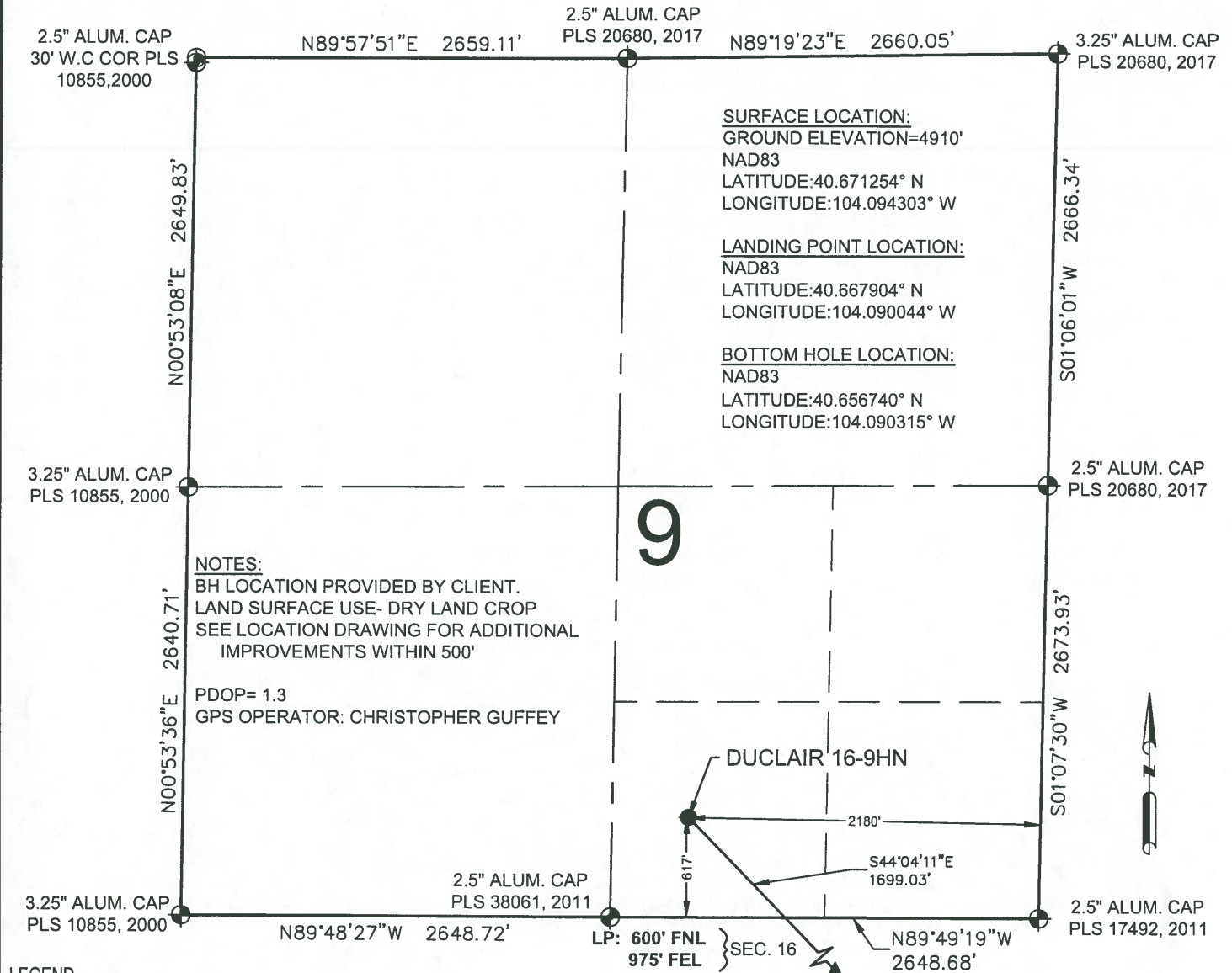


# DUCLAIR 16-9HN WELL LOCATION EXHIBIT



## LEGEND

- ⊕ = EXISTING MONUMENT
- = CALCULATED POSITION
- = PROPOSED WELL
- ◆ = EXISTING WELL
- ⬮ = BOTTOM HOLE
- ▲ = LANDING POINT
- LP = LANDING POINT
- BHL = BOTTOM HOLE LOCATION

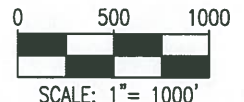
## NOTES:

- THIS FIELD SURVEY CONFORMS TO THE MINIMUM STANDARDS SET BY THE C.O.G.C.C., RULE NO. 215
- ALL DISTANCES AND BEARINGS SHOWN HEREON ARE GROUND VALUES AS GPS MEASURED IN THE FIELD, WITH TIES TO WELLS MEASURED PERPENDICULAR TO LINES SHOWN HEREON. THIS LOW DISTORTION PROJECTION (LDP) IS BASED ON THE NORTH AMERICAN DATUM OF 1983, U.S. SURVEY FOOT WITH A LATITUDE ORIGIN OF 40.655085°N, A CENTRAL MERIDIAN LONGITUDE OF 104.086861°W, AND A SCALE FACTOR ON THE CENTRAL MERIDIAN OF 1.000232 (EXACT). THE LDP BASIS OF BEARINGS IS GEODETIC NORTH.
- FIELD VERIFICATION OF MONUMENTS COMPLETED WITHIN 1 YEAR OF SIGNATURE DATE, UNLESS OTHERWISE NOTED.



## WELL DUCLAIR 16-9HN TO BE LOCATED 2180' FEL & 617' FSL

I, ROBERT J. GUFFEY, A LICENSED PROFESSIONAL LAND SURVEYOR IN THE STATE OF COLORADO, DO HEREBY STATE TO **MALLARD EXPLORATION** THAT THE WELL LOCATION EXHIBIT SHOWN HEREON WAS PREPARED BY ME OR UNDER MY DIRECT SUPERVISION AND THE DRAWING SHOWN HEREON ACCURATELY DEPICTS THE PROPOSED LOCATION OF THE WELL. THIS EXHIBIT MEETS THE REQUIREMENTS OF A GIS LAND POSITION AS DEFINED BY SECTION 38-51-102 (7.5) C.R.S. AND AS SUCH PER SECTION 38-51-109.3 C.R.S. CANNOT BE RELIED UPON TO DETERMINE OWNERSHIP.

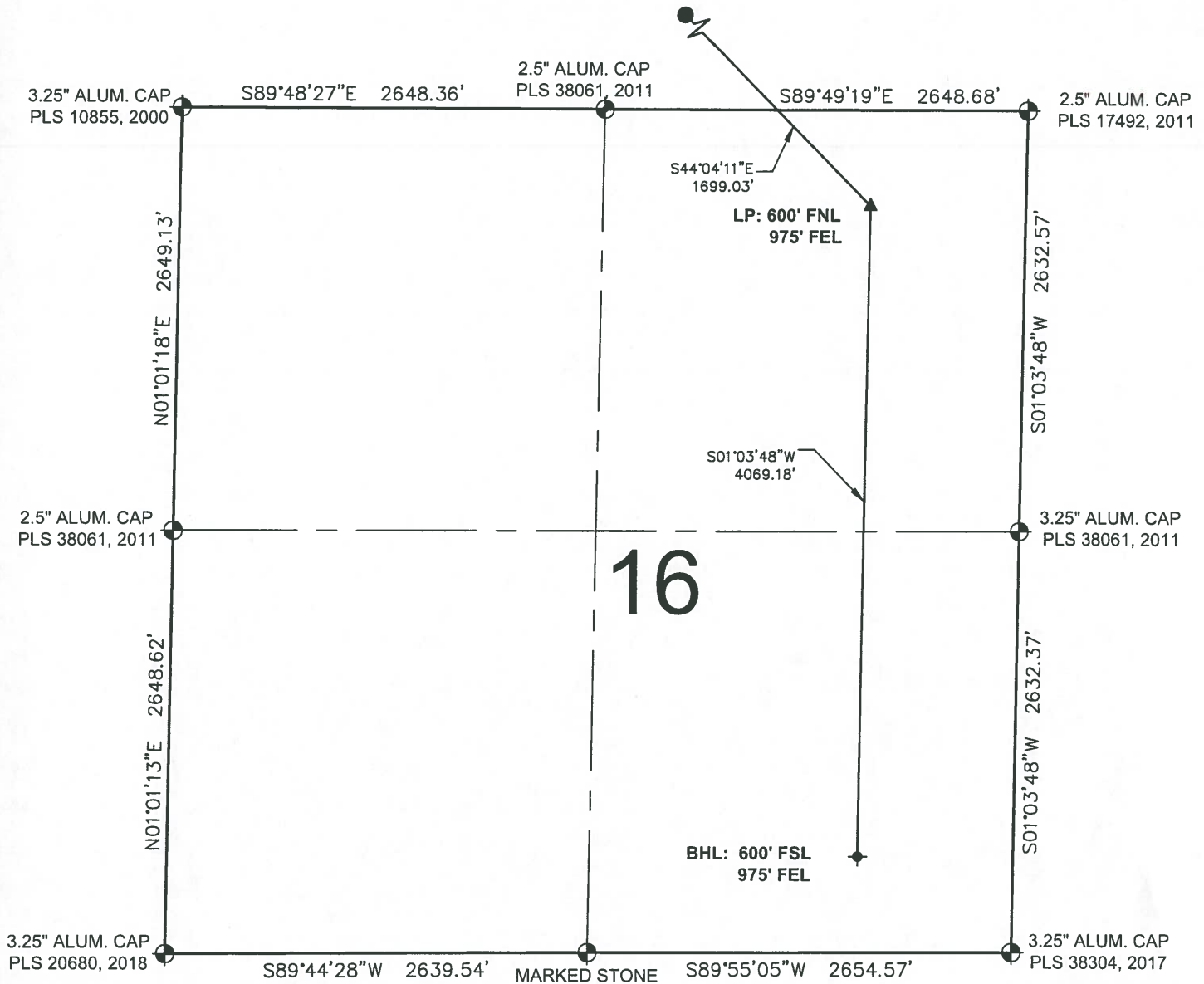
ROBERT J. GUFFEY, PLS 20680  
COLORADO LICENSED PROFESSIONAL LAND SURVEYOR  
FOR AND ON BEHALF OF P.F.S., LLC  
d.b.a. ASCENT GEOMATICS SOLUTIONS



SHEET 1 OF 2

 <p>7535 Hilltop Circle Denver, CO 80221 (303) 928-7128 www.ascentgeomatics.com</p>	FIELD DATE: 09-29-17	WELL NAME: DUCLAIR 16-9HN	PREPARED FOR:  <p><b>MALLARD</b> EXPLORATION</p>
	DRAWING DATE: 06-14-18	SURFACE LOCATION: SW 1/4 SE 1/4 SEC. 9, T8N, R60W, 6TH P.M. WELD COUNTY, COLORADO	
BY: SZ	CHECKED: IJM		

# **DUCLAIR 16-9HN WELL LOCATION EXHIBIT**



## **LEGEND**

- ⊕ = EXISTING MONUMENT      ◆ = BOTTOM HOLE
- = CALCULATED POSITION    ▲ = LANDING POINT
- = PROPOSED WELL        LP = LANDING POINT
- ◆ = EXISTING WELL        BHL = BOTTOM HOLE LOCATION

ROBERT J. GUFFEY, PLS 20680  
 COLORADO LICENSED PROFESSIONAL LAND SURVEYOR  
 FOR AND ON BEHALF OF P.F.S., LLC  
 d.b.a. ASCENT GEOMATICS SOLUTIONS



SHEET 2 OF 2



FIELD DATE:  
09-29-17

DRAWING DATE:  
06-14-18

BY:  
SZ

CHECKED:  
IJM

WELL NAME:  
DUCLAIR 16-9HN

SURFACE LOCATION:  
SW 1/4 SE 1/4 SEC. 9, T8N, R60W, 6TH P.M.  
 WELD COUNTY, COLORADO

PREPARED FOR:

