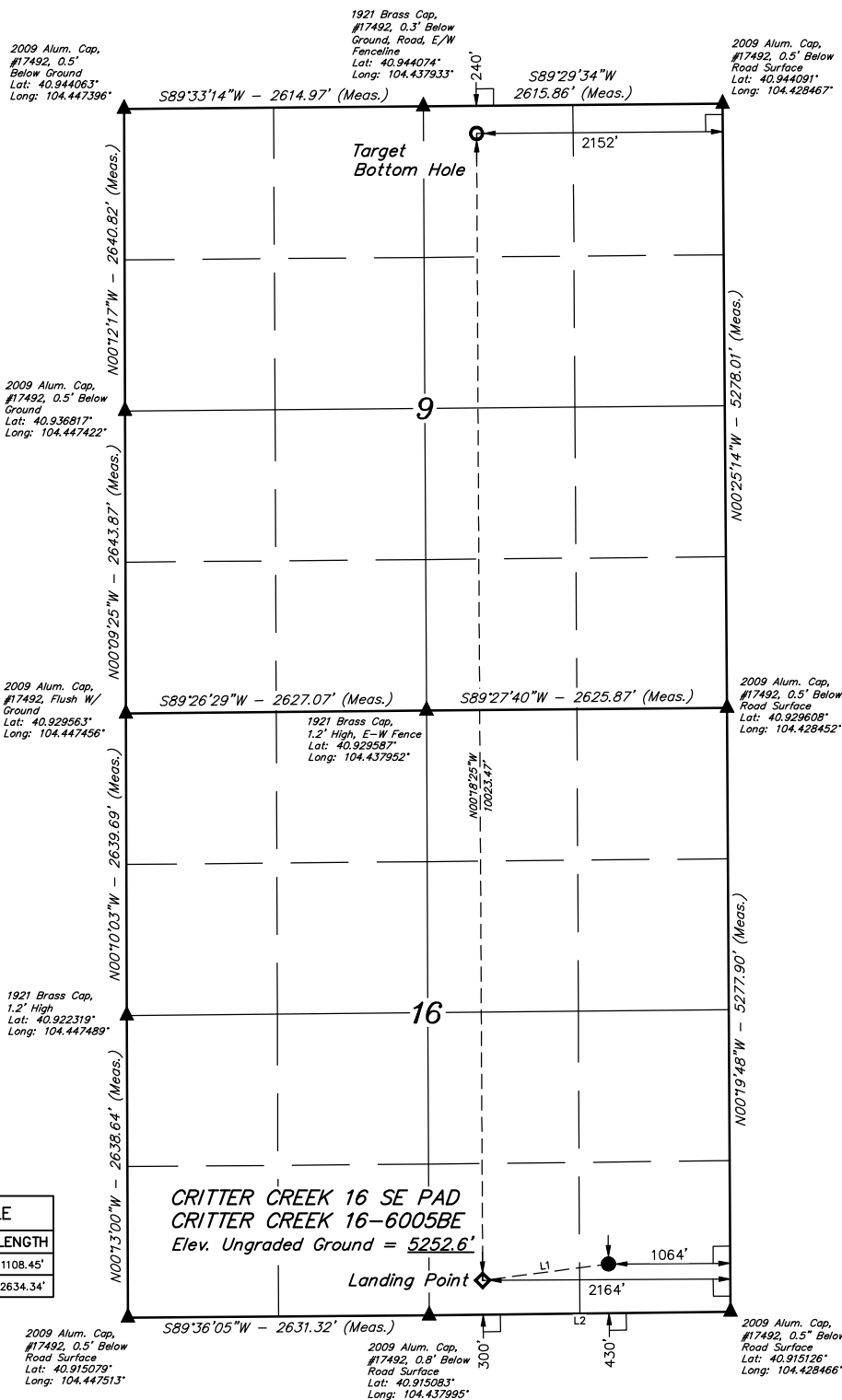


LEGEND:

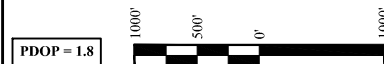
- 90° SYMBOL
- PROPOSED WELLHEAD.
- LANDING POINT.
- TARGET BOTTOM HOLE.
- SECTION CORNERS LOCATED. (NAD 83)

T11N, R63W, 6th P.M.



LINE TABLE		
LINE	DIRECTION	LENGTH
L1	S82°33'46"W	1108.45'
L2	S89°17'35"W	2634.34'

CRITTER CREEK 16 SE PAD
CRITTER CREEK 16-6005BE
Elev. Ungraded Ground = 5252.6'



NAD 83 (SURFACE LOCATION)	NAD 83 (LANDING POINT)	NAD 83 (TARGET BOTTOM HOLE)
LATITUDE = 40°54'58.64" (40.916288°)	LATITUDE = 40°54'57.29" (40.915914°)	LATITUDE = 40°56'36.31" (40.943418°)
LONGITUDE = 104°25'56.33" (104.432314°)	LONGITUDE = 104°26'10.66" (104.436293°)	LONGITUDE = 104°26'10.51" (104.436254°)
NAD 27 (SURFACE LOCATION)	NAD 27 (LANDING POINT)	NAD 27 (TARGET BOTTOM HOLE)
LATITUDE = 40°54'58.70" (40.916306°)	LATITUDE = 40°54'57.35" (40.915932°)	LATITUDE = 40°56'36.37" (40.943435°)
LONGITUDE = 104°25'54.49" (104.431802°)	LONGITUDE = 104°26'08.81" (104.435781°)	LONGITUDE = 104°26'08.67" (104.435741°)
STATE PLANE NAD 83 (CO. NORTH)	STATE PLANE NAD 83 (CO. NORTH)	STATE PLANE NAD 83 (CO. NORTH)
N: 1578432.36' E: 3295089.66'	N: 1578282.82' E: 3293091.61'	N: 1588303.38' E: 3293882.32'
STATE PLANE NAD 27 (CO. NORTH)	STATE PLANE NAD 27 (CO. NORTH)	STATE PLANE NAD 27 (CO. NORTH)
N: 578430.38' E: 2295239.08'	N: 578280.84' E: 2294141.03'	N: 588301.21' E: 2294031.80'

CERTIFICATE OF RECORD
THIS IS TO CERTIFY THAT THE ABOVE SURVEY WAS PREPARED FROM THE NOTES OF ACTUAL SURVEYS MADE BY ME OR UNDER MY SUPERVISION AND THAT THE SAME ARE TRUE AND CORRECT TO THE BEST OF MY KNOWLEDGE AND BELIEF.

RECORDED LAND SURVEYOR
RECORDING NO. 28285
STATE OF COLORADO
JAN 18 2018

BASIS OF BEARINGS
TRANSVERSE MERCATOR PROJECTION WITH A CENTRAL MERIDIAN OF W105°00'00".
BASIS OF ELEVATION
OPUS SOLUTION GENERATED NAVD 88



UELS, LLC
Corporate Office * 85 South 200 East
Vernal, UT 84078 * (435) 789-1017



HIGHPOINT OPERATING CORPORATION
CRITTER CREEK 16 SE
CRITTER CREEK 16-6005BE
SE 1/4 SE 1/4, SECTION 16, T11N, R63W, 6th P.M.
WELD COUNTY, COLORADO

SURVEYED BY	MATTHEW MILLER, C.M.	04-18-18	SCALE
DRAWN BY	C.C.	04-19-18	1" = 1000'

WELL LOCATION PLAT