

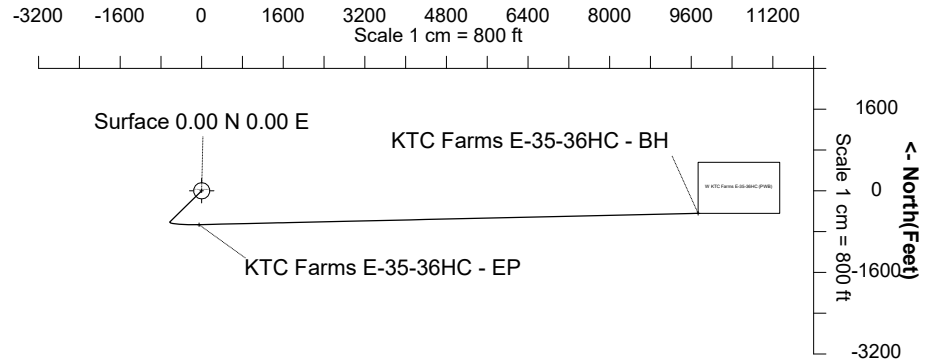
BAYSWATER E & P, LLC

Location	Weld County, CO	Slot	KTC Farms E-35-36HC
Field	WATTENBERG	Well	W KTC Farms E-35-36HC
Installation	KTC Farms Pad	Wellbore	W KTC Farms E-35-36HC (PWB)

East (Feet) ->

N

GRID



Nov-21-2017

EMM-2015 [2000.0-2020.0] Dip: 66.99 deg Field: 52425.0 nT

Lat: N40 32 17.1492 Long: W104 45 9.2160 Elev: 4861.00 ft

Magnetic North is 8.14 deg East of True North

GRID North is 0.48 deg East of True North

To correct azimuth from True to GRID subtract 0.48 deg

To correct azimuth from Magnetic to GRID add 7.66 deg

Created by admin

Date plotted 22-Nov-2017

Plot reference is W KTC Farms E-35-36HC (PWB).

Ref wellpath is W KTC Farms E-35-36HC (PWP#1).

Coordinates are in Feet reference KTC Farms E-35-36HC.

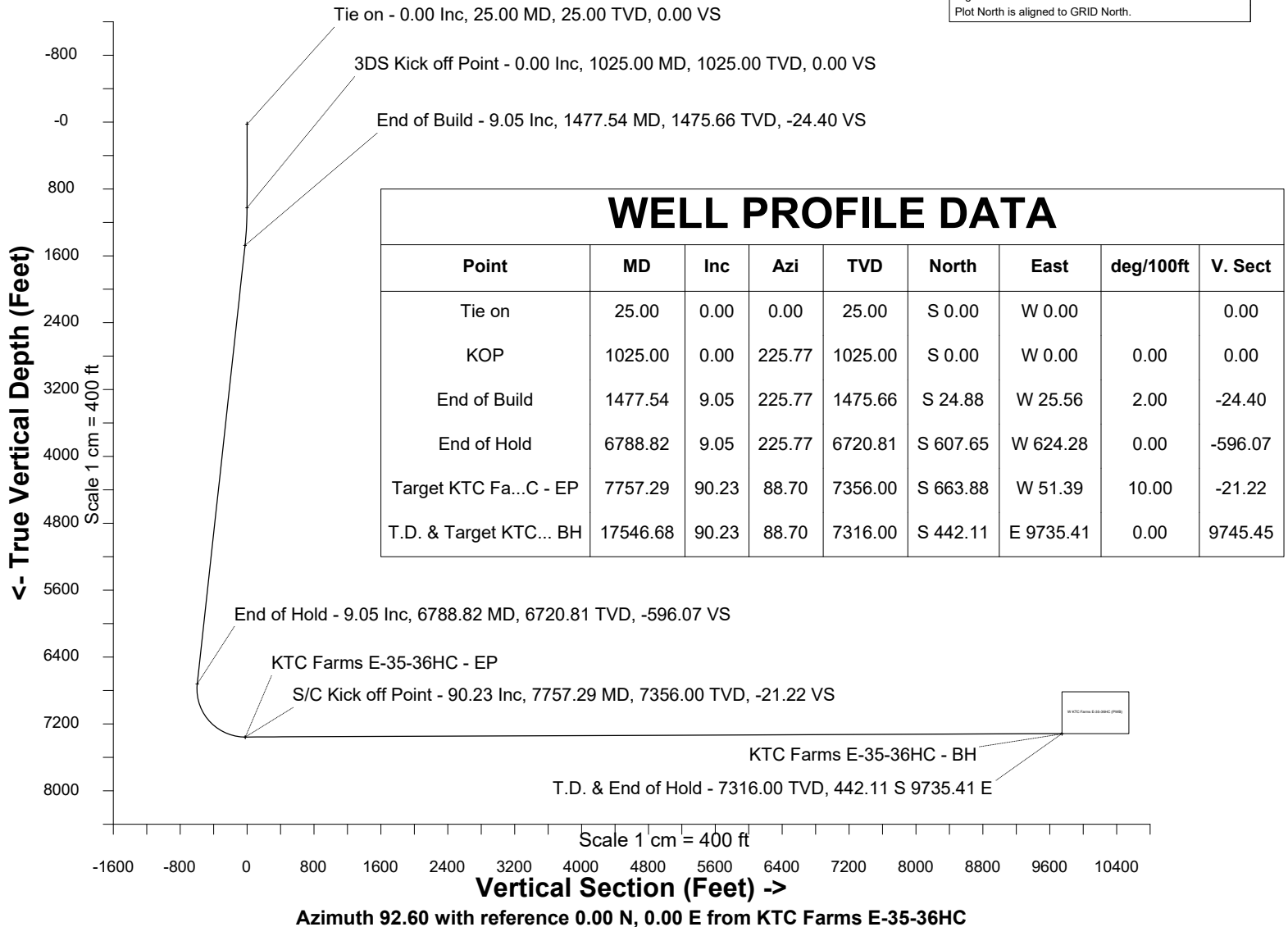
True Vertical Depths are reference Rig Datum.

Measured Depths are reference Rig Datum.

Rig Datum: Planned Datum #1

Rig Datum to Mean Sea Level: 4886.00 ft.

Plot North is aligned to GRID North.





Wellhead Details							
Name	Latitude	Longitude	Northing	Easting	North	East	Slot Elevation Above Ground
KTC Farms E-35-36HC	40.53789100	-104.75255600	1439670.0096	3207745.0096	75.04S	1.74E	0.00

Declination		
Date	Source	Time
Nov-21-2017	EMM-2015 [2000.0-2020.0]	10:51

Installation Details						
Name	Installation Position (Latitude)	Installation Position (Longitude)	Northing	Easting	Coord System Name	North Alignment
KTC Farms Pad	40.53809700	-104.75256000	1439745.0452	3207743.2653	CO83-NF on NORTH AMERICAN DATUM 1983 datum	Grid

Summary Wellpath									
MD[ft]	Inc[deg]	Azi[deg]	TVD[ft]	North[ft]	East[ft]	Dogleg [deg/100ft]	Vertical Section[ft]	Northing	Easting
25.00	0.00	0.000	25.00	0.00N	0.00E		0.00	1439670.01	3207745.01
1025.00	0.00	225.770	1025.00	0.00N	0.00E	==>	0.00	1439670.01	3207745.01
1477.54	9.05	225.770	1475.66	24.88S	25.56W	2.00	-24.40	1439645.13	3207719.45
6788.82	9.05	225.770	6720.81	607.65S	624.28W	==>	-596.07	1439062.38	3207120.75
7757.29	90.23	88.700	7356.00	663.88S	51.39W	10.00	-21.22	1439006.15	3207693.62
17546.68	90.23	88.700	7316.00	442.11S	9735.41E	==>	9745.45	1439227.91	3217480.10

Interpolated Wellpath								
MD[ft]	Inc[deg]	Azi[deg]	TVD[ft]	North[ft]	East[ft]	Dogleg [deg/100ft]	Vertical Section[ft]	All Station Comments
0.00	0.00	0.000	0.00	0.00N	0.00E		0.00	Rig Datum
25.00	0.00	0.000	25.00	0.00N	0.00E	==>	0.00	Slot Datum
100.00	0.00	0.000	100.00	0.00N	0.00E	==>	0.00	
200.00	0.00	0.000	200.00	0.00N	0.00E	==>	0.00	
300.00	0.00	0.000	300.00	0.00N	0.00E	==>	0.00	
400.00	0.00	0.000	400.00	0.00N	0.00E	==>	0.00	
500.00	0.00	0.000	500.00	0.00N	0.00E	==>	0.00	
600.00	0.00	0.000	600.00	0.00N	0.00E	==>	0.00	
700.00	0.00	0.000	700.00	0.00N	0.00E	==>	0.00	
800.00	0.00	0.000	800.00	0.00N	0.00E	==>	0.00	
900.00	0.00	0.000	900.00	0.00N	0.00E	==>	0.00	
1000.00	0.00	0.000	1000.00	0.00N	0.00E	==>	0.00	
1100.00	1.50	225.770	1099.99	0.68S	0.70W	2.00	-0.67	
1200.00	3.50	225.770	1199.89	3.73S	3.83W	2.00	-3.66	
1300.00	5.50	225.770	1299.58	9.20S	9.45W	2.00	-9.02	
1400.00	7.50	225.770	1398.93	17.09S	17.56W	2.00	-16.77	
1500.00	9.05	225.770	1497.84	27.34S	28.09W	==>	-26.82	
1600.00	9.05	225.770	1596.60	38.32S	39.36W	==>	-37.59	
1700.00	9.05	225.770	1695.35	49.29S	50.64W	==>	-48.35	
1800.00	9.05	225.770	1794.11	60.26S	61.91W	==>	-59.11	
1900.00	9.05	225.770	1892.86	71.23S	73.18W	==>	-69.88	
2000.00	9.05	225.770	1991.62	82.20S	84.45W	==>	-80.64	
2100.00	9.05	225.770	2090.37	93.18S	95.73W	==>	-91.40	
2200.00	9.05	225.770	2189.13	104.15S	107.00W	==>	-102.16	
2300.00	9.05	225.770	2287.88	115.12S	118.27W	==>	-112.93	
2400.00	9.05	225.770	2386.64	126.09S	129.55W	==>	-123.69	
2500.00	9.05	225.770	2485.39	137.07S	140.82W	==>	-134.45	
2600.00	9.05	225.770	2584.14	148.04S	152.09W	==>	-145.22	
2700.00	9.05	225.770	2682.90	159.01S	163.36W	==>	-155.98	
2800.00	9.05	225.770	2781.65	169.98S	174.64W	==>	-166.74	
2900.00	9.05	225.770	2880.41	180.96S	185.91W	==>	-177.51	
3000.00	9.05	225.770	2979.16	191.93S	197.18W	==>	-188.27	

All data is in Feet unless otherwise stated
Coordinates are from Slot MD's are from Rig and TVD's are from Rig (Planned Datum #1 4886.0ft above Mean Sea Level)
Vertical Section is from 0.00N 0.00E on azimuth 92.600 degrees
Bottom hole distance is 9745.45 Feet on azimuth 92.60 degrees from Wellhead
Calculation method uses Minimum Curvature method
Prepared by Microsoft
Date Printed: 22-Nov-2017



SYSDRILL
Well Design Combined Report
Wellbore: W KTC Farms E-35-36HC (PWB)



Interpolated Wellpath								
MD[ft]	Inc[deg]	Azi[deg]	TVD[ft]	North[ft]	East[ft]	Dogleg [deg/100ft]	Vertical Section[ft]	All Station Comments
3100.00	9.05	225.770	3077.92	202.90S	208.45W	==>	-199.03	
3200.00	9.05	225.770	3176.67	213.87S	219.73W	==>	-209.80	
3300.00	9.05	225.770	3275.43	224.84S	231.00W	==>	-220.56	
3400.00	9.05	225.770	3374.18	235.82S	242.27W	==>	-231.32	
3500.00	9.05	225.770	3472.94	246.79S	253.54W	==>	-242.09	
3600.00	9.05	225.770	3571.69	257.76S	264.82W	==>	-252.85	
3700.00	9.05	225.770	3670.45	268.73S	276.09W	==>	-263.61	
3800.00	9.05	225.770	3769.20	279.71S	287.36W	==>	-274.38	
3900.00	9.05	225.770	3867.96	290.68S	298.63W	==>	-285.14	
4000.00	9.05	225.770	3966.71	301.65S	309.91W	==>	-295.90	
4100.00	9.05	225.770	4065.47	312.62S	321.18W	==>	-306.67	
4200.00	9.05	225.770	4164.22	323.60S	332.45W	==>	-317.43	
4300.00	9.05	225.770	4262.98	334.57S	343.73W	==>	-328.19	
4400.00	9.05	225.770	4361.73	345.54S	355.00W	==>	-338.96	
4500.00	9.05	225.770	4460.49	356.51S	366.27W	==>	-349.72	
4600.00	9.05	225.770	4559.24	367.49S	377.54W	==>	-360.48	
4700.00	9.05	225.770	4658.00	378.46S	388.82W	==>	-371.25	
4800.00	9.05	225.770	4756.75	389.43S	400.09W	==>	-382.01	
4900.00	9.05	225.770	4855.51	400.40S	411.36W	==>	-392.77	
5000.00	9.05	225.770	4954.26	411.37S	422.63W	==>	-403.54	
5100.00	9.05	225.770	5053.02	422.35S	433.91W	==>	-414.30	
5200.00	9.05	225.770	5151.77	433.32S	445.18W	==>	-425.06	
5300.00	9.05	225.770	5250.53	444.29S	456.45W	==>	-435.83	
5400.00	9.05	225.770	5349.28	455.26S	467.72W	==>	-446.59	
5500.00	9.05	225.770	5448.04	466.24S	479.00W	==>	-457.35	
5600.00	9.05	225.770	5546.79	477.21S	490.27W	==>	-468.12	
5700.00	9.05	225.770	5645.55	488.18S	501.54W	==>	-478.88	
5800.00	9.05	225.770	5744.30	499.15S	512.81W	==>	-489.64	
5900.00	9.05	225.770	5843.06	510.13S	524.09W	==>	-500.41	
6000.00	9.05	225.770	5941.81	521.10S	535.36W	==>	-511.17	
6100.00	9.05	225.770	6040.57	532.07S	546.63W	==>	-521.93	
6200.00	9.05	225.770	6139.32	543.04S	557.91W	==>	-532.70	
6300.00	9.05	225.770	6238.08	554.01S	569.18W	==>	-543.46	
6400.00	9.05	225.770	6336.83	564.99S	580.45W	==>	-554.22	
6500.00	9.05	225.770	6435.59	575.96S	591.72W	==>	-564.98	
6600.00	9.05	225.770	6534.34	586.93S	603.00W	==>	-575.75	
6700.00	9.05	225.770	6633.10	597.90S	614.27W	==>	-586.51	
6800.00	8.27	220.440	6731.86	608.88S	625.43W	10.00	-597.17	
6900.00	7.66	142.580	6831.15	619.67S	626.05W	10.00	-597.30	
7000.00	15.75	111.370	6929.08	629.93S	609.33W	10.00	-580.12	
7100.00	25.23	102.040	7022.67	639.34S	575.76W	10.00	-546.16	
7200.00	34.99	97.650	7109.08	647.63S	526.37W	10.00	-496.45	
7300.00	44.85	94.990	7185.69	654.53S	462.67W	10.00	-432.50	
7400.00	54.74	93.130	7250.16	659.84S	386.58W	10.00	-356.25	
7500.00	64.67	91.670	7300.54	663.40S	300.42W	10.00	-270.01	
7600.00	74.60	90.440	7335.31	665.09S	206.81W	10.00	-176.42	
7700.00	84.54	89.320	7353.39	664.87S	108.58W	10.00	-78.31	
7800.00	90.23	88.700	7355.83	662.92S	8.69W	==>	21.40	
7900.00	90.23	88.700	7355.42	660.65S	91.29E	==>	121.16	
8000.00	90.23	88.700	7355.01	658.39S	191.26E	==>	220.93	
8100.00	90.23	88.700	7354.60	656.12S	291.23E	==>	320.70	
8200.00	90.23	88.700	7354.19	653.86S	391.21E	==>	420.47	
8300.00	90.23	88.700	7353.78	651.59S	491.18E	==>	520.23	
8400.00	90.23	88.700	7353.37	649.32S	591.15E	==>	620.00	
8500.00	90.23	88.700	7352.97	647.06S	691.13E	==>	719.77	
8600.00	90.23	88.700	7352.56	644.79S	791.10E	==>	819.54	
8700.00	90.23	88.700	7352.15	642.53S	891.07E	==>	919.31	
8800.00	90.23	88.700	7351.74	640.26S	991.05E	==>	1019.07	
8900.00	90.23	88.700	7351.33	638.00S	1091.02E	==>	1118.84	

All data is in Feet unless otherwise stated
Coordinates are from Slot MD's are from Rig and TVD's are from Rig (Planned Datum #1 4886.0ft above Mean Sea Level)
Vertical Section is from 0.00N 0.00E on azimuth 92.600 degrees
Bottom hole distance is 9745.45 Feet on azimuth 92.60 degrees from Wellhead
Calculation method uses Minimum Curvature method
Prepared by Microsoft
Date Printed: 22-Nov-2017



SYSDRILL
Well Design Combined Report
Wellbore: W KTC Farms E-35-36HC (PWB)



Interpolated Wellpath								
MD[ft]	Inc[deg]	Azi[deg]	TVD[ft]	North[ft]	East[ft]	Dogleg [deg/100ft]	Vertical Section[ft]	All Station Comments
9000.00	90.23	88.700	7350.92	635.73S	1190.99E	==>	1218.61	
9100.00	90.23	88.700	7350.51	633.47S	1290.97E	==>	1318.38	
9200.00	90.23	88.700	7350.11	631.20S	1390.94E	==>	1418.14	
9300.00	90.23	88.700	7349.70	628.94S	1490.91E	==>	1517.91	
9400.00	90.23	88.700	7349.29	626.67S	1590.89E	==>	1617.68	
9500.00	90.23	88.700	7348.88	624.41S	1690.86E	==>	1717.45	
9600.00	90.23	88.700	7348.47	622.14S	1790.84E	==>	1817.22	
9700.00	90.23	88.700	7348.06	619.87S	1890.81E	==>	1916.98	
9800.00	90.23	88.700	7347.65	617.61S	1990.78E	==>	2016.75	
9900.00	90.23	88.700	7347.24	615.34S	2090.76E	==>	2116.52	
10000.00	90.23	88.700	7346.84	613.08S	2190.73E	==>	2216.29	
10100.00	90.23	88.700	7346.43	610.81S	2290.70E	==>	2316.05	
10200.00	90.23	88.700	7346.02	608.55S	2390.68E	==>	2415.82	
10300.00	90.23	88.700	7345.61	606.28S	2490.65E	==>	2515.59	
10400.00	90.23	88.700	7345.20	604.02S	2590.62E	==>	2615.36	
10500.00	90.23	88.700	7344.79	601.75S	2690.60E	==>	2715.13	
10600.00	90.23	88.700	7344.38	599.49S	2790.57E	==>	2814.89	
10700.00	90.23	88.700	7343.98	597.22S	2890.54E	==>	2914.66	
10800.00	90.23	88.700	7343.57	594.95S	2990.52E	==>	3014.43	
10900.00	90.23	88.700	7343.16	592.69S	3090.49E	==>	3114.20	
11000.00	90.23	88.700	7342.75	590.42S	3190.46E	==>	3213.97	
11100.00	90.23	88.700	7342.34	588.16S	3290.44E	==>	3313.73	
11200.00	90.23	88.700	7341.93	585.89S	3390.41E	==>	3413.50	
11300.00	90.23	88.700	7341.52	583.63S	3490.39E	==>	3513.27	
11400.00	90.23	88.700	7341.12	581.36S	3590.36E	==>	3613.04	
11500.00	90.23	88.700	7340.71	579.10S	3690.33E	==>	3712.80	
11600.00	90.23	88.700	7340.30	576.83S	3790.31E	==>	3812.57	
11700.00	90.23	88.700	7339.89	574.57S	3890.28E	==>	3912.34	
11800.00	90.23	88.700	7339.48	572.30S	3990.25E	==>	4012.11	
11900.00	90.23	88.700	7339.07	570.04S	4090.23E	==>	4111.88	
12000.00	90.23	88.700	7338.66	567.77S	4190.20E	==>	4211.64	
12100.00	90.23	88.700	7338.26	565.50S	4290.17E	==>	4311.41	
12200.00	90.23	88.700	7337.85	563.24S	4390.15E	==>	4411.18	
12300.00	90.23	88.700	7337.44	560.97S	4490.12E	==>	4510.95	
12400.00	90.23	88.700	7337.03	558.71S	4590.09E	==>	4610.71	
12500.00	90.23	88.700	7336.62	556.44S	4690.07E	==>	4710.48	
12600.00	90.23	88.700	7336.21	554.18S	4790.04E	==>	4810.25	
12700.00	90.23	88.700	7335.80	551.91S	4890.01E	==>	4910.02	
12800.00	90.23	88.700	7335.40	549.65S	4989.99E	==>	5009.79	
12900.00	90.23	88.700	7334.99	547.38S	5089.96E	==>	5109.55	
13000.00	90.23	88.700	7334.58	545.12S	5189.93E	==>	5209.32	
13100.00	90.23	88.700	7334.17	542.85S	5289.91E	==>	5309.09	
13200.00	90.23	88.700	7333.76	540.58S	5389.88E	==>	5408.86	
13300.00	90.23	88.700	7333.35	538.32S	5489.86E	==>	5508.62	
13400.00	90.23	88.700	7332.94	536.05S	5589.83E	==>	5608.39	
13500.00	90.23	88.700	7332.53	533.79S	5689.80E	==>	5708.16	
13600.00	90.23	88.700	7332.13	531.52S	5789.78E	==>	5807.93	
13700.00	90.23	88.700	7331.72	529.26S	5889.75E	==>	5907.70	
13800.00	90.23	88.700	7331.31	526.99S	5989.72E	==>	6007.46	
13900.00	90.23	88.700	7330.90	524.73S	6089.70E	==>	6107.23	
14000.00	90.23	88.700	7330.49	522.46S	6189.67E	==>	6207.00	
14100.00	90.23	88.700	7330.08	520.20S	6289.64E	==>	6306.77	
14200.00	90.23	88.700	7329.67	517.93S	6389.62E	==>	6406.53	
14300.00	90.23	88.700	7329.27	515.67S	6489.59E	==>	6506.30	
14400.00	90.23	88.700	7328.86	513.40S	6589.56E	==>	6606.07	
14500.00	90.23	88.700	7328.45	511.13S	6689.54E	==>	6705.84	
14600.00	90.23	88.700	7328.04	508.87S	6789.51E	==>	6805.61	
14700.00	90.23	88.700	7327.63	506.60S	6889.48E	==>	6905.37	
14800.00	90.23	88.700	7327.22	504.34S	6989.46E	==>	7005.14	

All data is in Feet unless otherwise stated
Coordinates are from Slot MD's are from Rig and TVD's are from Rig (Planned Datum #1 4886.0ft above Mean Sea Level)
Vertical Section is from 0.00N 0.00E on azimuth 92.600 degrees
Bottom hole distance is 9745.45 Feet on azimuth 92.60 degrees from Wellhead
Calculation method uses Minimum Curvature method
Prepared by Microsoft
Date Printed: 22-Nov-2017



SYS DRILL
Well Design Combined Report
Wellbore: W KTC Farms E-35-36HC (PWB)



Interpolated Wellpath								
MD[ft]	Inc[deg]	Azi[deg]	TVD[ft]	North[ft]	East[ft]	Dogleg [deg/100ft]	Vertical Section[ft]	All Station Comments
14900.00	90.23	88.700	7326.81	502.07S	7089.43E	==>	7104.91	
15000.00	90.23	88.700	7326.41	499.81S	7189.40E	==>	7204.68	
15100.00	90.23	88.700	7326.00	497.54S	7289.38E	==>	7304.44	
15200.00	90.23	88.700	7325.59	495.28S	7389.35E	==>	7404.21	
15300.00	90.23	88.700	7325.18	493.01S	7489.33E	==>	7503.98	
15400.00	90.23	88.700	7324.77	490.75S	7589.30E	==>	7603.75	
15500.00	90.23	88.700	7324.36	488.48S	7689.27E	==>	7703.52	
15600.00	90.23	88.700	7323.95	486.21S	7789.25E	==>	7803.28	
15700.00	90.23	88.700	7323.55	483.95S	7889.22E	==>	7903.05	
15800.00	90.23	88.700	7323.14	481.68S	7989.19E	==>	8002.82	
15900.00	90.23	88.700	7322.73	479.42S	8089.17E	==>	8102.59	
16000.00	90.23	88.700	7322.32	477.15S	8189.14E	==>	8202.35	
16100.00	90.23	88.700	7321.91	474.89S	8289.11E	==>	8302.12	
16200.00	90.23	88.700	7321.50	472.62S	8389.09E	==>	8401.89	
16300.00	90.23	88.700	7321.09	470.36S	8489.06E	==>	8501.66	
16400.00	90.23	88.700	7320.69	468.09S	8589.03E	==>	8601.43	
16500.00	90.23	88.700	7320.28	465.83S	8689.01E	==>	8701.19	
16600.00	90.23	88.700	7319.87	463.56S	8788.98E	==>	8800.96	
16700.00	90.23	88.700	7319.46	461.30S	8888.95E	==>	8900.73	
16800.00	90.23	88.700	7319.05	459.03S	8988.93E	==>	9000.50	
16900.00	90.23	88.700	7318.64	456.76S	9088.90E	==>	9100.27	
17000.00	90.23	88.700	7318.23	454.50S	9188.87E	==>	9200.03	
17100.00	90.23	88.700	7317.83	452.23S	9288.85E	==>	9299.80	
17200.00	90.23	88.700	7317.42	449.97S	9388.82E	==>	9399.57	
17300.00	90.23	88.700	7317.01	447.70S	9488.80E	==>	9499.34	
17400.00	90.23	88.700	7316.60	445.44S	9588.77E	==>	9599.10	
17500.00	90.23	88.700	7316.19	443.17S	9688.74E	==>	9698.87	
17546.68	90.23	88.700	7316.00	442.11S	9735.41E	==>	9745.45	

All data is in Feet unless otherwise stated
Coordinates are from Slot MD's are from Rig and TVD's are from Rig (Planned Datum #1 4886.0ft above Mean Sea Level)
Vertical Section is from 0.00N 0.00E on azimuth 92.600 degrees
Bottom hole distance is 9745.45 Feet on azimuth 92.60 degrees from Wellhead
Calculation method uses Minimum Curvature method
Prepared by Microsoft
Date Printed: 22-Nov-2017



SYSDRILL
Well Design Combined Report
Wellbore: W KTC Farms E-35-36HC (PWB)



Targets							
Name	North[ft]	East[ft]	TVD[ft]	Latitude	Longitude	Northing	Easting
KTC Farms E-35-36HC - EP	663.88S	51.39W	7356.00	40.53607000	-104.75276100	1439006.15	3207693.62
KTC Farms E-35-36HC - BH	442.11S	9735.41E	7316.00	40.53644700	-104.71754600	1439227.91	3217480.10

Survey Tool Program					
Reference	Survey Name	MD[ft]	TVD[ft]	Survey Tool	Error Model
587272	Planned	1500.00	1497.84	WdW Rate Gyro	Standard
587271	Planned	17546.68	7316.00	ISCWSA MWD	Rev 4 + SAG + FLT

Notes



SYSDRILL
Closest Approach + Clearance Factor Summary Report
Wellbore: W KTC Farms E-35-36HC (PWB)



Ellipse separations are reported ONLY if BOTH wells have uncertainty data
Only Depth and Magnetic Reference Field error terms are correlated across tie points
Scan limit is calculated on CENTRE to CENTRE distance
Summary data uses Closest Approach clearance calculation for all minima
Hole size/Casings ARE included
Hole size/Casings are NOT subtracted from Centre-Centre distance
Confidence limit of 95.00% / 2.80 SD.

Wellbore		
Name	Created	Last Revised
W KTC Farms E-35-36HC (PWB)	Nov-21-2017	Nov-22-2017

Well		
Name	Government ID	Last Revised
W KTC Farms E-35-36HC		Nov-21-2017

Slot						
Name	Latitude	Longitude	Grid Northing	Grid Easting	North	East
KTC Farms E-35-36HC	40.53789100	-104.75255600	1439670.0096	3207745.0096	75.04S	1.74E

Installation						
Name	Installation Position (Latitude)	Installation Position (Longitude)	Easting	Northing	Coord System Name	North Alignment
KTC Farms Pad	40.53809700	-104.75256000	3207743.2653	1439745.0452	CO83-NF on NORTH AMERICAN DATUM 1983 datum	Grid

Clearance Summary							
Offset WellName	Separation [ft]	MD[ft]	Diverging From[ft]	Ellipse Separation [ft]	Ellipse MD[ft]	Clearance Factor	Clearance MD[ft]
W KTC Farms EA-35-36HN	129.59	7062.40	7062.40	70.60	7062.40	2.20	7062.40
W KTC Farms F-35-36HN	164.11	7062.40	7062.40	101.72	7062.40	2.63	7062.40
W KTC Farms D-35-36HN	168.71	7062.40	7062.40	114.58	7062.40	3.12	7062.40
W KTC Farms C-35-36HN	471.39	7062.40	7062.40	412.21	7062.40	7.97	7062.40
W KTC Farms G-35-36HN	487.11	7062.40	7062.40	425.33	7062.40	7.88	7062.40
W KTC Farms BA-35-36HN	596.25	7062.40	7062.40	538.76	7062.40	10.37	7062.40
W KTC Farms H-35-36HC	617.97	7062.40	7062.40	557.65	7062.40	10.21	7554.53
W KTC Farms B-35-36HC	626.23	7062.40	7062.40	566.09	7062.40	10.34	7554.53
W KTC Farms HA-35-36HN	697.87	7062.40	7062.40	636.34	7062.40	11.25	7554.53
W KTC Farms I-35-36HN	787.72	7062.40	7062.40	727.04	7062.40	12.67	7554.53
W KTC Farms A-35-36HN	791.70	7062.40	7062.40	732.68	7062.40	13.41	7062.40
W Wilson 1-35	1078.67	7554.53	7554.53	1007.89	7554.53	15.24	7554.53
W KTC Farms J-35-36HN	1096.97	7062.40	7062.40	1036.52	7062.40	17.69	7554.53
W KTC Farms K-35-36HC	1197.99	7062.40	7062.40	1137.64	7062.40	19.85	7062.40

All data is in Feet unless otherwise stated
Coordinates are from Slot MD's are from Rig and TVD's are from Rig (Planned Datum #1 4886.0ft above Mean Sea Level)
Vertical Section is from 0.00N 0.00E on azimuth 92.600 degrees
Prepared by Microsoft
Date Printed: 22-Nov-2017



SYSDRILL
Closest Approach + Clearance Factor Summary Report
Wellbore: W KTC Farms E-35-36HC (PWB)



Clearance Summary							
Offset WellName	Separation [ft]	MD[ft]	Diverging From[ft]	Ellipse Separation [ft]	Ellipse MD[ft]	Clearance Factor	Clearance MD[ft]
W Wilson 35-25	1287.57	7554.53	7554.53	1212.92	7554.53	17.25	7554.53
W KTC Farms KA-35-36HN	1292.53	7062.40	7062.40	1232.29	7062.40	20.94	7554.53
W KTC Farms L-35-36HN	1350.55	7062.40	7062.40	1290.27	7062.40	22.41	7062.40
W Wilson 35-21	1562.04	7554.53	7554.53	1488.73	7554.53	21.31	7554.53
W Wilson 35-24	1947.55	7554.53	7554.53	1872.86	7554.53	26.08	7554.53
W Noffsinger 35-13	3069.75	7554.53	7554.53	2994.88	7554.53	41.00	7554.53
W Noffsinger 35-15	3776.11	7554.53	7554.53	3701.70	7554.53	50.75	7554.53
W SRC TK 11-36D	5653.77	7554.53	7554.53	5580.12	7554.53	76.76	7554.53
W SRC TK 12-36D	5735.77	7554.53	7554.53	5640.68	7554.53	60.32	7554.53
W SRC TK 36AD	6361.52	7554.53	7554.53	6280.18	7554.53	78.20	7554.53
W SRC TK 22-36D	7055.30	7554.53	7554.53	6962.46	7554.53	75.99	7554.53
W SRC TK 21-36D	7282.48	7554.53	7554.53	7208.44	7554.53	98.36	7554.53
W SRC Haythorn 32-36D	8301.37	7554.53	7554.53	8213.29	7554.53	94.25	7554.53
W SRC Haythorn 31-36D	8358.10	7554.53	7554.53	8283.95	7554.53	112.72	7554.53
W SRC Haythorn 36CD	9074.17	7554.53	7554.53	8998.73	7554.53	120.28	7554.53
W SRC Haythorn 41-36D	9861.35	7554.53	7554.53	9787.69	7554.53	133.88	7554.53
W SRC Haythorn 42-36D	9870.13	7554.53	7554.53	9786.46	7554.53	117.96	7554.53

Factor



