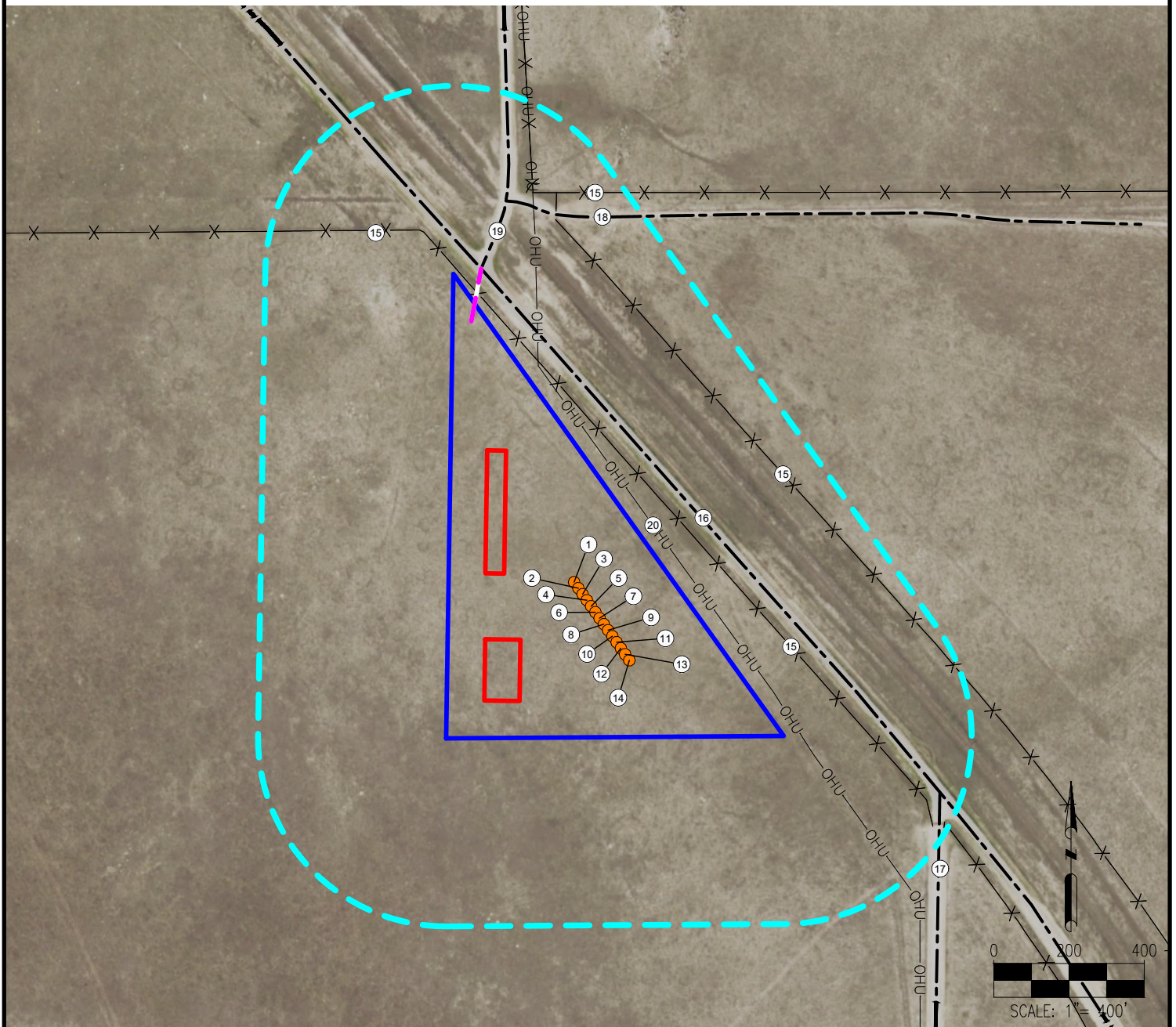


# ROUEN PAD LOCATION DRAWING



- |                    |                      |   |
|--------------------|----------------------|---|
| 1. ROUEN FED 3-1HN | 9. ROUEN FED 3-9HN   | 15. FENCES ARE ±619' NE, 331' NE, 1138' NW, 1132' N |
| 2. ROUEN FED 3-2HC | 10. ROUEN FED 3-10HC | 16. WELD COUNTY ROAD 390 IS ±380' NE                |
| 3. ROUEN FED 3-3HN | 11. ROUEN FED 3-11HN | 17. WELD COUNTY ROAD 105 IS ±1016' SE               |
| 4. ROUEN FED 3-4HN | 12. ROUEN FED 3-12HN | 18. PRIVATE ROAD IS ± 1071' N                       |
| 5. ROUEN FED 3-5HN | 13. ROUEN FED 3-13HC | 19. OSWEGO AVE IS ±981' N                           |
| 6. ROUEN FED 3-6HC | 14. ROUEN FED 3-14HN | 20. OVERHEAD UTILITIES ARE ±260' NE                 |
| 7. ROUEN FED 3-7HN |                      |   |
| 8. ROUEN FED 3-8HN |                      |   |

## LEGEND:

- |                              |                            |                            |
|------------------------------|----------------------------|----------------------------|
| ● = PROPOSED WELL            | --- = PROPOSED ACCESS ROAD | ▭ = DISTURBANCE AREA       |
| --- = EXISTING ROAD          | ---X---X--- = FENCE        | ▭ = PROPOSED FACILITY BERM |
| ---OHU--- = OVERHEAD UTILITY | --- = 500' RADIUS          |                            |

## MEASURED FROM NEAREST WELL OR FACILITY:

- |                               |          |
|-------------------------------|----------|
| BUILDING                      | ±2357' N |
| BUILDING UNIT                 | ±2412' N |
| PUBLIC ROAD (COUNTY ROAD 390) | ±288' NE |
| PROPERTY LINE (USA)           | ±70' W   |
| UTILITY (POWERLINE)           | ±217' NE |
| RAILROAD                      | ±5280' S |

## MEASURED FROM NEAREST EDGE OF DISTURBANCE:

- |                                |        |
|--------------------------------|--------|
| SURFACE WATER (LOW LYING AREA) | ±1963N |
|--------------------------------|--------|

## MEASURED FROM NEAREST EDGE OF DISTURBANCE:

- |                |          |                  |
|----------------|----------|------------------|
| WATER WELL     | ±1902' N | SWL = 0'         |
| PERMIT: 38118  |          | RECEIPT: 9064056 |
| WATER WELL     | ±1876' N | SWL = 170'       |
| PERMIT: 276779 |          | RECEIPT: 3626257 |

## REFERENCE LOCATION

**\*\*ROUEN FED 3-7HN\*\***

LAT: 40.696144° N  
LONG: 104.070079° W  
ELEVATION: 4950'  
1062' FNL & 921' FEL  
PDOP: 1.5  
GPS OPERATOR: RYAN DESMOND

## DISCLAIMER:

THIS PLOT DOES NOT REPRESENT A MONUMENTED LAND SURVEY AND SHOULD NOT BE RELIED UPON TO DETERMINE BOUNDARY LINES, PROPERTY OWNERSHIP OR OTHER PROPERTY INTERESTS. PARCEL LINES, IF DEPICTED HAVE NOT BEEN FIELD VERIFIED AND MAY BE BASED UPON PUBLICLY AVAILABLE DATA THAT ALSO HAS NOT BEEN INDEPENDENTLY VERIFIED.

## DATA SOURCE:

AERIAL IMAGERY: NAIP 2017  
WATER WELLS: COLORADO DWR  
NHD: USGS

PUBLICLY AVAILABLE DATA SOURCES HAVE NOT BEEN INDEPENDENTLY VERIFIED BY ASCENT.

## DISTURBANCE ACREAGE:

12.7 ACRES DRILLING OPERATIONS  
7.1 ACRES INTERIM RECLAIM

CURRENT SURFACE USE: IMPROVED PASTURE  
FUTURE SURFACE USE: IMPROVED PASTURE

PREPARED FOR:



7535 Hilltop Circle  
Denver, CO 80221  
(303) 928-7128  
www.ascentgeomatics.com

FIELD DATE:  
04-27-18

DRAWING DATE:  
04-30-18

BY:  
BLG

CHECKED:  
MMP

SITE NAME:  
ROUEN PAD

SURFACE LOCATION:

LOT 1 NE 1/4 SEC. 3, T8N, R60W, 6TH P.M.  
WELD COUNTY, COLORADO