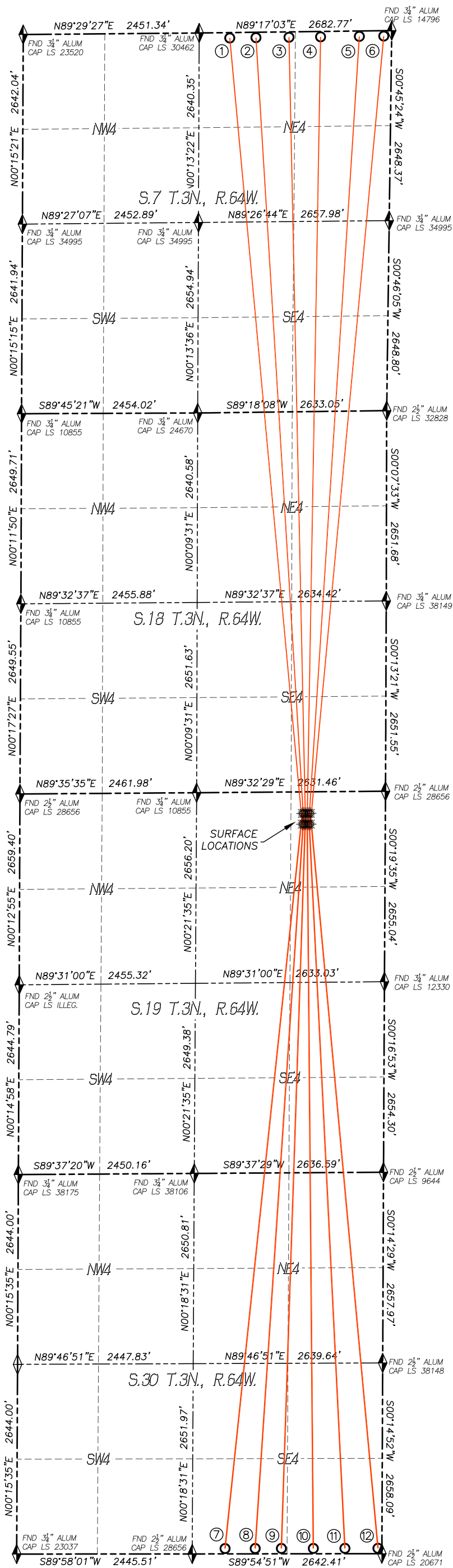


MULTI WELL PALN  
D19-01 WELL PAD

SECTION 19, TOWNSHIP 3 NORTH, RANGE 64 WEST  
OF THE 6TH P.M., WELD COUNTY



Bottom Hole Location						
Slot	Well Name	Latitude	Longitude	Footage		BH Location STR
1	Independence D18-744	N40.24686°	W104.59221°	75' FNL	2255' FEL	7-3N-64W
2	Independence D18-739	N40.24688°	W104.59091°	75' FNL	1890' FEL	7-3N-64W
3	Independence D18-732	N40.24689°	W104.58926°	75' FNL	1430' FEL	7-3N-64W
4	Independence D18-725	N40.24691°	W104.58768°	75' FNL	990' FEL	7-3N-64W
5	Independence D18-717	N40.24693°	W104.58575°	75' FNL	450' FEL	7-3N-64W
6	Independence D18-712	N40.24694°	W104.58453°	75' FNL	110' FEL	7-3N-64W
7	Independence D30-743	N40.18909°	W104.59243°	75' FSL	2185' FEL	30-3N-64W
8	Independence D30-737	N40.18910°	W104.59092°	75' FSL	1765' FEL	30-3N-64W
9	Independence D30-731	N40.18910°	W104.58962°	75' FSL	1400' FEL	30-3N-64W
10	Independence D30-724	N40.18910°	W104.58802°	75' FSL	955' FEL	30-3N-64W
11	Independence D30-718	N40.18910°	W104.58645°	75' FSL	515' FEL	30-3N-64W
12	Independence D30-711	N40.18910°	W104.58480°	75' FSL	55' FEL	30-3N-64W

**LEGEND**

- FOUND MONUMENT
- CALCULATED POSITION
- PROPOSED WELL
- BOTTOM HOLE
- ABANDONED WELL
- EXISTING WELL

**DALEY LAND SURVEYING, INC.**  
970.302.4159