

LAND SURVEYOR'S CERTIFICATION

LAMP, RYNEARSON & ASSOCIATES, INC., OF FT. COLLINS, COLORADO HAS, IN ACCORDANCE WITH A REQUEST FROM RYAN BRUNER, AXIS EXPLORATION, DETERMINED THE SURFACE LOCATION OF THE WELL DESIGNATED AS JAMASO 4-65 5-6-11 TO BE 2427' FROM THE NORTH LINE AND 481' FROM THE WEST LINE OF SECTION 4, TOWNSHIP 4 SOUTH, RANGE 65 WEST OF THE 6TH P.M., ARAPAHOE COUNTY, COLORADO.



0 1000
SCALE: 1"= 1000'
U.S. SURVEY FEET

PETER ELLIOTT PAULUS COLORADO PLS 38318
DATE OF SURVEY: 01/09/2018 (SECTION CONTROL)
DATE OF SURVEY: 01/18/2018 (WELL LOCATION)

NOTES:

- DISTANCES ARE MEASURED PERPENDICULAR TO NEAREST SECTION LINE AND ARE SHOWN ON THE SAME SIDE OF THE SECTION LINE WHERE THE WELL IS LOCATED.
- THIS MAP DOES NOT REPRESENT A MONUMENTED BOUNDARY SURVEY. SIXTEENTH CORNER LOCATIONS ARE COMPUTED, UNLESS OTHERWISE NOTED.
- BOTTOM HOLE LOCATIONS AND HORIZONTAL COMPLETION ZONE PROVIDED BY OTHERS.
- ALL REBAR AND CAPS ARE MEASURED IN INCHES

BASIS OF BEARING:

THE WEST LINE OF THE SOUTHWEST QUARTER OF SECTION 4-T4S-R65W BEARS N00°22'38"W FOR 2647.43 FT BETWEEN THE SOUTHWEST CORNER OF SECTION 4 MONUMENTED WITH 2 1/2" A.C. IN R.B. STAMPED "PLS 29430" AND THE WEST QUARTER CORNER OF SECTION 4 MONUMENTED WITH 3 1/4" A.C. IN R.B. STAMPED "LS 34178" BASED ON THE COLORADO CENTRAL 0502 STATE PLANE COORDINATE SYSTEM

ELEVATIONS ARE BASED ON NAVD 88, AS OBSERVED FROM GPS OBSERVATIONS



LAMP RYNEARSON
& ASSOCIATES

4715 Innovation Drive 970.226.0342 | P
Fort Collins, CO 80525 970.226.0879 | F
www.LRA-inc.com

PROPOSED WELL LOCATION EXHIBIT
JAMASO 4-65 5-6-11
1 OF 3

DRAWN BY
CPP

DATE
03/30

COGCC ID

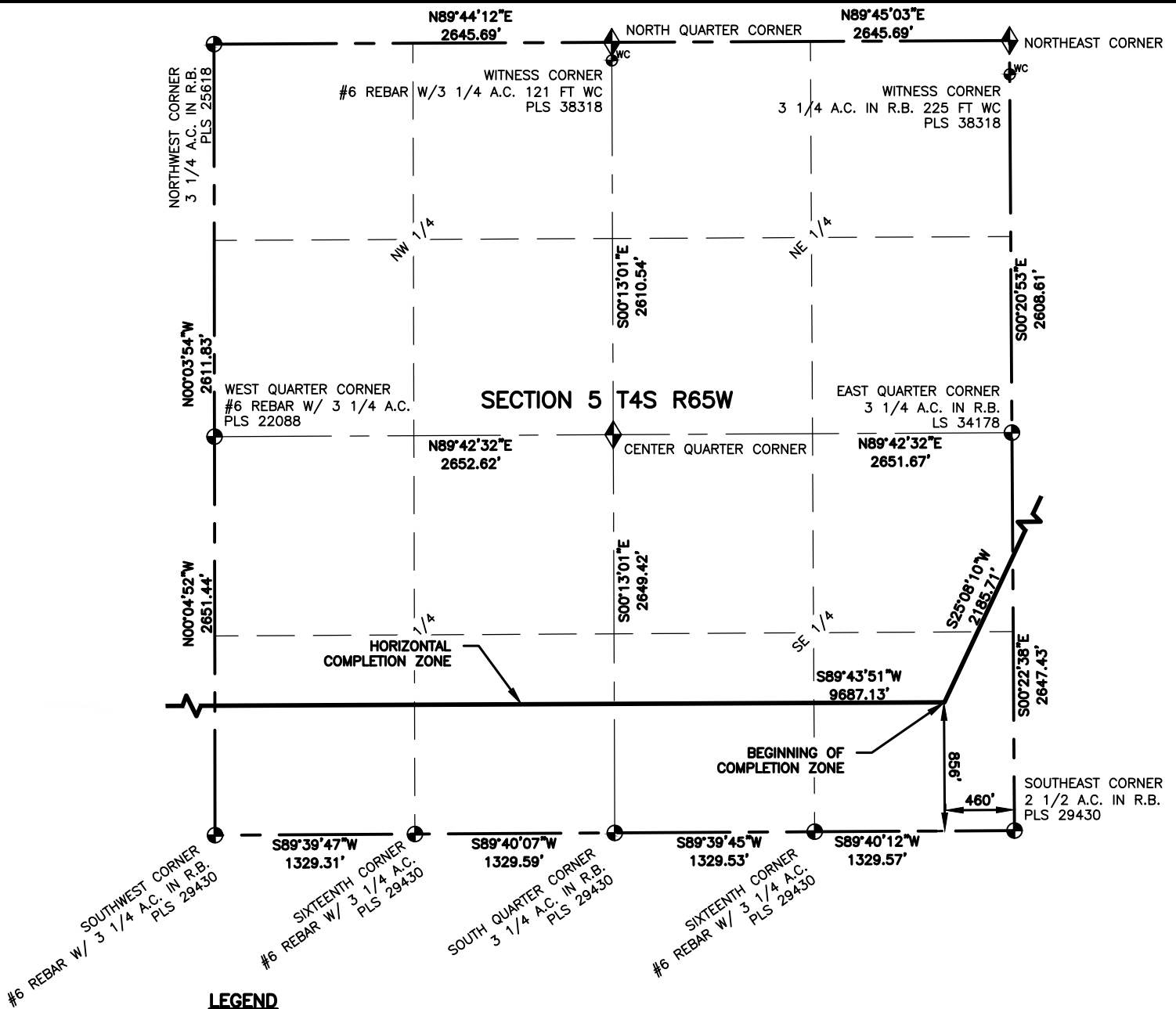
PROJECT - TASK NUMBER
0218003.03

BOOK AND PAGE

SURFACE - LOCATION

PATH\FILENAME L:\Engineering\0218003.03 XOG - Jamaso\SURVEY\DRAWINGS\EXHIBITS\0218003.03 WP-K1.dwg

NW/4 SW/4 SEC 4 T4S R65W,
CITY OF AURORA



NOTES:

- DISTANCES ARE MEASURED PERPENDICULAR TO NEAREST SECTION LINE AND ARE SHOWN ON THE SAME SIDE OF THE SECTION LINE WHERE THE WELL IS LOCATED.
- THIS MAP DOES NOT REPRESENT A MONUMENTED BOUNDARY SURVEY. SIXTEENTH CORNER LOCATIONS ARE COMPUTED, UNLESS OTHERWISE NOTED.
- BOTTOM HOLE LOCATIONS AND HORIZONTAL COMPLETION ZONE PROVIDED BY OTHERS.
- ALL REBAR AND CAPS ARE MEASURED IN INCHES.



0 1000
SCALE: 1"= 1000'
U.S. SURVEY FEET



LAMP RYNEARSON
& ASSOCIATES

4715 Innovation Drive 970.226.0342 | P
Fort Collins, CO 80525 970.226.0879 | F
www.LRA-inc.com

PROPOSED WELL LOCATION EXHIBIT
JAMASO 4-65 5-6-11
2 OF 3

DRAWN BY
CPP

DATE
03/30

COGCC ID

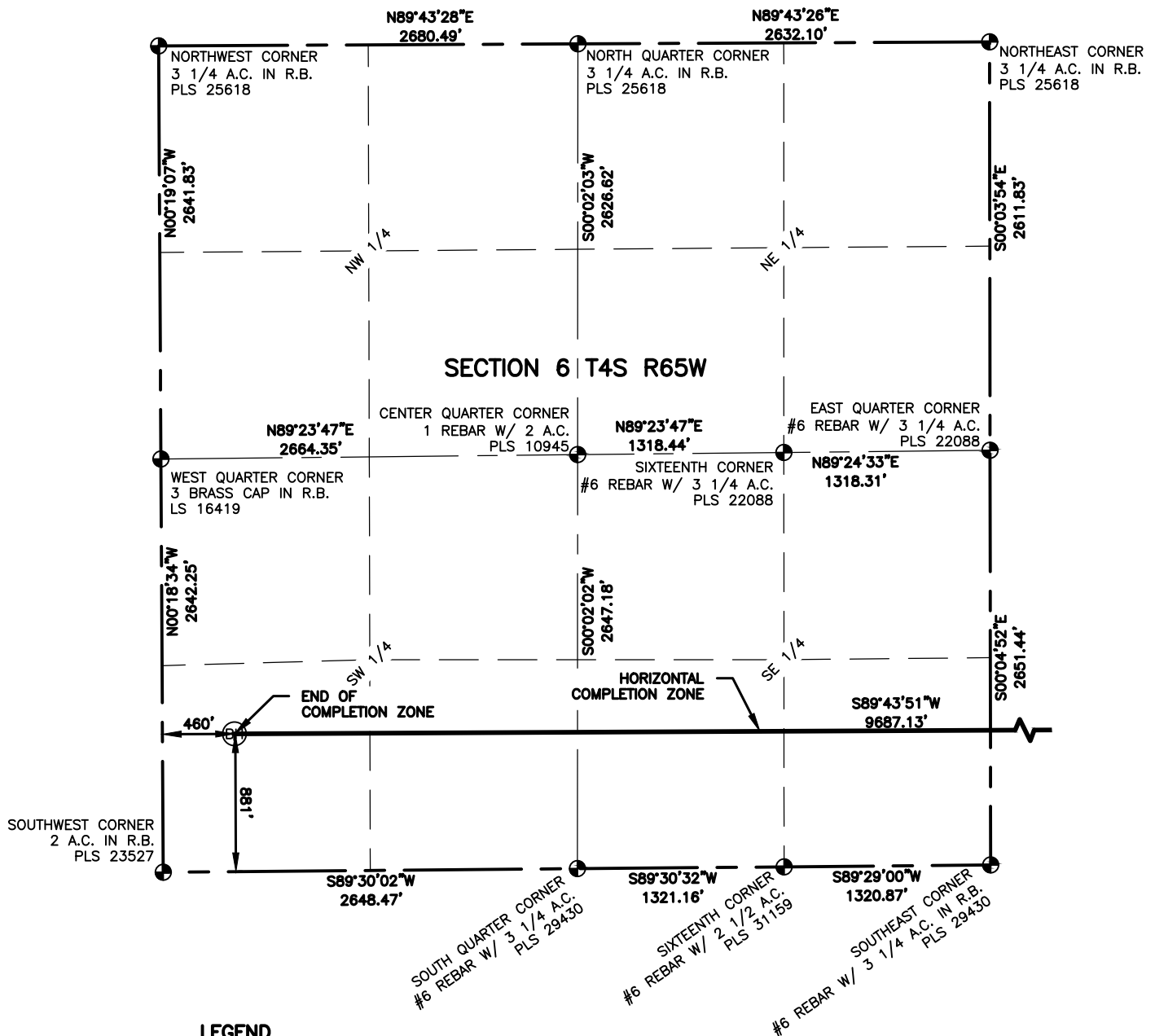
PROJECT - TASK NUMBER
0218003.03

BOOK AND PAGE

SURFACE - LOCATION

NW/4 SW/4 SEC 4 T4S R65W,
CITY OF AURORA

PATH\FILENAME L:\Engineering\0218003.03 XOG - Jamaso\SURVEY\DRAWINGS\EXHIBITS\0218003.03 WP-K2.dwg

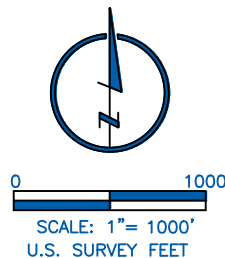


LEGEND

- ALIQUOT CORNER
- ⊙ PROPOSED WELL
- ◆ COMPUTED ALIQUOT CORNER
- A.C. ALUMINUM CAP
- ⊖ BOTTOM HOLE
- R.B. RANGE BOX

NOTES:

1. DISTANCES ARE MEASURED PERPENDICULAR TO NEAREST SECTION LINE AND ARE SHOWN ON THE SAME SIDE OF THE SECTION LINE WHERE THE WELL IS LOCATED.
2. THIS MAP DOES NOT REPRESENT A MONUMENTED BOUNDARY SURVEY. SIXTEENTH CORNER LOCATIONS ARE COMPUTED, UNLESS OTHERWISE NOTED.
3. BOTTOM HOLE LOCATIONS AND HORIZONTAL COMPLETION ZONE PROVIDED BY OTHERS.
4. ALL REBAR AND CAPS ARE MEASURED IN INCHES.



LAMP RYNEARSON
& ASSOCIATES

4715 Innovation Drive 970.226.0342 | P
Fort Collins, CO 80525 970.226.0879 | F
www.LRA-inc.com

PROPOSED WELL LOCATION EXHIBIT
JAMASO 4-65 5-6-11
3 OF 3

DRAWN BY
CPP

DATE
03/30

COGCC ID

PROJECT - TASK NUMBER
0218003.03

BOOK AND PAGE

SURFACE - LOCATION

PATH\FILENAME L:\Engineering\0218003.03 XOG - Jamaso\SURVEY\DRAWINGS\EXHIBITS\0218003.03 WP-K3.dwg

NW/4 SW/4 SEC 4 T4S R65W,
CITY OF AURORA