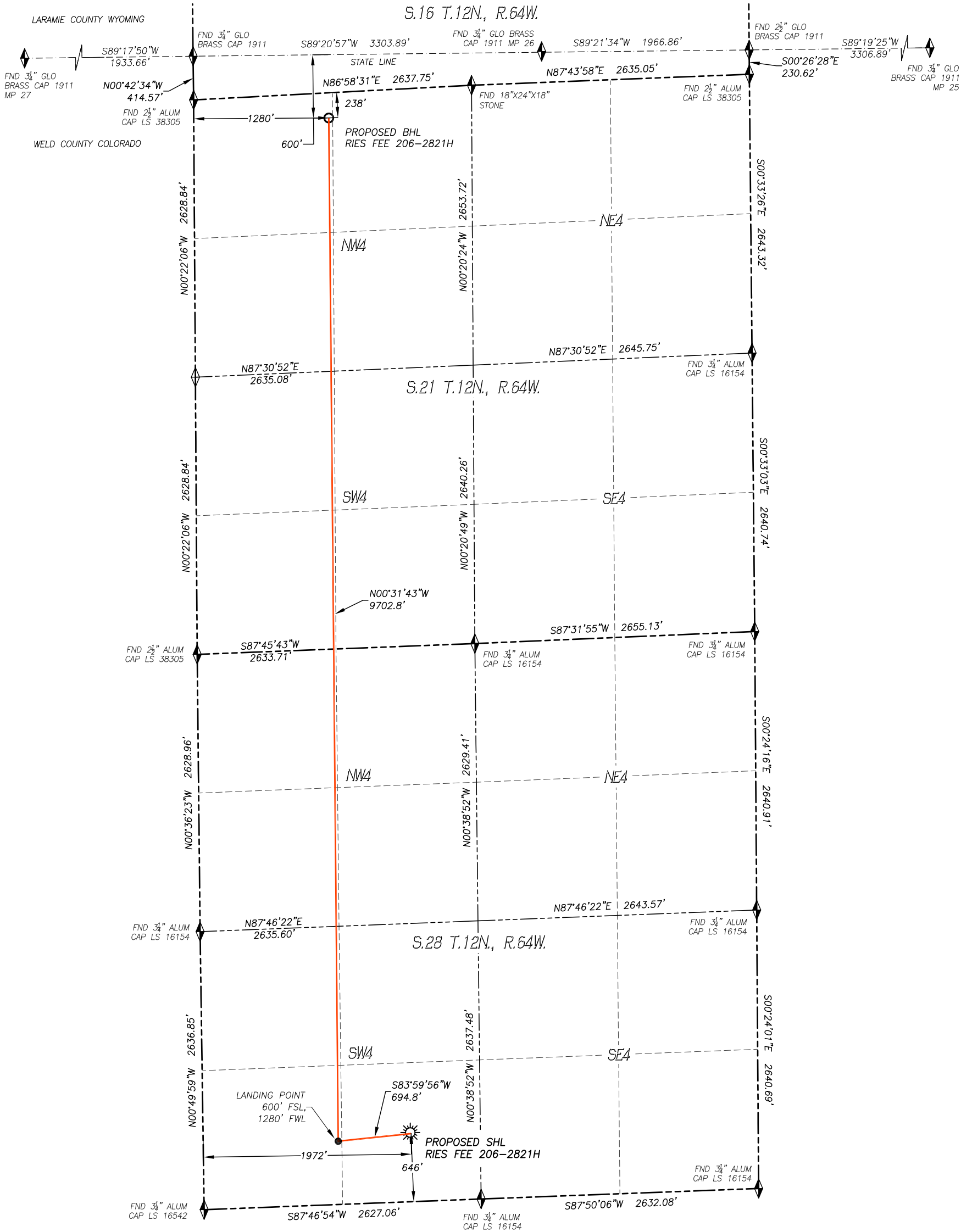


WELL LOCATION CERTIFICATE
RIES FEE 206-2821H

SECTION 28, TOWNSHIP 12 NORTH, RANGE 64 WEST OF THE 6TH P.M.

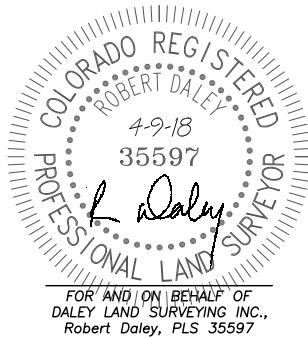


IN ACCORDANCE WITH A REQUEST FROM CLEAR CREEK RESOURCE PARTNERS, DALEY LAND SURVEYING, INC. HAS DETERMINED THE SURFACE LOCATION OF THE RIES FEE 206-2821H WELL TO BE 646' FSL, 1972' FWL, AS MEASURED AT NINETY (90) DEGREES FROM THE SECTION LINES OF SECTION 28, TOWNSHIP 12 NORTH, RANGE 64 WEST, AND THE BOTTOM HOLE LOCATION TO BE 238' FNL, 1280' FWL, AS MEASURED AT NINETY (90) DEGREES FROM THE SECTION LINES OF SECTION 21, TOWNSHIP 12 NORTH, RANGE 64 WEST, OF THE 6TH PRINCIPAL MERIDIAN, WELD COUNTY, COLORADO.

I HEREBY STATE THAT THIS WELL LOCATION CERTIFICATE WAS PREPARED BY ME OR UNDER MY DIRECT SUPERVISION, THAT THE WORK WAS COMPLETED ON 03/27/2018 FOR AND ON BEHALF OF CLEAR CREEK RESOURCE PARTNERS, AND THAT THIS MAP DOES NOT REPRESENT A BOUNDARY SURVEY, IT IS NOT A LAND SURVEY PLAT OR AN IMPROVEMENT SURVEY PLAT AND IT IS NOT TO BE RELIED UPON FOR THE ESTABLISHMENT OF FENCE, BUILDING OR OTHER FUTURE IMPROVEMENT LINES.

NOTES:

- BEARINGS FOR THIS MAP ARE ASSUMED AND BASED UPON GPS OBSERVATIONS MADE BETWEEN MONUMENTS LOCATED AT THE SOUTHEAST CORNER AND THE SOUTH QUARTER CORNER OF SECTION 28, T.12N., R.64W.
- HORIZONTAL DATUM IS NAD83.
- VERTICAL DATUM IS NAVD88 AND ORIGINATES FROM THE LOCAL C.O.R.S. NETWORK, UTILIZING THE GEOID12A MODEL.
- SEE LOCATION DRAWING FOR VISIBLE IMPROVEMENTS WITHIN 500' OF PROPOSED DISTURBED AREA.
- SURFACE USE: PASTURE/RANGELAND.
- INST. OPERATOR: KYLE DALEY.



NEAREST CULTURAL ITEMS:

BUILDING: 5048'± SE
BUILDING UNIT: 5280'±
HIGH OCC. BLD. UNIT: 5280'±
DES. OUTSIDE ACTIVITY AREA: 5280'±
PUBLIC ROAD: 5280'±
ABOVE GROUND UTILITY: 3284'± E
RAILROAD: 5280'±
PROPERTY LINE: 646'± S

NAD 83 LATITUDE AND LONGITUDE

SURFACE LOCATION:

LATITUDE: N40.97354°
LONGITUDE: W104.55477°
ELEV.: 5593'
PDOP.: 1.3
QTR/QTR: SE4/SW4

LANDING POINT:

LATITUDE: N40.97336°
LONGITUDE: W104.55728°
BOTTOM HOLE:
LATITUDE: N40.99999°
LONGITUDE: W104.55723°

LEGEND

- FOUND MONUMENT AS DESCRIBED
CALCULATED POSITION
PROPOSED WELL
EXISTING WELL
BOTTOM HOLE

