



Well: Ries Fee 202-2821H  
Site: Section 28-T12N-R64W  
Project: Weld County, Colorado  
Design: plan1

#### DESIGN TARGET DETAILS

Name	TVD	+N/-S	+E/-W	Northing	Easting	Latitude	Longitude
Ries Fee 202-2821H PBHL 600 FNL 1280 FEL	7903.00	9922.47	721.08	1608566.45	3262950.72	40.99999227	-104.54741782
Ries Fee 202-2821H EP 600 FSL 1280 FEL	7907.00	295.34	699.02	1598939.66	3263031.79	40.97357052	-104.54749875

#### SECTION DETAILS

Sec	MD	Inc	Azi	TVD	+N/-S	+E/-W	Dleg	TFace	Vsect	Annotation
1	0.00	0.00	0.00	0.00	0.00	0.00	0.00	0.00	0.00	
2	2500.00	0.00	0.00	2500.00	0.00	0.00	0.00	0.00	0.00	KOP Begin 2°/100' build
3	2918.41	8.37	114.16	2916.92	-12.48	27.83	2.00	114.16	-10.43	Begin 8.37° tangent
4	7354.22	8.37	114.16	7305.50	-276.66	616.86	0.00	0.00	-231.22	Begin 10°/100' build/turn
5	6288.42	90.02	0.13	7907.00	295.34	699.02	10.00	-113.79	345.23	Begin 90.02° lateral
6	17915.57	90.02	0.13	7903.00	9922.47	721.08	0.00	0.00	9948.64	PBHL/TD 17915.57 MD/7903.00 TVD

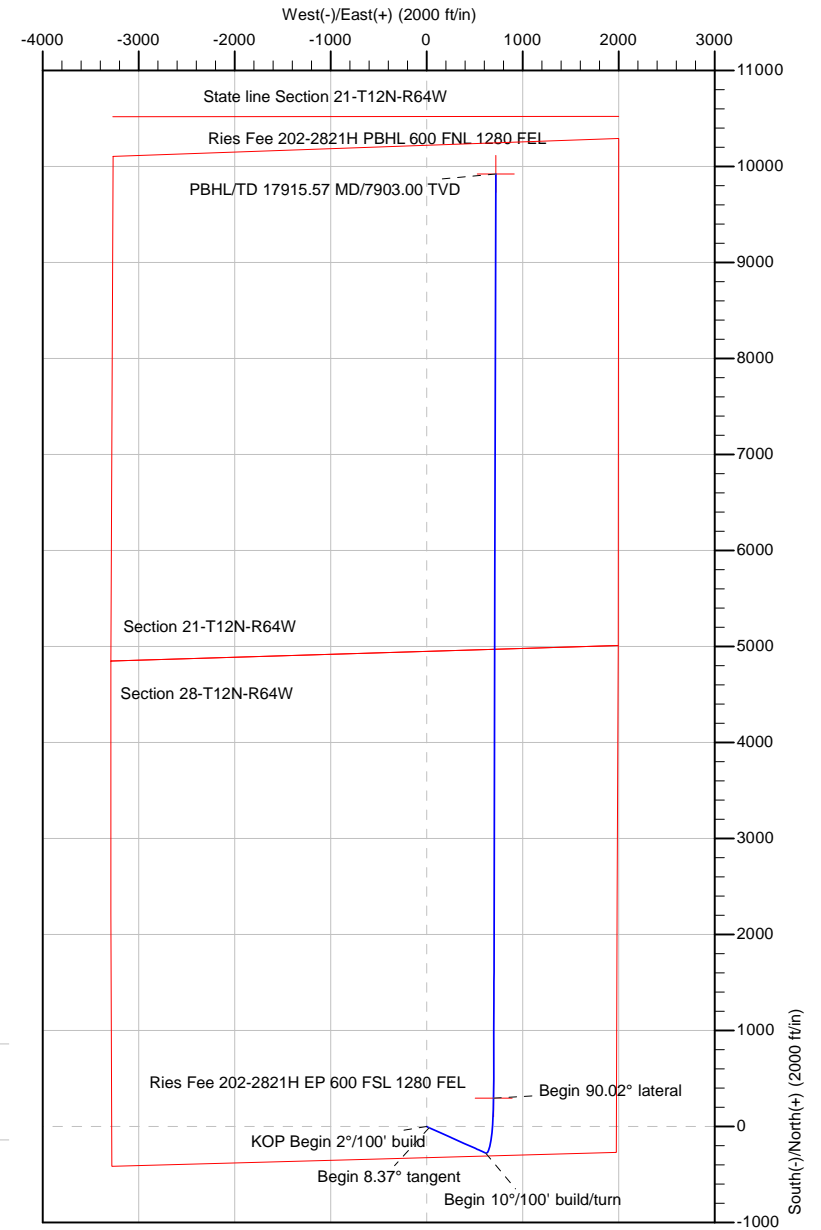
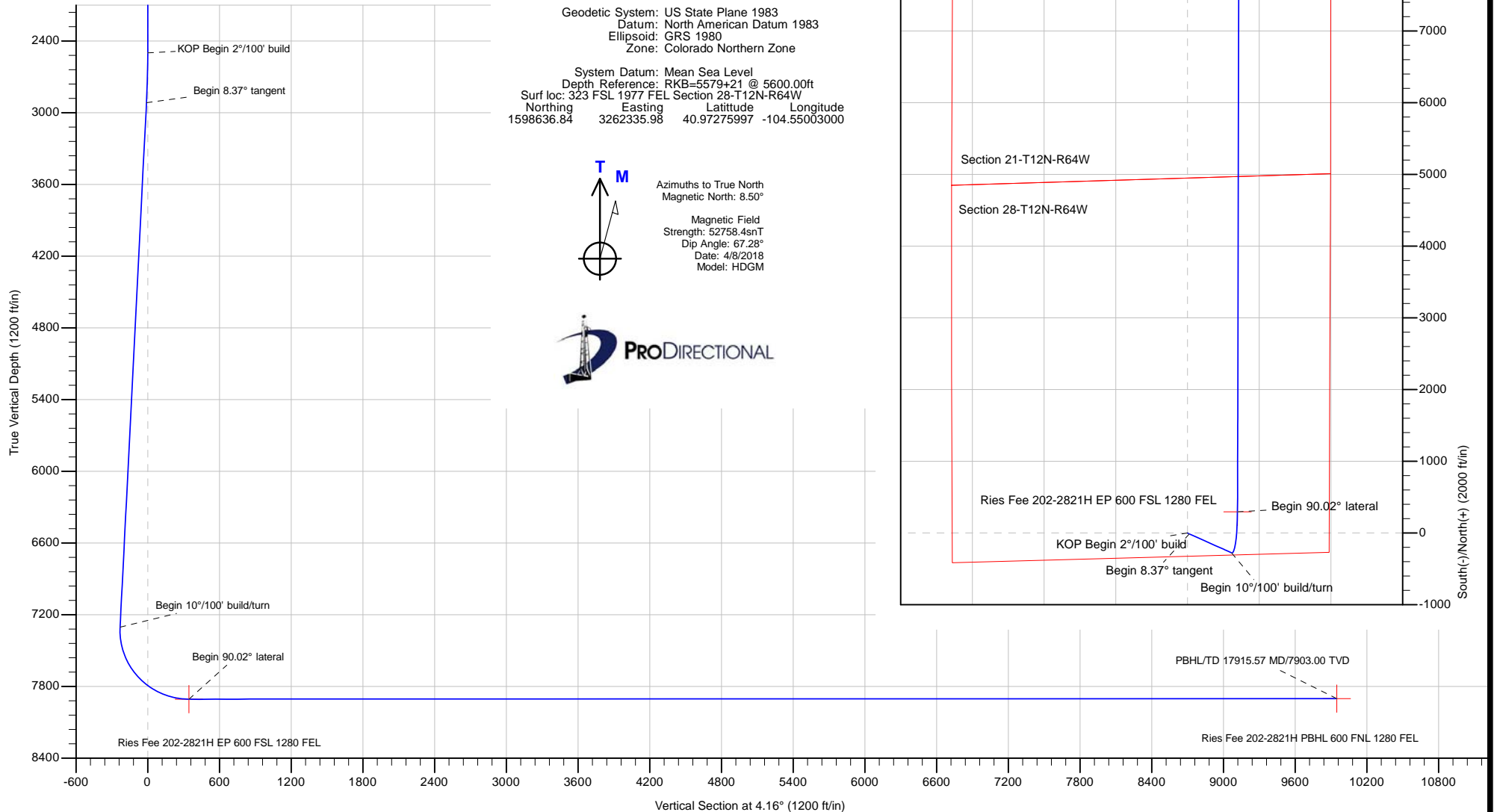
Geodetic System: US State Plane 1983  
Datum: North American Datum 1983  
Ellipsoid: GRS 1980  
Zone: Colorado Northern Zone

System Datum: Mean Sea Level  
Depth Reference: RKB=5579+21 @ 5600.00ft  
Surf loc: 323 FSL 1977 FEL Section 28-T12N-R64W  
Northing Easting Latitude Longitude  
1598636.84 3262335.98 40.97275997 -104.55003000



Azimuths to True North  
Magnetic North: 8.50°

Magnetic Field  
Strength: 52758.4snT  
Dip Angle: 67.28°  
Date: 4/8/2018  
Model: HDGM



<b>Database:</b>	DB_Jul2216dt_v14	<b>Local Co-ordinate Reference:</b>	Well Ries Fee 202-2821H
<b>Company:</b>	Clear Creek Resources Partners	<b>TVD Reference:</b>	RKB=5579+21 @ 5600.00ft
<b>Project:</b>	Weld County, Colorado	<b>MD Reference:</b>	RKB=5579+21 @ 5600.00ft
<b>Site:</b>	Section 28-T12N-R64W	<b>North Reference:</b>	True
<b>Well:</b>	Ries Fee 202-2821H	<b>Survey Calculation Method:</b>	Minimum Curvature
<b>Wellbore:</b>	Original Hole		
<b>Design:</b>	plan1		

<b>Project</b>	Weld County, Colorado		
<b>Map System:</b>	US State Plane 1983	<b>System Datum:</b>	Mean Sea Level
<b>Geo Datum:</b>	North American Datum 1983		
<b>Map Zone:</b>	Colorado Northern Zone		

Site		Section 28-T12N-R64W			
Site Position:		Northing:	1,600,935.50 usft	Latitude:	40.97908764
From:	Map	Easting:	3,261,678.61 usft	Longitude:	-104.55232132
Position Uncertainty:	0.00 ft	Slot Radius:	13-3/16 "	Grid Convergence:	0.61 °

Well	Ries Fee 202-2821H, Surf loc: 323 FSL 1977 FEL Section 28-T12N-R64W					
Well Position	+N/-S	-2,305.55 ft	Northing:	1,598,636.84 usft	Latitude:	40.97275997
	+E/-W	632.77 ft	Easting:	3,262,335.98 usft	Longitude:	-104.55003000
Position Uncertainty		0.00 ft	Wellhead Elevation:		Ground Level:	5,579.00 ft

<b>Wellbore</b>	Original Hole				
<b>Magnetics</b>	<b>Model Name</b>	<b>Sample Date</b>	<b>Declination (°)</b>	<b>Dip Angle (°)</b>	<b>Field Strength (nT)</b>
	HDGM	4/8/2018	8.50	67.28	52,758.40000000

<b>Design</b>	plan1			
<b>Audit Notes:</b>				
<b>Version:</b>	<b>Phase:</b>	PLAN	<b>Tie On Depth:</b>	0.00
<b>Vertical Section:</b>	<b>Depth From (TVD) (ft)</b>	<b>+N/-S (ft)</b>	<b>+E/-W (ft)</b>	<b>Direction (°)</b>
	0.00	0.00	0.00	4.16

<b>Plan Survey Tool Program</b>	<b>Date</b>	4/8/2018		
<b>Depth From (ft)</b>	<b>Depth To (ft)</b>	<b>Survey (Wellbore)</b>	<b>Tool Name</b>	<b>Remarks</b>
1	0.00	17,915.51 plan1 (Original Hole)	MWD	
			OWSG MWD - Standard	

<b>Plan Sections</b>										
<b>Measured Depth (ft)</b>	<b>Inclination (°)</b>	<b>Azimuth (°)</b>	<b>Vertical Depth (ft)</b>	<b>+N/-S (ft)</b>	<b>+E/-W (ft)</b>	<b>Dogleg Rate (°/100ft)</b>	<b>Build Rate (°/100ft)</b>	<b>Turn Rate (°/100ft)</b>	<b>TFO (°)</b>	<b>Target</b>
0.00	0.00	0.00	0.00	0.00	0.00	0.00	0.00	0.00	0.00	
2,500.00	0.00	0.00	2,500.00	0.00	0.00	0.00	0.00	0.00	0.00	
2,918.41	8.37	114.16	2,916.92	-12.48	27.83	2.00	2.00	0.00	114.16	
7,354.22	8.37	114.16	7,305.50	-276.66	616.86	0.00	0.00	0.00	0.00	
8,288.42	90.02	0.13	7,907.00	295.34	699.02	10.00	8.74	-12.21	-113.79	Ries Fee 202-2821H
17,915.57	90.02	0.13	7,903.00	9,922.47	721.08	0.00	0.00	0.00	0.00	Ries Fee 202-2821H

<b>Database:</b>	DB_Jul2216dt_v14	<b>Local Co-ordinate Reference:</b>	Well Ries Fee 202-2821H
<b>Company:</b>	Clear Creek Resources Partners	<b>TVD Reference:</b>	RKB=5579+21 @ 5600.00ft
<b>Project:</b>	Weld County, Colorado	<b>MD Reference:</b>	RKB=5579+21 @ 5600.00ft
<b>Site:</b>	Section 28-T12N-R64W	<b>North Reference:</b>	True
<b>Well:</b>	Ries Fee 202-2821H	<b>Survey Calculation Method:</b>	Minimum Curvature
<b>Wellbore:</b>	Original Hole		
<b>Design:</b>	plan1		

Planned Survey									
Measured Depth (ft)	Inclination (°)	Azimuth (°)	Vertical Depth (ft)	+N/-S (ft)	+E/-W (ft)	Vertical Section (ft)	Dogleg Rate (°/100ft)	Build Rate (°/100ft)	Turn Rate (°/100ft)
0.00	0.00	0.00	0.00	0.00	0.00	0.00	0.00	0.00	0.00
100.00	0.00	0.00	100.00	0.00	0.00	0.00	0.00	0.00	0.00
200.00	0.00	0.00	200.00	0.00	0.00	0.00	0.00	0.00	0.00
300.00	0.00	0.00	300.00	0.00	0.00	0.00	0.00	0.00	0.00
400.00	0.00	0.00	400.00	0.00	0.00	0.00	0.00	0.00	0.00
500.00	0.00	0.00	500.00	0.00	0.00	0.00	0.00	0.00	0.00
600.00	0.00	0.00	600.00	0.00	0.00	0.00	0.00	0.00	0.00
700.00	0.00	0.00	700.00	0.00	0.00	0.00	0.00	0.00	0.00
800.00	0.00	0.00	800.00	0.00	0.00	0.00	0.00	0.00	0.00
900.00	0.00	0.00	900.00	0.00	0.00	0.00	0.00	0.00	0.00
1,000.00	0.00	0.00	1,000.00	0.00	0.00	0.00	0.00	0.00	0.00
1,100.00	0.00	0.00	1,100.00	0.00	0.00	0.00	0.00	0.00	0.00
1,200.00	0.00	0.00	1,200.00	0.00	0.00	0.00	0.00	0.00	0.00
1,300.00	0.00	0.00	1,300.00	0.00	0.00	0.00	0.00	0.00	0.00
1,400.00	0.00	0.00	1,400.00	0.00	0.00	0.00	0.00	0.00	0.00
1,500.00	0.00	0.00	1,500.00	0.00	0.00	0.00	0.00	0.00	0.00
1,600.00	0.00	0.00	1,600.00	0.00	0.00	0.00	0.00	0.00	0.00
1,700.00	0.00	0.00	1,700.00	0.00	0.00	0.00	0.00	0.00	0.00
1,800.00	0.00	0.00	1,800.00	0.00	0.00	0.00	0.00	0.00	0.00
1,900.00	0.00	0.00	1,900.00	0.00	0.00	0.00	0.00	0.00	0.00
2,000.00	0.00	0.00	2,000.00	0.00	0.00	0.00	0.00	0.00	0.00
2,100.00	0.00	0.00	2,100.00	0.00	0.00	0.00	0.00	0.00	0.00
2,200.00	0.00	0.00	2,200.00	0.00	0.00	0.00	0.00	0.00	0.00
2,300.00	0.00	0.00	2,300.00	0.00	0.00	0.00	0.00	0.00	0.00
2,400.00	0.00	0.00	2,400.00	0.00	0.00	0.00	0.00	0.00	0.00
2,500.00	0.00	0.00	2,500.00	0.00	0.00	0.00	0.00	0.00	0.00
<b>KOP Begin 2°/100' build</b>									
2,600.00	2.00	114.16	2,599.98	-0.71	1.59	-0.60	2.00	2.00	0.00
2,700.00	4.00	114.16	2,699.84	-2.86	6.37	-2.39	2.00	2.00	0.00
2,800.00	6.00	114.16	2,799.45	-6.42	14.32	-5.37	2.00	2.00	0.00
2,900.00	8.00	114.16	2,898.70	-11.41	25.44	-9.54	2.00	2.00	0.00
2,918.41	8.37	114.16	2,916.92	-12.48	27.83	-10.43	2.00	2.00	0.00
<b>Begin 8.37° tangent</b>									
3,000.00	8.37	114.16	2,997.65	-17.34	38.66	-14.49	0.00	0.00	0.00
3,100.00	8.37	114.16	3,096.58	-23.30	51.94	-19.47	0.00	0.00	0.00
3,200.00	8.37	114.16	3,195.52	-29.25	65.22	-24.45	0.00	0.00	0.00
3,300.00	8.37	114.16	3,294.45	-35.21	78.50	-29.42	0.00	0.00	0.00
3,400.00	8.37	114.16	3,393.39	-41.16	91.78	-34.40	0.00	0.00	0.00
3,500.00	8.37	114.16	3,492.32	-47.12	105.06	-39.38	0.00	0.00	0.00
3,600.00	8.37	114.16	3,591.26	-53.07	118.34	-44.36	0.00	0.00	0.00
3,700.00	8.37	114.16	3,690.19	-59.03	131.62	-49.33	0.00	0.00	0.00
3,800.00	8.37	114.16	3,789.13	-64.98	144.90	-54.31	0.00	0.00	0.00
3,900.00	8.37	114.16	3,888.06	-70.94	158.17	-59.29	0.00	0.00	0.00
4,000.00	8.37	114.16	3,987.00	-76.90	171.45	-64.27	0.00	0.00	0.00
4,100.00	8.37	114.16	4,085.93	-82.85	184.73	-69.24	0.00	0.00	0.00
4,200.00	8.37	114.16	4,184.87	-88.81	198.01	-74.22	0.00	0.00	0.00
4,300.00	8.37	114.16	4,283.80	-94.76	211.29	-79.20	0.00	0.00	0.00
4,400.00	8.37	114.16	4,382.74	-100.72	224.57	-84.18	0.00	0.00	0.00
4,500.00	8.37	114.16	4,481.68	-106.67	237.85	-89.15	0.00	0.00	0.00
4,600.00	8.37	114.16	4,580.61	-112.63	251.13	-94.13	0.00	0.00	0.00
4,700.00	8.37	114.16	4,679.55	-118.58	264.41	-99.11	0.00	0.00	0.00
4,800.00	8.37	114.16	4,778.48	-124.54	277.68	-104.09	0.00	0.00	0.00
4,900.00	8.37	114.16	4,877.42	-130.50	290.96	-109.06	0.00	0.00	0.00

<b>Database:</b>	DB_Jul2216dt_v14	<b>Local Co-ordinate Reference:</b>	Well Ries Fee 202-2821H
<b>Company:</b>	Clear Creek Resources Partners	<b>TVD Reference:</b>	RKB=5579+21 @ 5600.00ft
<b>Project:</b>	Weld County, Colorado	<b>MD Reference:</b>	RKB=5579+21 @ 5600.00ft
<b>Site:</b>	Section 28-T12N-R64W	<b>North Reference:</b>	True
<b>Well:</b>	Ries Fee 202-2821H	<b>Survey Calculation Method:</b>	Minimum Curvature
<b>Wellbore:</b>	Original Hole		
<b>Design:</b>	plan1		

Planned Survey									
Measured Depth (ft)	Inclination (°)	Azimuth (°)	Vertical Depth (ft)	+N/-S (ft)	+E/-W (ft)	Vertical Section (ft)	Dogleg Rate (°/100ft)	Build Rate (°/100ft)	Turn Rate (°/100ft)
5,000.00	8.37	114.16	4,976.35	-136.45	304.24	-114.04	0.00	0.00	0.00
5,100.00	8.37	114.16	5,075.29	-142.41	317.52	-119.02	0.00	0.00	0.00
5,200.00	8.37	114.16	5,174.22	-148.36	330.80	-123.99	0.00	0.00	0.00
5,300.00	8.37	114.16	5,273.16	-154.32	344.08	-128.97	0.00	0.00	0.00
5,400.00	8.37	114.16	5,372.09	-160.27	357.36	-133.95	0.00	0.00	0.00
5,500.00	8.37	114.16	5,471.03	-166.23	370.64	-138.93	0.00	0.00	0.00
5,600.00	8.37	114.16	5,569.96	-172.18	383.92	-143.90	0.00	0.00	0.00
5,700.00	8.37	114.16	5,668.90	-178.14	397.20	-148.88	0.00	0.00	0.00
5,800.00	8.37	114.16	5,767.84	-184.09	410.47	-153.86	0.00	0.00	0.00
5,900.00	8.37	114.16	5,866.77	-190.05	423.75	-158.84	0.00	0.00	0.00
6,000.00	8.37	114.16	5,965.71	-196.01	437.03	-163.81	0.00	0.00	0.00
6,100.00	8.37	114.16	6,064.64	-201.96	450.31	-168.79	0.00	0.00	0.00
6,200.00	8.37	114.16	6,163.58	-207.92	463.59	-173.77	0.00	0.00	0.00
6,300.00	8.37	114.16	6,262.51	-213.87	476.87	-178.75	0.00	0.00	0.00
6,400.00	8.37	114.16	6,361.45	-219.83	490.15	-183.72	0.00	0.00	0.00
6,500.00	8.37	114.16	6,460.38	-225.78	503.43	-188.70	0.00	0.00	0.00
6,600.00	8.37	114.16	6,559.32	-231.74	516.71	-193.68	0.00	0.00	0.00
6,700.00	8.37	114.16	6,658.25	-237.69	529.98	-198.66	0.00	0.00	0.00
6,800.00	8.37	114.16	6,757.19	-243.65	543.26	-203.63	0.00	0.00	0.00
6,900.00	8.37	114.16	6,856.12	-249.61	556.54	-208.61	0.00	0.00	0.00
7,000.00	8.37	114.16	6,955.06	-255.56	569.82	-213.59	0.00	0.00	0.00
7,100.00	8.37	114.16	7,053.99	-261.52	583.10	-218.57	0.00	0.00	0.00
7,200.00	8.37	114.16	7,152.93	-267.47	596.38	-223.54	0.00	0.00	0.00
7,300.00	8.37	114.16	7,251.87	-273.43	609.66	-228.52	0.00	0.00	0.00
7,354.22	8.37	114.16	7,305.51	-276.66	616.86	-231.22	0.00	0.00	0.00
Begin 10°/100' build/turn									
7,400.00	7.74	81.33	7,350.86	-277.55	622.95	-231.67	10.00	-1.37	-71.71
7,500.00	13.52	34.10	7,449.27	-266.83	636.20	-220.02	10.00	5.78	-47.23
7,600.00	22.46	19.10	7,544.33	-239.03	649.03	-191.36	10.00	8.94	-15.00
7,700.00	32.02	12.54	7,633.16	-194.99	661.07	-146.56	10.00	9.55	-6.56
7,800.00	41.76	8.79	7,713.05	-136.05	671.95	-86.99	10.00	9.75	-3.75
7,900.00	51.59	6.25	7,781.58	-64.01	681.32	-14.46	10.00	9.83	-2.54
8,000.00	61.46	4.32	7,836.67	18.95	688.92	68.83	10.00	9.87	-1.92
8,100.00	71.36	2.73	7,876.65	110.30	694.50	160.35	10.00	9.89	-1.59
8,200.00	81.26	1.32	7,900.29	207.28	697.91	257.31	10.00	9.91	-1.41
8,288.42	90.02	0.13	7,907.00	295.34	699.02	345.23	10.00	9.91	-1.34
Begin 90.02° lateral									
8,300.00	90.02	0.13	7,907.00	306.92	699.04	356.78	0.00	0.00	0.00
8,400.00	90.02	0.13	7,906.95	406.92	699.27	456.54	0.00	0.00	0.00
8,500.00	90.02	0.13	7,906.91	506.92	699.50	556.29	0.00	0.00	0.00
8,600.00	90.02	0.13	7,906.87	606.92	699.73	656.04	0.00	0.00	0.00
8,700.00	90.02	0.13	7,906.83	706.92	699.96	755.80	0.00	0.00	0.00
8,800.00	90.02	0.13	7,906.79	806.92	700.19	855.55	0.00	0.00	0.00
8,900.00	90.02	0.13	7,906.75	906.92	700.42	955.30	0.00	0.00	0.00
9,000.00	90.02	0.13	7,906.70	1,006.92	700.65	1,055.06	0.00	0.00	0.00
9,100.00	90.02	0.13	7,906.66	1,106.92	700.88	1,154.81	0.00	0.00	0.00
9,200.00	90.02	0.13	7,906.62	1,206.92	701.11	1,254.56	0.00	0.00	0.00
9,300.00	90.02	0.13	7,906.58	1,306.92	701.34	1,354.32	0.00	0.00	0.00
9,400.00	90.02	0.13	7,906.54	1,406.92	701.56	1,454.07	0.00	0.00	0.00
9,500.00	90.02	0.13	7,906.50	1,506.92	701.79	1,553.82	0.00	0.00	0.00
9,600.00	90.02	0.13	7,906.46	1,606.92	702.02	1,653.58	0.00	0.00	0.00
9,700.00	90.02	0.13	7,906.41	1,706.92	702.25	1,753.33	0.00	0.00	0.00
9,800.00	90.02	0.13	7,906.37	1,806.92	702.48	1,853.08	0.00	0.00	0.00
9,900.00	90.02	0.13	7,906.33	1,906.92	702.71	1,952.84	0.00	0.00	0.00

<b>Database:</b>	DB_Jul2216dt_v14	<b>Local Co-ordinate Reference:</b>	Well Ries Fee 202-2821H
<b>Company:</b>	Clear Creek Resources Partners	<b>TVD Reference:</b>	RKB=5579+21 @ 5600.00ft
<b>Project:</b>	Weld County, Colorado	<b>MD Reference:</b>	RKB=5579+21 @ 5600.00ft
<b>Site:</b>	Section 28-T12N-R64W	<b>North Reference:</b>	True
<b>Well:</b>	Ries Fee 202-2821H	<b>Survey Calculation Method:</b>	Minimum Curvature
<b>Wellbore:</b>	Original Hole		
<b>Design:</b>	plan1		

Planned Survey									
Measured Depth (ft)	Inclination (°)	Azimuth (°)	Vertical Depth (ft)	+N/-S (ft)	+E/-W (ft)	Vertical Section (ft)	Dogleg Rate (°/100ft)	Build Rate (°/100ft)	Turn Rate (°/100ft)
10,000.00	90.02	0.13	7,906.29	2,006.92	702.94	2,052.59	0.00	0.00	0.00
10,100.00	90.02	0.13	7,906.25	2,106.92	703.17	2,152.34	0.00	0.00	0.00
10,200.00	90.02	0.13	7,906.21	2,206.92	703.40	2,252.10	0.00	0.00	0.00
10,300.00	90.02	0.13	7,906.16	2,306.92	703.63	2,351.85	0.00	0.00	0.00
10,400.00	90.02	0.13	7,906.12	2,406.92	703.86	2,451.60	0.00	0.00	0.00
10,500.00	90.02	0.13	7,906.08	2,506.92	704.09	2,551.36	0.00	0.00	0.00
10,600.00	90.02	0.13	7,906.04	2,606.92	704.31	2,651.11	0.00	0.00	0.00
10,700.00	90.02	0.13	7,906.00	2,706.92	704.54	2,750.86	0.00	0.00	0.00
10,800.00	90.02	0.13	7,905.96	2,806.92	704.77	2,850.62	0.00	0.00	0.00
10,900.00	90.02	0.13	7,905.92	2,906.92	705.00	2,950.37	0.00	0.00	0.00
11,000.00	90.02	0.13	7,905.87	3,006.92	705.23	3,050.12	0.00	0.00	0.00
11,100.00	90.02	0.13	7,905.83	3,106.92	705.46	3,149.88	0.00	0.00	0.00
11,200.00	90.02	0.13	7,905.79	3,206.92	705.69	3,249.63	0.00	0.00	0.00
11,300.00	90.02	0.13	7,905.75	3,306.92	705.92	3,349.38	0.00	0.00	0.00
11,400.00	90.02	0.13	7,905.71	3,406.92	706.15	3,449.14	0.00	0.00	0.00
11,500.00	90.02	0.13	7,905.67	3,506.92	706.38	3,548.89	0.00	0.00	0.00
11,600.00	90.02	0.13	7,905.62	3,606.92	706.61	3,648.64	0.00	0.00	0.00
11,700.00	90.02	0.13	7,905.58	3,706.92	706.84	3,748.40	0.00	0.00	0.00
11,800.00	90.02	0.13	7,905.54	3,806.92	707.06	3,848.15	0.00	0.00	0.00
11,900.00	90.02	0.13	7,905.50	3,906.92	707.29	3,947.90	0.00	0.00	0.00
12,000.00	90.02	0.13	7,905.46	4,006.91	707.52	4,047.66	0.00	0.00	0.00
12,100.00	90.02	0.13	7,905.42	4,106.91	707.75	4,147.41	0.00	0.00	0.00
12,200.00	90.02	0.13	7,905.37	4,206.91	707.98	4,247.16	0.00	0.00	0.00
12,300.00	90.02	0.13	7,905.33	4,306.91	708.21	4,346.92	0.00	0.00	0.00
12,400.00	90.02	0.13	7,905.29	4,406.91	708.44	4,446.67	0.00	0.00	0.00
12,500.00	90.02	0.13	7,905.25	4,506.91	708.67	4,546.42	0.00	0.00	0.00
12,600.00	90.02	0.13	7,905.21	4,606.91	708.90	4,646.18	0.00	0.00	0.00
12,700.00	90.02	0.13	7,905.17	4,706.91	709.13	4,745.93	0.00	0.00	0.00
12,800.00	90.02	0.13	7,905.13	4,806.91	709.36	4,845.68	0.00	0.00	0.00
12,900.00	90.02	0.13	7,905.08	4,906.91	709.59	4,945.44	0.00	0.00	0.00
13,000.00	90.02	0.13	7,905.04	5,006.91	709.82	5,045.19	0.00	0.00	0.00
13,100.00	90.02	0.13	7,905.00	5,106.91	710.04	5,144.94	0.00	0.00	0.00
13,200.00	90.02	0.13	7,904.96	5,206.91	710.27	5,244.70	0.00	0.00	0.00
13,300.00	90.02	0.13	7,904.92	5,306.91	710.50	5,344.45	0.00	0.00	0.00
13,400.00	90.02	0.13	7,904.88	5,406.91	710.73	5,444.20	0.00	0.00	0.00
13,500.00	90.02	0.13	7,904.83	5,506.91	710.96	5,543.96	0.00	0.00	0.00
13,600.00	90.02	0.13	7,904.79	5,606.91	711.19	5,643.71	0.00	0.00	0.00
13,700.00	90.02	0.13	7,904.75	5,706.91	711.42	5,743.46	0.00	0.00	0.00
13,800.00	90.02	0.13	7,904.71	5,806.91	711.65	5,843.22	0.00	0.00	0.00
13,900.00	90.02	0.13	7,904.67	5,906.91	711.88	5,942.97	0.00	0.00	0.00
14,000.00	90.02	0.13	7,904.63	6,006.91	712.11	6,042.72	0.00	0.00	0.00
14,100.00	90.02	0.13	7,904.59	6,106.91	712.34	6,142.48	0.00	0.00	0.00
14,200.00	90.02	0.13	7,904.54	6,206.91	712.57	6,242.23	0.00	0.00	0.00
14,300.00	90.02	0.13	7,904.50	6,306.91	712.79	6,341.98	0.00	0.00	0.00
14,400.00	90.02	0.13	7,904.46	6,406.91	713.02	6,441.74	0.00	0.00	0.00
14,500.00	90.02	0.13	7,904.42	6,506.91	713.25	6,541.49	0.00	0.00	0.00
14,600.00	90.02	0.13	7,904.38	6,606.91	713.48	6,641.24	0.00	0.00	0.00
14,700.00	90.02	0.13	7,904.34	6,706.91	713.71	6,741.00	0.00	0.00	0.00
14,800.00	90.02	0.13	7,904.29	6,806.91	713.94	6,840.75	0.00	0.00	0.00
14,900.00	90.02	0.13	7,904.25	6,906.91	714.17	6,940.50	0.00	0.00	0.00
15,000.00	90.02	0.13	7,904.21	7,006.91	714.40	7,040.26	0.00	0.00	0.00
15,100.00	90.02	0.13	7,904.17	7,106.91	714.63	7,140.01	0.00	0.00	0.00
15,200.00	90.02	0.13	7,904.13	7,206.91	714.86	7,239.76	0.00	0.00	0.00
15,300.00	90.02	0.13	7,904.09	7,306.91	715.09	7,339.52	0.00	0.00	0.00

<b>Database:</b>	DB_Jul2216dt_v14	<b>Local Co-ordinate Reference:</b>	Well Ries Fee 202-2821H
<b>Company:</b>	Clear Creek Resources Partners	<b>TVD Reference:</b>	RKB=5579+21 @ 5600.00ft
<b>Project:</b>	Weld County, Colorado	<b>MD Reference:</b>	RKB=5579+21 @ 5600.00ft
<b>Site:</b>	Section 28-T12N-R64W	<b>North Reference:</b>	True
<b>Well:</b>	Ries Fee 202-2821H	<b>Survey Calculation Method:</b>	Minimum Curvature
<b>Wellbore:</b>	Original Hole		
<b>Design:</b>	plan1		

Planned Survey										
Measured Depth (ft)	Inclination (°)	Azimuth (°)	Vertical Depth (ft)	+N/-S (ft)	+E/-W (ft)	Vertical Section (ft)	Dogleg Rate (°/100ft)	Build Rate (°/100ft)	Turn Rate (°/100ft)	
15,400.00	90.02	0.13	7,904.05	7,406.91	715.32	7,439.27	0.00	0.00	0.00	
15,500.00	90.02	0.13	7,904.00	7,506.91	715.54	7,539.02	0.00	0.00	0.00	
15,600.00	90.02	0.13	7,903.96	7,606.91	715.77	7,638.78	0.00	0.00	0.00	
15,700.00	90.02	0.13	7,903.92	7,706.91	716.00	7,738.53	0.00	0.00	0.00	
15,800.00	90.02	0.13	7,903.88	7,806.90	716.23	7,838.28	0.00	0.00	0.00	
15,900.00	90.02	0.13	7,903.84	7,906.90	716.46	7,938.04	0.00	0.00	0.00	
16,000.00	90.02	0.13	7,903.80	8,006.90	716.69	8,037.79	0.00	0.00	0.00	
16,100.00	90.02	0.13	7,903.75	8,106.90	716.92	8,137.54	0.00	0.00	0.00	
16,200.00	90.02	0.13	7,903.71	8,206.90	717.15	8,237.30	0.00	0.00	0.00	
16,300.00	90.02	0.13	7,903.67	8,306.90	717.38	8,337.05	0.00	0.00	0.00	
16,400.00	90.02	0.13	7,903.63	8,406.90	717.61	8,436.80	0.00	0.00	0.00	
16,500.00	90.02	0.13	7,903.59	8,506.90	717.84	8,536.56	0.00	0.00	0.00	
16,600.00	90.02	0.13	7,903.55	8,606.90	718.07	8,636.31	0.00	0.00	0.00	
16,700.00	90.02	0.13	7,903.51	8,706.90	718.29	8,736.06	0.00	0.00	0.00	
16,800.00	90.02	0.13	7,903.46	8,806.90	718.52	8,835.82	0.00	0.00	0.00	
16,900.00	90.02	0.13	7,903.42	8,906.90	718.75	8,935.57	0.00	0.00	0.00	
17,000.00	90.02	0.13	7,903.38	9,006.90	718.98	9,035.32	0.00	0.00	0.00	
17,100.00	90.02	0.13	7,903.34	9,106.90	719.21	9,135.08	0.00	0.00	0.00	
17,200.00	90.02	0.13	7,903.30	9,206.90	719.44	9,234.83	0.00	0.00	0.00	
17,300.00	90.02	0.13	7,903.26	9,306.90	719.67	9,334.58	0.00	0.00	0.00	
17,400.00	90.02	0.13	7,903.21	9,406.90	719.90	9,434.34	0.00	0.00	0.00	
17,500.00	90.02	0.13	7,903.17	9,506.90	720.13	9,534.09	0.00	0.00	0.00	
17,600.00	90.02	0.13	7,903.13	9,606.90	720.36	9,633.84	0.00	0.00	0.00	
17,700.00	90.02	0.13	7,903.09	9,706.90	720.59	9,733.60	0.00	0.00	0.00	
17,800.00	90.02	0.13	7,903.05	9,806.90	720.82	9,833.35	0.00	0.00	0.00	
17,900.00	90.02	0.13	7,903.01	9,906.90	721.05	9,933.10	0.00	0.00	0.00	
17,915.57	90.02	0.13	7,903.00	9,922.47	721.08	9,948.64	0.00	0.00	0.00	
PBHL/TD 17915.57 MD/7903.00 TVD										

Design Targets									
Target Name	Dip Angle (°)	Dip Dir. (°)	TVD (ft)	+N/-S (ft)	+E/-W (ft)	Northing (usft)	Easting (usft)	Latitude	Longitude
Ries Fee 202-2821H PB - hit/miss target - Shape - Point	0.00	0.00	7,903.00	9,922.47	721.08	1,608,566.45	3,262,950.72	40.99999227	-104.54741782
Ries Fee 202-2821H EP - plan hits target center - Point	0.00	0.00	7,907.00	295.34	699.02	1,598,939.66	3,263,031.79	40.97357052	-104.54749874

Plan Annotations				
Measured Depth (ft)	Vertical Depth (ft)	Local Coordinates		Comment
		+N/-S (ft)	+E/-W (ft)	
2,500.00	2,500.00	0.00	0.00	KOP Begin 2°/100' build
2,918.41	2,916.92	-12.48	27.83	Begin 8.37° tangent
7,354.22	7,305.51	-276.66	616.86	Begin 10°/100' build/turn
8,288.42	7,907.00	295.34	699.02	Begin 90.02° lateral
17,915.57	7,903.00	9,922.47	721.08	PBHL/TD 17915.57 MD/7903.00 TVD

<b>Database:</b>	DB_Jul2216dt_v14	<b>Local Co-ordinate Reference:</b>	Well Ries Fee 202-2821H
<b>Company:</b>	Clear Creek Resources Partners	<b>TVD Reference:</b>	RKB=5579+21 @ 5600.00ft
<b>Project:</b>	Weld County, Colorado	<b>MD Reference:</b>	RKB=5579+21 @ 5600.00ft
<b>Site:</b>	Section 28-T12N-R64W	<b>North Reference:</b>	True
<b>Well:</b>	Ries Fee 202-2821H	<b>Survey Calculation Method:</b>	Minimum Curvature
<b>Wellbore:</b>	Original Hole		
<b>Design:</b>	plan1		

<b>Project</b>	Weld County, Colorado		
<b>Map System:</b>	US State Plane 1983	<b>System Datum:</b>	Mean Sea Level
<b>Geo Datum:</b>	North American Datum 1983		
<b>Map Zone:</b>	Colorado Northern Zone		

Site		Section 28-T12N-R64W			
Site Position:		Northing:	1,600,935.50 usft	Latitude:	40.97908764
From:	Map	Easting:	3,261,678.61 usft	Longitude:	-104.55232132
Position Uncertainty:	0.00 ft	Slot Radius:	13-3/16 "	Grid Convergence:	0.61 °

Well	Ries Fee 202-2821H, Surf loc: 323 FSL 1977 FEL Section 28-T12N-R64W					
Well Position	+N/-S	0.00 ft	Northing:	1,598,636.84 usft	Latitude:	40.97275997
	+E/-W	0.00 ft	Easting:	3,262,335.98 usft	Longitude:	-104.55003000
Position Uncertainty		0.00 ft	Wellhead Elevation:		Ground Level:	5,579.00 ft

<b>Wellbore</b>	Original Hole				
<b>Magnetics</b>	<b>Model Name</b>	<b>Sample Date</b>	<b>Declination (°)</b>	<b>Dip Angle (°)</b>	<b>Field Strength (nT)</b>
	HDGM	4/8/2018	8.50	67.28	52,758.40000000

<b>Design</b>	plan1			
<b>Audit Notes:</b>				
<b>Version:</b>	<b>Phase:</b>	PLAN	<b>Tie On Depth:</b>	0.00
<b>Vertical Section:</b>	<b>Depth From (TVD) (ft)</b>	<b>+N/-S (ft)</b>	<b>+E/-W (ft)</b>	<b>Direction (°)</b>
	0.00	0.00	0.00	4.16

<b>Plan Survey Tool Program</b>	<b>Date</b>	4/8/2018		
<b>Depth From (ft)</b>	<b>Depth To (ft)</b>	<b>Survey (Wellbore)</b>	<b>Tool Name</b>	<b>Remarks</b>
1	0.00	17,915.51 plan1 (Original Hole)	MWD	
			OWSG MWD - Standard	

<b>Plan Sections</b>										
<b>Measured Depth (ft)</b>	<b>Inclination (°)</b>	<b>Azimuth (°)</b>	<b>Vertical Depth (ft)</b>	<b>+N/-S (ft)</b>	<b>+E/-W (ft)</b>	<b>Dogleg Rate (°/100ft)</b>	<b>Build Rate (°/100ft)</b>	<b>Turn Rate (°/100ft)</b>	<b>TFO (°)</b>	<b>Target</b>
0.00	0.00	0.00	0.00	0.00	0.00	0.00	0.00	0.00	0.00	
2,500.00	0.00	0.00	2,500.00	0.00	0.00	0.00	0.00	0.00	0.00	
2,918.41	8.37	114.16	2,916.92	-12.48	27.83	2.00	2.00	0.00	114.16	
7,354.22	8.37	114.16	7,305.50	-276.66	616.86	0.00	0.00	0.00	0.00	
8,288.42	90.02	0.13	7,907.00	295.34	699.02	10.00	8.74	-12.21	-113.79	Ries Fee 202-2821H
17,915.57	90.02	0.13	7,903.00	9,922.47	721.08	0.00	0.00	0.00	0.00	Ries Fee 202-2821H



<b>Database:</b>	DB_Jul2216dt_v14	<b>Local Co-ordinate Reference:</b>	Well Ries Fee 202-2821H
<b>Company:</b>	Clear Creek Resources Partners	<b>TVD Reference:</b>	RKB=5579+21 @ 5600.00ft
<b>Project:</b>	Weld County, Colorado	<b>MD Reference:</b>	RKB=5579+21 @ 5600.00ft
<b>Site:</b>	Section 28-T12N-R64W	<b>North Reference:</b>	True
<b>Well:</b>	Ries Fee 202-2821H	<b>Survey Calculation Method:</b>	Minimum Curvature
<b>Wellbore:</b>	Original Hole		
<b>Design:</b>	plan1		

Planned Survey									
Measured Depth (ft)	Inclination (°)	Azimuth (°)	Vertical Depth (ft)	+N/-S (ft)	+E/-W (ft)	Map Northing (usft)	Map Easting (usft)	Latitude	Longitude
0.00	0.00	0.00	0.00	0.00	0.00	1,598,636.84	3,262,335.98	40.97275997	-104.55003000
100.00	0.00	0.00	100.00	0.00	0.00	1,598,636.84	3,262,335.98	40.97275997	-104.55003000
200.00	0.00	0.00	200.00	0.00	0.00	1,598,636.84	3,262,335.98	40.97275997	-104.55003000
300.00	0.00	0.00	300.00	0.00	0.00	1,598,636.84	3,262,335.98	40.97275997	-104.55003000
400.00	0.00	0.00	400.00	0.00	0.00	1,598,636.84	3,262,335.98	40.97275997	-104.55003000
500.00	0.00	0.00	500.00	0.00	0.00	1,598,636.84	3,262,335.98	40.97275997	-104.55003000
600.00	0.00	0.00	600.00	0.00	0.00	1,598,636.84	3,262,335.98	40.97275997	-104.55003000
700.00	0.00	0.00	700.00	0.00	0.00	1,598,636.84	3,262,335.98	40.97275997	-104.55003000
800.00	0.00	0.00	800.00	0.00	0.00	1,598,636.84	3,262,335.98	40.97275997	-104.55003000
900.00	0.00	0.00	900.00	0.00	0.00	1,598,636.84	3,262,335.98	40.97275997	-104.55003000
1,000.00	0.00	0.00	1,000.00	0.00	0.00	1,598,636.84	3,262,335.98	40.97275997	-104.55003000
1,100.00	0.00	0.00	1,100.00	0.00	0.00	1,598,636.84	3,262,335.98	40.97275997	-104.55003000
1,200.00	0.00	0.00	1,200.00	0.00	0.00	1,598,636.84	3,262,335.98	40.97275997	-104.55003000
1,300.00	0.00	0.00	1,300.00	0.00	0.00	1,598,636.84	3,262,335.98	40.97275997	-104.55003000
1,400.00	0.00	0.00	1,400.00	0.00	0.00	1,598,636.84	3,262,335.98	40.97275997	-104.55003000
1,500.00	0.00	0.00	1,500.00	0.00	0.00	1,598,636.84	3,262,335.98	40.97275997	-104.55003000
1,600.00	0.00	0.00	1,600.00	0.00	0.00	1,598,636.84	3,262,335.98	40.97275997	-104.55003000
1,700.00	0.00	0.00	1,700.00	0.00	0.00	1,598,636.84	3,262,335.98	40.97275997	-104.55003000
1,800.00	0.00	0.00	1,800.00	0.00	0.00	1,598,636.84	3,262,335.98	40.97275997	-104.55003000
1,900.00	0.00	0.00	1,900.00	0.00	0.00	1,598,636.84	3,262,335.98	40.97275997	-104.55003000
2,000.00	0.00	0.00	2,000.00	0.00	0.00	1,598,636.84	3,262,335.98	40.97275997	-104.55003000
2,100.00	0.00	0.00	2,100.00	0.00	0.00	1,598,636.84	3,262,335.98	40.97275997	-104.55003000
2,200.00	0.00	0.00	2,200.00	0.00	0.00	1,598,636.84	3,262,335.98	40.97275997	-104.55003000
2,300.00	0.00	0.00	2,300.00	0.00	0.00	1,598,636.84	3,262,335.98	40.97275997	-104.55003000
2,400.00	0.00	0.00	2,400.00	0.00	0.00	1,598,636.84	3,262,335.98	40.97275997	-104.55003000
2,500.00	0.00	0.00	2,500.00	0.00	0.00	1,598,636.84	3,262,335.98	40.97275997	-104.55003000
<b>KOP Begin 2°/100' build</b>									
2,600.00	2.00	114.16	2,599.98	-0.71	1.59	1,598,636.14	3,262,337.58	40.97275801	-104.55002423
2,700.00	4.00	114.16	2,699.84	-2.86	6.37	1,598,634.05	3,262,342.38	40.97275213	-104.55000694
2,800.00	6.00	114.16	2,799.45	-6.42	14.32	1,598,630.57	3,262,350.37	40.97274234	-104.54997814
2,900.00	8.00	114.16	2,898.70	-11.41	25.44	1,598,625.70	3,262,361.54	40.97272865	-104.54993788
2,918.41	8.37	114.16	2,916.92	-12.48	27.83	1,598,624.66	3,262,363.94	40.97272571	-104.54992922
<b>Begin 8.37° tangent</b>									
3,000.00	8.37	114.16	2,997.65	-17.34	38.66	1,598,619.92	3,262,374.83	40.97271238	-104.54988999
3,100.00	8.37	114.16	3,096.58	-23.30	51.94	1,598,614.10	3,262,388.17	40.97269603	-104.54984190
3,200.00	8.37	114.16	3,195.52	-29.25	65.22	1,598,608.29	3,262,401.51	40.97267968	-104.54979382
3,300.00	8.37	114.16	3,294.45	-35.21	78.50	1,598,602.48	3,262,414.86	40.97266334	-104.54974573
3,400.00	8.37	114.16	3,393.39	-41.16	91.78	1,598,596.66	3,262,428.20	40.97264699	-104.54969765
3,500.00	8.37	114.16	3,492.32	-47.12	105.06	1,598,590.85	3,262,441.54	40.97263065	-104.54964957
3,600.00	8.37	114.16	3,591.26	-53.07	118.34	1,598,585.04	3,262,454.88	40.97261430	-104.54960148
3,700.00	8.37	114.16	3,690.19	-59.03	131.62	1,598,579.22	3,262,468.22	40.97259796	-104.54955340
3,800.00	8.37	114.16	3,789.13	-64.98	144.90	1,598,573.41	3,262,481.56	40.97258161	-104.54950531
3,900.00	8.37	114.16	3,888.06	-70.94	158.17	1,598,567.60	3,262,494.91	40.97256527	-104.54945723
4,000.00	8.37	114.16	3,987.00	-76.90	171.45	1,598,561.79	3,262,508.25	40.97254892	-104.54940914
4,100.00	8.37	114.16	4,085.93	-82.85	184.73	1,598,555.97	3,262,521.59	40.97253258	-104.54936106
4,200.00	8.37	114.16	4,184.87	-88.81	198.01	1,598,550.16	3,262,534.93	40.97251623	-104.54931298
4,300.00	8.37	114.16	4,283.80	-94.76	211.29	1,598,544.35	3,262,548.27	40.97249989	-104.54926489
4,400.00	8.37	114.16	4,382.74	-100.72	224.57	1,598,538.53	3,262,561.62	40.97248354	-104.54921681
4,500.00	8.37	114.16	4,481.68	-106.67	237.85	1,598,532.72	3,262,574.96	40.97246720	-104.54916872
4,600.00	8.37	114.16	4,580.61	-112.63	251.13	1,598,526.91	3,262,588.30	40.97245085	-104.54912064
4,700.00	8.37	114.16	4,679.55	-118.58	264.41	1,598,521.10	3,262,601.64	40.97243451	-104.54907255
4,800.00	8.37	114.16	4,778.48	-124.54	277.68	1,598,515.28	3,262,614.98	40.97241816	-104.54902447
4,900.00	8.37	114.16	4,877.42	-130.50	290.96	1,598,509.47	3,262,628.33	40.97240181	-104.54897639
5,000.00	8.37	114.16	4,976.35	-136.45	304.24	1,598,503.66	3,262,641.67	40.97238547	-104.54892830



<b>Database:</b>	DB_Jul2216dt_v14	<b>Local Co-ordinate Reference:</b>	Well Ries Fee 202-2821H
<b>Company:</b>	Clear Creek Resources Partners	<b>TVD Reference:</b>	RKB=5579+21 @ 5600.00ft
<b>Project:</b>	Weld County, Colorado	<b>MD Reference:</b>	RKB=5579+21 @ 5600.00ft
<b>Site:</b>	Section 28-T12N-R64W	<b>North Reference:</b>	True
<b>Well:</b>	Ries Fee 202-2821H	<b>Survey Calculation Method:</b>	Minimum Curvature
<b>Wellbore:</b>	Original Hole		
<b>Design:</b>	plan1		

Planned Survey									
Measured Depth (ft)	Inclination (°)	Azimuth (°)	Vertical Depth (ft)	+N/-S (ft)	+E/-W (ft)	Map Northing (usft)	Map Easting (usft)	Latitude	Longitude
5,100.00	8.37	114.16	5,075.29	-142.41	317.52	1,598,497.84	3,262,655.01	40.97236912	-104.54888022
5,200.00	8.37	114.16	5,174.22	-148.36	330.80	1,598,492.03	3,262,668.35	40.97235278	-104.54883213
5,300.00	8.37	114.16	5,273.16	-154.32	344.08	1,598,486.22	3,262,681.69	40.97233643	-104.54878405
5,400.00	8.37	114.16	5,372.09	-160.27	357.36	1,598,480.41	3,262,695.04	40.97232009	-104.54873597
5,500.00	8.37	114.16	5,471.03	-166.23	370.64	1,598,474.59	3,262,708.38	40.97230374	-104.54868788
5,600.00	8.37	114.16	5,569.96	-172.18	383.92	1,598,468.78	3,262,721.72	40.97228740	-104.54863980
5,700.00	8.37	114.16	5,668.90	-178.14	397.20	1,598,462.97	3,262,735.06	40.97227105	-104.54859172
5,800.00	8.37	114.16	5,767.84	-184.09	410.47	1,598,457.15	3,262,748.40	40.97225470	-104.54854363
5,900.00	8.37	114.16	5,866.77	-190.05	423.75	1,598,451.34	3,262,761.75	40.97223836	-104.54849555
6,000.00	8.37	114.16	5,965.71	-196.01	437.03	1,598,445.53	3,262,775.09	40.97222201	-104.54844746
6,100.00	8.37	114.16	6,064.64	-201.96	450.31	1,598,439.72	3,262,788.43	40.97220567	-104.54839938
6,200.00	8.37	114.16	6,163.58	-207.92	463.59	1,598,433.90	3,262,801.77	40.97218932	-104.54835130
6,300.00	8.37	114.16	6,262.51	-213.87	476.87	1,598,428.09	3,262,815.11	40.97217298	-104.54830321
6,400.00	8.37	114.16	6,361.45	-219.83	490.15	1,598,422.28	3,262,828.46	40.97215663	-104.54825513
6,500.00	8.37	114.16	6,460.38	-225.78	503.43	1,598,416.46	3,262,841.80	40.97214028	-104.54820704
6,600.00	8.37	114.16	6,559.32	-231.74	516.71	1,598,410.65	3,262,855.14	40.97212394	-104.54815896
6,700.00	8.37	114.16	6,658.25	-237.69	529.98	1,598,404.84	3,262,868.48	40.97210759	-104.54811088
6,800.00	8.37	114.16	6,757.19	-243.65	543.26	1,598,399.03	3,262,881.82	40.97209125	-104.54806279
6,900.00	8.37	114.16	6,856.12	-249.61	556.54	1,598,393.21	3,262,895.16	40.97207490	-104.54801471
7,000.00	8.37	114.16	6,955.06	-255.56	569.82	1,598,387.40	3,262,908.51	40.97205856	-104.54796663
7,100.00	8.37	114.16	7,053.99	-261.52	583.10	1,598,381.59	3,262,921.85	40.97204221	-104.54791854
7,200.00	8.37	114.16	7,152.93	-267.47	596.38	1,598,375.77	3,262,935.19	40.97202586	-104.54787046
7,300.00	8.37	114.16	7,251.87	-273.43	609.66	1,598,369.96	3,262,948.53	40.97200952	-104.54782238
7,354.22	8.37	114.16	7,305.51	-276.66	616.86	1,598,366.81	3,262,955.77	40.97200065	-104.54779631
Begin 10°/100' build/turn									
7,400.00	7.74	81.33	7,350.86	-277.55	622.95	1,598,365.98	3,262,961.87	40.97199819	-104.54777425
7,500.00	13.52	34.10	7,449.27	-266.83	636.20	1,598,376.84	3,262,975.00	40.97202762	-104.54772628
7,600.00	22.46	19.10	7,544.33	-239.03	649.03	1,598,404.78	3,262,987.54	40.97210393	-104.54767979
7,700.00	32.02	12.54	7,633.16	-194.99	661.07	1,598,448.95	3,262,999.10	40.97222479	-104.54763619
7,800.00	41.76	8.79	7,713.05	-136.05	671.95	1,598,507.99	3,263,009.34	40.97238654	-104.54759682
7,900.00	51.59	6.25	7,781.58	-64.01	681.32	1,598,580.13	3,263,017.95	40.97258426	-104.54756285
8,000.00	61.46	4.32	7,836.67	18.95	688.92	1,598,663.17	3,263,024.66	40.97281194	-104.54753534
8,100.00	71.36	2.73	7,876.65	110.30	694.50	1,598,754.57	3,263,029.26	40.97306266	-104.54751510
8,200.00	81.26	1.32	7,900.29	207.28	697.91	1,598,851.58	3,263,031.63	40.97332881	-104.54750277
8,288.42	90.02	0.13	7,907.00	295.34	699.02	1,598,939.66	3,263,031.79	40.97357052	-104.54749874
Begin 90.02° lateral									
8,300.00	90.02	0.13	7,907.00	306.92	699.04	1,598,951.24	3,263,031.70	40.97360230	-104.54749864
8,400.00	90.02	0.13	7,906.95	406.92	699.27	1,599,051.23	3,263,030.85	40.97387675	-104.54749780
8,500.00	90.02	0.13	7,906.91	506.92	699.50	1,599,151.23	3,263,030.01	40.97415121	-104.54749696
8,600.00	90.02	0.13	7,906.87	606.92	699.73	1,599,251.22	3,263,029.17	40.97442566	-104.54749612
8,700.00	90.02	0.13	7,906.83	706.92	699.96	1,599,351.22	3,263,028.33	40.97470011	-104.54749528
8,800.00	90.02	0.13	7,906.79	806.92	700.19	1,599,451.22	3,263,027.48	40.97497456	-104.54749444
8,900.00	90.02	0.13	7,906.75	906.92	700.42	1,599,551.21	3,263,026.64	40.97524901	-104.54749360
9,000.00	90.02	0.13	7,906.70	1,006.92	700.65	1,599,651.21	3,263,025.80	40.97552346	-104.54749276
9,100.00	90.02	0.13	7,906.66	1,106.92	700.88	1,599,751.21	3,263,024.96	40.97579792	-104.54749192
9,200.00	90.02	0.13	7,906.62	1,206.92	701.11	1,599,851.20	3,263,024.12	40.97607237	-104.54749108
9,300.00	90.02	0.13	7,906.58	1,306.92	701.34	1,599,951.20	3,263,023.27	40.97634682	-104.54749024
9,400.00	90.02	0.13	7,906.54	1,406.92	701.56	1,600,051.19	3,263,022.43	40.97662127	-104.54748940
9,500.00	90.02	0.13	7,906.50	1,506.92	701.79	1,600,151.19	3,263,021.59	40.97689572	-104.54748856
9,600.00	90.02	0.13	7,906.46	1,606.92	702.02	1,600,251.19	3,263,020.75	40.97717017	-104.54748772
9,700.00	90.02	0.13	7,906.41	1,706.92	702.25	1,600,351.18	3,263,019.91	40.97744463	-104.54748688
9,800.00	90.02	0.13	7,906.37	1,806.92	702.48	1,600,451.18	3,263,019.06	40.97771908	-104.54748604
9,900.00	90.02	0.13	7,906.33	1,906.92	702.71	1,600,551.18	3,263,018.22	40.97799353	-104.54748520
10,000.00	90.02	0.13	7,906.29	2,006.92	702.94	1,600,651.17	3,263,017.38	40.97826798	-104.54748436

<b>Database:</b>	DB_Jul2216dt_v14	<b>Local Co-ordinate Reference:</b>	Well Ries Fee 202-2821H
<b>Company:</b>	Clear Creek Resources Partners	<b>TVD Reference:</b>	RKB=5579+21 @ 5600.00ft
<b>Project:</b>	Weld County, Colorado	<b>MD Reference:</b>	RKB=5579+21 @ 5600.00ft
<b>Site:</b>	Section 28-T12N-R64W	<b>North Reference:</b>	True
<b>Well:</b>	Ries Fee 202-2821H	<b>Survey Calculation Method:</b>	Minimum Curvature
<b>Wellbore:</b>	Original Hole		
<b>Design:</b>	plan1		

Planned Survey									
Measured Depth (ft)	Inclination (°)	Azimuth (°)	Vertical Depth (ft)	+N/-S (ft)	+E/-W (ft)	Map Northing (usft)	Map Easting (usft)	Latitude	Longitude
10,100.00	90.02	0.13	7,906.25	2,106.92	703.17	1,600,751.17	3,263,016.54	40.97854243	-104.54748352
10,200.00	90.02	0.13	7,906.21	2,206.92	703.40	1,600,851.16	3,263,015.70	40.97881688	-104.54748268
10,300.00	90.02	0.13	7,906.16	2,306.92	703.63	1,600,951.16	3,263,014.85	40.97909133	-104.54748184
10,400.00	90.02	0.13	7,906.12	2,406.92	703.86	1,601,051.16	3,263,014.01	40.97936578	-104.54748100
10,500.00	90.02	0.13	7,906.08	2,506.92	704.09	1,601,151.15	3,263,013.17	40.97964024	-104.54748016
10,600.00	90.02	0.13	7,906.04	2,606.92	704.31	1,601,251.15	3,263,012.33	40.97991469	-104.54747932
10,700.00	90.02	0.13	7,906.00	2,706.92	704.54	1,601,351.15	3,263,011.49	40.98018914	-104.54747848
10,800.00	90.02	0.13	7,905.96	2,806.92	704.77	1,601,451.14	3,263,010.64	40.98046359	-104.54747764
10,900.00	90.02	0.13	7,905.92	2,906.92	705.00	1,601,551.14	3,263,009.80	40.98073804	-104.54747680
11,000.00	90.02	0.13	7,905.87	3,006.92	705.23	1,601,651.13	3,263,008.96	40.98101249	-104.54747595
11,100.00	90.02	0.13	7,905.83	3,106.92	705.46	1,601,751.13	3,263,008.12	40.98128694	-104.54747511
11,200.00	90.02	0.13	7,905.79	3,206.92	705.69	1,601,851.13	3,263,007.27	40.98156139	-104.54747427
11,300.00	90.02	0.13	7,905.75	3,306.92	705.92	1,601,951.12	3,263,006.43	40.98183584	-104.54747343
11,400.00	90.02	0.13	7,905.71	3,406.92	706.15	1,602,051.12	3,263,005.59	40.98211029	-104.54747259
11,500.00	90.02	0.13	7,905.67	3,506.92	706.38	1,602,151.12	3,263,004.75	40.98238475	-104.54747175
11,600.00	90.02	0.13	7,905.62	3,606.92	706.61	1,602,251.11	3,263,003.91	40.98265920	-104.54747091
11,700.00	90.02	0.13	7,905.58	3,706.92	706.84	1,602,351.11	3,263,003.06	40.98293365	-104.54747007
11,800.00	90.02	0.13	7,905.54	3,806.92	707.06	1,602,451.10	3,263,002.22	40.98320810	-104.54746923
11,900.00	90.02	0.13	7,905.50	3,906.92	707.29	1,602,551.10	3,263,001.38	40.98348255	-104.54746839
12,000.00	90.02	0.13	7,905.46	4,006.91	707.52	1,602,651.10	3,263,000.54	40.98375700	-104.54746755
12,100.00	90.02	0.13	7,905.42	4,106.91	707.75	1,602,751.09	3,262,999.70	40.98403145	-104.54746671
12,200.00	90.02	0.13	7,905.37	4,206.91	707.98	1,602,851.09	3,262,998.85	40.98430590	-104.54746587
12,300.00	90.02	0.13	7,905.33	4,306.91	708.21	1,602,951.09	3,262,998.01	40.98458035	-104.54746503
12,400.00	90.02	0.13	7,905.29	4,406.91	708.44	1,603,051.08	3,262,997.17	40.98485480	-104.54746419
12,500.00	90.02	0.13	7,905.25	4,506.91	708.67	1,603,151.08	3,262,996.33	40.98512925	-104.54746335
12,600.00	90.02	0.13	7,905.21	4,606.91	708.90	1,603,251.07	3,262,995.49	40.98540370	-104.54746251
12,700.00	90.02	0.13	7,905.17	4,706.91	709.13	1,603,351.07	3,262,994.64	40.98567815	-104.54746167
12,800.00	90.02	0.13	7,905.13	4,806.91	709.36	1,603,451.07	3,262,993.80	40.98595260	-104.54746083
12,900.00	90.02	0.13	7,905.08	4,906.91	709.59	1,603,551.06	3,262,992.96	40.98622705	-104.54745999
13,000.00	90.02	0.13	7,905.04	5,006.91	709.82	1,603,651.06	3,262,992.12	40.98650151	-104.54745914
13,100.00	90.02	0.13	7,905.00	5,106.91	710.04	1,603,751.06	3,262,991.27	40.98677596	-104.54745830
13,200.00	90.02	0.13	7,904.96	5,206.91	710.27	1,603,851.05	3,262,990.43	40.98705041	-104.54745746
13,300.00	90.02	0.13	7,904.92	5,306.91	710.50	1,603,951.05	3,262,989.59	40.98732486	-104.54745662
13,400.00	90.02	0.13	7,904.88	5,406.91	710.73	1,604,051.04	3,262,988.75	40.98759931	-104.54745578
13,500.00	90.02	0.13	7,904.83	5,506.91	710.96	1,604,151.04	3,262,987.91	40.98787376	-104.54745494
13,600.00	90.02	0.13	7,904.79	5,606.91	711.19	1,604,251.04	3,262,987.06	40.98814821	-104.54745410
13,700.00	90.02	0.13	7,904.75	5,706.91	711.42	1,604,351.03	3,262,986.22	40.98842266	-104.54745326
13,800.00	90.02	0.13	7,904.71	5,806.91	711.65	1,604,451.03	3,262,985.38	40.98869711	-104.54745242
13,900.00	90.02	0.13	7,904.67	5,906.91	711.88	1,604,551.03	3,262,984.54	40.98897156	-104.54745158
14,000.00	90.02	0.13	7,904.63	6,006.91	712.11	1,604,651.02	3,262,983.70	40.98924601	-104.54745074
14,100.00	90.02	0.13	7,904.59	6,106.91	712.34	1,604,751.02	3,262,982.85	40.98952046	-104.54744990
14,200.00	90.02	0.13	7,904.54	6,206.91	712.57	1,604,851.01	3,262,982.01	40.98979491	-104.54744906
14,300.00	90.02	0.13	7,904.50	6,306.91	712.79	1,604,951.01	3,262,981.17	40.99006936	-104.54744822
14,400.00	90.02	0.13	7,904.46	6,406.91	713.02	1,605,051.01	3,262,980.33	40.99034381	-104.54744738
14,500.00	90.02	0.13	7,904.42	6,506.91	713.25	1,605,151.00	3,262,979.49	40.99061826	-104.54744654
14,600.00	90.02	0.13	7,904.38	6,606.91	713.48	1,605,251.00	3,262,978.64	40.99089271	-104.54744569
14,700.00	90.02	0.13	7,904.34	6,706.91	713.71	1,605,351.00	3,262,977.80	40.99116716	-104.54744485
14,800.00	90.02	0.13	7,904.29	6,806.91	713.94	1,605,450.99	3,262,976.96	40.99144161	-104.54744401
14,900.00	90.02	0.13	7,904.25	6,906.91	714.17	1,605,550.99	3,262,976.12	40.99171606	-104.54744317
15,000.00	90.02	0.13	7,904.21	7,006.91	714.40	1,605,650.98	3,262,975.27	40.99199051	-104.54744233
15,100.00	90.02	0.13	7,904.17	7,106.91	714.63	1,605,750.98	3,262,974.43	40.99226496	-104.54744149
15,200.00	90.02	0.13	7,904.13	7,206.91	714.86	1,605,850.98	3,262,973.59	40.99253941	-104.54744065
15,300.00	90.02	0.13	7,904.09	7,306.91	715.09	1,605,950.97	3,262,972.75	40.99281386	-104.54743981
15,400.00	90.02	0.13	7,904.05	7,406.91	715.32	1,606,050.97	3,262,971.91	40.99308831	-104.54743897
15,500.00	90.02	0.13	7,904.00	7,506.91	715.54	1,606,150.97	3,262,971.06	40.99336276	-104.54743813

<b>Database:</b>	DB_Jul2216dt_v14	<b>Local Co-ordinate Reference:</b>	Well Ries Fee 202-2821H
<b>Company:</b>	Clear Creek Resources Partners	<b>TVD Reference:</b>	RKB=5579+21 @ 5600.00ft
<b>Project:</b>	Weld County, Colorado	<b>MD Reference:</b>	RKB=5579+21 @ 5600.00ft
<b>Site:</b>	Section 28-T12N-R64W	<b>North Reference:</b>	True
<b>Well:</b>	Ries Fee 202-2821H	<b>Survey Calculation Method:</b>	Minimum Curvature
<b>Wellbore:</b>	Original Hole		
<b>Design:</b>	plan1		

Planned Survey									
Measured Depth (ft)	Inclination (°)	Azimuth (°)	Vertical Depth (ft)	+N/-S (ft)	+E/-W (ft)	Map Northing (usft)	Map Easting (usft)	Latitude	Longitude
15,600.00	90.02	0.13	7,903.96	7,606.91	715.77	1,606,250.96	3,262,970.22	40.99363721	-104.54743729
15,700.00	90.02	0.13	7,903.92	7,706.91	716.00	1,606,350.96	3,262,969.38	40.99391165	-104.54743645
15,800.00	90.02	0.13	7,903.88	7,806.90	716.23	1,606,450.95	3,262,968.54	40.99418610	-104.54743561
15,900.00	90.02	0.13	7,903.84	7,906.90	716.46	1,606,550.95	3,262,967.70	40.99446055	-104.54743476
16,000.00	90.02	0.13	7,903.80	8,006.90	716.69	1,606,650.95	3,262,966.85	40.99473500	-104.54743392
16,100.00	90.02	0.13	7,903.75	8,106.90	716.92	1,606,750.94	3,262,966.01	40.99500945	-104.54743308
16,200.00	90.02	0.13	7,903.71	8,206.90	717.15	1,606,850.94	3,262,965.17	40.99528390	-104.54743224
16,300.00	90.02	0.13	7,903.67	8,306.90	717.38	1,606,950.94	3,262,964.33	40.99555835	-104.54743140
16,400.00	90.02	0.13	7,903.63	8,406.90	717.61	1,607,050.93	3,262,963.49	40.99583280	-104.54743056
16,500.00	90.02	0.13	7,903.59	8,506.90	717.84	1,607,150.93	3,262,962.64	40.99610725	-104.54742972
16,600.00	90.02	0.13	7,903.55	8,606.90	718.07	1,607,250.92	3,262,961.80	40.99638170	-104.54742888
16,700.00	90.02	0.13	7,903.51	8,706.90	718.29	1,607,350.92	3,262,960.96	40.99665615	-104.54742804
16,800.00	90.02	0.13	7,903.46	8,806.90	718.52	1,607,450.92	3,262,960.12	40.99693060	-104.54742720
16,900.00	90.02	0.13	7,903.42	8,906.90	718.75	1,607,550.91	3,262,959.28	40.99720505	-104.54742636
17,000.00	90.02	0.13	7,903.38	9,006.90	718.98	1,607,650.91	3,262,958.43	40.99747950	-104.54742552
17,100.00	90.02	0.13	7,903.34	9,106.90	719.21	1,607,750.91	3,262,957.59	40.99775395	-104.54742467
17,200.00	90.02	0.13	7,903.30	9,206.90	719.44	1,607,850.90	3,262,956.75	40.99802840	-104.54742383
17,300.00	90.02	0.13	7,903.26	9,306.90	719.67	1,607,950.90	3,262,955.91	40.99830284	-104.54742299
17,400.00	90.02	0.13	7,903.21	9,406.90	719.90	1,608,050.89	3,262,955.06	40.99857729	-104.54742215
17,500.00	90.02	0.13	7,903.17	9,506.90	720.13	1,608,150.89	3,262,954.22	40.99885174	-104.54742131
17,600.00	90.02	0.13	7,903.13	9,606.90	720.36	1,608,250.89	3,262,953.38	40.99912619	-104.54742047
17,700.00	90.02	0.13	7,903.09	9,706.90	720.59	1,608,350.88	3,262,952.54	40.99940064	-104.54741963
17,800.00	90.02	0.13	7,903.05	9,806.90	720.82	1,608,450.88	3,262,951.70	40.99967509	-104.54741879
17,900.00	90.02	0.13	7,903.01	9,906.90	721.05	1,608,550.88	3,262,950.85	40.99994954	-104.54741795
17,915.57	90.02	0.13	7,903.00	9,922.47	721.08	1,608,566.45	3,262,950.72	40.99999227	-104.54741782
PBHL/TD 17915.57 MD/7903.00 TVD									

Design Targets									
Target Name	Dip Angle (°)	Dip Dir. (°)	TVD (ft)	+N/-S (ft)	+E/-W (ft)	Northing (usft)	Easting (usft)	Latitude	Longitude
- hit/miss target									
- Shape									
Ries Fee 202-2821H PB - plan hits target center - Point	0.00	0.00	7,903.00	9,922.47	721.08	1,608,566.45	3,262,950.72	40.99999227	-104.54741782
Ries Fee 202-2821H EP - plan hits target center - Point	0.00	0.00	7,907.00	295.34	699.02	1,598,939.66	3,263,031.79	40.97357052	-104.54749874

Plan Annotations					
Measured Depth (ft)	Vertical Depth (ft)	Local Coordinates			
		+N/-S (ft)	+E/-W (ft)	Comment	
2,500.00	2,500.00	0.00	0.00	KOP Begin 2°/100' build	
2,918.41	2,916.92	-12.48	27.83	Begin 8.37° tangent	
7,354.22	7,305.51	-276.66	616.86	Begin 10°/100' build/turn	
8,288.42	7,907.00	295.34	699.02	Begin 90.02° lateral	
17,915.57	7,903.00	9,922.47	721.08	PBHL/TD 17915.57 MD/7903.00 TVD	