



Edge Energy, LLC

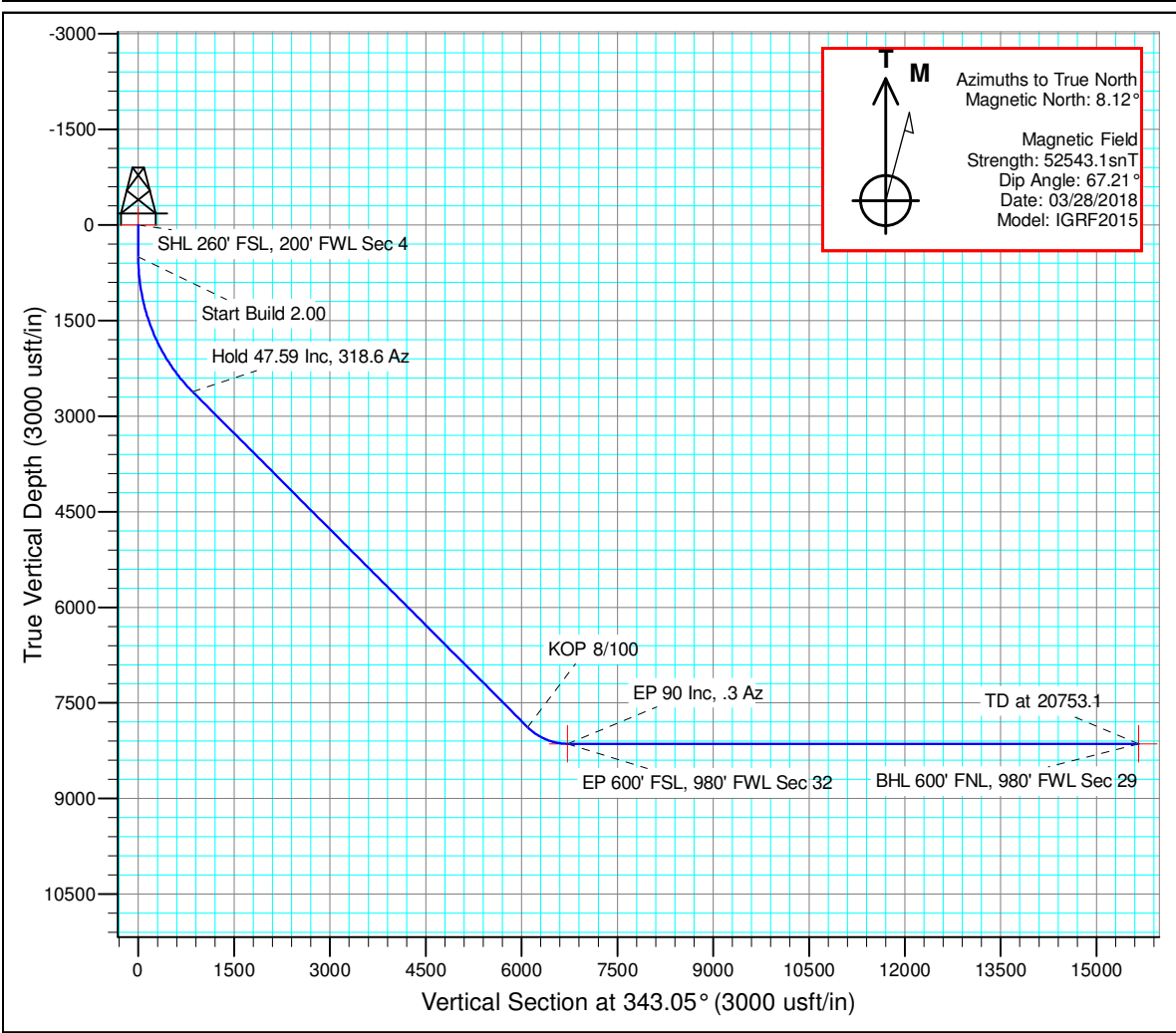
Well Name: Deporter 32-29-2H	Project Name: Sec. 4-T10N-R65W	Pad Name: Deporter 4-A
--	--	----------------------------------

ANNOTATIONS

TVD	MD	Inc	Azi	+N/-S	+E/-W	Vsect	Departure	Annotation
500.0	500.0	0.00	0.00	0.0	0.0	0.0	0.0	Start Build 2.00
2615.0	2879.3	47.59	318.60	699.5	-616.7	848.9	932.5	Hold 47.59 Inc, 318.6 Az
7880.2	10685.5	47.59	318.60	5022.3	-4428.2	6095.0	6695.8	KOP 8/100
8140.0	11392.3	90.00	0.30	5620.9	-4614.3	6721.8	7335.5	EP 90 Inc, .3 Az
8140.0	20753.1	90.00	0.30	14981.6	-4565.1	15661.6	16696.3	TD at 20753.1

DESIGN TARGET DETAILS

Name	TVD	+N/-S	+E/-W	Northing	Easting	Latitude	Longitude
SHL 260' FSL, 200' FWL Sec 4	0.0	0.0	0.0	1555844.38	3227874.76	40° 51' 22.550 N	104° 40' 34.509 W
BHL 600' FNL, 980' FWL Sec 29	8140.0	14981.6	-4565.1	1570782.88	3223170.67	40° 53' 50.573 N	104° 41' 33.954 W
EP 600' FSL, 980' FWL Sec 32	8140.0	5620.9	-4614.3	1561422.16	3223208.43	40° 52' 18.084 N	104° 41' 34.571 W

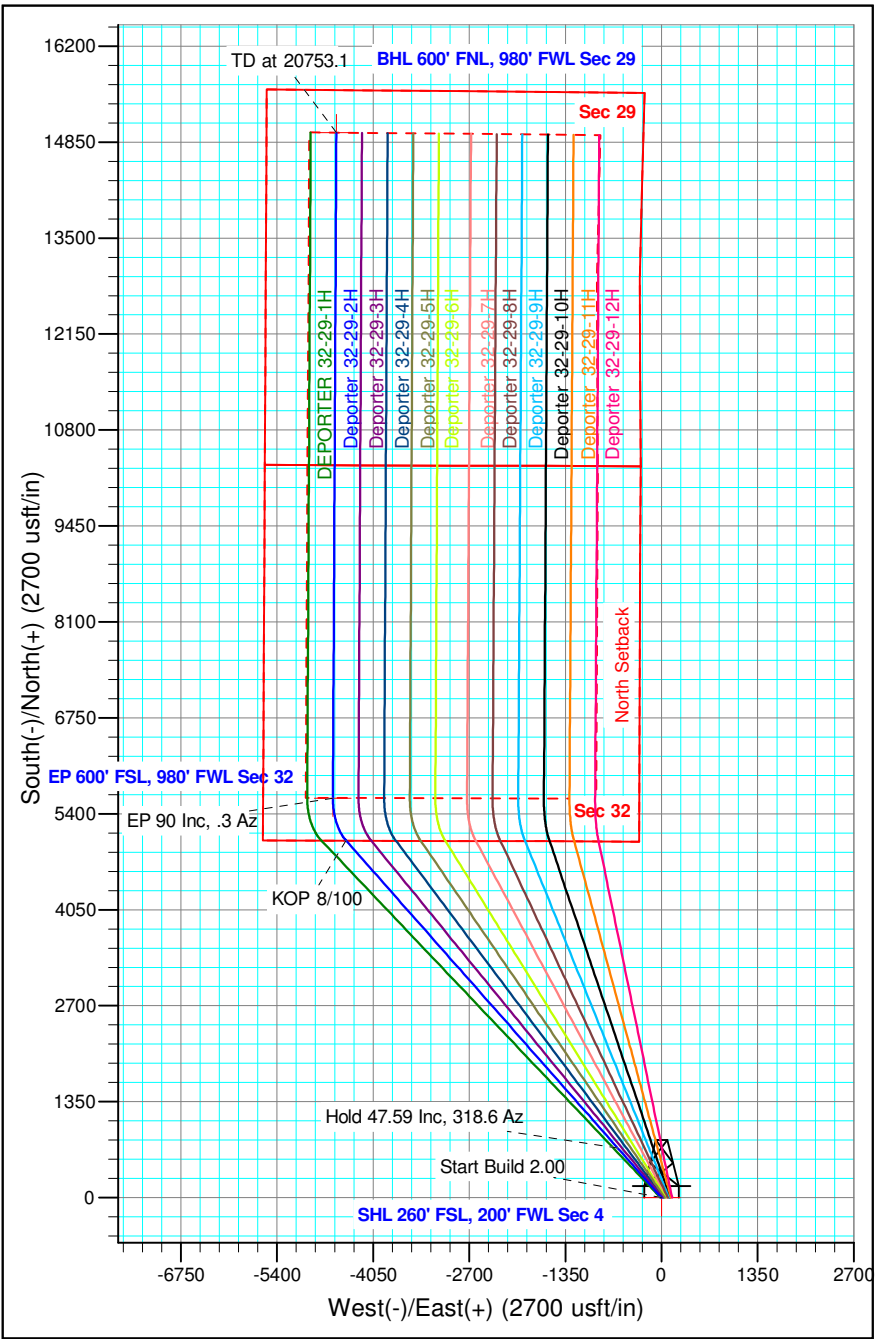


Geodetic Datum:

North American Datum 1983
US State Plane 1983, Colorado Northern Zone

Elevation:

Ground Elevation: 5385.0
WELL @ 5400.0usft (Original Well Elev)





Edge Energy, LLC

Sec. 4-T10N-R65W

Deporter 4-A

Deporter 32-29-2H

Wellbore #1

Plan: Design #1 28Mar18 mnh

Standard Planning Report - Geographic

28 March, 2018

Database:	EDM 5000.1 Single User Db	Local Co-ordinate Reference:	Well Reporter 32-29-2H
Company:	Edge Energy, LLC	TVD Reference:	WELL @ 5400.0usft (Original Well Elev)
Project:	Sec. 4-T10N-R65W	MD Reference:	WELL @ 5400.0usft (Original Well Elev)
Site:	Deporter 4-A	North Reference:	True
Well:	Deporter 32-29-2H	Survey Calculation Method:	Minimum Curvature
Wellbore:	Wellbore #1		
Design:	Design #1 28Mar18 mnh		

Project	Sec. 4-T10N-R65W, Weld County, CO		
Map System:	US State Plane 1983	System Datum:	Mean Sea Level
Geo Datum:	North American Datum 1983		
Map Zone:	Colorado Northern Zone		

Site		Deporter 4-A				
Site Position:		Northing:	1,555,844.40 usft	Latitude:	40° 51' 22.551 N	
From:	Map	Easting:	3,227,859.77 usft	Longitude:	104° 40' 34.704 W	
Position Uncertainty:		0.0 usft	Slot Radius:	13-3/16 "	Grid Convergence:	0.53 °

Well	Deporter 32-29-2H					
Well Position	+N/-S	0.0 usft	Northing:	1,555,844.38 usft	Latitude:	40° 51' 22.550 N
	+E/-W	0.0 usft	Easting:	3,227,874.76 usft	Longitude:	104° 40' 34.509 W
Position Uncertainty		0.0 usft	Wellhead Elevation:		Ground Level:	5,385.0 usft

Wellbore	Wellbore #1				
Magnetics	Model Name	Sample Date	Declination (°)	Dip Angle (°)	Field Strength (nT)
	IGRF2015	03/28/18	8.12	67.21	52,543

Design	Design #1 28Mar18 mnh			
Audit Notes:				
Version:	Phase:	PLAN	Tie On Depth:	0.0
Vertical Section:	Depth From (TVD) (usft)	+N/-S (usft)	+E/-W (usft)	Direction (°)
	0.0	0.0	0.0	343.05

Plan Sections										
Measured Depth (usft)	Inclination (°)	Azimuth (°)	Vertical Depth (usft)	+N/-S (usft)	+E/-W (usft)	Dogleg Rate (°/100usft)	Build Rate (°/100usft)	Turn Rate (°/100usft)	TFO (°)	Target
0.0	0.00	0.00	0.0	0.0	0.0	0.00	0.00	0.00	0.00	
500.0	0.00	0.00	500.0	0.0	0.0	0.00	0.00	0.00	0.00	
2,879.3	47.59	318.60	2,615.0	699.5	-616.7	2.00	2.00	0.00	318.60	
10,685.5	47.59	318.60	7,880.2	5,022.3	-4,428.2	0.00	0.00	0.00	0.00	
11,392.3	90.00	0.30	8,140.0	5,620.9	-4,614.3	8.00	6.00	5.90	52.88	EP 600' FSL, 980' FV
20,753.1	90.00	0.30	8,140.0	14,981.6	-4,565.1	0.00	0.00	0.00	0.00	BHL 600' FNL, 980' F'

Database:	EDM 5000.1 Single User Db	Local Co-ordinate Reference:	Well Reporter 32-29-2H
Company:	Edge Energy, LLC	TVD Reference:	WELL @ 5400.0usft (Original Well Elev)
Project:	Sec. 4-T10N-R65W	MD Reference:	WELL @ 5400.0usft (Original Well Elev)
Site:	Deporter 4-A	North Reference:	True
Well:	Deporter 32-29-2H	Survey Calculation Method:	Minimum Curvature
Wellbore:	Wellbore #1		
Design:	Design #1 28Mar18 mnh		

Planned Survey									
Measured Depth (usft)	Inclination (°)	Azimuth (°)	Vertical Depth (usft)	+N/-S (usft)	+E/-W (usft)	Map Northing (usft)	Map Easting (usft)	Latitude	Longitude
0.0	0.00	0.00	0.0	0.0	0.0	1,555,844.38	3,227,874.76	40° 51' 22.550 N	104° 40' 34.509 W
100.0	0.00	0.00	100.0	0.0	0.0	1,555,844.38	3,227,874.76	40° 51' 22.550 N	104° 40' 34.509 W
200.0	0.00	0.00	200.0	0.0	0.0	1,555,844.38	3,227,874.76	40° 51' 22.550 N	104° 40' 34.509 W
300.0	0.00	0.00	300.0	0.0	0.0	1,555,844.38	3,227,874.76	40° 51' 22.550 N	104° 40' 34.509 W
400.0	0.00	0.00	400.0	0.0	0.0	1,555,844.38	3,227,874.76	40° 51' 22.550 N	104° 40' 34.509 W
500.0	0.00	0.00	500.0	0.0	0.0	1,555,844.38	3,227,874.76	40° 51' 22.550 N	104° 40' 34.509 W
Start Build 2.00									
600.0	2.00	318.60	600.0	1.3	-1.2	1,555,845.68	3,227,873.60	40° 51' 22.563 N	104° 40' 34.524 W
700.0	4.00	318.60	699.8	5.2	-4.6	1,555,849.58	3,227,870.10	40° 51' 22.601 N	104° 40' 34.569 W
800.0	6.00	318.60	799.5	11.8	-10.4	1,555,856.06	3,227,864.27	40° 51' 22.666 N	104° 40' 34.644 W
900.0	8.00	318.60	898.7	20.9	-18.4	1,555,865.12	3,227,856.13	40° 51' 22.756 N	104° 40' 34.749 W
1,000.0	10.00	318.60	997.5	32.6	-28.8	1,555,876.76	3,227,845.68	40° 51' 22.872 N	104° 40' 34.884 W
1,100.0	12.00	318.60	1,095.6	47.0	-41.4	1,555,890.95	3,227,832.93	40° 51' 23.014 N	104° 40' 35.048 W
1,200.0	14.00	318.60	1,193.1	63.8	-56.3	1,555,907.69	3,227,817.89	40° 51' 23.180 N	104° 40' 35.242 W
1,300.0	16.00	318.60	1,289.6	83.2	-73.4	1,555,926.94	3,227,800.60	40° 51' 23.372 N	104° 40' 35.464 W
1,400.0	18.00	318.60	1,385.3	105.2	-92.7	1,555,948.69	3,227,781.06	40° 51' 23.589 N	104° 40' 35.716 W
1,500.0	20.00	318.60	1,479.8	129.6	-114.3	1,555,972.91	3,227,759.30	40° 51' 23.830 N	104° 40' 35.996 W
1,600.0	22.00	318.60	1,573.2	156.5	-138.0	1,555,999.56	3,227,735.36	40° 51' 24.096 N	104° 40' 36.305 W
1,700.0	24.00	318.60	1,665.2	185.8	-163.8	1,556,028.63	3,227,709.24	40° 51' 24.385 N	104° 40' 36.641 W
1,800.0	26.00	318.60	1,755.8	217.5	-191.7	1,556,060.07	3,227,681.00	40° 51' 24.699 N	104° 40' 37.005 W
1,900.0	28.00	318.60	1,844.9	251.5	-221.8	1,556,093.84	3,227,650.67	40° 51' 25.035 N	104° 40' 37.395 W
2,000.0	30.00	318.60	1,932.4	287.9	-253.8	1,556,129.90	3,227,618.27	40° 51' 25.394 N	104° 40' 37.812 W
2,100.0	32.00	318.60	2,018.1	326.5	-287.9	1,556,168.21	3,227,583.85	40° 51' 25.776 N	104° 40' 38.256 W
2,200.0	34.00	318.60	2,102.0	367.4	-323.9	1,556,208.72	3,227,547.45	40° 51' 26.180 N	104° 40' 38.724 W
2,300.0	36.00	318.60	2,183.9	410.4	-361.8	1,556,251.39	3,227,509.12	40° 51' 26.605 N	104° 40' 39.218 W
2,400.0	38.00	318.60	2,263.7	455.5	-401.6	1,556,296.16	3,227,468.91	40° 51' 27.051 N	104° 40' 39.736 W
2,500.0	40.00	318.60	2,341.4	502.7	-443.3	1,556,342.97	3,227,426.85	40° 51' 27.517 N	104° 40' 40.278 W
2,600.0	42.00	318.60	2,416.9	551.9	-486.6	1,556,391.77	3,227,383.01	40° 51' 28.003 N	104° 40' 40.842 W
2,700.0	44.00	318.60	2,490.0	603.1	-531.7	1,556,442.50	3,227,337.44	40° 51' 28.509 N	104° 40' 41.429 W
2,800.0	46.00	318.60	2,560.8	656.1	-578.5	1,556,495.10	3,227,290.19	40° 51' 29.033 N	104° 40' 42.038 W
2,879.3	47.59	318.60	2,615.0	699.5	-616.7	1,556,538.10	3,227,251.56	40° 51' 29.461 N	104° 40' 42.535 W
Hold 47.59 Inc, 318.6 Az									
2,900.0	47.59	318.60	2,629.0	710.9	-626.8	1,556,549.47	3,227,241.35	40° 51' 29.574 N	104° 40' 42.667 W
3,000.0	47.59	318.60	2,696.5	766.3	-675.7	1,556,604.39	3,227,192.01	40° 51' 30.121 N	104° 40' 43.302 W
3,100.0	47.59	318.60	2,763.9	821.7	-724.5	1,556,659.31	3,227,142.67	40° 51' 30.669 N	104° 40' 43.938 W
3,200.0	47.59	318.60	2,831.3	877.1	-773.3	1,556,714.23	3,227,093.33	40° 51' 31.216 N	104° 40' 44.573 W
3,300.0	47.59	318.60	2,898.8	932.4	-822.1	1,556,769.15	3,227,043.99	40° 51' 31.763 N	104° 40' 45.209 W
3,400.0	47.59	318.60	2,966.2	987.8	-871.0	1,556,824.07	3,226,994.65	40° 51' 32.310 N	104° 40' 45.844 W
3,500.0	47.59	318.60	3,033.7	1,043.2	-919.8	1,556,878.99	3,226,945.31	40° 51' 32.857 N	104° 40' 46.480 W
3,600.0	47.59	318.60	3,101.1	1,098.6	-968.6	1,556,933.92	3,226,895.97	40° 51' 33.404 N	104° 40' 47.115 W
3,700.0	47.59	318.60	3,168.6	1,154.0	-1,017.5	1,556,988.84	3,226,846.63	40° 51' 33.951 N	104° 40' 47.750 W
3,800.0	47.59	318.60	3,236.0	1,209.3	-1,066.3	1,557,043.76	3,226,797.29	40° 51' 34.499 N	104° 40' 48.386 W
3,900.0	47.59	318.60	3,303.5	1,264.7	-1,115.1	1,557,098.68	3,226,747.95	40° 51' 35.046 N	104° 40' 49.021 W
4,000.0	47.59	318.60	3,370.9	1,320.1	-1,163.9	1,557,153.60	3,226,698.62	40° 51' 35.593 N	104° 40' 49.657 W
4,100.0	47.59	318.60	3,438.4	1,375.5	-1,212.8	1,557,208.52	3,226,649.28	40° 51' 36.140 N	104° 40' 50.292 W
4,200.0	47.59	318.60	3,505.8	1,430.8	-1,261.6	1,557,263.44	3,226,599.94	40° 51' 36.687 N	104° 40' 50.928 W
4,300.0	47.59	318.60	3,573.3	1,486.2	-1,310.4	1,557,318.37	3,226,550.60	40° 51' 37.234 N	104° 40' 51.563 W
4,400.0	47.59	318.60	3,640.7	1,541.6	-1,359.2	1,557,373.29	3,226,501.26	40° 51' 37.782 N	104° 40' 52.199 W
4,500.0	47.59	318.60	3,708.2	1,597.0	-1,408.1	1,557,428.21	3,226,451.92	40° 51' 38.329 N	104° 40' 52.834 W
4,600.0	47.59	318.60	3,775.6	1,652.3	-1,456.9	1,557,483.13	3,226,402.58	40° 51' 38.876 N	104° 40' 53.470 W
4,700.0	47.59	318.60	3,843.1	1,707.7	-1,505.7	1,557,538.05	3,226,353.24	40° 51' 39.423 N	104° 40' 54.105 W
4,800.0	47.59	318.60	3,910.5	1,763.1	-1,554.5	1,557,592.97	3,226,303.90	40° 51' 39.970 N	104° 40' 54.741 W
4,900.0	47.59	318.60	3,978.0	1,818.5	-1,603.4	1,557,647.89	3,226,254.56	40° 51' 40.517 N	104° 40' 55.376 W
5,000.0	47.59	318.60	4,045.4	1,873.9	-1,652.2	1,557,702.81	3,226,205.22	40° 51' 41.064 N	104° 40' 56.012 W

Database:	EDM 5000.1 Single User Db	Local Co-ordinate Reference:	Well Reporter 32-29-2H
Company:	Edge Energy, LLC	TVD Reference:	WELL @ 5400.0usft (Original Well Elev)
Project:	Sec. 4-T10N-R65W	MD Reference:	WELL @ 5400.0usft (Original Well Elev)
Site:	Deporter 4-A	North Reference:	True
Well:	Deporter 32-29-2H	Survey Calculation Method:	Minimum Curvature
Wellbore:	Wellbore #1		
Design:	Design #1 28Mar18 mnh		

Planned Survey										
Measured Depth (usft)	Inclination (°)	Azimuth (°)	Vertical Depth (usft)	+N/-S (usft)	+E/-W (usft)	Map Northing (usft)	Map Easting (usft)	Latitude	Longitude	
5,100.0	47.59	318.60	4,112.9	1,929.2	-1,701.0	1,557,757.74	3,226,155.88	40° 51' 41.611 N	104° 40' 56.647 W	
5,200.0	47.59	318.60	4,180.3	1,984.6	-1,749.9	1,557,812.66	3,226,106.55	40° 51' 42.159 N	104° 40' 57.283 W	
5,300.0	47.59	318.60	4,247.8	2,040.0	-1,798.7	1,557,867.58	3,226,057.21	40° 51' 42.706 N	104° 40' 57.918 W	
5,400.0	47.59	318.60	4,315.2	2,095.4	-1,847.5	1,557,922.50	3,226,007.87	40° 51' 43.253 N	104° 40' 58.554 W	
5,500.0	47.59	318.60	4,382.7	2,150.7	-1,896.3	1,557,977.42	3,225,958.53	40° 51' 43.800 N	104° 40' 59.189 W	
5,600.0	47.59	318.60	4,450.1	2,206.1	-1,945.2	1,558,032.34	3,225,909.19	40° 51' 44.347 N	104° 40' 59.825 W	
5,700.0	47.59	318.60	4,517.6	2,261.5	-1,994.0	1,558,087.26	3,225,859.85	40° 51' 44.894 N	104° 41' 0.460 W	
5,800.0	47.59	318.60	4,585.0	2,316.9	-2,042.8	1,558,142.19	3,225,810.51	40° 51' 45.441 N	104° 41' 1.096 W	
5,900.0	47.59	318.60	4,652.4	2,372.3	-2,091.6	1,558,197.11	3,225,761.17	40° 51' 45.989 N	104° 41' 1.731 W	
6,000.0	47.59	318.60	4,719.9	2,427.6	-2,140.5	1,558,252.03	3,225,711.83	40° 51' 46.536 N	104° 41' 2.367 W	
6,100.0	47.59	318.60	4,787.3	2,483.0	-2,189.3	1,558,306.95	3,225,662.49	40° 51' 47.083 N	104° 41' 3.003 W	
6,200.0	47.59	318.60	4,854.8	2,538.4	-2,238.1	1,558,361.87	3,225,613.15	40° 51' 47.630 N	104° 41' 3.638 W	
6,300.0	47.59	318.60	4,922.2	2,593.8	-2,287.0	1,558,416.79	3,225,563.82	40° 51' 48.177 N	104° 41' 4.274 W	
6,400.0	47.59	318.60	4,989.7	2,649.1	-2,335.8	1,558,471.71	3,225,514.48	40° 51' 48.724 N	104° 41' 4.909 W	
6,500.0	47.59	318.60	5,057.1	2,704.5	-2,384.6	1,558,526.64	3,225,465.14	40° 51' 49.271 N	104° 41' 5.545 W	
6,600.0	47.59	318.60	5,124.6	2,759.9	-2,433.4	1,558,581.56	3,225,415.80	40° 51' 49.818 N	104° 41' 6.180 W	
6,700.0	47.59	318.60	5,192.0	2,815.3	-2,482.3	1,558,636.48	3,225,366.46	40° 51' 50.366 N	104° 41' 6.816 W	
6,800.0	47.59	318.60	5,259.5	2,870.7	-2,531.1	1,558,691.40	3,225,317.12	40° 51' 50.913 N	104° 41' 7.451 W	
6,900.0	47.59	318.60	5,326.9	2,926.0	-2,579.9	1,558,746.32	3,225,267.78	40° 51' 51.460 N	104° 41' 8.087 W	
7,000.0	47.59	318.60	5,394.4	2,981.4	-2,628.7	1,558,801.24	3,225,218.44	40° 51' 52.007 N	104° 41' 8.722 W	
7,100.0	47.59	318.60	5,461.8	3,036.8	-2,677.6	1,558,856.16	3,225,169.10	40° 51' 52.554 N	104° 41' 9.358 W	
7,200.0	47.59	318.60	5,529.3	3,092.2	-2,726.4	1,558,911.08	3,225,119.76	40° 51' 53.101 N	104° 41' 9.994 W	
7,300.0	47.59	318.60	5,596.7	3,147.5	-2,775.2	1,558,966.01	3,225,070.42	40° 51' 53.648 N	104° 41' 10.629 W	
7,400.0	47.59	318.60	5,664.2	3,202.9	-2,824.0	1,559,020.93	3,225,021.08	40° 51' 54.195 N	104° 41' 11.265 W	
7,500.0	47.59	318.60	5,731.6	3,258.3	-2,872.9	1,559,075.85	3,224,971.75	40° 51' 54.742 N	104° 41' 11.900 W	
7,600.0	47.59	318.60	5,799.1	3,313.7	-2,921.7	1,559,130.77	3,224,922.41	40° 51' 55.290 N	104° 41' 12.536 W	
7,700.0	47.59	318.60	5,866.5	3,369.0	-2,970.5	1,559,185.69	3,224,873.07	40° 51' 55.837 N	104° 41' 13.171 W	
7,800.0	47.59	318.60	5,934.0	3,424.4	-3,019.4	1,559,240.61	3,224,823.73	40° 51' 56.384 N	104° 41' 13.807 W	
7,900.0	47.59	318.60	6,001.4	3,479.8	-3,068.2	1,559,295.53	3,224,774.39	40° 51' 56.931 N	104° 41' 14.443 W	
8,000.0	47.59	318.60	6,068.9	3,535.2	-3,117.0	1,559,350.46	3,224,725.05	40° 51' 57.478 N	104° 41' 15.078 W	
8,100.0	47.59	318.60	6,136.3	3,590.6	-3,165.8	1,559,405.38	3,224,675.71	40° 51' 58.025 N	104° 41' 15.714 W	
8,200.0	47.59	318.60	6,203.8	3,645.9	-3,214.7	1,559,460.30	3,224,626.37	40° 51' 58.572 N	104° 41' 16.349 W	
8,300.0	47.59	318.60	6,271.2	3,701.3	-3,263.5	1,559,515.22	3,224,577.03	40° 51' 59.119 N	104° 41' 16.985 W	
8,400.0	47.59	318.60	6,338.7	3,756.7	-3,312.3	1,559,570.14	3,224,527.69	40° 51' 59.666 N	104° 41' 17.621 W	
8,500.0	47.59	318.60	6,406.1	3,812.1	-3,361.1	1,559,625.06	3,224,478.35	40° 52' 0.213 N	104° 41' 18.256 W	
8,600.0	47.59	318.60	6,473.5	3,867.4	-3,410.0	1,559,679.98	3,224,429.01	40° 52' 0.761 N	104° 41' 18.892 W	
8,700.0	47.59	318.60	6,541.0	3,922.8	-3,458.8	1,559,734.91	3,224,379.68	40° 52' 1.308 N	104° 41' 19.527 W	
8,800.0	47.59	318.60	6,608.4	3,978.2	-3,507.6	1,559,789.83	3,224,330.34	40° 52' 1.855 N	104° 41' 20.163 W	
8,900.0	47.59	318.60	6,675.9	4,033.6	-3,556.4	1,559,844.75	3,224,281.00	40° 52' 2.402 N	104° 41' 20.799 W	
9,000.0	47.59	318.60	6,743.3	4,089.0	-3,605.3	1,559,899.67	3,224,231.66	40° 52' 2.949 N	104° 41' 21.434 W	
9,100.0	47.59	318.60	6,810.8	4,144.3	-3,654.1	1,559,954.59	3,224,182.32	40° 52' 3.496 N	104° 41' 22.070 W	
9,200.0	47.59	318.60	6,878.2	4,199.7	-3,702.9	1,560,009.51	3,224,132.98	40° 52' 4.043 N	104° 41' 22.706 W	
9,300.0	47.59	318.60	6,945.7	4,255.1	-3,751.8	1,560,064.43	3,224,083.64	40° 52' 4.590 N	104° 41' 23.341 W	
9,400.0	47.59	318.60	7,013.1	4,310.5	-3,800.6	1,560,119.35	3,224,034.30	40° 52' 5.137 N	104° 41' 23.977 W	
9,500.0	47.59	318.60	7,080.6	4,365.8	-3,849.4	1,560,174.28	3,223,984.96	40° 52' 5.684 N	104° 41' 24.612 W	
9,600.0	47.59	318.60	7,148.0	4,421.2	-3,898.2	1,560,229.20	3,223,935.62	40° 52' 6.232 N	104° 41' 25.248 W	
9,700.0	47.59	318.60	7,215.5	4,476.6	-3,947.1	1,560,284.12	3,223,886.28	40° 52' 6.779 N	104° 41' 25.884 W	
9,800.0	47.59	318.60	7,282.9	4,532.0	-3,995.9	1,560,339.04	3,223,836.95	40° 52' 7.326 N	104° 41' 26.519 W	
9,900.0	47.59	318.60	7,350.4	4,587.3	-4,044.7	1,560,393.96	3,223,787.61	40° 52' 7.873 N	104° 41' 27.155 W	
10,000.0	47.59	318.60	7,417.8	4,642.7	-4,093.5	1,560,448.88	3,223,738.27	40° 52' 8.420 N	104° 41' 27.791 W	
10,100.0	47.59	318.60	7,485.3	4,698.1	-4,142.4	1,560,503.80	3,223,688.93	40° 52' 8.967 N	104° 41' 28.426 W	
10,200.0	47.59	318.60	7,552.7	4,753.5	-4,191.2	1,560,558.73	3,223,639.59	40° 52' 9.514 N	104° 41' 29.062 W	
10,300.0	47.59	318.60	7,620.2	4,808.9	-4,240.0	1,560,613.65	3,223,590.25	40° 52' 10.061 N	104° 41' 29.698 W	
10,400.0	47.59	318.60	7,687.6	4,864.2	-4,288.9	1,560,668.57	3,223,540.91	40° 52' 10.608 N	104° 41' 30.333 W	
10,500.0	47.59	318.60	7,755.1	4,919.6	-4,337.7	1,560,723.49	3,223,491.57	40° 52' 11.155 N	104° 41' 30.969 W	



Planning Report - Geographic

Database:	EDM 5000.1 Single User Db	Local Co-ordinate Reference:	Well Reporter 32-29-2H
Company:	Edge Energy, LLC	TVD Reference:	WELL @ 5400.0usft (Original Well Elev)
Project:	Sec. 4-T10N-R65W	MD Reference:	WELL @ 5400.0usft (Original Well Elev)
Site:	Deporter 4-A	North Reference:	True
Well:	Deporter 32-29-2H	Survey Calculation Method:	Minimum Curvature
Wellbore:	Wellbore #1		
Design:	Design #1 28Mar18 mnh		

Planned Survey										
Measured Depth (usft)	Inclination (°)	Azimuth (°)	Vertical Depth (usft)	+N/-S (usft)	+E/-W (usft)	Map Northing (usft)	Map Easting (usft)	Latitude	Longitude	
10,600.0	47.59	318.60	7,822.5	4,975.0	-4,386.5	1,560,778.41	3,223,442.23	40° 52' 11.702 N	104° 41' 31.605 W	
10,685.5	47.59	318.60	7,880.2	5,022.3	-4,428.2	1,560,825.36	3,223,400.06	40° 52' 12.170 N	104° 41' 32.148 W	
KOP 8/100										
10,700.0	48.29	319.84	7,889.9	5,030.5	-4,435.3	1,560,833.46	3,223,392.94	40° 52' 12.251 N	104° 41' 32.240 W	
10,800.0	53.49	327.68	7,953.0	5,093.1	-4,480.9	1,560,895.62	3,223,346.73	40° 52' 12.869 N	104° 41' 32.834 W	
10,900.0	59.14	334.50	8,008.5	5,165.9	-4,520.9	1,560,968.07	3,223,306.03	40° 52' 13.589 N	104° 41' 33.355 W	
11,000.0	65.10	340.54	8,055.3	5,247.5	-4,554.6	1,561,049.39	3,223,271.64	40° 52' 14.395 N	104° 41' 33.793 W	
11,100.0	71.28	346.02	8,092.4	5,336.4	-4,581.2	1,561,138.00	3,223,244.22	40° 52' 15.273 N	104° 41' 34.139 W	
11,200.0	77.61	351.10	8,119.2	5,430.8	-4,600.2	1,561,232.17	3,223,224.31	40° 52' 16.205 N	104° 41' 34.387 W	
11,300.0	84.03	355.94	8,135.2	5,528.8	-4,611.3	1,561,330.07	3,223,212.30	40° 52' 17.174 N	104° 41' 34.532 W	
11,392.3	90.00	0.30	8,140.0	5,620.9	-4,614.3	1,561,422.16	3,223,208.43	40° 52' 18.084 N	104° 41' 34.571 W	
EP 90 Inc, .3 Az										
11,400.0	90.00	0.30	8,140.0	5,628.5	-4,614.3	1,561,429.80	3,223,208.40	40° 52' 18.159 N	104° 41' 34.571 W	
11,500.0	90.00	0.30	8,140.0	5,728.5	-4,613.7	1,561,529.80	3,223,208.00	40° 52' 19.147 N	104° 41' 34.564 W	
11,600.0	90.00	0.30	8,140.0	5,828.5	-4,613.2	1,561,629.80	3,223,207.59	40° 52' 20.135 N	104° 41' 34.558 W	
11,700.0	90.00	0.30	8,140.0	5,928.5	-4,612.7	1,561,729.80	3,223,207.19	40° 52' 21.124 N	104° 41' 34.551 W	
11,800.0	90.00	0.30	8,140.0	6,028.5	-4,612.2	1,561,829.80	3,223,206.79	40° 52' 22.112 N	104° 41' 34.544 W	
11,900.0	90.00	0.30	8,140.0	6,128.5	-4,611.6	1,561,929.80	3,223,206.38	40° 52' 23.100 N	104° 41' 34.538 W	
12,000.0	90.00	0.30	8,140.0	6,228.5	-4,611.1	1,562,029.80	3,223,205.98	40° 52' 24.088 N	104° 41' 34.531 W	
12,100.0	90.00	0.30	8,140.0	6,328.5	-4,610.6	1,562,129.80	3,223,205.58	40° 52' 25.076 N	104° 41' 34.525 W	
12,200.0	90.00	0.30	8,140.0	6,428.5	-4,610.1	1,562,229.79	3,223,205.17	40° 52' 26.064 N	104° 41' 34.518 W	
12,300.0	90.00	0.30	8,140.0	6,528.5	-4,609.5	1,562,329.79	3,223,204.77	40° 52' 27.052 N	104° 41' 34.511 W	
12,400.0	90.00	0.30	8,140.0	6,628.5	-4,609.0	1,562,429.79	3,223,204.37	40° 52' 28.040 N	104° 41' 34.505 W	
12,500.0	90.00	0.30	8,140.0	6,728.5	-4,608.5	1,562,529.79	3,223,203.96	40° 52' 29.028 N	104° 41' 34.498 W	
12,600.0	90.00	0.30	8,140.0	6,828.5	-4,608.0	1,562,629.79	3,223,203.56	40° 52' 30.016 N	104° 41' 34.492 W	
12,700.0	90.00	0.30	8,140.0	6,928.5	-4,607.4	1,562,729.79	3,223,203.16	40° 52' 31.004 N	104° 41' 34.485 W	
12,800.0	90.00	0.30	8,140.0	7,028.5	-4,606.9	1,562,829.79	3,223,202.75	40° 52' 31.992 N	104° 41' 34.478 W	
12,900.0	90.00	0.30	8,140.0	7,128.5	-4,606.4	1,562,929.79	3,223,202.35	40° 52' 32.980 N	104° 41' 34.472 W	
13,000.0	90.00	0.30	8,140.0	7,228.5	-4,605.9	1,563,029.79	3,223,201.95	40° 52' 33.968 N	104° 41' 34.465 W	
13,100.0	90.00	0.30	8,140.0	7,328.5	-4,605.3	1,563,129.78	3,223,201.54	40° 52' 34.956 N	104° 41' 34.459 W	
13,200.0	90.00	0.30	8,140.0	7,428.5	-4,604.8	1,563,229.78	3,223,201.14	40° 52' 35.944 N	104° 41' 34.452 W	
13,300.0	90.00	0.30	8,140.0	7,528.5	-4,604.3	1,563,329.78	3,223,200.74	40° 52' 36.932 N	104° 41' 34.446 W	
13,400.0	90.00	0.30	8,140.0	7,628.5	-4,603.8	1,563,429.78	3,223,200.33	40° 52' 37.920 N	104° 41' 34.439 W	
13,500.0	90.00	0.30	8,140.0	7,728.5	-4,603.2	1,563,529.78	3,223,199.93	40° 52' 38.908 N	104° 41' 34.432 W	
13,600.0	90.00	0.30	8,140.0	7,828.5	-4,602.7	1,563,629.78	3,223,199.53	40° 52' 39.897 N	104° 41' 34.426 W	
13,700.0	90.00	0.30	8,140.0	7,928.5	-4,602.2	1,563,729.78	3,223,199.12	40° 52' 40.885 N	104° 41' 34.419 W	
13,800.0	90.00	0.30	8,140.0	8,028.5	-4,601.7	1,563,829.78	3,223,198.72	40° 52' 41.873 N	104° 41' 34.413 W	
13,900.0	90.00	0.30	8,140.0	8,128.5	-4,601.1	1,563,929.78	3,223,198.32	40° 52' 42.861 N	104° 41' 34.406 W	
14,000.0	90.00	0.30	8,140.0	8,228.5	-4,600.6	1,564,029.78	3,223,197.91	40° 52' 43.849 N	104° 41' 34.399 W	
14,100.0	90.00	0.30	8,140.0	8,328.5	-4,600.1	1,564,129.77	3,223,197.51	40° 52' 44.837 N	104° 41' 34.393 W	
14,200.0	90.00	0.30	8,140.0	8,428.5	-4,599.6	1,564,229.77	3,223,197.11	40° 52' 45.825 N	104° 41' 34.386 W	
14,300.0	90.00	0.30	8,140.0	8,528.5	-4,599.0	1,564,329.77	3,223,196.70	40° 52' 46.813 N	104° 41' 34.380 W	
14,400.0	90.00	0.30	8,140.0	8,628.5	-4,598.5	1,564,429.77	3,223,196.30	40° 52' 47.801 N	104° 41' 34.373 W	
14,500.0	90.00	0.30	8,140.0	8,728.5	-4,598.0	1,564,529.77	3,223,195.90	40° 52' 48.789 N	104° 41' 34.366 W	
14,600.0	90.00	0.30	8,140.0	8,828.5	-4,597.5	1,564,629.77	3,223,195.49	40° 52' 49.777 N	104° 41' 34.360 W	
14,700.0	90.00	0.30	8,140.0	8,928.5	-4,596.9	1,564,729.77	3,223,195.09	40° 52' 50.765 N	104° 41' 34.353 W	
14,800.0	90.00	0.30	8,140.0	9,028.5	-4,596.4	1,564,829.77	3,223,194.69	40° 52' 51.753 N	104° 41' 34.347 W	
14,900.0	90.00	0.30	8,140.0	9,128.5	-4,595.9	1,564,929.77	3,223,194.28	40° 52' 52.741 N	104° 41' 34.340 W	
15,000.0	90.00	0.30	8,140.0	9,228.5	-4,595.4	1,565,029.77	3,223,193.88	40° 52' 53.729 N	104° 41' 34.333 W	
15,100.0	90.00	0.30	8,140.0	9,328.5	-4,594.8	1,565,129.76	3,223,193.48	40° 52' 54.717 N	104° 41' 34.327 W	
15,200.0	90.00	0.30	8,140.0	9,428.5	-4,594.3	1,565,229.76	3,223,193.07	40° 52' 55.705 N	104° 41' 34.320 W	
15,300.0	90.00	0.30	8,140.0	9,528.5	-4,593.8	1,565,329.76	3,223,192.67	40° 52' 56.693 N	104° 41' 34.314 W	
15,400.0	90.00	0.30	8,140.0	9,628.5	-4,593.3	1,565,429.76	3,223,192.27	40° 52' 57.681 N	104° 41' 34.307 W	
15,500.0	90.00	0.30	8,140.0	9,728.5	-4,592.7	1,565,529.76	3,223,191.86	40° 52' 58.670 N	104° 41' 34.300 W	

Database:	EDM 5000.1 Single User Db	Local Co-ordinate Reference:	Well Reporter 32-29-2H
Company:	Edge Energy, LLC	TVD Reference:	WELL @ 5400.0usft (Original Well Elev)
Project:	Sec. 4-T10N-R65W	MD Reference:	WELL @ 5400.0usft (Original Well Elev)
Site:	Deporter 4-A	North Reference:	True
Well:	Deporter 32-29-2H	Survey Calculation Method:	Minimum Curvature
Wellbore:	Wellbore #1		
Design:	Design #1 28Mar18 mnh		

Planned Survey										
Measured			Vertical			Map		Map		
Depth (usft)	Inclination (°)	Azimuth (°)	Depth (usft)	+N/-S (usft)	+E/-W (usft)	Northing (usft)	Easting (usft)	Latitude	Longitude	
15,600.0	90.00	0.30	8,140.0	9,828.5	-4,592.2	1,565,629.76	3,223,191.46	40° 52' 59.658 N	104° 41' 34.294 W	
15,700.0	90.00	0.30	8,140.0	9,928.5	-4,591.7	1,565,729.76	3,223,191.06	40° 53' 0.646 N	104° 41' 34.287 W	
15,800.0	90.00	0.30	8,140.0	10,028.5	-4,591.1	1,565,829.76	3,223,190.65	40° 53' 1.634 N	104° 41' 34.281 W	
15,900.0	90.00	0.30	8,140.0	10,128.5	-4,590.6	1,565,929.75	3,223,190.25	40° 53' 2.622 N	104° 41' 34.274 W	
16,000.0	90.00	0.30	8,140.0	10,228.5	-4,590.1	1,566,029.75	3,223,189.85	40° 53' 3.610 N	104° 41' 34.267 W	
16,100.0	90.00	0.30	8,140.0	10,328.4	-4,589.6	1,566,129.74	3,223,189.44	40° 53' 4.598 N	104° 41' 34.261 W	
16,200.0	90.00	0.30	8,140.0	10,428.4	-4,589.0	1,566,229.74	3,223,189.04	40° 53' 5.586 N	104° 41' 34.254 W	
16,300.0	90.00	0.30	8,140.0	10,528.4	-4,588.5	1,566,329.74	3,223,188.64	40° 53' 6.574 N	104° 41' 34.248 W	
16,400.0	90.00	0.30	8,140.0	10,628.4	-4,588.0	1,566,429.74	3,223,188.23	40° 53' 7.562 N	104° 41' 34.241 W	
16,500.0	90.00	0.30	8,140.0	10,728.4	-4,587.5	1,566,529.74	3,223,187.83	40° 53' 8.550 N	104° 41' 34.234 W	
16,600.0	90.00	0.30	8,140.0	10,828.4	-4,586.9	1,566,629.74	3,223,187.43	40° 53' 9.538 N	104° 41' 34.228 W	
16,700.0	90.00	0.30	8,140.0	10,928.4	-4,586.4	1,566,729.74	3,223,187.02	40° 53' 10.526 N	104° 41' 34.221 W	
16,800.0	90.00	0.30	8,140.0	11,028.4	-4,585.9	1,566,829.74	3,223,186.62	40° 53' 11.514 N	104° 41' 34.215 W	
16,900.0	90.00	0.30	8,140.0	11,128.4	-4,585.4	1,566,929.74	3,223,186.22	40° 53' 12.502 N	104° 41' 34.208 W	
17,000.0	90.00	0.30	8,140.0	11,228.4	-4,584.8	1,567,029.74	3,223,185.81	40° 53' 13.490 N	104° 41' 34.201 W	
17,100.0	90.00	0.30	8,140.0	11,328.4	-4,584.3	1,567,129.73	3,223,185.41	40° 53' 14.478 N	104° 41' 34.195 W	
17,200.0	90.00	0.30	8,140.0	11,428.4	-4,583.8	1,567,229.73	3,223,185.00	40° 53' 15.466 N	104° 41' 34.188 W	
17,300.0	90.00	0.30	8,140.0	11,528.4	-4,583.3	1,567,329.73	3,223,184.60	40° 53' 16.454 N	104° 41' 34.182 W	
17,400.0	90.00	0.30	8,140.0	11,628.4	-4,582.7	1,567,429.73	3,223,184.20	40° 53' 17.442 N	104° 41' 34.175 W	
17,500.0	90.00	0.30	8,140.0	11,728.4	-4,582.2	1,567,529.73	3,223,183.79	40° 53' 18.431 N	104° 41' 34.168 W	
17,600.0	90.00	0.30	8,140.0	11,828.4	-4,581.7	1,567,629.73	3,223,183.39	40° 53' 19.419 N	104° 41' 34.162 W	
17,700.0	90.00	0.30	8,140.0	11,928.4	-4,581.2	1,567,729.73	3,223,182.99	40° 53' 20.407 N	104° 41' 34.155 W	
17,800.0	90.00	0.30	8,140.0	12,028.4	-4,580.6	1,567,829.73	3,223,182.58	40° 53' 21.395 N	104° 41' 34.149 W	
17,900.0	90.00	0.30	8,140.0	12,128.4	-4,580.1	1,567,929.73	3,223,182.18	40° 53' 22.383 N	104° 41' 34.142 W	
18,000.0	90.00	0.30	8,140.0	12,228.4	-4,579.6	1,568,029.73	3,223,181.78	40° 53' 23.371 N	104° 41' 34.135 W	
18,100.0	90.00	0.30	8,140.0	12,328.4	-4,579.1	1,568,129.72	3,223,181.37	40° 53' 24.359 N	104° 41' 34.129 W	
18,200.0	90.00	0.30	8,140.0	12,428.4	-4,578.5	1,568,229.72	3,223,180.97	40° 53' 25.347 N	104° 41' 34.122 W	
18,300.0	90.00	0.30	8,140.0	12,528.4	-4,578.0	1,568,329.72	3,223,180.57	40° 53' 26.335 N	104° 41' 34.116 W	
18,400.0	90.00	0.30	8,140.0	12,628.4	-4,577.5	1,568,429.72	3,223,180.16	40° 53' 27.323 N	104° 41' 34.109 W	
18,500.0	90.00	0.30	8,140.0	12,728.4	-4,577.0	1,568,529.72	3,223,179.76	40° 53' 28.311 N	104° 41' 34.102 W	
18,600.0	90.00	0.30	8,140.0	12,828.4	-4,576.4	1,568,629.72	3,223,179.36	40° 53' 29.299 N	104° 41' 34.096 W	
18,700.0	90.00	0.30	8,140.0	12,928.4	-4,575.9	1,568,729.72	3,223,178.95	40° 53' 30.287 N	104° 41' 34.089 W	
18,800.0	90.00	0.30	8,140.0	13,028.4	-4,575.4	1,568,829.72	3,223,178.55	40° 53' 31.275 N	104° 41' 34.083 W	
18,900.0	90.00	0.30	8,140.0	13,128.4	-4,574.9	1,568,929.72	3,223,178.15	40° 53' 32.263 N	104° 41' 34.076 W	
19,000.0	90.00	0.30	8,140.0	13,228.4	-4,574.3	1,569,029.72	3,223,177.74	40° 53' 33.251 N	104° 41' 34.069 W	
19,100.0	90.00	0.30	8,140.0	13,328.4	-4,573.8	1,569,129.71	3,223,177.34	40° 53' 34.239 N	104° 41' 34.063 W	
19,200.0	90.00	0.30	8,140.0	13,428.4	-4,573.3	1,569,229.71	3,223,176.94	40° 53' 35.227 N	104° 41' 34.056 W	
19,300.0	90.00	0.30	8,140.0	13,528.4	-4,572.8	1,569,329.71	3,223,176.53	40° 53' 36.215 N	104° 41' 34.050 W	
19,400.0	90.00	0.30	8,140.0	13,628.4	-4,572.2	1,569,429.71	3,223,176.13	40° 53' 37.203 N	104° 41' 34.043 W	
19,500.0	90.00	0.30	8,140.0	13,728.4	-4,571.7	1,569,529.71	3,223,175.73	40° 53' 38.191 N	104° 41' 34.036 W	
19,600.0	90.00	0.30	8,140.0	13,828.4	-4,571.2	1,569,629.71	3,223,175.32	40° 53' 39.180 N	104° 41' 34.030 W	
19,700.0	90.00	0.30	8,140.0	13,928.4	-4,570.7	1,569,729.71	3,223,174.92	40° 53' 40.168 N	104° 41' 34.023 W	
19,800.0	90.00	0.30	8,140.0	14,028.4	-4,570.1	1,569,829.71	3,223,174.52	40° 53' 41.156 N	104° 41' 34.017 W	
19,900.0	90.00	0.30	8,140.0	14,128.4	-4,569.6	1,569,929.71	3,223,174.11	40° 53' 42.144 N	104° 41' 34.010 W	
20,000.0	90.00	0.30	8,140.0	14,228.4	-4,569.1	1,570,029.71	3,223,173.71	40° 53' 43.132 N	104° 41' 34.003 W	
20,100.0	90.00	0.30	8,140.0	14,328.4	-4,568.6	1,570,129.70	3,223,173.31	40° 53' 44.120 N	104° 41' 33.997 W	
20,200.0	90.00	0.30	8,140.0	14,428.4	-4,568.0	1,570,229.70	3,223,172.90	40° 53' 45.108 N	104° 41' 33.990 W	
20,300.0	90.00	0.30	8,140.0	14,528.4	-4,567.5	1,570,329.70	3,223,172.50	40° 53' 46.096 N	104° 41' 33.984 W	
20,400.0	90.00	0.30	8,140.0	14,628.4	-4,567.0	1,570,429.70	3,223,172.10	40° 53' 47.084 N	104° 41' 33.977 W	
20,500.0	90.00	0.30	8,140.0	14,728.4	-4,566.4	1,570,529.70	3,223,171.69	40° 53' 48.072 N	104° 41' 33.970 W	
20,600.0	90.00	0.30	8,140.0	14,828.4	-4,565.9	1,570,629.70	3,223,171.29	40° 53' 49.060 N	104° 41' 33.964 W	
20,700.0	90.00	0.30	8,140.0	14,928.4	-4,565.4	1,570,729.70	3,223,170.89	40° 53' 50.048 N	104° 41' 33.957 W	
20,753.1	90.00	0.30	8,140.0	14,981.6	-4,565.1	1,570,782.88	3,223,170.67	40° 53' 50.573 N	104° 41' 33.954 W	
TD at 20753.1										

Database:	EDM 5000.1 Single User Db	Local Co-ordinate Reference:	Well Deporter 32-29-2H
Company:	Edge Energy, LLC	TVD Reference:	WELL @ 5400.0usft (Original Well Elev)
Project:	Sec. 4-T10N-R65W	MD Reference:	WELL @ 5400.0usft (Original Well Elev)
Site:	Deporter 4-A	North Reference:	True
Well:	Deporter 32-29-2H	Survey Calculation Method:	Minimum Curvature
Wellbore:	Wellbore #1		
Design:	Design #1 28Mar18 mnh		

Design Targets										
Target Name - hit/miss target - Shape	Dip Angle (°)	Dip Dir. (°)	TVD (usft)	+N/-S (usft)	+E/-W (usft)	Northing (usft)	Easting (usft)	Latitude	Longitude	
SHL 260' FSL, 200' FWL - plan hits target center - Point	0.00	0.00	0.0	0.0	0.0	1,555,844.38	3,227,874.76	40° 51' 22.550 N	104° 40' 34.509 W	
EP 600' FSL, 980' FWL - plan hits target center - Point	0.00	0.00	8,140.0	5,620.9	-4,614.3	1,561,422.16	3,223,208.43	40° 52' 18.084 N	104° 41' 34.571 W	
BHL 600' FNL, 980' FWL - plan hits target center - Point	0.00	0.00	8,140.0	14,981.6	-4,565.1	1,570,782.88	3,223,170.67	40° 53' 50.573 N	104° 41' 33.954 W	

Plan Annotations					
Measured Depth (usft)	Vertical Depth (usft)	Local Coordinates			
		+N/-S (usft)	+E/-W (usft)	Comment	
500.0	500.0	0.0	0.0	Start Build 2.00	
2,879.3	2,615.0	699.5	-616.7	Hold 47.59 Inc, 318.6 Az	
10,685.5	7,880.2	5,022.3	-4,428.2	KOP 8/100	
11,392.3	8,140.0	5,620.9	-4,614.3	EP 90 Inc, .3 Az	
20,753.1	8,140.0	14,981.6	-4,565.1	TD at 20753.1	