



Edge Energy, LLC

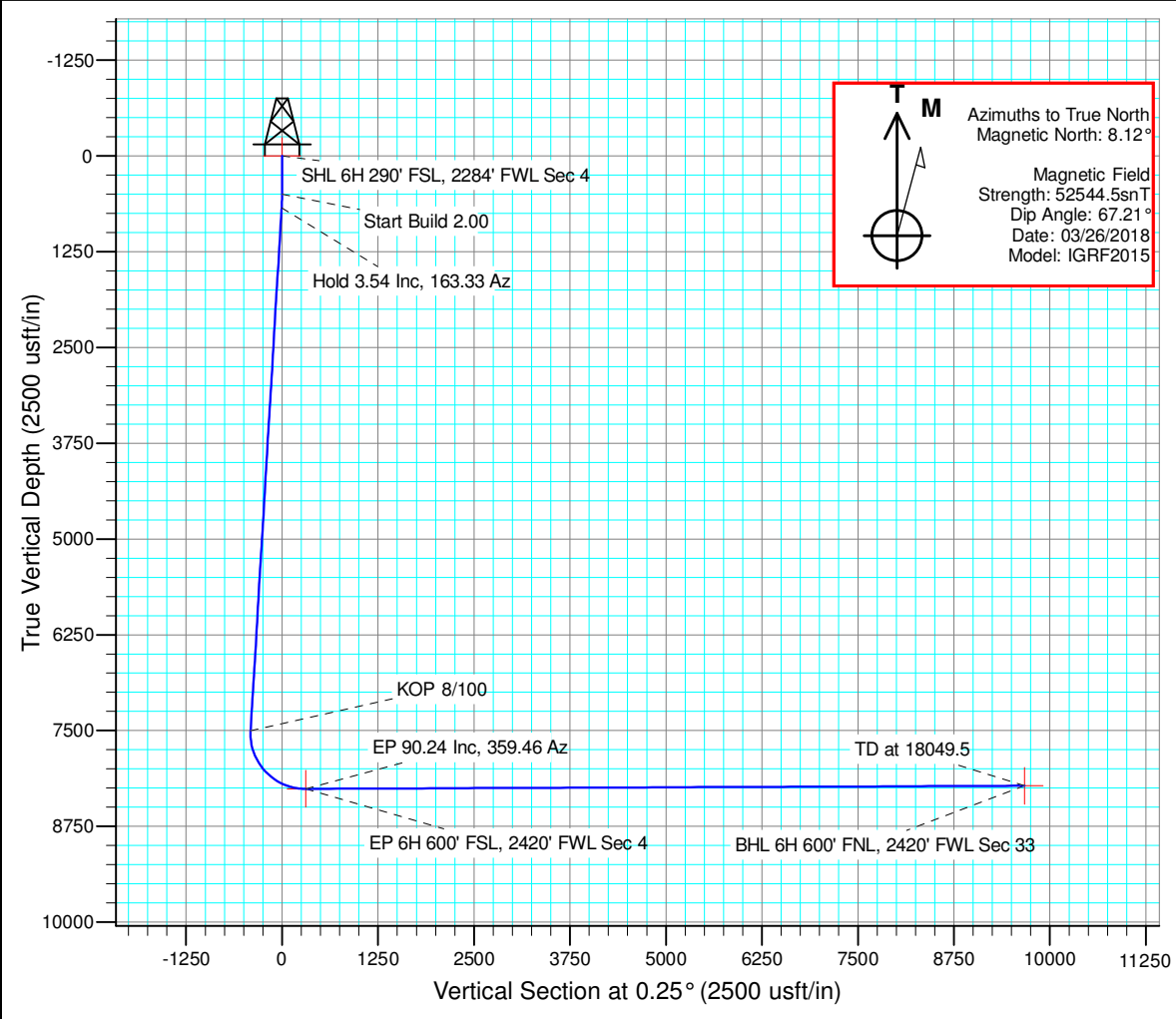
Well Name: <b>Deporter 4-33-6H</b>	Project Name: <b>Sec. 4-T10N-R65W</b>	Pad Name: <b>Deporter 4-B</b>
---------------------------------------	--	----------------------------------

ANNOTATIONS

TVD	MD	Inc	Azi	+N/-S	+E/-W	VSection	Departure	Annotation
500.0	500.0	0.00	0.00	0.0	0.0	0.0	0.0	Start Build 2.00
676.9	677.0	3.54	163.33	-5.2	1.6	-5.2	5.5	Hold 3.54 Inc, 163.33 Az
7502.4	7515.6	3.54	163.33	-409.7	122.7	-409.2	427.7	KOP 8/100
8261.0	8686.2	90.24	359.46	308.4	129.0	308.9	1149.4	EP 90.24 Inc, 359.46 Az
8221.0	18049.5	90.24	359.46	9671.2	41.6	9671.3	10512.7	TD at 18049.5

DESIGN TARGET DETAILS

Name	TVD	+N/-S	+E/-W	Northing	Easting	Latitude	Longitude
SHL 6H 290' FSL, 2284' FWL Sec 4	0.0	0.0	0.0	1555868.26	3229958.31	40° 51' 22.594 N	104° 40' 7.393 W
BHL 6H 600' FNL, 2420' FWL Sec 33	8221.0	9671.2	41.6	1565539.44	3229909.22	40° 52' 58.152 N	104° 40' 6.852 W
EP 6H 600' FSL, 2420' FWL Sec 4	8261.0	308.4	129.0	1556177.85	3230084.46	40° 51' 25.641 N	104° 40' 5.714 W Point

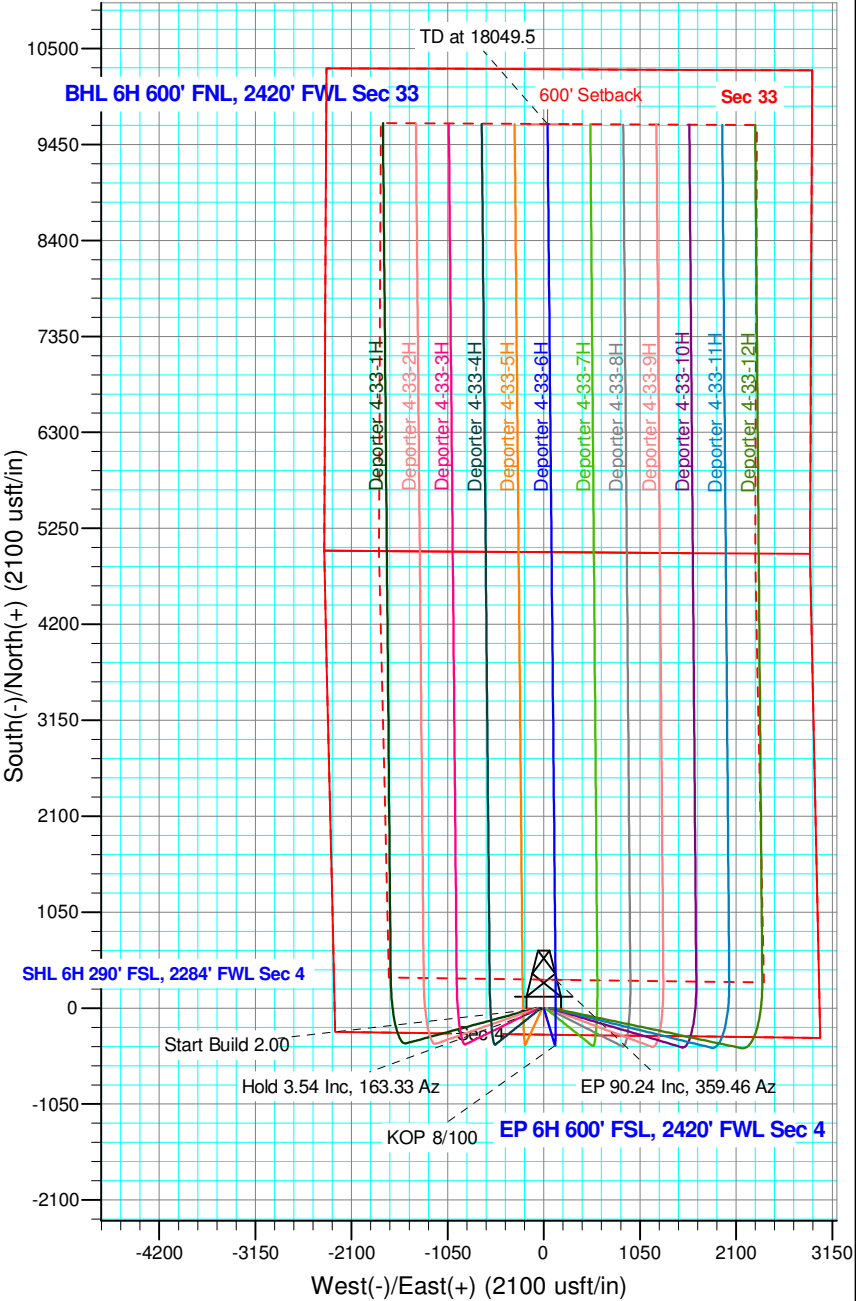


Geodetic Datum:

North American Datum 1983  
US State Plane 1983, Colorado Northern Zone

Elevation:

Ground Elevation: 5396.0  
WELL @ 5411.0usft (Original Well Elev)





## **Edge Energy, LLC**

**Sec. 4-T10N-R65W**

**Deporter 4-B**

**Deporter 4-33-6H**

**Wellbore #1**

**Plan: Design #1 26Mar18 mnh**

## **Standard Planning Report - Geographic**

**26 March, 2018**

<b>Database:</b>	EDM 5000.1 Single User Db	<b>Local Co-ordinate Reference:</b>	Well Deporter 4-33-6H
<b>Company:</b>	Edge Energy, LLC	<b>TVD Reference:</b>	WELL @ 5411.0usft (Original Well Elev)
<b>Project:</b>	Sec. 4-T10N-R65W	<b>MD Reference:</b>	WELL @ 5411.0usft (Original Well Elev)
<b>Site:</b>	Deporter 4-B	<b>North Reference:</b>	True
<b>Well:</b>	Deporter 4-33-6H	<b>Survey Calculation Method:</b>	Minimum Curvature
<b>Wellbore:</b>	Wellbore #1		
<b>Design:</b>	Design #1 26Mar18 mnh		

<b>Project</b>	Sec. 4-T10N-R65W, Weld County, CO		
<b>Map System:</b>	US State Plane 1983	<b>System Datum:</b>	Mean Sea Level
<b>Geo Datum:</b>	North American Datum 1983		
<b>Map Zone:</b>	Colorado Northern Zone		

Site		Deporter 4-B			
Site Position:		Northing:	1,555,868.53 usft	Latitude:	40° 51' 22.603 N
From:	Map	Easting:	3,229,883.39 usft	Longitude:	104° 40' 8.368 W
Position Uncertainty:	0.0 usft	Slot Radius:	13-3/16 "	Grid Convergence:	0.54

Well	Deporter 4-33-6H					
Well Position	+N/-S	0.0 usft	Northing:	1,555,868.26 usft	Latitude:	40° 51' 22.594 N
	+E/-W	0.0 usft	Easting:	3,229,958.31 usft	Longitude:	104° 40' 7.393 W
Position Uncertainty		0.0 usft	Wellhead Elevation:		Ground Level:	5,396.0 usft

<b>Wellbore</b>	Wellbore #1				
<b>Magnetics</b>	<b>Model Name</b>	<b>Sample Date</b>	<b>Declination (°)</b>	<b>Dip Angle (°)</b>	<b>Field Strength (nT)</b>
	IGRF2015	03/26/18	8.12	67.21	52,544

<b>Design</b>	Design #1 26Mar18 mnh			
<b>Audit Notes:</b>				
<b>Version:</b>	<b>Phase:</b>	PLAN	<b>Tie On Depth:</b>	0.0
<b>Vertical Section:</b>	<b>Depth From (TVD) (usft)</b>	<b>+N/-S (usft)</b>	<b>+E/-W (usft)</b>	<b>Direction (°)</b>
	0.0	0.0	0.0	0.25

<b>Plan Sections</b>										
Measured Depth (usft)	Inclination (°)	Azimuth (°)	Vertical Depth (usft)	+N/-S (usft)	+E/-W (usft)	Dogleg Rate (°/100usft)	Build Rate (°/100usft)	Turn Rate (°/100usft)	TFO (°)	Target
0.0	0.00	0.00	0.0	0.0	0.0	0.00	0.00	0.00	0.00	
500.0	0.00	0.00	500.0	0.0	0.0	0.00	0.00	0.00	0.00	
677.0	3.54	163.33	676.9	-5.2	1.6	2.00	2.00	0.00	163.33	
7,515.6	3.54	163.33	7,502.4	-409.7	122.7	0.00	0.00	0.00	0.00	
8,686.2	90.24	359.46	8,261.0	308.4	129.0	8.00	7.41	-14.00	-163.83	EP 6H 600' FSL, 242(
18,049.5	90.24	359.46	8,221.0	9,671.2	41.6	0.00	0.00	0.00	0.00	BHL 6H 600' FNL, 24;



## Planning Report - Geographic

<b>Database:</b>	EDM 5000.1 Single User Db	<b>Local Co-ordinate Reference:</b>	Well Deporter 4-33-6H
<b>Company:</b>	Edge Energy, LLC	<b>TVD Reference:</b>	WELL @ 5411.0usft (Original Well Elev)
<b>Project:</b>	Sec. 4-T10N-R65W	<b>MD Reference:</b>	WELL @ 5411.0usft (Original Well Elev)
<b>Site:</b>	Deporter 4-B	<b>North Reference:</b>	True
<b>Well:</b>	Deporter 4-33-6H	<b>Survey Calculation Method:</b>	Minimum Curvature
<b>Wellbore:</b>	Wellbore #1		
<b>Design:</b>	Design #1 26Mar18 mnh		

Planned Survey									
Measured Depth (usft)	Inclination (°)	Azimuth (°)	Vertical Depth (usft)	+N/-S (usft)	+E/-W (usft)	Map Northing (usft)	Map Easting (usft)	Latitude	Longitude
0.0	0.00	0.00	0.0	0.0	0.0	1,555,868.26	3,229,958.31	40° 51' 22.594 N	104° 40' 7.393 W
100.0	0.00	0.00	100.0	0.0	0.0	1,555,868.26	3,229,958.31	40° 51' 22.594 N	104° 40' 7.393 W
200.0	0.00	0.00	200.0	0.0	0.0	1,555,868.26	3,229,958.31	40° 51' 22.594 N	104° 40' 7.393 W
300.0	0.00	0.00	300.0	0.0	0.0	1,555,868.26	3,229,958.31	40° 51' 22.594 N	104° 40' 7.393 W
400.0	0.00	0.00	400.0	0.0	0.0	1,555,868.26	3,229,958.31	40° 51' 22.594 N	104° 40' 7.393 W
500.0	0.00	0.00	500.0	0.0	0.0	1,555,868.26	3,229,958.31	40° 51' 22.594 N	104° 40' 7.393 W
Start Build 2.00									
600.0	2.00	163.33	600.0	-1.7	0.5	1,555,866.60	3,229,958.83	40° 51' 22.577 N	104° 40' 7.387 W
677.0	3.54	163.33	676.9	-5.2	1.6	1,555,863.04	3,229,959.93	40° 51' 22.542 N	104° 40' 7.373 W
Hold 3.54 Inc, 163.33 Az									
700.0	3.54	163.33	699.8	-6.6	2.0	1,555,861.69	3,229,960.35	40° 51' 22.528 N	104° 40' 7.367 W
800.0	3.54	163.33	799.7	-12.5	3.7	1,555,855.79	3,229,962.18	40° 51' 22.470 N	104° 40' 7.344 W
900.0	3.54	163.33	899.5	-18.4	5.5	1,555,849.89	3,229,964.00	40° 51' 22.412 N	104° 40' 7.321 W
1,000.0	3.54	163.33	999.3	-24.3	7.3	1,555,843.99	3,229,965.83	40° 51' 22.353 N	104° 40' 7.298 W
1,100.0	3.54	163.33	1,099.1	-30.3	9.1	1,555,838.10	3,229,967.65	40° 51' 22.295 N	104° 40' 7.275 W
1,200.0	3.54	163.33	1,198.9	-36.2	10.8	1,555,832.20	3,229,969.48	40° 51' 22.236 N	104° 40' 7.252 W
1,300.0	3.54	163.33	1,298.7	-42.1	12.6	1,555,826.30	3,229,971.31	40° 51' 22.178 N	104° 40' 7.229 W
1,400.0	3.54	163.33	1,398.5	-48.0	14.4	1,555,820.40	3,229,973.13	40° 51' 22.119 N	104° 40' 7.206 W
1,500.0	3.54	163.33	1,498.3	-53.9	16.1	1,555,814.51	3,229,974.96	40° 51' 22.061 N	104° 40' 7.183 W
1,600.0	3.54	163.33	1,598.1	-59.8	17.9	1,555,808.61	3,229,976.78	40° 51' 22.002 N	104° 40' 7.160 W
1,700.0	3.54	163.33	1,697.9	-65.7	19.7	1,555,802.71	3,229,978.61	40° 51' 21.944 N	104° 40' 7.137 W
1,800.0	3.54	163.33	1,797.7	-71.7	21.5	1,555,796.81	3,229,980.44	40° 51' 21.886 N	104° 40' 7.114 W
1,900.0	3.54	163.33	1,897.6	-77.6	23.2	1,555,790.92	3,229,982.26	40° 51' 21.827 N	104° 40' 7.091 W
2,000.0	3.54	163.33	1,997.4	-83.5	25.0	1,555,785.02	3,229,984.09	40° 51' 21.769 N	104° 40' 7.068 W
2,100.0	3.54	163.33	2,097.2	-89.4	26.8	1,555,779.12	3,229,985.91	40° 51' 21.710 N	104° 40' 7.045 W
2,200.0	3.54	163.33	2,197.0	-95.3	28.5	1,555,773.23	3,229,987.74	40° 51' 21.652 N	104° 40' 7.022 W
2,300.0	3.54	163.33	2,296.8	-101.2	30.3	1,555,767.33	3,229,989.57	40° 51' 21.593 N	104° 40' 6.999 W
2,400.0	3.54	163.33	2,396.6	-107.1	32.1	1,555,761.43	3,229,991.39	40° 51' 21.535 N	104° 40' 6.976 W
2,500.0	3.54	163.33	2,496.4	-113.1	33.8	1,555,755.53	3,229,993.22	40° 51' 21.477 N	104° 40' 6.953 W
2,600.0	3.54	163.33	2,596.2	-119.0	35.6	1,555,749.64	3,229,995.04	40° 51' 21.418 N	104° 40' 6.930 W
2,700.0	3.54	163.33	2,696.0	-124.9	37.4	1,555,743.74	3,229,996.87	40° 51' 21.360 N	104° 40' 6.907 W
2,800.0	3.54	163.33	2,795.8	-130.8	39.2	1,555,737.84	3,229,998.70	40° 51' 21.301 N	104° 40' 6.884 W
2,900.0	3.54	163.33	2,895.6	-136.7	40.9	1,555,731.94	3,230,000.52	40° 51' 21.243 N	104° 40' 6.861 W
3,000.0	3.54	163.33	2,995.5	-142.6	42.7	1,555,726.05	3,230,002.35	40° 51' 21.184 N	104° 40' 6.838 W
3,100.0	3.54	163.33	3,095.3	-148.5	44.5	1,555,720.15	3,230,004.18	40° 51' 21.126 N	104° 40' 6.814 W
3,200.0	3.54	163.33	3,195.1	-154.5	46.2	1,555,714.25	3,230,006.00	40° 51' 21.067 N	104° 40' 6.791 W
3,300.0	3.54	163.33	3,294.9	-160.4	48.0	1,555,708.35	3,230,007.83	40° 51' 21.009 N	104° 40' 6.768 W
3,400.0	3.54	163.33	3,394.7	-166.3	49.8	1,555,702.46	3,230,009.65	40° 51' 20.951 N	104° 40' 6.745 W
3,500.0	3.54	163.33	3,494.5	-172.2	51.6	1,555,696.56	3,230,011.48	40° 51' 20.892 N	104° 40' 6.722 W
3,600.0	3.54	163.33	3,594.3	-178.1	53.3	1,555,690.66	3,230,013.31	40° 51' 20.834 N	104° 40' 6.699 W
3,700.0	3.54	163.33	3,694.1	-184.0	55.1	1,555,684.76	3,230,015.13	40° 51' 20.775 N	104° 40' 6.676 W
3,800.0	3.54	163.33	3,793.9	-189.9	56.9	1,555,678.87	3,230,016.96	40° 51' 20.717 N	104° 40' 6.653 W
3,900.0	3.54	163.33	3,893.7	-195.9	58.6	1,555,672.97	3,230,018.78	40° 51' 20.658 N	104° 40' 6.630 W
4,000.0	3.54	163.33	3,993.5	-201.8	60.4	1,555,667.07	3,230,020.61	40° 51' 20.600 N	104° 40' 6.607 W
4,100.0	3.54	163.33	4,093.3	-207.7	62.2	1,555,661.17	3,230,022.44	40° 51' 20.542 N	104° 40' 6.584 W
4,200.0	3.54	163.33	4,193.2	-213.6	64.0	1,555,655.28	3,230,024.26	40° 51' 20.483 N	104° 40' 6.561 W
4,300.0	3.54	163.33	4,293.0	-219.5	65.7	1,555,649.38	3,230,026.09	40° 51' 20.425 N	104° 40' 6.538 W
4,400.0	3.54	163.33	4,392.8	-225.4	67.5	1,555,643.48	3,230,027.91	40° 51' 20.366 N	104° 40' 6.515 W
4,500.0	3.54	163.33	4,492.6	-231.3	69.3	1,555,637.58	3,230,029.74	40° 51' 20.308 N	104° 40' 6.492 W
4,600.0	3.54	163.33	4,592.4	-237.3	71.0	1,555,631.69	3,230,031.57	40° 51' 20.249 N	104° 40' 6.469 W
4,700.0	3.54	163.33	4,692.2	-243.2	72.8	1,555,625.79	3,230,033.39	40° 51' 20.191 N	104° 40' 6.446 W
4,800.0	3.54	163.33	4,792.0	-249.1	74.6	1,555,619.89	3,230,035.22	40° 51' 20.132 N	104° 40' 6.423 W
4,900.0	3.54	163.33	4,891.8	-255.0	76.3	1,555,613.99	3,230,037.05	40° 51' 20.074 N	104° 40' 6.400 W
5,000.0	3.54	163.33	4,991.6	-260.9	78.1	1,555,608.10	3,230,038.87	40° 51' 20.016 N	104° 40' 6.377 W

<b>Database:</b>	EDM 5000.1 Single User Db	<b>Local Co-ordinate Reference:</b>	Well Deporter 4-33-6H
<b>Company:</b>	Edge Energy, LLC	<b>TVD Reference:</b>	WELL @ 5411.0usft (Original Well Elev)
<b>Project:</b>	Sec. 4-T10N-R65W	<b>MD Reference:</b>	WELL @ 5411.0usft (Original Well Elev)
<b>Site:</b>	Deporter 4-B	<b>North Reference:</b>	True
<b>Well:</b>	Deporter 4-33-6H	<b>Survey Calculation Method:</b>	Minimum Curvature
<b>Wellbore:</b>	Wellbore #1		
<b>Design:</b>	Design #1 26Mar18 mnh		

Planned Survey										
Measured Depth (usft)	Inclination (°)	Azimuth (°)	Vertical Depth (usft)	+N/-S (usft)	+E/-W (usft)	Map Northing (usft)	Map Easting (usft)	Latitude	Longitude	
5,100.0	3.54	163.33	5,091.4	-266.8	79.9	1,555,602.20	3,230,040.70	40° 51' 19.957 N	104° 40' 6.354 W	
5,200.0	3.54	163.33	5,191.2	-272.7	81.7	1,555,596.30	3,230,042.52	40° 51' 19.899 N	104° 40' 6.331 W	
5,300.0	3.54	163.33	5,291.1	-278.7	83.4	1,555,590.40	3,230,044.35	40° 51' 19.840 N	104° 40' 6.308 W	
5,400.0	3.54	163.33	5,390.9	-284.6	85.2	1,555,584.51	3,230,046.18	40° 51' 19.782 N	104° 40' 6.284 W	
5,500.0	3.54	163.33	5,490.7	-290.5	87.0	1,555,578.61	3,230,048.00	40° 51' 19.723 N	104° 40' 6.261 W	
5,600.0	3.54	163.33	5,590.5	-296.4	88.7	1,555,572.71	3,230,049.83	40° 51' 19.665 N	104° 40' 6.238 W	
5,700.0	3.54	163.33	5,690.3	-302.3	90.5	1,555,566.81	3,230,051.65	40° 51' 19.607 N	104° 40' 6.215 W	
5,800.0	3.54	163.33	5,790.1	-308.2	92.3	1,555,560.92	3,230,053.48	40° 51' 19.548 N	104° 40' 6.192 W	
5,900.0	3.54	163.33	5,889.9	-314.1	94.1	1,555,555.02	3,230,055.31	40° 51' 19.490 N	104° 40' 6.169 W	
6,000.0	3.54	163.33	5,989.7	-320.1	95.8	1,555,549.12	3,230,057.13	40° 51' 19.431 N	104° 40' 6.146 W	
6,100.0	3.54	163.33	6,089.5	-326.0	97.6	1,555,543.23	3,230,058.96	40° 51' 19.373 N	104° 40' 6.123 W	
6,200.0	3.54	163.33	6,189.3	-331.9	99.4	1,555,537.33	3,230,060.78	40° 51' 19.314 N	104° 40' 6.100 W	
6,300.0	3.54	163.33	6,289.1	-337.8	101.1	1,555,531.43	3,230,062.61	40° 51' 19.256 N	104° 40' 6.077 W	
6,400.0	3.54	163.33	6,389.0	-343.7	102.9	1,555,525.53	3,230,064.44	40° 51' 19.197 N	104° 40' 6.054 W	
6,500.0	3.54	163.33	6,488.8	-349.6	104.7	1,555,519.64	3,230,066.26	40° 51' 19.139 N	104° 40' 6.031 W	
6,600.0	3.54	163.33	6,588.6	-355.5	106.4	1,555,513.74	3,230,068.09	40° 51' 19.081 N	104° 40' 6.008 W	
6,700.0	3.54	163.33	6,688.4	-361.5	108.2	1,555,507.84	3,230,069.92	40° 51' 19.022 N	104° 40' 5.985 W	
6,800.0	3.54	163.33	6,788.2	-367.4	110.0	1,555,501.94	3,230,071.74	40° 51' 18.964 N	104° 40' 5.962 W	
6,900.0	3.54	163.33	6,888.0	-373.3	111.8	1,555,496.05	3,230,073.57	40° 51' 18.905 N	104° 40' 5.939 W	
7,000.0	3.54	163.33	6,987.8	-379.2	113.5	1,555,490.15	3,230,075.39	40° 51' 18.847 N	104° 40' 5.916 W	
7,100.0	3.54	163.33	7,087.6	-385.1	115.3	1,555,484.25	3,230,077.22	40° 51' 18.788 N	104° 40' 5.893 W	
7,200.0	3.54	163.33	7,187.4	-391.0	117.1	1,555,478.35	3,230,079.05	40° 51' 18.730 N	104° 40' 5.870 W	
7,300.0	3.54	163.33	7,287.2	-396.9	118.8	1,555,472.46	3,230,080.87	40° 51' 18.672 N	104° 40' 5.847 W	
7,400.0	3.54	163.33	7,387.0	-402.9	120.6	1,555,466.56	3,230,082.70	40° 51' 18.613 N	104° 40' 5.824 W	
7,500.0	3.54	163.33	7,486.9	-408.8	122.4	1,555,460.66	3,230,084.52	40° 51' 18.555 N	104° 40' 5.801 W	
7,515.6	3.54	163.33	7,502.4	-409.7	122.7	1,555,459.74	3,230,084.81	40° 51' 18.546 N	104° 40' 5.797 W	
KOP 8/100										
7,600.0	3.49	15.83	7,586.8	-409.7	124.1	1,555,459.73	3,230,086.26	40° 51' 18.545 N	104° 40' 5.778 W	
7,700.0	11.39	4.36	7,685.8	-396.9	125.7	1,555,472.54	3,230,087.72	40° 51' 18.672 N	104° 40' 5.757 W	
7,800.0	19.37	2.27	7,782.2	-370.5	127.1	1,555,499.02	3,230,088.89	40° 51' 18.933 N	104° 40' 5.739 W	
7,900.0	27.37	1.37	7,873.9	-330.8	128.3	1,555,538.65	3,230,089.73	40° 51' 19.325 N	104° 40' 5.723 W	
8,000.0	35.36	0.86	7,959.2	-278.8	129.3	1,555,590.65	3,230,090.22	40° 51' 19.838 N	104° 40' 5.711 W	
8,100.0	43.36	0.51	8,036.5	-215.5	130.0	1,555,654.02	3,230,090.37	40° 51' 20.465 N	104° 40' 5.701 W	
8,200.0	51.36	0.26	8,104.2	-142.0	130.5	1,555,727.52	3,230,090.16	40° 51' 21.191 N	104° 40' 5.695 W	
8,300.0	59.36	0.05	8,161.0	-59.8	130.7	1,555,809.72	3,230,089.61	40° 51' 22.003 N	104° 40' 5.692 W	
8,400.0	67.35	359.88	8,205.8	29.5	130.7	1,555,899.02	3,230,088.71	40° 51' 22.885 N	104° 40' 5.693 W	
8,500.0	75.35	359.73	8,237.7	124.2	130.4	1,555,993.69	3,230,087.50	40° 51' 23.821 N	104° 40' 5.697 W	
8,600.0	83.35	359.58	8,256.2	222.4	129.8	1,556,091.87	3,230,085.98	40° 51' 24.791 N	104° 40' 5.705 W	
8,686.2	90.24	359.46	8,261.0	308.4	129.0	1,556,177.85	3,230,084.46	40° 51' 25.641 N	104° 40' 5.714 W	
EP 90.24 Inc, 359.46 Az										
8,700.0	90.24	359.46	8,260.9	322.2	128.9	1,556,191.67	3,230,084.20	40° 51' 25.777 N	104° 40' 5.716 W	
8,800.0	90.24	359.46	8,260.5	422.2	128.0	1,556,291.65	3,230,082.33	40° 51' 26.765 N	104° 40' 5.728 W	
8,900.0	90.24	359.46	8,260.1	522.2	127.0	1,556,391.63	3,230,080.46	40° 51' 27.753 N	104° 40' 5.740 W	
9,000.0	90.24	359.46	8,259.7	622.2	126.1	1,556,491.62	3,230,078.59	40° 51' 28.741 N	104° 40' 5.752 W	
9,100.0	90.24	359.46	8,259.2	722.2	125.2	1,556,591.60	3,230,076.72	40° 51' 29.729 N	104° 40' 5.764 W	
9,200.0	90.24	359.46	8,258.8	822.2	124.2	1,556,691.58	3,230,074.85	40° 51' 30.717 N	104° 40' 5.776 W	
9,300.0	90.24	359.46	8,258.4	922.2	123.3	1,556,791.56	3,230,072.97	40° 51' 31.705 N	104° 40' 5.788 W	
9,400.0	90.24	359.46	8,258.0	1,022.2	122.4	1,556,891.54	3,230,071.10	40° 51' 32.693 N	104° 40' 5.801 W	
9,500.0	90.24	359.46	8,257.5	1,122.2	121.4	1,556,991.52	3,230,069.23	40° 51' 33.681 N	104° 40' 5.813 W	
9,600.0	90.24	359.46	8,257.1	1,222.2	120.5	1,557,091.50	3,230,067.36	40° 51' 34.669 N	104° 40' 5.825 W	
9,700.0	90.24	359.46	8,256.7	1,322.2	119.6	1,557,191.48	3,230,065.49	40° 51' 35.657 N	104° 40' 5.837 W	
9,800.0	90.24	359.46	8,256.2	1,422.2	118.6	1,557,291.47	3,230,063.62	40° 51' 36.646 N	104° 40' 5.849 W	
9,900.0	90.24	359.46	8,255.8	1,522.1	117.7	1,557,391.45	3,230,061.74	40° 51' 37.634 N	104° 40' 5.861 W	
10,000.0	90.24	359.46	8,255.4	1,622.1	116.8	1,557,491.43	3,230,059.87	40° 51' 38.622 N	104° 40' 5.873 W	

<b>Database:</b>	EDM 5000.1 Single User Db	<b>Local Co-ordinate Reference:</b>	Well Deporter 4-33-6H
<b>Company:</b>	Edge Energy, LLC	<b>TVD Reference:</b>	WELL @ 5411.0usft (Original Well Elev)
<b>Project:</b>	Sec. 4-T10N-R65W	<b>MD Reference:</b>	WELL @ 5411.0usft (Original Well Elev)
<b>Site:</b>	Deporter 4-B	<b>North Reference:</b>	True
<b>Well:</b>	Deporter 4-33-6H	<b>Survey Calculation Method:</b>	Minimum Curvature
<b>Wellbore:</b>	Wellbore #1		
<b>Design:</b>	Design #1 26Mar18 mnh		

Planned Survey										
Measured Depth (usft)	Inclination (°)	Azimuth (°)	Vertical Depth (usft)	+N/-S (usft)	+E/-W (usft)	Map Northing (usft)	Map Easting (usft)	Latitude	Longitude	
10,100.0	90.24	359.46	8,255.0	1,722.1	115.8	1,557,591.41	3,230,058.00	40° 51' 39.610 N	104° 40' 5.886 W	
10,200.0	90.24	359.46	8,254.5	1,822.1	114.9	1,557,691.39	3,230,056.13	40° 51' 40.598 N	104° 40' 5.898 W	
10,300.0	90.24	359.46	8,254.1	1,922.1	114.0	1,557,791.37	3,230,054.26	40° 51' 41.586 N	104° 40' 5.910 W	
10,400.0	90.24	359.46	8,253.7	2,022.1	113.0	1,557,891.35	3,230,052.39	40° 51' 42.574 N	104° 40' 5.922 W	
10,500.0	90.24	359.46	8,253.3	2,122.1	112.1	1,557,991.34	3,230,050.52	40° 51' 43.562 N	104° 40' 5.934 W	
10,600.0	90.24	359.46	8,252.8	2,222.1	111.2	1,558,091.32	3,230,048.64	40° 51' 44.550 N	104° 40' 5.946 W	
10,700.0	90.24	359.46	8,252.4	2,322.1	110.2	1,558,191.30	3,230,046.77	40° 51' 45.538 N	104° 40' 5.959 W	
10,800.0	90.24	359.46	8,252.0	2,422.1	109.3	1,558,291.28	3,230,044.90	40° 51' 46.526 N	104° 40' 5.971 W	
10,900.0	90.24	359.46	8,251.5	2,522.1	108.4	1,558,391.26	3,230,043.03	40° 51' 47.514 N	104° 40' 5.983 W	
11,000.0	90.24	359.46	8,251.1	2,622.1	107.4	1,558,491.24	3,230,041.16	40° 51' 48.502 N	104° 40' 5.995 W	
11,100.0	90.24	359.46	8,250.7	2,722.1	106.5	1,558,591.22	3,230,039.29	40° 51' 49.490 N	104° 40' 6.007 W	
11,200.0	90.24	359.46	8,250.3	2,822.1	105.6	1,558,691.21	3,230,037.41	40° 51' 50.478 N	104° 40' 6.019 W	
11,300.0	90.24	359.46	8,249.8	2,922.1	104.6	1,558,791.19	3,230,035.54	40° 51' 51.466 N	104° 40' 6.031 W	
11,400.0	90.24	359.46	8,249.4	3,022.1	103.7	1,558,891.17	3,230,033.67	40° 51' 52.454 N	104° 40' 6.044 W	
11,500.0	90.24	359.46	8,249.0	3,122.1	102.8	1,558,991.15	3,230,031.80	40° 51' 53.442 N	104° 40' 6.056 W	
11,600.0	90.24	359.46	8,248.6	3,222.1	101.8	1,559,091.13	3,230,029.93	40° 51' 54.430 N	104° 40' 6.068 W	
11,700.0	90.24	359.46	8,248.1	3,322.0	100.9	1,559,191.11	3,230,028.06	40° 51' 55.418 N	104° 40' 6.080 W	
11,800.0	90.24	359.46	8,247.7	3,422.0	100.0	1,559,291.09	3,230,026.18	40° 51' 56.406 N	104° 40' 6.092 W	
11,900.0	90.24	359.46	8,247.3	3,522.0	99.0	1,559,391.07	3,230,024.31	40° 51' 57.394 N	104° 40' 6.104 W	
12,000.0	90.24	359.46	8,246.8	3,622.0	98.1	1,559,491.06	3,230,022.44	40° 51' 58.382 N	104° 40' 6.117 W	
12,100.0	90.24	359.46	8,246.4	3,722.0	97.2	1,559,591.04	3,230,020.57	40° 51' 59.370 N	104° 40' 6.129 W	
12,200.0	90.24	359.46	8,246.0	3,822.0	96.2	1,559,691.02	3,230,018.70	40° 52' 0.358 N	104° 40' 6.141 W	
12,300.0	90.24	359.46	8,245.6	3,922.0	95.3	1,559,791.00	3,230,016.83	40° 52' 1.346 N	104° 40' 6.153 W	
12,400.0	90.24	359.46	8,245.1	4,022.0	94.4	1,559,890.98	3,230,014.96	40° 52' 2.334 N	104° 40' 6.165 W	
12,500.0	90.24	359.46	8,244.7	4,122.0	93.4	1,559,990.96	3,230,013.08	40° 52' 3.322 N	104° 40' 6.177 W	
12,600.0	90.24	359.46	8,244.3	4,222.0	92.5	1,560,090.94	3,230,011.21	40° 52' 4.310 N	104° 40' 6.189 W	
12,700.0	90.24	359.46	8,243.9	4,322.0	91.5	1,560,190.93	3,230,009.34	40° 52' 5.298 N	104° 40' 6.202 W	
12,800.0	90.24	359.46	8,243.4	4,422.0	90.6	1,560,290.91	3,230,007.47	40° 52' 6.286 N	104° 40' 6.214 W	
12,900.0	90.24	359.46	8,243.0	4,522.0	89.7	1,560,390.89	3,230,005.60	40° 52' 7.274 N	104° 40' 6.226 W	
13,000.0	90.24	359.46	8,242.6	4,622.0	88.7	1,560,490.87	3,230,003.73	40° 52' 8.262 N	104° 40' 6.238 W	
13,100.0	90.24	359.46	8,242.1	4,722.0	87.8	1,560,590.85	3,230,001.85	40° 52' 9.250 N	104° 40' 6.250 W	
13,200.0	90.24	359.46	8,241.7	4,822.0	86.9	1,560,690.83	3,229,999.98	40° 52' 10.238 N	104° 40' 6.262 W	
13,300.0	90.24	359.46	8,241.3	4,922.0	85.9	1,560,790.81	3,229,998.11	40° 52' 11.226 N	104° 40' 6.275 W	
13,400.0	90.24	359.46	8,240.9	5,022.0	85.0	1,560,890.80	3,229,996.24	40° 52' 12.214 N	104° 40' 6.287 W	
13,500.0	90.24	359.46	8,240.4	5,121.9	84.1	1,560,990.78	3,229,994.37	40° 52' 13.202 N	104° 40' 6.299 W	
13,600.0	90.24	359.46	8,240.0	5,221.9	83.1	1,561,090.76	3,229,992.50	40° 52' 14.190 N	104° 40' 6.311 W	
13,700.0	90.24	359.46	8,239.6	5,321.9	82.2	1,561,190.74	3,229,990.62	40° 52' 15.178 N	104° 40' 6.323 W	
13,800.0	90.24	359.46	8,239.2	5,421.9	81.3	1,561,290.72	3,229,988.75	40° 52' 16.166 N	104° 40' 6.335 W	
13,900.0	90.24	359.46	8,238.7	5,521.9	80.3	1,561,390.70	3,229,986.88	40° 52' 17.154 N	104° 40' 6.347 W	
14,000.0	90.24	359.46	8,238.3	5,621.9	79.4	1,561,490.68	3,229,985.01	40° 52' 18.142 N	104° 40' 6.360 W	
14,100.0	90.24	359.46	8,237.9	5,721.9	78.5	1,561,590.67	3,229,983.14	40° 52' 19.130 N	104° 40' 6.372 W	
14,200.0	90.24	359.46	8,237.4	5,821.9	77.5	1,561,690.65	3,229,981.27	40° 52' 20.118 N	104° 40' 6.384 W	
14,300.0	90.24	359.46	8,237.0	5,921.9	76.6	1,561,790.63	3,229,979.40	40° 52' 21.106 N	104° 40' 6.396 W	
14,400.0	90.24	359.46	8,236.6	6,021.9	75.7	1,561,890.61	3,229,977.52	40° 52' 22.094 N	104° 40' 6.408 W	
14,500.0	90.24	359.46	8,236.2	6,121.9	74.7	1,561,990.59	3,229,975.65	40° 52' 23.082 N	104° 40' 6.420 W	
14,600.0	90.24	359.46	8,235.7	6,221.9	73.8	1,562,090.57	3,229,973.78	40° 52' 24.070 N	104° 40' 6.433 W	
14,700.0	90.24	359.46	8,235.3	6,321.9	72.9	1,562,190.55	3,229,971.91	40° 52' 25.058 N	104° 40' 6.445 W	
14,800.0	90.24	359.46	8,234.9	6,421.9	71.9	1,562,290.53	3,229,970.04	40° 52' 26.046 N	104° 40' 6.457 W	
14,900.0	90.24	359.46	8,234.5	6,521.9	71.0	1,562,390.52	3,229,968.17	40° 52' 27.034 N	104° 40' 6.469 W	
15,000.0	90.24	359.46	8,234.0	6,621.9	70.1	1,562,490.50	3,229,966.29	40° 52' 28.022 N	104° 40' 6.481 W	
15,100.0	90.24	359.46	8,233.6	6,721.9	69.1	1,562,590.48	3,229,964.42	40° 52' 29.010 N	104° 40' 6.493 W	
15,200.0	90.24	359.46	8,233.2	6,821.9	68.2	1,562,690.46	3,229,962.55	40° 52' 29.998 N	104° 40' 6.506 W	
15,300.0	90.24	359.46	8,232.7	6,921.9	67.3	1,562,790.44	3,229,960.68	40° 52' 30.986 N	104° 40' 6.518 W	
15,400.0	90.24	359.46	8,232.3	7,021.8	66.3	1,562,890.42	3,229,958.81	40° 52' 31.974 N	104° 40' 6.530 W	
15,500.0	90.24	359.46	8,231.9	7,121.8	65.4	1,562,990.40	3,229,956.94	40° 52' 32.962 N	104° 40' 6.542 W	

<b>Database:</b>	EDM 5000.1 Single User Db	<b>Local Co-ordinate Reference:</b>	Well Deporter 4-33-6H
<b>Company:</b>	Edge Energy, LLC	<b>TVD Reference:</b>	WELL @ 5411.0usft (Original Well Elev)
<b>Project:</b>	Sec. 4-T10N-R65W	<b>MD Reference:</b>	WELL @ 5411.0usft (Original Well Elev)
<b>Site:</b>	Deporter 4-B	<b>North Reference:</b>	True
<b>Well:</b>	Deporter 4-33-6H	<b>Survey Calculation Method:</b>	Minimum Curvature
<b>Wellbore:</b>	Wellbore #1		
<b>Design:</b>	Design #1 26Mar18 mnh		

Planned Survey										
Measured Depth (usft)	Inclination (°)	Azimuth (°)	Vertical Depth (usft)	+N/-S (usft)	+E/-W (usft)	Map Northing (usft)	Map Easting (usft)	Latitude	Longitude	
15,600.0	90.24	359.46	8,231.5	7,221.8	64.5	1,563,090.39	3,229,955.06	40° 52' 33.950 N	104° 40' 6.554 W	
15,700.0	90.24	359.46	8,231.0	7,321.8	63.5	1,563,190.37	3,229,953.19	40° 52' 34.938 N	104° 40' 6.566 W	
15,800.0	90.24	359.46	8,230.6	7,421.8	62.6	1,563,290.35	3,229,951.32	40° 52' 35.926 N	104° 40' 6.578 W	
15,900.0	90.24	359.46	8,230.2	7,521.8	61.7	1,563,390.33	3,229,949.45	40° 52' 36.915 N	104° 40' 6.591 W	
16,000.0	90.24	359.46	8,229.8	7,621.8	60.7	1,563,490.31	3,229,947.58	40° 52' 37.903 N	104° 40' 6.603 W	
16,100.0	90.24	359.46	8,229.3	7,721.8	59.8	1,563,590.29	3,229,945.71	40° 52' 38.891 N	104° 40' 6.615 W	
16,200.0	90.24	359.46	8,228.9	7,821.8	58.9	1,563,690.27	3,229,943.84	40° 52' 39.879 N	104° 40' 6.627 W	
16,300.0	90.24	359.46	8,228.5	7,921.8	57.9	1,563,790.26	3,229,941.96	40° 52' 40.867 N	104° 40' 6.639 W	
16,400.0	90.24	359.46	8,228.0	8,021.8	57.0	1,563,890.24	3,229,940.09	40° 52' 41.855 N	104° 40' 6.651 W	
16,500.0	90.24	359.46	8,227.6	8,121.8	56.0	1,563,990.22	3,229,938.22	40° 52' 42.843 N	104° 40' 6.664 W	
16,600.0	90.24	359.46	8,227.2	8,221.8	55.1	1,564,090.20	3,229,936.35	40° 52' 43.831 N	104° 40' 6.676 W	
16,700.0	90.24	359.46	8,226.8	8,321.8	54.2	1,564,190.18	3,229,934.48	40° 52' 44.819 N	104° 40' 6.688 W	
16,800.0	90.24	359.46	8,226.3	8,421.8	53.2	1,564,290.16	3,229,932.61	40° 52' 45.807 N	104° 40' 6.700 W	
16,900.0	90.24	359.46	8,225.9	8,521.8	52.3	1,564,390.14	3,229,930.73	40° 52' 46.795 N	104° 40' 6.712 W	
17,000.0	90.24	359.46	8,225.5	8,621.8	51.4	1,564,490.12	3,229,928.86	40° 52' 47.783 N	104° 40' 6.724 W	
17,100.0	90.24	359.46	8,225.1	8,721.8	50.4	1,564,590.11	3,229,926.99	40° 52' 48.771 N	104° 40' 6.737 W	
17,200.0	90.24	359.46	8,224.6	8,821.7	49.5	1,564,690.09	3,229,925.12	40° 52' 49.759 N	104° 40' 6.749 W	
17,300.0	90.24	359.46	8,224.2	8,921.7	48.6	1,564,790.07	3,229,923.25	40° 52' 50.747 N	104° 40' 6.761 W	
17,400.0	90.24	359.46	8,223.8	9,021.7	47.6	1,564,890.05	3,229,921.38	40° 52' 51.735 N	104° 40' 6.773 W	
17,500.0	90.24	359.46	8,223.3	9,121.7	46.7	1,564,990.03	3,229,919.50	40° 52' 52.723 N	104° 40' 6.785 W	
17,600.0	90.24	359.46	8,222.9	9,221.7	45.8	1,565,090.01	3,229,917.63	40° 52' 53.711 N	104° 40' 6.797 W	
17,700.0	90.24	359.46	8,222.5	9,321.7	44.8	1,565,189.99	3,229,915.76	40° 52' 54.699 N	104° 40' 6.809 W	
17,800.0	90.24	359.46	8,222.1	9,421.7	43.9	1,565,289.98	3,229,913.89	40° 52' 55.687 N	104° 40' 6.822 W	
17,900.0	90.24	359.46	8,221.6	9,521.7	43.0	1,565,389.96	3,229,912.02	40° 52' 56.675 N	104° 40' 6.834 W	
18,000.0	90.24	359.46	8,221.2	9,621.7	42.0	1,565,489.94	3,229,910.15	40° 52' 57.663 N	104° 40' 6.846 W	
18,049.5	90.24	359.46	8,221.0	9,671.2	41.6	1,565,539.44	3,229,909.22	40° 52' 58.152 N	104° 40' 6.852 W	
TD at 18049.5										

Design Targets										
Target Name - hit/miss target - Shape	Dip Angle (°)	Dip Dir. (°)	TVD (usft)	+N/-S (usft)	+E/-W (usft)	Northing (usft)	Easting (usft)	Latitude	Longitude	
SHL 6H 290' FSL, 2284' - plan hits target center - Point	0.00	0.00	0.0	0.0	0.0	1,555,868.26	3,229,958.31	40° 51' 22.594 N	104° 40' 7.393 W	
BHL 6H 600' FNL, 2420' - plan hits target center - Point	0.00	0.00	8,221.0	9,671.2	41.6	1,565,539.44	3,229,909.22	40° 52' 58.152 N	104° 40' 6.852 W	
EP 6H 600' FSL, 2420' F - plan hits target center - Point	0.00	0.00	8,261.0	308.4	129.0	1,556,177.85	3,230,084.46	40° 51' 25.641 N	104° 40' 5.714 W	



<b>Database:</b>	EDM 5000.1 Single User Db	<b>Local Co-ordinate Reference:</b>	Well Deporter 4-33-6H
<b>Company:</b>	Edge Energy, LLC	<b>TVD Reference:</b>	WELL @ 5411.0usft (Original Well Elev)
<b>Project:</b>	Sec. 4-T10N-R65W	<b>MD Reference:</b>	WELL @ 5411.0usft (Original Well Elev)
<b>Site:</b>	Deporter 4-B	<b>North Reference:</b>	True
<b>Well:</b>	Deporter 4-33-6H	<b>Survey Calculation Method:</b>	Minimum Curvature
<b>Wellbore:</b>	Wellbore #1		
<b>Design:</b>	Design #1 26Mar18 mnh		

Plan Annotations				
Measured Depth (usft)	Vertical Depth (usft)	Local Coordinates		Comment
		+N/-S (usft)	+E/-W (usft)	
500.0	500.0	0.0	0.0	Start Build 2.00
677.0	676.9	-5.2	1.6	Hold 3.54 Inc, 163.33 Az
7,515.6	7,502.4	-409.7	122.7	KOP 8/100
8,686.2	8,261.0	308.4	129.0	EP 90.24 Inc, 359.46 Az
18,049.5	8,221.0	9,671.2	41.6	TD at 18049.5