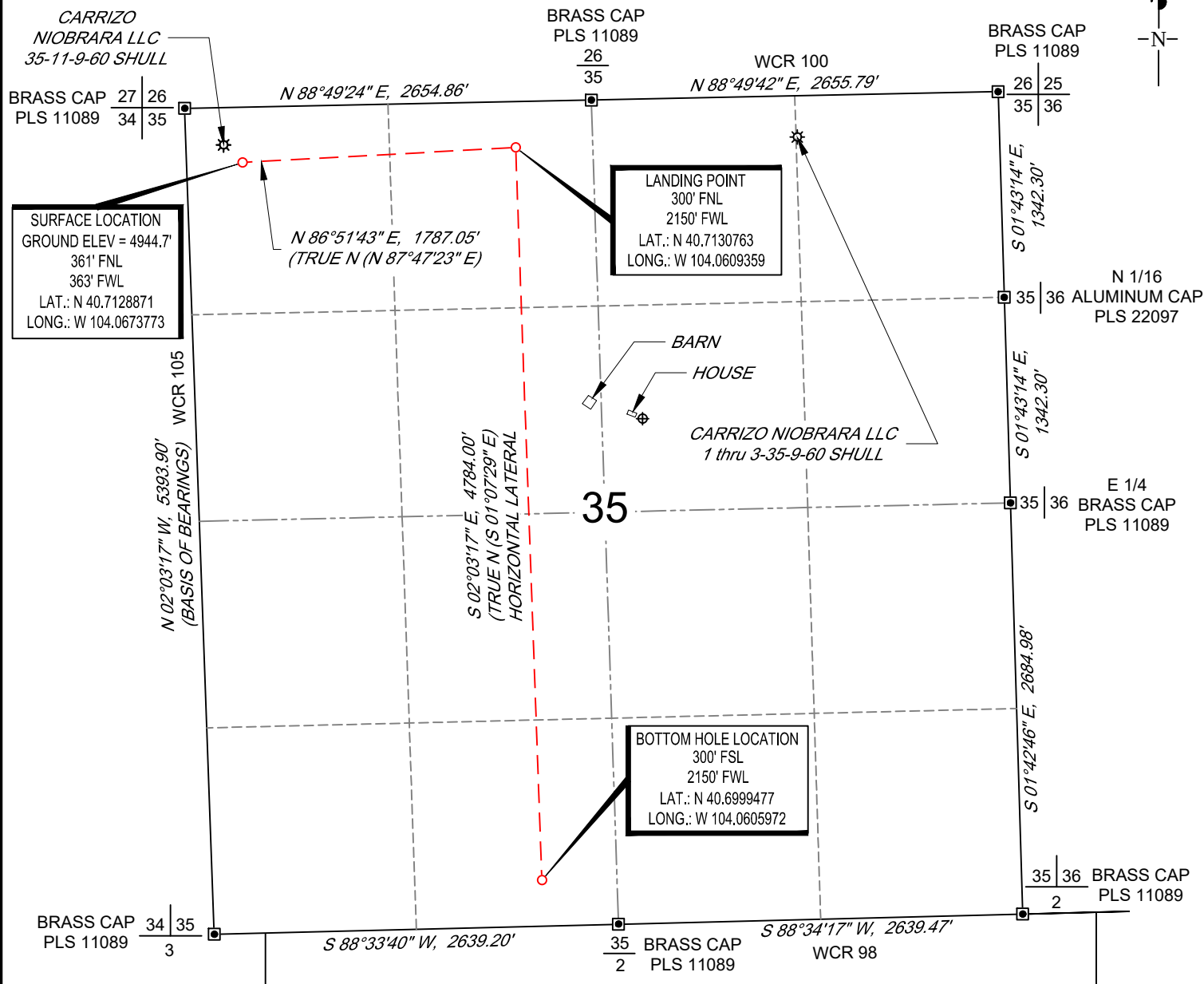


SCALE: 1" = 1000'

0' 500' 1000'

# WELL LOCATION MAP

SHL NW/4 NW/4, SECTION 35, TOWNSHIP 9-N, RANGE 60-W  
LP NE/4 NW/4, SECTION 35, TOWNSHIP 9-N, RANGE 60-W  
BHL SE/4 SW/4, SECTION 35, TOWNSHIP 9-N, RANGE 60-W  
WELD COUNTY, COLORADO



## LEGEND

☼ WELLHEAD  
⊕ WATER WELL

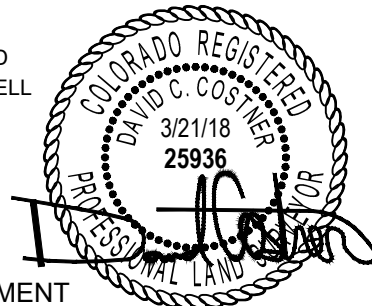
## NOTES

1. Horizontal (NAD 83) and vertical (NAVD 88) datum is based on the Trimble VRS Network or OPUS Solution.
2. All directions, distances, and dimensions shown hereon are based on coordinates from the "Colorado coordinate system of 1983 north zone" (article 52 of title 38, C.R.S.).
3. All section line dimensions shown hereon are based on field measurements of existing monuments and/or physical evidence found in the field unless otherwise indicated.
4. Physical features shown hereon are for graphical representation only.
5. See Form 2A, if applicable for visible improvements within 500' of wellhead.
6. Distances to nearest section lines are measured perpendicularly.
7. This is not a land survey nor land survey plat.

PDOP Reading: 1.5 Instrument Operator: Joe DiGregorio  
Date Surveyed: 03/14/2018

## SURVEYOR'S STATEMENT

The undersigned hereby states that the well location shown hereon was staked on the ground based on existing monumentation and/or physical evidence found in the field and is correct to the best of my knowledge, information and belief.



VERDAD RESOURCES  
BOYDSTON 3535-06H  
JOB NO: 115946

MML	03/21/2018	REVISION:	
SHEET :	1 OF 1	INT	DATE
FILE:LO_BOYDSTON_3535_06H			