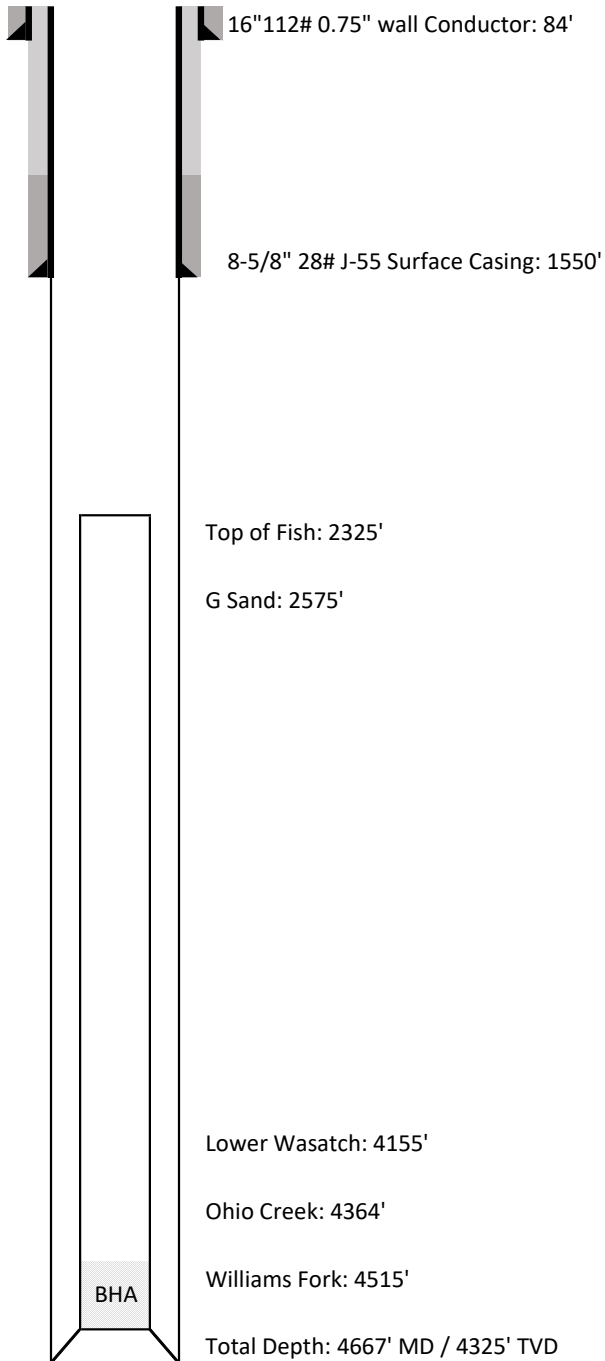


Laramie Energy LLC

Current Wellbore Schematic



Well Name Nichols 0994-24-16E
API No. 05-077-10400-00
Diagram Date 4/9/2018
Legal Location SENW 24 9S 94W 6th PM
GPS Coordinates Lat 39.263283
Long -107.830839
Field Brush Creek
County Mesa
State Colorado
G.L. Elevation 7212'
K.B. Elevation 7236'

Cementing Details

Conductor Pipe

16" 112# 0.750" wall set at 60'
4yds of Concrete to surface

Surface Casing

8-5/8" 28# J-55 set at 1550'
Lead: 171sk of 12.0ppg lead
ALTCem S100-12
2.52cf/sk
Tail: 107sk of 12.5ppg tail
ALTCem S100-12
2.22cf/sk
19bbls of good cement to surface

Fish Description

PDC Bit
6-1/2" Mud Motor - 30'
6-1/2" Drill Collars w/ EM MWD (No Gamma) - 79'
4-1/2" HWDP - 878'
4-1/2" DP - 1355'
Total Fish Length: 2342'

*All depths are referenced to KB
Not to scale*