

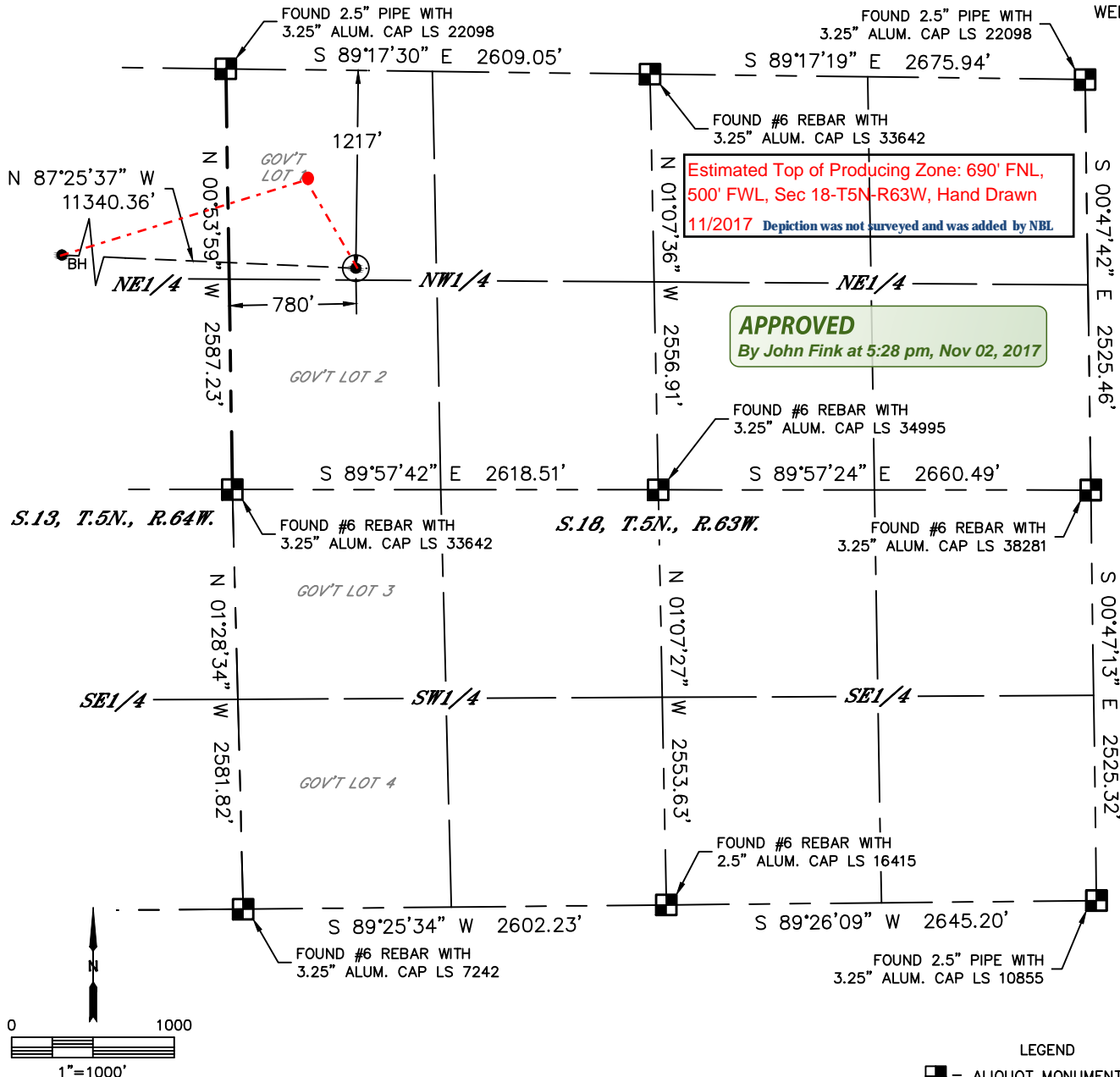


Lat40°, Inc. 6250 W. 10th Street, Unit 2, Greeley, CO 970-515-5294

# WELL LOCATION CERTIFICATE

SLW RANCH STATE B14-679

SECTION: 18  
TOWNSHIP: 5N  
RANGE: 63W  
6TH. P.M.  
WELD COUNTY, CO



CLIENT: NOBLE ENERGY, INC.				LANDMAN: CORY NEIGHBORS			
INSTRUMENT OPERATOR: SCOTT SHERARD				SURVEY DATE: 3/27/2017		SURFACE USE: RANGELAND	
SHL FOOTAGE	SHL LAT°	SHL LONG°	SHL PDOP	SHL ELEV (FT.)	SHL 1/4/1/4	SHL S-T-R	
1217	FNL	780	FWL	40.40276	-104.48632	2.1	4590
						NWNW	18-5-63

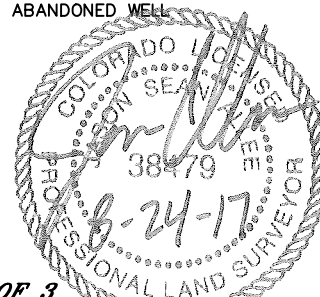
BHL FOOTAGE	BHL LAT°	BHL LONG°	BHL S-T-R
710	FNL	1	FWL
	40.40451	-104.52696	14-5-64

## NOTE:

- 1) Bearings shown are Grid Bearings of the Colorado State Plane Coordinate System, North Zone, North American Datum 1983. The lineal dimensions as contained herein are based upon the "U.S. Survey Foot."
- 2) Distances to section lines measured at 90 degrees from said section lines.
- 3) Ground elevations are based on an observed GPS elevation (NAVD 1988 DATUM).
- 4) Latitude and Longitude shown are (NAD 83 DATUM).
- 5) IMPROVEMENTS: See LOCATION DRAWING for all visible improvements within 500' of oil and gas location.
- 6) This map does not represent a boundary survey.

## LEGEND

- = ALIQUOT MONUMENT AS DESCRIBED
- = CALCULATED POSITION
- = SURFACE HOLE LOCATION (SHL)
- ▲ = ENTRY POINT LOCATION (EP)
- BH = BOTTOM HOLE LOCATION (BHL)
- ⊕ = EXISTING WELL
- ⊖ = ABANDONED WELL



**SHEET 1 OF 3**

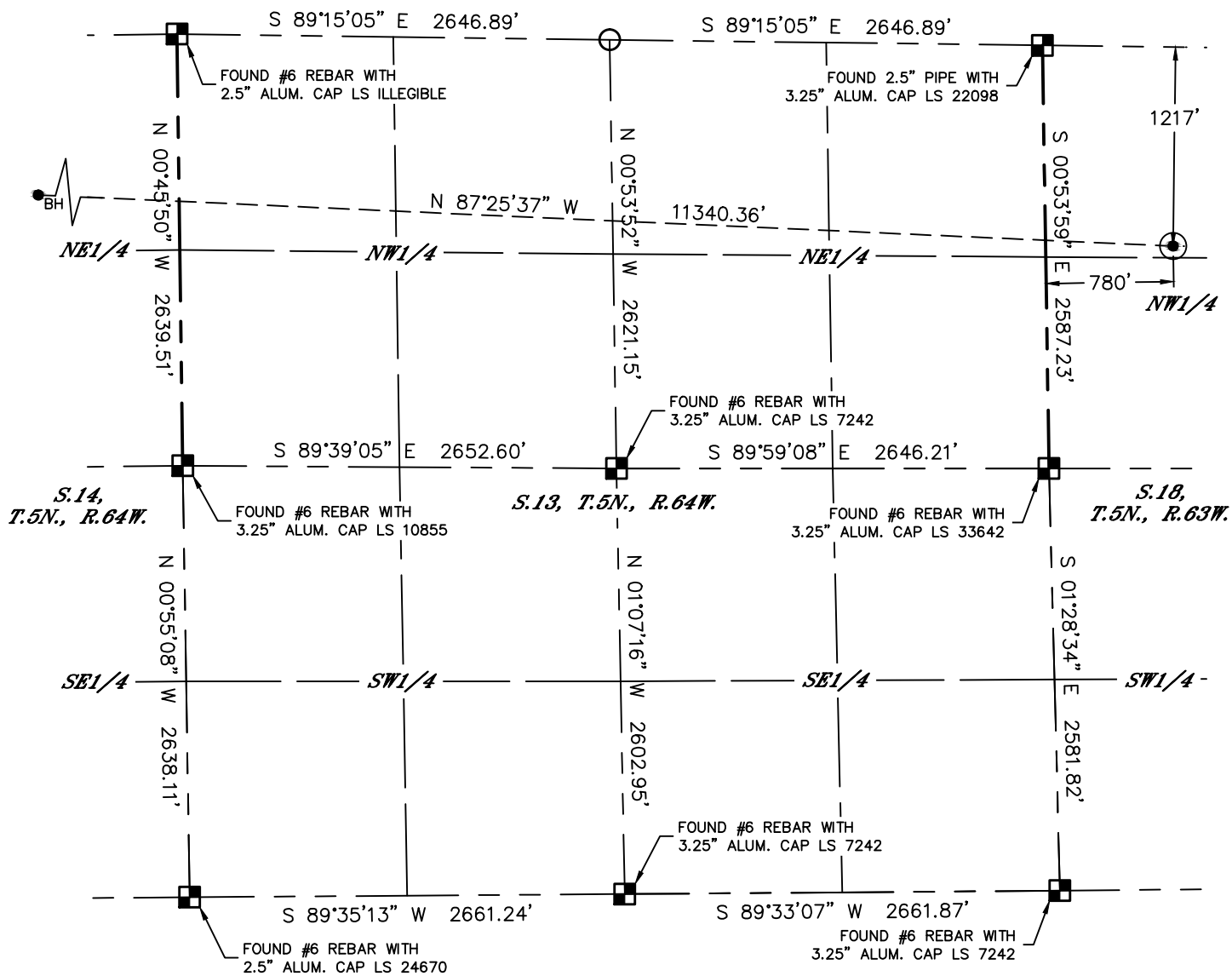
Jason S. Allee—On behalf of Lat40°, Inc.  
Colorado Licensed Professional Land Surveyor No. 38479  
DATE: 8/24/2017  
PROJECT#: 2017024

Lat40°, Inc. 6250 W. 10th Street, Unit 2, Greeley, CO 970-515-5294








# WELL LOCATION CERTIFICATE

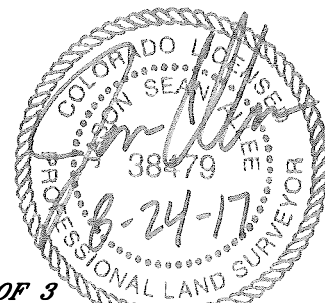
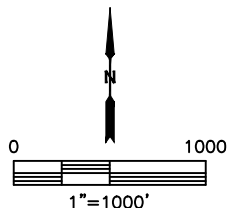
SLW RANCH STATE B14-679

SECTION: 18  
TOWNSHIP: 5N  
RANGE: 63W  
6TH. P.M.  
WELD COUNTY, CO



### LEGEND

-  = ALIQUOT MONUMENT AS DESCRIBED  
 = CALCULATED POSITION  
 = SURFACE HOLE LOCATION (SHL)  
 = ENTRY POINT LOCATION (EP)  
 = BOTTOM HOLE LOCATION (BHL)  
 = EXISTING WELL  
 = ABANDONED WELL



***SHEET 2 OF 3***

Jason S. Allee—On behalf of Lat40, Inc.  
Colorado Licensed Professional Land Surveyor No. 38479  
DATE: 8/24/2017  
PROJECT#: 2017024

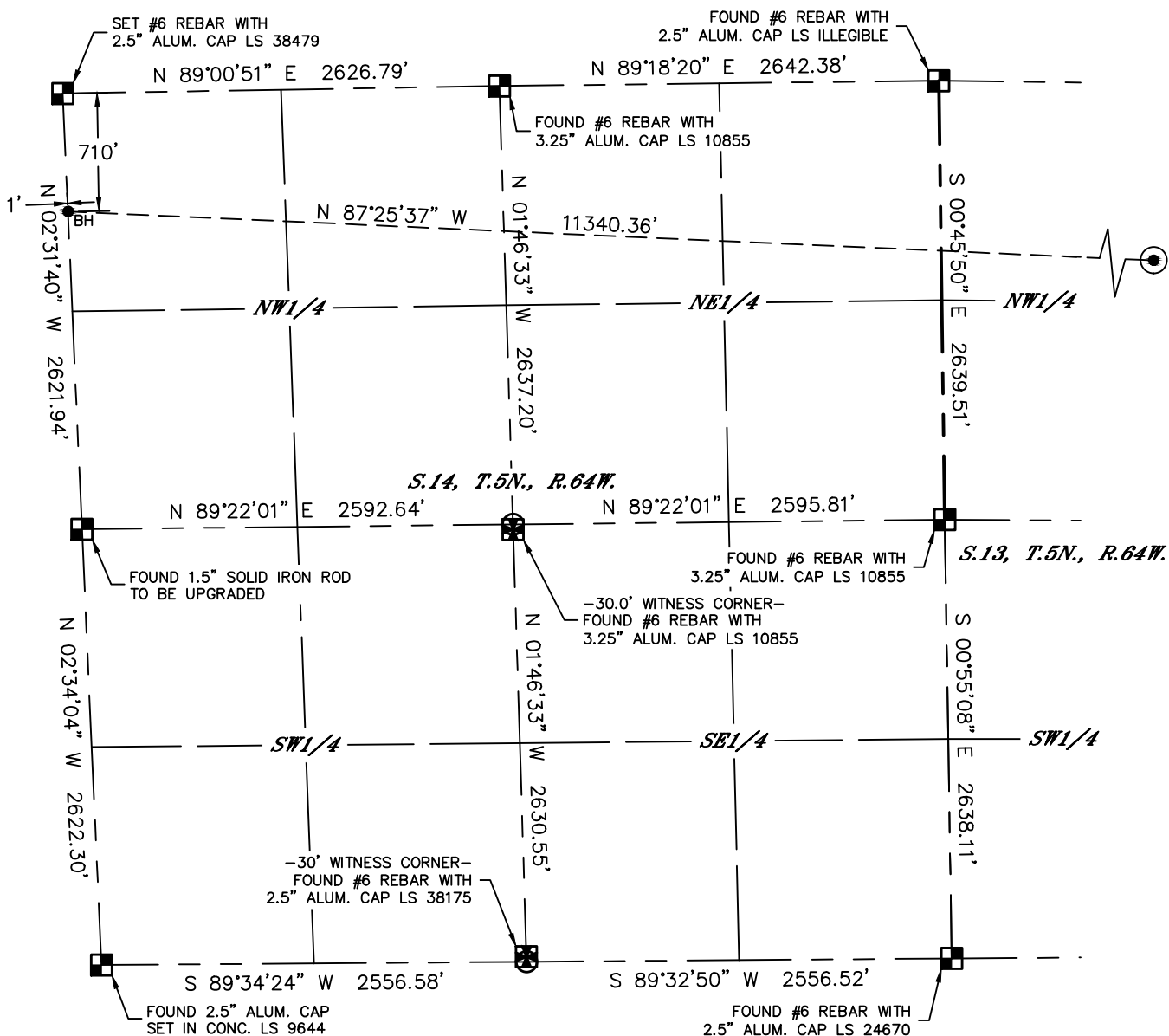


Lat40°, Inc. 6250 W. 10th Street, Unit 2, Greeley, CO 970-515-5294

# WELL LOCATION CERTIFICATE

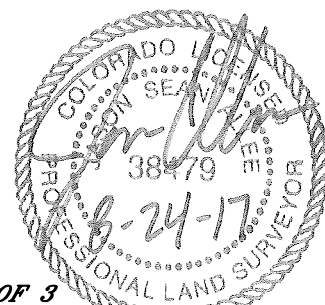
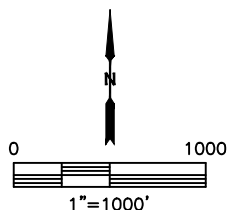
SLW RANCH STATE B14-679

SECTION: 18  
TOWNSHIP: 5N  
RANGE: 63W  
6TH. P.M.  
WELD COUNTY, CO



## LEGEND

- = ALIQUOT MONUMENT AS DESCRIBED
- = CALCULATED POSITION
- ⊙ = SURFACE HOLE LOCATION (SHL)
- ▲ = ENTRY POINT LOCATION (EP)
- <sub>BH</sub> = BOTTOM HOLE LOCATION (BHL)
- ⊕ = EXISTING WELL
- ⊖ = ABANDONED WELL



**SHEET 3 OF 3**

Jason S. Allee—On behalf of Lat40°, Inc.  
Colorado Licensed Professional Land Surveyor No. 38479  
DATE: 8/24/2017  
PROJECT#: 2017024