

M:\co - Well Head Staking\ANAO2N66W23-01 (HENDU) - WELL CERTS & MULTI.dwg, 12/20/2017 4:11:21 PM, Joyme Hobin

T2N, R66W

WELL BORE CONTINUES
INTO SECTION 14

NW COR. SEC. 23
FOUND CAP
ILLEGIBLE

N 1/4 COR. SEC. 23
FOUND 2.5" A.C.
ILLEGIBLE

MATCHLINE
SEE SHEET 2

NE COR. SEC. 23
FOUND #4 REB.
W/2.5" A.C.
PLS ILLEGIBLE

N 89°00'25" E 2658.89'

N 89°00'15" E 2657.88'

HENDU 23-11HZ
SURFACE LOCATION

N 00°07'52" W 2632.21'

N 00°09'13" W 2639.82'(C)

S 00°10'45" E 2647.56'

S 89°10'16" W 2659.82'(C)

S 89°10'16" W 2658.95'(C)

W 1/4 COR. SEC. 23
(CALCULATED POSITION)

C 1/4 COR. SEC. 23
(CALCULATED POSITION)

E 1/4 COR. SEC. 23
FOUND CAP
PLS 86073

N 00°07'52" W 2632.21'

N 00°09'13" W 2639.91'(C)

S 00°09'34" E 2647.59'

SURFACE LOCATION NAD 83
GROUND ELEVATION = 5098.9'
LATITUDE = 40.130221°
LONGITUDE = -104.736538°
HEEL LOCATION NAD 83
LATITUDE = 40.132124°
LONGITUDE = -104.735644°
BOTTOM HOLE LOCATION NAD 83
LATITUDE = 40.132267°
LONGITUDE = -104.717615°
LONGITUDE = -104.43'03.414"

SW COR. SEC. 23
FOUND #6 REB.
W/ 2.5" A.C.
PLS 19585

S 89°20'14" W 2660.77'

S 89°20'12" W 2659.14'

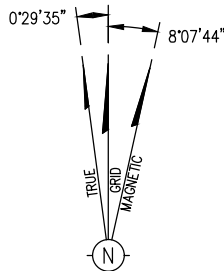
S 1/4 COR. SEC. 23
FOUND 2.5" A.C.
ILLEGIBLE

SE COR. SEC. 23
FOUND #6 REB.
W/ 3.25" A.C.
PLS 28283

I HEREBY CERTIFY THAT THIS WELL LOCATION CERTIFICATE WAS PREPARED BY ME, OR UNDER MY DIRECT SUPERVISION, THAT THE FIELD WORK WAS COMPLETED ON 12/1/2017, THAT IT IS NOT A LAND SURVEY PLAT OR AN IMPROVEMENT SURVEY PLAT, AND THAT IT IS NOT TO BE RELIED UPON FOR ESTABLISHMENT OF FENCE, BUILDING, OR OTHER FUTURE IMPROVEMENT LINES.

AARON A. DEMO
Professional Land Surveyor Registration No. 38285
State of Colorado
FOR AND ON BEHALF OF BASELINE ENGINEERING, INC.

NOTICE
ACCORDING TO COLORADO STATE LAW YOU MUST COMMENCE ANY LEGAL ACTION BASED UPON ANY DEFECT IN THIS SURVEY WITHIN THREE YEARS AFTER YOU FIRST DISCOVER SUCH DEFECT. IN NO EVENT MAY ANY ACTION BASED UPON ANY DEFECT IN THIS SURVEY BE COMMENCED MORE THAN TEN YEARS FROM THE DATE ON THE CERTIFICATION SHOWN HEREON.



NOTE
MAGNETIC NORTH IS CURRENT AS OF 11/28/2017
MAGNETIC NORTH CHANGES WEST 00'06" PER YEAR.
Scale 1" = 1000' ft

NOTES:

1. ● INDICATES SECTION CORNER
2. ○ INDICATES CALCULATED CORNER
3. (C) INDICATES CALCULATED DIMENSION
4. ELEVATION BASED ON NAVD88 GEOID12B)
5. BASIS OF BEARING DERIVED FROM COLORADO COORDINATE SYSTEM OF 1983 NORTH ZONE.
6. ALL MEASURED DISTANCES ARE GRID. COMBINED SCALE FACTOR .99971671 CALCULATED FROM THE NORTHEAST CORNER OF SECTION 23, T2N, R66W
7. OPERATOR: ALLEN SHAFFETT / PDOP = 1.3
8. SEE ADDENDUM TO WELL LOCATION CERTIFICATE FOR EXISTING IMPROVEMENTS WITHIN 500' OF THE WELL PAD.
9. WELL FOOTAGES ARE MEASURED AT RIGHT ANGLES TO THE SECTION LINES.
10. THE BOTTOM OF HOLE BEARS N88°5430"E 5041' FROM THE HEEL LOCATION

WELL PAD - HENDU 23-7HZ

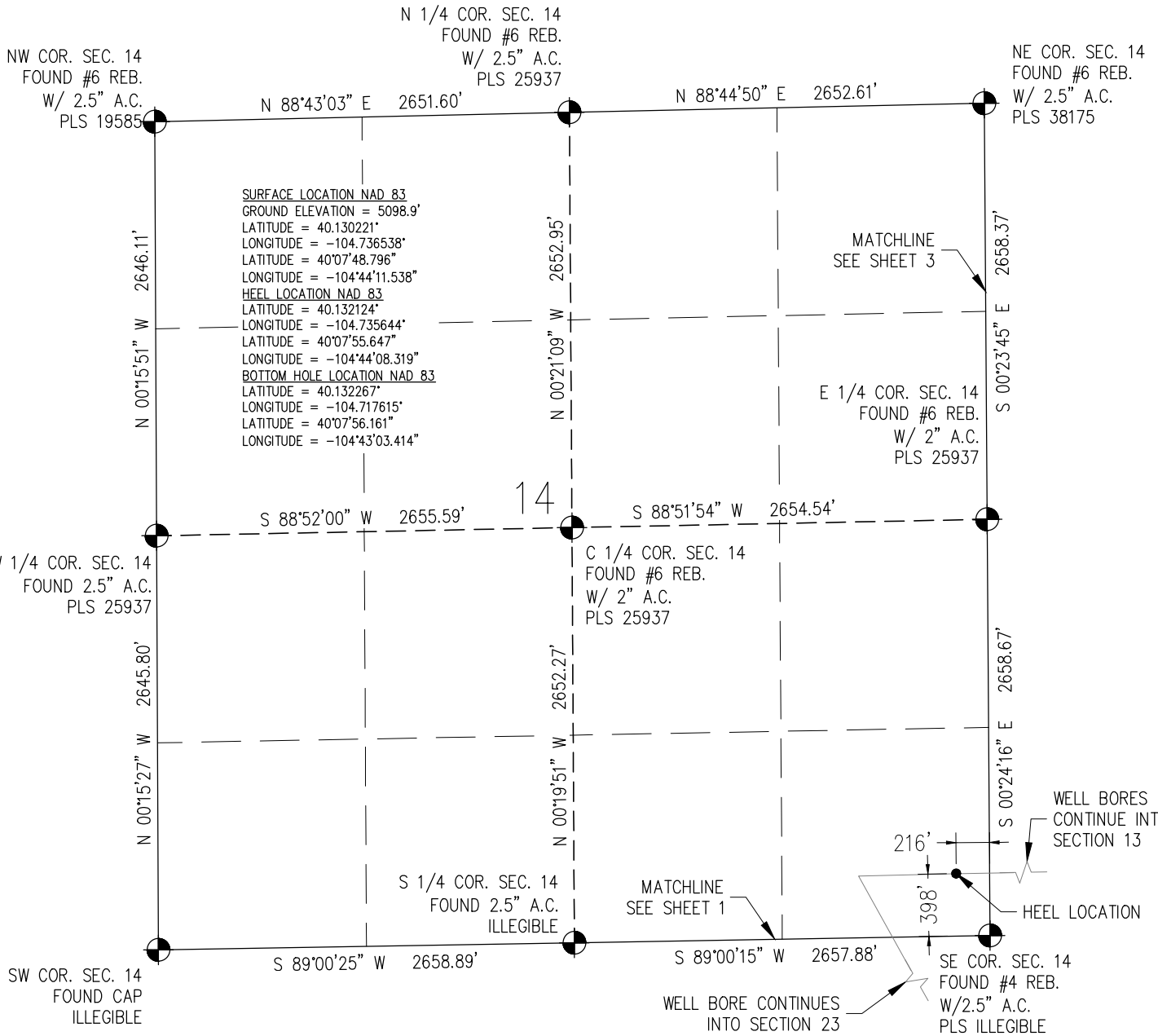
HENDU 23-11HZ
WELL LOCATION CERTIFICATE
293' FNL & 464' FEL HENZ (SURFACE)
LOCATED IN SECTION 23
T2N, R66W, 6TH P.M.
WELD COUNTY, COLORADO
398' FSL & 216' FEL SESE (HEEL)
LOCATED IN SECTION 14
T2N, R66W, 6TH P.M.
WELD COUNTY, COLORADO
413' FSL & 472' FEL SESE (BOTTOM)
LOCATED IN SECTION 13
T2N, R66W, 6TH P.M.
WELD COUNTY, COLORADO

**Kerr-McGee Oil &
Gas Onshore L.P.**
1099 18th Street
Denver, Colorado 80202

DRAWN BY JMH	CHECKED BY AAD
INITIAL SUBMITTAL	12/15/2017
REVISED	12/20/2017
DRAWING SIZE	8.5" X 11"
JOB NO.	ANAO2N66W23-01
SHEET	1 OF 3

BASELINE
Engineering - Planning - Surveying
4007 S. LINCOLN AVENUE, SUITE 405 - LOVELAND, COLORADO 80537
P: 970.353.7800 - F: 970.353.7801 - www.baselinescorp.com

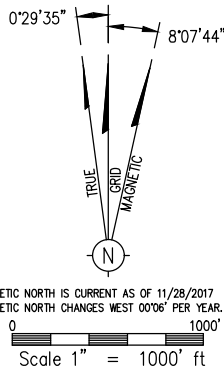
T2N, R66W



I HEREBY CERTIFY THAT THIS WELL LOCATION CERTIFICATE WAS PREPARED BY ME, OR UNDER MY DIRECT SUPERVISION, THAT THE FIELD WORK WAS COMPLETED ON 12/1/2017, THAT IT IS NOT A LAND SURVEY PLAT OR AN IMPROVEMENT SURVEY PLAT, AND THAT IT IS NOT TO BE RELIED UPON FOR ESTABLISHMENT OF FENCE, BUILDING, OR OTHER FUTURE IMPROVEMENT LINES.

AARON A. DEMO
Professional Land Surveyor Registration No. 38285
State of Colorado
FOR AND ON BEHALF OF BASELINE ENGINEERING, INC.

NOTICE
ACCORDING TO COLORADO STATE LAW YOU MUST COMMENCE ANY LEGAL ACTION BASED UPON ANY DEFECT IN THIS SURVEY WITHIN THREE YEARS AFTER YOU FIRST DISCOVER SUCH DEFECT. IN NO EVENT MAY ANY ACTION BASED UPON ANY DEFECT IN THIS SURVEY BE COMMENCED MORE THAN TEN YEARS FROM THE DATE ON THE CERTIFICATION SHOWN HEREON.



NOTES:

1. ● INDICATES SECTION CORNER
2. ○ INDICATES CALCULATED CORNER
3. (C) INDICATES CALCULATED DIMENSION
4. ELEVATION BASED ON NAVD88 GEOID12B)
5. BASIS OF BEARING DERIVED FROM COLORADO COORDINATE SYSTEM OF 1983 NORTH ZONE.
6. ALL MEASURED DISTANCES ARE GRID. COMBINED SCALE FACTOR .99971671 CALCULATED FROM THE NORTHEAST CORNER OF SECTION 23, T2N, R66W
7. OPERATOR: ALLEN SHAFFETT / PDOP = 1.3
8. SEE ADDENDUM TO WELL LOCATION CERTIFICATE FOR EXISTING IMPROVEMENTS WITHIN 500' OF THE WELL PAD.
9. WELL FOOTAGES ARE MEASURED AT RIGHT ANGLES TO THE SECTION LINES.
10. THE BOTTOM OF HOLE BEARS N88°54'30\"E 5041' FROM THE HEEL LOCATION

WELL PAD — HENDU 23—7HZ

HENDU 23—11HZ
WELL LOCATION CERTIFICATE
293' FSL & 464' FEL HOLE (SURFACE)
LOCATED IN SECTION 23
T2N, R66W, 6TH P.M.
WELD COUNTY, COLORADO
398' FSL & 216' FEL SESE (HEEL)
LOCATED IN SECTION 14
T2N, R66W, 6TH P.M.
WELD COUNTY, COLORADO
413' FSL & 472' FEL SESE (BOTTOM)
LOCATED IN SECTION 13
T2N, R66W, 6TH P.M.
WELD COUNTY, COLORADO

**Kerr-McGee Oil &
Gas Onshore L.P.**

1099 18th Street
Denver, Colorado 80202

DRAWN BY	JMH	CHECKED BY	AAD
INITIAL SUBMITTAL	12/15/2017		
REVISED	12/20/2017		
DRAWING SIZE	8.5\" X 11"		
JOB NO.	ANAO2N66W23-01		
SHEET	2 OF 3		

BASELINE
Engineering - Planning - Surveying
4007 S. LINCOLN AVENUE, SUITE 405 • LOVELAND, COLORADO 80537
P: 970.353.7800 • F: 970.353.7801 • www.baselinecorp.com

T2N, R66W

NW COR. SEC. 13
FOUND #6 REB.
W/ 2.5" A.C.
PLS 38175

N 1/4 COR. SEC. 13
FOUND #6 REB.
W/ 2" A.C.
PLS 25937

NE COR. SEC. 13
FOUND #6 REB.
W/ 3.25" A.C.
ILLEGIBLE

MATCHLINE
SEE SHEET 2

SURFACE LOCATION NAD 83
GROUND ELEVATION = 5098.9'
LATITUDE = 40.130221"
LONGITUDE = -104.736538"
LATITUDE = 40°07'48.796"
LONGITUDE = -104°44'11.538"
HEEL LOCATION NAD 83
LATITUDE = 40.132124"
LONGITUDE = -104.735644"
LATITUDE = 40°07'55.647"
LONGITUDE = -104°44'08.319"
BOTTOM HOLE LOCATION NAD 83
LATITUDE = 40.132267"
LONGITUDE = -104.717615"
LATITUDE = 40°07'56.161"
LONGITUDE = -104°43'03.414"

W 1/4 COR. SEC. 13
FOUND #6 REB.
W/ 2" A.C.
PLS 25937

C 1/4 COR. SEC. 13
(CALCULATED POSITION) 13

E 1/4 COR. SEC. 13
FOUND #6 REB.
W/ 2.5" A.C.
PLS 38065

WELL BORES
CONTINUE INTO
SECTION 14

N 81°16'22" E MAGNETIC
N 89°24'06" E TRUE
N 88°54'30" E 5041' GRID

BOTTOM HOLE
413' FNL & 472' FEL
413'
472'

SW COR. SEC. 13
FOUND #4 REB.
W/2.5" A.C.
ILLEGIBLE

S 89°04'35" W 2648.83'

S 1/4 COR. SEC. 13
FOUND #6 REB.
W/ 3" A.C.
PLS 38512

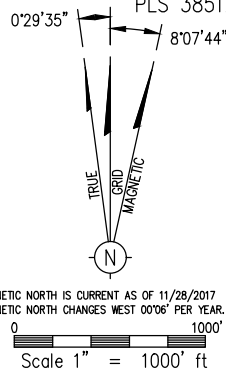
S 89°04'43" W 2649.26'

SE COR. SEC. 13
FOUND 2.5" A.C.
ILLEGIBLE

I HEREBY CERTIFY THAT THIS WELL LOCATION CERTIFICATE WAS PREPARED BY ME, OR UNDER MY DIRECT SUPERVISION, THAT THE FIELD WORK WAS COMPLETED ON 12/1/2017, THAT IT IS NOT A LAND SURVEY PLAT OR AN IMPROVEMENT SURVEY PLAT, AND THAT IT IS NOT TO BE RELIED UPON FOR ESTABLISHMENT OF FENCE, BUILDING, OR OTHER FUTURE IMPROVEMENT LINES.

AARON A. DEMO
Professional Land Surveyor Registration No. 38285
State of Colorado
FOR AND ON BEHALF OF BASELINE ENGINEERING, INC.

NOTICE
ACCORDING TO COLORADO STATE LAW YOU MUST COMMENCE ANY LEGAL ACTION BASED UPON ANY DEFECT IN THIS SURVEY WITHIN THREE YEARS AFTER YOU FIRST DISCOVER SUCH DEFECT. IN NO EVENT MAY ANY ACTION BASED UPON ANY DEFECT IN THIS SURVEY BE COMMENCED MORE THAN TEN YEARS FROM THE DATE ON THE CERTIFICATION SHOWN HEREON.



NOTES:

1. ● INDICATES SECTION CORNER
2. ○ INDICATES CALCULATED CORNER
3. (C) INDICATES CALCULATED DIMENSION
4. ELEVATION BASED ON NAVD88 GEOID12B)
5. BASIS OF BEARING DERIVED FROM COLORADO COORDINATE SYSTEM OF 1983 NORTH ZONE.
6. ALL MEASURED DISTANCES ARE GRID. COMBINED SCALE FACTOR .99971671 CALCULATED FROM THE NORTHEAST CORNER OF SECTION 23, T2N, R66W
7. OPERATOR: ALLEN SHAFFETT / PDOP = 1.3
8. SEE ADDENDUM TO WELL LOCATION CERTIFICATE FOR EXISTING IMPROVEMENTS WITHIN 500' OF THE WELL PAD.
9. WELL FOOTAGES ARE MEASURED AT RIGHT ANGLES TO THE SECTION LINES.
10. THE BOTTOM OF HOLE BEARS N88°54'30"E 5041' FROM THE HEEL LOCATION

WELL PAD - HENDU 23-7HZ

HENDU 23-11HZ
WELL LOCATION CERTIFICATE
293' FNL & 464' FEL NENE (SURFACE)
LOCATED IN SECTION 23
T2N, R66W, 6TH P.M.
WELD COUNTY, COLORADO
398' FSL & 216' FEL SESE (HEEL)
LOCATED IN SECTION 14
T2N, R66W, 6TH P.M.
WELD COUNTY, COLORADO
413' FSL & 472' FEL SESE (BOTTOM)
LOCATED IN SECTION 13
T2N, R66W, 6TH P.M.
WELD COUNTY, COLORADO

**Kerr-McGee Oil &
Gas Onshore L.P.**

1099 18th Street
Denver, Colorado 80202

DRAWN BY JMH	CHECKED BY AAD
INITIAL SUBMITTAL 12/15/2017	
REVISED 12/20/2017	
DRAWING SIZE 8.5" X 11"	
JOB NO. ANAO2N66W23-01	
SHEET 3 OF 3	

BASELINE
Engineering - Planning - Surveying
4007 S. LINCOLN AVENUE, SUITE 405 - LOVELAND, COLORADO 80537
P: 970.353.7800 - F: 970.353.7801 - www.baselinecorp.com