



Kerr-McGee Oil & Gas Onshore LP

A subsidiary of Anadarko Petroleum Corporation

1099 18th Street
Denver, CO 80202
720-929-6000

January 29, 2018

Matt Lepore
Director, Colorado Oil and Gas Conservation Commission
Department of Natural Resources
The Chancery Building
1120 Lincoln Street, Suite 801
Denver, CO 80203

Re: **30 Day Certification Letter - 318A.e**
POLO 24-6HZ (Doc No. 401479369)
Township 2 North, Range 66 West
Section 24: NWSE
Unit Acreage: 560 Acres
Proposed Spacing Unit:
02N66W SEC 24: SE, S2NE;
02N66W SEC 25: E2
Weld County, Colorado

Dear Director Lepore:

Kerr McGee Oil and Gas Onshore LP ("KMG") hereby certifies that KMG owns one hundred percent (100%) of the leasehold interest in the mineral rights in the proposed spacing unit. KMG hereby respectfully requests approval of this boundary well.

If you have any questions or issues regarding this permit, please contact me at (720) 929-6907.

Sincerely,

Kerr-McGee Oil and Gas Onshore LP

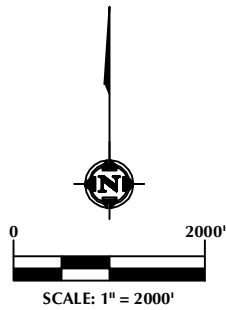
A handwritten signature in black ink, appearing to read 'John Piekara', written over a horizontal line.

John Piekara
Sr. Regulatory Analyst

Enclosure

DISTANCE FROM COMPLETED
PORTION OF WELLBORE TO
NEAREST UNIT BOUNDARY= 465'

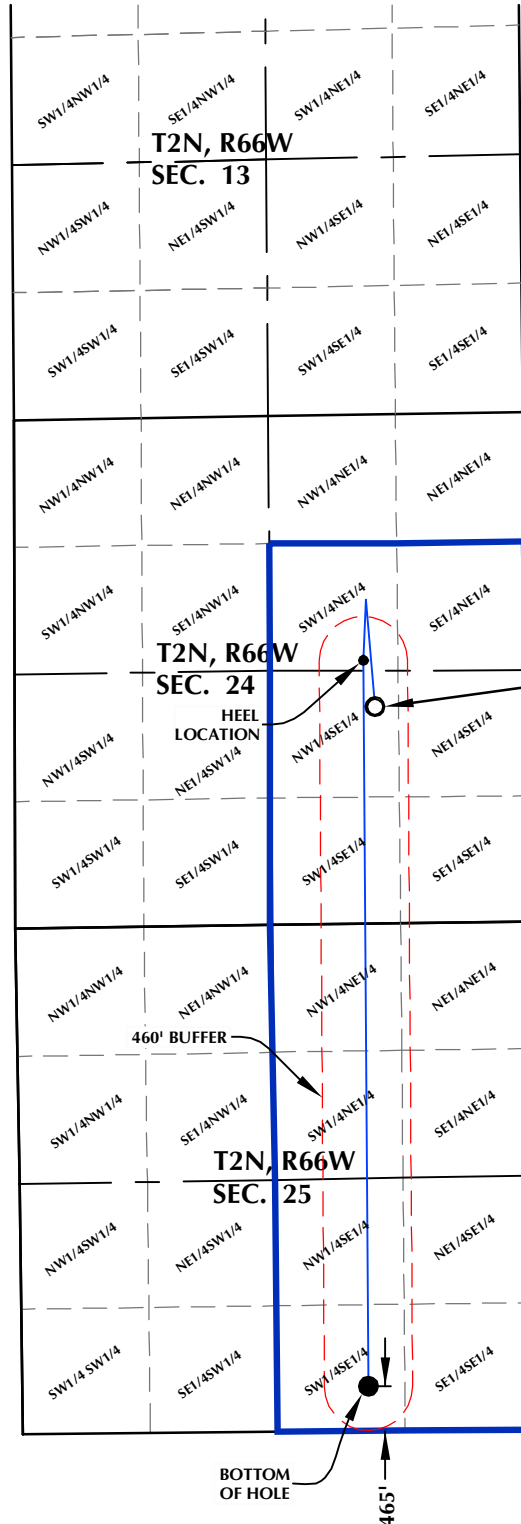
POLO 24-6HZ WELLBORE SPACING UNIT



SURFACE LOCATION: NAD 83
GROUND ELEVATION= 5060.3'
LATITUDE= 40.122759°
LONGITUDE= -104.721510°
LATITUDE= 40°07'21.933"
LONGITUDE= -104°43'17.436"
HEEL LOCATION: NAD 83
LATITUDE= 40.124088°
LONGITUDE= -104.721929°
LATITUDE= 40°07'26.717"
LONGITUDE= -104°43'18.946"
BOTTOM HOLE LOCATION: NAD 83
LATITUDE= 40.103330°
LONGITUDE= -104.721976°
LATITUDE= 40°06'11.988"
LONGITUDE= -104°43'19.114"

NOTES:

1. DRAWING LATITUDE AND LONGITUDE COORDINATES ARE NAD 83 (2011)(EPOCH:2010)
2. ELEVATION BASED ON NAVD88 (GEOID12B)
3. BASIS OF BEARING DERIVED FROM COLORADO COORDINATE SYSTEM OF 1983 NORTH ZONE.
4. ALL MEASURED DISTANCES ARE GRID.
COMBINED SCALE FACTOR: .99972064
CALCULATED FROM THE S. 1/4 CORNER OF SECTION 24, T2N, R66W



PROPOSED WELLBORE
SPACING UNIT

POLO 24-6HZ
SURFACE LOCATION

460' BUFFER

BOTTOM
OF HOLE

465'

WELL PAD - POLO 24-6HZ

POLO 24-6HZ
WELLBORE SPACING UNIT
2258' FSL & 1575' FEL NWSE (SURFACE)
2558' FNL & 1690' FEL SWNE (HEEL)
LOCATED IN SECTION 24
465' FSL & 1707' FEL SWSE (BOTTOM)
LOCATED IN SECTION 25
T2N, R66W, 6TH P.M.
WELD COUNTY, COLORADO

**Kerr-McGee Oil &
Gas Onshore L.P.**
1099 18th Street
Denver, Colorado 80202



CONSULTING, LLC

SHERIDAN OFFICE
1095 Saberton Avenue
Sheridan, Wyoming 82801
Phone 307-674-0609

LOVELAND OFFICE
1635 Foxtrail Drive, Suite 204
Loveland, Colorado 80538
Phone 970-776-4331

DRAFTED BY:	LMO	CHECKED BY:	RKF
DATE DRAFTED:	10/12/17	DATE SURVEYED:	9/20/17
REVISED:		FILE NAME:	17-72