

T2N, R66W

N. 1/4 COR.
SEC. 24, T2N, R66W
SET 2 1/2" ALUM. CAP
P.L.S. NO. 38512

NW. COR.
SEC. 24, T2N, R66W
FOUND 2 1/2" ALUM. CAP
P.L.S. NO. 28656

NE. COR.
SEC. 24, T2N, R66W
FOUND 2 1/2" ALUM. CAP
ILLEGIBLE

S 89°04'37" W 2648.70' (M)

S 89°04'47" W 2649.33' (M)

N 00°10'37" W 2647.64' (M)

SURFACE LOCATION: NAD 83
GROUND ELEVATION= 5060.3'
LATITUDE= 40.122759°
LONGITUDE= -104.721510°
LATITUDE= 40°07'21.933"
LONGITUDE= -104°43'17.436"
HEEL LOCATION: NAD 83
LATITUDE= 40.124088°
LONGITUDE= -104.721929°
LATITUDE= 40°07'26.717"
LONGITUDE= -104°43'18.946"
BOTTOM HOLE LOCATION: NAD 83
LATITUDE= 40.103330°
LONGITUDE= -104.721976°
LATITUDE= 40°06'11.988"
LONGITUDE= -104°43'19.114"

N 00°28'15" W
2649.70' (M)

2558'

N 00°45'38" W 2688.63' (M)

W. 1/4 COR.
SEC. 24, T2N, R66W
FOUND 2 1/2" ALUM. CAP
P.L.S. NO. 36073

S 89°07'27" W
2662.27' (M)

CENTER 1/4 COR.
SEC. 24, T2N, R66W
FOUND 3 1/4" ALUM. CAP
P.L.S. NO. 28649

E. 1/4 COR.
SEC. 24, T2N, R66W
FOUND 2 1/2" ALUM. CAP
P.L.S. NO. 38140

1690'

S 89°55'08" W
2662.90' (M)

1575'

HEEL LOCATION

N 00°09'29" W 2647.67' (M)

N 00°28'15" W
2649.37' (M)

S 00°24'15" E 7562' GRID
S 00°05'56" W TRUE
S 08°02'15" E MAGNETIC

POLO 24-6HZ
SURFACE LOCATION

N 00°45'05" W 2613.87' (M)

SW. COR.
SEC. 24, T2N, R66W
FOUND 3 1/4" ALUM. CAP
ILLEGIBLE

S 89°09'49" W 2676.70' (M)

S. 1/4 COR.
SEC. 24, T2N, R66W
FOUND 3 1/4" ALUM. CAP
ILLEGIBLE

S 89°09'22" W 2675.69' (M)

SE. COR.
SEC. 24, T2N, R66W
FOUND 3 1/4" BRASS CAP
P.L.S. NO. 26595

MATCH LINE
SEE SHEET 2

30'11" 7'38"

WELLBORE CONTINUES
INTO SECTION 25

CERTIFICATE OF SURVEYOR:

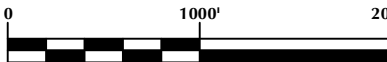
THIS IS TO CERTIFY THAT THE ABOVE PLAT WAS PREPARED FROM FIELD NOTES OF ACTUAL SURVEYS MADE BY ME OR UNDER MY SUPERVISION AND THAT THE SAME ARE TRUE AND CORRECT TO THE BEST OF MY KNOWLEDGE AND BELIEF. THIS CERTIFICATE DOES NOT REPRESENT A LAND SURVEY THAT OR IMPROVEMENT SURVEY PLAT AS DEFINED BY C.S. 38-50-102 AND CANNOT BE RELIED UPON TO DETERMINE OWNERSHIP.

Randall K. French
38512
PROFESSIONAL LAND SURVEYOR

RANDALL K. FRENCH
10/12/17
COLORADO REGISTRATION NUMBER 38512

NOTICE:
ACCORDING TO COLORADO STATE LAW YOU MUST COMMENCE LEGAL ACTION BASED UPON ANY DEFECT IN THIS SURVEY WITHIN THREE YEARS AFTER YOU FIRST DISCOVER SUCH DEFECT. IN NO EVENT MAY ANY ACTION BASED UPON ANY DEFECT IN THIS SURVEY BE COMMENCED MORE THAN TEN YEARS FROM THE DATE ON THE CERTIFICATION SHOWN HEREON.

NOTE:
MAGNETIC NORTH IS CURRENT AS OF 10/4/2017.
MAGNETIC NORTH CHANGES WEST 0°06' PER YEAR.



SCALE: 1" = 1000'

NOTES:

- ▲ INDICATES SECTION CORNER
- INDICATES CALCULATED CORNER
- ELEVATION BASED ON NAVD88 (GEOID12B)
- BASIS OF BEARING DERIVED FROM COLORADO COORDINATE SYSTEM OF 1983 NORTH ZONE.
- ALL MEASURED DISTANCES ARE GRID.
COMBINED SCALE FACTOR: .99972064 CALCULATED FROM THE S. 1/4 CORNER OF SECTION 24, T2N, R66W
- OPERATOR: PRESTON KNUSTEN / PDOP = 1.9
- SEE ADDENDUM TO WELL LOCATION CERTIFICATE FOR EXISTING IMPROVEMENTS WITHIN 500' OF THE WELL PAD.
- WELL FOOTAGES ARE MEASURED AT RIGHT ANGLES TO THE SECTION LINES.
- THE BOTTOM OF HOLE BEARS S00°24'15"E, 7562' FROM THE HEEL LOCATION.

WELL PAD - POLO 24-6HZ

POLO 24-6HZ
WELL LOCATION CERTIFICATE
2258' FSL & 1575' FEL NWSE (SURFACE)
2558' FNL & 1690' FEL SWNE (HEEL)
LOCATED IN SECTION 24
465' FSL & 1707' FEL SWSE (BOTTOM)
LOCATED IN SECTION 25
T2N, R66W, 6TH P.M.
WELD COUNTY, COLORADO

**Kerr-McGee Oil &
Gas Onshore L.P.**
1099 18th Street
Denver, Colorado 80202



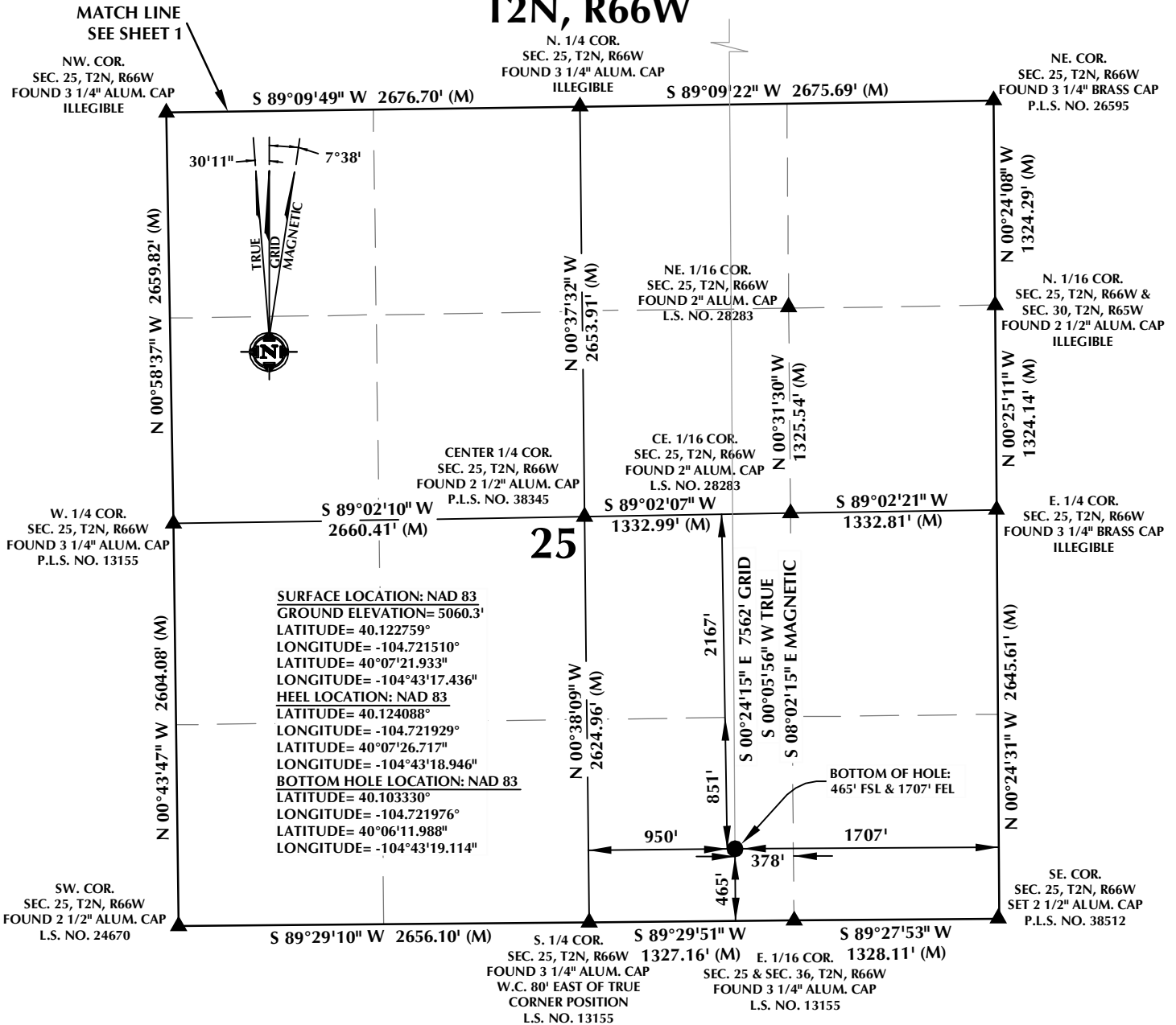
CONSULTING, LLC

SHERIDAN OFFICE
1095 Saberton Avenue
Sheridan, Wyoming 82801
Phone 307-674-0609

LOVELAND OFFICE
1635 Foxtrail Drive, Suite 204
Loveland, Colorado 80538
Phone 970-776-4331

DRAFTED BY:	LMO	CHECKED BY:	RKF	SHEET NO:
DATE DRAFTED:	10/12/17	DATE SURVEYED:	9/20/17	1
REVISED:		FILE NAME:	17-72	1 OF 2

T2N, R66W



CERTIFICATE OF SURVEYOR:

THIS IS TO CERTIFY THAT THE ABOVE PLAT WAS PREPARED FROM FIELD NOTES OF ACTUAL SURVEYS MADE BY ME OR UNDER MY SUPERVISION AND THAT THE SAME ARE TRUE AND CORRECT TO THE BEST OF MY KNOWLEDGE AND BELIEF. THIS CERTIFICATE DOES NOT REPRESENT A LAND SURVEY OR IMPROVEMENT SURVEY PLAT AS DEFINED BY C.S. 38-5-102 AND CANNOT BE RELIED UPON TO DETERMINE OWNERSHIP.

Randall K. French
38512
PROFESSIONAL LAND SURVEYOR
10/12/17

RANDALL K. FRENCH
PROFESSIONAL LAND SURVEYOR
COLORADO REGISTRATION NUMBER 38512

NOTICE:
ACCORDING TO COLORADO STATE LAW YOU MUST OBTAIN A LEGAL ACTION BASED UPON ANY DEFECT IN THIS SURVEY WITHIN THREE YEARS AFTER YOU FIRST DISCOVER SUCH DEFECT. IN NO EVENT MAY ANY ACTION BASED UPON ANY DEFECT IN THIS SURVEY BE COMMENCED MORE THAN TEN YEARS FROM THE DATE ON THE CERTIFICATION SHOWN HEREON.

NOTES:

- INDICATES SECTION CORNER
- INDICATES CALCULATED CORNER
- ELEVATION BASED ON NAVD88 (GEOID12B)
- BASIS OF BEARING DERIVED FROM COLORADO COORDINATE SYSTEM OF 1983 NORTH ZONE.
- ALL MEASURED DISTANCES ARE GRID.
COMBINED SCALE FACTOR: .99972064 CALCULATED FROM THE S. 1/4 CORNER OF SECTION 24, T2N, R66W
- OPERATOR: PRESTON KNUSTEN / PDOP = 1.9
- SEE ADDENDUM TO WELL LOCATION CERTIFICATE FOR EXISTING IMPROVEMENTS WITHIN 500' OF THE WELL PAD.
- WELL FOOTAGES ARE MEASURED AT RIGHT ANGLES TO THE SECTION LINES.
- THE BOTTOM OF HOLE BEARS S00°24'15"E, 7562' FROM THE HEEL LOCATION.

WELL PAD - POLO 24-6HZ

POLO 24-6HZ
WELL LOCATION CERTIFICATE
2258' FSL & 1575' FEL NWSE (SURFACE)
2558' FNL & 1690' FEL SWNE (HEEL)
LOCATED IN SECTION 24
465' FSL & 1707' FEL SWSE (BOTTOM)
LOCATED IN SECTION 25
T2N, R66W, 6TH P.M.
WELD COUNTY, COLORADO

**Kerr-McGee Oil &
Gas Onshore L.P.**

1099 18th Street
Denver, Colorado 80202



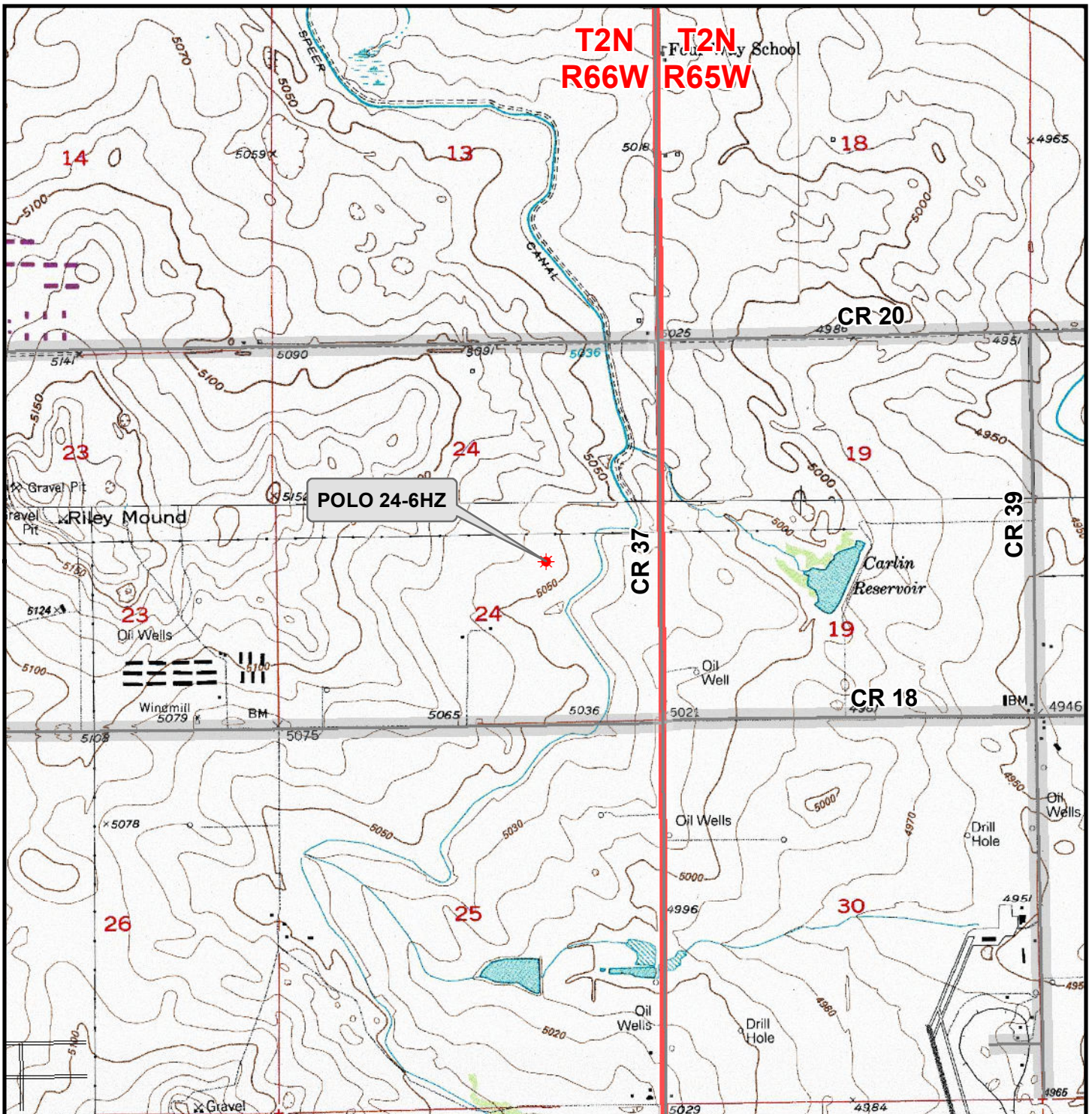
CONSULTING, LLC

SHERIDAN OFFICE
1095 Saberton Avenue
Sheridan, Wyoming 82801
Phone 307-674-0609

LOVELAND OFFICE
1635 Foxtrail Drive, Suite 204
Loveland, Colorado 80538
Phone 970-776-4331

DRAFTED BY:	LMO	CHECKED BY:	RKF	SHEET NO:
DATE DRAFTED:	10/12/17	DATE SURVEYED:	9/20/17	2
REVISED:		FILE NAME:	17-72	2 OF 2

K:\ANADARKO\2017\2017_72_POLO_T2N_R66W_SEC_24\GIS\Maps_ABC\POLO 24-6HZ\POLO 24-6HZ.mxd 10/11/2017 3:43:48 PM



Legend

- ★ Well - Fee - Proposed === Road - Primitive - Existing — Road - County - Existing
— Road - Improved - Existing — Road - Highway - Existing

WELL PAD - POLO 24-6HZ
GENERAL LOCATION MAP
POLO 24-6HZ
LOCATED IN SECTION 24
T2N, R66W, 6th P.M.
WELD COUNTY, COLORADO

**Kerr-McGee Oil &
Gas Onshore L.P.**

1099 18th Street
Denver, Colorado 80202



CONSULTING, LLC

SHERIDAN OFFICE
1095 Saberton Avenue
Sheridan, Wyoming 82801
Phone 307-674-0609

LOVELAND OFFICE
1635 Foxtail Drive, Suite 204
Loveland, Colorado 80538
Phone 970-776-4331



SCALE: 1" = 2,000ft

NAD83 CO-Nft

DRAWN: DP

DATE: 12 Oct 2017

REVISED:

DATE: