

Weld County, Colorado

Section 06-T07N-R64W

Almont 5-05-03L

plan1

Section Details

Sec	MD	Inc	Azi	TVD	+N/-S	+E/-W	Dleg	VSect	Annotation
1	0.00	0.00	0.00	0.00	0.00	0.00	0.00	0.00	
2	3000.00	0.00	0.00	3000.00	0.00	0.00	0.00	0.00	KOP Begin 1°/100' build
3	3912.85	9.13	153.90	3908.99	-65.17	31.92	1.00	34.73	Begin 9.13° tangent
4	6722.29	9.13	153.90	6682.85	-465.44	228.00	0.00	248.04	Begin 10°/100' build/turn
5	7582.96	90.00	89.51	7211.00	-537.12	800.23	10.00	822.86	Begin 90.00° lateral
6	17232.95	90.00	89.51	7211.00	-455.39	10449.88	0.00	10459.79	PBHL/TD 17232.95 MD/7211.00 TVD

DESIGN TARGET DETAILS

Name	TVD	+N/-S	+E/-W	Northing	Easting	Latitude	Longitude
Almont 5-05-03L LP 1844 FNL 470 FEL	7211.00	-537.12	800.23	14746992.40	1756658.50	40.60408271	-104.58121304
Almont 5-05-03L PBHL 1844 FNL 470 FWL	7211.00	-455.39	10449.88	14747119.72	1766307.63	40.60430104	-104.54644855

Almont 5-05-03L			
Surf loc: 1297 FNL 325 FEL Section 06-T08N-R64W			
NAD83 Colorado - HARN			
Universal Transverse Mercator (US Survey Feet)			
Zone 13N (108 W to 102 W)			
RKB=5001+24 @ 5025.00ft			
Northing	Easting	Latitude	Longitude
14747525.73	1755855.74	40.60555759	-104.58409601

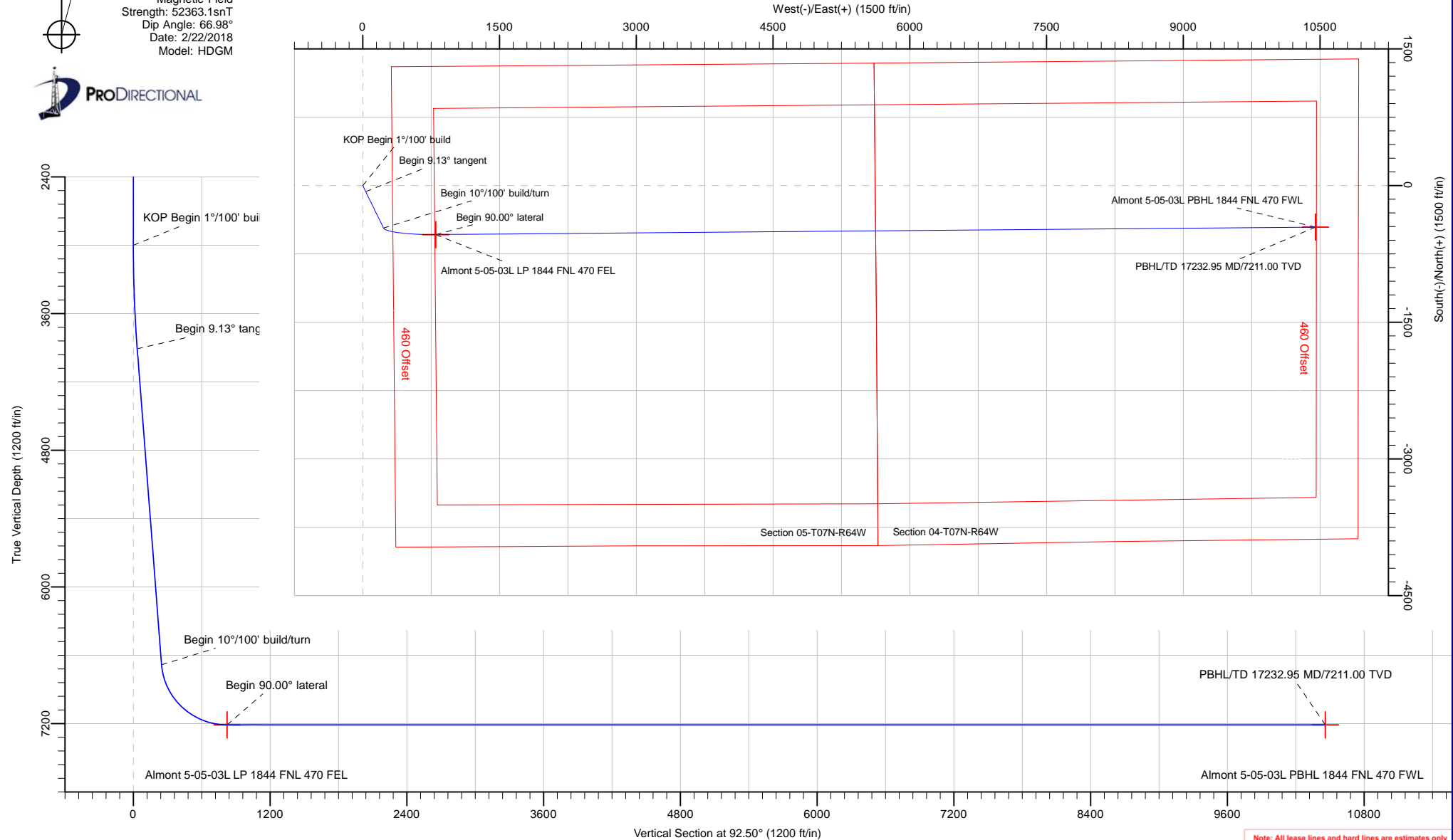


Azimuths to True North
Magnetic North: 8.00°

Magnetic Field
Strength: 52363.1snT
Dip Angle: 66.98°
Date: 2/22/2018
Model: HDGM

Azimuth Corrections:

To convert a Magnetic Direction to a True Direction, Add 8.00° East



Note: All lease lines and hard lines are estimates only and are subject to customers approval.

Database:	DB_Jul2216dt_v14	Local Co-ordinate Reference:	Well Almont 5-05-03L
Company:	Confluence Resources	TVD Reference:	RKB=5001+24 @ 5025.00ft
Project:	Weld County, Colorado	MD Reference:	RKB=5001+24 @ 5025.00ft
Site:	Section 06-T07N-R64W	North Reference:	True
Well:	Almont 5-05-03L	Survey Calculation Method:	Minimum Curvature
Wellbore:	Original Hole		
Design:	plan1		

Project	Weld County, Colorado		
Map System:	Universal Transverse Mercator (US Survey Feet)	System Datum:	Mean Sea Level
Geo Datum:	NAD83 Colorado - HARN		
Map Zone:	Zone 13N (108 W to 102 W)		

Site		Section 06-T07N-R64W			
Site Position:		Northing:	14,746,184.54 usft	Latitude:	40.60187654
From:	Map	Easting:	1,755,730.03 usft	Longitude:	-104.58457171
Position Uncertainty:	0.00 ft	Slot Radius:	13-3/16 "	Grid Convergence:	0.27 °

Well	Almont 5-05-03L, Surf loc: 1297 FNL 325 FEL Section 06-T08N-R64W					
Well Position	+N/-S	1,340.58 ft	Northing:	14,747,525.73 usft	Latitude:	40.60555759
	+E/-W	132.04 ft	Easting:	1,755,855.74 usft	Longitude:	-104.58409601
Position Uncertainty		0.00 ft	Wellhead Elevation:		Ground Level:	5,001.00 ft

Wellbore	Original Hole				
Magnetics	Model Name	Sample Date	Declination (°)	Dip Angle (°)	Field Strength (nT)
	HDGM	2/22/2018	8.00	66.98	52,363.10000000

Design	plan1			
Audit Notes:				
Version:	Phase:	PLAN	Tie On Depth:	0.00
Vertical Section:	Depth From (TVD) (ft)	+N/-S (ft)	+E/-W (ft)	Direction (°)
	0.00	0.00	0.00	92.50

Plan Survey Tool Program	Date	2/22/2018		
Depth From (ft)	Depth To (ft)	Survey (Wellbore)	Tool Name	Remarks
1	0.00	17,232.95	plan1 (Original Hole)	

Plan Sections										
Measured Depth (ft)	Inclination (°)	Azimuth (°)	Vertical Depth (ft)	+N/-S (ft)	+E/-W (ft)	Dogleg Rate (°/100ft)	Build Rate (°/100ft)	Turn Rate (°/100ft)	TFO (°)	Target
0.00	0.00	0.00	0.00	0.00	0.00	0.00	0.00	0.00	0.00	
3,000.00	0.00	0.00	3,000.00	0.00	0.00	0.00	0.00	0.00	0.00	
3,912.85	9.13	153.90	3,908.99	-65.17	31.92	1.00	1.00	0.00	153.90	
6,722.29	9.13	153.90	6,682.85	-465.44	228.00	0.00	0.00	0.00	0.00	
7,582.97	90.00	89.51	7,211.00	-537.12	800.23	10.00	9.40	-7.48	-64.67	Almont 5-05-03L LP 1
17,232.95	90.00	89.51	7,211.00	-455.39	10,449.88	0.00	0.00	0.00	0.00	Almont 5-05-03L PBH

Database:	DB_Jul2216dt_v14	Local Co-ordinate Reference:	Well Almont 5-05-03L
Company:	Confluence Resources	TVD Reference:	RKB=5001+24 @ 5025.00ft
Project:	Weld County, Colorado	MD Reference:	RKB=5001+24 @ 5025.00ft
Site:	Section 06-T07N-R64W	North Reference:	True
Well:	Almont 5-05-03L	Survey Calculation Method:	Minimum Curvature
Wellbore:	Original Hole		
Design:	plan1		

Planned Survey									
Measured Depth (ft)	Inclination (°)	Azimuth (°)	Vertical Depth (ft)	+N/-S (ft)	+E/-W (ft)	Vertical Section (ft)	Dogleg Rate (°/100ft)	Build Rate (°/100ft)	Turn Rate (°/100ft)
0.00	0.00	0.00	0.00	0.00	0.00	0.00	0.00	0.00	0.00
100.00	0.00	0.00	100.00	0.00	0.00	0.00	0.00	0.00	0.00
200.00	0.00	0.00	200.00	0.00	0.00	0.00	0.00	0.00	0.00
300.00	0.00	0.00	300.00	0.00	0.00	0.00	0.00	0.00	0.00
400.00	0.00	0.00	400.00	0.00	0.00	0.00	0.00	0.00	0.00
500.00	0.00	0.00	500.00	0.00	0.00	0.00	0.00	0.00	0.00
600.00	0.00	0.00	600.00	0.00	0.00	0.00	0.00	0.00	0.00
700.00	0.00	0.00	700.00	0.00	0.00	0.00	0.00	0.00	0.00
800.00	0.00	0.00	800.00	0.00	0.00	0.00	0.00	0.00	0.00
900.00	0.00	0.00	900.00	0.00	0.00	0.00	0.00	0.00	0.00
1,000.00	0.00	0.00	1,000.00	0.00	0.00	0.00	0.00	0.00	0.00
1,100.00	0.00	0.00	1,100.00	0.00	0.00	0.00	0.00	0.00	0.00
1,200.00	0.00	0.00	1,200.00	0.00	0.00	0.00	0.00	0.00	0.00
1,300.00	0.00	0.00	1,300.00	0.00	0.00	0.00	0.00	0.00	0.00
1,400.00	0.00	0.00	1,400.00	0.00	0.00	0.00	0.00	0.00	0.00
1,500.00	0.00	0.00	1,500.00	0.00	0.00	0.00	0.00	0.00	0.00
1,600.00	0.00	0.00	1,600.00	0.00	0.00	0.00	0.00	0.00	0.00
1,700.00	0.00	0.00	1,700.00	0.00	0.00	0.00	0.00	0.00	0.00
1,800.00	0.00	0.00	1,800.00	0.00	0.00	0.00	0.00	0.00	0.00
1,900.00	0.00	0.00	1,900.00	0.00	0.00	0.00	0.00	0.00	0.00
2,000.00	0.00	0.00	2,000.00	0.00	0.00	0.00	0.00	0.00	0.00
2,100.00	0.00	0.00	2,100.00	0.00	0.00	0.00	0.00	0.00	0.00
2,200.00	0.00	0.00	2,200.00	0.00	0.00	0.00	0.00	0.00	0.00
2,300.00	0.00	0.00	2,300.00	0.00	0.00	0.00	0.00	0.00	0.00
2,400.00	0.00	0.00	2,400.00	0.00	0.00	0.00	0.00	0.00	0.00
2,500.00	0.00	0.00	2,500.00	0.00	0.00	0.00	0.00	0.00	0.00
2,600.00	0.00	0.00	2,600.00	0.00	0.00	0.00	0.00	0.00	0.00
2,700.00	0.00	0.00	2,700.00	0.00	0.00	0.00	0.00	0.00	0.00
2,800.00	0.00	0.00	2,800.00	0.00	0.00	0.00	0.00	0.00	0.00
2,900.00	0.00	0.00	2,900.00	0.00	0.00	0.00	0.00	0.00	0.00
3,000.00	0.00	0.00	3,000.00	0.00	0.00	0.00	0.00	0.00	0.00
KOP Begin 1°/100' build									
3,100.00	1.00	153.90	3,099.99	-0.78	0.38	0.42	1.00	1.00	0.00
3,200.00	2.00	153.90	3,199.96	-3.13	1.54	1.67	1.00	1.00	0.00
3,300.00	3.00	153.90	3,299.86	-7.05	3.45	3.76	1.00	1.00	0.00
3,400.00	4.00	153.90	3,399.68	-12.53	6.14	6.68	1.00	1.00	0.00
3,500.00	5.00	153.90	3,499.37	-19.58	9.59	10.43	1.00	1.00	0.00
3,600.00	6.00	153.90	3,598.90	-28.19	13.81	15.02	1.00	1.00	0.00
3,700.00	7.00	153.90	3,698.26	-38.35	18.79	20.44	1.00	1.00	0.00
3,800.00	8.00	153.90	3,797.40	-50.07	24.53	26.69	1.00	1.00	0.00
3,900.00	9.00	153.90	3,896.30	-63.35	31.03	33.76	1.00	1.00	0.00
3,912.85	9.13	153.90	3,908.99	-65.17	31.92	34.73	1.00	1.00	0.00
Begin 9.13° tangent									
4,000.00	9.13	153.90	3,995.04	-77.58	38.00	41.35	0.00	0.00	0.00
4,100.00	9.13	153.90	4,093.77	-91.83	44.98	48.94	0.00	0.00	0.00
4,200.00	9.13	153.90	4,192.51	-106.08	51.96	56.53	0.00	0.00	0.00
4,300.00	9.13	153.90	4,291.24	-120.32	58.94	64.12	0.00	0.00	0.00
4,400.00	9.13	153.90	4,389.97	-134.57	65.92	71.72	0.00	0.00	0.00
4,500.00	9.13	153.90	4,488.71	-148.82	72.90	79.31	0.00	0.00	0.00
4,600.00	9.13	153.90	4,587.44	-163.07	79.88	86.90	0.00	0.00	0.00
4,700.00	9.13	153.90	4,686.17	-177.31	86.86	94.50	0.00	0.00	0.00
4,800.00	9.13	153.90	4,784.91	-191.56	93.84	102.09	0.00	0.00	0.00
4,900.00	9.13	153.90	4,883.64	-205.81	100.82	109.68	0.00	0.00	0.00

Database:	DB_Jul2216dt_v14	Local Co-ordinate Reference:	Well Almont 5-05-03L
Company:	Confluence Resources	TVD Reference:	RKB=5001+24 @ 5025.00ft
Project:	Weld County, Colorado	MD Reference:	RKB=5001+24 @ 5025.00ft
Site:	Section 06-T07N-R64W	North Reference:	True
Well:	Almont 5-05-03L	Survey Calculation Method:	Minimum Curvature
Wellbore:	Original Hole		
Design:	plan1		

Planned Survey									
Measured Depth (ft)	Inclination (°)	Azimuth (°)	Vertical Depth (ft)	+N/-S (ft)	+E/-W (ft)	Vertical Section (ft)	Dogleg Rate (°/100ft)	Build Rate (°/100ft)	Turn Rate (°/100ft)
5,000.00	9.13	153.90	4,982.37	-220.06	107.80	117.27	0.00	0.00	0.00
5,100.00	9.13	153.90	5,081.11	-234.30	114.77	124.87	0.00	0.00	0.00
5,200.00	9.13	153.90	5,179.84	-248.55	121.75	132.46	0.00	0.00	0.00
5,300.00	9.13	153.90	5,278.57	-262.80	128.73	140.05	0.00	0.00	0.00
5,400.00	9.13	153.90	5,377.31	-277.05	135.71	147.65	0.00	0.00	0.00
5,500.00	9.13	153.90	5,476.04	-291.29	142.69	155.24	0.00	0.00	0.00
5,600.00	9.13	153.90	5,574.78	-305.54	149.67	162.83	0.00	0.00	0.00
5,700.00	9.13	153.90	5,673.51	-319.79	156.65	170.42	0.00	0.00	0.00
5,800.00	9.13	153.90	5,772.24	-334.03	163.63	178.02	0.00	0.00	0.00
5,900.00	9.13	153.90	5,870.98	-348.28	170.61	185.61	0.00	0.00	0.00
6,000.00	9.13	153.90	5,969.71	-362.53	177.59	193.20	0.00	0.00	0.00
6,100.00	9.13	153.90	6,068.44	-376.78	184.57	200.79	0.00	0.00	0.00
6,200.00	9.13	153.90	6,167.18	-391.02	191.55	208.39	0.00	0.00	0.00
6,300.00	9.13	153.90	6,265.91	-405.27	198.52	215.98	0.00	0.00	0.00
6,400.00	9.13	153.90	6,364.64	-419.52	205.50	223.57	0.00	0.00	0.00
6,500.00	9.13	153.90	6,463.38	-433.77	212.48	231.17	0.00	0.00	0.00
6,600.00	9.13	153.90	6,562.11	-448.01	219.46	238.76	0.00	0.00	0.00
6,700.00	9.13	153.90	6,660.84	-462.26	226.44	246.35	0.00	0.00	0.00
6,722.29	9.13	153.90	6,682.85	-465.44	228.00	248.04	0.00	0.00	0.00
Begin 10°/100' build/turn									
6,800.00	14.28	124.21	6,758.99	-476.38	238.65	259.17	10.00	6.63	-38.21
6,900.00	23.15	109.33	6,853.66	-489.85	267.47	288.55	10.00	8.86	-14.88
7,000.00	32.65	102.58	6,941.95	-502.26	312.46	334.03	10.00	9.50	-6.74
7,100.00	42.36	98.66	7,021.20	-513.24	372.25	394.24	10.00	9.71	-3.93
7,200.00	52.17	95.98	7,088.98	-522.45	445.02	467.34	10.00	9.81	-2.68
7,300.00	62.02	93.93	7,143.24	-529.60	528.56	551.11	10.00	9.85	-2.05
7,400.00	71.90	92.23	7,182.33	-534.49	620.33	643.01	10.00	9.88	-1.70
7,500.00	81.79	90.71	7,205.07	-536.96	717.55	740.25	10.00	9.89	-1.52
7,582.97	90.00	89.51	7,211.00	-537.12	800.23	822.86	10.00	9.90	-1.44
Begin 90.00° lateral									
7,600.00	90.00	89.51	7,211.00	-536.97	817.27	839.87	0.00	0.00	0.00
7,700.00	90.00	89.51	7,211.00	-536.13	917.26	939.74	0.00	0.00	0.00
7,800.00	90.00	89.51	7,211.00	-535.28	1,017.26	1,039.60	0.00	0.00	0.00
7,900.00	90.00	89.51	7,211.00	-534.43	1,117.26	1,139.46	0.00	0.00	0.00
8,000.00	90.00	89.51	7,211.00	-533.59	1,217.25	1,239.33	0.00	0.00	0.00
8,100.00	90.00	89.51	7,211.00	-532.74	1,317.25	1,339.19	0.00	0.00	0.00
8,200.00	90.00	89.51	7,211.00	-531.89	1,417.25	1,439.06	0.00	0.00	0.00
8,300.00	90.00	89.51	7,211.00	-531.05	1,517.24	1,538.92	0.00	0.00	0.00
8,400.00	90.00	89.51	7,211.00	-530.20	1,617.24	1,638.79	0.00	0.00	0.00
8,500.00	90.00	89.51	7,211.00	-529.35	1,717.24	1,738.65	0.00	0.00	0.00
8,600.00	90.00	89.51	7,211.00	-528.50	1,817.23	1,838.52	0.00	0.00	0.00
8,700.00	90.00	89.51	7,211.00	-527.66	1,917.23	1,938.38	0.00	0.00	0.00
8,800.00	90.00	89.51	7,211.00	-526.81	2,017.22	2,038.25	0.00	0.00	0.00
8,900.00	90.00	89.51	7,211.00	-525.96	2,117.22	2,138.11	0.00	0.00	0.00
9,000.00	90.00	89.51	7,211.00	-525.12	2,217.22	2,237.98	0.00	0.00	0.00
9,100.00	90.00	89.51	7,211.00	-524.27	2,317.21	2,337.84	0.00	0.00	0.00
9,200.00	90.00	89.51	7,211.00	-523.42	2,417.21	2,437.71	0.00	0.00	0.00
9,300.00	90.00	89.51	7,211.00	-522.58	2,517.21	2,537.57	0.00	0.00	0.00
9,400.00	90.00	89.51	7,211.00	-521.73	2,617.20	2,637.44	0.00	0.00	0.00
9,500.00	90.00	89.51	7,211.00	-520.88	2,717.20	2,737.30	0.00	0.00	0.00
9,600.00	90.00	89.51	7,211.00	-520.03	2,817.20	2,837.17	0.00	0.00	0.00
9,700.00	90.00	89.51	7,211.00	-519.19	2,917.19	2,937.03	0.00	0.00	0.00
9,800.00	90.00	89.51	7,211.00	-518.34	3,017.19	3,036.89	0.00	0.00	0.00
9,900.00	90.00	89.51	7,211.00	-517.49	3,117.18	3,136.76	0.00	0.00	0.00

Database:	DB_Jul2216dt_v14	Local Co-ordinate Reference:	Well Almont 5-05-03L
Company:	Confluence Resources	TVD Reference:	RKB=5001+24 @ 5025.00ft
Project:	Weld County, Colorado	MD Reference:	RKB=5001+24 @ 5025.00ft
Site:	Section 06-T07N-R64W	North Reference:	True
Well:	Almont 5-05-03L	Survey Calculation Method:	Minimum Curvature
Wellbore:	Original Hole		
Design:	plan1		

Planned Survey									
Measured Depth (ft)	Inclination (°)	Azimuth (°)	Vertical Depth (ft)	+N/-S (ft)	+E/-W (ft)	Vertical Section (ft)	Dogleg Rate (°/100ft)	Build Rate (°/100ft)	Turn Rate (°/100ft)
10,000.00	90.00	89.51	7,211.00	-516.65	3,217.18	3,236.62	0.00	0.00	0.00
10,100.00	90.00	89.51	7,211.00	-515.80	3,317.18	3,336.49	0.00	0.00	0.00
10,200.00	90.00	89.51	7,211.00	-514.95	3,417.17	3,436.35	0.00	0.00	0.00
10,300.00	90.00	89.51	7,211.00	-514.11	3,517.17	3,536.22	0.00	0.00	0.00
10,400.00	90.00	89.51	7,211.00	-513.26	3,617.17	3,636.08	0.00	0.00	0.00
10,500.00	90.00	89.51	7,211.00	-512.41	3,717.16	3,735.95	0.00	0.00	0.00
10,600.00	90.00	89.51	7,211.00	-511.57	3,817.16	3,835.81	0.00	0.00	0.00
10,700.00	90.00	89.51	7,211.00	-510.72	3,917.16	3,935.68	0.00	0.00	0.00
10,800.00	90.00	89.51	7,211.00	-509.87	4,017.15	4,035.54	0.00	0.00	0.00
10,900.00	90.00	89.51	7,211.00	-509.02	4,117.15	4,135.41	0.00	0.00	0.00
11,000.00	90.00	89.51	7,211.00	-508.18	4,217.15	4,235.27	0.00	0.00	0.00
11,100.00	90.00	89.51	7,211.00	-507.33	4,317.14	4,335.14	0.00	0.00	0.00
11,200.00	90.00	89.51	7,211.00	-506.48	4,417.14	4,435.00	0.00	0.00	0.00
11,300.00	90.00	89.51	7,211.00	-505.64	4,517.13	4,534.87	0.00	0.00	0.00
11,400.00	90.00	89.51	7,211.00	-504.79	4,617.13	4,634.73	0.00	0.00	0.00
11,500.00	90.00	89.51	7,211.00	-503.94	4,717.13	4,734.60	0.00	0.00	0.00
11,600.00	90.00	89.51	7,211.00	-503.10	4,817.12	4,834.46	0.00	0.00	0.00
11,700.00	90.00	89.51	7,211.00	-502.25	4,917.12	4,934.32	0.00	0.00	0.00
11,800.00	90.00	89.51	7,211.00	-501.40	5,017.12	5,034.19	0.00	0.00	0.00
11,900.00	90.00	89.51	7,211.00	-500.56	5,117.11	5,134.05	0.00	0.00	0.00
12,000.00	90.00	89.51	7,211.00	-499.71	5,217.11	5,233.92	0.00	0.00	0.00
12,100.00	90.00	89.51	7,211.00	-498.86	5,317.11	5,333.78	0.00	0.00	0.00
12,200.00	90.00	89.51	7,211.00	-498.01	5,417.10	5,433.65	0.00	0.00	0.00
12,300.00	90.00	89.51	7,211.00	-497.17	5,517.10	5,533.51	0.00	0.00	0.00
12,400.00	90.00	89.51	7,211.00	-496.32	5,617.10	5,633.38	0.00	0.00	0.00
12,500.00	90.00	89.51	7,211.00	-495.47	5,717.09	5,733.24	0.00	0.00	0.00
12,600.00	90.00	89.51	7,211.00	-494.63	5,817.09	5,833.11	0.00	0.00	0.00
12,700.00	90.00	89.51	7,211.00	-493.78	5,917.08	5,932.97	0.00	0.00	0.00
12,800.00	90.00	89.51	7,211.00	-492.93	6,017.08	6,032.84	0.00	0.00	0.00
12,900.00	90.00	89.51	7,211.00	-492.09	6,117.08	6,132.70	0.00	0.00	0.00
13,000.00	90.00	89.51	7,211.00	-491.24	6,217.07	6,232.57	0.00	0.00	0.00
13,100.00	90.00	89.51	7,211.00	-490.39	6,317.07	6,332.43	0.00	0.00	0.00
13,200.00	90.00	89.51	7,211.00	-489.55	6,417.07	6,432.30	0.00	0.00	0.00
13,300.00	90.00	89.51	7,211.00	-488.70	6,517.06	6,532.16	0.00	0.00	0.00
13,400.00	90.00	89.51	7,211.00	-487.85	6,617.06	6,632.02	0.00	0.00	0.00
13,500.00	90.00	89.51	7,211.00	-487.00	6,717.06	6,731.89	0.00	0.00	0.00
13,600.00	90.00	89.51	7,211.00	-486.16	6,817.05	6,831.75	0.00	0.00	0.00
13,700.00	90.00	89.51	7,211.00	-485.31	6,917.05	6,931.62	0.00	0.00	0.00
13,800.00	90.00	89.51	7,211.00	-484.46	7,017.05	7,031.48	0.00	0.00	0.00
13,900.00	90.00	89.51	7,211.00	-483.62	7,117.04	7,131.35	0.00	0.00	0.00
14,000.00	90.00	89.51	7,211.00	-482.77	7,217.04	7,231.21	0.00	0.00	0.00
14,100.00	90.00	89.51	7,211.00	-481.92	7,317.03	7,331.08	0.00	0.00	0.00
14,200.00	90.00	89.51	7,211.00	-481.08	7,417.03	7,430.94	0.00	0.00	0.00
14,300.00	90.00	89.51	7,211.00	-480.23	7,517.03	7,530.81	0.00	0.00	0.00
14,400.00	90.00	89.51	7,211.00	-479.38	7,617.02	7,630.67	0.00	0.00	0.00
14,500.00	90.00	89.51	7,211.00	-478.54	7,717.02	7,730.54	0.00	0.00	0.00
14,600.00	90.00	89.51	7,211.00	-477.69	7,817.02	7,830.40	0.00	0.00	0.00
14,700.00	90.00	89.51	7,211.00	-476.84	7,917.01	7,930.27	0.00	0.00	0.00
14,800.00	90.00	89.51	7,211.00	-475.99	8,017.01	8,030.13	0.00	0.00	0.00
14,900.00	90.00	89.51	7,211.00	-475.15	8,117.01	8,130.00	0.00	0.00	0.00
15,000.00	90.00	89.51	7,211.00	-474.30	8,217.00	8,229.86	0.00	0.00	0.00
15,100.00	90.00	89.51	7,211.00	-473.45	8,317.00	8,329.73	0.00	0.00	0.00
15,200.00	90.00	89.51	7,211.00	-472.61	8,416.99	8,429.59	0.00	0.00	0.00
15,300.00	90.00	89.51	7,211.00	-471.76	8,516.99	8,529.45	0.00	0.00	0.00

Database:	DB_Jul2216dt_v14	Local Co-ordinate Reference:	Well Almont 5-05-03L
Company:	Confluence Resources	TVD Reference:	RKB=5001+24 @ 5025.00ft
Project:	Weld County, Colorado	MD Reference:	RKB=5001+24 @ 5025.00ft
Site:	Section 06-T07N-R64W	North Reference:	True
Well:	Almont 5-05-03L	Survey Calculation Method:	Minimum Curvature
Wellbore:	Original Hole		
Design:	plan1		

Planned Survey										
Measured Depth (ft)	Inclination (°)	Azimuth (°)	Vertical Depth (ft)	+N/-S (ft)	+E/-W (ft)	Vertical Section (ft)	Dogleg Rate (°/100ft)	Build Rate (°/100ft)	Turn Rate (°/100ft)	
15,400.00	90.00	89.51	7,211.00	-470.91	8,616.99	8,629.32	0.00	0.00	0.00	
15,500.00	90.00	89.51	7,211.00	-470.07	8,716.98	8,729.18	0.00	0.00	0.00	
15,600.00	90.00	89.51	7,211.00	-469.22	8,816.98	8,829.05	0.00	0.00	0.00	
15,700.00	90.00	89.51	7,211.00	-468.37	8,916.98	8,928.91	0.00	0.00	0.00	
15,800.00	90.00	89.51	7,211.00	-467.53	9,016.97	9,028.78	0.00	0.00	0.00	
15,900.00	90.00	89.51	7,211.00	-466.68	9,116.97	9,128.64	0.00	0.00	0.00	
16,000.00	90.00	89.51	7,211.00	-465.83	9,216.97	9,228.51	0.00	0.00	0.00	
16,100.00	90.00	89.51	7,211.00	-464.98	9,316.96	9,328.37	0.00	0.00	0.00	
16,200.00	90.00	89.51	7,211.00	-464.14	9,416.96	9,428.24	0.00	0.00	0.00	
16,300.00	90.00	89.51	7,211.00	-463.29	9,516.96	9,528.10	0.00	0.00	0.00	
16,400.00	90.00	89.51	7,211.00	-462.44	9,616.95	9,627.97	0.00	0.00	0.00	
16,500.00	90.00	89.51	7,211.00	-461.60	9,716.95	9,727.83	0.00	0.00	0.00	
16,600.00	90.00	89.51	7,211.00	-460.75	9,816.94	9,827.70	0.00	0.00	0.00	
16,700.00	90.00	89.51	7,211.00	-459.90	9,916.94	9,927.56	0.00	0.00	0.00	
16,800.00	90.00	89.51	7,211.00	-459.06	10,016.94	10,027.43	0.00	0.00	0.00	
16,900.00	90.00	89.51	7,211.00	-458.21	10,116.93	10,127.29	0.00	0.00	0.00	
17,000.00	90.00	89.51	7,211.00	-457.36	10,216.93	10,227.16	0.00	0.00	0.00	
17,100.00	90.00	89.51	7,211.00	-456.51	10,316.93	10,327.02	0.00	0.00	0.00	
17,200.00	90.00	89.51	7,211.00	-455.67	10,416.92	10,426.88	0.00	0.00	0.00	
17,232.95	90.00	89.51	7,211.00	-455.39	10,449.88	10,459.79	0.00	0.00	0.00	
PBHL/TD 17232.95 MD/7211.00 TVD										

Design Targets										
Target Name	Dip Angle (°)	Dip Dir. (°)	TVD (ft)	+N/-S (ft)	+E/-W (ft)	Northing (usft)	Easting (usft)	Latitude	Longitude	
- hit/miss target										
- Shape										
Almont 5-05-03L PBHL 1	0.00	0.00	7,211.00	-455.39	10,449.88	14,747,119.72	1,766,307.63	40.60430103	-104.54644854	
- plan hits target center										
- Point										
Almont 5-05-03L LP 184	0.00	0.00	7,211.00	-537.12	800.23	14,746,992.40	1,756,658.50	40.60408271	-104.58121304	
- plan hits target center										
- Point										

Plan Annotations					
Measured Depth (ft)	Vertical Depth (ft)	Local Coordinates			
		+N/-S (ft)	+E/-W (ft)	Comment	
3,000.00	3,000.00	0.00	0.00	KOP Begin 1°/100' build	
3,912.85	3,908.99	-65.17	31.92	Begin 9.13° tangent	
6,722.29	6,682.85	-465.44	228.00	Begin 10°/100' build/turn	
7,582.97	7,211.00	-537.12	800.23	Begin 90.00° lateral	
17,232.95	7,211.00	-455.39	10,449.88	PBHL/TD 17232.95 MD/7211.00 TVD	

Database:	DB_Jul2216dt_v14	Local Co-ordinate Reference:	Well Almont 5-05-03L
Company:	Confluence Resources	TVD Reference:	RKB=5001+24 @ 5025.00ft
Project:	Weld County, Colorado	MD Reference:	RKB=5001+24 @ 5025.00ft
Site:	Section 06-T07N-R64W	North Reference:	True
Well:	Almont 5-05-03L	Survey Calculation Method:	Minimum Curvature
Wellbore:	Original Hole		
Design:	plan1		

Project	Weld County, Colorado		
Map System:	Universal Transverse Mercator (US Survey Feet)	System Datum:	Mean Sea Level
Geo Datum:	NAD83 Colorado - HARN		
Map Zone:	Zone 13N (108 W to 102 W)		

Site		Section 06-T07N-R64W			
Site Position:		Northing:	14,746,184.54 usft	Latitude:	40.60187654
From:	Map	Easting:	1,755,730.03 usft	Longitude:	-104.58457171
Position Uncertainty:	0.00 ft	Slot Radius:	13-3/16 "	Grid Convergence:	0.27 °

Well	Almont 5-05-03L, Surf loc: 1297 FNL 325 FEL Section 06-T08N-R64W					
Well Position	+N/-S	0.00 ft	Northing:	14,747,525.73 usft	Latitude:	40.60555759
	+E/-W	0.00 ft	Easting:	1,755,855.74 usft	Longitude:	-104.58409601
Position Uncertainty		0.00 ft	Wellhead Elevation:		Ground Level:	5,001.00 ft

Wellbore	Original Hole				
Magnetics	Model Name	Sample Date	Declination (°)	Dip Angle (°)	Field Strength (nT)
	HDGM	2/22/2018	8.00	66.98	52,363.10000000

Design	plan1			
Audit Notes:				
Version:	Phase:	PLAN	Tie On Depth:	0.00
Vertical Section:	Depth From (TVD) (ft)	+N/-S (ft)	+E/-W (ft)	Direction (°)
	0.00	0.00	0.00	92.50

Plan Survey Tool Program	Date	2/22/2018		
Depth From (ft)	Depth To (ft)	Survey (Wellbore)	Tool Name	Remarks
1	0.00	17,232.95 plan1 (Original Hole)		

Plan Sections										
Measured Depth (ft)	Inclination (°)	Azimuth (°)	Vertical Depth (ft)	+N/-S (ft)	+E/-W (ft)	Dogleg Rate (°/100ft)	Build Rate (°/100ft)	Turn Rate (°/100ft)	TFO (°)	Target
0.00	0.00	0.00	0.00	0.00	0.00	0.00	0.00	0.00	0.00	
3,000.00	0.00	0.00	3,000.00	0.00	0.00	0.00	0.00	0.00	0.00	
3,912.85	9.13	153.90	3,908.99	-65.17	31.92	1.00	1.00	0.00	153.90	
6,722.29	9.13	153.90	6,682.85	-465.44	228.00	0.00	0.00	0.00	0.00	
7,582.97	90.00	89.51	7,211.00	-537.12	800.23	10.00	9.40	-7.48	-64.67	Almont 5-05-03L LP 1
17,232.95	90.00	89.51	7,211.00	-455.39	10,449.88	0.00	0.00	0.00	0.00	Almont 5-05-03L PBH

Database:	DB_Jul2216dt_v14	Local Co-ordinate Reference:	Well Almont 5-05-03L
Company:	Confluence Resources	TVD Reference:	RKB=5001+24 @ 5025.00ft
Project:	Weld County, Colorado	MD Reference:	RKB=5001+24 @ 5025.00ft
Site:	Section 06-T07N-R64W	North Reference:	True
Well:	Almont 5-05-03L	Survey Calculation Method:	Minimum Curvature
Wellbore:	Original Hole		
Design:	plan1		

Planned Survey									
Measured Depth (ft)	Inclination (°)	Azimuth (°)	Vertical Depth (ft)	+N/-S (ft)	+E/-W (ft)	Map Northing (usft)	Map Easting (usft)	Latitude	Longitude
0.00	0.00	0.00	0.00	0.00	0.00	14,747,525.73	1,755,855.74	40.60555759	-104.58409601
100.00	0.00	0.00	100.00	0.00	0.00	14,747,525.73	1,755,855.74	40.60555759	-104.58409601
200.00	0.00	0.00	200.00	0.00	0.00	14,747,525.73	1,755,855.74	40.60555759	-104.58409601
300.00	0.00	0.00	300.00	0.00	0.00	14,747,525.73	1,755,855.74	40.60555759	-104.58409601
400.00	0.00	0.00	400.00	0.00	0.00	14,747,525.73	1,755,855.74	40.60555759	-104.58409601
500.00	0.00	0.00	500.00	0.00	0.00	14,747,525.73	1,755,855.74	40.60555759	-104.58409601
600.00	0.00	0.00	600.00	0.00	0.00	14,747,525.73	1,755,855.74	40.60555759	-104.58409601
700.00	0.00	0.00	700.00	0.00	0.00	14,747,525.73	1,755,855.74	40.60555759	-104.58409601
800.00	0.00	0.00	800.00	0.00	0.00	14,747,525.73	1,755,855.74	40.60555759	-104.58409601
900.00	0.00	0.00	900.00	0.00	0.00	14,747,525.73	1,755,855.74	40.60555759	-104.58409601
1,000.00	0.00	0.00	1,000.00	0.00	0.00	14,747,525.73	1,755,855.74	40.60555759	-104.58409601
1,100.00	0.00	0.00	1,100.00	0.00	0.00	14,747,525.73	1,755,855.74	40.60555759	-104.58409601
1,200.00	0.00	0.00	1,200.00	0.00	0.00	14,747,525.73	1,755,855.74	40.60555759	-104.58409601
1,300.00	0.00	0.00	1,300.00	0.00	0.00	14,747,525.73	1,755,855.74	40.60555759	-104.58409601
1,400.00	0.00	0.00	1,400.00	0.00	0.00	14,747,525.73	1,755,855.74	40.60555759	-104.58409601
1,500.00	0.00	0.00	1,500.00	0.00	0.00	14,747,525.73	1,755,855.74	40.60555759	-104.58409601
1,600.00	0.00	0.00	1,600.00	0.00	0.00	14,747,525.73	1,755,855.74	40.60555759	-104.58409601
1,700.00	0.00	0.00	1,700.00	0.00	0.00	14,747,525.73	1,755,855.74	40.60555759	-104.58409601
1,800.00	0.00	0.00	1,800.00	0.00	0.00	14,747,525.73	1,755,855.74	40.60555759	-104.58409601
1,900.00	0.00	0.00	1,900.00	0.00	0.00	14,747,525.73	1,755,855.74	40.60555759	-104.58409601
2,000.00	0.00	0.00	2,000.00	0.00	0.00	14,747,525.73	1,755,855.74	40.60555759	-104.58409601
2,100.00	0.00	0.00	2,100.00	0.00	0.00	14,747,525.73	1,755,855.74	40.60555759	-104.58409601
2,200.00	0.00	0.00	2,200.00	0.00	0.00	14,747,525.73	1,755,855.74	40.60555759	-104.58409601
2,300.00	0.00	0.00	2,300.00	0.00	0.00	14,747,525.73	1,755,855.74	40.60555759	-104.58409601
2,400.00	0.00	0.00	2,400.00	0.00	0.00	14,747,525.73	1,755,855.74	40.60555759	-104.58409601
2,500.00	0.00	0.00	2,500.00	0.00	0.00	14,747,525.73	1,755,855.74	40.60555759	-104.58409601
2,600.00	0.00	0.00	2,600.00	0.00	0.00	14,747,525.73	1,755,855.74	40.60555759	-104.58409601
2,700.00	0.00	0.00	2,700.00	0.00	0.00	14,747,525.73	1,755,855.74	40.60555759	-104.58409601
2,800.00	0.00	0.00	2,800.00	0.00	0.00	14,747,525.73	1,755,855.74	40.60555759	-104.58409601
2,900.00	0.00	0.00	2,900.00	0.00	0.00	14,747,525.73	1,755,855.74	40.60555759	-104.58409601
3,000.00	0.00	0.00	3,000.00	0.00	0.00	14,747,525.73	1,755,855.74	40.60555759	-104.58409601
KOP Begin 1°/100' build									
3,100.00	1.00	153.90	3,099.99	-0.78	0.38	14,747,524.95	1,755,856.13	40.60555544	-104.58409463
3,200.00	2.00	153.90	3,199.96	-3.13	1.54	14,747,522.60	1,755,857.29	40.60554898	-104.58409048
3,300.00	3.00	153.90	3,299.86	-7.05	3.45	14,747,518.69	1,755,859.23	40.60553823	-104.58408356
3,400.00	4.00	153.90	3,399.68	-12.53	6.14	14,747,513.22	1,755,861.94	40.60552318	-104.58407389
3,500.00	5.00	153.90	3,499.37	-19.58	9.59	14,747,506.20	1,755,865.42	40.60550383	-104.58406145
3,600.00	6.00	153.90	3,598.90	-28.19	13.81	14,747,497.61	1,755,869.68	40.60548019	-104.58404626
3,700.00	7.00	153.90	3,698.26	-38.35	18.79	14,747,487.47	1,755,874.71	40.60545228	-104.58402832
3,800.00	8.00	153.90	3,797.40	-50.07	24.53	14,747,475.77	1,755,880.50	40.60542009	-104.58400764
3,900.00	9.00	153.90	3,896.30	-63.35	31.03	14,747,462.53	1,755,887.07	40.60538365	-104.58398421
3,912.85	9.13	153.90	3,908.99	-65.17	31.92	14,747,460.72	1,755,887.97	40.60537866	-104.58398100
Begin 9.13° tangent									
4,000.00	9.13	153.90	3,995.04	-77.58	38.00	14,747,448.33	1,755,894.11	40.60534456	-104.58395909
4,100.00	9.13	153.90	4,093.77	-91.83	44.98	14,747,434.11	1,755,901.16	40.60530544	-104.58393395
4,200.00	9.13	153.90	4,192.51	-106.08	51.96	14,747,419.90	1,755,908.20	40.60526632	-104.58390880
4,300.00	9.13	153.90	4,291.24	-120.32	58.94	14,747,405.68	1,755,915.25	40.60522720	-104.58388366
4,400.00	9.13	153.90	4,389.97	-134.57	65.92	14,747,391.47	1,755,922.30	40.60518808	-104.58385851
4,500.00	9.13	153.90	4,488.71	-148.82	72.90	14,747,377.26	1,755,929.34	40.60514895	-104.58383337
4,600.00	9.13	153.90	4,587.44	-163.07	79.88	14,747,363.04	1,755,936.39	40.60510983	-104.58380823
4,700.00	9.13	153.90	4,686.17	-177.31	86.86	14,747,348.83	1,755,943.43	40.60507071	-104.58378308
4,800.00	9.13	153.90	4,784.91	-191.56	93.84	14,747,334.61	1,755,950.48	40.60503159	-104.58375794
4,900.00	9.13	153.90	4,883.64	-205.81	100.82	14,747,320.40	1,755,957.53	40.60499247	-104.58373280
5,000.00	9.13	153.90	4,982.37	-220.06	107.80	14,747,306.19	1,755,964.57	40.60495335	-104.58370765

Database:	DB_Jul2216dt_v14	Local Co-ordinate Reference:	Well Almont 5-05-03L
Company:	Confluence Resources	TVD Reference:	RKB=5001+24 @ 5025.00ft
Project:	Weld County, Colorado	MD Reference:	RKB=5001+24 @ 5025.00ft
Site:	Section 06-T07N-R64W	North Reference:	True
Well:	Almont 5-05-03L	Survey Calculation Method:	Minimum Curvature
Wellbore:	Original Hole		
Design:	plan1		

Planned Survey									
Measured Depth (ft)	Inclination (°)	Azimuth (°)	Vertical Depth (ft)	+N/-S (ft)	+E/-W (ft)	Map Northing (usft)	Map Easting (usft)	Latitude	Longitude
5,100.00	9.13	153.90	5,081.11	-234.30	114.77	14,747,291.97	1,755,971.62	40.60491423	-104.58368251
5,200.00	9.13	153.90	5,179.84	-248.55	121.75	14,747,277.76	1,755,978.67	40.60487511	-104.58365737
5,300.00	9.13	153.90	5,278.57	-262.80	128.73	14,747,263.54	1,755,985.71	40.60483598	-104.58363222
5,400.00	9.13	153.90	5,377.31	-277.05	135.71	14,747,249.33	1,755,992.76	40.60479686	-104.58360708
5,500.00	9.13	153.90	5,476.04	-291.29	142.69	14,747,235.11	1,755,999.80	40.60475774	-104.58358193
5,600.00	9.13	153.90	5,574.78	-305.54	149.67	14,747,220.90	1,756,006.85	40.60471862	-104.58355679
5,700.00	9.13	153.90	5,673.51	-319.79	156.65	14,747,206.69	1,756,013.90	40.60467950	-104.58353165
5,800.00	9.13	153.90	5,772.24	-334.03	163.63	14,747,192.47	1,756,020.94	40.60464038	-104.58350650
5,900.00	9.13	153.90	5,870.98	-348.28	170.61	14,747,178.26	1,756,027.99	40.60460126	-104.58348136
6,000.00	9.13	153.90	5,969.71	-362.53	177.59	14,747,164.04	1,756,035.04	40.60456214	-104.58345622
6,100.00	9.13	153.90	6,068.44	-376.78	184.57	14,747,149.83	1,756,042.08	40.60452301	-104.58343108
6,200.00	9.13	153.90	6,167.18	-391.02	191.55	14,747,135.62	1,756,049.13	40.60448389	-104.58340593
6,300.00	9.13	153.90	6,265.91	-405.27	198.52	14,747,121.40	1,756,056.18	40.60444477	-104.58338079
6,400.00	9.13	153.90	6,364.64	-419.52	205.50	14,747,107.19	1,756,063.22	40.60440565	-104.58335565
6,500.00	9.13	153.90	6,463.38	-433.77	212.48	14,747,092.97	1,756,070.27	40.60436653	-104.58333050
6,600.00	9.13	153.90	6,562.11	-448.01	219.46	14,747,078.76	1,756,077.31	40.60432741	-104.58330536
6,700.00	9.13	153.90	6,660.84	-462.26	226.44	14,747,064.55	1,756,084.36	40.60428829	-104.58328022
6,722.29	9.13	153.90	6,682.85	-465.44	228.00	14,747,061.38	1,756,085.93	40.60427957	-104.58327461
Begin 10°/100' build/turn									
6,800.00	14.28	124.21	6,758.99	-476.38	238.65	14,747,050.49	1,756,096.64	40.60424952	-104.58323622
6,900.00	23.15	109.33	6,853.66	-489.85	267.47	14,747,037.15	1,756,125.52	40.60421253	-104.58313239
7,000.00	32.65	102.58	6,941.95	-502.26	312.46	14,747,024.95	1,756,170.57	40.60417844	-104.58297032
7,100.00	42.36	98.66	7,021.20	-513.24	372.25	14,747,014.25	1,756,230.41	40.60414830	-104.58275493
7,200.00	52.17	95.98	7,088.98	-522.45	445.02	14,747,005.39	1,756,303.22	40.60412302	-104.58249276
7,300.00	62.02	93.93	7,143.24	-529.60	528.56	14,746,998.63	1,756,386.79	40.60410337	-104.58219179
7,400.00	71.90	92.23	7,182.33	-534.49	620.33	14,746,994.18	1,756,478.59	40.60408994	-104.58186116
7,500.00	81.79	90.71	7,205.07	-536.96	717.55	14,746,992.17	1,756,575.82	40.60408315	-104.58151091
7,582.97	90.00	89.51	7,211.00	-537.12	800.23	14,746,992.40	1,756,658.50	40.60408271	-104.58121304
Begin 90.00° lateral									
7,600.00	90.00	89.51	7,211.00	-536.97	817.27	14,746,992.62	1,756,675.53	40.60408310	-104.58115167
7,700.00	90.00	89.51	7,211.00	-536.13	917.26	14,746,993.94	1,756,775.52	40.60408542	-104.58079142
7,800.00	90.00	89.51	7,211.00	-535.28	1,017.26	14,746,995.26	1,756,875.52	40.60408773	-104.58043116
7,900.00	90.00	89.51	7,211.00	-534.43	1,117.26	14,746,996.58	1,756,975.51	40.60409005	-104.58007091
8,000.00	90.00	89.51	7,211.00	-533.59	1,217.25	14,746,997.90	1,757,075.50	40.60409236	-104.57971065
8,100.00	90.00	89.51	7,211.00	-532.74	1,317.25	14,746,999.22	1,757,175.49	40.60409467	-104.57935040
8,200.00	90.00	89.51	7,211.00	-531.89	1,417.25	14,747,000.54	1,757,275.48	40.60409698	-104.57899015
8,300.00	90.00	89.51	7,211.00	-531.05	1,517.24	14,747,001.86	1,757,375.47	40.60409929	-104.57862989
8,400.00	90.00	89.51	7,211.00	-530.20	1,617.24	14,747,003.18	1,757,475.46	40.60410160	-104.57826964
8,500.00	90.00	89.51	7,211.00	-529.35	1,717.24	14,747,004.50	1,757,575.45	40.60410390	-104.57790939
8,600.00	90.00	89.51	7,211.00	-528.50	1,817.23	14,747,005.82	1,757,675.44	40.60410621	-104.57754913
8,700.00	90.00	89.51	7,211.00	-527.66	1,917.23	14,747,007.14	1,757,775.43	40.60410852	-104.57718888
8,800.00	90.00	89.51	7,211.00	-526.81	2,017.22	14,747,008.46	1,757,875.43	40.60411082	-104.57682863
8,900.00	90.00	89.51	7,211.00	-525.96	2,117.22	14,747,009.78	1,757,975.42	40.60411312	-104.57646837
9,000.00	90.00	89.51	7,211.00	-525.12	2,217.22	14,747,011.10	1,758,075.41	40.60411542	-104.57610812
9,100.00	90.00	89.51	7,211.00	-524.27	2,317.21	14,747,012.42	1,758,175.40	40.60411772	-104.57574786
9,200.00	90.00	89.51	7,211.00	-523.42	2,417.21	14,747,013.73	1,758,275.39	40.60412002	-104.57538761
9,300.00	90.00	89.51	7,211.00	-522.58	2,517.21	14,747,015.05	1,758,375.38	40.60412232	-104.57502736
9,400.00	90.00	89.51	7,211.00	-521.73	2,617.20	14,747,016.37	1,758,475.37	40.60412462	-104.57466710
9,500.00	90.00	89.51	7,211.00	-520.88	2,717.20	14,747,017.69	1,758,575.36	40.60412691	-104.57430685
9,600.00	90.00	89.51	7,211.00	-520.03	2,817.20	14,747,019.01	1,758,675.35	40.60412921	-104.57394660
9,700.00	90.00	89.51	7,211.00	-519.19	2,917.19	14,747,020.33	1,758,775.35	40.60413150	-104.57358634
9,800.00	90.00	89.51	7,211.00	-518.34	3,017.19	14,747,021.65	1,758,875.34	40.60413379	-104.57322609
9,900.00	90.00	89.51	7,211.00	-517.49	3,117.18	14,747,022.97	1,758,975.33	40.60413608	-104.57286583
10,000.00	90.00	89.51	7,211.00	-516.65	3,217.18	14,747,024.29	1,759,075.32	40.60413837	-104.57250558

Database:	DB_Jul2216dt_v14	Local Co-ordinate Reference:	Well Almont 5-05-03L
Company:	Confluence Resources	TVD Reference:	RKB=5001+24 @ 5025.00ft
Project:	Weld County, Colorado	MD Reference:	RKB=5001+24 @ 5025.00ft
Site:	Section 06-T07N-R64W	North Reference:	True
Well:	Almont 5-05-03L	Survey Calculation Method:	Minimum Curvature
Wellbore:	Original Hole		
Design:	plan1		

Planned Survey									
Measured Depth (ft)	Inclination (°)	Azimuth (°)	Vertical Depth (ft)	+N/-S (ft)	+E/-W (ft)	Map Northing (usft)	Map Easting (usft)	Latitude	Longitude
10,100.00	90.00	89.51	7,211.00	-515.80	3,317.18	14,747,025.61	1,759,175.31	40.60414066	-104.57214533
10,200.00	90.00	89.51	7,211.00	-514.95	3,417.17	14,747,026.93	1,759,275.30	40.60414295	-104.57178507
10,300.00	90.00	89.51	7,211.00	-514.11	3,517.17	14,747,028.25	1,759,375.29	40.60414524	-104.57142482
10,400.00	90.00	89.51	7,211.00	-513.26	3,617.17	14,747,029.57	1,759,475.28	40.60414752	-104.57106456
10,500.00	90.00	89.51	7,211.00	-512.41	3,717.16	14,747,030.89	1,759,575.27	40.60414981	-104.57070431
10,600.00	90.00	89.51	7,211.00	-511.57	3,817.16	14,747,032.21	1,759,675.27	40.60415209	-104.57034406
10,700.00	90.00	89.51	7,211.00	-510.72	3,917.16	14,747,033.53	1,759,775.26	40.60415437	-104.56998380
10,800.00	90.00	89.51	7,211.00	-509.87	4,017.15	14,747,034.84	1,759,875.25	40.60415665	-104.56962355
10,900.00	90.00	89.51	7,211.00	-509.02	4,117.15	14,747,036.16	1,759,975.24	40.60415893	-104.56926329
11,000.00	90.00	89.51	7,211.00	-508.18	4,217.15	14,747,037.48	1,760,075.23	40.60416121	-104.56890304
11,100.00	90.00	89.51	7,211.00	-507.33	4,317.14	14,747,038.80	1,760,175.22	40.60416349	-104.56854279
11,200.00	90.00	89.51	7,211.00	-506.48	4,417.14	14,747,040.12	1,760,275.21	40.60416577	-104.56818253
11,300.00	90.00	89.51	7,211.00	-505.64	4,517.13	14,747,041.44	1,760,375.20	40.60416804	-104.56782228
11,400.00	90.00	89.51	7,211.00	-504.79	4,617.13	14,747,042.76	1,760,475.19	40.60417032	-104.56746202
11,500.00	90.00	89.51	7,211.00	-503.94	4,717.13	14,747,044.08	1,760,575.19	40.60417259	-104.56710177
11,600.00	90.00	89.51	7,211.00	-503.10	4,817.12	14,747,045.40	1,760,675.18	40.60417486	-104.56674152
11,700.00	90.00	89.51	7,211.00	-502.25	4,917.12	14,747,046.72	1,760,775.17	40.60417713	-104.56638126
11,800.00	90.00	89.51	7,211.00	-501.40	5,017.12	14,747,048.04	1,760,875.16	40.60417940	-104.56602101
11,900.00	90.00	89.51	7,211.00	-500.56	5,117.11	14,747,049.36	1,760,975.15	40.60418167	-104.56566075
12,000.00	90.00	89.51	7,211.00	-499.71	5,217.11	14,747,050.68	1,761,075.14	40.60418394	-104.56530050
12,100.00	90.00	89.51	7,211.00	-498.86	5,317.11	14,747,052.00	1,761,175.13	40.60418621	-104.56494024
12,200.00	90.00	89.51	7,211.00	-498.01	5,417.10	14,747,053.32	1,761,275.12	40.60418847	-104.56457999
12,300.00	90.00	89.51	7,211.00	-497.17	5,517.10	14,747,054.64	1,761,375.11	40.60419074	-104.56421974
12,400.00	90.00	89.51	7,211.00	-496.32	5,617.10	14,747,055.95	1,761,475.11	40.60419300	-104.56385948
12,500.00	90.00	89.51	7,211.00	-495.47	5,717.09	14,747,057.27	1,761,575.10	40.60419526	-104.56349923
12,600.00	90.00	89.51	7,211.00	-494.63	5,817.09	14,747,058.59	1,761,675.09	40.60419752	-104.56313897
12,700.00	90.00	89.51	7,211.00	-493.78	5,917.08	14,747,059.91	1,761,775.08	40.60419978	-104.56277872
12,800.00	90.00	89.51	7,211.00	-492.93	6,017.08	14,747,061.23	1,761,875.07	40.60420204	-104.56241846
12,900.00	90.00	89.51	7,211.00	-492.09	6,117.08	14,747,062.55	1,761,975.06	40.60420430	-104.56205821
13,000.00	90.00	89.51	7,211.00	-491.24	6,217.07	14,747,063.87	1,762,075.05	40.60420655	-104.56169796
13,100.00	90.00	89.51	7,211.00	-490.39	6,317.07	14,747,065.19	1,762,175.04	40.60420881	-104.56133770
13,200.00	90.00	89.51	7,211.00	-489.55	6,417.07	14,747,066.51	1,762,275.03	40.60421106	-104.56097745
13,300.00	90.00	89.51	7,211.00	-488.70	6,517.06	14,747,067.83	1,762,375.03	40.60421332	-104.56061719
13,400.00	90.00	89.51	7,211.00	-487.85	6,617.06	14,747,069.15	1,762,475.02	40.60421557	-104.56025694
13,500.00	90.00	89.51	7,211.00	-487.00	6,717.06	14,747,070.47	1,762,575.01	40.60421782	-104.55989668
13,600.00	90.00	89.51	7,211.00	-486.16	6,817.05	14,747,071.79	1,762,675.00	40.60422007	-104.55953643
13,700.00	90.00	89.51	7,211.00	-485.31	6,917.05	14,747,073.11	1,762,774.99	40.60422232	-104.55917618
13,800.00	90.00	89.51	7,211.00	-484.46	7,017.05	14,747,074.43	1,762,874.98	40.60422456	-104.55881592
13,900.00	90.00	89.51	7,211.00	-483.62	7,117.04	14,747,075.75	1,762,974.97	40.60422681	-104.55845567
14,000.00	90.00	89.51	7,211.00	-482.77	7,217.04	14,747,077.06	1,763,074.96	40.60422906	-104.55809541
14,100.00	90.00	89.51	7,211.00	-481.92	7,317.03	14,747,078.38	1,763,174.95	40.60423130	-104.55773516
14,200.00	90.00	89.51	7,211.00	-481.08	7,417.03	14,747,079.70	1,763,274.95	40.60423354	-104.55737490
14,300.00	90.00	89.51	7,211.00	-480.23	7,517.03	14,747,081.02	1,763,374.94	40.60423578	-104.55701465
14,400.00	90.00	89.51	7,211.00	-479.38	7,617.02	14,747,082.34	1,763,474.93	40.60423802	-104.55665439
14,500.00	90.00	89.51	7,211.00	-478.54	7,717.02	14,747,083.66	1,763,574.92	40.60424026	-104.55629414
14,600.00	90.00	89.51	7,211.00	-477.69	7,817.02	14,747,084.98	1,763,674.91	40.60424250	-104.55593388
14,700.00	90.00	89.51	7,211.00	-476.84	7,917.01	14,747,086.30	1,763,774.90	40.60424474	-104.55557363
14,800.00	90.00	89.51	7,211.00	-475.99	8,017.01	14,747,087.62	1,763,874.89	40.60424698	-104.55521338
14,900.00	90.00	89.51	7,211.00	-475.15	8,117.01	14,747,088.94	1,763,974.88	40.60424921	-104.55485312
15,000.00	90.00	89.51	7,211.00	-474.30	8,217.00	14,747,090.26	1,764,074.87	40.60425145	-104.55449287
15,100.00	90.00	89.51	7,211.00	-473.45	8,317.00	14,747,091.58	1,764,174.87	40.60425368	-104.55413261
15,200.00	90.00	89.51	7,211.00	-472.61	8,416.99	14,747,092.90	1,764,274.86	40.60425591	-104.55377236
15,300.00	90.00	89.51	7,211.00	-471.76	8,516.99	14,747,094.22	1,764,374.85	40.60425814	-104.55341210
15,400.00	90.00	89.51	7,211.00	-470.91	8,616.99	14,747,095.54	1,764,474.84	40.60426037	-104.55305185
15,500.00	90.00	89.51	7,211.00	-470.07	8,716.98	14,747,096.86	1,764,574.83	40.60426260	-104.55269159

Database:	DB_Jul2216dt_v14	Local Co-ordinate Reference:	Well Almont 5-05-03L
Company:	Confluence Resources	TVD Reference:	RKB=5001+24 @ 5025.00ft
Project:	Weld County, Colorado	MD Reference:	RKB=5001+24 @ 5025.00ft
Site:	Section 06-T07N-R64W	North Reference:	True
Well:	Almont 5-05-03L	Survey Calculation Method:	Minimum Curvature
Wellbore:	Original Hole		
Design:	plan1		

Planned Survey									
Measured Depth (ft)	Inclination (°)	Azimuth (°)	Vertical Depth (ft)	+N/-S (ft)	+E/-W (ft)	Map Northing (usft)	Map Easting (usft)	Latitude	Longitude
15,600.00	90.00	89.51	7,211.00	-469.22	8,816.98	14,747,098.17	1,764,674.82	40.60426482	-104.55233134
15,700.00	90.00	89.51	7,211.00	-468.37	8,916.98	14,747,099.49	1,764,774.81	40.60426705	-104.55197108
15,800.00	90.00	89.51	7,211.00	-467.53	9,016.97	14,747,100.81	1,764,874.80	40.60426928	-104.55161083
15,900.00	90.00	89.51	7,211.00	-466.68	9,116.97	14,747,102.13	1,764,974.79	40.60427150	-104.55125057
16,000.00	90.00	89.51	7,211.00	-465.83	9,216.97	14,747,103.45	1,765,074.79	40.60427372	-104.55089032
16,100.00	90.00	89.51	7,211.00	-464.98	9,316.96	14,747,104.77	1,765,174.78	40.60427594	-104.55053006
16,200.00	90.00	89.51	7,211.00	-464.14	9,416.96	14,747,106.09	1,765,274.77	40.60427816	-104.55016981
16,300.00	90.00	89.51	7,211.00	-463.29	9,516.96	14,747,107.41	1,765,374.76	40.60428038	-104.54980955
16,400.00	90.00	89.51	7,211.00	-462.44	9,616.95	14,747,108.73	1,765,474.75	40.60428260	-104.54944930
16,500.00	90.00	89.51	7,211.00	-461.60	9,716.95	14,747,110.05	1,765,574.74	40.60428482	-104.54908905
16,600.00	90.00	89.51	7,211.00	-460.75	9,816.94	14,747,111.37	1,765,674.73	40.60428703	-104.54872879
16,700.00	90.00	89.51	7,211.00	-459.90	9,916.94	14,747,112.69	1,765,774.72	40.60428925	-104.54836854
16,800.00	90.00	89.51	7,211.00	-459.06	10,016.94	14,747,114.01	1,765,874.71	40.60429146	-104.54800828
16,900.00	90.00	89.51	7,211.00	-458.21	10,116.93	14,747,115.33	1,765,974.71	40.60429368	-104.54764803
17,000.00	90.00	89.51	7,211.00	-457.36	10,216.93	14,747,116.65	1,766,074.70	40.60429589	-104.54728777
17,100.00	90.00	89.51	7,211.00	-456.51	10,316.93	14,747,117.97	1,766,174.69	40.60429810	-104.54692752
17,200.00	90.00	89.51	7,211.00	-455.67	10,416.92	14,747,119.28	1,766,274.68	40.60430031	-104.54656726
17,232.95	90.00	89.51	7,211.00	-455.39	10,449.88	14,747,119.72	1,766,307.63	40.60430103	-104.54644854
PBHL/TD 17232.95 MD/7211.00 TVD									

Design Targets									
Target Name	Dip Angle (°)	Dip Dir. (°)	TVD (ft)	+N/-S (ft)	+E/-W (ft)	Northing (usft)	Easting (usft)	Latitude	Longitude
- hit/miss target									
- Shape									
Almont 5-05-03L PBHL 1	0.00	0.00	7,211.00	-455.39	10,449.88	14,747,119.72	1,766,307.63	40.60430103	-104.54644854
- plan hits target center									
- Point									
Almont 5-05-03L LP 184	0.00	0.00	7,211.00	-537.12	800.23	14,746,992.40	1,756,658.50	40.60408271	-104.58121304
- plan hits target center									
- Point									

Plan Annotations				
Measured Depth (ft)	Vertical Depth (ft)	Local Coordinates		Comment
		+N/-S (ft)	+E/-W (ft)	
3,000.00	3,000.00	0.00	0.00	KOP Begin 1°/100' build
3,912.85	3,908.99	-65.17	31.92	Begin 9.13° tangent
6,722.29	6,682.85	-465.44	228.00	Begin 10°/100' build/turn
7,582.97	7,211.00	-537.12	800.23	Begin 90.00° lateral
17,232.95	7,211.00	-455.39	10,449.88	PBHL/TD 17232.95 MD/7211.00 TVD