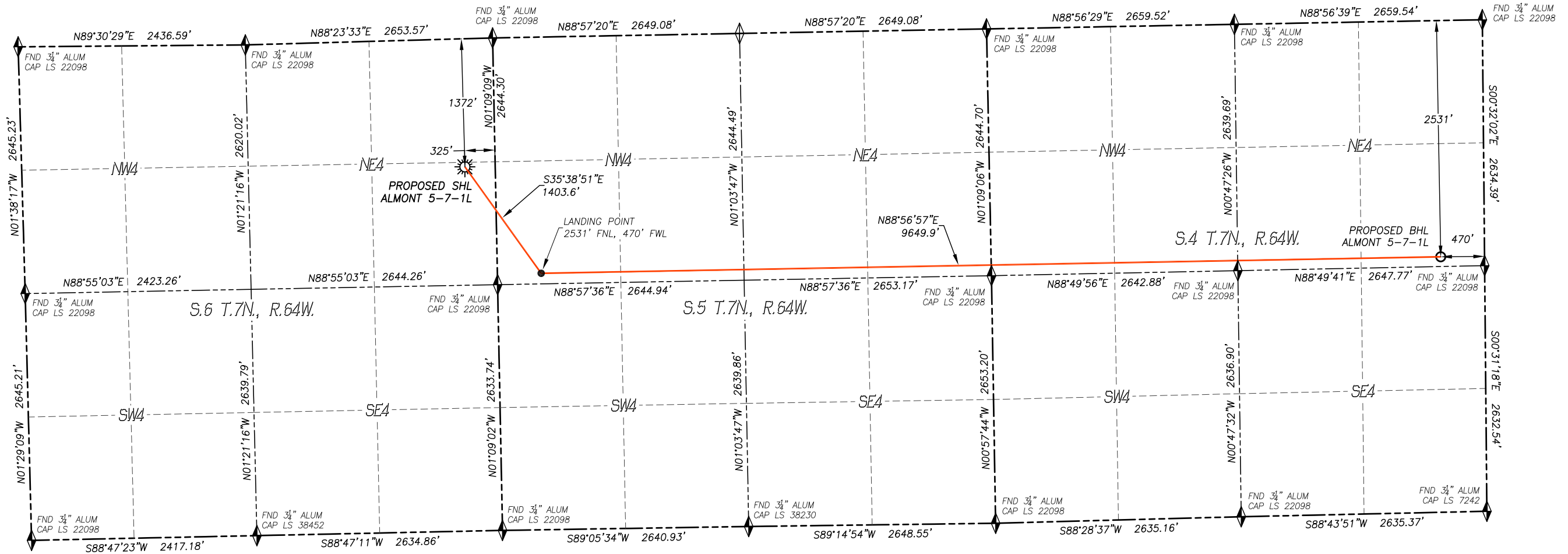


WELL LOCATION CERTIFICATE
ALMONT 5-7-1L
SECTION 6, TOWNSHIP 7 NORTH, RANGE 64 WEST OF THE 6TH P.M.



IN ACCORDANCE WITH A REQUEST FROM CONFLUENCE RESOURCES, DALEY LAND SURVEYING, INC. HAS DETERMINED THE SURFACE LOCATION OF THE ALMONT 5-7-1L WELL TO BE 1372' FNL, 325' FEL, AS MEASURED AT NINETY (90) DEGREES FROM THE SECTION LINES OF SECTION 6, TOWNSHIP 7 NORTH, RANGE 64 WEST, AND THE BOTTOM HOLE LOCATION TO BE 2531' FNL, 470' FEL, AS MEASURED AT NINETY (90) DEGREES FROM THE SECTION LINES OF SECTION 4, TOWNSHIP 7 NORTH, RANGE 64 WEST, OF THE 6TH PRINCIPAL MERIDIAN, WELD COUNTY, COLORADO.

I HEREBY STATE THAT THIS WELL LOCATION CERTIFICATE WAS PREPARED BY ME OR UNDER MY DIRECT SUPERVISION, THAT THE WORK WAS COMPLETED ON 2/3/2018 FOR AND ON BEHALF OF CONFLUENCE RESOURCES, AND THAT THIS MAP DOES NOT REPRESENT A BOUNDARY SURVEY, IT IS NOT A LAND SURVEY PLAT OR AN IMPROVEMENT SURVEY PLAT AND IT IS NOT TO BE RELIED UPON FOR THE ESTABLISHMENT OF FENCE, BUILDING OR OTHER FUTURE IMPROVEMENT LINES.



- NOTES:**
- BEARINGS FOR THIS MAP ARE ASSUMED AND BASED UPON GPS OBSERVATIONS MADE BETWEEN MONUMENTS LOCATED AT THE NORTHEAST CORNER AND EAST QUARTER CORNER OF SECTION 6, T.7N., R.64W.
 - HORIZONTAL DATUM IS NAD83.
 - VERTICAL DATUM IS NAVD88 AND ORIGINATES FROM THE LOCAL C.O.R.S. NETWORK, UTILIZING THE GEOID12A MODEL.
 - SEE LOCATION DRAWING FOR VISIBLE IMPROVEMENTS WITHIN 500' OF PROPOSED DISTURBED AREA.
 - SURFACE USE: PASTURE/RANGELAND.
 - INST. OPERATOR: KYLE DALEY

NEAREST CULTURAL ITEMS:

BUILDING:	4573'± N
BUILDING UNIT:	1606'± NE
HIGH OCC. BLD. UNIT:	5280'±
DES. OUTSIDE ACTIVITY AREA:	5280'±
PUBLIC ROAD:	314'± E
ABOVE GROUND UTILITY:	298'± E
RAILROAD:	5280'±
PROPERTY LINE:	325'± E

NAD 83 LATITUDE AND LONGITUDE

SURFACE LOCATION:

LATITUDE:	N40.60536°
LONGITUDE:	W104.58409°
ELEV.:	5002'
PDOP.:	1.4
QTR/QTR:	SE4/NE4

LANDING POINT:

LATITUDE:	N40.60220°
LONGITUDE:	W104.58119°
BOTTOM HOLE:	
LATITUDE:	N40.60241°
LONGITUDE:	W104.54645°

LEGEND

- FOUND MONUMENT AS DESCRIBED
- CALCULATED POSITION
- PROPOSED WELL
- EXISTING WELL
- BOTTOM HOLE

