

Great Western Operating Company, LLC

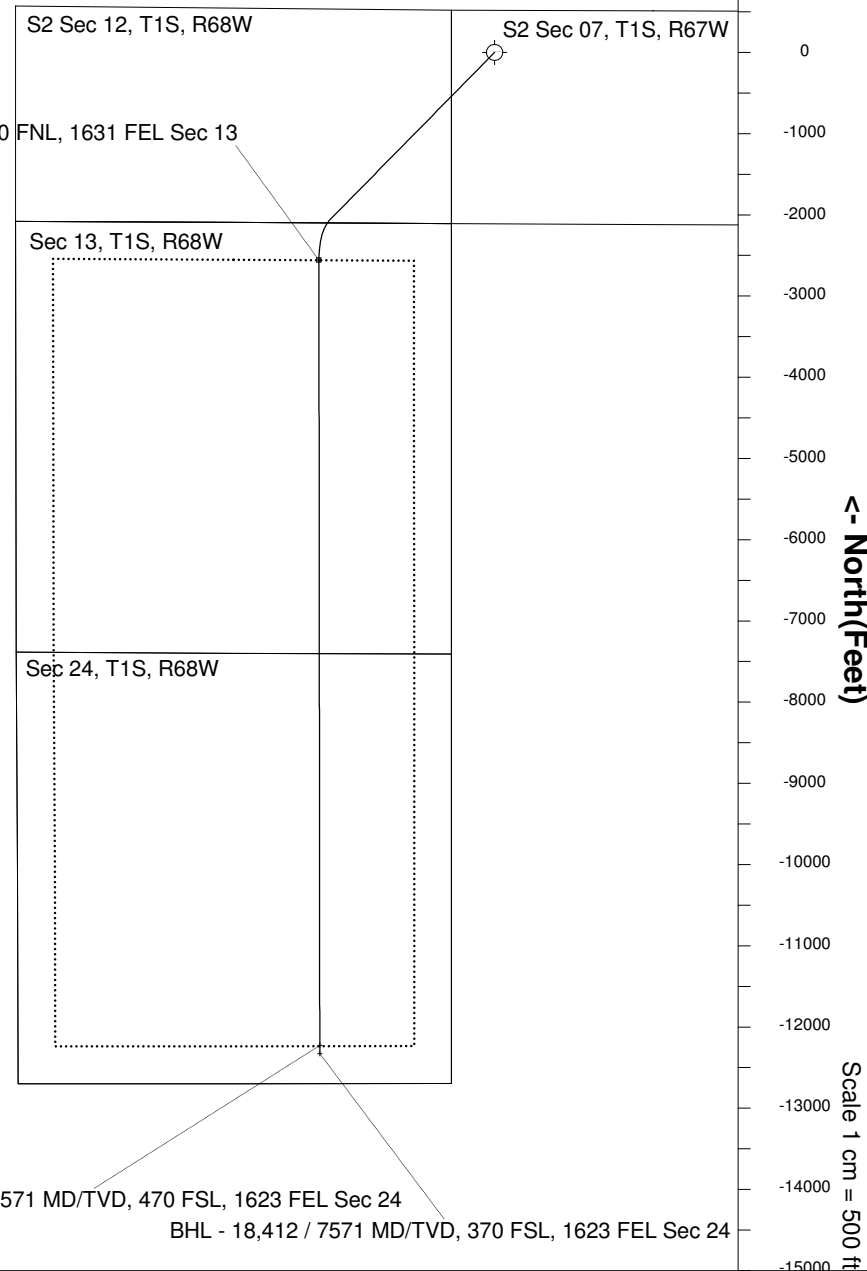
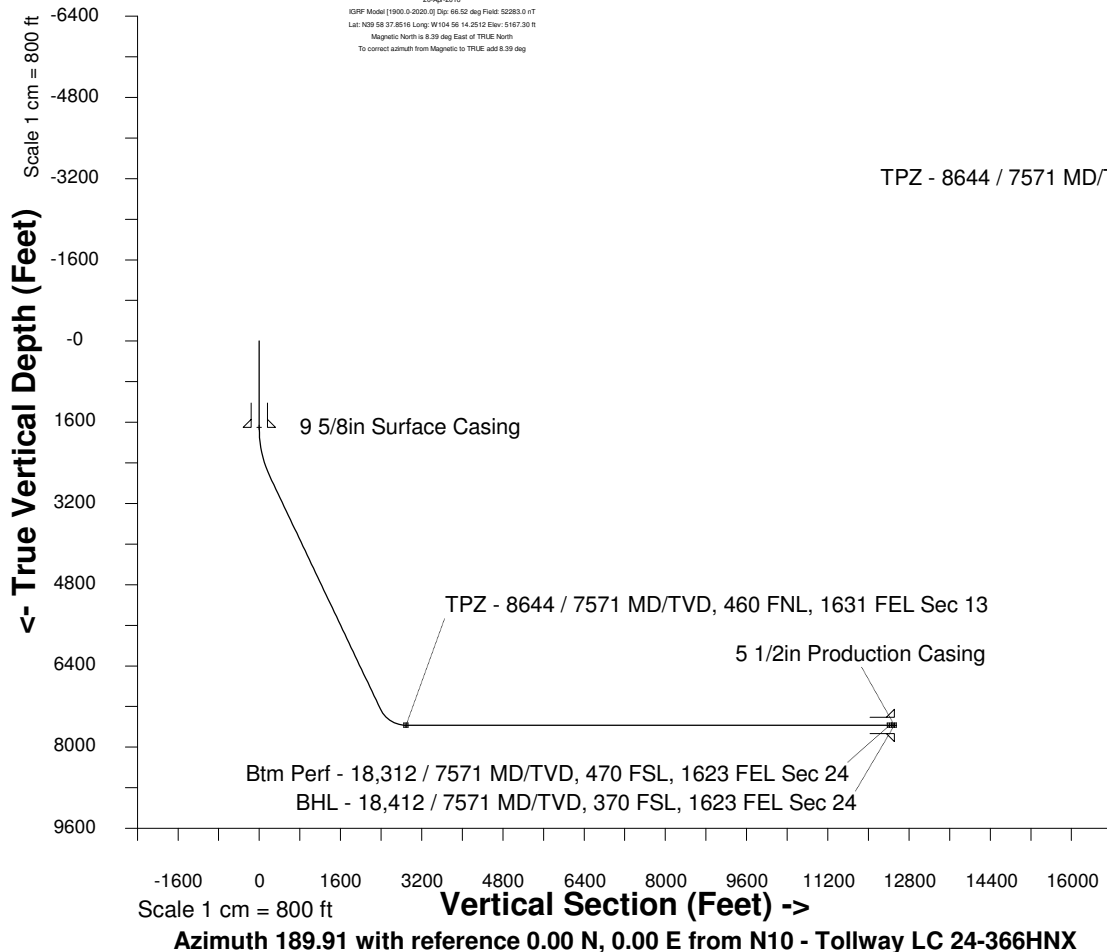
Location Colorado
Field Wattenburg
Installation Tollway
Slot N10 - Tollway LC 24-366HNX
Well Tollway LC 24-366HNX
Wellbore Tollway LC 24-366HNX (PWB)

Scale 1 cm = 500 ft

East (Feet) ->

Created by admin
Date plotted 17-Jan-2018
Plot reference is Tollway LC 24-366HNX (PWB).
Ref wellpath is Tollway LC 24-366HNX (PWP#1).
Coordinates are in Feet reference N10 - Tollway LC 24-366HNX.
True Vertical Depths are reference Rig Datum.
Measured Depths are reference Rig Datum.
Rig Datum: Planned Datum #1
Rig Datum to Mean Sea Level: 5187.30 ft.
Plot North is aligned to TRUE North.

20-Apr-2016
KOPF Model [1900.0-2020.0] Dip: 66.52 deg Field: 52283.0 rT
Lat: N29 58 37.8516 Long: W104 56 14.2512 Elev: 5167.30 ft
Magnetic North is 8.39 deg East of TRUE North
To correct azimuth from Magnetic to TRUE, add 8.39 deg



WELL PROFILE DATA

Point	MD	Inc	Azi	TVD	North	East	deg/100ft	V. Sect
Tie on	0.00	0.00	0.00	0.00	S 0.00	W 0.00		-0.00
KOP	1716.00	0.00	224.52	1716.00	S 0.00	W 0.00	0.00	-0.00
End of Build	2716.10	30.00	224.52	2671.02	S 182.47	W 179.45	9.84	210.62
End of Hold	8015.39	30.00	224.52	7260.20	S 2071.79	W 2037.50	0.00	2391.40
Target TPZ - ...Sec 13	8643.90	90.00	179.94	7571.00	S 2558.65	W 2162.95	36.09	2892.58
Target Btm Pe...Sec 24	18312.02	90.00	179.94	7571.00	S 12226.77	W 2152.57	0.00	12414.79
End of Turn	18312.63	90.00	180.01	7571.00	S 12227.37	W 2152.57	36.09	12415.39
T.D. & Target BHL... 24	18412.20	90.00	180.01	7571.00	S 12326.94	W 2152.58	0.00	12513.48