

PDC Energy Inc. DJ Basin

Well Name: **McGlothlin Farms 4W-334**

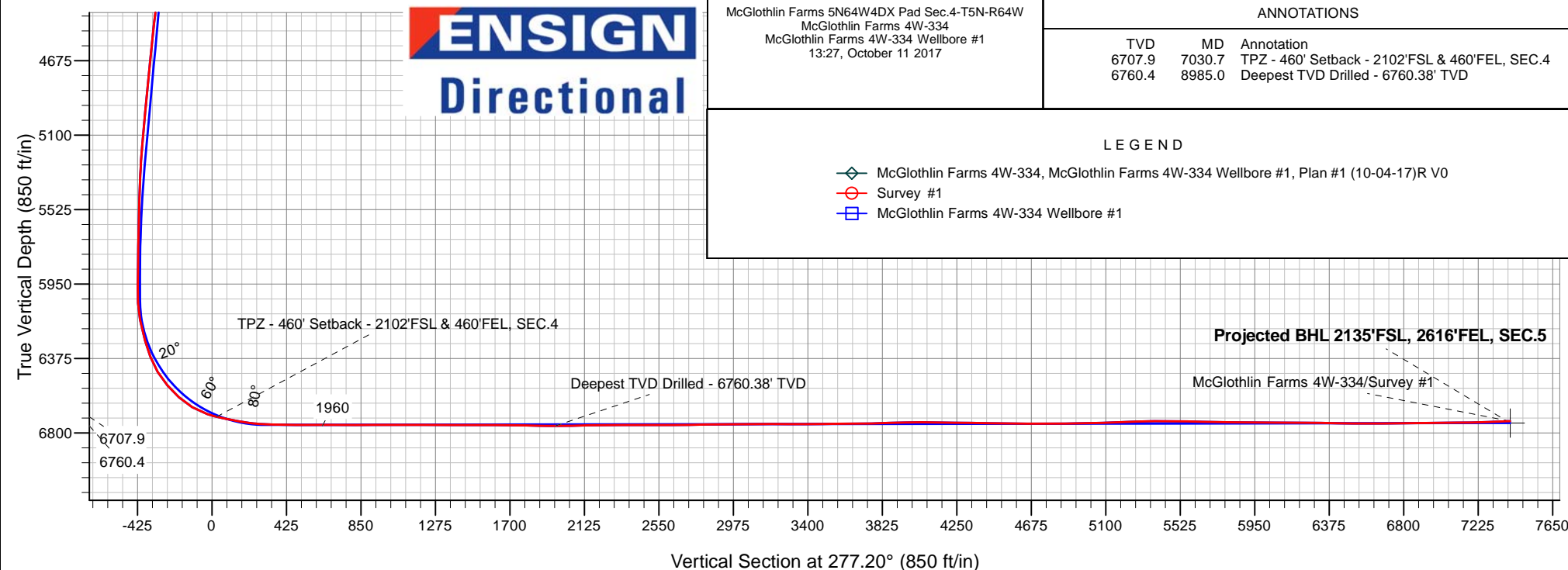
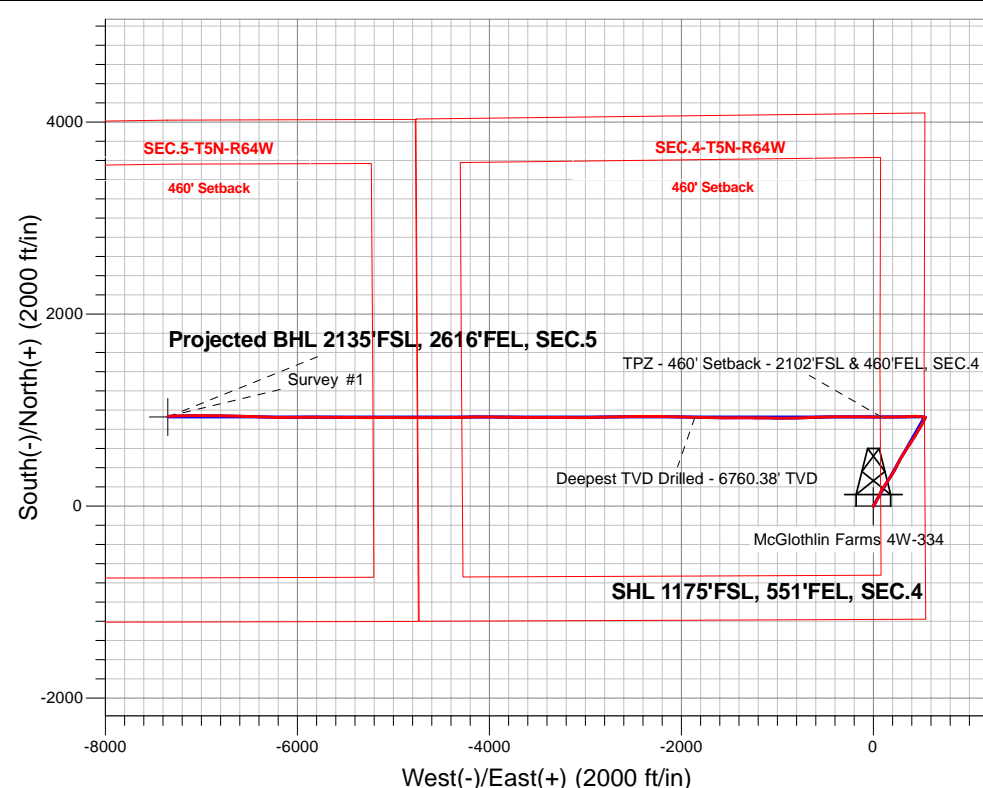
Surface Location: McGlothlin Farms 5N64W4DX Pad Sec.4-T5N-R64W
North American Datum 1983 , US State Plane 1983, Colorado Northern Zone

Ground Elevation: 4616.0

+N/-S+E/-W Northing Easting Latitude Longitude Slot
0.0 0.0 1398807.253265120.27 40.424220 -104.547719
Ensign Rig #161 - RKB - 23'WELL @ 4639.0ft (Ensign Rig #161 - RKB - 23')

FINAL SURVEY

Projected Bottom Hole Location
14,475'MD 6733'TVD 937'N & 7348'W of SHL
92.7 degree Incl @ 268.2 degree AZM





PDC Energy Inc. DJ Basin

SEC.4-T5N-R64W

McGlothlin Farms 5N64W4DX Pad Sec.4-T5N-R64W

McGlothlin Farms 4W-334

McGlothlin Farms 4W-334 Wellbore #1

Survey: Survey #1

Standard Survey Report

11 October, 2017

Company:	PDC Energy Inc. DJ Basin	Local Co-ordinate Reference:	Well McGlothlin Farms 4W-334
Project:	SEC.4-T5N-R64W	TVD Reference:	WELL @ 4639.0ft (Ensign Rig #161 - RKB - 23')
Site:	McGlothlin Farms 5N64W4DX Pad Sec.4-T5N-R64W	MD Reference:	WELL @ 4639.0ft (Ensign Rig #161 - RKB - 23')
Well:	McGlothlin Farms 4W-334	North Reference:	True
Wellbore:	McGlothlin Farms 4W-334 Wellbore #1	Survey Calculation Method:	Minimum Curvature
Design:	McGlothlin Farms 4W-334 Wellbore #1	Database:	US_EDM

Project	SEC.4-T5N-R64W, Weld County, Colorado		
Map System:	US State Plane 1983	System Datum:	Mean Sea Level
Geo Datum:	North American Datum 1983		Using Well Reference Point
Map Zone:	Colorado Northern Zone		Using geodetic scale factor

Site	McGlothlin Farms 5N64W4DX Pad Sec.4-T5N-R64W				
Site Position:		Northing:	1,398,838.61 usft	Latitude:	40.424309
From:	Lat/Long	Easting:	3,265,019.98 usft	Longitude:	-104.548078
Position Uncertainty:	0.0 ft	Slot Radius:	13-3/16 "	Grid Convergence:	0.62 °

Well	McGlothlin Farms 4W-334					
Well Position	+N/-S	0.0 ft	Northing:	1,398,807.25 usft	Latitude:	40.424220
	+E/-W	0.0 ft	Easting:	3,265,120.27 usft	Longitude:	-104.547719
Position Uncertainty		0.0 ft	Wellhead Elevation:	0.0 ft	Ground Level:	4,616.0 ft

Wellbore	McGlothlin Farms 4W-334 Wellbore #1				
Magnetics	Model Name	Sample Date	Declination (°)	Dip Angle (°)	Field Strength (nT)
	IGRF2010	10/4/2017	7.90	66.88	52,504

Design	McGlothlin Farms 4W-334 Wellbore #1				
Audit Notes:					
Version:	1.0	Phase:	ACTUAL	Tie On Depth:	0.0
Vertical Section:	Depth From (TVD) (ft)	+N/-S (ft)	+E/-W (ft)	Direction (°)	
	0.0	0.0	0.0	277.20	

Survey Program	Date	10/11/2017			
From (ft)	To (ft)	Survey (Wellbore)	Tool Name	Description	
156.0	14,475.0	Survey #1 (McGlothlin Farms 4W-334 We	MWD	MWD - Standard	

Survey										
Measured Depth (ft)	Inclination (°)	Azimuth (°)	Vertical Depth (ft)	+N/-S (ft)	+E/-W (ft)	Vertical Section (ft)	Dogleg Rate (°/100usft)	Build Rate (°/100usft)	Turn Rate (°/100usft)	
0.0	0.00	0.00	0.0	0.0	0.0	0.0	0.00	0.00	0.00	
1.0	0.00	213.90	1.0	0.0	0.0	0.0	0.00	0.00	0.00	
SHL 1175°FSL, 551°FEL, SEC.4										
156.0	0.20	213.90	156.0	-0.2	-0.2	0.1	0.13	0.13	0.00	
252.0	0.20	207.90	252.0	-0.5	-0.3	0.3	0.02	0.00	-6.25	
347.0	0.20	123.60	347.0	-0.8	-0.3	0.2	0.28	0.00	-88.74	
443.0	0.10	88.90	443.0	-0.8	0.0	-0.1	0.14	-0.10	-36.15	
539.0	0.40	140.80	539.0	-1.1	0.3	-0.4	0.36	0.31	54.06	
634.0	0.20	171.40	634.0	-1.5	0.5	-0.7	0.26	-0.21	32.21	
730.0	0.60	62.70	730.0	-1.5	1.0	-1.1	0.72	0.42	-113.23	

Company:	PDC Energy Inc. DJ Basin	Local Co-ordinate Reference:	Well McGlothlin Farms 4W-334
Project:	SEC.4-T5N-R64W	TVD Reference:	WELL @ 4639.0ft (Ensign Rig #161 - RKB - 23')
Site:	McGlothlin Farms 5N64W4DX Pad Sec.4-T5N-R64W	MD Reference:	WELL @ 4639.0ft (Ensign Rig #161 - RKB - 23')
Well:	McGlothlin Farms 4W-334	North Reference:	True
Wellbore:	McGlothlin Farms 4W-334 Wellbore #1	Survey Calculation Method:	Minimum Curvature
Design:	McGlothlin Farms 4W-334 Wellbore #1	Database:	US_EDM

Survey										
Measured Depth (ft)	Inclination (°)	Azimuth (°)	Vertical Depth (ft)	+N/-S (ft)	+E/-W (ft)	Vertical Section (ft)	Dogleg Rate (°/100usft)	Build Rate (°/100usft)	Turn Rate (°/100usft)	
825.0	2.60	36.70	825.0	0.5	2.7	-2.6	2.19	2.11	-27.37	
921.0	4.80	27.10	920.7	5.8	5.8	-5.0	2.37	2.29	-10.00	
1,017.0	6.20	25.00	1,016.3	14.1	9.8	-8.0	1.47	1.46	-2.19	
1,112.0	8.00	27.90	1,110.6	24.6	15.1	-11.9	1.93	1.89	3.05	
1,208.0	9.30	29.30	1,205.5	37.3	22.0	-17.2	1.37	1.35	1.46	
1,304.0	10.90	26.20	1,300.0	52.2	29.8	-23.1	1.76	1.67	-3.23	
1,400.0	11.60	26.70	1,394.1	68.9	38.2	-29.2	0.74	0.73	0.52	
1,496.0	12.30	27.40	1,488.1	86.6	47.2	-36.0	0.74	0.73	0.73	
1,591.0	11.80	29.70	1,581.0	104.1	56.7	-43.2	0.73	-0.53	2.42	
1,625.0	11.30	26.00	1,614.3	110.1	59.9	-45.6	2.63	-1.47	-10.88	
1,683.0	11.20	25.80	1,671.2	120.2	64.8	-49.2	0.19	-0.17	-0.34	
1,779.0	11.10	23.50	1,765.4	137.1	72.6	-54.8	0.47	-0.10	-2.40	
1,874.0	12.20	29.70	1,858.4	154.2	81.2	-61.2	1.75	1.16	6.53	
1,970.0	13.30	31.60	1,952.0	172.4	92.0	-69.7	1.23	1.15	1.98	
2,065.0	15.70	32.30	2,044.0	192.6	104.6	-79.6	2.53	2.53	0.74	
2,160.0	14.50	33.00	2,135.7	213.5	117.9	-90.3	1.28	-1.26	0.74	
2,256.0	13.50	33.40	2,228.9	232.9	130.6	-100.4	1.05	-1.04	0.42	
2,352.0	15.20	33.60	2,321.9	252.7	143.8	-111.0	1.77	1.77	0.21	
2,447.0	14.80	34.30	2,413.6	273.1	157.5	-122.0	0.46	-0.42	0.74	
2,543.0	14.30	33.60	2,506.5	293.1	171.0	-132.9	0.55	-0.52	-0.73	
2,638.0	13.80	32.00	2,598.7	312.5	183.5	-142.9	0.67	-0.53	-1.68	
2,733.0	15.40	31.80	2,690.6	332.8	196.1	-152.9	1.69	1.68	-0.21	
2,829.0	14.90	30.40	2,783.3	354.3	209.1	-163.0	0.65	-0.52	-1.46	
2,925.0	14.50	28.50	2,876.2	375.5	221.1	-172.3	0.65	-0.42	-1.98	
3,020.0	13.90	27.40	2,968.3	396.1	232.0	-180.5	0.69	-0.63	-1.16	
3,116.0	13.10	25.80	3,061.6	416.1	242.0	-188.0	0.92	-0.83	-1.67	
3,212.0	13.50	27.60	3,155.0	435.9	252.0	-195.4	0.60	0.42	1.88	
3,308.0	14.60	26.70	3,248.2	456.6	262.6	-203.3	1.17	1.15	-0.94	
3,404.0	13.00	26.20	3,341.4	477.1	272.8	-210.9	1.67	-1.67	-0.52	
3,499.0	13.50	33.00	3,433.9	496.0	283.6	-219.2	1.72	0.53	7.16	
3,595.0	13.30	32.70	3,527.2	514.7	295.6	-228.8	0.22	-0.21	-0.31	
3,691.0	15.60	31.80	3,620.2	535.0	308.4	-238.9	2.41	2.40	-0.94	
3,787.0	15.60	32.30	3,712.7	556.8	322.1	-249.8	0.14	0.00	0.52	
3,883.0	15.70	31.60	3,805.1	578.8	335.8	-260.6	0.22	0.10	-0.73	
3,978.0	14.90	32.20	3,896.7	600.1	349.0	-271.1	0.86	-0.84	0.63	
4,074.0	13.70	31.30	3,989.8	620.2	361.5	-280.9	1.27	-1.25	-0.94	
4,170.0	13.00	32.70	4,083.2	639.0	373.3	-290.2	0.80	-0.73	1.46	
4,265.0	12.60	34.80	4,175.8	656.5	384.9	-299.6	0.65	-0.42	2.21	
4,361.0	14.50	33.70	4,269.1	675.1	397.6	-309.9	2.00	1.98	-1.15	
4,457.0	14.00	31.80	4,362.2	695.0	410.4	-320.0	0.71	-0.52	-1.98	
4,553.0	13.30	34.40	4,455.5	714.0	422.7	-329.9	0.97	-0.73	2.71	
4,648.0	14.50	31.60	4,547.7	733.1	435.1	-339.8	1.45	1.26	-2.95	

Company:	PDC Energy Inc. DJ Basin	Local Co-ordinate Reference:	Well McGlothlin Farms 4W-334
Project:	SEC.4-T5N-R64W	TVD Reference:	WELL @ 4639.0ft (Ensign Rig #161 - RKB - 23')
Site:	McGlothlin Farms 5N64W4DX Pad Sec.4-T5N-R64W	MD Reference:	WELL @ 4639.0ft (Ensign Rig #161 - RKB - 23')
Well:	McGlothlin Farms 4W-334	North Reference:	True
Wellbore:	McGlothlin Farms 4W-334 Wellbore #1	Survey Calculation Method:	Minimum Curvature
Design:	McGlothlin Farms 4W-334 Wellbore #1	Database:	US_EDM

Survey									
Measured Depth (ft)	Inclination (°)	Azimuth (°)	Vertical Depth (ft)	+N/-S (ft)	+E/-W (ft)	Vertical Section (ft)	Dogleg Rate (°/100usft)	Build Rate (°/100usft)	Turn Rate (°/100usft)
4,744.0	14.30	29.70	4,640.7	753.7	447.3	-349.3	0.53	-0.21	-1.98
4,840.0	13.30	29.30	4,733.9	773.6	458.6	-358.0	1.05	-1.04	-0.42
4,936.0	14.60	30.60	4,827.1	793.7	470.2	-367.0	1.39	1.35	1.35
5,032.0	14.30	30.20	4,920.0	814.3	482.3	-376.4	0.33	-0.31	-0.42
5,128.0	13.40	30.40	5,013.2	834.2	493.9	-385.4	0.94	-0.94	0.21
5,223.0	11.80	29.90	5,105.9	852.1	504.3	-393.5	1.69	-1.68	-0.53
5,319.0	10.90	30.40	5,200.1	868.4	513.8	-400.9	0.94	-0.94	0.52
5,415.0	9.60	26.20	5,294.5	883.4	521.9	-407.1	1.56	-1.35	-4.38
5,511.0	7.50	26.70	5,389.5	896.2	528.3	-411.8	2.19	-2.19	0.52
5,607.0	6.90	19.50	5,484.7	907.2	533.0	-415.1	1.13	-0.63	-7.50
5,703.0	4.40	28.30	5,580.2	915.9	536.7	-417.7	2.75	-2.60	9.17
5,798.0	1.80	27.80	5,675.1	920.4	539.1	-419.5	2.74	-2.74	-0.53
5,894.0	1.10	34.80	5,771.1	922.5	540.3	-420.4	0.75	-0.73	7.29
5,990.0	1.60	40.80	5,867.0	924.3	541.7	-421.6	0.54	0.52	6.25
6,086.0	1.20	61.20	5,963.0	925.8	543.5	-423.2	0.66	-0.42	21.25
6,181.0	2.60	264.70	6,058.0	926.1	542.2	-421.9	3.93	1.47	-164.74
6,277.0	11.50	275.80	6,153.2	926.9	530.5	-410.2	9.34	9.27	11.56
6,401.0	15.20	283.00	6,273.8	931.8	502.3	-381.6	3.27	2.98	5.81
6,497.0	20.50	272.10	6,365.2	935.2	473.3	-352.3	6.50	5.52	-11.35
6,593.0	31.80	269.80	6,451.2	935.7	431.0	-310.4	11.82	11.77	-2.40
6,689.0	40.90	268.10	6,528.4	934.6	374.2	-254.1	9.54	9.48	-1.77
6,784.0	48.00	265.80	6,596.2	931.0	307.8	-188.7	7.66	7.47	-2.42
6,880.0	59.20	268.90	6,653.1	927.6	230.8	-112.7	11.95	11.67	3.23
6,976.0	71.80	270.20	6,692.8	926.9	143.6	-26.3	13.18	13.13	1.35
7,030.7	76.19	270.78	6,707.9	927.4	91.0	25.9	8.08	8.02	1.06
TPZ - 460' Setback - 2102'FSL & 460'FEL, SEC.4									
7,072.0	79.50	271.20	6,716.6	928.1	50.7	66.0	8.08	8.02	1.02
7,167.0	79.10	270.90	6,734.2	929.8	-42.7	158.9	0.52	-0.42	-0.32
7,263.0	85.10	270.50	6,747.4	931.0	-137.7	253.3	6.26	6.25	-0.42
7,311.4	87.22	270.15	6,750.7	931.2	-186.0	301.2	4.44	4.37	-0.73
LPL 2103'FSL, 732'FEL, SEC.4									
7,359.0	89.30	269.80	6,752.1	931.2	-233.6	348.4	4.44	4.38	-0.73
7,455.0	88.50	270.00	6,754.0	931.0	-329.6	443.6	0.86	-0.83	0.21
7,550.0	90.80	269.50	6,754.5	930.6	-424.5	537.8	2.48	2.42	-0.53
7,646.0	90.00	268.10	6,753.9	928.6	-520.5	632.8	1.68	-0.83	-1.46
7,742.0	89.50	267.90	6,754.3	925.3	-616.5	727.6	0.56	-0.52	-0.21
7,838.0	89.70	267.00	6,755.0	921.0	-712.4	822.2	0.96	0.21	-0.94
7,934.0	90.90	268.60	6,754.5	917.3	-808.3	916.9	2.08	1.25	1.67
8,029.0	90.00	270.70	6,753.7	916.7	-903.3	1,011.0	2.40	-0.95	2.21
8,125.0	90.00	270.50	6,753.7	917.7	-999.3	1,106.4	0.21	0.00	-0.21
8,221.0	89.60	270.70	6,754.1	918.7	-1,095.3	1,201.8	0.47	-0.42	0.21
8,316.0	89.60	269.80	6,754.7	919.2	-1,190.3	1,296.1	0.95	0.00	-0.95
8,411.0	89.90	271.20	6,755.1	920.0	-1,285.2	1,390.4	1.51	0.32	1.47

Company:	PDC Energy Inc. DJ Basin	Local Co-ordinate Reference:	Well McGlothlin Farms 4W-334
Project:	SEC.4-T5N-R64W	TVD Reference:	WELL @ 4639.0ft (Ensign Rig #161 - RKB - 23')
Site:	McGlothlin Farms 5N64W4DX Pad Sec.4-T5N-R64W	MD Reference:	WELL @ 4639.0ft (Ensign Rig #161 - RKB - 23')
Well:	McGlothlin Farms 4W-334	North Reference:	True
Wellbore:	McGlothlin Farms 4W-334 Wellbore #1	Survey Calculation Method:	Minimum Curvature
Design:	McGlothlin Farms 4W-334 Wellbore #1	Database:	US_EDM

Survey									
Measured Depth (ft)	Inclination (°)	Azimuth (°)	Vertical Depth (ft)	+N/-S (ft)	+E/-W (ft)	Vertical Section (ft)	Dogleg Rate (°/100usft)	Build Rate (°/100usft)	Turn Rate (°/100usft)
8,507.0	90.00	270.20	6,755.2	921.2	-1,381.2	1,485.8	1.05	0.10	-1.04
8,603.0	89.90	270.00	6,755.3	921.3	-1,477.2	1,581.1	0.23	-0.10	-0.21
8,699.0	89.70	269.50	6,755.6	920.9	-1,573.2	1,676.2	0.56	-0.21	-0.52
8,794.0	88.50	270.70	6,757.1	921.1	-1,668.2	1,770.5	1.79	-1.26	1.26
8,890.0	88.80	271.20	6,759.4	922.7	-1,764.2	1,865.9	0.61	0.31	0.52
8,985.0	90.00	271.90	6,760.4	925.2	-1,859.1	1,960.4	1.46	1.26	0.74
Deepest TVD Drilled - 6760.38' TVD									
9,081.0	91.40	272.10	6,759.2	928.6	-1,955.1	2,056.0	1.47	1.46	0.21
9,177.0	91.20	271.00	6,757.0	931.2	-2,051.0	2,151.5	1.16	-0.21	-1.15
9,273.0	90.60	271.00	6,755.5	932.8	-2,147.0	2,247.0	0.63	-0.63	0.00
9,369.0	90.10	270.70	6,754.9	934.3	-2,243.0	2,342.4	0.61	-0.52	-0.31
9,465.0	89.90	269.80	6,754.9	934.7	-2,339.0	2,437.7	0.96	-0.21	-0.94
9,561.0	89.80	269.30	6,755.2	933.9	-2,435.0	2,532.8	0.53	-0.10	-0.52
9,657.0	90.20	269.10	6,755.2	932.6	-2,531.0	2,627.9	0.47	0.42	-0.21
9,752.0	91.20	270.00	6,754.0	931.9	-2,625.9	2,722.0	1.42	1.05	0.95
9,848.0	90.80	268.60	6,752.4	930.7	-2,721.9	2,817.1	1.52	-0.42	-1.46
9,944.0	90.40	267.50	6,751.3	927.4	-2,817.9	2,911.9	1.22	-0.42	-1.15
10,039.0	90.30	268.40	6,750.8	924.0	-2,912.8	3,005.6	0.95	-0.11	0.95
10,135.0	90.70	269.60	6,749.9	922.3	-3,008.8	3,100.6	1.32	0.42	1.25
10,231.0	90.00	270.90	6,749.3	922.8	-3,104.8	3,195.9	1.54	-0.73	1.35
10,326.0	89.80	270.20	6,749.5	923.7	-3,199.8	3,290.3	0.77	-0.21	-0.74
10,422.0	90.10	269.60	6,749.6	923.5	-3,295.8	3,385.5	0.70	0.31	-0.63
10,517.0	90.60	271.00	6,749.0	924.0	-3,390.8	3,479.8	1.56	0.53	1.47
10,613.0	90.30	270.50	6,748.3	925.3	-3,486.7	3,575.2	0.61	-0.31	-0.52
10,708.0	90.40	269.30	6,747.7	925.1	-3,581.7	3,669.4	1.27	0.11	-1.26
10,804.0	91.50	270.70	6,746.1	925.1	-3,677.7	3,764.7	1.85	1.15	1.46
10,900.0	92.20	270.30	6,743.0	925.9	-3,773.7	3,860.0	0.84	0.73	-0.42
10,995.0	90.70	271.00	6,740.6	927.0	-3,868.6	3,954.3	1.74	-1.58	0.74
11,091.0	90.00	270.50	6,740.0	928.3	-3,964.6	4,049.7	0.90	-0.73	-0.52
11,187.0	89.30	270.20	6,740.6	928.8	-4,060.6	4,145.0	0.79	-0.73	-0.31
11,283.0	89.20	269.30	6,741.8	928.4	-4,156.6	4,240.2	0.94	-0.10	-0.94
11,379.0	89.10	268.40	6,743.3	926.5	-4,252.6	4,335.2	0.94	-0.10	-0.94
11,474.0	88.80	268.90	6,745.0	924.3	-4,347.5	4,429.1	0.61	-0.32	0.53
11,570.0	89.50	270.00	6,746.4	923.3	-4,443.5	4,524.2	1.36	0.73	1.15
11,666.0	89.40	269.50	6,747.4	922.9	-4,539.5	4,619.4	0.53	-0.10	-0.52
11,762.0	90.30	270.00	6,747.6	922.5	-4,635.5	4,714.6	1.07	0.94	0.52
11,857.0	90.00	269.50	6,747.4	922.1	-4,730.5	4,808.8	0.61	-0.32	-0.53
11,953.0	91.10	270.50	6,746.4	922.1	-4,826.5	4,904.0	1.55	1.15	1.04
12,049.0	91.30	270.20	6,744.4	922.7	-4,922.5	4,999.3	0.38	0.21	-0.31
12,144.0	91.40	270.70	6,742.2	923.4	-5,017.4	5,093.6	0.54	0.11	0.53
12,240.0	92.30	270.00	6,739.1	924.0	-5,113.4	5,188.9	1.19	0.94	-0.73
12,336.0	92.30	269.10	6,735.2	923.3	-5,209.3	5,283.9	0.94	0.00	-0.94
12,431.0	90.30	270.50	6,733.1	922.9	-5,304.3	5,378.1	2.57	-2.11	1.47

Company:	PDC Energy Inc. DJ Basin	Local Co-ordinate Reference:	Well McGlothlin Farms 4W-334
Project:	SEC.4-T5N-R64W	TVD Reference:	WELL @ 4639.0ft (Ensign Rig #161 - RKB - 23')
Site:	McGlothlin Farms 5N64W4DX Pad Sec.4-T5N-R64W	MD Reference:	WELL @ 4639.0ft (Ensign Rig #161 - RKB - 23')
Well:	McGlothlin Farms 4W-334	North Reference:	True
Wellbore:	McGlothlin Farms 4W-334 Wellbore #1	Survey Calculation Method:	Minimum Curvature
Design:	McGlothlin Farms 4W-334 Wellbore #1	Database:	US_EDM

Survey									
Measured Depth (ft)	Inclination (°)	Azimuth (°)	Vertical Depth (ft)	+N/-S (ft)	+E/-W (ft)	Vertical Section (ft)	Dogleg Rate (°/100usft)	Build Rate (°/100usft)	Turn Rate (°/100usft)
12,527.0	89.40	270.20	6,733.3	923.5	-5,400.3	5,473.4	0.99	-0.94	-0.31
12,623.0	89.40	270.50	6,734.3	924.1	-5,496.3	5,568.7	0.31	0.00	0.31
12,718.0	88.00	270.90	6,736.5	925.3	-5,591.2	5,663.1	1.53	-1.47	0.42
12,814.0	88.80	269.80	6,739.2	925.8	-5,687.2	5,758.4	1.42	0.83	-1.15
12,911.0	89.40	270.50	6,740.7	926.1	-5,784.2	5,854.6	0.95	0.62	0.72
13,006.0	90.60	270.00	6,740.7	926.5	-5,879.2	5,948.9	1.37	1.26	-0.53
13,102.0	89.30	269.60	6,740.8	926.2	-5,975.2	6,044.1	1.42	-1.35	-0.42
13,198.0	89.70	268.90	6,741.6	924.9	-6,071.2	6,139.2	0.84	0.42	-0.73
13,294.0	89.90	270.20	6,741.9	924.2	-6,167.2	6,234.4	1.37	0.21	1.35
13,390.0	89.00	271.80	6,742.9	925.8	-6,263.1	6,329.8	1.91	-0.94	1.67
13,485.0	88.70	272.50	6,744.8	929.4	-6,358.0	6,424.4	0.80	-0.32	0.74
13,582.0	90.20	272.10	6,745.7	933.3	-6,455.0	6,521.0	1.60	1.55	-0.41
13,678.0	89.20	271.70	6,746.2	936.5	-6,550.9	6,616.6	1.12	-1.04	-0.42
13,773.0	90.00	271.00	6,746.9	938.7	-6,645.9	6,711.1	1.12	0.84	-0.74
13,868.0	91.60	270.70	6,745.5	940.1	-6,740.8	6,805.5	1.71	1.68	-0.32
13,964.0	91.00	270.50	6,743.4	941.1	-6,836.8	6,900.9	0.66	-0.63	-0.21
14,060.0	90.70	270.70	6,741.9	942.1	-6,932.8	6,996.2	0.38	-0.31	0.21
14,156.0	90.00	270.00	6,741.4	942.7	-7,028.8	7,091.5	1.03	-0.73	-0.73
14,251.0	90.90	269.30	6,740.6	942.1	-7,123.8	7,185.7	1.20	0.95	-0.74
14,347.0	92.00	268.60	6,738.2	940.4	-7,219.7	7,280.7	1.36	1.15	-0.73
14,415.0	92.70	268.20	6,735.4	938.5	-7,287.7	7,347.8	1.19	1.03	-0.59
14,475.0	92.70	268.20	6,732.6	936.6	-7,347.6	7,407.0	0.00	0.00	0.00
BHL 2127'FSL, 2617'FEL, SEC.5									

Design Targets									
Target Name	Dip Angle (°)	Dip Dir. (°)	TVD (ft)	+N/-S (ft)	+E/-W (ft)	Northing (usft)	Easting (usft)	Latitude	Longitude
- hit/miss target									
- Shape									
SHL 1175'FSL, 551'FEL, - survey hits target center - Point	0.00	0.00	1.0	0.0	0.0	1,398,807.27	3,265,120.27	40.424220	-104.547719
BHL 2127'FSL, 2617'FEL - survey misses target center by 14.2ft at 14475.0ft MD (6732.6 TVD, 936.6 N, -7347.6 E) - Point	0.00	0.00	6,744.0	928.3	-7,349.0	1,399,656.53	3,257,762.07	40.426765	-104.574115

Survey Annotations				
Measured Depth (ft)	Vertical Depth (ft)	+N/-S (ft)	+E/-W (ft)	Comment
7,030.7	6,707.9	927.4	91.0	TPZ - 460' Setback - 2102'FSL & 460'FEL, SEC.4
8,985.0	6,760.4	925.2	-1,859.1	Deepest TVD Drilled - 6760.38' TVD

Company:	PDC Energy Inc. DJ Basin	Local Co-ordinate Reference:	Well McGlothlin Farms 4W-334
Project:	SEC.4-T5N-R64W	TVD Reference:	WELL @ 4639.0ft (Ensign Rig #161 - RKB - 23')
Site:	McGlothlin Farms 5N64W4DX Pad Sec.4-T5N-R64W	MD Reference:	WELL @ 4639.0ft (Ensign Rig #161 - RKB - 23')
Well:	McGlothlin Farms 4W-334	North Reference:	True
Wellbore:	McGlothlin Farms 4W-334 Wellbore #1	Survey Calculation Method:	Minimum Curvature
Design:	McGlothlin Farms 4W-334 Wellbore #1	Database:	US_EDM

Checked By: _____	Approved By: _____	Date: _____
-------------------	--------------------	-------------