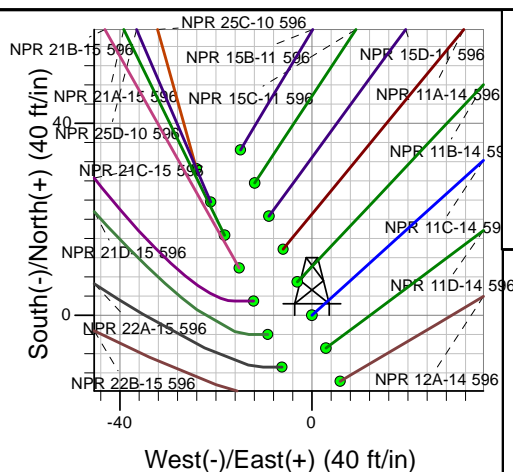
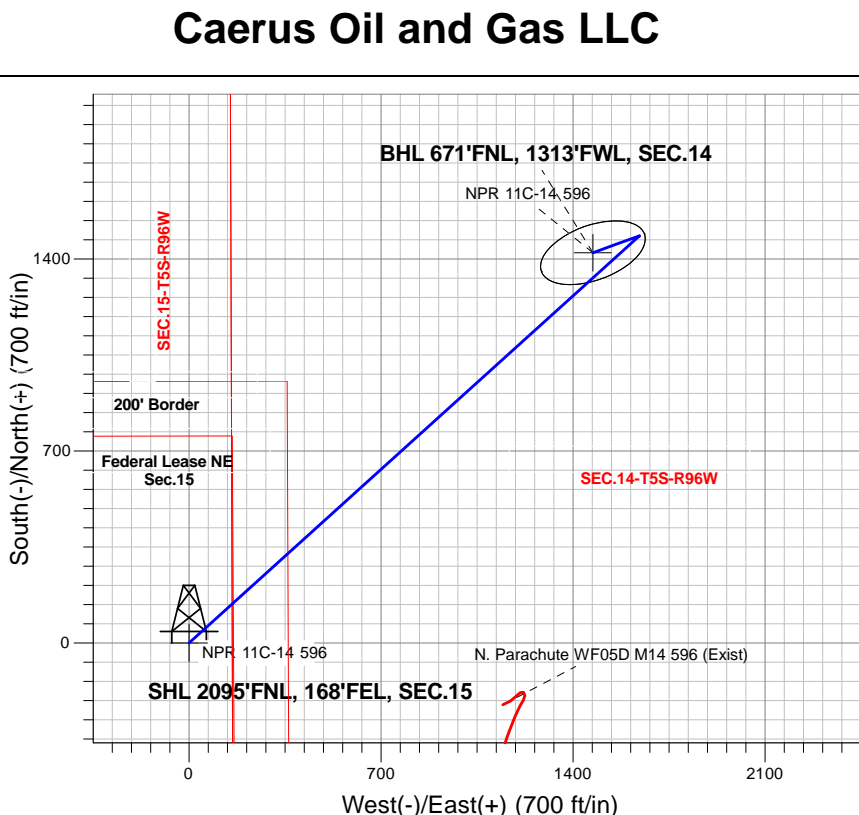
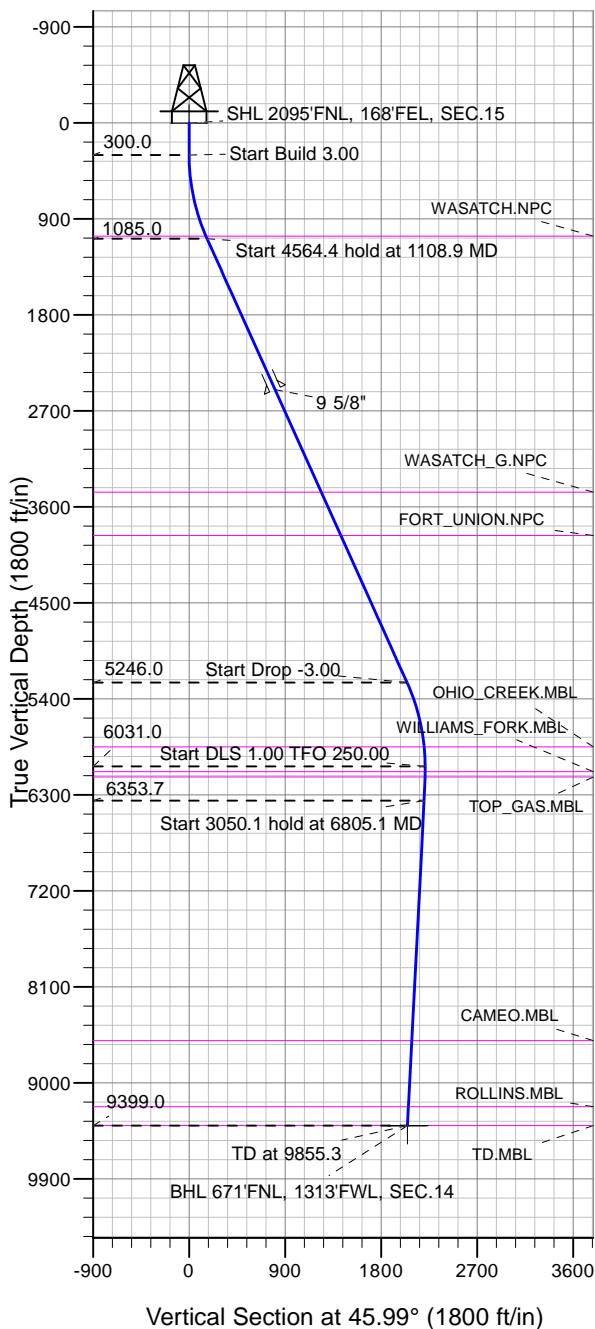


Well Name: **NPR 11C-14 596**  
 Surface Location: NPR H15 596 South Pad Sec.15-T5S-R96W  
 NAD 1927 - Western US , Universal Transverse Mercator (US Survey Feet)  
 Zone 12N (114 W to 108 W)  
 Ground Elevation: 6429.0  
 +N/-S+E/-W Northing Easting Latitude Longitude Slot  
 0.0 0.0 14399212.81 2444206.73 39.616605 -108.146039  
 Original Well Elev WELL @ 6453.0ft (Original Well Elev)



NPR 11C-14 596  
 Plan #1 (11-30-17)  
 10:23, December 18 2017



Azimuths to True North  
 Magnetic North: 9.63°  
 Magnetic Field  
 Strength: 51521.1snT  
 Dip Angle: 65.85°  
 Date: 12/18/2017  
 Model: HDGM

### DESIGN TARGET DETAILS

Name	TVD	+N/-S	+E/-W	Latitude	Longitude	Shape
SHL 2095'FNL, 168'FEL, SEC.15	1.0	0.0	0.0	39.616605	-108.146039	Point
BHL 671'FNL, 1313'FWL, SEC.14	9399.0	1422.3	1472.2	39.620510	-108.140813	Ellipse (Radii: L200.0 W100.0)

### SECTION DETAILS

Sec	MD	Inc	Azi	TVD	+N/-S	+E/-W	Dleg	TFace	Vsect	Target
1	0.0	0.00	0.00	0.0	0.0	0.0	0.00	0.00	0.0	
2	300.0	0.00	0.00	300.0	0.0	0.0	0.00	0.00	0.0	
3	1108.9	24.27	47.89	1085.0	113.2	125.2	3.00	47.89	168.7	
4	5673.4	24.27	47.89	5246.0	1371.0	1517.0	0.00	0.00	2043.6	
5	6482.3	0.00	0.00	6031.0	1484.2	1642.2	3.00	180.00	2212.3	
6	6805.1	3.23	250.00	6353.7	1481.1	1633.7	1.00	250.00	2204.0	
7	9855.3	3.23	250.00	9399.0	1422.3	1472.2	0.00	0.00	2047.1	BHL 671'FNL, 1313'FWL, SEC.14



## **Caerus Oil and Gas LLC**

**SEC.15-T5S-R96W**

**NPR H15 596 South Pad Sec.15-T5S-R96W**

**NPR 11C-14 596**

**Wellbore #1**

**Plan: Plan #1 (11-30-17)**

## **Standard Planning Report**

**18 December, 2017**

<b>Database:</b>	US_EDM	<b>Local Co-ordinate Reference:</b>	Well NPR 11C-14 596
<b>Company:</b>	Caerus Oil and Gas LLC	<b>TVD Reference:</b>	WELL @ 6453.0ft (Original Well Elev)
<b>Project:</b>	SEC.15-T5S-R96W	<b>MD Reference:</b>	WELL @ 6453.0ft (Original Well Elev)
<b>Site:</b>	NPR H15 596 South Pad Sec.15-T5S-R96W	<b>North Reference:</b>	True
<b>Well:</b>	NPR 11C-14 596	<b>Survey Calculation Method:</b>	Minimum Curvature
<b>Wellbore:</b>	Wellbore #1		
<b>Design:</b>	Plan #1 (11-30-17)		

<b>Project</b>	SEC.15-T5S-R96W, Garfield County, CO		
<b>Map System:</b>	Universal Transverse Mercator (US Survey Feet)	<b>System Datum:</b>	Mean Sea Level
<b>Geo Datum:</b>	NAD 1927 - Western US		Using Well Reference Point
<b>Map Zone:</b>	Zone 12N (114 W to 108 W)		Using geodetic scale factor

Site	NPR H15 596 South Pad Sec.15-T5S-R96W				
Site Position:		Northing:	14,399,246.79 usft	Latitude:	39.616700
From:	Lat/Long	Easting:	2,444,190.74 usft	Longitude:	-108.146093
Position Uncertainty:	0.0 ft	Slot Radius:	13-3/16 "	Grid Convergence:	1.82

Well	NPR 11C-14 596					
Well Position	+N/-S	-34.5 ft	Northing:	14,399,212.82 usft	Latitude:	39.616606
	+E/-W	14.9 ft	Easting:	2,444,206.74 usft	Longitude:	-108.146040
Position Uncertainty		0.0 ft	Wellhead Elevation:	0.0 ft	Ground Level:	6,429.0 ft

<b>Wellbore</b>	Wellbore #1				
<b>Magnetics</b>	<b>Model Name</b>	<b>Sample Date</b>	<b>Declination (°)</b>	<b>Dip Angle (°)</b>	<b>Field Strength (nT)</b>
	HDGM	12/18/2017	9.63	65.85	51,521

<b>Design</b>	Plan #1 (11-30-17)			
<b>Audit Notes:</b>				
<b>Version:</b>	<b>Phase:</b>	PROTOTYPE	<b>Tie On Depth:</b>	0.0
<b>Vertical Section:</b>	<b>Depth From (TVD)</b>	<b>+N/-S</b>	<b>+E/-W</b>	<b>Direction</b>
	(ft)	(ft)	(ft)	(°)
	0.0	0.0	0.0	45.99

<b>Plan Sections</b>										
Measured Depth (ft)	Inclination (°)	Azimuth (°)	Vertical Depth (ft)	+N/-S (ft)	+E/-W (ft)	Dogleg Rate (°/100usft)	Build Rate (°/100usft)	Turn Rate (°/100usft)	TFO (°)	Target
0.0	0.00	0.00	0.0	0.0	0.0	0.00	0.00	0.00	0.00	
300.0	0.00	0.00	300.0	0.0	0.0	0.00	0.00	0.00	0.00	
1,108.9	24.27	47.89	1,085.0	113.2	125.2	3.00	3.00	0.00	47.89	
5,673.4	24.27	47.89	5,246.0	1,371.0	1,517.0	0.00	0.00	0.00	0.00	
6,482.3	0.00	0.00	6,031.0	1,484.2	1,642.2	3.00	-3.00	0.00	180.00	
6,805.1	3.23	250.00	6,353.7	1,481.1	1,633.7	1.00	1.00	-34.07	250.00	
9,855.3	3.23	250.00	9,399.0	1,422.3	1,472.2	0.00	0.00	0.00	0.00	BHL 671'FNL, 1313'F'

Database:	US_EDM	Local Co-ordinate Reference:	Well NPR 11C-14 596
Company:	Caerus Oil and Gas LLC	TVD Reference:	WELL @ 6453.0ft (Original Well Elev)
Project:	SEC.15-T5S-R96W	MD Reference:	WELL @ 6453.0ft (Original Well Elev)
Site:	NPR H15 596 South Pad Sec.15-T5S-R96W	North Reference:	True
Well:	NPR 11C-14 596	Survey Calculation Method:	Minimum Curvature
Wellbore:	Wellbore #1		
Design:	Plan #1 (11-30-17)		

Planned Survey									
Measured Depth (ft)	Inclination (°)	Azimuth (°)	Vertical Depth (ft)	+N/-S (ft)	+E/-W (ft)	Vertical Section (ft)	Dogleg Rate (°/100usft)	Build Rate (°/100usft)	Turn Rate (°/100usft)
0.0	0.00	0.00	0.0	0.0	0.0	0.0	0.00	0.00	0.00
1.0	0.00	0.00	1.0	0.0	0.0	0.0	0.00	0.00	0.00
SHL 2095'FNL, 168'FEL, SEC.15									
100.0	0.00	0.00	100.0	0.0	0.0	0.0	0.00	0.00	0.00
200.0	0.00	0.00	200.0	0.0	0.0	0.0	0.00	0.00	0.00
300.0	0.00	0.00	300.0	0.0	0.0	0.0	0.00	0.00	0.00
400.0	3.00	47.89	400.0	1.8	1.9	2.6	3.00	3.00	0.00
500.0	6.00	47.89	499.6	7.0	7.8	10.5	3.00	3.00	0.00
600.0	9.00	47.89	598.8	15.8	17.4	23.5	3.00	3.00	0.00
700.0	12.00	47.89	697.1	28.0	31.0	41.7	3.00	3.00	0.00
800.0	15.00	47.89	794.3	43.6	48.3	65.0	3.00	3.00	0.00
900.0	18.00	47.89	890.2	62.7	69.3	93.4	3.00	3.00	0.00
1,000.0	21.00	47.89	984.4	85.1	94.1	126.8	3.00	3.00	0.00
1,082.7	23.48	47.89	1,061.0	106.0	117.3	158.1	3.00	3.00	0.00
WASATCH.NPC									
1,100.0	24.00	47.89	1,076.8	110.7	122.5	165.0	3.00	3.00	0.00
1,108.9	24.27	47.89	1,085.0	113.2	125.2	168.7	3.00	3.00	0.00
1,200.0	24.27	47.89	1,168.0	138.3	153.0	206.1	0.00	0.00	0.00
1,300.0	24.27	47.89	1,259.1	165.8	183.5	247.2	0.00	0.00	0.00
1,400.0	24.27	47.89	1,350.3	193.4	214.0	288.2	0.00	0.00	0.00
1,500.0	24.27	47.89	1,441.5	220.9	244.5	329.3	0.00	0.00	0.00
1,600.0	24.27	47.89	1,532.6	248.5	274.9	370.4	0.00	0.00	0.00
1,700.0	24.27	47.89	1,623.8	276.0	305.4	411.5	0.00	0.00	0.00
1,800.0	24.27	47.89	1,715.0	303.6	335.9	452.5	0.00	0.00	0.00
1,900.0	24.27	47.89	1,806.1	331.2	366.4	493.6	0.00	0.00	0.00
2,000.0	24.27	47.89	1,897.3	358.7	396.9	534.7	0.00	0.00	0.00
2,100.0	24.27	47.89	1,988.5	386.3	427.4	575.8	0.00	0.00	0.00
2,200.0	24.27	47.89	2,079.6	413.8	457.9	616.9	0.00	0.00	0.00
2,300.0	24.27	47.89	2,170.8	441.4	488.4	657.9	0.00	0.00	0.00
2,400.0	24.27	47.89	2,261.9	468.9	518.9	699.0	0.00	0.00	0.00
2,500.0	24.27	47.89	2,353.1	496.5	549.4	740.1	0.00	0.00	0.00
2,600.0	24.27	47.89	2,444.3	524.1	579.9	781.2	0.00	0.00	0.00
2,661.1	24.27	47.89	2,500.0	540.9	598.5	806.3	0.00	0.00	0.00
9 5/8"									
2,700.0	24.27	47.89	2,535.4	551.6	610.4	822.2	0.00	0.00	0.00
2,800.0	24.27	47.89	2,626.6	579.2	640.9	863.3	0.00	0.00	0.00
2,900.0	24.27	47.89	2,717.8	606.7	671.3	904.4	0.00	0.00	0.00
3,000.0	24.27	47.89	2,808.9	634.3	701.8	945.5	0.00	0.00	0.00
3,100.0	24.27	47.89	2,900.1	661.9	732.3	986.5	0.00	0.00	0.00
3,200.0	24.27	47.89	2,991.3	689.4	762.8	1,027.6	0.00	0.00	0.00
3,300.0	24.27	47.89	3,082.4	717.0	793.3	1,068.7	0.00	0.00	0.00
3,400.0	24.27	47.89	3,173.6	744.5	823.8	1,109.8	0.00	0.00	0.00
3,500.0	24.27	47.89	3,264.7	772.1	854.3	1,150.9	0.00	0.00	0.00
3,600.0	24.27	47.89	3,355.9	799.6	884.8	1,191.9	0.00	0.00	0.00
3,700.0	24.27	47.89	3,447.1	827.2	915.3	1,233.0	0.00	0.00	0.00
3,715.3	24.27	47.89	3,461.0	831.4	919.9	1,239.3	0.00	0.00	0.00
WASATCH_G.NPC									
3,800.0	24.27	47.89	3,538.2	854.8	945.8	1,274.1	0.00	0.00	0.00
3,900.0	24.27	47.89	3,629.4	882.3	976.3	1,315.2	0.00	0.00	0.00
4,000.0	24.27	47.89	3,720.6	909.9	1,006.8	1,356.2	0.00	0.00	0.00
4,100.0	24.27	47.89	3,811.7	937.4	1,037.2	1,397.3	0.00	0.00	0.00
4,160.6	24.27	47.89	3,867.0	954.1	1,055.7	1,422.2	0.00	0.00	0.00
FORT_UNION.NPC									
4,200.0	24.27	47.89	3,902.9	965.0	1,067.7	1,438.4	0.00	0.00	0.00

<b>Database:</b>	US_EDM	<b>Local Co-ordinate Reference:</b>	Well NPR 11C-14 596
<b>Company:</b>	Caerus Oil and Gas LLC	<b>TVD Reference:</b>	WELL @ 6453.0ft (Original Well Elev)
<b>Project:</b>	SEC.15-T5S-R96W	<b>MD Reference:</b>	WELL @ 6453.0ft (Original Well Elev)
<b>Site:</b>	NPR H15 596 South Pad Sec.15-T5S-R96W	<b>North Reference:</b>	True
<b>Well:</b>	NPR 11C-14 596	<b>Survey Calculation Method:</b>	Minimum Curvature
<b>Wellbore:</b>	Wellbore #1		
<b>Design:</b>	Plan #1 (11-30-17)		

Planned Survey									
Measured Depth (ft)	Inclination (°)	Azimuth (°)	Vertical Depth (ft)	+N/-S (ft)	+E/-W (ft)	Vertical Section (ft)	Dogleg Rate (°/100usft)	Build Rate (°/100usft)	Turn Rate (°/100usft)
4,300.0	24.27	47.89	3,994.1	992.5	1,098.2	1,479.5	0.00	0.00	0.00
4,400.0	24.27	47.89	4,085.2	1,020.1	1,128.7	1,520.5	0.00	0.00	0.00
4,500.0	24.27	47.89	4,176.4	1,047.7	1,159.2	1,561.6	0.00	0.00	0.00
4,600.0	24.27	47.89	4,267.5	1,075.2	1,189.7	1,602.7	0.00	0.00	0.00
4,700.0	24.27	47.89	4,358.7	1,102.8	1,220.2	1,643.8	0.00	0.00	0.00
4,800.0	24.27	47.89	4,449.9	1,130.3	1,250.7	1,684.9	0.00	0.00	0.00
4,900.0	24.27	47.89	4,541.0	1,157.9	1,281.2	1,725.9	0.00	0.00	0.00
5,000.0	24.27	47.89	4,632.2	1,185.5	1,311.7	1,767.0	0.00	0.00	0.00
5,100.0	24.27	47.89	4,723.4	1,213.0	1,342.2	1,808.1	0.00	0.00	0.00
5,200.0	24.27	47.89	4,814.5	1,240.6	1,372.7	1,849.2	0.00	0.00	0.00
5,300.0	24.27	47.89	4,905.7	1,268.1	1,403.2	1,890.2	0.00	0.00	0.00
5,400.0	24.27	47.89	4,996.9	1,295.7	1,433.6	1,931.3	0.00	0.00	0.00
5,500.0	24.27	47.89	5,088.0	1,323.2	1,464.1	1,972.4	0.00	0.00	0.00
5,600.0	24.27	47.89	5,179.2	1,350.8	1,494.6	2,013.5	0.00	0.00	0.00
5,673.4	24.27	47.89	5,246.0	1,371.0	1,517.0	2,043.6	0.00	0.00	0.00
5,700.0	23.47	47.89	5,270.4	1,378.2	1,525.0	2,054.4	3.00	-3.00	0.00
5,800.0	20.47	47.89	5,363.1	1,403.3	1,552.7	2,091.8	3.00	-3.00	0.00
5,900.0	17.47	47.89	5,457.7	1,425.1	1,576.9	2,124.2	3.00	-3.00	0.00
6,000.0	14.47	47.89	5,553.8	1,443.6	1,597.3	2,151.7	3.00	-3.00	0.00
6,100.0	11.47	47.89	5,651.3	1,458.6	1,613.9	2,174.2	3.00	-3.00	0.00
6,200.0	8.47	47.89	5,749.8	1,470.2	1,626.8	2,191.5	3.00	-3.00	0.00
6,300.0	5.47	47.89	5,849.0	1,478.3	1,635.8	2,203.6	3.00	-3.00	0.00
OHIO_CREEK.MBL									
6,400.0	2.47	47.89	5,948.8	1,483.0	1,640.9	2,210.5	3.00	-3.00	0.00
6,482.3	0.00	0.00	6,031.0	1,484.2	1,642.2	2,212.3	3.00	-3.00	0.00
6,500.0	0.18	250.00	6,048.7	1,484.2	1,642.2	2,212.3	1.00	1.00	0.00
6,532.3	0.50	250.00	6,081.0	1,484.1	1,642.0	2,212.1	1.00	1.00	0.00
WILLIAMS_FORK.MBL									
6,582.3	1.00	250.00	6,131.0	1,483.9	1,641.4	2,211.5	1.00	1.00	0.00
TOP_GAS.MBL									
6,600.0	1.18	250.00	6,148.7	1,483.8	1,641.1	2,211.2	1.00	1.00	0.00
6,700.0	2.18	250.00	6,248.7	1,482.8	1,638.3	2,208.5	1.00	1.00	0.00
6,800.0	3.18	250.00	6,348.6	1,481.2	1,633.9	2,204.2	1.00	1.00	0.00
6,805.1	3.23	250.00	6,353.7	1,481.1	1,633.7	2,204.0	1.00	1.00	0.00
6,900.0	3.23	250.00	6,448.4	1,479.2	1,628.6	2,199.1	0.00	0.00	0.00
7,000.0	3.23	250.00	6,548.2	1,477.3	1,623.3	2,193.9	0.00	0.00	0.00
7,100.0	3.23	250.00	6,648.1	1,475.4	1,618.0	2,188.8	0.00	0.00	0.00
7,200.0	3.23	250.00	6,747.9	1,473.5	1,612.8	2,183.7	0.00	0.00	0.00
7,300.0	3.23	250.00	6,847.8	1,471.5	1,607.5	2,178.5	0.00	0.00	0.00
7,400.0	3.23	250.00	6,947.6	1,469.6	1,602.2	2,173.4	0.00	0.00	0.00
7,500.0	3.23	250.00	7,047.5	1,467.7	1,596.9	2,168.2	0.00	0.00	0.00
7,600.0	3.23	250.00	7,147.3	1,465.8	1,591.6	2,163.1	0.00	0.00	0.00
7,700.0	3.23	250.00	7,247.1	1,463.8	1,586.3	2,157.9	0.00	0.00	0.00
7,800.0	3.23	250.00	7,347.0	1,461.9	1,581.0	2,152.8	0.00	0.00	0.00
7,900.0	3.23	250.00	7,446.8	1,460.0	1,575.7	2,147.6	0.00	0.00	0.00
8,000.0	3.23	250.00	7,546.7	1,458.0	1,570.4	2,142.5	0.00	0.00	0.00
8,100.0	3.23	250.00	7,646.5	1,456.1	1,565.1	2,137.4	0.00	0.00	0.00
8,200.0	3.23	250.00	7,746.3	1,454.2	1,559.8	2,132.2	0.00	0.00	0.00
8,300.0	3.23	250.00	7,846.2	1,452.3	1,554.5	2,127.1	0.00	0.00	0.00
8,400.0	3.23	250.00	7,946.0	1,450.3	1,549.2	2,121.9	0.00	0.00	0.00
8,500.0	3.23	250.00	8,045.9	1,448.4	1,544.0	2,116.8	0.00	0.00	0.00
8,600.0	3.23	250.00	8,145.7	1,446.5	1,538.7	2,111.6	0.00	0.00	0.00
8,700.0	3.23	250.00	8,245.6	1,444.6	1,533.4	2,106.5	0.00	0.00	0.00

<b>Database:</b>	US_EDM	<b>Local Co-ordinate Reference:</b>	Well NPR 11C-14 596
<b>Company:</b>	Caerus Oil and Gas LLC	<b>TVD Reference:</b>	WELL @ 6453.0ft (Original Well Elev)
<b>Project:</b>	SEC.15-T5S-R96W	<b>MD Reference:</b>	WELL @ 6453.0ft (Original Well Elev)
<b>Site:</b>	NPR H15 596 South Pad Sec.15-T5S-R96W	<b>North Reference:</b>	True
<b>Well:</b>	NPR 11C-14 596	<b>Survey Calculation Method:</b>	Minimum Curvature
<b>Wellbore:</b>	Wellbore #1		
<b>Design:</b>	Plan #1 (11-30-17)		

### Planned Survey

Measured Depth (ft)	Inclination (°)	Azimuth (°)	Vertical Depth (ft)	+N/-S (ft)	+E/-W (ft)	Vertical Section (ft)	Dogleg Rate (°/100usft)	Build Rate (°/100usft)	Turn Rate (°/100usft)
8,800.0	3.23	250.00	8,345.4	1,442.6	1,528.1	2,101.3	0.00	0.00	0.00
8,900.0	3.23	250.00	8,445.2	1,440.7	1,522.8	2,096.2	0.00	0.00	0.00
9,000.0	3.23	250.00	8,545.1	1,438.8	1,517.5	2,091.1	0.00	0.00	0.00
9,058.0	3.23	250.00	8,603.0	1,437.7	1,514.4	2,088.1	0.00	0.00	0.00
CAMEO.MBL									
9,100.0	3.23	250.00	8,644.9	1,436.9	1,512.2	2,085.9	0.00	0.00	0.00
9,200.0	3.23	250.00	8,744.8	1,434.9	1,506.9	2,080.8	0.00	0.00	0.00
9,300.0	3.23	250.00	8,844.6	1,433.0	1,501.6	2,075.6	0.00	0.00	0.00
9,400.0	3.23	250.00	8,944.4	1,431.1	1,496.3	2,070.5	0.00	0.00	0.00
9,500.0	3.23	250.00	9,044.3	1,429.2	1,491.0	2,065.3	0.00	0.00	0.00
9,600.0	3.23	250.00	9,144.1	1,427.2	1,485.7	2,060.2	0.00	0.00	0.00
9,679.0	3.23	250.00	9,223.0	1,425.7	1,481.6	2,056.1	0.00	0.00	0.00
ROLLINS.MBL									
9,700.0	3.23	250.00	9,244.0	1,425.3	1,480.4	2,055.0	0.00	0.00	0.00
9,800.0	3.23	250.00	9,343.8	1,423.4	1,475.1	2,049.9	0.00	0.00	0.00
9,855.3	3.23	250.00	9,399.0	1,422.3	1,472.2	2,047.1	0.00	0.00	0.00
TD.MBL - BHL 671'FNL, 1313'FWL, SEC.14									

## Design Targets

Target Name	Dip Angle	Dip Dir.	TVD	+N/-S	+E/-W	Northing	Easting	Latitude	Longitude
- hit/miss target - Shape	(°)	(°)	(ft)	(ft)	(ft)	(usft)	(usft)		
SHL 2095'FNL, 168'FEL - plan hits target center - Point	0.00	0.00	1.0	0.0	0.0	14,399,212.82	2,444,206.74	39.616606	-108.146040
BHL 671'FNL, 1313'FWL - plan hits target center - Ellipse (radii L200.0 W100.0 on 250.00 azi)	0.00	0.00	9,399.0	1,422.3	1,472.2	14,400,681.69	2,445,633.50	39.620510	-108.140814

### Casing Points

Measured Depth (ft)	Vertical Depth (ft)	Name	Casing Diameter (")	Hole Diameter (")
2,661.1	2,500.0	9 5/8"	9-5/8	12-1/4

<b>Database:</b>	US_EDM	<b>Local Co-ordinate Reference:</b>	Well NPR 11C-14 596
<b>Company:</b>	Caerus Oil and Gas LLC	<b>TVD Reference:</b>	WELL @ 6453.0ft (Original Well Elev)
<b>Project:</b>	SEC.15-T5S-R96W	<b>MD Reference:</b>	WELL @ 6453.0ft (Original Well Elev)
<b>Site:</b>	NPR H15 596 South Pad Sec.15-T5S-R96W	<b>North Reference:</b>	True
<b>Well:</b>	NPR 11C-14 596	<b>Survey Calculation Method:</b>	Minimum Curvature
<b>Wellbore:</b>	Wellbore #1		
<b>Design:</b>	Plan #1 (11-30-17)		

Formations						
Measured Depth (ft)	Vertical Depth (ft)	Name	Lithology	Dip (°)	Dip Direction (°)	
1,082.7	1,061.0	WASATCH.NPC		0.00		
3,715.3	3,461.0	WASATCH_G.NPC		0.00		
4,160.6	3,867.0	FORT_UNION.NPC		0.00		
6,300.0	5,849.0	OHIO_CREEK.MBL		0.00		
6,532.3	6,081.0	WILLIAMS_FORK.MBL		0.00		
6,582.3	6,131.0	TOP_GAS.MBL		0.00		
9,058.0	8,603.0	CAMEO.MBL		0.00		
9,679.0	9,223.0	ROLLINS.MBL		0.00		
9,855.3	9,399.0	TD.MBL		0.00		