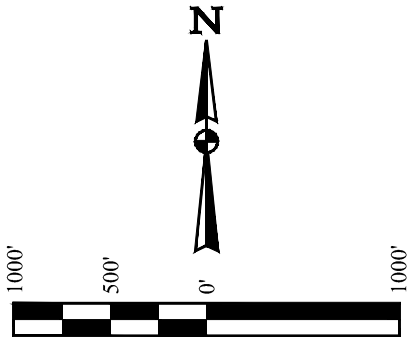


T8N, R59W, 6th P.M.

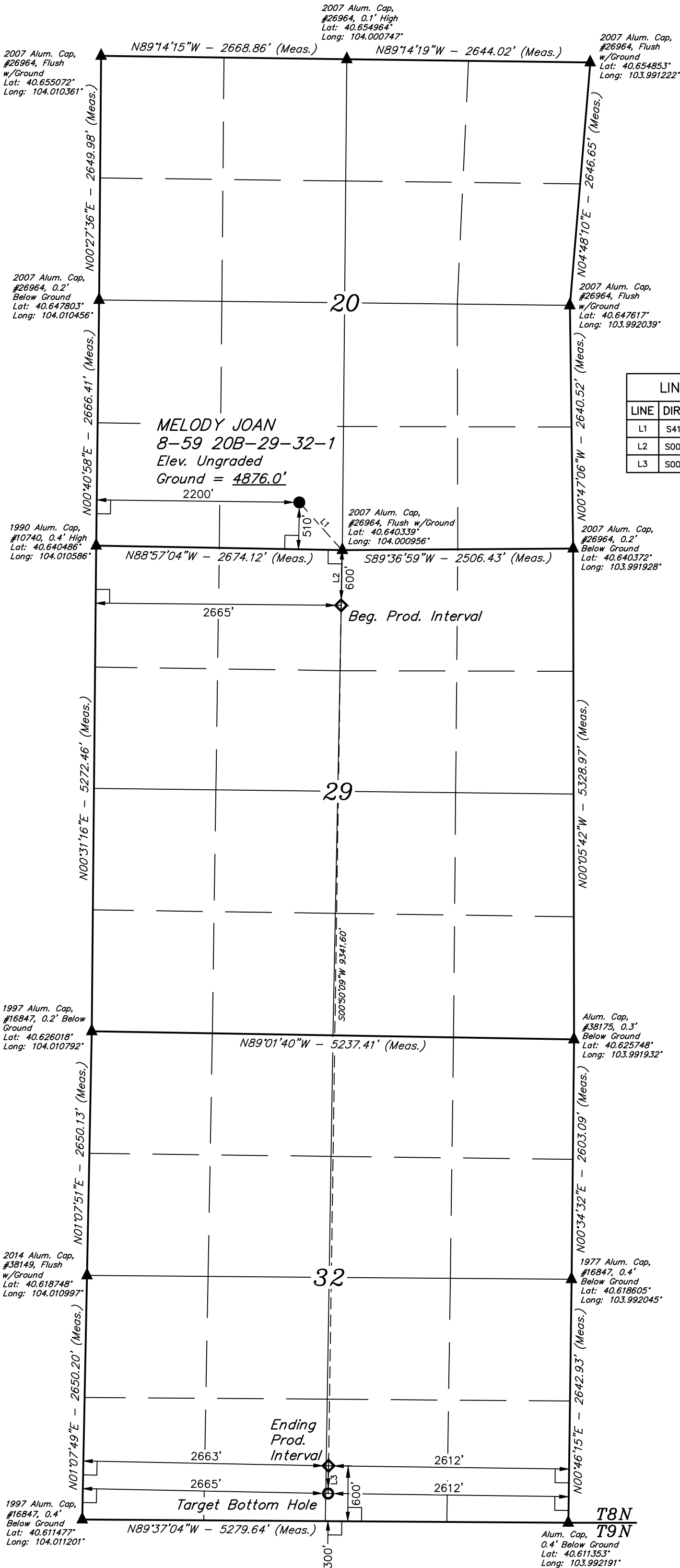
- LEGEND:
- 90° SYMBOL
 - PROPOSED WELLHEAD.
 - PRODUCTION INTERVAL.
 - TARGET BOTTOM HOLE.
 - SECTION CORNERS LOCATED. (NAD 83)



BASIS OF BEARINGS
BASIS OF BEARINGS IS A G.P.S. OBSERVATION

BASIS OF ELEVATION
SPOT ELEVATION LOCATED AT THE NORTHEAST CORNER OF SECTION 2, T9N, R61W, 6th P.M., TAKEN FROM THE GROVER SOUTH, QUADRANGLE, COLORADO, WELD COUNTY, 7.5 MINUTE QUAD (TOPOGRAPHICAL MAP) PUBLISHED BY THE UNITED STATES DEPARTMENT OF THE INTERIOR, GEOLOGICAL SURVEY. SAID ELEVATION IS MARKED AS BEING 5043 FEET.

LINE TABLE		
LINE	DIRECTION	LENGTH
L1	S41°42'00"E	694.45'
L2	S00°50'09"W	600.00'
L3	S00°50'09"W	300.01'



PDOP = 1.5

SURFACE LOCATION 510' FSL 2200' FWL	
NAD 83 (SURFACE LOCATION)	
LATITUDE = 40°38'30.35" (40.641764)	
LONGITUDE = 104°00'09.49" (104.002636)	
NAD 27 (SURFACE LOCATION)	
LATITUDE = 40°38'30.39" (40.641776)	
LONGITUDE = 104°00'07.67" (104.002131)	
STATE PLANE NAD 83 (CO. NORTH)	
N: 1480145.10 E: 3415524.31	
STATE PLANE NAD 27 (CO. NORTH)	
N: 480143.65 E: 2415675.48	
BEG. PROD. INTERVAL 600' FSL 2665' FWL	
NAD 83 (BEG. PROD. INTERVAL)	
LATITUDE = 40°38'19.29" (40.638692)	
LONGITUDE = 104°00'03.64" (104.001011)	
NAD 27 (BEG. PROD. INTERVAL)	
LATITUDE = 40°38'19.34" (40.638705)	
LONGITUDE = 104°00'01.82" (104.000506)	
STATE PLANE NAD 83 (CO. NORTH)	
N: 1479033.90 E: 3415994.19	
STATE PLANE NAD 27 (CO. NORTH)	
N: 479032.46 E: 2416145.40	
ENDING PROD. INTERVAL 600' FSL 2663' FWL 2612' FEL	
NAD 83 (ENDING PROD. INTERVAL)	
LATITUDE = 40°36'47.02" (40.613061)	
LONGITUDE = 104°00'05.63" (104.001564)	
NAD 27 (ENDING PROD. INTERVAL)	
LATITUDE = 40°36'47.06" (40.613074)	
LONGITUDE = 104°00'03.81" (104.001058)	
STATE PLANE NAD 83 (CO. NORTH)	
N: 1469694.75 E: 3415998.59	
STATE PLANE NAD 27 (CO. NORTH)	
N: 469693.48 E: 2416149.94	
TARGET BOTTOM HOLE 300' FSL 2665' FWL 2612' FEL	
NAD 83 (TARGET BOTTOM HOLE)	
LATITUDE = 40°36'44.06" (40.612238)	
LONGITUDE = 104°00'05.69" (104.001582)	
NAD 27 (TARGET BOTTOM HOLE)	
LATITUDE = 40°36'44.10" (40.612250)	
LONGITUDE = 104°00'03.87" (104.001076)	
STATE PLANE NAD 83 (CO. NORTH)	
N: 1469394.82 E: 3415998.73	
STATE PLANE NAD 27 (CO. NORTH)	
N: 469393.55 E: 2416150.08	

CERTIFICATE
THIS IS TO CERTIFY THAT THE ABOVE IS A TRUE AND CORRECT COPY OF THE ORIGINAL FIELD NOTES OF ACTUAL SURVEYS MADE BY ME OR UNDER MY SUPERVISION, AND THAT THE SAME ARE TRUE AND CORRECT TO THE BEST OF MY KNOWLEDGE AND BELIEF.

REGISTERED LAND SURVEYOR
REGISTRATION NO. 28285
STATE OF COLORADO

BISON OIL & GAS II

MELODY JOAN 8-59 20B-29-32-1
SE 1/4 SW 1/4, SECTION 20, T8N, R59W, 6th P.M.
WELD COUNTY, COLORADO



UELS, LLC
Corporate Office * 85 South 200 East
Vernal, UT 84078 * (435) 789-1017

SURVEYED BY	JAMES FRESHWATER, G.B.	10-31-17	SCALE
DRAWN BY	J.J.	11-10-17	1" = 1000'

WELL LOCATION PLAT