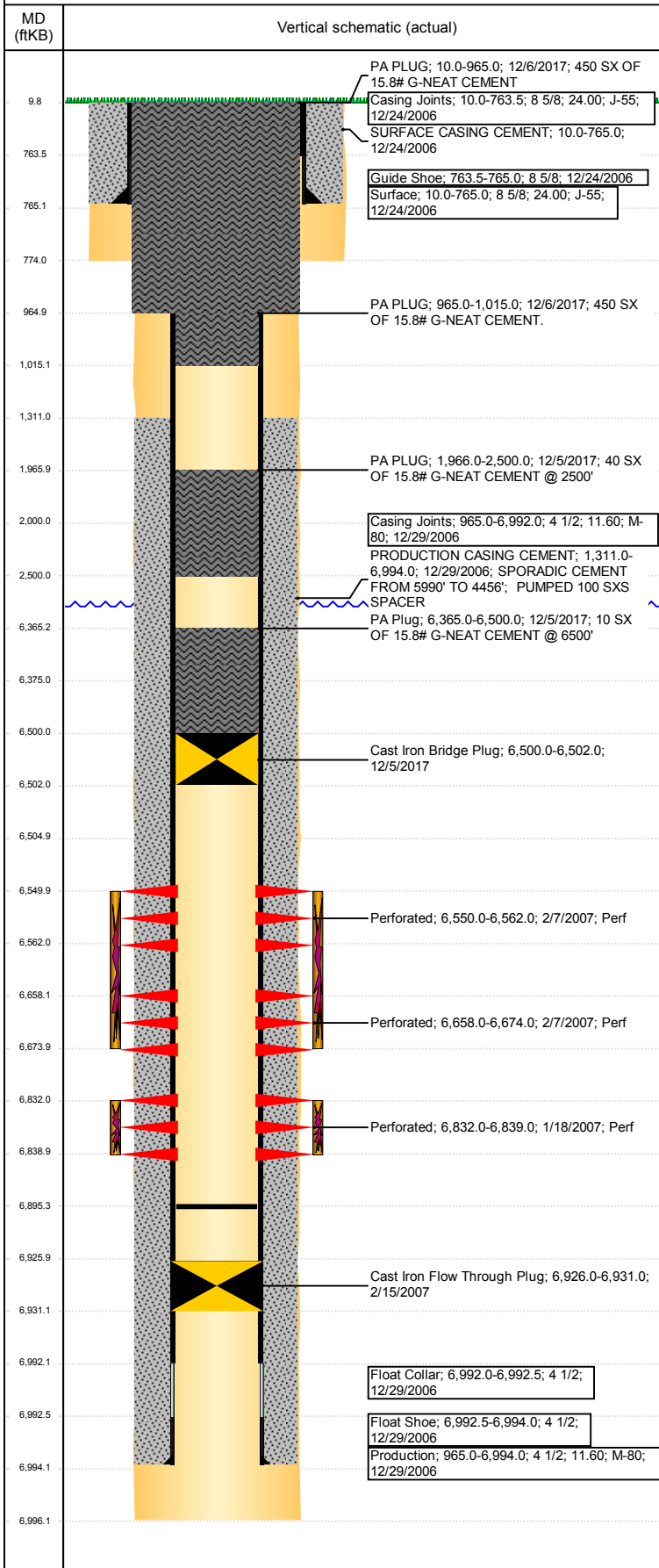


Well Name: FOSS USX AA05-19

VERTICAL - ORIGINAL HOLE, 12/30/2017 11:35:28 AM



Well Header

API 05-123-24561	Business Unit DJ BASIN	District 15	Well Config VERTICAL
Original KB Elevation (ft) 4,724	KB - GL / MSL (ftKB) 10.00	Spud Date 12/23/2006	P & A Date 12/6/2017

Comment

TD DISCREPANCY: DRL RPT=6996', ST CMP RPT=7196'

Directions To Well

74 & 63, S 1/4, E 1/4 TO CENTER PIVOT INTO

Congressional Location

Quarter 3 NW	Quarter 4 NW	Section 5	Township 6	Twnshp N/S Dir N	Range 63	Range E/W Dir W
-----------------	-----------------	--------------	---------------	---------------------	-------------	--------------------

Bottom Hole Location

North-South Distance (ft)	From N or S Line	East-West Distance (ft)	From E or W Line
---------------------------	------------------	-------------------------	------------------

Plug Back Total Depths

Date	Depth (ftKB)	Method	Com
12/29/2006	6,979.0	CASING TALLY	FLOAT SHOE W/ BAFFLE
1/16/2007	6,952.0	CASED HOLE LOG	DEPTH LOGGER ON CBL
2/15/2007	6,926.0	TAG	CHASE PLUG TO 6926'
6/18/2014	6,895.2	BOT	224 JTS W/ NO TAG

Wellbore Sections

Section Des	Size (in)	Act Top, MD (ftKB)	Act Btm, MD (ftKB)
SURFACE	12 1/4	10	774
PRODUCTION	7 7/8	774	6,996

Zone Statuses

Zone Name	Status Date	Status	Fluid Type	Job	Prod Method
CODELL	3/13/2007	PR	Water	DRILLING/CO...	Flowing
CODELL	10/15/2010	PR		ABANDON WE...	
CODELL	12/6/2017	P&A		DRILLING/CO...	
NIOBRARA	3/13/2007	PR	Water	DRILLING/CO...	Flowing
NIOBRARA	10/15/2010	PR		ABANDON WE...	
NIOBRARA	3/21/2017	TA		ABANDON WE...	
NIOBRARA	12/6/2017	P&A		ABANDON WE...	

Casing Strings

Surface, 765.0ftKB

Casing Description	Run Date	OD (in)	Wt/Len (lb/ft)	Grade	Top, MD (ftKB)	MD (ftKB)
Surface	12/24/2006	8 5/8	24.00	J-55	10.0	765.0

Production, 6,994.0ftKB

Casing Description	Run Date	OD (in)	Wt/Len (lb/ft)	Grade	Top, MD (ftKB)	MD (ftKB)
Production	12/29/2006	4 1/2	11.60	M-80	10.0	6,994.0

Cement

Description	Top Depth (ftKB)	Bottom Depth (ftKB)
SURFACE CASING CEMENT	10.0	765.0
PRODUCTION CASING CEMENT	1,311.0	6,994.0
Balance Plug	965.0	1,015.0
Balance Plug	2,000.0	2,500.0
Balance Plug	10.0	965.0
Cement Plug	6,375.0	6,500.0
PA PLUG	1,966.0	2,500.0
PA Plug	6,365.0	6,500.0
PA PLUG	965.0	1,015.0
PA PLUG	10.0	965.0

Tubing Strings

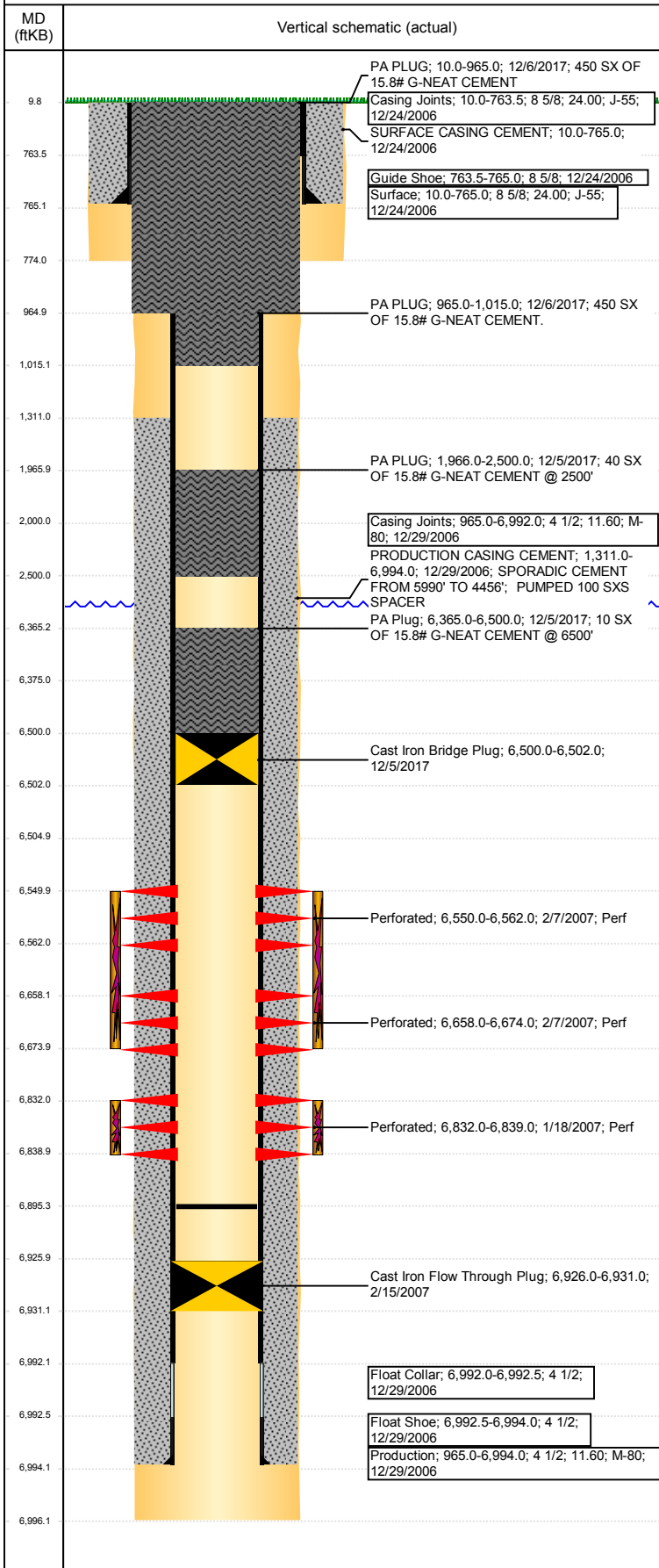
Tubing Description	Run Date	String...	ID (in)	Wt (lb/ft)	Grade	Len (ft)	Set De...
Tubing	2/16/2007	2 3/8	2.00	4.70	J-55	6,793.00	

Tubing Components

Item Des	OD (in)	Wt (lb/ft)	Grade	Jts	Len (ft)	Btm (ftKB)	Btm (TVD) (ftKB)
Tubing	2 3/8	4.70	J-55	221	6,791.50	6,801.5	
Seating Nipple	2 3/8	1.10			1.00	6,802.5	

Well Name: FOSS USX AA05-19

VERTICAL - ORIGINAL HOLE, 12/30/2017 11:35:28 AM



Tubing Components							
Item Des	OD (in)	Wt (lb/ft)	Grade	Jts	Len (ft)	Btm (ftKB)	Btm (TVD) (ftKB)
Notched collar	2 3/8				0.50	6,803.0	
Tubing Description	Run Date		String...	ID (in)	Wt (lb/ft)	Grade	Len (ft)
Tubing - Production	6/19/2014		2 3/8	2.00	4.70	J-55	6,460.65

Tubing Components							
Item Des	OD (in)	Wt (lb/ft)	Grade	Jts	Len (ft)	Btm (ftKB)	Btm (TVD) (ftKB)
EUE 8rd Tubing	2 3/8	4.70	J-55	210	6,459.55	6,469.6	
Pump Seating Nipple	2 3/8	1.10		1	1.10	6,470.7	
Tubing Description	Run Date		String...	ID (in)	Wt (lb/ft)	Grade	Len (ft)
Tubing - Production	1/8/2015		2 3/8	2.00	4.70	J-55	6,807.61

Tubing Components							
Item Des	OD (in)	Wt (lb/ft)	Grade	Jts	Len (ft)	Btm (ftKB)	Btm (TVD) (ftKB)
Pup Joint	2 3/8	4.70	N-80	1	10.10	19.1	
Pup Joint	2 3/8	4.70	N-80	1	10.10	29.2	
Pup Joint	2 3/8	4.70	N-80	1	4.15	33.3	
EUE 8rd Tubing	2 3/8	4.70	J-55	221	6,781.76	6,815.1	
Pump Seating Nipple	2 3/8			1	1.10	6,816.2	
Notched Collar	2 3/8		J-55	1	0.40	6,816.6	

Other In Hole				
Run Date	Des	OD (in)	Top (ftKB)	Btm (ftKB)
2/15/2007	Cast Iron Flow Through Plug	4 1/2	6,926.0	6,931.0
8/17/2017	Cast Iron Bridge Plug	3.99	6,500.0	6,505.0
12/5/2017	Cast Iron Bridge Plug	3.99	6,500.0	6,502.0

Logs			
Date	Type	Top, MD (ftKB)	Btm, MD (ftKB)
12/29/2006	COMPENSATED DENSITY	2,700.0	7,003.0
12/29/2006	INDUCTION	755.0	7,023.0
1/16/2007	CBL/CCL/GR	1,168.0	6,950.0
10/24/2013	GYRO	10.0	6,750.0

Perforation Data					
Linked Zone	Bnch/St g	Sum of Entered Shot Total	Top (ftKB)	Btm (ftKB)	Date
NIOBRARA, ORIGINAL HOLE	A	72	6,550.00	6,562.00	2/7/2007
NIOBRARA, ORIGINAL HOLE	B	96	6,658.00	6,674.00	2/7/2007
CODELL, ORIGINAL HOLE		28	6,832.00	6,839.00	1/18/2007
Total (Sum)		196			

Stimulation Intervals		
Start Date	Primary Job Type	
2/7/2007	DRILLING/COMPLETION - ORIGINAL	
Technical Result	Tech Result Details	Tech Result Note
Comment		
Start Date	Primary Job Type	
2/7/2007	DRILLING/COMPLETION - ORIGINAL	
Technical Result	Tech Result Details	Tech Result Note
Comment		