

SRC ENERGY

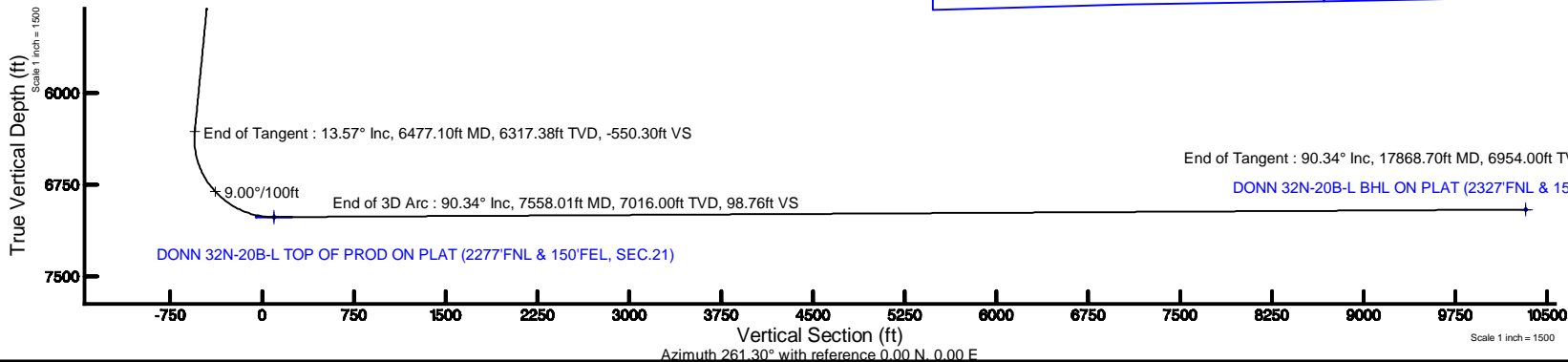
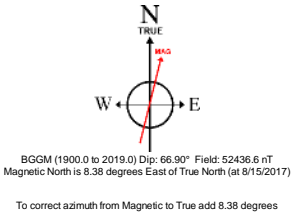
Location:	COLORADO	Slot:	SLOT#24 DONN 32N-20B-L (958°FNL & 252°FEL, SEC.21)
Field:	WELD COUNTY (NAD83, TRUE NORTH)	Well:	DONN 32N-20B-L
Facility:	SEC.21-T06N-R66W	Wellbore:	DONN 32N-20B-L PWB
Plot reference well/path is DONN 32N-20B-L PWP (REV-A.0)		Grid System: NAD83 / Lambert Colorado SP, Northern Zone (501), US feet	
True vertical depths are referenced to PRECISION DRILLING (25) (RKB)		North Reference: True north	
Measured depths are referenced to PRECISION DRILLING (25) (RKB)		Scale: True distance	
PRECISION DRILLING (25) (RKB) to Mean Sea Level: 4776 feet		Depths are in feet	
Mean Sea Level to Mud line (At Slot: SLOT#24 DONN 32N-20B-L (958°FNL & 252°FEL, SEC.21)): 0 feet		Created by: doddanna on 2017-08-22	
Coordinates are in feet referenced to Slot		Database: Denver DB	

Location Information

Facility Name				Grid East (US ft)	Grid North (US ft)	Latitude	Longitude
SEC.21-T06N-R66W				3201871.604	1417148.268	40°28'34.342"N	104°46'27.660"W
Slot	Local N (ft)	Local E (ft)	Grid East (US ft)	Grid North (US ft)	Latitude	Longitude	
SLOT#24 DONN 32N-20B-L (958°FNL & 252°FEL, SEC.21)	843.72	23.37	3201888.067	1417992.117	40°28'42.679"N	104°46'27.358"W	
PRECISION DRILLING (25) (RKB) to Mud line (At Slot: SLOT#24 DONN 32N-20B-L (958°FNL & 252°FEL, SEC.21))						4776ft	
Mean Sea Level to Mud line (At Slot: SLOT#24 DONN 32N-20B-L (958°FNL & 252°FEL, SEC.21))						0ft	
PRECISION DRILLING (25) (RKB) to Mean Sea Level						4776ft	

Survey Program

Start MD (ft)	End MD (ft)	Tool	Model	Log Name/Comment	Wellbore
25.00	1750.00	BHI NavTrak	Custom BHI NavTrak (Standard Rotating-Axial Core) (Rockies 0.03Gt model)		DONN 32N-20B-L PWB
1750.00	17868.70	BHI AutoTrak Curve	Custom BHI AutoTrak Curve (FR1, Short) (Rockies 0.03Gt model)		DONN 32N-20B-L PWB



Targets

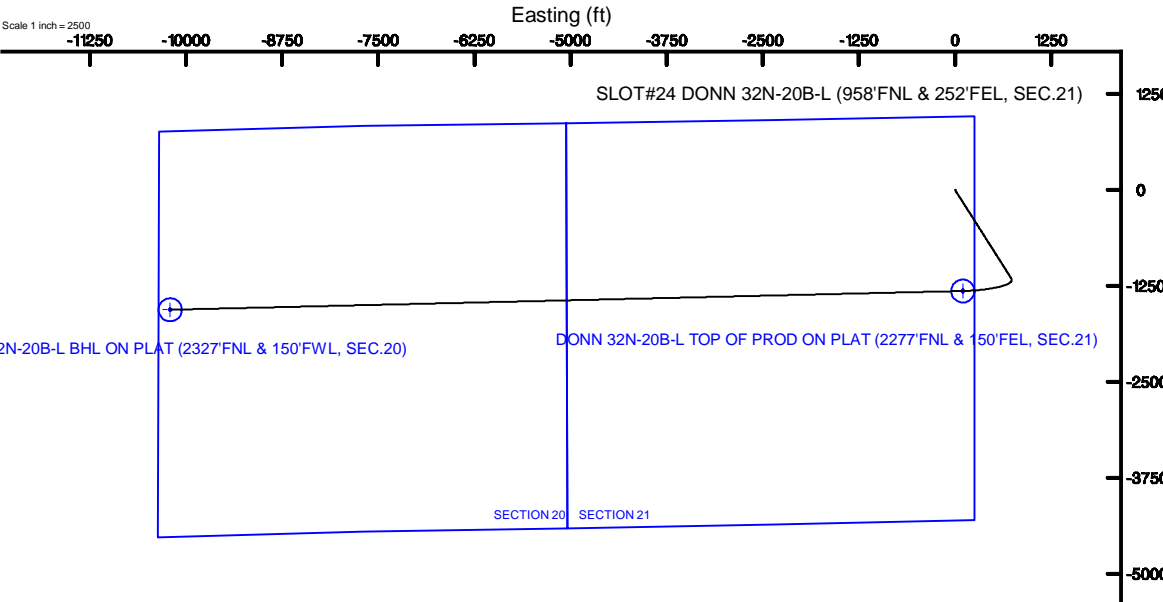
Name	MD (ft)	TVD (ft)	Local N (ft)	Local E (ft)	Grid East (US ft)	Grid North (US ft)	Latitude	Longitude
SEC.20-T06N-R66W		-2.00	220.05	1.67	3201887.93	1418212.16	40°28'44.854"N	104°46'27.336"W
SEC.21-T06N-R66W		38.00	-3662.76	-6164.97	3195753.51	1414279.17	40°28'06.478"N	104°47'47.123"W
DONN 32N-20B-L BHL ON PLAT (2327°FNL & 150°FEL, SEC.20)	17868.70	6954.00	-1561.17	-10206.07	3191695.50	1416347.53	40°28'27.232"N	104°48'39.420"W
DONN 32N-20B-L TOP OF PROD ON PLAT (2277°FNL & 150°FEL, SEC.21)	7558.01	7016.00	-1317.01	101.55	3202000.39	1416676.04	40°28'29.665"N	104°46'26.044"W

Hole and Casing Sections

Name	Start MD (ft)	End MD (ft)	Interval (ft)	Start TVD (ft)	End TVD (ft)	Start Local N (ft)	Start Local E (ft)	End Local N (ft)	End Local E (ft)	Wellbore
13.5in Open Hole	25.00	1750.00	1725.00	25.00	1722.15	0.00	0.00	-220.35	139.76	DONN 32N-20B-L PWB
9.625in Casing Surface	25.00	1750.00	1725.00	25.00	1722.15	0.00	0.00	-220.35	139.76	DONN 32N-20B-L PWB
8.5in Open Hole	1750.00	17868.70	16118.70	1722.15	N/A	-220.35	139.76	N/A	N/A	DONN 32N-20B-L PWB

Well Profile Data

Design Comment	MD (ft)	Inc (°)	Az (°)	TVD (ft)	Local N (ft)	Local E (ft)	DLS (°/100ft)	VS (ft)
Tie On	25.00	0.000	147.614	25.00	0.00	0.00	0.00	0.00
End of Tangent	300.00	0.000	147.614	300.00	0.00	0.00	0.00	0.00
End of Build	978.26	13.565	147.614	971.94	-67.49	42.81	2.00	-32.11
End of Tangent	6477.10	13.565	147.614	6317.38	-1156.65	733.63	0.00	-550.30
End of 3D Arc	7558.01	90.345	268.643	7016.00	-1317.01	101.55	9.00	98.76
End of Tangent	17868.70	90.345	268.643	6954.00	-1561.17	-10206.07	0.00	10324.78



Planned Wellpath Report

DONN 32N-20B-L PWP (REV-A.0)

Page 1 of 6



REFERENCE WELLPATH IDENTIFICATION

Operator	SRC ENERGY	Slot	SLOT#24 DONN 32N-20B-L (958'FNL & 252'FEL, SEC.21)
Area	COLORADO	Well	DONN 32N-20B-L
Field	WELD COUNTY (NAD83,TRUE NORTH)	Wellbore	DONN 32N-20B-L PWB
Facility	SEC.21-T06N-R66W		

REPORT SETUP INFORMATION

Projection System	NAD83 / Lambert Colorado SP, Northern Zone (501), US feet	Software System	WellArchitect® 5.1
North Reference	True	User	Doddanna
Scale	0.999965	Report Generated	8/22/2017 at 4:00:53 PM
Convergence at slot	0.47° East	Database/Source file	Denver DB/DONN_32N-20B-L_PWP__REV-A.0_.xml

WELLPATH LOCATION

	Local coordinates		Grid coordinates		Geographic coordinates	
	North[ft]	East[ft]	Easting[US ft]	Northing[US ft]	Latitude	Longitude
Slot Location	843.72	23.37	3201888.07	1417992.12	40°28'42.679"N	104°46'27.358"W
Facility Reference Pt			3201871.60	1417148.27	40°28'34.342"N	104°46'27.660"W
Field Reference Pt			3171284.48	1426358.81	40°30'07.643"N	104°53'02.634"W

WELLPATH DATUM

Calculation method	Minimum curvature	PRECISION DRILLING (25') (RKB) to Facility Vertical Datum	4776.00ft
Horizontal Reference Pt	Slot	PRECISION DRILLING (25') (RKB) to Mean Sea Level	4776.00ft
Vertical Reference Pt	PRECISION DRILLING (25') (RKB)	PRECISION DRILLING (25') (RKB) to Mud Line at Slot (SLOT#24 DONN 32N-20B-L (958'FNL & 252'FEL, SEC.21))	4776.00ft
MD Reference Pt	PRECISION DRILLING (25') (RKB)	Section Origin	N 0.00, E 0.00 ft
Field Vertical Reference	Mean Sea Level	Section Azimuth	261.30°

Planned Wellpath Report

DONN 32N-20B-L PWP (REV-A.0)

Page 2 of 6



REFERENCE WELLPATH IDENTIFICATION

Operator	SRC ENERGY	Slot	SLOT#24 DONN 32N-20B-L (958'FNL & 252'FEL, SEC.21)
Area	COLORADO	Well	DONN 32N-20B-L
Field	WELD COUNTY (NAD83,TRUE NORTH)	Wellbore	DONN 32N-20B-L PWB
Facility	SEC.21-T06N-R66W		

WELLPATH DATA (185 stations) † = interpolated/extrapolated station

MD [ft]	Inclination [°]	Azimuth [°]	TVD [ft]	Vert Sect [ft]	North [ft]	East [ft]	DLS [°/100ft]	Comments
0.00†	0.000	147.614	0.00	0.00	0.00	0.00	0.00	
25.00	0.000	147.614	25.00	0.00	0.00	0.00	0.00	Tie On
125.00†	0.000	147.614	125.00	0.00	0.00	0.00	0.00	
225.00†	0.000	147.614	225.00	0.00	0.00	0.00	0.00	
300.00	0.000	147.614	300.00	0.00	0.00	0.00	0.00	End of Tangent
325.00†	0.500	147.614	325.00	-0.04	-0.09	0.06	2.00	
425.00†	2.500	147.614	424.96	-1.10	-2.30	1.46	2.00	
525.00†	4.500	147.614	524.77	-3.55	-7.46	4.73	2.00	
625.00†	6.500	147.614	624.30	-7.40	-15.55	9.86	2.00	
725.00†	8.500	147.614	723.44	-12.64	-26.57	16.85	2.00	
825.00†	10.500	147.614	822.07	-19.27	-40.51	25.69	2.00	
925.00†	12.500	147.614	920.05	-27.28	-57.34	36.37	2.00	
978.26	13.565	147.614	971.94	-32.11	-67.49	42.81	2.00	End of Build
1025.00†	13.565	147.614	1017.38	-36.51	-76.74	48.68	0.00	
1125.00†	13.565	147.614	1114.59	-45.94	-96.55	61.24	0.00	
1225.00†	13.565	147.614	1211.80	-55.36	-116.36	73.80	0.00	
1325.00†	13.565	147.614	1309.01	-64.78	-136.17	86.37	0.00	
1425.00†	13.565	147.614	1406.22	-74.21	-155.97	98.93	0.00	
1525.00†	13.565	147.614	1503.43	-83.63	-175.78	111.49	0.00	
1625.00†	13.565	147.614	1600.64	-93.05	-195.59	124.06	0.00	
1725.00†	13.565	147.614	1697.85	-102.48	-215.39	136.62	0.00	
1825.00†	13.565	147.614	1795.06	-111.90	-235.20	149.18	0.00	
1925.00†	13.565	147.614	1892.27	-121.33	-255.01	161.74	0.00	
2025.00†	13.565	147.614	1989.48	-130.75	-274.82	174.31	0.00	
2125.00†	13.565	147.614	2086.69	-140.17	-294.62	186.87	0.00	
2225.00†	13.565	147.614	2183.90	-149.60	-314.43	199.43	0.00	
2325.00†	13.565	147.614	2281.11	-159.02	-334.24	212.00	0.00	
2425.00†	13.565	147.614	2378.32	-168.44	-354.04	224.56	0.00	
2525.00†	13.565	147.614	2475.53	-177.87	-373.85	237.12	0.00	
2625.00†	13.565	147.614	2572.74	-187.29	-393.66	249.69	0.00	
2725.00†	13.565	147.614	2669.95	-196.71	-413.47	262.25	0.00	
2825.00†	13.565	147.614	2767.16	-206.14	-433.27	274.81	0.00	
2925.00†	13.565	147.614	2864.37	-215.56	-453.08	287.37	0.00	
3025.00†	13.565	147.614	2961.58	-224.99	-472.89	299.94	0.00	
3125.00†	13.565	147.614	3058.79	-234.41	-492.69	312.50	0.00	
3225.00†	13.565	147.614	3156.00	-243.83	-512.50	325.06	0.00	
3325.00†	13.565	147.614	3253.22	-253.26	-532.31	337.63	0.00	
3425.00†	13.565	147.614	3350.43	-262.68	-552.12	350.19	0.00	
3525.00†	13.565	147.614	3447.64	-272.10	-571.92	362.75	0.00	
3625.00†	13.565	147.614	3544.85	-281.53	-591.73	375.32	0.00	
3725.00†	13.565	147.614	3642.06	-290.95	-611.54	387.88	0.00	
3825.00†	13.565	147.614	3739.27	-300.37	-631.34	400.44	0.00	
3925.00†	13.565	147.614	3836.48	-309.80	-651.15	413.00	0.00	
4025.00†	13.565	147.614	3933.69	-319.22	-670.96	425.57	0.00	
4125.00†	13.565	147.614	4030.90	-328.65	-690.76	438.13	0.00	

Planned Wellpath Report

DONN 32N-20B-L PWP (REV-A.0)

Page 3 of 6



REFERENCE WELLPATH IDENTIFICATION

Operator	SRC ENERGY	Slot	SLOT#24 DONN 32N-20B-L (958'FNL & 252'FEL, SEC.21)
Area	COLORADO	Well	DONN 32N-20B-L
Field	WELD COUNTY (NAD83,TRUE NORTH)	Wellbore	DONN 32N-20B-L PWB
Facility	SEC.21-T06N-R66W		

WELLPATH DATA (185 stations) † = interpolated/extrapolated station

MD [ft]	Inclination [°]	Azimuth [°]	TVD [ft]	Vert Sect [ft]	North [ft]	East [ft]	DLS [°/100ft]	Comments
4225.00†	13.565	147.614	4128.11	-338.07	-710.57	450.69	0.00	
4325.00†	13.565	147.614	4225.32	-347.49	-730.38	463.26	0.00	
4425.00†	13.565	147.614	4322.53	-356.92	-750.19	475.82	0.00	
4525.00†	13.565	147.614	4419.74	-366.34	-769.99	488.38	0.00	
4625.00†	13.565	147.614	4516.95	-375.76	-789.80	500.95	0.00	
4725.00†	13.565	147.614	4614.16	-385.19	-809.61	513.51	0.00	
4825.00†	13.565	147.614	4711.37	-394.61	-829.41	526.07	0.00	
4925.00†	13.565	147.614	4808.58	-404.03	-849.22	538.63	0.00	
5025.00†	13.565	147.614	4905.79	-413.46	-869.03	551.20	0.00	
5125.00†	13.565	147.614	5003.00	-422.88	-888.84	563.76	0.00	
5225.00†	13.565	147.614	5100.21	-432.30	-908.64	576.32	0.00	
5325.00†	13.565	147.614	5197.42	-441.73	-928.45	588.89	0.00	
5425.00†	13.565	147.614	5294.63	-451.15	-948.26	601.45	0.00	
5525.00†	13.565	147.614	5391.84	-460.58	-968.06	614.01	0.00	
5625.00†	13.565	147.614	5489.05	-470.00	-987.87	626.58	0.00	
5725.00†	13.565	147.614	5586.26	-479.42	-1007.68	639.14	0.00	
5825.00†	13.565	147.614	5683.47	-488.85	-1027.49	651.70	0.00	
5925.00†	13.565	147.614	5780.68	-498.27	-1047.29	664.27	0.00	
6025.00†	13.565	147.614	5877.89	-507.69	-1067.10	676.83	0.00	
6125.00†	13.565	147.614	5975.10	-517.12	-1086.91	689.39	0.00	
6225.00†	13.565	147.614	6072.31	-526.54	-1106.71	701.95	0.00	
6325.00†	13.565	147.614	6169.53	-535.96	-1126.52	714.52	0.00	
6425.00†	13.565	147.614	6266.74	-545.39	-1146.33	727.08	0.00	
6477.10	13.565	147.614	6317.38	-550.30	-1156.65	733.63	0.00	End of Tangent
6525.00†	11.976	165.852	6364.11	-553.03	-1166.21	737.85	9.00	
6625.00†	13.297	207.469	6461.89	-547.22	-1186.52	735.08	9.00	
6725.00†	19.234	232.198	6557.95	-525.99	-1206.86	716.72	9.00	
6825.00†	26.884	244.484	6649.95	-489.89	-1226.74	683.23	9.00	
6925.00†	35.144	251.479	6735.61	-439.78	-1245.66	635.44	9.00	
7025.00†	43.668	256.053	6812.82	-376.91	-1263.16	574.52	9.00	
7125.00†	52.325	259.378	6879.68	-302.83	-1278.81	501.97	9.00	
7225.00†	61.055	262.001	6934.55	-219.36	-1292.22	419.57	9.00	
7325.00†	69.828	264.212	6976.08	-128.55	-1303.06	329.36	9.00	
7425.00†	78.626	266.186	7003.24	-32.64	-1311.07	233.56	9.00	
7525.00†	87.436	268.041	7015.36	66.01	-1316.05	134.53	9.00	
7558.01	90.345	268.643	7016.00†	98.76	-1317.01	101.55	9.00	End of 3D Arc
7625.00†	90.345	268.643	7015.60	165.20	-1318.59	34.57	0.00	
7725.00†	90.345	268.643	7015.00	264.38	-1320.96	-65.40	0.00	
7825.00†	90.345	268.643	7014.39	363.56	-1323.33	-165.37	0.00	
7925.00†	90.345	268.643	7013.79	462.74	-1325.70	-265.34	0.00	
8025.00†	90.345	268.643	7013.19	561.92	-1328.06	-365.31	0.00	
8125.00†	90.345	268.643	7012.59	661.10	-1330.43	-465.28	0.00	
8225.00†	90.345	268.643	7011.99	760.28	-1332.80	-565.25	0.00	
8325.00†	90.345	268.643	7011.39	859.46	-1335.17	-665.22	0.00	
8425.00†	90.345	268.643	7010.79	958.63	-1337.54	-765.19	0.00	

Planned Wellpath Report

DONN 32N-20B-L PWP (REV-A.0)

Page 4 of 6



REFERENCE WELLPATH IDENTIFICATION

Operator	SRC ENERGY	Slot	SLOT#24 DONN 32N-20B-L (958'FNL & 252'FEL, SEC.21)
Area	COLORADO	Well	DONN 32N-20B-L
Field	WELD COUNTY (NAD83,TRUE NORTH)	Wellbore	DONN 32N-20B-L PWB
Facility	SEC.21-T06N-R66W		

WELLPATH DATA (185 stations) † = interpolated/extrapolated station

MD [ft]	Inclination [°]	Azimuth [°]	TVD [ft]	Vert Sect [ft]	North [ft]	East [ft]	DLS [°/100ft]	Comments
8525.00†	90.345	268.643	7010.19	1057.81	-1339.90	-865.16	0.00	
8625.00†	90.345	268.643	7009.58	1156.99	-1342.27	-965.13	0.00	
8725.00†	90.345	268.643	7008.98	1256.17	-1344.64	-1065.10	0.00	
8825.00†	90.345	268.643	7008.38	1355.35	-1347.01	-1165.07	0.00	
8925.00†	90.345	268.643	7007.78	1454.53	-1349.38	-1265.04	0.00	
9025.00†	90.345	268.643	7007.18	1553.71	-1351.75	-1365.01	0.00	
9125.00†	90.345	268.643	7006.58	1652.89	-1354.11	-1464.98	0.00	
9225.00†	90.345	268.643	7005.98	1752.06	-1356.48	-1564.95	0.00	
9325.00†	90.345	268.643	7005.37	1851.24	-1358.85	-1664.92	0.00	
9425.00†	90.345	268.643	7004.77	1950.42	-1361.22	-1764.89	0.00	
9525.00†	90.345	268.643	7004.17	2049.60	-1363.59	-1864.86	0.00	
9625.00†	90.345	268.643	7003.57	2148.78	-1365.95	-1964.83	0.00	
9725.00†	90.345	268.643	7002.97	2247.96	-1368.32	-2064.80	0.00	
9825.00†	90.345	268.643	7002.37	2347.14	-1370.69	-2164.77	0.00	
9925.00†	90.345	268.643	7001.77	2446.32	-1373.06	-2264.74	0.00	
10025.00†	90.345	268.643	7001.17	2545.49	-1375.43	-2364.71	0.00	
10125.00†	90.345	268.643	7000.56	2644.67	-1377.79	-2464.68	0.00	
10225.00†	90.345	268.643	6999.96	2743.85	-1380.16	-2564.65	0.00	
10325.00†	90.345	268.643	6999.36	2843.03	-1382.53	-2664.62	0.00	
10425.00†	90.345	268.643	6998.76	2942.21	-1384.90	-2764.59	0.00	
10525.00†	90.345	268.643	6998.16	3041.39	-1387.27	-2864.56	0.00	
10625.00†	90.345	268.643	6997.56	3140.57	-1389.63	-2964.53	0.00	
10725.00†	90.345	268.643	6996.96	3239.75	-1392.00	-3064.50	0.00	
10825.00†	90.345	268.643	6996.35	3338.93	-1394.37	-3164.47	0.00	
10925.00†	90.345	268.643	6995.75	3438.10	-1396.74	-3264.44	0.00	
11025.00†	90.345	268.643	6995.15	3537.28	-1399.11	-3364.41	0.00	
11125.00†	90.345	268.643	6994.55	3636.46	-1401.48	-3464.38	0.00	
11225.00†	90.345	268.643	6993.95	3735.64	-1403.84	-3564.35	0.00	
11325.00†	90.345	268.643	6993.35	3834.82	-1406.21	-3664.32	0.00	
11425.00†	90.345	268.643	6992.75	3934.00	-1408.58	-3764.29	0.00	
11525.00†	90.345	268.643	6992.15	4033.18	-1410.95	-3864.26	0.00	
11625.00†	90.345	268.643	6991.54	4132.36	-1413.32	-3964.23	0.00	
11725.00†	90.345	268.643	6990.94	4231.53	-1415.68	-4064.20	0.00	
11825.00†	90.345	268.643	6990.34	4330.71	-1418.05	-4164.17	0.00	
11925.00†	90.345	268.643	6989.74	4429.89	-1420.42	-4264.14	0.00	
12025.00†	90.345	268.643	6989.14	4529.07	-1422.79	-4364.11	0.00	
12125.00†	90.345	268.643	6988.54	4628.25	-1425.16	-4464.08	0.00	
12225.00†	90.345	268.643	6987.94	4727.43	-1427.52	-4564.05	0.00	
12325.00†	90.345	268.643	6987.34	4826.61	-1429.89	-4664.02	0.00	
12425.00†	90.345	268.643	6986.73	4925.79	-1432.26	-4763.99	0.00	
12525.00†	90.345	268.643	6986.13	5024.96	-1434.63	-4863.96	0.00	
12625.00†	90.345	268.643	6985.53	5124.14	-1437.00	-4963.93	0.00	
12725.00†	90.345	268.643	6984.93	5223.32	-1439.36	-5063.90	0.00	
12825.00†	90.345	268.643	6984.33	5322.50	-1441.73	-5163.87	0.00	
12925.00†	90.345	268.643	6983.73	5421.68	-1444.10	-5263.84	0.00	

Planned Wellpath Report

DONN 32N-20B-L PWP (REV-A.0)

Page 5 of 6



REFERENCE WELLPATH IDENTIFICATION

Operator	SRC ENERGY	Slot	SLOT#24 DONN 32N-20B-L (958'FNL & 252'FEL, SEC.21)
Area	COLORADO	Well	DONN 32N-20B-L
Field	WELD COUNTY (NAD83,TRUE NORTH)	Wellbore	DONN 32N-20B-L PWB
Facility	SEC.21-T06N-R66W		

WELLPATH DATA (185 stations) † = interpolated/extrapolated station

MD [ft]	Inclination [°]	Azimuth [°]	TVD [ft]	Vert Sect [ft]	North [ft]	East [ft]	DLS [°/100ft]	Comments
13025.00†	90.345	268.643	6983.13	5520.86	-1446.47	-5363.81	0.00	
13125.00†	90.345	268.643	6982.52	5620.04	-1448.84	-5463.79	0.00	
13225.00†	90.345	268.643	6981.92	5719.22	-1451.21	-5563.76	0.00	
13325.00†	90.345	268.643	6981.32	5818.39	-1453.57	-5663.73	0.00	
13425.00†	90.345	268.643	6980.72	5917.57	-1455.94	-5763.70	0.00	
13525.00†	90.345	268.643	6980.12	6016.75	-1458.31	-5863.67	0.00	
13625.00†	90.345	268.643	6979.52	6115.93	-1460.68	-5963.64	0.00	
13725.00†	90.345	268.643	6978.92	6215.11	-1463.05	-6063.61	0.00	
13825.00†	90.345	268.643	6978.32	6314.29	-1465.41	-6163.58	0.00	
13925.00†	90.345	268.643	6977.71	6413.47	-1467.78	-6263.55	0.00	
14025.00†	90.345	268.643	6977.11	6512.65	-1470.15	-6363.52	0.00	
14125.00†	90.345	268.643	6976.51	6611.82	-1472.52	-6463.49	0.00	
14225.00†	90.345	268.643	6975.91	6711.00	-1474.89	-6563.46	0.00	
14325.00†	90.345	268.643	6975.31	6810.18	-1477.25	-6663.43	0.00	
14425.00†	90.345	268.643	6974.71	6909.36	-1479.62	-6763.40	0.00	
14525.00†	90.345	268.643	6974.11	7008.54	-1481.99	-6863.37	0.00	
14625.00†	90.345	268.643	6973.50	7107.72	-1484.36	-6963.34	0.00	
14725.00†	90.345	268.643	6972.90	7206.90	-1486.73	-7063.31	0.00	
14825.00†	90.345	268.643	6972.30	7306.08	-1489.09	-7163.28	0.00	
14925.00†	90.345	268.643	6971.70	7405.26	-1491.46	-7263.25	0.00	
15025.00†	90.345	268.643	6971.10	7504.43	-1493.83	-7363.22	0.00	
15125.00†	90.345	268.643	6970.50	7603.61	-1496.20	-7463.19	0.00	
15225.00†	90.345	268.643	6969.90	7702.79	-1498.57	-7563.16	0.00	
15325.00†	90.345	268.643	6969.30	7801.97	-1500.94	-7663.13	0.00	
15425.00†	90.345	268.643	6968.69	7901.15	-1503.30	-7763.10	0.00	
15525.00†	90.345	268.643	6968.09	8000.33	-1505.67	-7863.07	0.00	
15625.00†	90.345	268.643	6967.49	8099.51	-1508.04	-7963.04	0.00	
15725.00†	90.345	268.643	6966.89	8198.69	-1510.41	-8063.01	0.00	
15825.00†	90.345	268.643	6966.29	8297.86	-1512.78	-8162.98	0.00	
15925.00†	90.345	268.643	6965.69	8397.04	-1515.14	-8262.95	0.00	
16025.00†	90.345	268.643	6965.09	8496.22	-1517.51	-8362.92	0.00	
16125.00†	90.345	268.643	6964.49	8595.40	-1519.88	-8462.89	0.00	
16225.00†	90.345	268.643	6963.88	8694.58	-1522.25	-8562.86	0.00	
16325.00†	90.345	268.643	6963.28	8793.76	-1524.62	-8662.83	0.00	
16425.00†	90.345	268.643	6962.68	8892.94	-1526.98	-8762.80	0.00	
16525.00†	90.345	268.643	6962.08	8992.12	-1529.35	-8862.77	0.00	
16625.00†	90.345	268.643	6961.48	9091.29	-1531.72	-8962.74	0.00	
16725.00†	90.345	268.643	6960.88	9190.47	-1534.09	-9062.71	0.00	
16825.00†	90.345	268.643	6960.28	9289.65	-1536.46	-9162.68	0.00	
16925.00†	90.345	268.643	6959.67	9388.83	-1538.82	-9262.65	0.00	
17025.00†	90.345	268.643	6959.07	9488.01	-1541.19	-9362.62	0.00	
17125.00†	90.345	268.643	6958.47	9587.19	-1543.56	-9462.59	0.00	
17225.00†	90.345	268.643	6957.87	9686.37	-1545.93	-9562.56	0.00	
17325.00†	90.345	268.643	6957.27	9785.55	-1548.30	-9662.53	0.00	
17425.00†	90.345	268.643	6956.67	9884.72	-1550.67	-9762.50	0.00	

Planned Wellpath Report

DONN 32N-20B-L PWP (REV-A.0)

Page 6 of 6



REFERENCE WELLPATH IDENTIFICATION

Operator	SRC ENERGY	Slot	SLOT#24 DONN 32N-20B-L (958'FNL & 252'FEL, SEC.21)
Area	COLORADO	Well	DONN 32N-20B-L
Field	WELD COUNTY (NAD83,TRUE NORTH)	Wellbore	DONN 32N-20B-L PWB
Facility	SEC.21-T06N-R66W		

WELLPATH DATA (185 stations) † = interpolated/extrapolated station

MD [ft]	Inclination [°]	Azimuth [°]	TVD [ft]	Vert Sect [ft]	North [ft]	East [ft]	DLS [°/100ft]	Comments
17525.00†	90.345	268.643	6956.07	9983.90	-1553.03	-9862.47	0.00	
17625.00†	90.345	268.643	6955.47	10083.08	-1555.40	-9962.44	0.00	
17725.00†	90.345	268.643	6954.86	10182.26	-1557.77	-10062.41	0.00	
17825.00†	90.345	268.643	6954.26	10281.44	-1560.14	-10162.38	0.00	
17868.70	90.345	268.643	6954.00 ²	10324.78	-1561.17	-10206.07	0.00	End of Tangent

HOLE & CASING SECTIONS

- Ref Wellbore: DONN 32N-20B-L PWB Ref Wellpath: DONN 32N-20B-L PWP (REV-A.0)

String/Diameter	Start MD [ft]	End MD [ft]	Interval [ft]	Start TVD [ft]	End TVD [ft]	Start N/S [ft]	Start E/W [ft]	End N/S [ft]	End E/W [ft]
13.5in Open Hole	25.00	1750.00	1725.00	25.00	1722.15	0.00	0.00	-220.35	139.76
9.625in Casing Surface	25.00	1750.00	1725.00	25.00	1722.15	0.00	0.00	-220.35	139.76
8.5in Open Hole	1750.00	17868.70	16118.70	1722.15	N/A	-220.35	139.76	N/A	N/A

TARGETS

Name	MD [ft]	TVD [ft]	North [ft]	East [ft]	Grid East [US ft]	Grid North [US ft]	Latitude	Longitude	Shape
SEC.20-T06N-R66W		-2.00	220.05	1.67	3201887.93	1418212.16	40°28'44.854"N	104°46'27.336"W	polygon
SEC.21-T06N-R66W		38.00	-3662.76	-6164.97	3195753.51	1414279.17	40°28'06.478"N	104°47'47.123"W	polygon
2) DONN 32N-20B-L BHL ON PLAT (2327'FNL & 150'FWL, SEC.20)	17868.70	6954.00	-1561.17	-10206.07	3191695.50	1416347.53	40°28'27.232"N	104°48'39.420"W	circle
1) DONN 32N-20B-L TOP OF PROD ON PLAT (2277'FNL & 150'FEL, SEC.21)	7558.01	7016.00	-1317.01	101.55	3202000.39	1416676.04	40°28'29.665"N	104°46'26.044"W	circle

SURVEY PROGRAM -

Ref Wellbore: DONN 32N-20B-L PWB Ref Wellpath: DONN 32N-20B-L PWP (REV-A.0)

Start MD [ft]	End MD [ft]	Positional Uncertainty Model	Log Name/Comment	Wellbore
25.00	1750.00	Custom BHI NaviTrak (Standard Rotating+Axial Corr) (Rockies 0.03Gt model)		DONN 32N-20B-L PWB
1750.00	17868.70	Custom BHI AutoTrak Curve (IFR1, Short) (Rockies 0.03Gt model)		DONN 32N-20B-L PWB