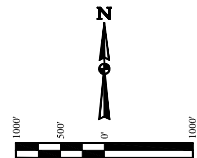


- LEGEND:**
- 90° SYMBOL
  - PROPOSED WELLHEAD
  - ENTRY POINT
  - BTM PERF.
  - TARGET BOTTOM HOLE
  - SECTION CORNERS LOCATED. (NAD 83)
  - SECTION CORNERS RE-ESTABLISHED. (Not Set on Ground.) (NAD 83)

T1N, R67W, 6th P.M.

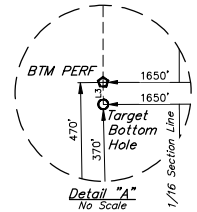
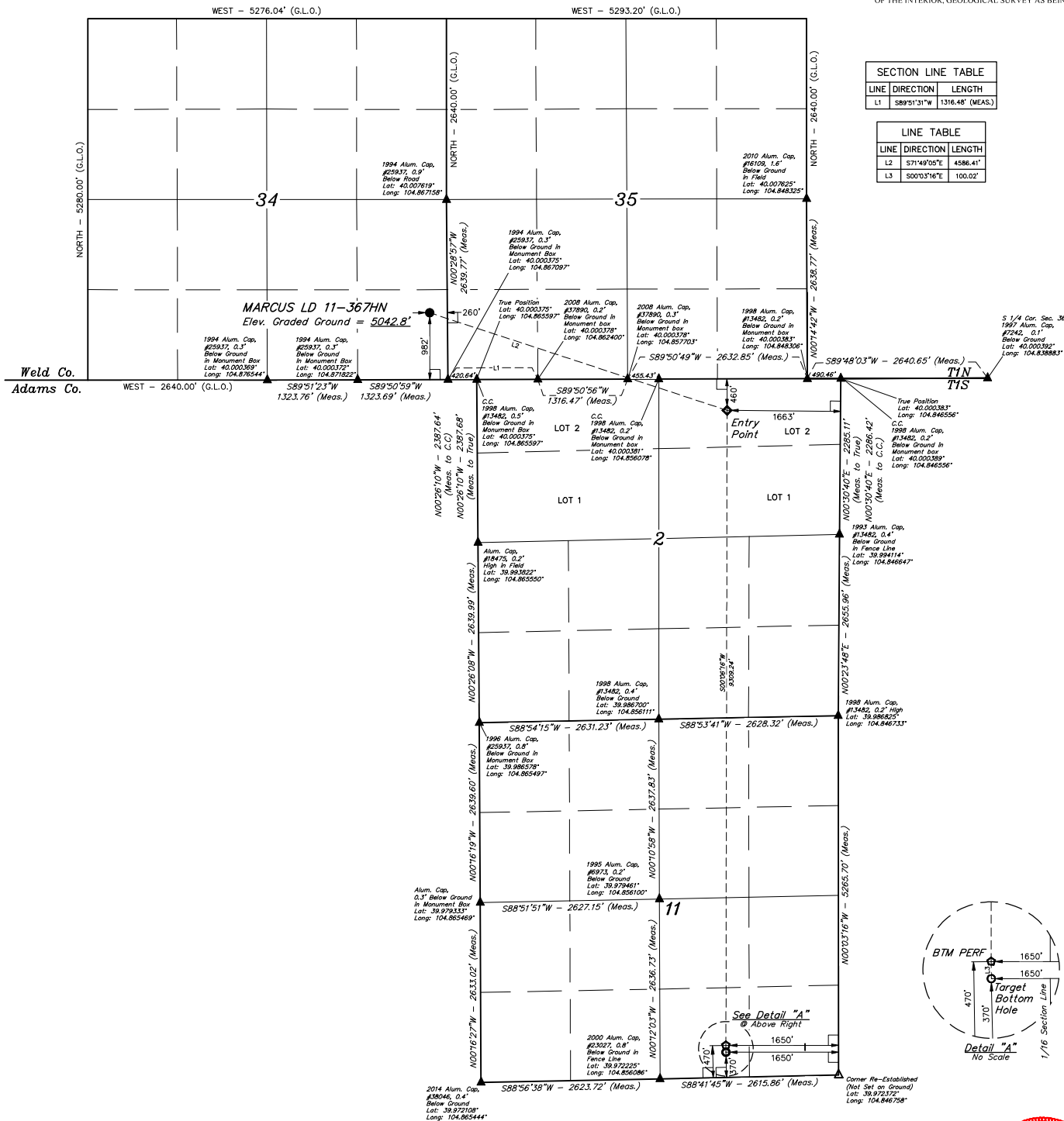


**BASIS OF BEARINGS**  
BASIS OF BEARINGS IS A G.P.S. OBSERVATION

**BASIS OF ELEVATION**  
BENCHMARK JR 53 5026 LOCATED IN THE SW 1/4 SE 1/4 OF SECTION 18, T1N, R68W, 6th P.M., TAKEN FROM 1988 PUBLISHED DATUM BY THE UNITED STATES DEPARTMENT OF THE INTERIOR, GEOLOGICAL SURVEY AS BEING 5028 FEET.

LINE	DIRECTION	LENGTH
L1	S89°51'31"W	1316.48' (MEAS.)

LINE	DIRECTION	LENGTH
L2	S71°48'05"E	4586.41'
L3	S00°0'16"E	100.02'



CERTIFICATE OF REGISTRATION  
THIS IS TO CERTIFY THAT THE ABOVE NOTED SURVEY WAS MADE AND CONDUCTED BY THE UNDERSIGNED AND THAT THE SAME ARE TRUE AND CORRECT TO THE BEST OF MY KNOWLEDGE AND BELIEF.  
CHAD MEIERS, D.N.  
REGISTERED PROFESSIONAL SURVEYOR  
STATE OF COLORADO, LICENSE NO. 17510-17

REV: 1 07-07-17 D.COX (TBM MOVE & BTM PERF ADD)

**GREAT WESTERN OPERATING COMPANY**

MARCUS LD 11-367HN  
SE 1/4 SE 1/4, SECTION 34, T1N, R67W, 6th P.M.  
WELD COUNTY, COLORADO

PDOP = 1.1

NAD 83 (SURFACE LOCATION)	NAD 83 (ENTRY POINT)	NAD 83 (BTM PERF)	NAD 83 (TARGET BOTTOM HOLE)
LATITUDE = 40°00'11.06" (40.003072)	LATITUDE = 39°59'56.83" (39.999119)	LATITUDE = 39°58'24.85" (39.973509)	LATITUDE = 39°58'23.86" (39.973294)
LONGITUDE = 104°27'04.97" (104.450847)	LONGITUDE = 104°51'06.03" (104.852508)	LONGITUDE = 104°51'09.51" (104.852642)	LONGITUDE = 104°51'09.51" (104.852642)
NAD 83 (SURFACE LOCATION)	NAD 83 (ENTRY POINT)	NAD 83 (BTM PERF)	NAD 83 (TARGET BOTTOM HOLE)
LATITUDE = 40°00'11.11" (40.003086)	LATITUDE = 39°59'56.89" (39.999136)	LATITUDE = 39°58'24.91" (39.973586)	LATITUDE = 39°58'23.92" (39.973311)
LONGITUDE = 104°27'03.07" (104.450719)	LONGITUDE = 104°51'07.13" (104.852111)	LONGITUDE = 104°51'07.60" (104.852111)	LONGITUDE = 104°51'07.60" (104.852111)

**UITS, LLC**  
Corporate Office • 85 South 200 East  
Vernal, UT 84078 • (435) 789-1017

**UINTEAH**  
SURVEYED BY CHAD MEIERS, D.N. 03-06-17  
DRAWN BY K.B. 03-10-17  
**WELL LOCATION PLAT**