

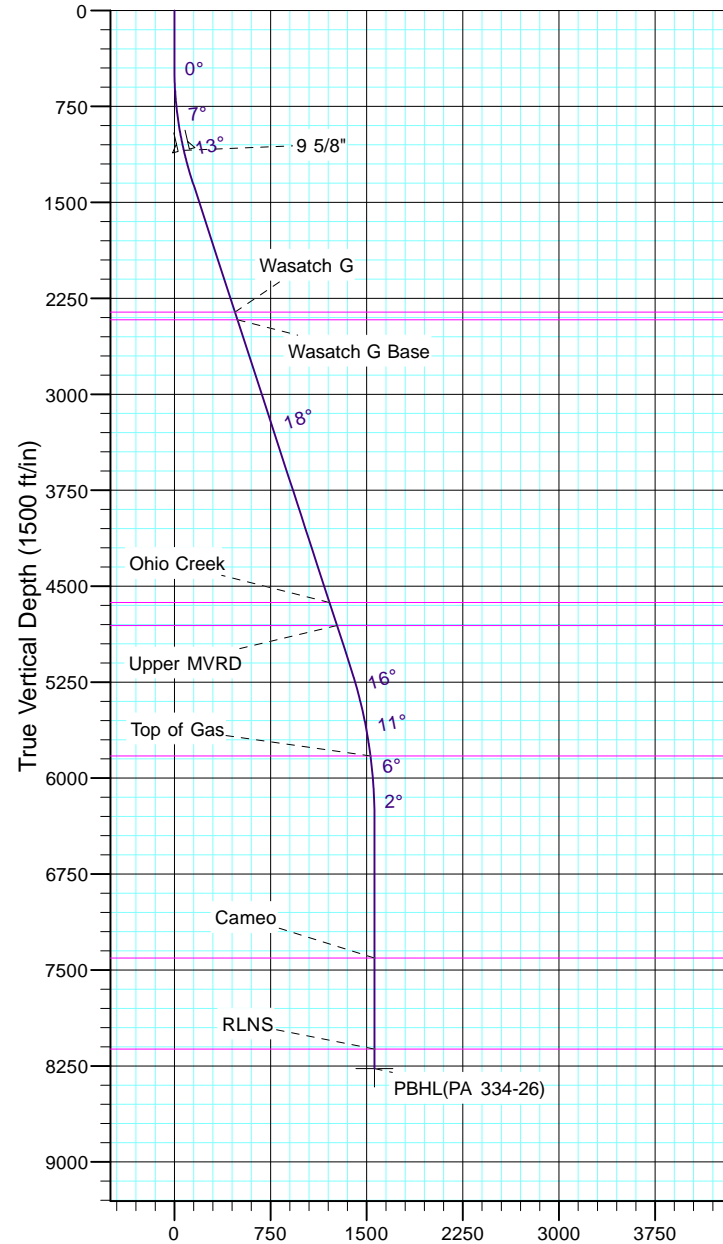
TEP Rocky Mountain LLC

Project: Garfield County, CO NAD83
Site: PA 23-26 Pad
Well: PA 334-26
Wellbore: OH
Design: Plan #1



Azimuths to True North
Magnetic North: 11.44°

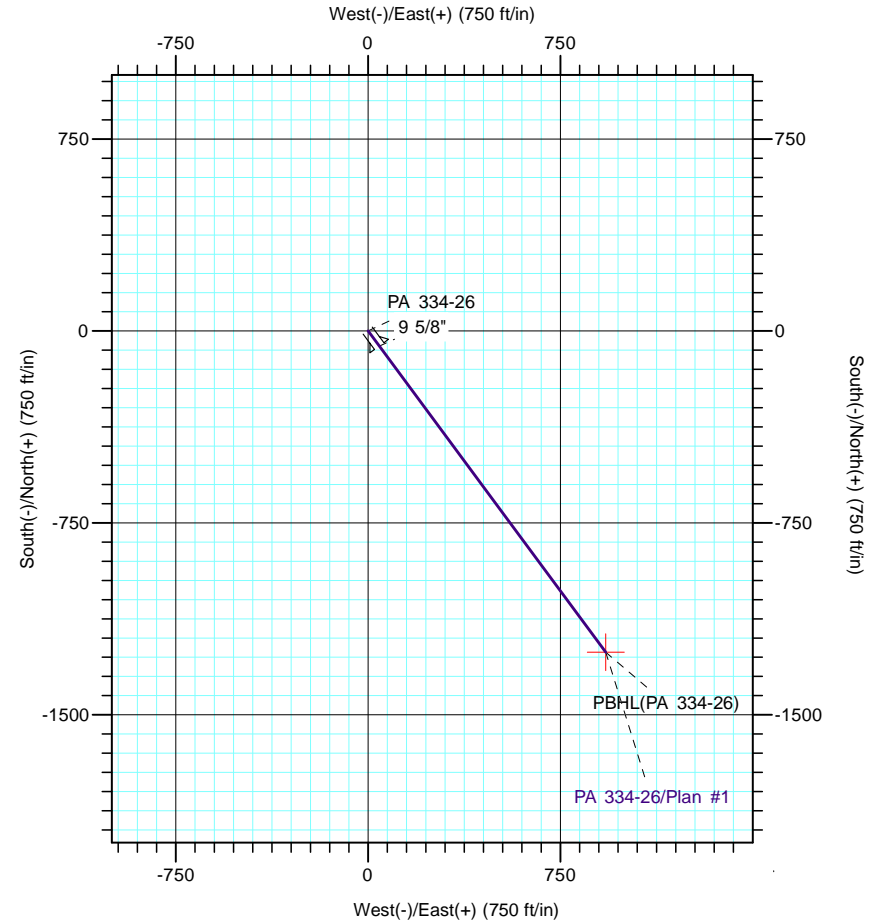
Magnetic Field
Strength: 53054.0snT
Dip Angle: 65.99°
Date: 12/31/2004
Model: IGRF2000



Vertical Section at 143.56° (1500 ft/in)

CASING DETAILS			
TVD	MD	Name	Size
1094.4	1100.0	9 5/8"	9.625

FORMATION TOP DETAILS		
TVDPath	MDPath	Formation
2358.0	2425.3	Wasatch G
2418.0	2488.4	Wasatch G Base
4628.0	4812.1	Ohio Creek
4808.0	5001.4	Upper MVRD
5828.0	6056.4	Top of Gas
7408.0	7637.7	Cameo
8118.0	8347.7	RLNS



DESIGN TARGET DETAILS						
Name	TVD	+N/-S	+E/-W	Northing	Easting	Latitude
PBHL(PA 334-26)	8271.0	-1255.6	927.1	1613109.10	2304806.40	39° 29' 27.138 N

SECTION DETAILS										
Sec	MD	Inc	Azi	TVD	+N/-S	+E/-W	Dleg	TFace	VSect	Target
1	0.0	0.00	0.00	0.0	0.0	0.0	0.00	0.00	0.0	
2	450.0	0.00	0.00	450.0	0.0	0.0	0.00	0.00	0.0	
3	1349.8	18.00	143.56	1335.1	-112.8	83.3	2.00	143.56	140.2	
4	5342.9	18.00	143.56	5132.8	-1105.2	816.1	0.00	0.00	1373.9	
5	6542.7	0.00	0.00	6313.0	-1255.6	927.1	1.50	180.00	1560.8	
6	8500.7	0.00	0.00	8271.0	-1255.6	927.1	0.00	0.00	1560.8	PBHL(PA 334-26)