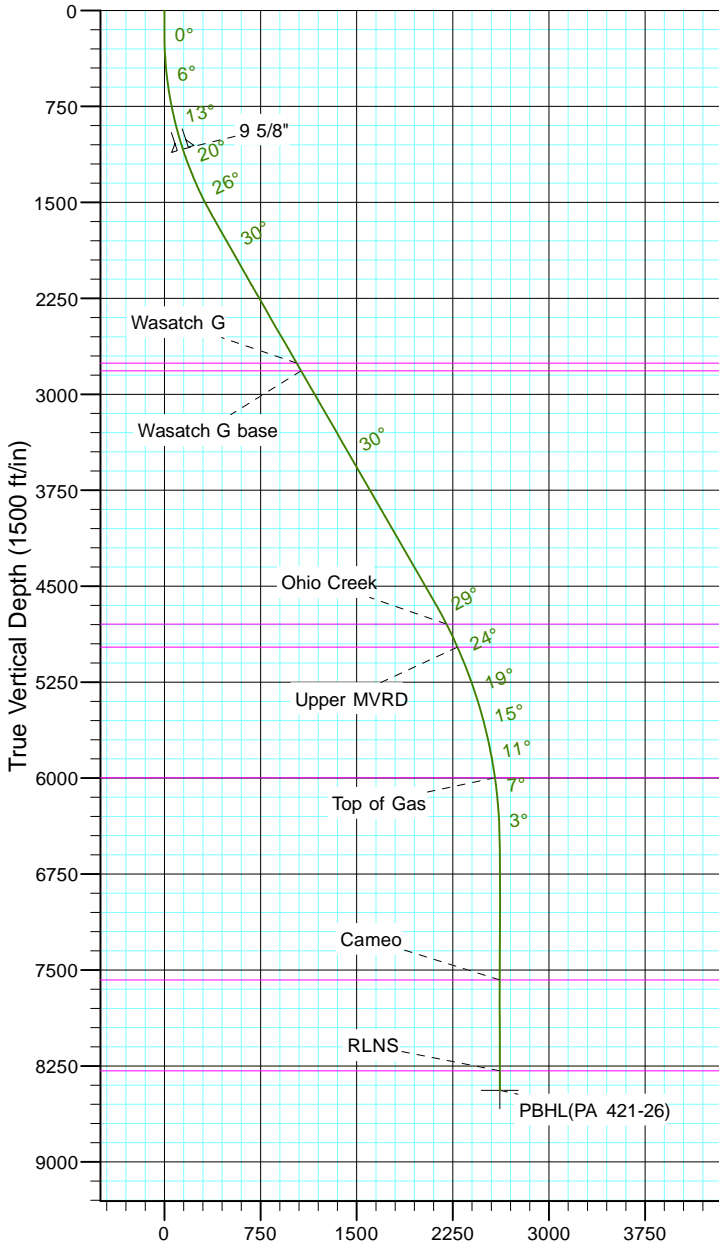


TEP Rocky Mountain LLC
Project: Garfield County, CO NAD83
Site: PA 23-26 Pad
Well: PA 421-26
Wellbore: OH
Design: Plan #1



Azimuths to True North
Magnetic North: 11.44°

Magnetic Field
Strength: 53054.0snT
Dip Angle: 65.99°
Date: 12/31/2004
Model: IGRF2000



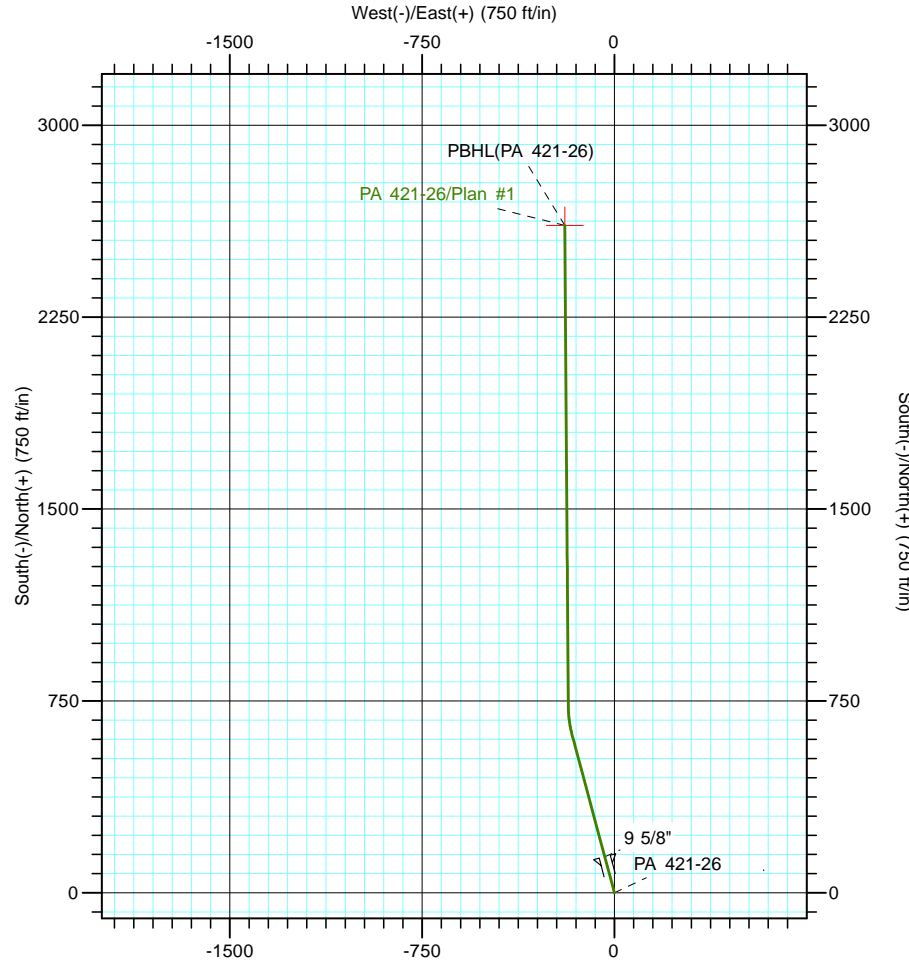
Vertical Section at 355.75° (1500 ft/in)

CASING DETAILS

TVD	MD	Name	Size
1084.3	1100.0	9 5/8"	9.625

FORMATION TOP DETAILS

TVDPath	MDPath	Formation
2758.0	3002.5	Wasatch G
2818.0	3071.8	Wasatch G base
4798.0	5355.0	Ohio Creek
4978.0	5554.5	Upper MVRD
5998.0	6619.0	Top of Gas
7578.0	8200.8	Cameo
8288.0	8910.8	RLNS



DESIGN TARGET DETAILS

Name	TVD	+N/-S	+E/-W	Northing	Easting	Latitude	Longitude
PBHL(PA 421-26)	8441.0	2608.7	-193.9	1617012.10	2303767.40	39° 30' 5.421 N	107° 58' 3.608 W

SECTION DETAILS

Sec	MD	Inc	Azi	TVD	+N/-S	+E/-W	Dleg	TFace	VSect	Target
1	0.0	0.00	0.00	0.0	0.0	0.0	0.00	0.00	0.0	
2	180.0	0.00	0.00	180.0	0.0	0.0	0.00	0.00	0.0	
3	1680.0	30.00	345.00	1612.4	370.7	-99.3	2.00	345.00	377.1	
4	2180.0	30.00	345.00	2045.4	612.2	-164.0	0.00	0.00	622.7	
5	2422.5	30.00	359.58	2255.7	731.6	-180.2	3.00	96.35	742.9	
6	5154.0	30.00	359.58	4621.3	2097.1	-190.2	0.00	0.00	2105.4	
7	7153.8	0.00	0.00	6531.0	2608.7	-193.9	1.50	180.00	2615.9	
8	9063.8	0.00	0.00	8441.0	2608.7	-193.9	0.00	0.00	2615.9	PBHL(PA 421-26)