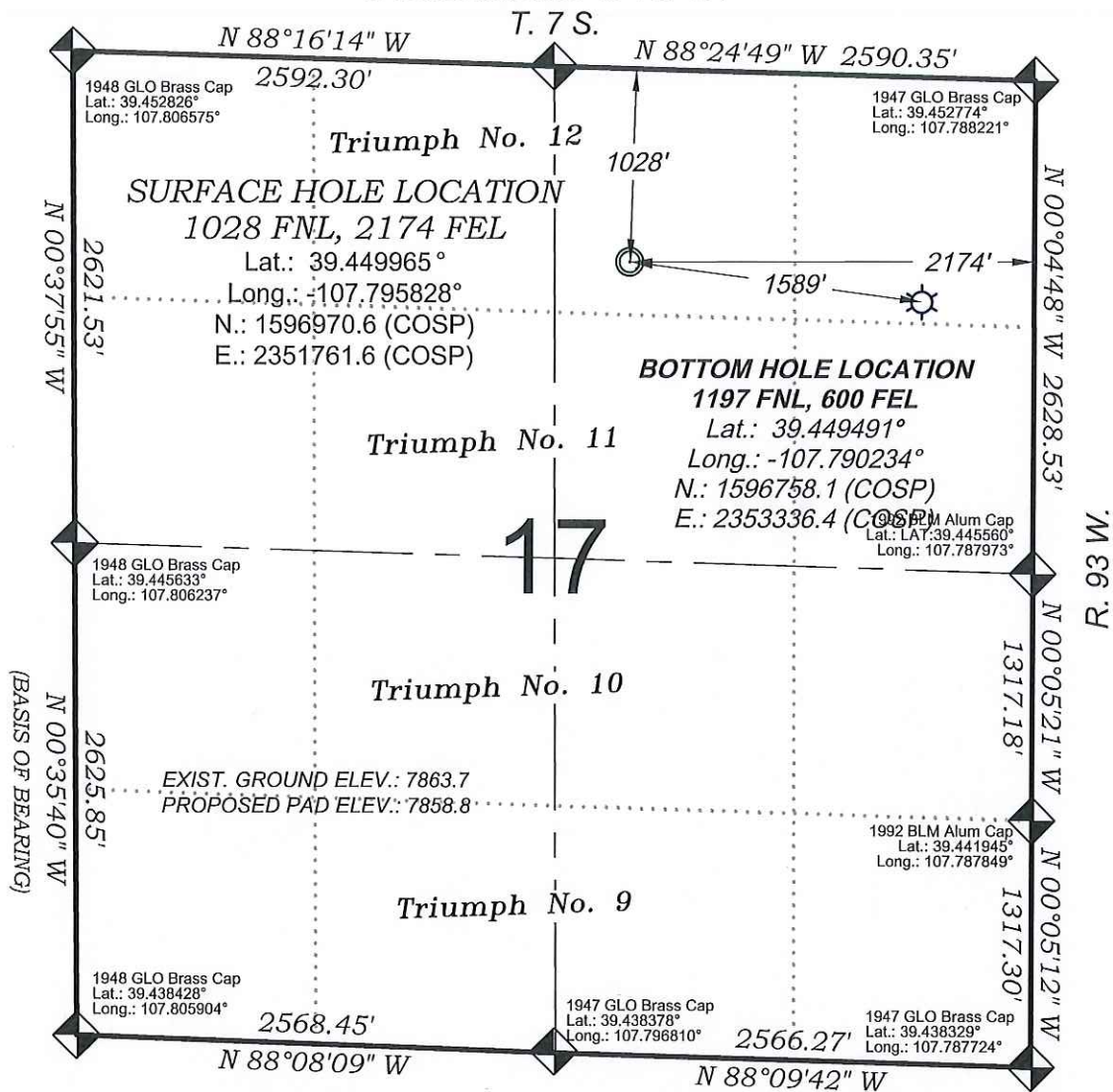
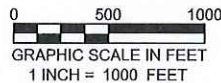






# Federal RU 541-17



THERE ARE NO VISIBLE  
IMPROVEMENTS WITHIN 500'  
OF THIS LOCATION



## - LEGEND -

- FIELD LOCATED SECTION MONUMENTS AS DESCRIBED 
- FIELD SURVEYED WELL LOCATION 
- CALCULATED BOTTOM HOLE LOCATION 
- CALCULATED SECTION CORNER LOCATION 

## SURVEYORS STATEMENT

I, MICHAEL J. LANGHORNE, A REGISTERED LAND SURVEYOR IN THE STATE OF COLORADO DO HEREBY CERTIFY THAT THE SURVEY SHOWN HEREON WAS PREPARED UNDER MY DIRECT SUPERVISION AND HAS BEEN STAKED ON THE GROUND AS SHOWN ON THE PLAT AND CHECKING THAT THIS MAP IS A TRUE REPRESENTATION THEREOF.

MICHAEL J. LANGHORNE, COLORADO REGISTRATION NO. 36572  
FOR AND ON BEHALF OF  
BOOKCLIFF SURVEY SERVICES, INC.

## REFERENCES

- 1) RE-SURVEY T. 7 S., R. 93 W., 6th P.M (BLM PLAT)
- 2) U.S.G.S. QUAD: North Mamm Peak, CO

REVISED: 4/28/17

136 East Third Street  
Rifle, Colorado  
81650 Ph. (970)  
625-2720 Fax (970)  
625-2773

**BOOKCLIFF**  
Survey Services, Inc.

SURVEY DATE: 1/14/14  
MAP DATE: 6/9/16  
SCALE: 1" = 1000'  
PLAT: 1 of 1  
PROJECT: TEP Valley

## NOTES

- 1) ELEVATIONS BASED ON N.A.V.D. 1988 PUBLISHED COORDINATES.
- 2) LATITUDES AND LONGITUDES ARE BASE ON NAD 83, PUBLISHED COORDINATES
- 3) STATE PLANE COORDINATES ARE BASED ON COLORADO CENTRAL ZONE, U.S. SURVEY FEET.
- 4) ELEVATION MASK SET TO 15°
- 5) GPS OPERATOR J. KIRKPATRICK, OBSERVED A PDOP 2.58 ON SURVEY POINT NUMBER 388.
- 6) SURFACE AND BOTTOM HOLE LOCATIONS ARE MEASURED 90° FROM SECTION LINES.

## WELL LOCATION PLAT Prepared for:

**TERRA**  
ENERGY PARTNERS

TEP Rocky Mountain LLC

NW1/4 NE1/4, SECTION 17  
T. 7 S., R. 93 W. of the 6th. P.M.  
GARFIELD COUNTY, COLORADO