

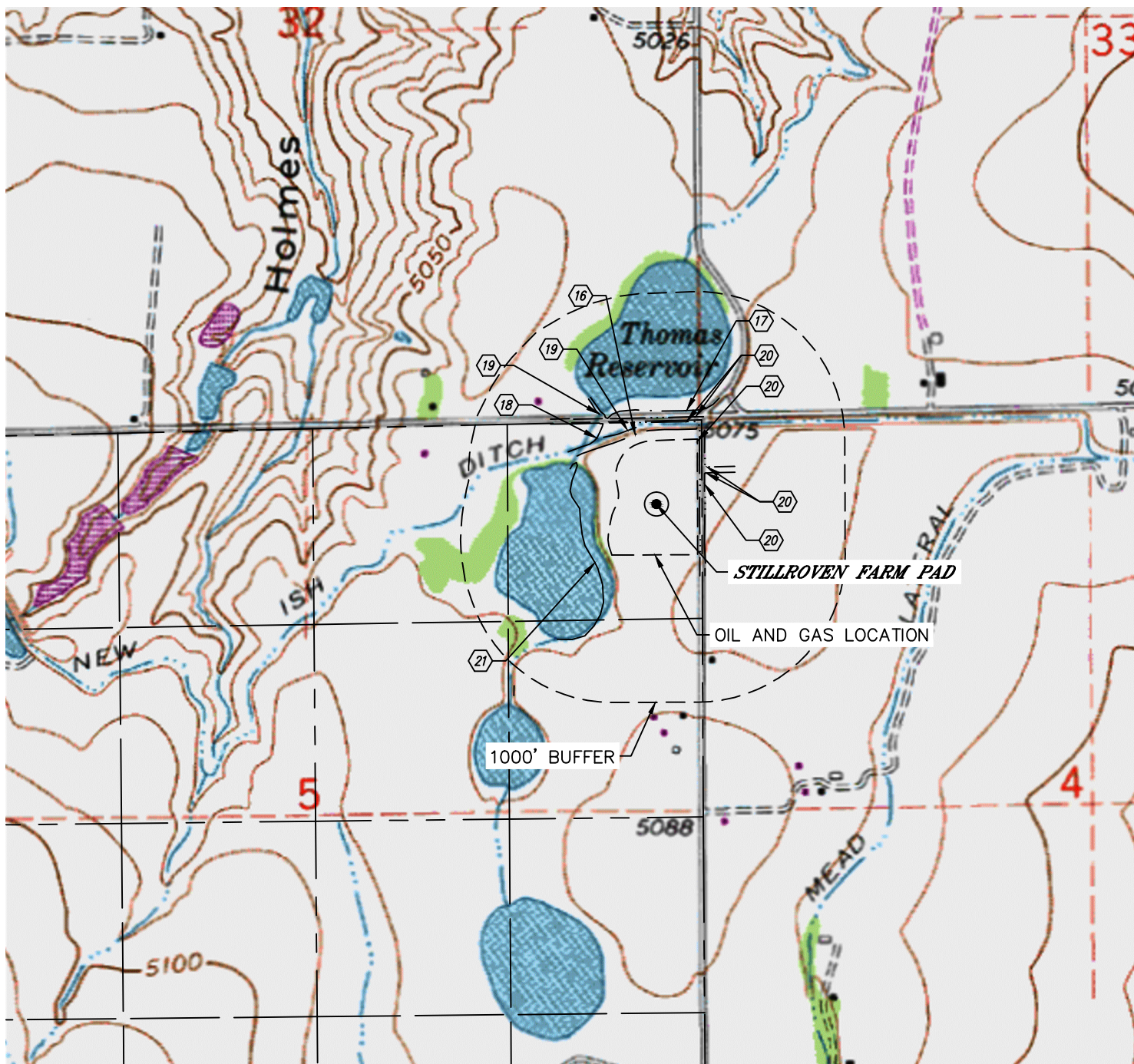


Lat40°, Inc. 6250 W. 10th Street, Unit 2, Greeley, CO 970-515-5294

HYDROLOGY MAP

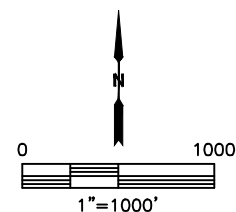
STILLROVEN FARM PAD

SECTION: 5
TOWNSHIP: 3N
RANGE: 68W
6TH. P.M.
WELD COUNTY, CO



DISTANCES MEASURED FROM THE EDGE OF THE OIL AND GAS LOCATION.

- ①⑥ NEW ISH DITCH 66' W
- ①⑦ THOMAS RESERVOIR 196' N
- ①⑧ DITCH 211' NW
- ①⑨ LOW AREA 109' & 307' NW
- ②⑩ BORROW DITCH 14', 48', 59' & 64' E, 120' & 151' N
- ②⑪ EDGE OF WATER 126' SW



DATE: 6/12/2017
PROJECT#: 2017042